

Fleetwood's Charity Primary School

Homework Menu

Maple Class - Summer 1



Please bring your homework in to show to the class on the last week of half term so that we can share and celebrate all of your hard work!



Weekly Activities

Reading



Read to an adult or independently for 10 minutes each day; this could be a story book, newspaper, recipe or even a comic!

Spellings 

Spellings will be set weekly to practise on Spelling Shed; practise for 10 minutes, 3 times a week.

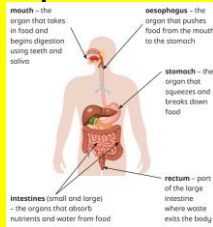
Times Tables



Times tables will be set on Times Tables Rockstars weekly; practise for 10 minutes, 3 times a week.

Science

Draw or make a physical model of the basic digestive system. Remember to add labels; you could even add explanations!



History

Create your own fact file about the Georgians. Include information about their timeline, monarchs and the industrial revolution.



DT



Find an item of clothing or fabric at home that won't be worn/used again. Upcycle it to give it a new purpose! You could use sewing or embroidery on your item if you like!