

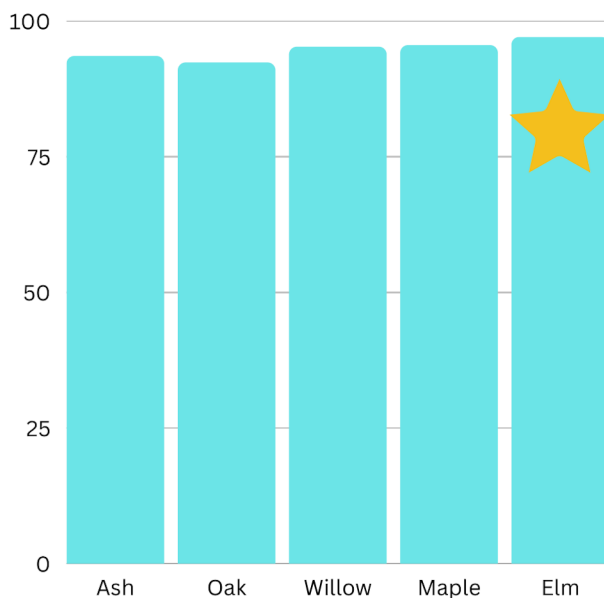
Friday 20th January 2023



# Newsletter



## Attendance

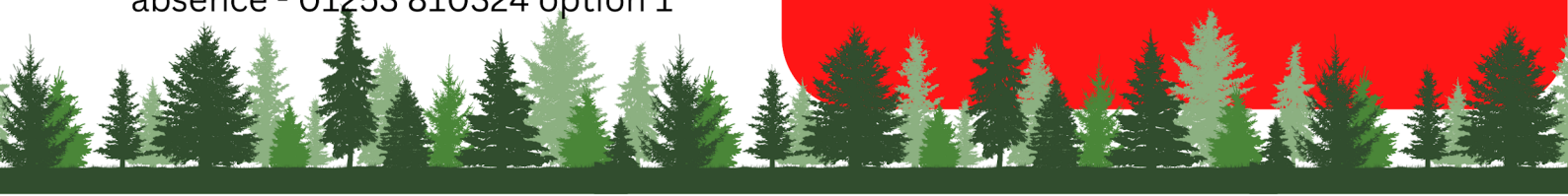


The whole school attendance for this week is 94.8%, with Elm class having 97% attendance this week.

Please ensure all absence is reported to the answerphone before 9am on each day of absence - 01253 810324 option 1

## Highlights

- This week, the Yogi Group came and delivered yoga sessions to each class which was brilliant! Everyone did really well!
- We have been exploring both Buddhism and Chinese New Year this week. Our classes are collating examples of work to create a display in the hall to celebrate their learning.
- Our family groups have used the beautiful story of 'The Boy, the Mole, the Fox and the Horse' as an inspiration for thinking about our core Christian values. Next time you are in school, take a look at our values display in the corridor.

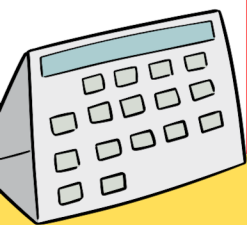


# Athletics Club

There will be no session on Friday 27th February as Coach Ryan will be going with the team of children chosen to take part in the Year 5/6 Sports Hall Athletics Tournament at Myerscough. The pupils involved will receive a letter on Monday.

## Chinese New year Celebration

We are holding a special After School Club on Monday 23d January to celebrate Chinese New Year. There will be Chinese foods and crafts. Please book on through ParentPay (bookings close 48 hours in advance).



**Wednesday 25/1/23** - KS2 Author visit

**Friday 27/1/23** - Year 5/6 indoor athletics competition @ Mysercsough College

**Tuesday 31/1/23** - Preschool, Ash and Oak Balance Bike day (new date)

**Thursday 9/2/23** - KS1 Sports Inclusion Festival @ Millfield

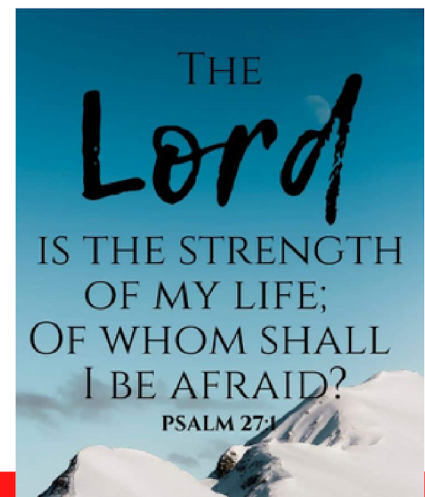
**Friday 10/2/23** - School close for half term (3:30pm)

**Monday 20/2/23** - School opens

**Wednesday 22/2/23 - Tuesday 28/2/23** - Book Fair in school

**Thursday 23/2/23** - Parents' Evening in school

**Friday 31/3/23** - School closes for Easter holiday



## Rock Steady Concert

If your child takes part in Rocksteady lessons, there will be a concert on Friday 27th January in the school hall at 10am. You are welcome to come and watch them perform. We have a bursary place available for a child in receipt of pupil premium funding to start Rocksteady lessons. If you think your child would be interested in taking part, please contact either Mrs Gladwin or Mrs Adams.

## Lunches

Please complete the lunch form for ALL pupils in school

<https://forms.office.com/r/exTQMJtNLL>



Meet at the park at 8:25am to leave at 8:30am





# CHINESE NEW YEAR IN AFTER SCHOOL CLUB

On Monday 23rd January, After School Club will be celebrating Chinese New year with crafts and a buffet of a selection of Chinese foods. Book on through ParentPay - £5 until 4:30pm or £7.50 until 5:30pm.



Here are the fun packed activities planned for next week in the Woodland Den.

Please book on via ParentPay - sessions run until 4:30pm (half session) or 5:30pm (full session), and all children are provided with a drink and a snack. Booking closes 48 in advance online, but contact the office if you need a last minute place in the afterschool club.

Date	Activity	Snack
23/01/23	Chinese New Year – food and crafts	Chinese food
24/01/23	Board games	Crumpets
25/01/23	Spot the difference	Crackers
26/01/23	Australia Day – sports activities	Hot chocolate and marshmallows
27/01/22	Computing	Toast and jam





# FEBRUARY SPORTS CAMPS

(MONDAY 13th FEBRUARY - FRIDAY 17th FEBRUARY)



## Carleton Green Primary (FY6 7TF)

**NORMAL DAY (£12.50 PER DAY):**

**TIME: 09:00-16:00**

**LATE PICKUP (+£5 PER DAY):**

**TIME: 16:00-17:30**



## Shakespeare Primary (FY7 7LL)

**NORMAL DAY (£12.50 PER DAY):**

**TIME: 09:00-16:00**

**LATE PICKUP (+£5 PER DAY):**

**TIME: 16:00-17:30**



## Fleetwood's Charity School (FY6 0NN)

**NORMAL DAY (£12.50 PER DAY):**

**TIME: 09:00-16:00**

**LATE PICKUP (+£5 PER DAY):**

**TIME: 16:00-17:30**

## Poolfoot Farm (FY5 4HX)

**NORMAL DAY (£12.50 PER DAY):**

**TIME: 09:00-16:00**

**NO LATE PICKUP**

- Multisports, Games & Activities
- Fun Competitions Every Day
- Weekly Prizes
- Daily Themed Sessions

TO BOOK YOUR PLACE VISIT: [FTCT.EZFACILITY.COM](http://FTCT.EZFACILITY.COM)  
FOR ANY INFORMATION CONTACT: [COMMUNITY@FLEETWOODTOWNFC.COM](mailto:COMMUNITY@FLEETWOODTOWNFC.COM)  
OR CALL: 01253 208 442



# What Parents & Carers Need to Know about TWITTER

## WHAT ARE THE RISKS?

Twitter is a social media network which allows users to post short messages ('tweets') of up to 280 characters. Tweets can consist of text, photos, videos, audio, links, polls and GIFs – often linked by hashtags if they share a common theme or message. Hashtags receiving high levels of interest are said to be 'trending'. Twitter users can engage with other people's posts by liking, retweeting (sharing) or tweeting back (commenting on). Since the entrepreneur Elon Musk acquired Twitter in October 2022 for \$44 billion, he has implemented several major changes to the platform.

AGE RESTRICTION  
**13+**

## INTERACTION WITH STRANGERS

Tweets are public by default, meaning that anyone can view and interact with posts, follow someone and send direct messages. The concern here is that young people may therefore connect and communicate with strangers. Some individuals may follow a young person's Twitter account simply because they have similar interests; however, others may turn out to have more sinister intentions.

## FIXATION ON VIEW COUNT

Twitter has recently introduced a 'view count' feature – telling users how many people have seen their tweet (even if they haven't reacted to it). Previous research has found that unfavourable comparisons with other social media users can cause young people to experience feelings of insecurity, jealousy and low self-esteem – leading to an obsession with increasing their numbers.

## TROLLS AND BULLYING

The anonymity offered by fake profiles encourages some users to send tweets designed to provoke a reaction; to disrupt conversations; to spark an argument; or to harass the recipient. Such trolling and bullying can impact the mental wellbeing of both the target and anyone who witnesses it. Encourage your child to come to you if they experience such behaviour on Twitter, or if they see it taking place.

## PAID-FOR VERIFICATION

Previously, if a Twitter profile displayed a blue tick icon, it meant that the owner – usually a celebrity or a major organisation – had been verified as genuine. Now, however, anyone can pay for a Twitter Blue subscription to receive the tick, with the platform carrying out limited checks on the account's authenticity. This could easily lead to more fake accounts impersonating real people or companies.

## CONTENT MODERATION CHANGES

In late 2022, Twitter stated that their 'policy enforcement will rely more heavily on de-amplification of violative content: freedom of speech, but not freedom of reach'. No policies have changed yet, but this wording suggests they may limit who can see posts rather than removing them. While supporting free speech, this could encourage an environment where some toxic content remains online.

## HIJACKED HASHTAGS

The hashtag (#) is one of Twitter's most recognisable facets, allowing users to find specific trends or topics. But the sheer volume of tweets each hour can rapidly distort a hashtag's meaning: an initially innocent search term can quickly end up returning inappropriate results. This is common with 'trending' hashtags, as people know that using them will get their tweet seen by a larger audience.

## Advice for Parents & Carers

### SET ACCOUNTS TO PRIVATE

To reduce some of the fear of your child's tweets being seen and shared by anyone, you can always make their account protected. This means that your child has to give approval for another user to view their posts. You can change Twitter's privacy settings so that your child can't be messaged directly by other people on the platform and their geographical location won't be shared.

### EXPLORE THE NEW SETTINGS

Previously, any user could reply to anyone else's tweets. However, the new conversation settings let your child determine who can reply to their posts – either by selecting everyone (the default option), people they follow or only people they mention (using the @ symbol). This improvement has given users extra control, providing them with more protection from trolls and online abuse.

### FOSTER CRITICAL THINKING

It can be difficult for anyone to ascertain if something online is real or false, but particularly for young people. Encourage your child to check several reputable sources to determine if a story they've seen is true; remind them to watch out for scams and think about the message's possible motive. Emphasise that it's not a good idea to retweet something if they aren't sure it's correct.

### PAUSE BEFORE POSTING

It's important that young people think about what they're about to post and whether they might regret it later. Twitter has developed 'nudges': little prompts which appear if someone is about to tweet using harmful or offensive language. These nudges promote more positive online behaviour by giving users an opportunity to pause and consider their words before they post something.

### ENGAGE SAFETY MODE

When Safety Mode is activated, Twitter checks for abusive or spammy behaviour such as hurtful language or repeated negative replies. The platform then flags these suspect accounts and blocks them from responding to your child's tweets. The autoblock function then prevents these accounts from interacting with your child's again for seven days.

### BLOCK, REPORT OR MUTE

If someone is upsetting your child on Twitter, you can block and report them. Blocking stops them from messaging or following your child, while reporting an account alerts Twitter to investigate possible misuse. The 'mute' feature, meanwhile, keeps tweets from a specific account (or which include certain words) out of your child's timeline. The other user won't know that they've been muted.

### BE CAREFUL WHO TO FOLLOW

As accounts are no longer being as rigorously verified under the 'blue tick' system, it's essential that young Twitter users understand what this means. In terms of people not necessarily being who they claim. Anyone who your child only knows online is still a stranger, regardless of how long they've been communicating for. Remind your child never to disclose personal information on social media.

## Meet Our Expert

Dr Claire Sutherland is an online safety consultant, educator and researcher who has developed and implemented anti-bullying and cyber safety policies for schools. She has written various academic papers and carried out research for the Australian government comparing internet use and sexting behaviour of young people in the UK, USA and Australia.



**NOS**  
**National Online Safety®**  
**#WakeUpWednesday**

Source: <https://blog.twitter.com/common-thread/en/topics/stories/2022/how-twitter-is-nudging-users-healthier-conversations> | [https://blog.twitter.com/en\\_us/topics/product/2022/twitter-blue-update](https://blog.twitter.com/en_us/topics/product/2022/twitter-blue-update)  
[https://blog.twitter.com/en\\_us/topics/company/2022/twitter-2-0-our-continued-commitment-to-the-public-conversation](https://blog.twitter.com/en_us/topics/company/2022/twitter-2-0-our-continued-commitment-to-the-public-conversation) | <https://scholarworks.lib.csusb.edu/cgi/viewcontent.cgi?article=213&context=etd>