

Friday 24th February 2023



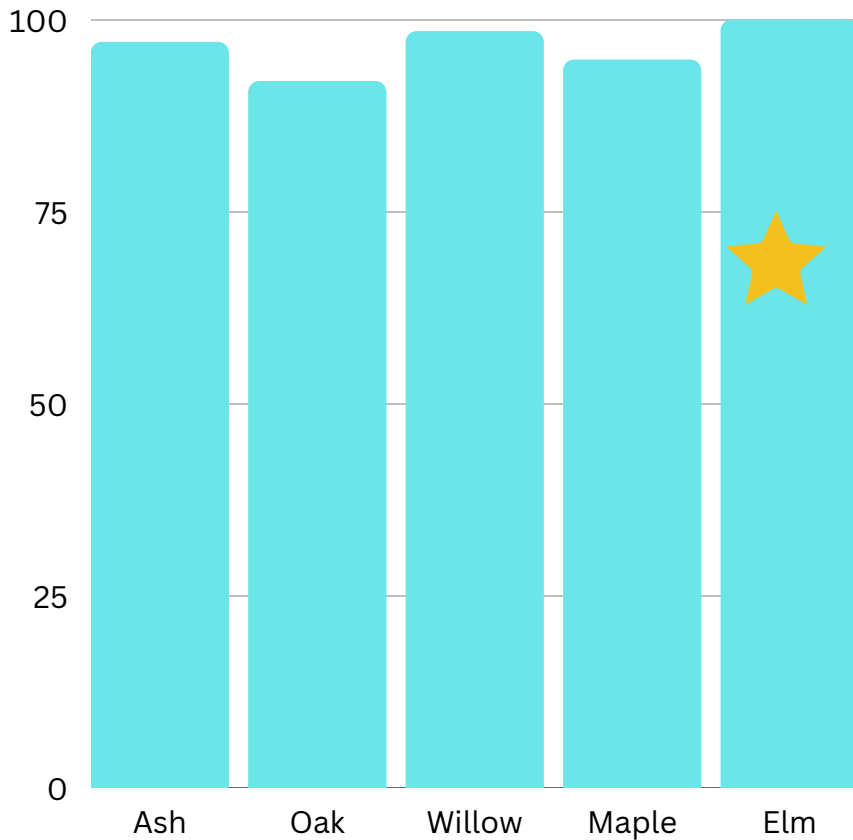
# Newsletter



## Highlights

- Our Book Fair arrived in school! The children have really enjoyed looking at the books and sharing some of the stories with their teachers. It is a fabulous fundraising opportunity for school, and it is open this afternoon, Monday and Tuesday 3:30pm - 4pm.
- Parents' Evening was very well attended – thank you for taking the time to come and talk to the class teachers.
- Shrove Tuesday – there were a lot of pancakes consumed in school on Tuesday and I received some great photographs showing pupils preparing, cooking and eating pancakes at home!

# Attendance



The whole school attendance for this week is 96.2%, with Elm class having 100% attendance this week.

A key priority throughout schools is to improve attendance; though we appreciate that illness is unavoidable, we do ask that absences are kept to an absolute minimum where possible.

Please ensure all absence is reported to the answerphone before 9am on *each* day of absence - 01253 810324 option 1

## Our Lent Challenge

We have decided as a school, that our Lent Challenge this year will be to try to include daily acts of kindness. Pupils will be able to nominate children or adults who have displayed an act of kindness and we will aim to fill our worship display board in the hall with examples.

## Homework

You should now have received your child's new homework menu for the half-term. Our aim is for all pupils to complete and share at least one piece of homework. Last term 78% of pupils completed homework tasks.

## Welly Wall

You may have noticed that we now have a new Welly Wall on the playground. This was made after feedback from the School Council identified that pupils would like to be able to play on the equipment on the grass through the year instead of just in summer.

We now need parents to donate wellies that children have grown out of so we have a communal collection for children to use at break times. Ideally we would like wellies from size 12 to size 5. Alternatively, you may like to purchase us a pair of wellies for the welly wall. All donations would be very gratefully accepted!



## Contacting School

There are times when the school office is not manned - 8:45-9am; 12-1 and 3:25-3:35pm as Mrs Adams is on outside duty or lunch duty. Please try to avoid calling at these times. We are both in and out of the office all day, if you can't get hold of anyone by phone, please send an email to [bursar@fleetwoods.lancs.sch.uk](mailto:bursar@fleetwoods.lancs.sch.uk).

## Celebration of Music Concert

There are 47 pupils from Year 2 to Year 6 performing at this event at the Winter Gardens on Monday 6th March. If your child is involved they should have brought home a letter with details for the day of the event. There is a reply slip that needs to come back into school by Thursday 2nd March.

## Commonwealth Day - Monday 13th March

We have been asked by Preesall Town Council if we would like to attend this event so our Head Boy and Girl team will represent school.

The Mayor will raise the Commonwealth Flag at 10am and read the Commonwealth Affirmation.

The event will take place on the Esplanade at the NatWest corner.

## Lunches

**Please complete the lunch form for ALL pupils in school**  
<https://forms.office.com/r/exTQMJtNLL>

## School Open Session – Wednesday 1st March 9:45-11:45am

Next week, we are opening up school to parents so you can come and see how we teach reading in school from Early Years, right up to Year 6. Parking will be available on the junior playground.

Miss Moore and Mrs Oxley will also deliver a short session to parents of pupils in Pre-School, Ash and Oak Class about how you can help support your child with phonics or reading at home. This will be at 10:45am.

## Mothering Sunday – Sunday 19th March

We have been asked by St. Oswald's Church if some of our pupils can take part in their Mothering Sunday service at 10:30am. If your child is available to be part of this, please can you email Mrs Gladwin? This can be pupils of any age. Parents are also welcome to attend the service.

## Collection from school

At the start of the year, parents are asked who the named adults are who have permission to collect their child/children from school. If you need someone different to collect your child/children occasionally, please ring the office and let us know beforehand. Teachers will not release pupils to other adults or without a phone call being made to you to check this has been agreed.

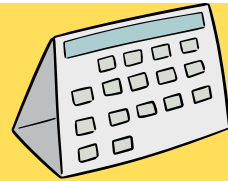


Here are the fun packed activities planned for next week in the Woodland Den.

Please book on via ParentPay - sessions run until 4:30pm (half session) or 5:30pm (full session), and all children are provided with a drink and a snack. Booking closes 48 in advance online, but contact the office if you need a last minute place in the afterschool club.

Date	Activity	Snack
27/02/23	Fruit Kebabs	Fruit Creations
28/02/23	St Davids Day Craft ~ Flower Making	Cheese or Ham Wrap
01/03/23	Laptops & I-pads	Crackers
02/03/23	Outdoor Games	Rice cakes and nibbles
03/03/23	Reading Stories	Brioche and Breadsticks

**Until Tuesday 28/2/23** - Book Fair in school



**Monday 6/3/23** - Celebration of Music @ Blackpool Winter Gardens

**Tuesday 7/3/23** - Glow in the dark Dodgeball taster session for each class

**Wednesday 8/3/23** - World Maths Day - focus on Maths activities

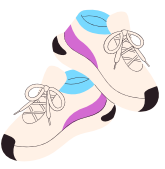
**Monday 13/3/23** - Commonwealth Day (see above)

**Tuesday 14/3/23** - KS2 Athletics County Finals 10am - 12pm @ Blackpool Sports Centre

**Friday 17/3/23** - Comic Relief Day (details will be posted on ClassDojo)

**Sunday 19/3/23** - Mothering Sunday Service at St Oswald's Church (see above)

**Friday 31/3/23** - School closes for Easter holiday



# PE and Forest days Spring 2



Pupils should wear PE kit to school on the days detailed as PE, and on Forest days they should bring their kit with them to change in to. Details of PE kit can be found on our website.

Day	Monday	Tuesday	Wednesday	Thursday	Friday
Ash			PE		<u>Forest</u>
Oak				PE	PE
Willow	PE		Forest		
Maple	PE		PE		
Elm			PE		<u>PE</u>



## ECO WARRIOR TEAM



Later in the term we will be introducing an eco- poster competition -more details to follow.

Due to our new flexible break times, a new timetable will be shared with classes so that each class has a day of the week to litter pick.

Our Eco Team were great at sharing their amazing ideas, including the suggestion of a possible coffee morning in Summer term to raise some money for further litter pickers/eco related resources.



# What Parents & Carers Need to Know about

# SPOTIFY

Spotify is a digital music, podcast and video service which gives users access to millions of songs and other content from creators all over the world. Since launching in 2008, Spotify has revolutionised the way music is listened to: it now offers the ability to manage and share more than 100 million tracks and five million podcast series, plus personalised recommendations, new release updates and the option to create collaborative playlists. As of February 2023, it is the world's most popular audio streaming subscription service with 489 million users globally.

## WHAT ARE THE RISKS?

### EXPLICIT LYRICS

As per Spotify's terms and conditions, people need to be at least 13 to use it. That said, the platform doesn't censor lyrics unless instructed to do so in the settings – so it's worth noting that young teenagers could still be exposed to age-inappropriate songs which contain explicit references to sexual behaviour, violence, discriminatory language and swearing.

### GROOMING TACTICS

Although Spotify doesn't come with dedicated chat functionality, concerns were raised in January 2023 after reports of an 11-year-old girl being coerced into sharing explicit pictures of herself on the platform. The case highlighted predators' tactics of sharing empty playlists with other users: their messages were being exchanged undetected through edited song titles and descriptions, bypassing security measures.

### OVERSHARING

Spotify provides a perfect way to play music, with the ability to connect to another device, such as a Bluetooth speaker or an in-car stereo. While this is a useful feature, it's also easy to forget your surroundings and inadvertently play content which isn't appropriate for all listeners (especially those under the age of 18), potentially causing alarm or distress.

### AGE-INAPPROPRIATE PODCASTS

Spotify's podcast community has grown exponentially and it's become a popular base for millions of users to listen to shows, stories, interviews and more – with content covering an array of topics. This includes some material which isn't suitable for minors, including audio which is obviously adult-themed, but can be just as easily accessed as everything else.

### ACCESS TO SPOTIFY LIVE

If your child has a Spotify account, they'll also be able to access the platform's audio-only chat service: Spotify Live. While it's a separate stand-alone app, Spotify Live allows people to listen to live discussions on the main Spotify platform and, more notably, lets users enter virtual rooms to chat with other users, opening up direct conversations with strangers and individuals who might not necessarily be there for the right reasons.

## Advice for Parents & Carers

### SWAP TO SPOTIFY KIDS

If you're concerned about what your child might hear while streaming music, Spotify Kids is a separate, ad-free service specifically designed for children aged 12 and under. It allows younger users to enjoy human-curated, child-friendly content (such as music and audiobooks) and is available to users with a Spotify Premium Family subscription – meaning that parents can view and manage the content their child listens to.

### CENSOR EXPLICIT CONTENT

Regardless of what type of account your child uses to access Spotify, there is an option to turn off explicit content in the settings – greying out all songs marked with an 'E' tag. If your child has their own individual account, it's easier for them to turn it back on – whereas with a family plan, you're in control and your child can't alter the setting without knowing the password.



### TALK ABOUT THE RISKS

As with any platform, it's good practice to talk to your child about what they should be aware of when using Spotify. For instance, it's important they're aware never to share any personal information with strangers, and what they should do if they're exposed to inappropriate content. Encourage them to think critically about what they see and hear so that they feel comfortable raising any concerns with you.

### KEEP AN EYE OUT

If you're concerned that your child is spending too much time on Spotify or you've noticed they're being particularly secretive about how they're using it, encourage them to talk about what they're listening to. It's always prudent to show an interest in their online habits from the outset – so you're confident they're using apps and services in the right way, for the right reasons, and they're not being drawn into anything they shouldn't be.

## Meet Our Expert

Carly Page is an experienced technology journalist with a track record of more than 10 years in the industry. Previously the editor of tech tabloid *The Inquirer*, Carly is now a freelance technology journalist, editor and consultant.



**NOS** National Online Safety®  
#WakeUpWednesday