



University Hospitals of
Morecambe Bay
NHS Foundation Trust





How many people do you think work for the NHS in Britain?



1,500,000

Around One and half million
people work for the NHS

University Hospitals of Morecambe Bay Trust, is one of 215 Trusts in the NHS



Furness General Hospital
Westmorland General Hospital
Royal Lancaster Infirmary

Around 9,000
employees

NHS Values

NHS based on 3 core principles:

- That it meets the needs of everyone.
- That it is free at the point of delivery.
- That it is based on clinical need, not the ability to pay

Compassionate, respectful, inclusive, open, honest & transparent



350+ Careers in NHS



Allied health professionals (AHPs)

Specialists who treat and rehabilitate. From art therapists to physiotherapists.



Ambulance service team

More than flashing blue lights. You'll be a caring, calm, good communicator.



Dental team

Looking after the oral health and wider health of patients.



Doctors

Preventing ill health, treating disease and improving wellbeing in 60+ specialties.



Health informatics

The experts who use information and technology to drive patient care.



Healthcare science

Experts in technology and science to prevent, diagnose and treat disease.



Management

Managing people, money, buildings and projects to keep the NHS moving forward.



Medical associate professions

Supporting doctors and nurses to release their time for more complex cases.



Midwifery

Supporting women in communities and hospitals before, during and after childbirth.



Nursing

A huge range of specialisms including children's nursing and mental health.



Pharmacy

Dispensing and offering advice about medicines for staff and patients.



Psychological professions

Tackling mental health problems and promoting wellbeing.



Public health

Protecting people from threats to their health and helping them stay healthy.



Wider healthcare team

Keeping the NHS moving – feeding patients, delivering supplies, maintenance.



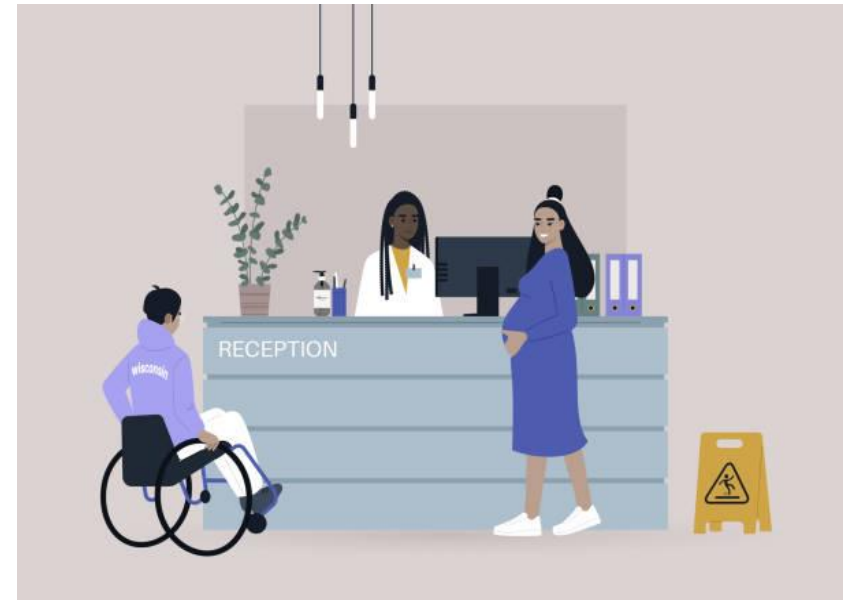
Clinical staff

Nurse, doctor,
radiographer, midwife,
occupational therapist,
physiotherapist,
surgeon, dentist,
optician.



Non-Clinical staff

Administration, IT, Finance, Tech Support, Human Resources, Estates, Facilities, Security, Maintenance, Catering, Chaplaincy, Careers Team, Drivers, Porters, Specialist cleaners, Infection Prevention, Research & Laboratories...



Banding	Salary (January 2025)	Example Job Role
Band 1 & 2	£22,383 - 22,383	Domestic/cleaner, driver, health care assistant/clinical support worker, catering assistant, nursery assistant
Band 3	£22,816 - £24,336	Emergency care assistants, clinical coding officers, estates officers, occupational therapy workers, administration assistant
Band 4	£25,147 - £27,596	Pharmacy technician, assistant practitioner, dental nurse, theatre support worker
Band 5	£28,407 - £34,581	Newly Qualified Nurse/doctor, operating department practitioner (ODP), podiatrist, learning disability nurse, therapeutic radiographer, physiotherapist, ICT Test analyst
Band 6	£35,392 - £42,618	School nurse, experienced paramedic, biomedical scientist, health records manager, clinical psychology trainee
Band 7	£43,742- £50,056	Communications manager, estates manager, advanced speech & language therapist
Band 8a	£50,952 - £57,349	Dental laboratory manager, project programme management, modern matron (nursing) nurse consultant (mental health nursing)
Band 8b	£58,972 - £68,525	Strategic manager, head of education & training, head orthoptist, clinical physiology manager. (General Practice Doctor)
Band 8c	£70,417 - £81,138	Head of human resources, consultant paramedic, consultant clinical scientist.
Band 8d	£83,571 - £96,376	Consultant psychologist, chief finance manager, chief nurse
Band 9	£99,891 - £114,949	Surgical consultants & department directors





<https://nhscareersnw.co.uk/>



Careers
in health and social care



[About Us](#)

[Work With Us](#)

[What We Do](#)

[Volunteering](#)

[Vacancies](#)

[Resources](#)

[Contact Us](#)

[Upcoming Events](#)

[My Account](#)



Apprenticeships

- Apprenticeship Pathways
- Clinical and Non-clinical
- Features and Benefits

[Learn More](#)

Placements

Programmes

Events

Aspire E-Learning

Contact the UHMBT Careers & Apprenticeships Team;

work.experience@mbht.nhs.uk

Or

apprenticeships@mbht.nhs.uk

Jobs website [Jobs at UHMBT :: University Hospitals of
Morecambe Bay NHS Foundation Trust](#)

