



Gatley Primary School

Risk Assessment Overview for Parents

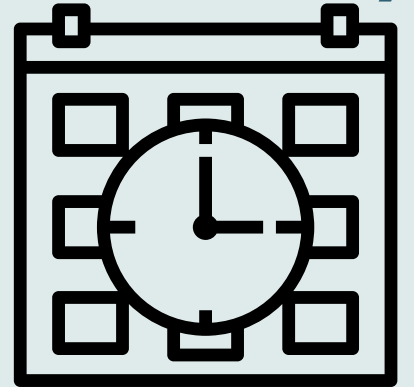
*In creating a Covid-Standard Risk Assessment, the school has identified risks, how they are rated and what control measures can be put in place to lower the risks. Below is a summary of **some** of the key control measures which will be put in place to lower the risks we have identified.*

Contact will be minimised between classes across the school



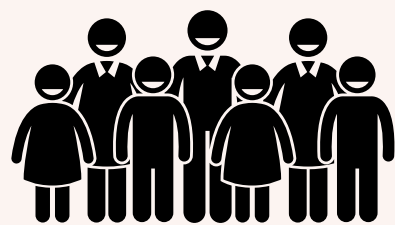
This includes classes having protected spaces for dining, learning and playtimes.

Continue to use your selected start and end time and designated entry and exit points



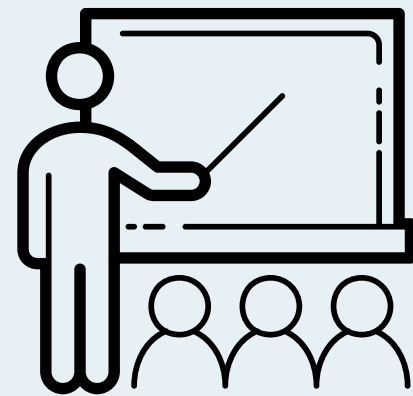
The times will be in two waves: 8.40–3.10 and 9.00–3.30. This is essential to support the safe travel arrangements to and from the school.

All of our children will be back full time from Monday 8th March and Nursery will attend their usual sessions



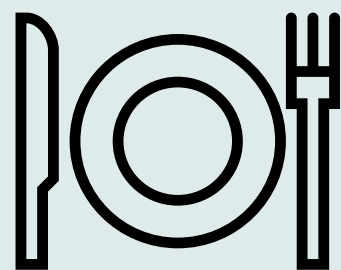
Attendance will be compulsory. If you have concerns or worries please contact the class teacher.

The classroom layout will be adapted



The school will look to lifting measures in line with the national road map and within our risk assessment review. At all times prioritising safety, wellbeing, and seeking to minimise disruption to learning.

Children will be able to access hot school dinners



A revised and full menu will be available from Monday 8 March via the Scopay App.

The curriculum will continue to be adapted to meet the needs of pupils

The curriculum will have a whole school focus on pupil choice, achievement and reintegration of learning behaviours.

Upon return to school, teachers will facilitate discussions with children to identify where their next steps lie. This information, alongside teacher knowledge, will be used to inform the direction of travel of children's learning.

More information will be shared at virtual parents evening later this term.



Cleaning and personal hygiene remains essential



Pupils and staff will continue to regularly wash and sanitise their hands. Regular touch surfaces will be cleaned throughout the school day.

All absences must be reported to the school office

You and your household must isolate if:

- 1) a member of the household is symptomatic and awaiting test results. You must isolate from onset of symptoms and book a test.
- 2) a member of the household has tested positive.
- 2) somebody in your support bubble or childcare bubble has tested positive.
- 3) you are identified as a close contact of a positive case.

If your child needs to isolate you must contact school on **07701368767** at the earliest opportunity. Between 8:00 am and 3:30 pm please contact the school office on 428 6180. All non-Covid absences should be reported to the school office after 8:00 am and before 8:40 am.



There are many more control measures in the school risk assessment which can be found on the Gatley Primary School website under the 'Covid-19 Information' tab on the options bar on the home page.

