

**Welcome to**

# **GATLEY PRIMARY SCHOOL**

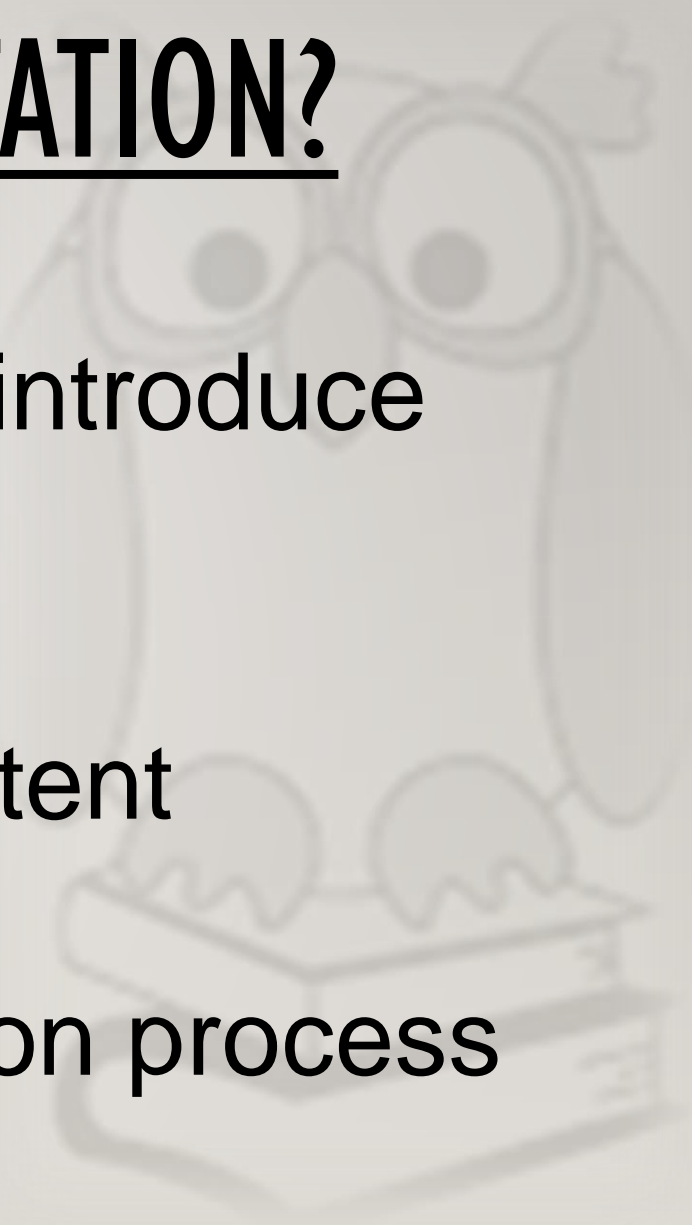
---

**ENJOYING LEARNING AND ACHIEVING TOGETHER**

**Reception 2024**

# WHY DO WE HAVE THIS PRESENTATION?

- To welcome you to our school and introduce members of staff
- To discuss our curriculum and its intent
- To outline the transition and induction process for September

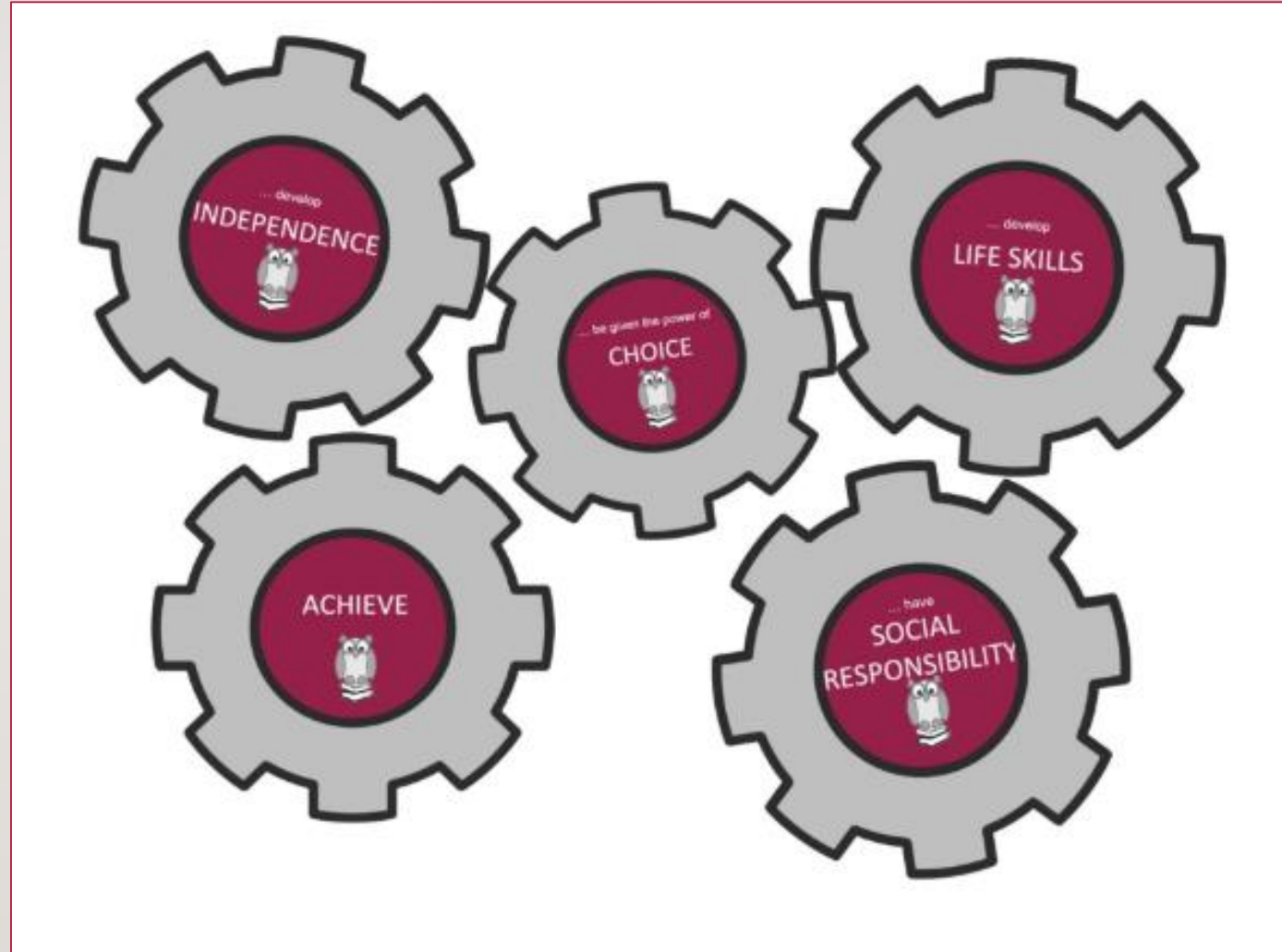


# WELCOME PACKS

- Welcome letter confirming teacher/group/transition dates (including September)
- Dojo login (if not already in nursery) – this will form vital communication with your child's class teacher
- Information about school age immunisations
- Uniform overview and supplier leaflet
- Medical conditions in school overview
- Uniform policy
- Attendance and registration policy
- Standards of behaviour and learning policy
- School hub parent user guide regarding school lunches
- EYFS checklist

# Our School Values

This vision is encapsulated within our vision statement, **"Enjoying Learning and Achieving Together."**





# Characteristics of Effective Learning

## **Playing and exploring – engagement**

Finding out and exploring  
Playing with what they know  
Being willing to 'have a go'

## **Active learning – motivation**

Being involved and concentrating  
Keeping trying  
Enjoying achieving what they set out to do

## **Creating and thinking critically – thinking**

Having their own ideas  
Making links  
Choosing ways to do things



**The Early Years Foundation Stage Framework (EYFS) sets out the learning and development stages for children as they grow from birth to five years.**

## **Early Years Foundation Stage Framework 2021**

The EYFS curriculum is split into **Prime** and **Specific** areas. The specific areas provide the range of experiences and opportunities for children to broaden their knowledge and skills:

The **Prime Areas** of learning are:

Personal, Social and Emotional Development;  
Communication and Language;  
Physical Development.

The **Specific Areas** of learning are:

Literacy;  
Mathematics;  
Understanding the World;  
Expressive Arts and Design.



# Our Curriculum

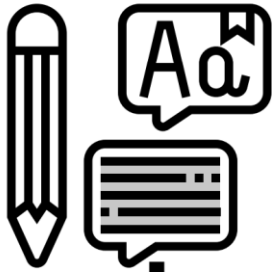
We offer a **Curious** curriculum, explored in **Collaboration**, developing **Comprehension** and **Connectivity** enabling **Compassion** and **Creativity** for all.





# *Our Curriculum*

We offer a **Curious** curriculum, explored in **Collaboration**, developing **Comprehension** and **Connectivity** enabling **Compassion** and **Creativity** for all.



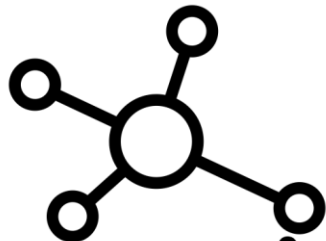
**Comprehension**



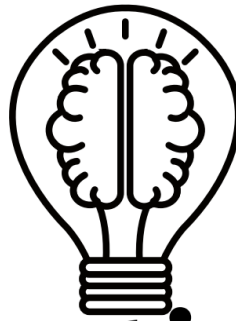
**Collaboration**



**Curiosity**



**Connectivity**



**Creativity**



**Compassion**

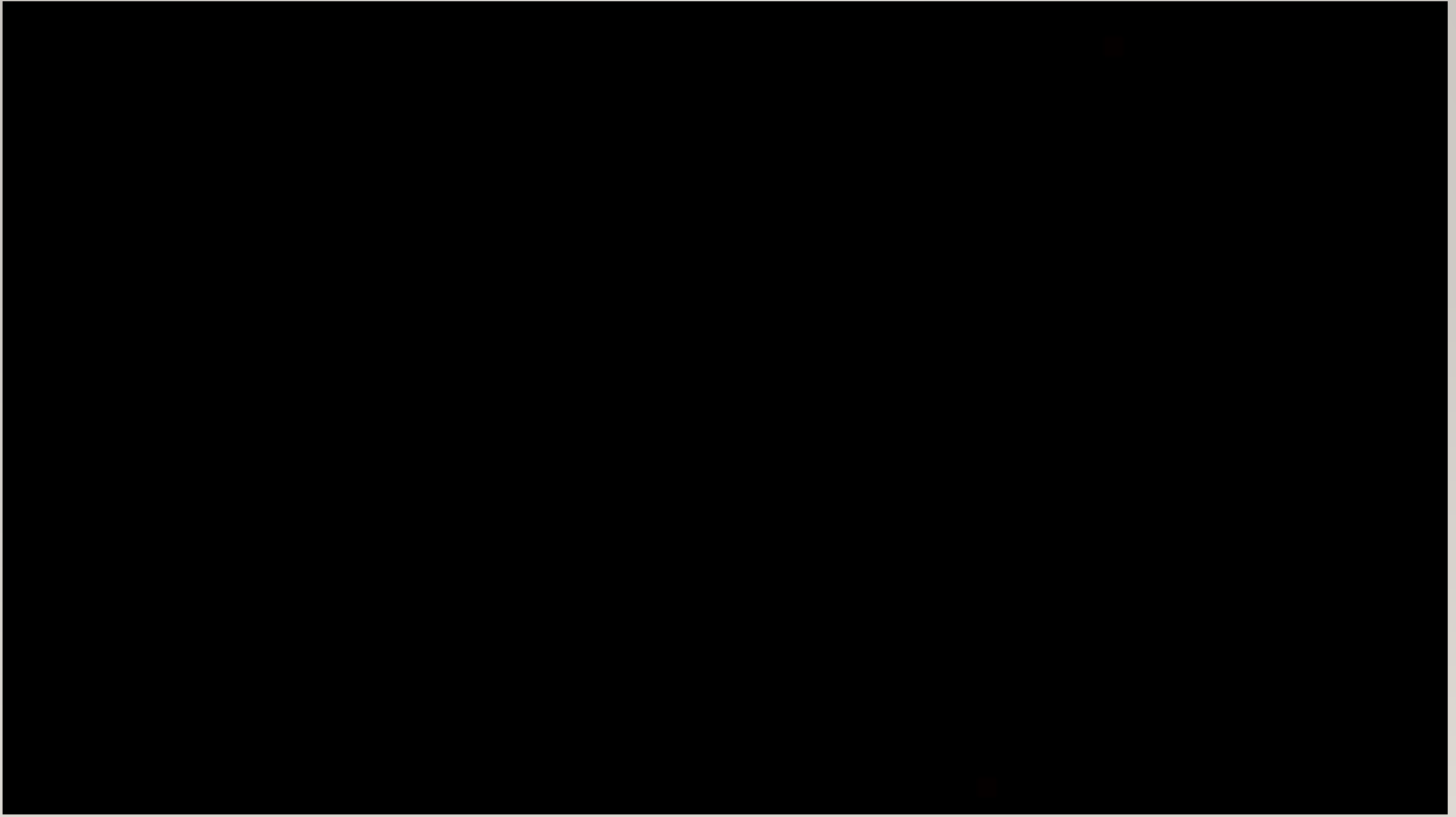


# SHARING OUR LEARNING

---



- Class Dojo is a **whole school reward system**, linked directly to our **behaviour policy** in school.
- Class Dojo enables you to **see what we are learning** at school, via posts on **Class Story**.
- Class Dojo along with Parent Mail is used as one of our **main sources of communication**; it is used to **celebrate** and **disseminate** information by both class teachers and the senior leadership team.
- Each week, the children have a **target number of points** to achieve. If they earn all of the required points, they will receive a **reward at the end of the half term** that is **decided by the children**.



# EYFS Checklist - Name: \_\_\_\_\_

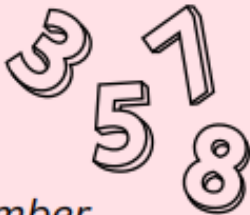
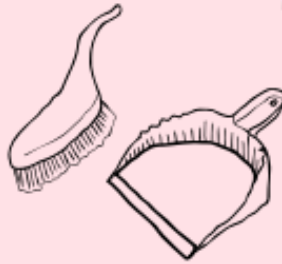
## Things I can do before starting Gatley Primary School

### Things I can do...

- Put my own coat on.
- Zip my coat up.
- Dress myself.
- Use scissors safely.
- Tell an adult when I need something.
- Play outside safely and share with others.
- Use cutlery to cut up and eat my food.
- Go to the toilet on my own.



- Wash my hands.
- Wait in a line.
- Hold a pencil or crayon.
- Follow instructions.
- Tidy my things away.
- Recognise my name.
- Say please and thank you.
- Count from 1 to 10.







## LATEST NEWS

3

06, 2024



### Transition Workshop

June 3, 2024 | [Event](#), [News](#)

Is your child aged 3 – 5 and due to start nursery or reception year at school in September 2024?

Are you or your child feeling anxious about this transition to [...]

# Wave Entry

Our school opening and closing times are 8:35am or 8:55am and 3:10pm or 3:30pm, and this operates in wave system.

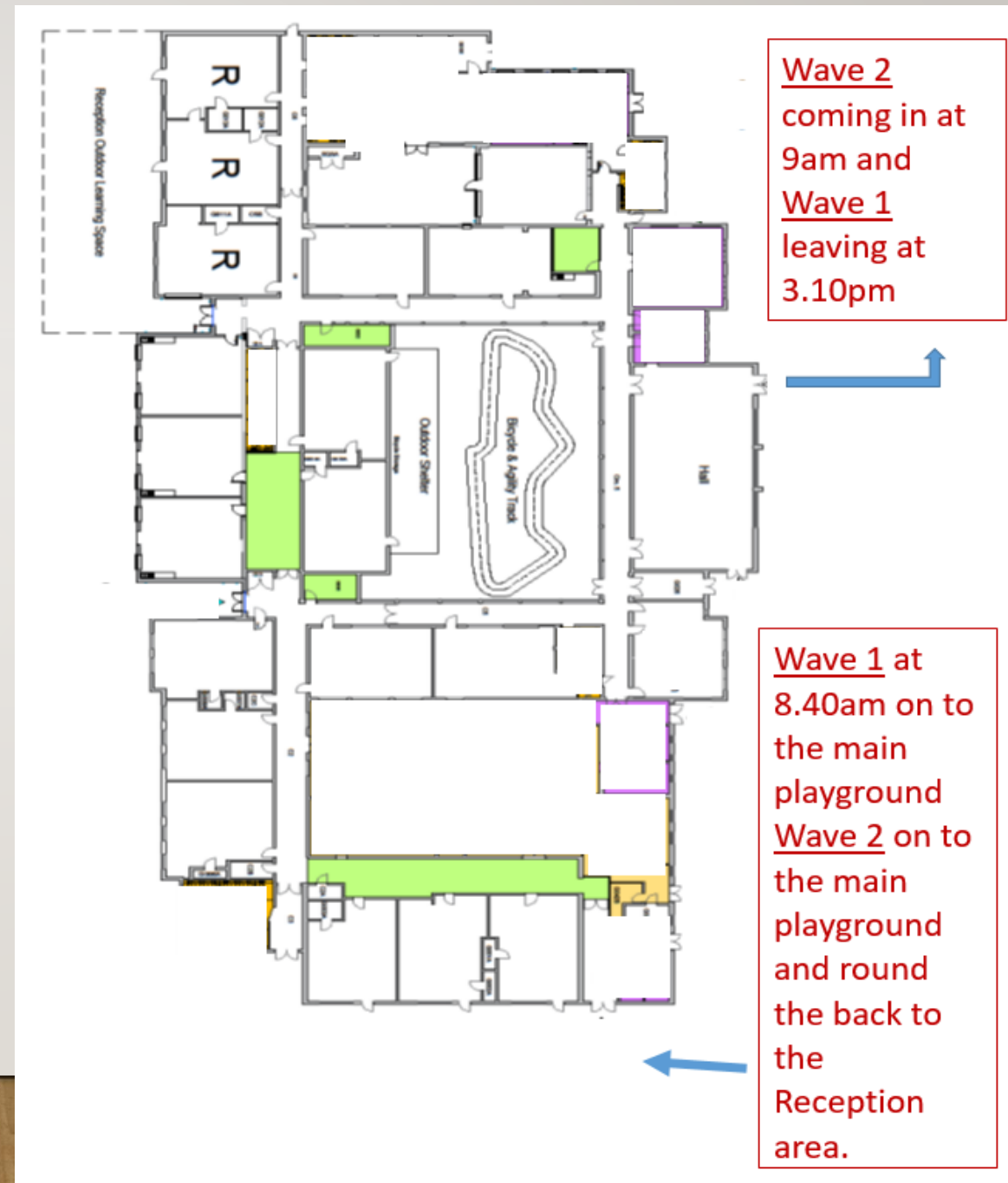
Wave 1- 8:35am – 3:10pm

Wave 2- 8:55am – 3:30pm

Wave 1 will enter onto the main playground and come in through their individual classroom door and leave via the Hall Door at 3:10pm.

Wave 2 will enter via the hall door at 9:00am and leave through their classroom door onto the main playground.


We do offer a range of Walking bus facilities from Bethany church, Scholes field and Gatley Hill.





# Transition Events — between now and the summer holidays

Tuesday, 2 <sup>nd</sup> July 2024	<b>Induction Evening</b>  In Gatley Primary School Hall at 6pm- 7pm
Tuesday, 9 <sup>h</sup> July 2024	<b>Induction Session 1 for Reception <u>children only</u></b> Group A 9.15am- 10.15am Group B 10.30am- 11.30am
Tuesday, 16 <sup>th</sup> July 2024	<b>Induction Session 2 for Reception <u>children only</u></b> Group A 9.15am- 10.15am Group B 10.30am- 11.30am
Tuesday, 16 <sup>th</sup> July 2024	<b>Optional attendance: Summer Fair</b>  At Gatley Primary School – you are warmly welcomed to attend this whole school event!



Bring an object along to this transition session. Something of interest to them that your child share with their new class.



# INDUCTION SEPTEMBER 2024

## Week 1:

**\*This is the same group as you attended for the transition sessions in June and July.**

<b>Tuesday, 3<sup>rd</sup> &amp; Wednesday, 4<sup>th</sup> September 2024</b>	<b>Half Day Settling-in Session for <u>children only</u></b> <b>Group A 9.00am- 11.30am</b> <b>Group B 12.30pm- 3.00pm</b>
<b>Thursday, 5<sup>th</sup> September 2024</b>	<b>Half Day &amp; stay for Lunch for <u>children only</u></b> All children attend school 9.00am-12.30pm (collection after lunch)
<b>Friday, 6<sup>th</sup> September onwards</b>	<b>Full day -</b>

**First Full school day-** Please refer to your chosen Wave time for start and end times for school.

**Wave 1-** 8:35am – 3:10pm

**Wave 2-** 8:55am – 3:30pm

**Week 2:** Children will continue school with a full timetable from the week commencing Monday 9<sup>th</sup> September 2024.



# GENERAL REMINDERS

- ✓ Uniform **named**
- ✓ Water Bottle - Provided by school in the first week **named**
- ✓ Back pack - Provided by school in first week **named**
- ✓ PE kit (white t-shirt, black shorts, pumps)- **names on them**
- ✓ Dinner log in will be given during the half days in September
- ✓ Spare set of clothes – **names on them**
- ✓ No jewellery or toys – **including earrings**
- ✓ Avoid nuts due to class allergies
- ✓ Forms via Parent Mail - **these should be completed now**
- ✓ Wellies- **names on them**

I was excited because I knew it was going to be really fun!

On the focus task you can work with your teacher and be really focussed.

When you start Reception you might feel nervous but when you make new friends you will be really happy.

I like playing and learning with my friends.

We do problem solving like measuring.

I was happy because I made new friends, I like to play with them.

When we are learning outside we can make lots of noise!