

The background is a solid teal color. Overlaid on this are several thick, white, hand-drawn style lines that form abstract, rounded rectangular shapes. These lines are not perfectly straight, giving the design a modern, organic feel.

Returning to School

A parents' guide



A key message

Should the Government deem it safe to begin Phase 2, Schools across the country will begin to reopen to children in addition to designated 'Key Worker' and 'Vulnerable ' families whom they have continued to remain open for during lockdown.

The Government has given guidance to support this reopening and the school has conducted a thorough Risk Assessment to find ways to mitigate all risks the reopening will bring. Please read this Risk Assessment, found on our website, to give clarity in how we will be reopening.

Please remember, whilst the Government feels this is an important next step, the decision on whether your child returns this academic year is a parental one. We encourage you to read all the guidance to support you in making this decision.

For those who do not return, whether down to parent choice, your child being unable to return due to medical needs, or your child being in a year group which is returning in Phase 3, please be reassured the home learning we have been providing will continue to be shared through ClassDojo for all year groups.

When will the children begin to return?

The School will reopen following the Whitsun break on week commencing 8th June 2020

The School has decided to use Monday 8th and Tuesday 9th to bring the children back in a staged response. We have done this to ensure as smooth a return as possible for each group of children. Each child will be grouped into a 'bubble' of 13/15 children from their year group. These groups will be based firstly on where the children live (in order to reduce as much unnecessary travel as possible) and then children's friendships groups will be considered to ensure the children are happy in their bubbles. Each 'bubble' will be labelled A-D, or A-F in Reception's case. We will let you know which group your child will be in through a personalised ParentMail. The children will remain in this 'bubble' until the Government states otherwise.

A timetable for our transition back: week commencing 8th June

Monday 8th June	Tuesday 9th June	Wednesday 10th June	Thursday 11th June	Friday 12th June
Staff Training Year 2-5 Key Worker children @ 1.00-3.30	Key Worker children @ 8.45-3.30	Key Worker children @ 8.45-3.30 Year 6 @ 8.30-3.00	Key Worker children @ 8.45-3.30 Year 6 @ 8.30-3.00 Year 1 @ 9.30-2.30	Key Worker children @ 8.45-3.30 Year 6 @ 8.30-3.00 Year 1 @ 9.30-2.30 Reception @ 9.00-2.00

What does our risk assessment look like?

In creating a COVID-Standard Risk assessment, the school has identified risks, how they are rated and what control measures can be in place to lower the risk. Below is a summary of some of the key control measures which will be put in place to lower the risks we have identified.

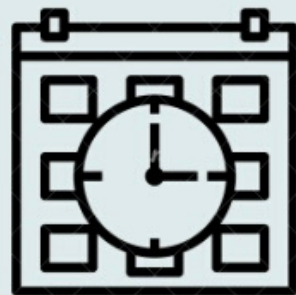
Children will be split into groups no larger than 15.

With designated staffing.



The daily timetable will adapt to promote and teach good hygiene.

Including hand washing, and the teaching of games to play in the playground which do not require contact.



Learning groups will have designated spaces.

Including learning spaces, play spaces and lunch spaces. A Map will be provided to show this.



The curriculum will be adapted to meet the needs of pupils following Covid.

With a focus on mental and physical health.



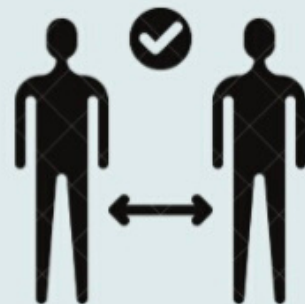
School equipment will be provided in a pupil care package.

Children will not need equipment such as PE bags or book bags. To help with the daily washing of clothes, they will NOT be required to wear uniform and will need to wear trainers for increased outdoor activities.



The building will be prepared to maintain social distancing.

Including signs, posters and a one way system. Classrooms will also be reconfigured to help maintain this.



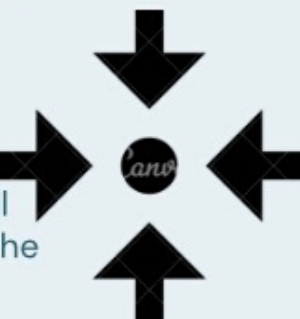
The level and frequency of cleaning will increase.

Including regular exposed and used spaces and regular use items such as door handles



There will be designated drop off and pick up points for children.

With specific collection times. A map will be provided to show this. Contact with the school building will be highly limited. Contact will be channelled through the school phone, email or through ClassDojo.



Please find a full copy of our risk assessment on our school website:
www.gatleyprimary.com/school-information/school-re-opening

Where will I drop my child(ren) off?

Using all 4 drop off and pick up points to reduce contact and support social distancing

The School is lucky to have a range of entries and exits to both the school grounds and the building itself. After much consideration to the impact on families, we have used your address to allocate the closest school drop off point. No parents or visitors will be able to visit the site without a prearranged appointment in order to reduce the number of people on site and possible opportunities for the virus to enter the school. Should you wish to talk to the class teacher, we will continue to use ClassDojo in this way, or you can ring the School Office.



The School will designate a drop off zone for your child(ren)

Staff from your child(ren)'s 'bubble' will collect your child and they will make their way into school.

It is essential your child is on time to their drop off point as the group will be leaving promptly. At the end of the school day, we will walk back to the same point.

'Why are we using these car parks rather than straight into school?'

There will be more than 250 children eligible to attend. Without this provision we would be unable to guarantee social distancing on Hawthorn Rd. Staggered start times and locations will reduce social contact.

This is the best way to support our families and as stated on our risk assessment parents must not enter the playground.

What will it look like after the first week?

This is the timetable until Phase 3 of the Government plan is announced.

Monday	Tuesday	Wednesday	Thursday	Friday
8.30 – 3.00 Year 6	8.30 – 3.00 Year 6	8.30 – 3.00 Year 6	8.30 – 3.00 Year 6	8.30 – 3.00 Year 6
9.00-2.00 Reception	9.00-2.00 Reception	9.00-2.00 Reception	9.00-2.00 Reception	9.00-2.00 Reception
9.30- 2.30 Year 1	9.30- 2.30 Year 1	9.30- 2.30 Year 1	9.30- 2.30 Year 1	9.30- 2.30 Year 1
10.00-1.30 Nursery	10.00-1.30 Nursery	10.00-1.30 Nursery	10.00-1.30 Nursery	10.00-1.30 Nursery

How will we ensure stringent social distancing inside of school?

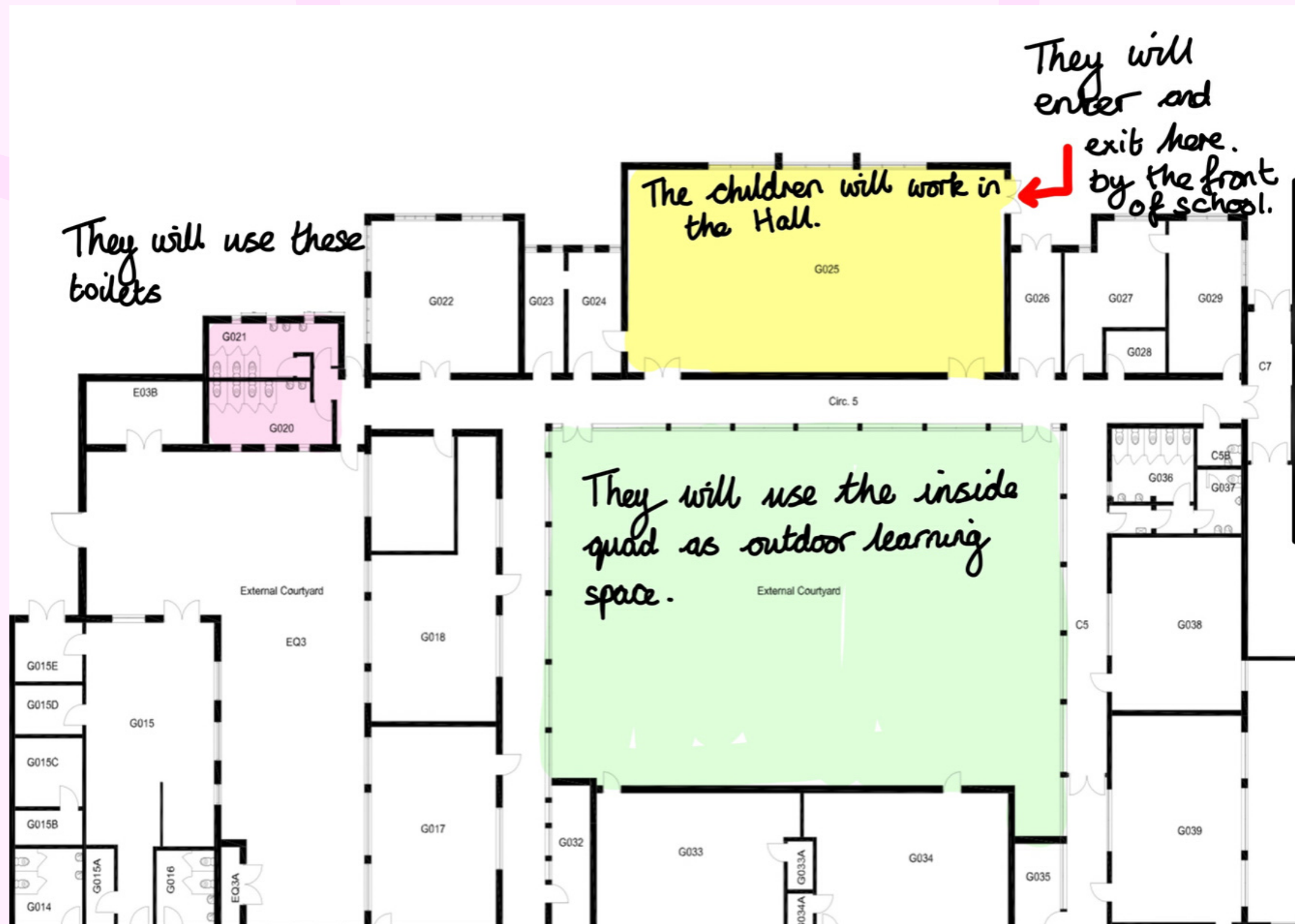
Classrooms- the classrooms have had any unused furniture removed and there is now one desk per child. Each chair is 2 metres apart in all directions.

Corridors - we now have a one way system around school so no children will be meeting in the corridors, as well as 2 metre markings on the floor to ensure distancing.

Toilets - there are designated toilets for the children and a limit as to who comes in and out. Only one child will be allowed to use the toilets at any one time.

How will it work in Nursery?

Children attending Nursery will be brought by parents to the hall fire doors near the main entrance. Parents must queue at a social distance and exit via the Nursery gates.

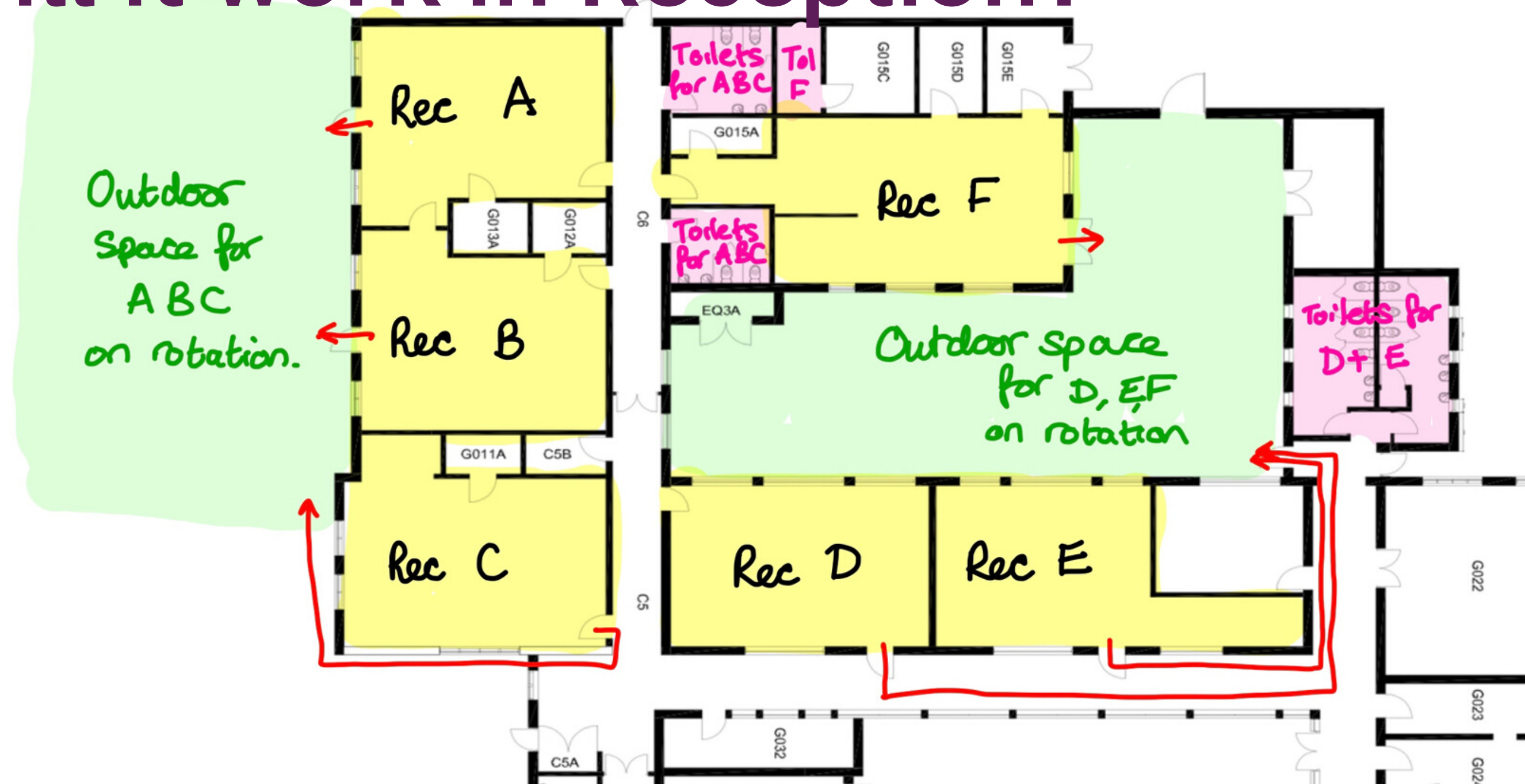


The current Nursery staff will be working with the children. This should mean the children feel comfortable. Unfortunately, if they are struggling to come in, we are unable to physically support them. If they are upset, we would ask you not to leave them.

Your child will be offered 2 days in the first instance.

How will it work in Reception?

The current Reception staff will be working with the children. There will be an adult with each bubble and your child's class teacher will oversee both bubbles at a social distance. This means all the children will see their teacher. This should mean the children feel comfortable. Unfortunately, if they are struggling to come in, we are unable to physically support them. If they are upset, we would ask you not to leave them.



The children will be completing exactly the same learning challenges at school as they would do at home. Feedback will be given to children through ClassDojo and we are hoping to upload learning from the focus task table so parents will continue to see some outcomes.

What will Reception's day look like?

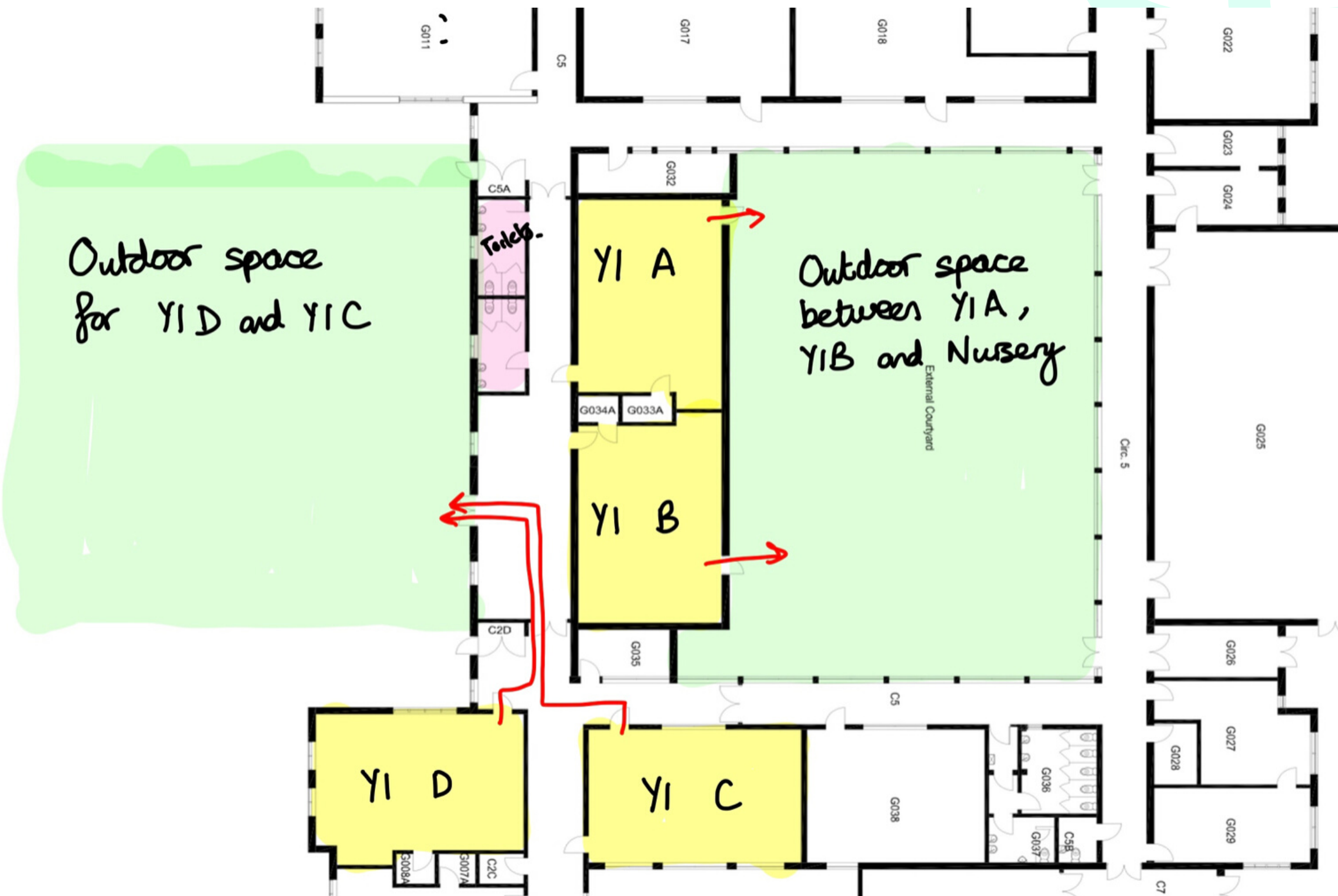
Reception

	9:00-9:45	9:45-10:30	10:30-11:00	11:00-11:30	11:30-12:00	12:00-12:30	12:30-13:00	13:00-13:30	13:30-14:00
A	Learning 1	PHYSICAL ACTIVITY (field A)	Mindfulness	Break	Eat	Learning 2	Learning 3	Break	Story
B	Learning 1	Mindfulness	Break	PHYSICAL ACTIVITY (field C)	Eat	Learning 2	Break	Learning 3	Story
C	Learning 1	Break	PHYSICAL ACTIVITY (field C)	Mindfulness	Eat	Break	Learning 2	Learning 3	Story
D	Learning 1	PHYSICAL ACTIVITY (field B)	Mindfulness	Break	Eat	Learning 2	Learning 3	Break	Story
E	Learning 1	Mindfulness	Break	PHYSICAL ACTIVITY (field D)	Eat	Learning 2	Break	Learning 3	Story
F	Learning 1	Break	PHYSICAL ACTIVITY (field D)	Mindfulness	Eat	Break	Learning 2	Learning 3	Story

What will it be like for Year 1?

The current Year 1 staff will be working with the children. There will be an adult with each bubble and your child's class teacher will oversee both bubbles at a social distance. This means all the children will see their teacher. This should mean the children feel comfortable. Unfortunately, if they are struggling to come in, we are unable to physically support them. If they are upset, we would ask you not to leave them.

The children will be completing exactly the same learning challenges at school as they would do at home. Feedback will be given to children through ClassDojo and we are hoping to upload learning from the focus task table so parents will continue to see some outcomes.



What will Year 1's day look like?

Year 1

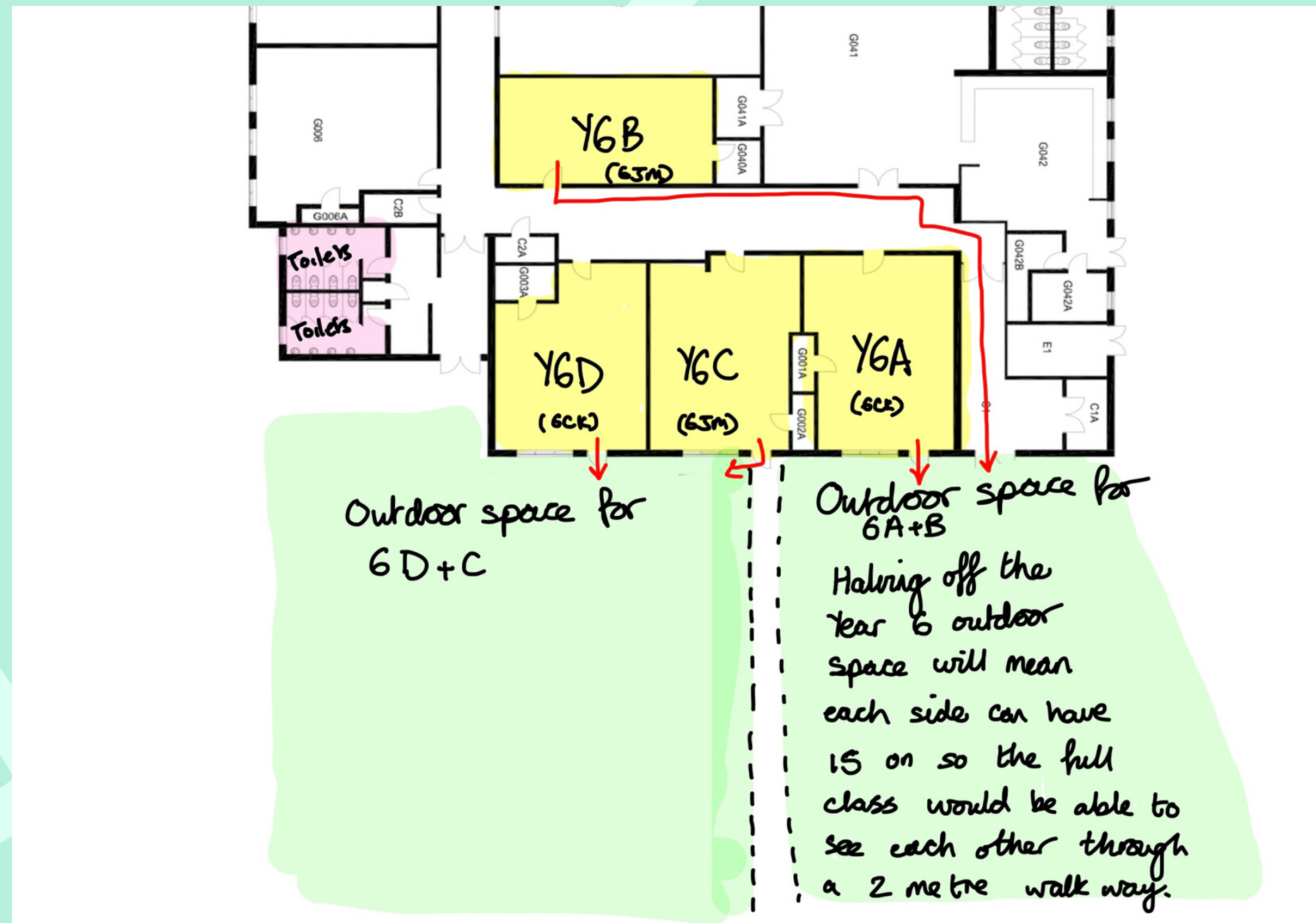
	9:30-10:20	10:20- 10:40	10:40-11:00	11:00-11:50	11:50-12:20	12:20-12:50	12:50-13:30	13:30-14:10	14:10-14:30
A	Learning 1	Break (outside)	Mindfulness/ Wellbeing	Learning 2	Play out	Eat	PHYSICAL ACTIVITY (field A)	Topic (outdoor)	Reading/end of day
B	Learning 1	Break (outside)	Mindfulness/ Wellbeing	Learning 2	Play out	Eat	PHYSICAL ACTIVITY (field B)	Topic (outdoor)	Reading/end of day
C	Learning 1 (outdoor)	Mindfulness/ wellbeing	Break (outside)	Learning 2	Eat	play out	Topic	PHYSICAL ACTIVITY (field C)	Reading/end of day
D	Learning 1 (outdoor)	Mindfulness/ wellbeing	Break (outside)	Learning 2	Eat	Play out	Topic	PHYSICAL ACTIVITY (field D)	Reading/end of day

What will it be like for Year 6?

We are currently looking at ways to offer everything the children were hoping to do this half term, eg a production and prom, in a slightly different way. For example, we are looking at a way to produce a film or a 'bubble' production instead of the usual production.

As our children understand the social distancing guidelines, we also want to find opportunities for the children to see all their classmates.

The children will be completing exactly the same learning challenges at school as they would do at home. Feedback will be given to children through ClassDojo and we are hoping to upload learning from the focus task table so parents will continue to see some outcomes.



What will Year 6's timetable look like?

Year 6

	8:30-9:30	9:30-10:00	10:00- 10:30	10:30-11:20	11:20-12:20	12:20-13:00	13:00-13:30	13:30-14:30	14:30-15:00
A	Learning 1	Break (outside)	Mindfulness/ Wellbeing	Learning 2 (with outdoor)	PHYSICAL ACTIVITY (field A)	Eat in classroom	Play out	Learning 3	Reading/end of day
D	Learning 1	Break (outside)	Mindfulness/ Wellbeing	Learning 2 (with outdoor)	PHYSICAL ACTIVITY (field B)	Eat in classroom	Play out	Learning 3	Reading/end of day
B	Learning 1	Mindfulness/ wellbeing	Break (outside)	Learning 2	Learning 3 (with outdoor)	play out	Eat in classroom	PHYSICAL ACTIVITY (field A)	Reading/end of day
C	Learning 1	Mindfulness/ wellbeing	Break (outside)	Learning 2	Learning 3 (with outdoor)	Play out	Eat in classroom	PHYSICAL ACTIVITY (field B)	Reading/end of day

For inquiries, comments, and suggestions

Outdoor space for KWA/B

KWA

KWB

Outdoor space for KWC + field

Indoor space in the KWC

Toilets

G001, G002, G003, G004, G005, G006A, G007A, G008A, G009A, G010A, G011A, G012A, G013A, G014A, G015A, G016A, G017A, G018A, G019A, G020A, G021A, G022A, G023A, G024A, G025A, G026A, G027A, G028A, G029A, G030A, G031A, G032A, G033A, G034A, G035A, G036A, G037A, G038A, G039A, G040A, G041A, G042A, G042B, E01, C01, C02, C03, C04, C05

For inquiries, comments, and suggestions

What will Our Key Worker children's timetable look like?

Key Workers

	9:00-10:00	10:00-10:30	10:30-11:20	11:20-11:50	11:50-12:30	12:30-13:00	13:00-13:30	13:30-14:30	14:30-15:00	15:00-15:30
A	Learning 1	Break	Physical activity (field B)	Mindfulness	Learning 2 (outdoor)	Eat	Break	Learning 3	Field B Physical activity	Story /reading
B	Physical Activity (field D)	Mindfulness	Learning 1	Break	Learning 2	Eat	Break	Learning 3 (outdoor)	Field D Physical activity	Story /reading
C	Learning 1	Break	Physical Activity (Field A)	Mindfulness	Learning 2 (outdoor)	Break	Eat	Learning 3	Field A Physical Activity	Story /reading

Do you have any other questions?

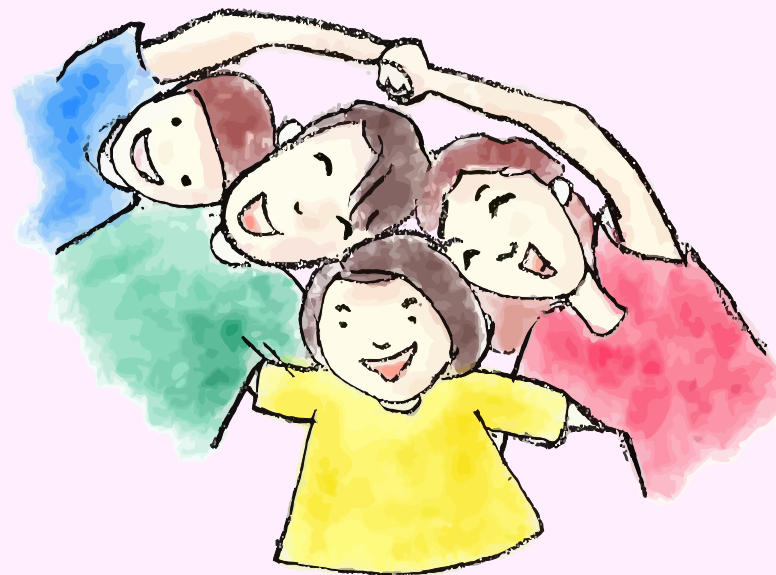


The children are not expected to wear school uniform as we ask that the children wear clean clothes each day. We would like the children to wear trainers or outdoor footwear appropriate for playing on the field. The children will not change into PE kits.



Child minders

If you are a child minder with multiple children being dropped off, please ring the school office so we can support you to bring the children in.

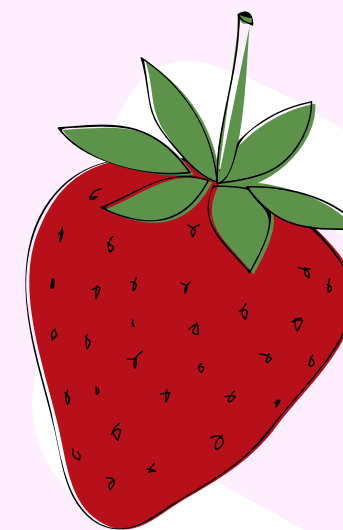


Unfortunately, following the guidance from the Government, we cannot offer before school and after school provision. Gatley is lucky to have a range of providers which you should be able to use to support your childcare needs.



Snacks

Children in KS1 and Early years usually receive fruit from the government. This is currently not being delivered, so children are welcome to bring in a snack from home to have at break.



They are also allowed to bring hand sanitiser if you want them to use their own rather than schools. School's sanitiser, as well as soap and water, will be available at all times and children will be expected to use them regularly.