

Name: _____ Tutor Group _____

George Mitchell School



Year 9 Homework Booklet Autumn Term 1

Secondary Equipment List

- School bag
- Pencil case
- Blue, black, green and **purple** biro
- Scientific Calculator
- Pencil
- Rubber
- Ruler
- Highlighters
- Glue stick

Contents

Computing	Page 3
English	To be set separately
Geography	Page 4
History	Page 5
Maths	Page 6
French	Page 7
Science	Page 8
<i>RE and Arts – homework is set every other week</i>	
RE	Pages 9
Art	Pages 10-11
Drama	Page 12
Music	Page 13
<i>DT subjects are taught on rotation. Only complete homework for the subject taught currently.</i>	
DT	Page 14
Textiles	Pages 15-16

Computing

Students are to complete homework set for the topics below (they can use the information on below to help them) which will be available on Google Classroom.

Week No	Homework set	Due Date (Week Beginning)	Parental Signature
Week 1	Online Safety (Complete quiz on online safety)	8 th September 2025	
Week 2	Social Media (Complete quiz on using social media)	15 th September 2025	
Week 3	Computer Networks (Complete quiz on computer networks)	22 nd September 2025	
Week 4	Wired and Wireless networks (Complete quiz on wired and wireless networks)	29 th September 2025	
Week 5	Network Configurations (Complete quiz on network configurations)	6 th October 2025	
Week 6	Network Security (Complete quiz on the types of network security)	13 th October 2025	

Advantages of Computer Networks:

- Sharing of hardware across devices (e.g. printers)
- Sharing of data and files across devices
- Monitor users and what they are doing on the network
- Centralised backup of data (in case of loss/breach)
- Users can access their data by logging into any machine

Disadvantages of Computer Networks:

- More prone to hacking and security breaches
- Network can slow down when traffic is heavy
- Increases installation/cabling costs and also costly to maintain
- Reliance on server (if server fails, no access to data)
- Malware can spread across the network if one device is affected

Network Configurations

A Network can be configured in three main ways:

PAN (Personal Area Network) – a personal network connection centered around ONE person (e.g. using Bluetooth) – the most secure form of network as no one else can access

LAN (Local Area Network) – covers a small geographical location on a single site e.g. school, office, shop, home and can be connected either by wired (using Ethernet) or wireless (using WiFi) connections

WAN (Wide Area Network) - connects multiple LANs spread across multiple/large geographical locations e.g. /country/offices in multiple countries



Network Security

There are 4 types of network security:

Firewalls: monitor the incoming and outgoing network traffic and decides to allow/block connections based on security rules.

Authentication: verifies the identity of the user accessing a network to prevent unauthorised access

Encryption: changing the way data looks, so only the sender and receiver can see the data (and unauthorised users will not be able to access)

Remember: All of these work together to provide greater levels of security

Year 9 Autumn Term 1 Computer Networks

Wired vs Wireless Networks comparison (Ethernet vs WiFi and Bluetooth)

Wired: much more reliable, faster and stable connection (not affected by interference) and also less like to be affected by hacking. However, wired connections affect portability/movement and are cost more to add additional devices.

Wireless: easier to connect more devices, can move around and costs less vs wired. However, more devices means affected by interference, it is not as fast or stable as a wired (Ethernet) connection and is more prone to be affected by hacking.

STAR Topology - all the devices are connected to a central switch or server that controls the network.



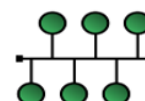
Advantages:

If one device or cable fails, the rest of the network will not be affected. Easier and simpler to add more devices (just connect to central). Limited or no data collisions as devices have independent connections

Disadvantages:

If wired, then each device requires separate cable/wire so can be expensive with many devices. If the main server/switch fails then the entire network will fail (unable to access any data). Additional cabling required for every device

BUS Topology – all the devices connect to ONE main cable, which has terminators at the end (to stop data from going back across the cable).



Advantages:

Easier to connect the nodes/devices to each other, less cabling required so it's cheaper to install

Disadvantages:

If the main cable fails/is damaged, the whole network fails, and there are more data collisions on this network due to following similar routes

Geography

Week	Task	Resources	Date Due and Parental Signature
1	Exploring key concepts Research the key concepts and write the definitions into your glossary	List of key concepts Geography book	
2	Evidence of climate change in the UK Watch the video (watched in class) and answer the questions on the evidence of climate change	Google classroom quiz	
3	The causes of climate change Complete the Google classrooms quiz to decide whether the different factors are human or natural causes of climate change.	Google classroom quiz	
4	Impacts of Climate Change Go through the impacts of climate change and categorise them into regional, national or global impacts	Google classroom/ online resource worksheet	
5	The drowning island of Kiribati Read through the guided reading and complete the Google classrooms quiz	Google classroom	
6	Solving the problem of Climate Change Complete the Google classrooms quiz on the most effective ways to reduce the impacts of climate change	Google classroom	
7	Planning for Climate Change Report Complete the planning worksheet, add extra research ready to write the report next lesson	Planning sheet	

History

Week	Homework	Due Date and Parental Signature
Week 1	Write one paragraph to summarise the rivalries between European countries which led to WW1. Use your class work and the slides on google classrooms to help complete this work.	Due date Signature
Week 2	Read the handout about Background to WW1. Write a paragraph to explain why the Franco-Prussian war was a long-term cause of WWI.	Due date Signature
Week 3	Use the diagram you have completed in class and the additional reading to answer questions about the development of the Alliances across Europe before WWI	Due date Signature
Week 4	Write a paragraph to summarise each of the four MAIN causes of WWI – Militarism, Alliances, Imperialism and Nationalism. Use the handout provided in class and BBC bitesize.	Due date Signature
Week 5	Reda the handout about the assassination of Franz Ferdinand – create a five-question quiz with answers about the assassination of Franz Ferdinand.	Due date Signature
Week 6	Revise for Assessment – Knowledge test.	Due date Signature
Week 7	Complete your causes of WWI Checklist.	Due date Signature

Maths

Mathematics homework will be set each week.

It will take 30 minutes to complete. The due date will always be Monday.

The homework will reflect what has been taught recently and include some recollection of older topics.

We use 2 websites www.mymaths.co.uk and www.mathswatch.co.uk for homework.

All homework set will be posted on to **Google classroom**.

1. How to access

www.MathsWatch.co.uk

your child should use their
Google Classroom
Username and password.



2. How to access www.MyMaths.co.uk

Go to www.mymaths.co.uk and log in at the top of the screen using your school username and password. On the next screen enter your personal username and password in the My Portal box.

Your login details

School username: gmittchell
School password: prime

My portal username: XXXXX
My portal password: XXXXX

Completing your homework

You can see tasks your teacher has set in the Homework area. If you click on one of the tasks, you will have the option to revise from the lesson first or go straight to the homework.

Each homework has 2 pages of questions. You must press the **Mark it** button on both pages to complete the task.

If you want to save your work to complete later, you can press the **Save** button. This will save your work for 2 weeks.

You can try each task as many times as you like. Only your best score for each page of questions will be recorded. Your teacher will be able to see how well you did and when you completed the task.

You can see your completed tasks and how you're getting on in the **Results** area. You can also tell your teacher what you thought of each task by giving it a **Rating**.

French

French homework will be set weekly.

It will be checked every Monday.

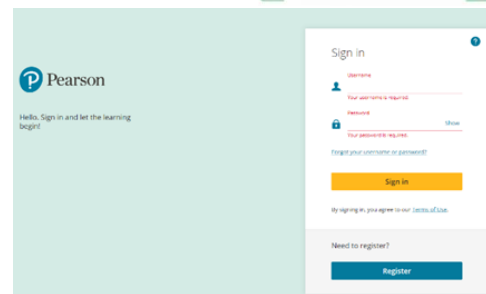
You will use the Active Learning Website to complete your homework.

1. How to access:

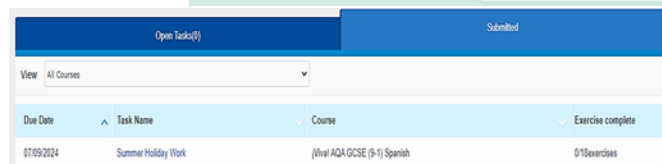
Step 1: Type “Activelearn” into google. or scan the QR Code



Step 2. Log in with the user name and password that your teacher has given you.



Step 3. Complete all the task set for you.



- You will see a variety of tasks, you will have **Reading, listening, vocabulary and grammar** tasks that will need to be completed.
- Once you have completed a task click on the **Submit** button.
- If you didn't have time to complete a task you can **save and complete later**.
- The program will give a percentage of how well you did in the task e.g. 70% correct so you have an idea on how well you are doing.
- If you would like to do more practice you have access to all the units in the sections of **Library**.

Science

This half term you will learn about:

- Cells
- Atoms
- Energy

Each week you will be assigned set a science homework on Google Classroom. This will be either:

- Tasks to do on the Seneca homework
- Revision to do before an end-of-topic test
- Reading a science-in-the-news article and answering a short quiz in Google Classroom

Seneca homework

- This can be completed on a smartphone, laptop or PC.
- Go to <https://app.senecalearning.com/login> or use QR code ->
 - Username = your school email address.
 - Initial password = seneca2020
- If you have problems, make sure you approach your teacher outside of lessons BEFORE the deadline!



Revising for an end-of-topic test

- Complete the SLOP (shed loads of practice) booklet that you started in your science lesson.
- If you are struggling and don't understand a topic, you can:
 - Type in the topic and "revision monkey KS3" into YouTube to find a video to watch.
 - Type in the topic and "BBC bitesize KS3" to find revision notes and videos.



Science in the news

"Bacteria give some cheeses their distinct flavours"

- Your teacher will set this homework task after you've learnt about living cells.
- Read the article here: <https://www.snexplores.org/article/bacteria-cheese-distinct-flavors> or use this QR code above to access it.
- Complete the quiz that was set on google classroom as part of the homework assignment.

RE

This half term you have to complete all tasks below. You need to hand in your homework to your teacher by deadline dates stated. If you have any difficulties with your chosen task please speak to your teacher well before the deadline. You should spend around 1 hour on the task– it should be a great example of your best work.

Y9 - HT1	Homework set	Due Date	Parental signature
<p>Task 1: Radical Actions – Create a Newspaper Headline and Subheading</p>	<p>Imagine you are a journalist living at the time of Jesus. Write:</p> <p>A newspaper headline (one line) about one of Jesus’s radical actions or teachings (e.g., “Jesus Challenges Religious Leaders!”).</p> <p>A subheading (2-3 sentences) summarizing what made this action or teaching surprising or controversial.</p> <p>At the bottom, write one sentence explaining why people might have found this radical or difficult to accept.</p>		
<p>Task 2: Letter from a Follower</p>	<p>Write a letter (about 100 words) from the perspective of one of Jesus’s followers explaining:</p> <p>Why they believe Jesus was radical.</p> <p>How his teachings or actions affected their life.</p> <p>What they would want others today to learn from Jesus.</p>		
<p>Task 3 – Revision</p>	<p>Create an A4 sheet of notes to help you in your upcoming RE assessment.</p> <p>You the following to support you –</p> <ul style="list-style-type: none"> • Your exercise book • BBC Bitesize 		

Art

Art Homework Project

Pop Art



Learning Objectives

- To understand the Pop Art movement
- To be able to identify Pop Art artworks
- To develop and create a Pop Art artwork

Key Words

Pop Art
Popular Culture
Lichtenstein
Warhol
Johns

● Step 1 - Practical - Deadline - Parental Signature _____

Use the internet to find some examples of famous Pop Art artworks. **Use the Converse template to produce your own trainer design based on one of the artworks that you have found.** Be as creative as you like! If you cannot print the template out you can either draw a trainer to decorate yourself, complete the sheet digitally or ask Mr Alexander to print it for you.

● Step 2 - Investigation - Parental Signature _____

Investigate the work of either Roy Lichtenstein, Jasper Johns or Andy Warhol. Try to find a range of images in which they use popular culture and imagery. There are some examples on page 2 but try to find some of your own too.

● Step 3 - Practical Research - Parental Signature _____

Draw and colour a copy of one of the images that you found for the step above. You can use any materials that you like. The image should be no smaller than A5 (half an A4 sheet).

● Step 4 - Main Practical - Deadline - Parental Signature _____

This is the most important part of the homework project as you are combining your knowledge and research with your own creativity.

Create your own image which uses popular culture as its focus. Use the internet to investigate modern popular culture and chose an area that you are interested in eg. celebrities, commercial brands, movies etc. You can use any materials that you like or have access to. Make sure that you use your materials in an accurate and controlled manner. Your image should be no smaller than A4 sized, you can collect paper and equipment from me if you need to.

● Extension Task - Written - Deadline - Parental Signature _____

Lichtenstein, Johns and Warhol were part of the Pop Art movement. **Answer the following questions in sentences.**

- When did the Pop Art movement happen?
- What Were the aims of the Pop Art movement?
- Find four other important Pop Art artists and write a brief paragraph about each of them. You could include when they were born, when they died and where they were from among other things.

Art

Art Homework Project

Pop Art



● Step 1 - Mastery Examples



● Step 2 - Examples of the work of Warhol (left), Johns (centre) & Lichtenstein (right)



●● Step 3 and 4 - Mastery Expectations

This is your Final Piece of artwork, in order to achieve mastery for this project you will need to meet the following criteria:

- Choose the subject of your image with real consideration. Make sure that it is something that you really like, care about or have an emotional response to.
- Sketch out your image lightly at first so that you can assess the overall composition and ensure that it is placed well on the page
- Draw the image with accuracy and control. If you notice an error or inaccuracy, correct it.
- Consider the materials that you are going to use to add colour with carefully. Do not rush your application of colour, it is arguably the hardest part of the image.
- Make sure you consider how you use tone alongside colour. This helps to create the illusion of light and dark and therefore three-dimensions. Tone can be achieved with colour mixing with paint or with pressure and blending with pencils.
- Add or refine any fine details after you have finished colouring. Sometimes drawings can get lost under colour and may need to be brought back out of the image.

● Extension Task - Mastery Expectations

The most important part of this aspect of the project is to show that you have deepened your knowledge and understand some of the ideas behind the artworks that you have studied and created. It is important that you research well, write in your own words using full sentences and proper grammar. If you use any quotes make sure you credit the author.

'It does not matter how slowly you go so long as you do not stop.' (Andy Warhol)

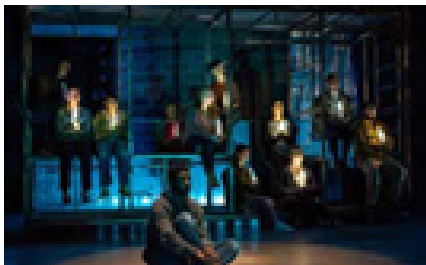
Drama

Refugee Boy

Completion Deadline 12th December 2025

Learning objective:

To be able to develop ideas for a set design for *Refugee Boy*.



Step 1:

Choose one of the images. Explain how it could help to create the atmosphere of *Refugee Boy* and why you think it could be effective.

Step 2:

Choose the image that you think would be the least effective in creating the atmosphere of the play. Explain the reasons for your choice.

Step 3:

Choose one of the images where you think colour is used effectively. Explain the reasons for your choice.

Step 4:

Design a set for a contemporary production of *Refugee Boy*. Explain your choice of set and props and your use of colour and fabric. Explain how your design will convey the themes of the play to an audience.

Congratulations on completing

Signed

Date

Music

Ballad: Year 9

Learning objective:

To demonstrate an understanding of ballads and its characteristics
To demonstrate an understanding of basic notation and chord theory

Step 1: Deadline: _____ Parent Signature _____

Log onto google classroom and open the 'Ballads' quiz assignment

1. Read through the Ballad knowledge organizer
2. Answer the questions in the Ballad quiz
3. Press submit, then view your score and look at your marked quiz to check understanding

Step 2: Deadline: _____ Parent Signature _____

Log onto google classroom and open the 'Listening quiz: Ballad' assignment

1. Watch the video of Taylor performing 'Love Story.'
2. Answer the questions in the quiz
3. Press submit, then view your score and look at your marked quiz to check understanding

Step 3: Deadline: _____ Parent Signature _____

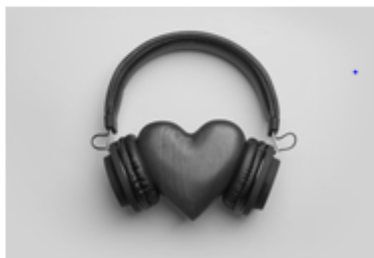
Log onto google classroom and open the 'Ballad theory quiz' assignment

1. Look through the theory chart attached to the quiz
2. Answer the questions in the quiz
3. Press submit, then view your score and look at your marked quiz to check understanding

Extension: Deadline: _____ Parent Signature _____

Log onto google classroom and open the 'Shared piano' assignment

1. Follow the link to shared piano within the assignment
2. Practise playing the tune we are working on in class (music notes attached to assignment)
3. Once finished press save and send the link of your playing back to me and press 'turn in'



Design Technology

Metals-Bottle Opener Project: working characteristics

The main aim of this unit is to develop pupils' understanding of the properties of materials and how to apply this understanding when designing and making.

Week	Homework	Due Date and Parent Signature
Week 1	L1: Metal audit of home (name, item, use, location and type) L2: User profile (needs and wants)	Due date Signature
Week 2	L3: Existing product analysis (openers: tin, bottle or multi) L4: Mood board – based on identified design movement (class vote)	Due date Signature
Week 3	L5/6: Flipped learning- Google sketch-up app, getting to know and use 3D modelling application	Due date Signature
Week 4	L7: Final 3d modelled Image of own product L8: produce a step by step plan of manufacture	Due date Signature
Week 5	L10: Flipped learning extended writing- Identify designer/inventor, discuss- talk about their work reason for selection and conclusion (500 words – 3 images) L9: Metal joining method worksheet	Due date Signature
Week 6	L11: materials and equipment literacy worksheet L12: Knowledge review revision for test	Due date Signature
Week 7	L13: Evaluation of completed product	Due date Signature

Textiles

This selection of homework supports your learning journey for the Teenage tote bag project. Homework tasks must be completed every other week in preparation for the upcoming lesson. All support resources are accessible via Google classroom.

Week	Task	Due Date and Parent Signature
Week 1	<p>Client Profile Create a client profile page based on who your tote bag will be for. You must include all information listed on the support sheet uploaded onto GC.</p>	<p>Due date Signature</p>
Week 3	<p>Mood board Create a mood board based on your chosen theme. Include images of work from artists discussed during the lesson, and any other relevant movements. (Themes relating to your client, and teenage life, rebellion, opportunity, empowerment, anxiety, freedom etc.) Bring this into your next lesson as these images will be used to help you design your finished product.</p>	<p>Due date Signature</p>
Week 5	<p>Designer research: Research a British fashion designer or textiles artist of your choice, find someone related to your concept where possible. Challenge: Find a designer that is unique, up and coming, or not as popular as the commonly referred to generic designers. Review the Power point on google classroom for support. This will be used for a collaborative design task in lesson.</p>	<p>Support PPT attached on Google classroom Due date Signature</p>

Textiles

Week	Task	Due Date and Parent Signature
Week 7	<p>Sewing machine refresher</p> <p>Review your knowledge of the sewing machine. We will be using this machine during your practical lessons.</p> <p>You must understand how it operates and the names of the different parts of the machine. Have a look on Google for information and use the links and videos attached for support. In your next lesson your knowledge on this will be tested.</p>	<p>Due date</p> <p>Signature</p>
Week 9	<p>Revision</p> <p>Revise content on:</p> <ul style="list-style-type: none"> • Design brief • Sustainability, environmental impact of fashion and textile production. • Natural and manmade fabrics, their sources, properties and uses. • How fabric is made. • The parts of the sewing machine. • The design process. • Health and Safety within Textiles. • Revise all theory covered in DT and Food Technology. 	<p>Due date</p> <p>Signature</p>
Week 11	<p>Product analysis</p> <p>Complete an analysis of your product. Use ACCESS FM to break down each element of your product. Use the attached resource to support you.</p>	<p>Due date</p> <p>Signature</p>