



WELCOME TO GORSE HILL SCHOOL NURSERY

2022-2023

EVERY
CHILD
CAN

Contents

	PAGE
Welcome to Gorse Hill Primary Nursery	3
Nursery Session Timings	4
Classroom Learning	4
Outside Learning	4
Assessment	5
School Uniform	5
General School Information	6
Our School CARE Values	7
Attendance and Holiday During Term Time	8
Safeguarding	9
Pastoral Care	10
Contact Information	11

WELCOME TO GORSE HILL PRIMARY NURSERY

On behalf of all the children and staff at Gorse Hill Primary Nursery, we would like to offer you and your child a warm welcome.

Our goal is for all our children to have a happy and enjoyable start to nursery in order to build successful foundations for their learning. We value building a strong and close partnership with you as parents throughout your child's learning journey with us at Gorse Hill Primary Nursery.

The aim of this booklet is to provide you with practical information and advice to help your child start nursery.

If you have any questions or concerns, please do not hesitate to contact us.

Phone: **01793 523 800**

Email: **office@gorsehill.swindon.sch.uk**

Gorse Hill School
Avening Street, Gorse Hill, SN2 8BZ

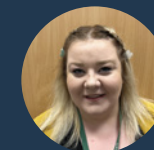
Gorse Hill Primary Nursery Staff



Luke Graham
Principal



Amy Edwards
Assistant Principal
(EYFS & KS1)



Miss Long
Room Lead



Mrs Burgess
Nursery Staff



Mrs Neil
Early Years Practitioners



Miss Nightingale
Early Years Practitioners



Miss Henderson
Nursery Staff



NURSERY SESSION TIMINGS

AM SESSIONS

Nursery starts at 8:30am

Nursery finishes at 11.30am

PM SESSIONS

Nursery starts at 12:30pm

Nursery finishes at 3.30pm

30 HOURS CHILDREN

Nursery starts at 8.30am

Nursery finishes at 3.30pm

Please let us know if someone else is collecting your child. You will need to let the class teacher know at the beginning of the session or ring the school office.

If we have spaces available, we can offer additional wrap around care at lunchtime and extra sessions. There will be a charge for any additional care required. Please contact a member of the school office who will be able to discuss options with you.

CLASSROOM LEARNING

Every child who attends our nursery will have the opportunity to engage in a variety of child-initiated, adult initiated and adult focused activities throughout the week. Children have access to a wide range of high-quality resources and activities that are carefully designed to engage, challenge and develop children's learning in all areas of the Early Years Foundation Stage.

OUTSIDE LEARNING

Outdoor learning has a positive impact on children's well-being and development. Therefore, within our Nursery we maximise children's opportunities to learn and explore outside, regardless of the weather. As with classroom learning, children have the opportunity to engage in outside learning through a variety of child-initiated opportunities and adult led activities.

WHAT DOES MY CHILD NEED TO BRING TO NURSERY?

- **Named water bottle**
- **Small backpack with a set of spare underwear and clothing inside**
- **Named wellies**
- **Named waterproof coat**
- **Gorse Hill School blue bookbag**

ASSESSMENT

At Gorse Hill School we use Tapestry, Online Learning Journal to record your child's learning.

You will be issued with your own login details for Tapestry so that you can access your child's individual learning journal online. These logins will be given to you before your child starts Nursery.

You can use Tapestry on a computer or on a mobile phone



SCHOOL UNIFORM

Although children in nursery do not have to wear school uniform, we do encourage them to. This helps children to feel a sense of belonging.

School sweatshirts, cardigans and T-shirts with a logo may be purchased from our school website:
<https://gorsehill.swindon.sch.uk/information-for-parents/school-uniforms>

- ✓ Blue Gorse Hill School jumper/cardigan
- ✓ Blue Gorse Hill Nursery T-shirt
- ✓ Blue Gorse Hill School book bag



GENERAL NURSERY INFORMATION

PAYMENTS INTO SCHOOL

We use an online payment system for the majority of payments into school. **Once your child has started you will be given your logon for Parent Pay.** It is an app that can be installed on a PC, phone or iPad.

There is a charge to the 30hrs pupils for the nursery lunchtime supervision.

There is a daily cost of £3.00 to cover the supervision of your child at lunchtime. Total cost for the week is £15.00, payments are made on ParentPay.

LUNCHTIMES

Those children that attend Nursery for 30hours may stay for lunch. School meals need to be ordered a week in advance through Parent Pay. You may prefer your child to bring a packed lunch.

MILK

All children in Nursery will have the option of milk or water during snack time.

SNACKS

We have a morning snack and an afternoon snack at Nursery. We have a variety of healthy options which is mainly fruit. There is a small charge for Nursery snack and this is payable through ParentPay.

TOILET TRAINING

We encourage all children to be toilet trained before starting Nursery. If your child is still in nappies, we will support you by helping you to toilet train your child.

OUR SCHOOL CARE VALUES

All members of our school community are encouraged to be the best version of themselves, all of the time, and this ethos is underpinned by our CARE values: Courage, Appreciation, Respect, Responsibility and Excellence, which encourage our community to take care of ourselves, others and the world we live in. Our core values enable our pupils to grow into responsible, independent and considerate citizens.

C

WE SHOW COURAGE WHEN FACED WITH A CHALLENGE

A

WE SHOW APPRECIATION FOR THE RIGHTS, FAITHS AND BELIEFS OF OTHERS

R

WE RESPECT AND TAKE RESPONSIBILITY FOR OURSELVES, EACH OTHER AND OUR ENVIRONMENT

E

WE AIM FOR EXCELLENCE THROUGH HAVING HIGH EXPECTATIONS

OUR HOUSE SYSTEM

Every child who attends our school is part of a House Team. Our House System is used to reward children, but is also an additional and important part of the school's pastoral support for our pupils. During the year, your child will meet with other children from across the school in House meetings and compete in House events.

Our House Teams named after 'the elements' and are:

RED FIRE

YELLOW AIR

GREEN EARTH

BLUE WATER

Your child will remain in the same House Team throughout their time at Gorse Hill School. They will be required to wear their House colored t-shirt for House events and for PE.

ATTENDANCE AND HOLIDAY DURING TERM TIME

ATTENDANCE, PUNCTUALITY AND ABSENCES

We aim for all children to attend Nursery everyday. If your child is poorly, we do ask that you let us know by 8.20am by ringing the school **01793 523 800** and leaving a message.

HOLIDAYS IN TERM TIME

We encourage families not to take holidays during term time. The White Horse Federation policy on holidays is available on TWHF website.

SCHOOP

Schoop is an app that we use to contact parents with information, e.g. to let you know of activities taking place in school.

Our school Schoop ID is 18533.



SAFEGUARDING

In order to ensure the safety of all children in our care, we are required to follow the Safeguarding Procedures as agreed by the Local Education Authority. We will endeavour to share with parents/guardians any concerns we may have regarding any injuries noted or other specific issues regarding the welfare of their child. We will keep a record of any concerns raised and will share them with the parents/guardians if it is appropriate to do so. We do have a duty to refer to M.A.S.H. (Multi-Agency Safeguarding Hub) if we suspect a child is at risk of significant harm. If we make a referral to M.A.S.H. we will inform the parents/guardians concerned; unless to do so would place the child at increased risk of significant harm.

Our first concern will always be the welfare of the child.

We have a copy of our school's Safeguarding Procedures and Guidance in the office if you wish to see it.



Luke Graham
Designated
Safeguarding Lead



Rebecca Thompson
Deputy Designated
Safeguarding Lead



Ros Ginger
Deputy Designated
Safeguarding Lead



Louise Francis
Deputy Designated
Safeguarding Lead



Amy Edwards
Deputy Designated
Safeguarding Lead



Ian Cooke
Safeguarding
Governor

PASTORAL CARE

At Gorse Hill Primary School, we have an experienced pastoral team who support children with learning behaviours, social and emotional difficulties, self esteem and friendship worries.



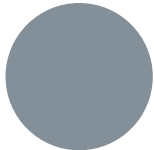
Rebecca Thompson
SENCo



Ros Ginger
Inclusion Manager



Mrs Jordan
Learning Mentor



Mrs Simms
Learning Mentor

Mrs Thompson manages our SEND provision and provides support and advice to both parents and teaching staff around all issues of inclusion and attendance.

Mrs Jordan and Mrs Simms are our learning mentors. They support with individual children and groups of children in the classrooms.

CONTACT INFORMATION

If you have any questions, please contact Mrs Rouse or Mrs Burton in the school office. Contact details are outlined below:

School: **01793 523 800**

Email: **office@gorsehill.swindon.sch.uk**

Website: **<https://gorsehill.swindon.sch.uk>**

We are very proud of our website and regularly update it to keep you informed of all the great activities that go on in school.

Please visit our website to find out about what goes on in other areas of school life. All school and class newsletters along with class timetables are also posted on the website.

We hope that you have found this booklet informative. If you have any further questions, please feel free to contact us in school.

We look forward to your child joining our school and developing a long and supportive partnership with you.





WELCOME TO GORSE HILL SCHOOL NURSERY

2022-2023

EVERY
CHILD
CAN