

Intent: What do we want children to learn?

PSHE and values education are at the heart of our school ethos and broad and balanced curriculum. Our aim is to develop the whole child intellectually, morally, socially and spiritually in order to nurture rounded individuals with a strong sense of moral understanding and responsibility.

As a values-based school learning is inspired by our five core values: **resilience, bravery, support, aspiration** and **reflection**.

We ensure the children are taught about and learn to apply the main British values in all they do.

These are: democracy, the rule of law, individual liberty, mutual respect and tolerance of those with different faiths and beliefs.

We endeavour to prepare pupils at the school for the opportunities, responsibilities and experiences they will meet in later life in a way which recognises and respects diversity, inclusion and wider social issues.

PSHE in a Nutshell



Grange Junior School

Impact: On leaving Grange Junior School children will have developed:

Their spiritual, moral, social, cultural, mental and physical development.

Their academic potential and will leave school equipped with skills they will need throughout later life.

Their understanding of how to keep themselves safe.

Pupil voice is key to the success of our school. We ensure children are heard and that their ideas and views are listened to. We also ensure that children are given key responsibilities within the school community.

Implementation: How do we do it at Grange Juniors?

The spine of our curriculum is based on the Jigsaw scheme of work which was updated to meet the DfE statutory guidance for Health education, relationships education and RSE. PSHE is taught weekly as a class.

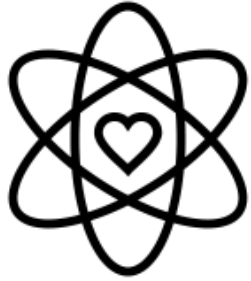
This scheme follows the key themes of:

- Being Me in My World (including Black History Month)
- Celebrating Difference (including Antibullying)
- Dreams and Goals
- Healthy Me
- Relationships (including Sex Education)
- Changing Me

The above themes and curriculum are further enriched through Picture News, assemblies, visitors to the school, workshops and the celebration and learning linked to key awareness days/weeks.

Our approach to PSHE results in the development of children's values in order for them to become positive citizens in an ever-changing community. We ensure that through a rich curriculum that relates to their own lives and others around them, children can understand their own role at school and in society. Children develop a curiosity of the world around them and how they can impact this positively, leading to personal and social growth that incorporates a solid understanding of how to keep healthy and be responsible for ourselves and others.

Our Golden Threads in PSHE



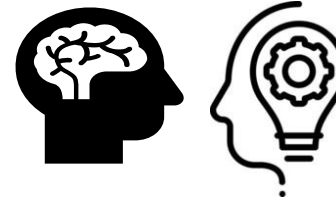
Values Rich



Vocabulary Rich



Connections Rich



Knowledge and Skills Rich



Active and Enriched

This subject supports our values by

This subject supports children's vocabulary use and acquisition by...

This subject let children make connections by

This subject provides children with knowledge and skills by

This subject allows for active and enriched learning by...

Allowing children to develop their emotional resilience which builds their capacity to learn.

Using key vocabulary specific to each year group that enables children to express themselves.

Linking skills and values to real life situations and making cross-curricular links to apply values in all subjects.

Using clear, sequenced lessons across all year groups to allow children to develop a wide range of academic and personal skills to prepare for later life.

Having active and engaging lessons where the children can explore and express their feelings within a safe and nurturing environment.

Encouraging bravery to share and discuss important current developments around the world.

Promoting resilience and aspiration when working towards achieving dreams and goals.