

Safeguarding & Child Protection

At Grange we are committed to safeguarding and promoting the welfare of our pupils. Contained in this leaflet is information about our child protection procedures

If we have any concerns regarding the wellbeing of a child at Grange School we will follow the guidance in our Child Protection and Safeguarding Policy which reflects current Government policy 'Keeping Children Safe In Education 2022'.

This may mean that a member of the school safeguarding team [DSL] will contact you to discuss your child. It may also be necessary to speak with other professionals to secure the best outcomes for your child.

At all times our priority will be keeping your child safe.

All adults at Grange school work together to safeguard, and promote the welfare of the pupils in our care. We aim to provide an environment where all pupils and adults feel safe, secure and listened to and where concerns raised by any member of our school community are always taken seriously.

We recognise that our pupils have complex communication difficulties which can increase their vulnerability, especially in social situations. Pupils at Grange School find it difficult to put words and ideas together to tell people if something has happened that has worried or frightened them. Some pupils may not know that they are at risk or have even experienced abuse.

In all instances staff at Grange School will maintain a high level of vigilance to safeguard pupils and will report any concerns.

Further information about Safeguarding and Child Protection at Grange School can be found on the school website: www.grange.manchester.sch.uk/about-us/key-policies

Safeguarding Team



Rachael Clifford

Head Teacher and Safeguarding Lead with whole school responsibility



Stuart Harris

Deputy head and Senior Designated Safeguarding Lead
s.harris@grange.manchester.sch.uk



Andy Richardson-Rafey

Deputy head & DSL



Kate Corbishley

Deputy head & DSL



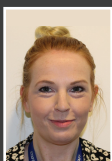
Georgia Paton

Deputy head & DSL



Jane Jones

Deputy head & DSL



Suzi Evans

Family Liaison Officer & DSL



Sophie Hewitt

Associate Assitant Head & DSL



Ollie Clark

Associate Assitant Head & DSL



Ollie Bellingham

PE Lead & DSL

At Grange School we are committed to a child-centred approach to safeguarding.

'Safeguarding and promoting the welfare of children is everyone's responsibility. Everyone who comes into contact with children and their families has a role to play. In order to fulfil this responsibility effectively, all practitioners should make sure their approach is child-centred. This means that they should consider, at all times, what is in the best interests of the child.'

(KCSIE 2023, Part 1, p 6)