

# What will you be doing for your exam in YR 7?

During these next few weeks, you will be focusing on your exam preparation. The focus of your exam will be

- Tone
- Composition.
- Scale.
- Quality.

Each box will be assessed to form your final targets. Every section of this task is important not just the final drawing.

## A03- Research



Glue in research images

Write your opinions about the work of Artist Sarah Graham.

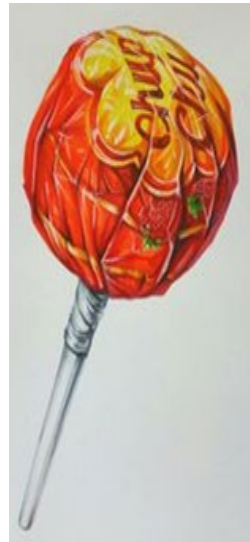
Draw your chosen image



## A01-Analysis.

I am pleased with my chosen composition for my final drawing. I have experimented with coloured pencils trying to blend different colours to show tone throughout the piece. I am pleased with the overall outcome but I feel that I will stick to pencil for my final piece as the colours within the photograph aren't that interesting or varied. I might use limited colour and using coloured pencil to add in the red areas on the controllers but I'm unsure how this will look.  
I am very happy with my final piece and I think I made the correct choice leaving the colour out of the drawing. I feel that I have managed to blend the tone well throughout the drawing.

## A02-Material and composition test



Experimenting with colour and materials

## A04-Final piece.



Final drawing done under exam conditions.

### Year 7 Assessment

Steps to Success	EBI
I can produce a drawing with a number of objects.	Add more drawings into the empty space. Add a range of different scale objects to your composition.
I can produce a drawing showing blended tone.	Focus on blending your tones so they change gradually (no big jumps). Layer and blend your colours to show tone.
I can produce a controlled drawing showing an interesting composition.	Focus on making your drawing neater. Focus on ensuring your drawings are more accurate/ in proportion.

Steps to success