



Big enough to offer choice,
small enough to care.



PROSPECTUS
2023



CONTENTS

- 4. Welcome to Barrow Hall College
- 6. Reasons to Choose BHC
- 8. Why We Chose BHC
- 9. The BHC Investment
- 10. Facilities at BHC
- 12. Support at BHC
- 14. Student Leadership
- 15. Executive Shadowing
- 16. International Students
- 17. Aspiring Professionals Programme
- 20. Destinations
- 21. High Achievers Programme
- 23. BHC Careers Training Zone Programme
- 24. BHC Pathways and Entry Requirements
- 25. Course Directory
- 55. How To Apply



01925 720726
greatsankey.org/college
Barrow Hall Lane, Great Sankey,
Warrington WA5 3AA



@BarrowHallColl



Welcome to Barrow Hall College



“Here at Barrow Hall College our staff are fully committed to ensuring every student reaches their full potential, leaving us at the end of year 13 as confident, well-rounded individuals. We will get to know you very well, learning your strengths alongside your goals and future ambitions and will do everything in our power to get you there.

Knowing you as an individual and how you learn best is key to your success and the relationships which exist between students and staff create a college community where each student is valued and can therefore flourish. At Barrow Hall College no student is just a number.

Choosing the right college and courses is a daunting task and we hope this prospectus, open evening itself and our other transition events will make the journey as smooth as possible for you. Our dedicated heads of year and experienced college tutors are here to guide you through the process and offer you all the information, advice and guidance you need to make an informed choice.

We are a college with high aspirations for our students and for ourselves, engaging with both student and parent feedback to continuously improve our provision and student outcomes. Only this year we have extended our Aspiring Professionals Programme, added a Careers Training Zone Programme and further expanded our staffing to include a college learning and safeguarding mentor.

I am exceptionally proud to be Head of Barrow Hall College and look forward to welcoming you as a student in September as we go from strength to strength.”

Helen Stones
Head of College



"The transition from high school to college can seem to be a daunting one. You need to consider so many different things before finally deciding on this important step. From my personal experience, I can assure you that Barrow Hall College will support you every step of the way, making sure the move to college is as smooth and easy as possible.

I have quickly come to recognise that if you choose to study here, you will experience the inclusive, fun atmosphere that we all enjoy. Everyone is so friendly and there is a mutual respect between students and teachers with a great Pastoral team to support you too.

The college promotes respect and diversity and represents all our students, doing everything possible to allow each student to realise their potential and help them achieve their goals. By studying here and embracing all that is on offer to you, not only will you achieve great things for yourself, but you will also feel part of something very special.

It is my pleasure to welcome to you Barrow Hall College for our open evening, and we hope to see you in September 2023 to continue your journey here with us and be part of our community."

Aylish – College President

"Barrow Hall College holds the core values of opportunity, dedication and unity while creating a supportive, comfortable and ambitious atmosphere.

My role as College President is to represent the student body by providing a voice to the students in addition to providing a warm and caring environment to all in an approachable, caring manner. I feel it is vital to embrace the empowering spirit we have here at Barrow Hall College and I firmly believe no other college is able to provide the togetherness Barrow Hall does.

It is an integral part of the college to encourage each student to involve themselves in the vast array of enrichment schemes and opportunities available. This also allows students to discover their potential by finding a passion for something they truly value.

Barrow Hall also plays a key part in providing you with the next steps of your journey like providing work experience opportunities to help decide on future careers or even gain invaluable knowledge which can be discussed in your personal statement. This is something I believe due to the closeness at Barrow Hall would not be provided by any other college."

Megan -College President

Reasons to Choose BHC

Proven track record

each year our students leave us with fantastic results and 95% secure their first choice or insurance university place or progress to employment or advanced apprenticeships.



Outstanding Pastoral Support

at BHC you are a name, not a number! We will get to know you as a person whilst providing the academic and pastoral support you need in order to be successful.

More Teaching

you will receive up to 5 hours of teaching per subject per week but will also benefit from a large number of study periods to manage your workload.



Small Class Sizes

we have an average class size of 12 students across the college. Our students benefit from more specialist subject support from their tutors than in larger FE colleges.

Broad Curriculum & Enrichment Opportunities

with a wide range of courses to choose from BHC will offer you a bespoke study programme on the academic pathway, vocational pathway or a mixed pathway. We invest in our students cultural capital by offering a range of opportunities to enrich your college experience and strengthen your future employability.



Student Leadership

our student leadership team are central to the success of the college. We have a team of ambassadors who are led by a talented College President. Student voice is very important to us and we pride ourselves in acting upon the suggestions made.

Location

the vast majority of our students are able to walk or cycle to college. Those who need to get public transport usually only have one short bus ride.



College Hours

the college day (8.20am-14.50pm) means that you will be able to balance your studies with other important aspects of life such as part time work, exercise or driving lessons. The early finish is particularly useful for our elite-athletes.

Facilities

we invested £8 million into our college building which houses our own facilities such as the cafe and social space, lecture and drama theatre, arts studio and LRC. We are particularly proud of our new and dedicated BHC science labs.



Careers

you will receive one to one and small group, individualised careers education, information, advice and guidance throughout your time at BHC using a dedicated online platform (Unifrog). This is the case no matter whether your post-18 aspirations are university, apprenticeship or employment bound.

Specialist 16-18 teachers and tutors

many of our teachers are examiners and senior examiners who mark and write for the exam boards. In addition, as a school based sixth form we understand how to help you make the transition from school to college life.



Family Environment

whilst many FE colleges offer support and guidance, at BHC we really will get to know you as an individual in a caring, community atmosphere.



Why We Chose BHC



I studied at The Liverpool Blue Coat school and moved to Barrow Hall College. The college offers a wide range of courses which I find provides access to many university courses. The classes at BHC are small which made me feel that I am receiving quality teaching rather than being lost within a large group of students. The teachers are very approachable and have made the start of year 12 smooth and welcoming. I would highly recommend attending BHC whether you come from Great Sankey High or any other school.
- Miriam, Year 12

"I left GSHS for a FE college thinking at the time that I wanted a change from the school environment I had experienced for five years. I found that a lot of my time was wasted with an awkward timetable leaving me with hours of free time before a class at 3:30pm or that friends who had also left from GSHS were usually in lessons when I was not. Since coming back to BHC, I have reconnected with friends from school and really enjoyed my timetable and courses including the Sports Leader Award that I am completing as part of my enrichment."
- Ethan, studied BTEC Sport and Criminology

"I studied at Bridgewater High School and I am really enjoying Barrow Hall College. The college is really friendly, the class sizes are small and I have plenty of study time to complete my work when not in lessons. My lessons are really enjoyable and my teachers deliver the courses in an interesting way. I would highly recommend studying at BHC even if you are not currently a Great Sankey High School Student!"
- Lottie, studied Psychology, Sociology and Criminology

"I originally left Great Sankey to attend a local FE college to explore my options and I had also been enticed by a scholarship offer! However, I quickly found that I was in much larger class sizes alongside a disorganised timetable spending large parts of my day travelling back and forth (sometimes not returning until 6:00pm). My free bus pass also only covered one bus so I was spending my own money if I wanted to leave the site during the college day. I actually found it to be a nightmare! Since returning to BHC, I have enjoyed the smaller classes where you get to know staff well who are friendly and helpful. I also enjoy the environment of the college building which feels brighter and happier than a big FE college."
- Olivia, studied Creative Media, Photography and Performing Arts

I originally left GSHS for a large FE college as I thought I needed a change from being in school. However, I did not enjoy being in big classes of 34 where at A level you really do need that individual support from tutors. On returning to BHC, I have really enjoyed being in a friendly and more supportive learning environment. My class sizes are much smaller and I value the encouragement of my tutors whilst feeling a stronger sense of community that the sixth form at BHC provides.
- Ellie, Year 13



The BHC Investment

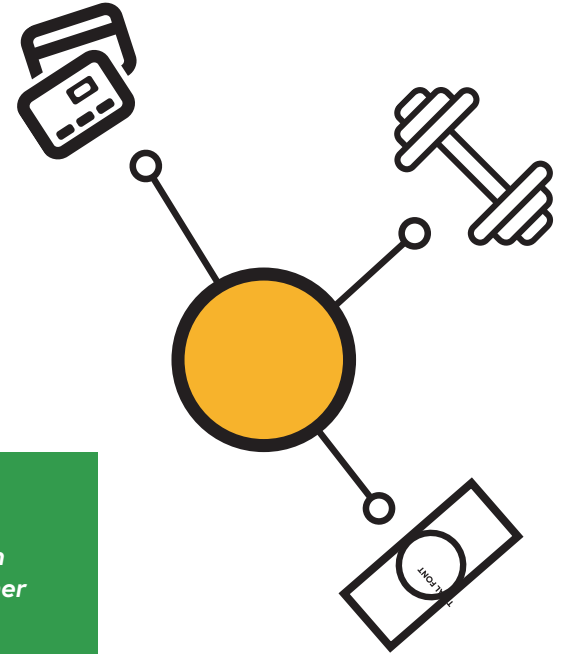
The BHC investment goes beyond the provision of high quality teaching. Our students benefit from:

- Free access to the gym at Livewire during college hours
- Free termly BHC excursions for our college ambassador team
- Financial contributions to bus passes
- Subject, community and sporting scholarships

*Terms and conditions apply

"Attending Barrow Hall College allows me to develop myself in other ways than just academically. This is because you have free access to the Great Sankey Neighbourhood Hub during your study periods. Having a break from college life to go to the gym is great and allows you to push yourself in other areas in your life."

Jack Year 13





Facilities at BHC

**Microsoft Office
365 for access to all
Microsoft software and
OneDrive storage**

**Dedicated sixth form
science labs**

**Art Studio - a
bright, open space to
encourage creativity
in our Art & Design
and Textiles courses**

**LRC - University of
Manchester library
links, silent study
area with PCs**



**New
Chromebooks
available for all
students and
refurbished IT
facilities**

**Sporting facilities -
Floodlit 4G Astro turf
pitch, tennis courts,
sports hall and gym
facilities**

**Specialist software
- for photography,
computing and
media courses**

**Performing Arts/
Lecture theatre - 100
seat theatre for lectures
and events, fitted with
theatre lighting and
sound equipment.
Performing arts space
for rehearsal and
performance**

**Cafe and social
area - available for
breakfast, lunch and
snacks with a cashless
payment system**

Support at BHC



We are very proud of the caring environment that exists at Barrow Hall College and believe it is one of many things that makes Barrow Hall College a special place to study. We have one central college office for all of your needs as a student at BHC. As well as a college manager, the office is the home of both Heads of Year and the Head of College.

We operate an open door policy and can provide a range of support services, whether this is just a brief chat, a counselling referral or support with university and careers advice.

Tutor Team & Post-18 Support

You will be linked to a college tutor group and where possible, be placed with a tutor who is a subject specialist in one of your chosen courses. If you fit the criteria as a high achieving student based on GCSE performance, you will be placed with a specialist tutor in charge of Russell Group/Oxbridge University applications.

The college tutor will be responsible for monitoring your attendance and progress during your two years at BHC. Your tutor is normally your first person to contact via email or in person if you are in need of support. Your college tutor will also deliver a comprehensive tutor programme in order to prepare you for your next steps after college whether this is university, apprenticeships or full time work. They lead the UCAS application process offering one to one personal statement

support sessions and providing expertly written references.

At Barrow Hall College, the tutor team is one of our greatest strengths, we will get to know you and you will get to know us. We also have an independent careers advisor based in the college who offers one to one sessions to explore your post-18 options.

Safeguarding

The college is committed to safeguarding and promoting the welfare of students and expects all staff to share this commitment. All college tutors receive comprehensive annual safeguarding update training. We also have a dedicated KS5 Learning and Safeguarding Mentor.

Equality & Diversity

We believe that everyone is important, has the right to be valued, treated with respect and supported throughout their college journey.

Academic Support

The college is committed to providing every student with the opportunity to reach their full potential. All students are assessed every half term within subject areas and progress is tracked and monitored by subject teachers, heads of department, college tutors and heads of year. Personalised intervention is put in place where necessary in order to tackle under-performance.

A summary of progress and attendance is sent home every term and students, parents and carers are invited to several events across the year. These include review days with tutors and progress evenings with subject departments. Departments also conduct progress reviews and support is available with regards to time management, study skills and revision techniques.

Students with Additional Needs

The college offers a supportive environment at post-16 through our pastoral systems and via our SEN co-ordinator Jen Edwards. We have a Mental Health & Wellbeing Mentor and Counsellor who offers a drop in service.

Support for examinations may also be available such as enlarged question papers, readers, extra time, scribes or laptops. If you do have additional support requirements, then please contact the college for further information.

Financial Support

The Government provides a 16-19 Bursary fund for students who experience problems continuing in education due to financial difficulties. The fund can support students with provisions such as travel or equipment for their courses.

The maximum bursary of £1200 a year will be paid to the most vulnerable students; in care, care leavers, young people in receipt of income support (or Universal Credit) and disabled young people in receipt of Disability Living Allowance. Other discretionary bursary payments are given to students based on individual circumstances. Please contact the college if you have any questions or require any further information.



Student Leadership

Our Student leadership team consists of a small group of incredibly, hardworking individuals with roles including President and Coordinators leading a team of ambassadors who specialise in four key areas; events, fundraising, outreach and student support.

The voice of the students is represented by the Student Council. This is led by the student leadership team, who meet with students regularly to discuss ideas and opportunities that will benefit the college. Students are instrumental in delivering change at BHC and we value the opinions and ideas of our student leadership team greatly. The student leadership team meet regularly then feedback to the Heads of Year before implementing any proposed changes, ideas or larger projects.



Executive Shadowing

All Year 12 students have the unique opportunity to take part in the Executive Shadowing / Internship Scheme. Students will spend 1-2 weeks shadowing employees in their chosen career paths.

We expect all students at BHC to secure an executive shadowing placement relevant to their higher education or career pathways. This important programme runs in the summer term and forms part of the many opportunities BHC gives students in terms of careers information, advice and guidance. Universities and employers value this and students in the past have shadowed architects, lawyers, doctors and site managers in the UK and abroad.



"I secured a week-long work placement along with 30 other students from across the country at Jaguar Land Rover in Halewood for my executive shadowing placement in the summer term of year 12.

During my placement, I experienced a multitude of visions the company was developing and was amazed at the variety of technologies, procedures and people in place to achieve these goals. To be honest, it felt a little surreal! As a team of 6, we were assigned an innovation project in which we explored a multitude of visions and ideas into an effective solution. We explored technologies present in their current fleet, including some of their prototype vehicles and had the opportunity to tour the painting side of the factory, learning how the process worked from start to finish.

We also viewed the assembly process and were able to witness how Jaguar ultimately end up with a product that provides a personalised feel to the customer. The factory plant was enormous with the sounds, sights and

sheer size of the machinery almost overwhelming.

Alongside these amazing experiences, we met teams of people with many specialisms across the company. I thoroughly enjoyed my placement and was able to learn and develop new skills of teamwork and practical skills during the week I was there. My experience confirmed my desire to work within the industry after graduation and one of my personal highlights was the opportunity to talk with a mechanical and software engineer. My UCAS personal statement has subsequently flourished and I am grateful for the support Barrow Hall College provided in securing my placement."

Abbas, Year 13, studying Mathematics, Further Mathematics, Physics and Computer Science with aspiration to study Engineering at University of Cambridge.

"I completed a two-week period of clinical work experience placements at both adult and child level. I spent one week on an adult surgical ward at Halton Hospital. During this week, I was trained in all aspects of care management in a day surgical ward setting. I was trained in the administration and practical processes of all elements, which included, transfer of patients to/from theatre, pre/post-surgery observations, handover and discharge processes. By the end of the week, I was given responsibility to carry out observations independently. My second week of experience was completed on a Neurosurgical & Orthopaedics ward, at Alder Hey Children's Hospital. This placement gave me an insight into the different elements of paediatric nursing care and I spent time with a number of specialists involved in childhood nursing. Following these contrasting experiences, my desire is to study adult nursing."

Emma, Year 13



International Students

Here at Barrow Hall College, we welcome international students and offer a comprehensive support package including Maths and English GCSE resits alongside the opportunity to study 3 level 3 KS5 subjects. We also offer a flexible 3-year programme of study, to ensure the individual needs of our international students are met, alongside bespoke support through our tutor programme and EAL support sessions where required.

Michael and Ryan are amongst a growing number of students who joined us from Hong Kong at the beginning of year 12. We are delighted with how they have settled into our college community and with the exceptional progress they have made.

"I have really enjoyed my A levels at Barrow Hall College. I decided to study four A level subjects of Biology, Chemistry, Maths and Physics and am applying to University to study Chemical Engineering with aspirations of becoming an Undergraduate student at Cambridge University. I have found the sixth form at Barrow Hall College to be friendly and welcoming, whilst providing high levels of academic teaching and support. I would definitely recommend Barrow Hall College to other students."

Michael, Year 13

"I am studying Maths, Further Maths and Computer Science with aspirations of studying Computer Science at undergraduate level. I have also found the college welcoming and supportive, particularly with the level of support on offer with the college's University programme and the standard of teaching has been incredibly high. I love mathematics and regularly attend morning Maths interventions with my A level teachers."

Ryan, Year 13



Aspiring Professionals Programme

At BHC we understand that it takes more than good grades to stand out from the crowd when applying for competitive university courses or aspiring to join highly competitive career industries. With this in mind we are committed to providing comprehensive subject specific enrichment opportunities and support packages.

For 2023 we are offering the following programmes:

Pre- Med/Vet Med

Future Doctors, Dentists and Vets are offered a great deal of support in ensuring that their applications stand out. This includes:

- Bespoke guidance in preparing UCAS personal statements
- Application support and participation in national programmes such as Nuffield research placement for 4-6 weeks in summer of year 12.
- Advice and guidance for the UK Clinical Aptitude Test (UKCAT) and the Biomedical Admissions Test (BMAT)
- Mock interviews conducted by practicing medics, veterinarians and medical school professors.
- Participation in our executive shadowing programme securing volunteer placements in hospitals, GP surgeries and veterinary practices.
- Undertaking EPQ as part of curriculum enrichment

Pre- Maths

Students wishing to follow a career in this field will benefit from specific support including:

- Bespoke guidance in preparing UCAS personal statements
- Option to assist in KS3 maths lessons at Great Sankey High School
- UKMT Senior Mathematics Challenge
- Mathematics Olympiad for Girls Competition
- One to one support for preparation of MAT and STEP examinations



"Hi, my name is Oliver and I have just left BHC and I currently study Medicine (MBChB) at the University of Birmingham. Barrow Hall College gave me such a wide range of support with my application. First by providing me with a multitude of student leadership opportunities.

Saying BHC receives and acts upon feedback from the student body is a gross understatement, the students truly are the heart and soul of the college, input is always wanted and welcomed and the sense of family is undeniable. This sense of family really came into its own when I required help with entrance exams and interviews, the aspiring professional program opened doors for me and helped me to gain experiences necessary for my personal statement.

BHC provided me with copious support for my UCAS application at every step. There was never a point where I felt I couldn't turn to someone. I cannot stress enough how proud and glad I am to have studied at BHC, those two years were some of the best of my life thanks to the wonderful ethos created by the students, the head of college and the rest of the college staff."

Oliver - studying Medicine at Birmingham University



Pre- Social Science

Social Science courses at Barrow Hall College are incredibly popular and many of our student go on to study these courses at university. Our new Aspiring Professionals Programme supports these students in the following ways:

- Bespoke guidance in preparing UCAS personal statements
- Participation in our executive shadowing programme securing volunteer placements in Social Science settings.
- Advice and guidance for university open days and Social Science cultural capital opportunities
- Subscription access to 'The Economist' app
- Networking with our Alumni
- Invited to guest speakers in the field - Educational Psychologist, Clinical Psychologist, Probation Worker and more
- Opportunity to attend a two day Social Science college trip to London

Pre-Law

A career in the legal profession is a common aspiration, although supply of law graduates outstrips demand meaning that only the best of the best achieve their dreams of becoming a practicing solicitor or barrister. All Law applicants have following opportunities:

- Bespoke guidance in preparing UCAS personal statements
- Taking part in the Bar Mock Trial competition
- Visit local magistrates and crown courts.
- Advice and guidance for the Law National Aptitude Test (LNAT)
- Networking with our Alumni

Pre- Arts

As Art subjects are increasing in popularity due to our outstanding facilities, we have introduced another Aspiring Professionals Programme supporting our students in the following ways:

- Bespoke guidance in preparing UCAS personal statements and foundation application.
- Participation in our executive shadowing programme securing volunteer placements in the Arts.
- Bespoke post 18 portfolio preparation for general and specific courses.
- Mock interviews conducted by practicing creatives.
- University and Foundation talks with Carmel College.
- Gold Arts Award. Awarded through Trinity College. 16 UCAS points available.
- Advice and guidance for university open days, art events and exhibitions.
- Portfolio workshops and career pathways
- A bespoke Art Studio with daily open access.

Pre- Business/Economics

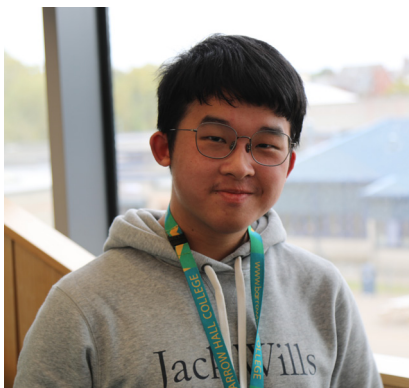
Students wishing to follow a career in this field will benefit from specific support including:

- Bespoke guidance in preparing UCAS personal statements
- Taking part in morning Business and Economics revision lessons and discussions around pertinent topics and current affairs.
- Bespoke personal statement examples that demonstrate further reading in their desired field and evidence of MOOC's completed.
- Mock interviews conducted with existing business professionals in areas of the business that the student is aspiring.
- Business Breakfast attendance with business leaders from around the region
- Attending speeches in college (and virtually) held by leaders within their fields. This started last academic year.
- Production of a research paper of their chosen area such as - cost of living crisis and possible solutions, global inequality, etc.
- Submitting an application to 'The Young Economist of The Year' Award - written paper that is submitted.



"The Pre-Law programme at BHC provides so many opportunities to not only enrich knowledge of the law, but also to experience it in the real world in the form of mock trials, court visits, and workshops in the heart of legal London. Of all the experiences, I'd say that I enjoyed performing in mock trial competitions above all, given the unique chance to gain an insight into the role of a barrister and the workings of the court procedure. Such an opportunity has proved itself to be key in confirming my goal to become a barrister, and this is testament to the extensive enrichment of the Pre-Law programme."

Tom - studying Law with Spanish at Bristol University



Pre-STEM

Students who wish to follow a Science, Technology, Engineering and/or Maths Post-18 route will benefit from provision including the following.

- Bespoke guidance in preparing UCAS personal statements
- Undertake the Silver CREST award run by the British Science Association as part of curriculum enrichment.
- Participation in our executive shadowing programme securing volunteer placements in STEM settings.
- Application support and participation in national programmes such as Nuffield research placement for 4-6 weeks in summer of year 12.
- Advice and guidance for the admissions tests such as the STEP, MAT, NSAA.
- Complete in the National Lego Education competition.
- Compete in the UKMT Senior challenge



Nuffield Research Placements are funded by the Nuffield Foundation and delivered by STEM Learning. They are engaging, hands-on research projects, where students have the opportunity to make a meaningful contribution towards the work of a host organisation.

These placements are a fantastic opportunity for students to apply skills and knowledge learned in college and work alongside researchers and industry professionals to develop subject understanding alongside research and quantitative skills to expand career prospects and enhance UCAS personal statements and applications to university. An independent evaluation has shown Nuffield Research Placements increase access to university courses in STEM subjects.

Aspen completed a Nuffield Research Placement with the University of Manchester entitled 'An in-silico structural study of the plastic degrading enzyme IsPETase and its evolved variants.'

Pre-Teaching

As we are attached to the Omega Teaching Partnership, this programme is of great importance. Not only does it involve activities throughout the two years at college, it also includes Post-18 support with the potential of a School Direct interview with the Omega Teaching Partnership. The programme includes:

- Bespoke guidance in preparing UCAS personal statements
- Pre-teaching AoPE course (Level 3) as part of curriculum enrichment
- Mentoring of school students at Great Sankey High School and our MAT primaries
- Working alongside trainee teachers and attending teacher training conferences
- Participation in our executive shadowing programme securing volunteer placements in education settings.
- Joining our alumni network in the future
- Guaranteed school direct interview with Omega Teaching Partnership in the future



Destinations

BHC students achieve highly and go on to study at universities all over the UK including the most prestigious.

Ashvin – International relations @ St Andrews

Jacob – Philosophy @ Cambridge

Maarij – Computer Science & Mathematics @ Manchester

Abbie – History @ Edinburgh

Thea – Psychology @ Leeds

Rhiannon – Law @ Lancaster

Amelia – Business Management @ Leeds Beckett

Finlay – Biomedical Sciences @ York

Lewis – Biology @ John Moores

Charlotte – Primary Education @ Edge Hill

Grace – Policing Studies @ John Moores

Aaliyah – Fashion @ Salford

Qi Xuan – Architecture @ Nottingham Trent

Ella – Mental Health Nursing @ Leeds

Hannah – Volcanology @ Keele

High Achievers Programme



Members of the High Achievers Programme at BHC have achieved at least 7 Grades 7-9 (A*/A) at GCSE. The programme offers a comprehensive package of support for those thinking of applying to Oxbridge or other top universities and those applying for competitive courses such as Medicine, Veterinary Medicine or Dentistry.

The HE+ Project

BHC is part of this impressive collaborative project between the University of Cambridge and state colleges. As detailed on the Cambridge website 'the overall goal of the project is to encourage and prepare more academically-able students to make competitive applications to top universities, including the University of Cambridge.' The project 'gives students many opportunities to develop their academic skills, understanding and confidence, whilst also receiving advice and guidance about applying to higher education.' BHC high achievers will have the opportunity to take part in extension classes, master classes and workshops at the North West HE+ hub college and at Oxford and Cambridge as well as undertaking a themed research project in their subject of choice. They will also enjoy a residential visit to the University of Cambridge (Sidney Sussex College) where they gain real insight into what studying and living there would be like.



Competitive Course UCAS Support

Our high achievers are encouraged to go on a journey of discovery to aid their applications to the top universities. They use subject discovery lists to guide their wider reading and research; they apply for summer schools both in the UK and abroad; they engage in volunteering and work experience, and they generally take every opportunity that comes their way to enhance their applications. Our dedicated tutor team provides excellent advice and guidance throughout the application process including one to one personal statement support and expertly written references which can make all the difference to gaining a place on a competitive course. Drawing from a range of industry, professional and alumni contacts we will put our students through their paces in mock interviews. Past students have benefited from the advice and guidance from University Professors, practicing barristers who graduated from Oxford and past students currently studying at some of the top universities in the UK



Student	A level grades	Destination
Tom	A*A*A*A*	Bristol - Law
Hannah	A*A*AA	Durham - Law
Matthew	A*A*AB	Liverpool - Law
Lewis	A*A*AA	Lancaster - Maths & Physics
Furkan	A*AAA	Manchester - Medicine
Haashim	A*AAAB	Manchester - Electrical Engineering
Will	A*A*AA	St Andrews - Psychology
Ben	A*A*AA	Lancaster - Computer Science & Maths

BHC Careers Training Zone Programme

For September 2023 entry, we are delighted to announce the introduction of our brand-new careers training zone programme, designed to fit the needs of all BHC students.

On interview, then confirmed on entry to year 12, students will select either our Apprenticeship or University programme. Over the course of their two years with us, students will then participate in a range of career boosting activities, designed to train and prepare them for their eventual chosen pathway.

Our university students will benefit from a range of contact points with Liverpool and Edgehill University, whilst we have also recognised the growing attraction of apprenticeships for students of all abilities and apprenticeship students will receive support from external apprenticeship organisations.

A selection of our experiences is provided below.

*** Please note, this list is not exhaustive

University training pathway

- Access to the BHC University Passport
- Two University experience days with a bespoke programme provided for BHC students
- A unique HPA programme for students applying for competitive courses/OXBRIDGE
- Attendance to the UCAS convention
- Student talks on the application process
- Personalised support from tutors with personal statements, references and applications
- An open reference process with students involved every step of the way including sending their own application off with their HOY
- A parent/carer UCAS guidance Evening
- A parent/carer UCAS Finance guidance Evening

Apprenticeship training pathway

- Access to the BHC Apprenticeship Passport
- UNIFROG support to create letters of application and a live CV
- Attendance to a careers Fayre
- Attendance to an apprenticeship Fayre
- Annual trip to a local employer for example Amazon PLC
- Guest speakers from local companies and ex students
- Application support from external apprenticeship organisations
- Mock interviews with local employers
- One to one appointment with our on-site careers specialist
- A parent/carer Apprenticeship guidance evening

Our programme will work closely with The University of Liverpool, Edgehill University and external apprenticeship organisations.

***Students are welcome to change pathways over the course of their studies



Edge Hill
University



BHC Pathways & Entry Requirements

Despite our size, BHC offers a wide range of courses to suit all ambitions. You will follow a personalised programme of study following one of three potential pathways.

Academic Pathway

You would take 3 A levels, with the opportunity to study 4 if you have achieved a majority of grades 8 and 9 at GCSE. You will also have the opportunity to study the Extended Project Qualification (EPQ) to enrich your study programme further.

To take an A level course, you need at least 3 x grade 5s (one being in English Language) and 2 grade 4s at GCSE. In addition to this, individual courses may have specific requirements which you can find on the relevant course page.

Vocational Pathway

You would take a combination of 3 BTEC courses to suit your aspirations, whilst keeping your vocational options open.

To study on this pathway you will need at least 5 grade 4s at GCSE including English Language. In addition to this, individual courses may have specific requirements which you can find on the relevant course page.

Mixed Pathway

Some of our students choose to study a combination of A Level and vocational courses e.g. 2 A levels and 1 BTEC or vice versa.

To study on this pathway you need at least 5 grade 4s at GCSE including English Language and would need to meet the specific A level course(s) entry requirements.

Our experienced Heads of Year and Tutors will guide you in your course choices, to ensure that you choose the right courses for your aspirations. Universities often have their own subject requirements, for instance to study medicine you would need to take A level Biology and for most Engineering courses you would need A level Maths and Physics. Your course choices may change throughout the application process and those you start in September may be very different from your first choices in your application. This may be due to unexpected results or due to the guidance received by our team.



COURSE DIRECTORY

Vocational Pathway **(all courses are the equivalent** **of 1 A level)**

BTEC Applied Science
BTEC Business Studies
BTEC Creative Media
Level 3 Applied Diploma in
Criminology
BTEC Health & Social Care
Cambridge Technical Introduction
Diploma IT
BTEC Sport

Academic Pathway

A Level Art & Design
A Level Biology
A Level Business Studies
A Level Chemistry
A Level Computer Science
A Level Economics
A Level English Language
A Level English Literature
A Level French
A Level Further Mathematics
A Level Geography
A Level German
A Level Graphic Design
A Level History
A Level Law
A Level Mathematics
A Level Music
A Level Music Technology
A Level Philosophy & Ethics
A Level Photography
A Level Physics
A Level Politics
A Level Product Design
A Level Psychology
A Level Sociology
A Level Spanish
A Level Textiles
A Level Theatre Studies

BUSINESS & ECONOMICS

Welcome message from Chris Wilson Head of BEICT Faculty

Hello, my name is Mr Wilson the head of Business and Economics. I would like to welcome you to the faculty and hopefully encourage you to choose one of our highly interesting subject areas to study.

This is an exciting time to be studying Business & Economics!

The "Great Recession" of 2007/2008, BREXIT, GDPR, COVID-19 and Black Lives Matter present an ideal opportunity to study these courses and gain a deeper understanding of how, why and what happened in these life changing events. Business, Economics and Law are three vital pillars of our culture and society and through studying these courses you will be better informed and more aware of the world around you. We look to develop well rounded, engaging and inquisitive students through the lessons we deliver and actively ask you to question the world in which we live. These subjects will strengthen applications to university and also develop ideas for apprenticeships and future careers.

Business and Economics students have gone on to study a wide range of courses at university including 'straight' Economics, PPE (Philosophy, Politics & Economics), Business Management, Marketing, Business with Finance, Sports Management and Accounting. Curriculum enrichment includes the Young Enterprise Competition, the IFS Student Investor Competition and trips include going to the Old Trafford ground to take part in bespoke workshops.

The department is lucky to have an exceptional teaching team who have considerable experience, including examination board roles as senior examiners and authors. The resources you will be provided with go beyond a textbook and draw from this vast experience to ensure you have everything you need to secure the top grades.

If you would like to know more about any of our courses please do not hesitate to get in touch. Finally, I hope to see you in one of our classrooms very soon.



A LEVEL **BUSINESS STUDIES**

Level 3

Duration: 2 Years

Exam Board: Eduqas

Entry Requirements: 3 Grade 5s (including English Language), 2 grade 4s plus a grade 5 in GCSE Business Studies (if studied) and a grade 4 in Maths.

What will I study? You will learn how businesses are operated, how they respond to changes in the economy, law, demographic composition and more. There will be plenty of number crunching as the world of Business is full of numbers!

How will I be assessed? By externally assessed written examinations at the end of the second year of the course. The exams will consist of essays plus data response questions.

What will it lead to? Undergraduate degrees or advanced apprenticeships in Business, Business Management and other related subjects including Marketing, Human Resource Management or Accounting and Finance. Careers may include Entrepreneurship, Business Management or Banking.

BTEC EXTENDED CERTIFICATE IN **BUSINESS**

(Equivalent to 1 A Level)

Level 3

Duration: 2 Years

Exam Board: Pearson

Entry Requirements: 5 GCSE grades 9-4 including a grade 4 in English Language.

What will I Study? You will complete 3 mandatory units on Exploring Business, Personal and Business Finance and Developing Marketing Campaigns plus an additional optional unit.

How will I be assessed? A mixture of external examination and internal assessment across the four units.

What will it lead to? You may undertake an apprenticeship in a business related field such as Business Administration, Accountancy, Business Advisor, or Business Management or you may want to study a related course at University, or in fact become an Entrepreneur owning and running your own business.

A LEVEL **ECONOMICS**

Level 3

Duration: 2 Years

Exam Board: Eduqas

Entry Requirements: 3 Grade 5s (including English Language and Maths) and 2 grade 4s.

What will I study? You will study microeconomics that models the behaviour of individuals and firms and macroeconomics which models the behaviour of the whole economy. You will also study economics from a global perspective.

How will I be assessed? By three externally assessed examinations at the end of the second year of the course. These exams will consist of a mixture of multiple choice questions, data response questions and of course, essays.

What will it lead to? Economics is well respected by universities and employers so it opens up a wide range of opportunities. Future careers may include becoming an Actuarial Analyst, Chartered Accountant, Data Analyst, Financial Risk Analyst, Investment Analyst, Statistician or Stockbroker.

COMPUTING & ICT

Message from Julie Binks Head of ICT

It is an exciting time to get involved with Computing and IT whether that be in web creation, data analysis, encryption, cyber security or programming. Here at Barrow Hall College we are able to offer you a range of opportunities to develop your skills within these areas and beyond that will equip you for a career or further study in these fields.

So why study with us at BHC?

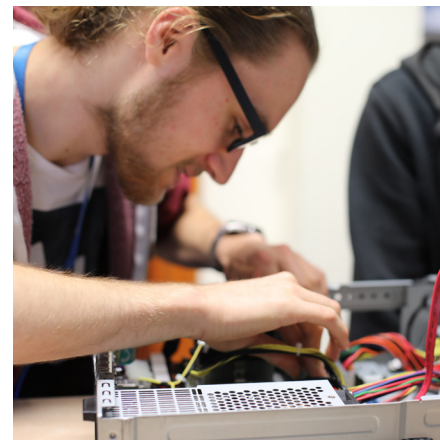
The department is made up of subject specialists with considerable experience. We consistently deliver excellent results on both the A Level and vocational course and have had students go on to study at prestigious Russell Group universities and secure higher apprenticeships including one student who is working with the British Intelligence Services. Our students don't just go on to study computer science or ICT but degree courses such as Engineering or combined courses such as Computer Science and Maths. As a department we recognise that these subjects go beyond the classroom and by allowing you to explore these areas freely in a safe and controlled environment you will develop a well-rounded understanding and appreciation for all that is involved.

Our super-curriculum enrichment includes trips and visits to IT Live at Disneyland Paris, the Escape Rooms in Warrington, Barclays Technology in Knutsford and to local universities. Our local and national business links also mean that you will benefit from careers talks and executive shadowing opportunities.

Students studying the computer science course have developed a range of 2D and 3D games, using a programming language of their choice. Students who study this course leave us with a range of programming languages which are used in industry; HTML, CSS, JavaScript, Python, SQL and C#.

Our courses allow the students to build up their confidence, working collaboratively and presenting their findings, again reading them for the world of work. They are preparing themselves for industry by becoming aware of the power of technology and its impact on society and the environment.

Consider joining us, and become an ambassador of Computer Science and ICT. We look forward to sharing our passion with you.



A LEVEL COMPUTER SCIENCE

Level 3

Duration: 2 Years

Exam Board: OCR

Entry Requirements: 3 Grade 5s (including English Language), 2 grade 4s plus a grade 5 in Computer Studies (if studied at GCSE) and grade 6 in GCSE Mathematics . Please note that if you want to study Computer Science at some Russell Group universities you will be expected to study A level Mathematics.

What will I study? You will study 3 components - 1: Computer Systems 2: Algorithms and Programming and 3: Programming Project.

How will I be assessed? Two externally assessed examinations (Components 1 & 2) worth 80% plus one internal assessment (Component 3) worth 20%.

What will it lead to? You could pursue your study of computer science at undergraduate level for example on a BSc or MEng Computer Science course, or secure a higher or degree apprenticeship. Future careers may involve applications analysis, business analysis, data analysis, games development, information systems management, consultancy, or multimedia programming.

CAMBRIDGE TECHNICAL INTRODUCTION

DIPLOMA **IT** (Equivalent to 1 A Level)

Level 3

Duration: 2 Years

Exam Board: OCR

Entry Requirements: 5 GCSE grades 9-4 including a grade 4 in English Language. Ideally you will have studied the Cambridge National in IT and/or GCSE Computer Science and achieved a Level 2 Pass/Grade 5 or above.

What will I study? Mandatory units in Fundamentals in IT, Global Information and Computer Networks plus 2 optional units.

How will I be assessed? 2 units are externally assessed by examination and 2 internally assessed coursework units.

What will it lead to? You could go onto university to study on an IT related course or secure an advanced apprenticeship. Future careers could include ICT technical support, web design, database administration, ICT sales, network management or IT consultancy.

CREATIVE ARTS

Message from Lorna Philcock Head of Art

Interested in a career within the creative industry? Then we have the courses for you. We offer A levels in Art & Design, Textiles and Photography.

The creative industries are one of the fastest growing parts of the UK economy. Opting for one of our visual arts courses can open the door to a career in architecture, games design, art therapy, illustration, web design, interior design, photography, fashion design, fashion purchasing, advertising and much more.

Students in the past have gone on to study Women's Fashion Design, History of Art, Fashion Styling and Promotions, Photography, Fine Art, Architecture, Make-up Design and Special Effects, Teacher Training, Fashion Buying and Merchandising, Illustration, Surface Pattern Design and Graphic Design.

During our two year courses you will have various enrichment opportunities such as gallery visits with the possibility of a more in depth cultural visit. Places are available for our workshop weekend with returning visiting artist Ian Murphy and we are currently researching other possible artists to run a second workshop. You can opt into our Art Club which takes place on a Wednesday afternoon. Towards the latter half of our course we invite past students in to discuss their career path while delivering a practical workshop within their specialized area.

Have I persuaded you yet? At BHC while we do expect you to buy some of your own equipment we supply more than most other colleges ensuring you are fully prepared for every lesson and your personal progression isn't determined by your finances. Our teaching team is dedicated to helping you reach your full potential, discovering who you are with the creative industry and guiding you to your future career with confidence and self-determination.



A LEVEL ART

Level 3

Duration: 2 Years

Exam Board: Eduqas

Entry Requirements: 3 Grade 5s (including English Language and Art) and 2 grade 4s.

What will I study? Drawing, painting, printmaking, mixed media, ceramics and 3D work in year 1. In year 2 the focus will be on mastering your own specialist area.

How will I be assessed? Your Personal Investigation coursework will be worth 60% of your final mark and you will sit an externally assessed examination worth 40%.

What will it lead to? You may go onto an Art Foundation Course and future careers may include becoming an Architect, Illustrator, Curator, Theatre & Set Designer, Print Maker or Make-Up Artist.

A LEVEL TEXTILES

Level 3

Duration: 2 Years

Exam Board:AQA

Entry Requirements: 3 Grade 5s (including English Language and Textiles) and 2 grade 4s.

What will I study? Surface decoration, fabric manipulation, applique, machine and hand stitching in year 1. In year 2 you will focus on mastering your chosen specialist area.

How will I be assessed? Your Personal Investigation coursework will be worth 60% of your final mark and you will sit an externally assessed examination worth 40%.

What will it lead to? You may go onto university or gain an apprenticeship and work as an Interior Designer, Costume Designer, Fashion Designer, Fashion Buyer, or Merchandiser.

A LEVEL PHOTOGRAPHY

Level 3

Duration: 2 Years

Exam Board:

Entry Requirements: 3 Grade 5s (including English Language and an Art and Design subject) and 2 grade 4s.

What will I study? You will be required to work on one or more areas of photography such as portraiture, landscape, still life, documentary or fashion photography, multimedia, or moving image. You will be expected to demonstrate skills such as audience awareness, responding to an issue and appreciation of viewpoint.

How will I be assessed? You will have two internally assessed (externally moderated) units. These will be completed in year 2.

What will it lead to? You may go onto university or an apprenticeship and enjoy a future as a Photographer, Graphic Designer, Magazine Features Editor, Television Camera Operator, Advertising Art Director, Digital Marketer or a Visual Merchandiser.



DESIGN

Message from Julie Attwood Head of DT

If you are interested in designing and creating new products and solutions then these courses are for you. Joining us at Barrow Hall College is a natural progression from KS4 to KS5 in a friendly and familiar environment with staff that you already know. If you are new to the college you will soon feel part of this special place. Our staff are experienced and strive to give you the best learning experience possible.

During the course you will visit local galleries and workshops to enhance your learning experience. We also have excellent facilities including 3D printers, laser cutters, Adobe Photoshop and Illustrator. When you leave Barrow Hall College you will be versatile designers with a range of skills which will enable you to be successful in an ever-changing competitive world.

These subjects can lead you to many different career paths from university to high level apprenticeships. Successes of our students in the past few years have included degree sponsored apprenticeships with JCB and ACOM Civil Engineering, Architecture at University of London, Graphic Design at University of Liverpool and Product Design at University of Leeds.

Our teachers will support you in every step of your course to ensure you reach your maximum potential.



A LEVEL GRAPHIC DESIGN

Level 3

Duration: 2 Years

Exam Board: AQA

Entry Requirements: 3 Grade 5s (including English Language and a DT subject) and 2 grade 4s.

What will I study? You will be required to work in one or more area(s) of Graphic Communication such as: Interactive Media, Advertising Packaging Design, Communication Graphics, Branding Multimedia and Motion Graphic Design. You may explore overlapping areas and combinations of these areas.

How will I be assessed? Internal assessment of your Personal Investigation Coursework (60%) and two externally assessed examinations (40%)

What will it lead to? You may go onto university to study a relevant subject or undertake an apprenticeship and enjoy a career as an Architect, Animator, Advertising Art Director, Creative Director, Graphic Designer, Illustrator, Print Maker or Production Designer.

A LEVEL PRODUCT DESIGN

Level 3

Duration: 2 Years

Exam Board: AQA

Entry Requirements: 3 Grade 5s (including English Language and a DT subject) and 2 grade 4s.

What will I study? You will complete a 'Design and Make' project including a portfolio of work. You will study 'Technical Principles' whilst being able to demonstrate maths and science skills.

How will I be assessed? Internal assessment of your design and make project (50%) and two externally assessed examinations (50%)

What will it lead to? You may go onto university to study a relevant subject or undertake an apprenticeship and enjoy a career as an Advertising Art Director, Automotive Engineer, Graphic Designer, Materials Engineer, Product Manager, or Production Designer.

MEDIA

Message from Sarah Edwards Head of Media

Studying Media opens up your understanding of how things work, how people become informed (or misinformed), and offers you the opportunity to understand how and why the media functions, including learning by creating your own media texts. From television to cinema, radio to podcasts, social media to blogs and vlogs, – media studies plays a big part of our everyday day. And it's never been so relevant than in the internet age, where actors, singers, and personalities can make their own celebrity online using their media skills. As technology, creativity, and competition increases, these skills become more in demand all over the world.

The range of industries represented by creative digital media production includes media such as film and television, digital publishing and digital games. These are some of fastest growing industries in the UK and are one of the areas in which the UK leads the rest of the world. Media studies will equip you with the communication and technology skills needed to succeed in the modern workplace, whether in the media industry or not. Plus at BHC we work with local industries to gain experience of in-house media roles, have 'in conversation' lectures with film editors and attend workshops in media skills at the Media Museum, Media City and London film museum.

Whether you choose to pursue a career in film and television, fight for your own fame, or take your skills into business – you'll be well equipped for what the modern workplace is looking for.



BTEC EXTENDED CERTIFICATE IN CREATIVE MEDIA (Equivalent to 1 A level)

Level 3

Duration: 2 Years

Exam Board: Pearson

Entry Requirements: 5 GCSE grades 9-4 (including a grade 4 in English Language and Level 2 Pass in Media, if studied.)

What will I study? You will study three Mandatory Units - Media Representations, Pre-Production Portfolio and Responding to a Commission plus one optional unit.

How will I be assessed? 50% internal assessment and 50% externally assessed examinations.

What will it lead to? You could go on to study on a related course at university or undertake an apprenticeship and enjoy a career as a Media Planner, Multimedia Specialist, Programme Researcher, Social Media Manager, Producer, or a Web Content Manager.





ENGLISH

Message from Anna Kitchener Head of KS5 English

'A word after a word after a word is power.' – Margaret Atwood

If you are an avid reader and enjoy nothing more than exploring and evaluating how texts are constructed, we are waiting for you to join our classroom discussions in the English department!

If you are interested in where our Language came from, how it has changed over time and how we continue to adapt its use in society today, you will thoroughly enjoy studying English Language A-level here at Barrow Hall College. There are exciting trips throughout the course to Media City and The Guardian where you can watch journalism in action, taking your learning beyond the classroom. You will be inspired to create your own articles and commentaries on topics that are important to you, supported and guided by our team of experienced teachers.

We also offer English Literature A-level, where you will have the opportunity to study a range of authors and genres, building confidently on your understanding of tragedy and crime from GCSE. Class sizes here are not too large, meaning that you will be able to have plenty of personalised feedback from your expert teachers. Theatre trips are tailored to suit the interests of the class and to challenge you to experience a range of genres through live performances. You will also have the chance to visit Shakespeare's birthplace at Stratford-upon-Avon and listen to a professor provide further insight into the poetry, plays and novels you are studying.

Students who have studied English at Barrow Hall College have gone on to study English at universities such as Durham, Birmingham, Glasgow and Manchester, leading them to successful careers in Linguistics, Journalism, Law, Publishing and Education.



A LEVEL ENGLISH LANGUAGE

Level 3

Duration: 2 Years

Exam Board: AQA

Entry Requirements: 3 Grade 5s (including English Language) and 2 grade 4s.

What will I study? Unit 1 - Language, the Individual and Society; Unit 2 - Language Diversity and Change; Unit 3 Language in Action.

How will I be assessed? Two externally assessed examinations held at the end of year two equating to 80% of your qualification and coursework equating to 20%.

What will it lead to? You may go onto university to study English further, or a course which can draw on your English skills. You may enjoy a career as a Digital Copywriter, Editorial Assistant, Lexicographer, Journalist, Publishing Copy-Editor/Proofreader; Web Content Manager. Writer, or an Advertising Account Executive.

A LEVEL ENGLISH LITERATURE

Level 3

Duration: 2 Years

Exam Board: AQA

Entry Requirements: 3 Grade 5s (including English Literature) and 2 grade 4s.

What will I study? Unit 1 – Literary genres: Aspects of Tragedy; Unit 2 – Texts and Genres: Elements of Crime Writing; Unit 3 – Theory and Independence.

How will I be assessed? Two externally assessed examinations held at the end of year two equating to 80% of your qualification and coursework equating to 20%.

What will it lead to? You may go onto university to study English further, or a course which can draw on your English skills. You may enjoy a career as a Writer, Journalist, Teacher, Digital Copywriter, Editorial Assistant, or a Web Content Manager.



GEOGRAPHY

Message from Shaun Elliot Head of Geography

Geography is now the 'must have' A level across the UK (Guardian Newspaper). Geography is a subject for our times. It is inherently multidisciplinary in a world that increasingly values people who have the skills needed to work across the physical and social sciences. Geography is now all the rage! Geography A level is also highly valued across the Russell Group Universities.

At Barrow Hall College, we offer an exciting A level course following the Edexcel Specification. Modules include Tectonics, Coasts, Superpowers and Migration. There is a coursework element (20%) where you can be creative in designing your own Geographical Investigation. The results are consistently very good with 59% A*AB (2019).

The Geography team is made up of very enthusiastic and inspiring teachers with specialisms in physical and human Geography. Many students in the past have continued to study Geography at University. Timothy Cunningham (class of 2019) focusing on Physical Geography went on to study Meteorology and Climate Science at Leeds University. Eleanor Furbank (class of 2019) focusing on Human Geography went on to study Landscape Architecture at Sheffield University. Geography is a very exciting course at A level.

We offer 4 days of Fieldwork as part of the course including an overnight stay in Wales where you can carry out your own personal fieldwork. There is also the option to sign up for our whole school trips to Iceland and Italy. Whether you are a 'physical' or a 'human' Geographer – you will love the balance of topics taught at A level.

Start your Geography journey here at Barrow Hall College and you will never look back.



A LEVEL GEOGRAPHY

Level 3

Duration: 2 Years

Exam Board: Edexcel

Entry Requirements: 3 Grade 5s (including English Language and Geography) and 2 grade 4s.

What will I study? Physical Geography (Tectonic Hazards, Coastal Landscapes, Water Cycle and Insecurity and the Carbon Cycle and Energy Security) & Human Geography (Globalisation, Regenerating Places, Superpowers and Migration).

How will I be assessed? 80% externally assessed examinations (3 papers) plus 20% Independent Investigation.

What will it lead to? You may go onto university to study on a related course and enjoy a career as a Cartographer, Commercial/Residential Surveyor, Environmental Consultant, Geographical Information Systems Officer, Planning and Development Surveyor, Teacher, Town planner, Landscape Architect, or Nature Conservation Officer.



HISTORY

Message from Mark Farrer Head of History



History is widely recognised as being one of the most rewarding and universal subjects to study at A level. Consistently in the top 5 of A level subjects nationally (Independent). Studying A-Level History not only helps improve your knowledge of the past, but it also helps you gain skills that are invaluable in many jobs. Some of these skills include analysing, researching, communication and problem-solving. You'll also gain the ability to prioritise information and learn how to make vital decisions. This helps you to build an important skill-set needed for progression into university or a career.

At Barrow Hall College we offer an exciting and detailed A level course following the AQA specification. Over the 2 years you will study the exam topics of 'The making of Modern Britain 1951-2007' and 'Germany; the quest for political stability 1871 – 1991'. Alongside these modern history topics is the NEA independent study of the role witchcraft in the Stuart period.

The history department has grown over the last 3 years at Great Sankey which reflects our success as a department. A level history is taught by 4 specialists from a team of 7, all A level teachers teach a topic that they have studied at degree level. As a department we have over 70 years of teaching experience, with the team being made up of enthusiastic, dedicated, and inspiring specialists. All of whom hold the student at the centre of their teaching. As part of our A level alumni we have students who have gone on to read history at Cambridge, psychology at St Andrews, Law at Bristol, PPE at Liverpool and history at Manchester. Those students were able to do so having achieved A/A* in A level history.

History is a course that allows students to develop into mature young adults who are prepared for university. By choosing to study history at Barrow Hall you can have confidence that your teachers have prepared you to be independent in your studies but that you are always welcome to turn to us for support from the moment you enter the college.

A LEVEL HISTORY

Level 3

Duration: 2 Years

Exam Board: AQA

Entry Requirements: 3 Grade 5s (including English Language and History) and 2 grade 4s.

What will I study? The Quest for Political Stability: Germany, 1871-1991; The Making of Modern Britain, 1951-2007.

How will I be assessed? At the end of year 2 you will sit 2 externally assessed examinations worth 75%. Your NEA, which is internally assessed, counts for 25% of your final grade

What will it lead to? Studying A-Level History not only helps improve your knowledge of the past, but it also helps you gain skills that are invaluable in many jobs. Some of these skills include analysing, researching, communication and problem-solving. You'll also gain the ability to prioritise information and learn how to make vital decisions. This helps you to build an important skill-set needed for progression into university or a career.

POLITICS

Message From Ben Evans Head of Politics



A-Level Politics allows students to gain an insight into political beliefs central to an understanding of the modern world. It also develops analytical and evaluative skills in relation to interesting topics prevalent in the turbulent political climate of today allowing students to gain a greater understanding of the big questions which dominate the society they are part of. A-level Politics is an exciting and challenging course which offers students the chance to be up to date with the world they live. There's no denying that it's one of the most interesting and engaging qualifications you can choose. The course covers news and current affairs from the UK and US and helps you understand how the UK country is run and develops research, written communication and debate skills. It also helps grow in confidence before taking your next steps in further education or the working world.

At Barrow Hall College we offer a course that includes in depth studies of UK and US government and politics following the AQA specification. Comparisons across the two political systems are required in the topic entitled Comparative politics. Students at Barrow Hall will also be required to identify parallels, connections, similarities and differences between aspects of politics. This will ensure that students develop a critical awareness of the changing nature of politics and the relationships between political ideas, political institutions and political processes. Additionally, the course will look closely at the political ideas such as Conservatism, Liberalism and Socialism which have relevance to both of the systems of government and politics along which an additional ideology of our choice. The study of the four ideologies will enhance the students' knowledge and understanding of politics, political debate and political issues in both the UK and the USA.

A-Level Politics is a new course at Barrow Hall College but its close links to our extremely experienced and successful History and Social Science Departments mean that you can rely on be well supported during your time here.

An A-Level in Politics is ideal if you're considering studying politics, sociology, ethics, advertising or journalism at university and is highly regarded by employers in industries including politics, international organisations, the media, government and the civil service.

A LEVEL POLITICS

Level 3

Duration: 2 Years

Exam Board: AQA

Entry Requirements: 3 Grade 5s at GCSE (including English Language) and 2 Grade 4s.

What will I study? There are 3 separate units of the Politics A-Level; Government and Politics of the UK, Government and Politics of the USA + comparative politics and Political Ideas following the AQA specification.

How will I be assessed? At the end of Year 13 there are three two hour exam papers each worth a third of your A-Level

What will it lead to? An A-Level in Politics is ideal if you're considering studying politics, sociology, ethics, advertising or journalism at university and is highly regarded by employers in industries including politics, international organisations, the media, government and the civil service.

PHILOSOPHY & ETHICS

Message from Lisa Baker Head of Philosophy & Ethics



Philosophy and Ethics is an exciting subject that explores the world as people find it. In the study of Philosophy and Ethics we investigate the most profound questions and the deepest aspects of what it means to be human. Are we simply animals that have evolved or do we have a spiritual dimension that survives us after death? Does God exist? What makes one action right and another action wrong?

Studying Philosophy and Ethics encourages you to think critically and to suspend your own beliefs and disbeliefs whilst thinking. It encourages open-mindedness and helps you mature in your thoughts. We study the AQA specification that consists of three parts; the study of Philosophy, the study of Ethics and the study of Religion. Philosophy and Ethics helps to develop skills of analysis, evaluation and literacy. This makes it an excellent subject when applying to university. Previous students have gone on to study at some of the top universities in the country studying a wide range of subjects such as law, medicine, politics, journalism, teaching, nursing, social work and business, to name but a few!

Barrow Hall College is the perfect place to study Philosophy and Ethics! Our results are fantastic. Last year 73% of the class received either A*, A or B, with 100% of the class receiving grades A*-C, this is a reflection of the fantastic quality of teaching in the department. The Philosophy and Ethics teaching team is made up of subject specialists who are all excited to be teaching this subject and encourage the very best from their students. Teachers work hard to ensure there is variety in the classroom and learning can be fun! At BHC we also really understand the importance of opportunities to learn outside the classroom to deepen your love of the subject. It is because of this we have taken students on trips to the Vatican in Rome and Auschwitz in Krakow. Students have also had opportunities to attend talks by important key scholars they study in the A level specification such as Richard Dawkins.

Philosophy and Ethics is a fascinating subject that challenges your thinking and allows you to explore the world in which you live. If you enjoy debates and critical thinking this is the subject for you!

A LEVEL PHILOSOPHY & ETHICS

Level 3

Duration: 2 Years

Exam Board: AQA

Entry Requirements: 3 Grade 5s (including English Language and Religious Studies) and 2 grade 4s.

What will I study? Component 1: Philosophy of Religion and Ethics and Component 2: Study of religion (Christianity) and Dialogues.

How will I be assessed? Two externally assessed examinations worth 50% each representing the 2 components studied.

What will it lead to? You could go onto study a related course at University such as a BA Theology degree or Philosophy and religion. Future careers may include teaching, politics, journalism or law.

MATHEMATICS

Message from Michael Hay Head of Maths

Mathematics sits at the centre of many different pathways to your future. At BHC we show you where our phenomenal subject and its applications move on from after Year 11. Our staff are passionate, knowledgeable and specialist in the subject. They provide you with high-quality teaching and outstanding levels of support to enable you to fulfil your potential.

We look to challenge and enrich you as a mathematician by competing in activities such as the UKMT Senior Mathematics Challenge, masterclasses to help you prepare for STEP and MAT papers and the annual Ritangle competition run by MEI, where our Year 12 team were recognised for their outstanding efforts.

Our students use the mathematical qualifications that they gain to move onto a variety of different areas, including Higher Education courses and Apprenticeships. We are consistently successful in sending students to Oxbridge and Russell Group institutions and some of our past students at BHC are highly renowned in areas such as data analysis, engineering, forecast modelling and actuarial science.



A LEVEL MATHS

Level 3

Duration: 2 Years

Exam Board: AQA

Entry Requirements: Grade 6 in Maths (7 preferred), 3 Grade 5s (including English Language) and 2 grade 4s.

What will I study? A level Mathematics consists of developing concepts in the pure mathematics elements and then applying these two areas such as statistics and mechanics.

How will I be assessed? Three externally assessed written examinations at the end of year 2.

What will it lead to? You may go on to study Maths at university or a degree where A level Maths is expected such as Computer Science or Engineering. Future careers may include: Actuarial Analyst; Chartered Accountant; Data Scientist; Statistician; Teacher; Research Scientist or Investment Analyst.

A LEVEL FURTHER MATHS

Level 3

Duration: 2 Years

Exam Board: AQA

Entry Requirements: Grade 8 in Maths, 3 Grade 5s (including English Language) and 2 grade 4s.

What will I study? A level Further Mathematics builds upon concepts being developed in pure mathematics elements, such as, algebra, matrices and complex numbers. This is extended to investigating their use in mathematical applications, such as statistics and mechanics.

How will I be assessed? Three externally assessed written examinations at the end of year 2.

What will it lead to? You may go on to study Maths at university or a degree where A level Maths is expected such as Computer Science or Engineering. Future careers may include: Actuarial Analyst; Chartered Accountant; Data Scientist; Statistician; Teacher; Research Scientist or Investment Analyst.

CORE MATHS (Equivalent of 1 AS Level)

Level 3

Duration: 1 Year

Exam Board: AQA

Entry Requirements: 3 Grade 5s (including English Language and Maths) and 2 grade 4s.

What will I study? Topic include finance, estimation and statistical analysis

How will I be assessed? Two externally assessed written examinations at the end of the year.

What will it lead to? May lead to a variety of career roles not just those in accounting and finance. It will help apply mathematical techniques in economics, sociology, chemistry, geography, computing and business management.



MODERN FOREIGN LANGUAGES

Message from Trish Mellado
Head of MFL



Do you like the idea of having a second language to enhance your educational programme and increase your employability prospects? We live in a multicultural world and companies are increasingly aware of the advantages of recruiting people with language skills. Many students in England do not study a foreign language after GCSE, and yet employers really value young entrants to the workplace who have language skills to communicate with clients outside Britain. An A level language course in French, German or Spanish will combine well with any A level programme here at Barrow Hall College.

An A level qualification in a language can enhance your university application as it is well-respected by university admissions tutors. Careers in business, marketing, journalism, engineering, law and the tourist industry all demand good communication skills, and the ability to speak a foreign language will give you the edge when applying for jobs.

By choosing to study A level languages at Barrow Hall College, you will see your linguistic ability quickly improve. Our class sizes are small and this creates the perfect environment to enable your language skills to develop and consequently your confidence in your own ability to speak and write with increasing fluency will grow. Our A level students have participated in trips to Barcelona, Madrid, Leipzig, Köln and Paris in recent years.

In recent years some students of languages at Barrow Hall College have chosen to continue their studies of French, German or Spanish at degree level but others have gone on to combine their study with other subjects such as law and education. The beauty of studying a language is that it is so versatile; it complements and combines with a wide range of other subjects and is a lifelong skill.



A LEVEL FRENCH

Level 3

Duration: 2 Years

Exam Board: AQA

Entry Requirements: 3 Grade 5s (including English Language and French) and 2 grade 4s.

What will I study? The course is topic based and the following areas will be studied over the two years: The changing nature of family; The 'cyber-society'; The place of voluntary work; A culture proud of its heritage; Contemporary francophone music Cinema: the 7th art form Positive features of a diverse society; Life for the marginalised; How criminals are treated; The critical study of one French film and one book

How will I be assessed? You will be externally assessed on two written examination papers and an oral examination at the end of year 2.

What will it lead to? You may go onto study languages at university or a combined language and another subject at undergraduate level. Future careers may include interpreting, translating, teaching, international aid, law, diplomatic services, journalism or speech and language therapy.

A LEVEL GERMAN

Level 3

Duration: 2 Years

Exam Board: AQA

Entry Requirements: 3 Grade 5s (including English Language and German) and 2 grade 4s.

What will I study? The changing nature of family; The digital world Youth culture: fashion, music and television Festivals and traditions Art and architecture; The cultural life of Berlin past and present Immigration; Integration Racism Germany and the European Union Politics and young people German reunification and its consequences; The critical study of one German film and one book.

How will I be assessed? You will be externally assessed on two written examination papers and an oral examination at the end of year 2.

What will it lead to? You may go onto study languages at university or a combined language and another subject at undergraduate level. Future careers may include interpreting, translating, teaching, international aid, law, diplomatic services, journalism or speech and language therapy.

A LEVEL SPANISH

Level 3

Duration: 2 Years

Exam Board: AQA

Entry Requirements: 3 Grade 5s (including English Language and Spanish) and 2 grade 4s.

What will I study? The course is topic based and the following areas will be studied: Modern and traditional values (family / marriage / the church); Cyberspace; Equal rights; Multiculturalism in Hispanic society; Modern day idols; Spanish regional identity; Cultural heritage (music / art / architecture / literature); Today's youth, tomorrow's citizens; Monarchies and dictatorships; Popular movements; Critical study of one Hispanic film and one book.

How will I be assessed? You will be externally assessed on two written examination papers and an oral examination at the end of year 2.

What will it lead to? You may go onto study languages at university or a combined language and another subject at undergraduate level. Future careers may include interpreting, translating, teaching, international aid, law, diplomatic services, journalism or speech and language therapy.

PERFORMING ARTS

Message from Jo Foster Head of Performing Arts

Are you creative? Do you enjoy performing and/ or recording music? Do you enjoy composing your own music and using sequencing software? Then we have the courses for you. We offer A levels in Music, Theatre Studies and Music Technology.

The creative industries are one of the fastest growing parts of the UK economy. Opting for one of our courses can open the door to a career in performing, composing, acting, directing, recording, teaching, journalism, film and gaming music, session musicianship, musical directorship and so on. It might be that you simply enjoy music; we have lots of students who take our subjects to show that they are well-rounded individuals. Universities view our courses fondly; Russell Group Universities particularly look for students who have A Level Music for their most academic courses such as Medicine.

Students in the recent past have gone on to study Music at The University of Cambridge, LIPA, The University of Sheffield and The University of Manchester. We have strong links with The University of Huddersfield and the majority of our Music Technology applicants choose to study there. Many of our alumni are now professional musicians, including a musical director at the Royal Exchange, Manchester and also qualified secondary music teachers who came back to Great Sankey High School to complete their teacher training with us.

During our two year courses, you will have various enrichment opportunities such as often being cast the lead roles in our school musicals, performing lunchtime concerts and participating in the fabulous and diverse extra curricular offer we have including SATB choirs and smaller instrumental ensembles. Our college students often lead and assist music and Drama staff with rehearsals for the younger students to help gain teaching valuable experience. We have annual trips to concerts and the theatre. We have an annual collaboration with Manchester Camerata which opens more doors concerning contacts for our students.

Our teaching team of specialists have consistently high results spanning beyond the last decade. Our small class sizes mean that tuition is regularly often one to one. We believe that personalised learning is key to develop individual skills in the creative industry. We have A Level examiners on our team so we know our qualifications to fruition; we ultimately understand how to get the best outcomes for our students whilst also offering an enjoyable and productive experience. In addition to our teaching staff, we also have ten instrumental/ vocal part time teachers. Our Headteacher is an advocate of the arts; should you wish to learn an instrument in college, the cost of these lessons is generously subsidised.



A LEVEL MUSIC

Level 3

Duration: 2 Years

Exam Board: AQA

Entry Requirements: 3 Grade 5s (including English Language and Music) and 2 grade 4s.

What will I study? You will study 3 components - 1: Appraising Music 2: Performance & 3: Composition

How will I be assessed? You will be assessed at the end of year 2. Component 1 will be assessed by a two-and-a-half hour examination paper covering listening, analysis and an essay. Component 2 involves a 10-12 minute performance of solo/ensemble/sequencing/multitrack recording. Component 3 involves two compositions, one free and one to brief.

What will it lead to? You may go on to study Music at undergraduate level and future careers may include: Musician; Music Therapist; Private Music Teacher; Secondary School Teacher; Sound Technician; Broadcast Engineer; Community Arts Worker; or Radio Producer.

A LEVEL MUSIC TECHNOLOGY

Level 3

Duration: 2 Years

Exam Board: AQA

Entry Requirements: 3 Grade 5s (including English Language and Music/Music Technology) and 2 grade 4s.

What will I study? You will study 4 components - 1: Technology Based Composition 2: Recording 3: Listening and Analysing and 4: Producing and Analysing

How will I be assessed? You will be assessed on all four components at the end of year 2. For component 1 you will plan and carry out your own multi-track; for component 2 you will use a range of production techniques to create your own original composition; for component 3 you will sit a written examination and component 4 will involve a practical and a written examination.

What will it lead to? You may go on to study Music Technology at undergraduate level and future careers may include: Director of Audio/Visual Events; Audio and Lighting Technician; Music Center Owner and Entrepreneur; Audio Engineer of Audio Visual Specialist.

A LEVEL THEATRE STUDIES

Level 3

Duration: 2 years

Exam Board: Eduqas

Entry Requirements: 3 Grade 5's (including English Language & Maths) Grade 5 and above GCSE Drama preferred

What will I study? You will have the opportunity to realise three different performances. In Component 1 students participate in the creation, development and performance of a piece of theatre based on a reinterpretation of an extract from a text in the style of an influential theatre practitioner or company.

Component 2 includes a visit from an external examiner who will be presented with TWO practical pieces; firstly, a devised piece using the techniques and working methods of either an influential theatre practitioner or company (a different practitioner or company to that chosen for Component 1) and secondly students perform an extract from a text in a different style chosen by the student themselves.

Component 3 Text in Performance is a written exam in which students respond to 3 significant theatre texts that will have been explored practically throughout the course.

How will I be assessed? Component 1: Theatre Workshop is internally assessed and externally moderated in year one. Component 2: Text in Action is assessed in year two by a visiting examiner and Component 3: Text in Performance is a written exam at the end of year two.

What will it lead to? What will it lead to? You may go on to study Drama at undergraduate level. Future careers may include: Actor, Presenter, Choreographer, Musician, Dancer, School Teacher, Sound Engineer, Lighting Engineer, Theatre Director, Community Arts Worker, Casting Manager, Broadcaster, Writer, Producer, Make-up Artist, Costume Designer.

(This course will run subject to staffing and student numbers)

SCIENCE

Message from Emily Dulson Head of Science

If it's sciences and health that you're wanting then we are the department for you. With A levels in Biology, Chemistry and Physics and BTECs in Applied Science and Health and Social Care including the opportunity for work experience in an early years setting, you need look no further.

Our subjects lead to an A to Z of careers ranging from Analytical Chemist, Biochemist, Clinical Pharmacologist, Dentist, Engineer, Forensic Scientist all the way through to Zoologist!

Over the last few years we have had students go on to study Biomedical Science, Forensics Science, Aeronautical Engineering, Early Childhood Studies, Engineering and Physical Sciences, Meteorology and Climate Science, Genetics, Occupational Therapy, Children's Nursing, marine Biology Zoology as well as Medicine and Veterinary Medicine. We frequently have students attend several summer schools at universities where they take part in activities as diverse as designing experiments to be launched into space to examine marine invertebrates and their responses to environmental stressors.

Each year we are able to run some excellent enrichment activities such as lecture visits to hear some of the best scientists working at the cutting edge of their specialisms including Prof. Robert Winston, Prof Andrea Sella, Prof Richard Dawkins, Prof Dame Nancy Rothwell, Dr Helen Czerski and Dr Maggie Aderin-Pocock to name a few. We are currently planning a trip to CERN in Switzerland as well as the possibility of trips further afield with Operation Wallacea as an introduction to conservation and biological field research.

Teachers in our department strive to make learning stimulating, encouraging students to push themselves further stretching both their ability and self belief.



A LEVEL BIOLOGY

Level 3

Duration: 2 Years

Exam Board: AQA

Entry Requirements: A grade 6 in Biology at GCSE or 7 on the combined GCSE course; 3 Grade 5s (including English Language) and 2 grade 4s.

What will I study? Biological Molecules; Organisms Exchange Substances With Their Environment; Genetic Information, Variation And Relationships Between Organisms; Energy Transfers In And Between Organisms; Organisms Respond To Changes In Their Internal And External Environments; Genetics, Populations And Ecosystems; And The Control Of Gene Expression.

How will I be assessed? Practical assessments have been divided into those that can be assessed in written examinations and those that can only be directly assessed whilst students are carrying out experiments. A level grades will be based only on marks from written examinations (3 papers sat at the end of the second year). A separate endorsement of practical skills will be taken alongside the A level. This will be assessed by teachers and will be based on direct observation of students' competency in a range of skills.

What will it lead to? You may go on to study Biology or a related course at university and future careers may include Medicine, Veterinary Medicine, Dentistry, Biomedical Science, Zoology or Teaching.

A LEVEL CHEMISTRY

Level 3

Duration: 2 Years

Exam Board: AQA

Entry Requirements: A grade 6 in Chemistry at GCSE or 7 on the combined GCSE course; 3 Grade 5s (including English Language) and 2 grade 4s.

What will I study? Students will study Physical Chemistry, Inorganic Chemistry and Organic Chemistry.

How will I be assessed? Practical assessments have been divided into those that can be assessed in written examinations and those that can only be directly assessed whilst students are carrying out experiments. A level grades will be based only on marks from written examinations (3 papers sat at the end of the second year). A separate endorsement of practical skills will be taken alongside the A level. This will be assessed by teachers and will be based on direct observation of students' competency in a range of skills.

What will it lead to? You may go on to study Chemistry or a related course at university and future careers may include Analytical Chemist; Chemical Engineer; Healthcare Scientist; Clinical Biochemistry; Forensic Scientist; Nanotechnologist; Pharmacologist; Research Scientist or Toxicologist.

A LEVEL PHYSICS

Level 3

Duration: 2 Years

Exam Board: AQA

Entry Requirements: Grade 6 in Physics and Mathematics at GCSE or a grade 7 in the combined course; 3 Grade 5s (including English Language) and 2 grade 4s.

What will I study? Particles and Radiation; Waves; Mechanics and Materials; Electricity; Further Mechanics and Thermal Physics; Fields and Their Consequences; Nuclear Physics; Turning Points in Physics; Measurements and Their Errors.

How will I be assessed? You will be assessed by three written examination papers which are externally assessed. Each paper lasts two hours and is sat at the end of the second year.

What will it lead to? You may go on to study Physics or a related course at university or alternatively secure a higher apprenticeship. Future careers may include Geophysicist; Field Seismologist; Metallurgist; Nanotechnologist; Radiation Protection Practitioner; Research Scientist; Engineer; Lecturer or Teacher.

BTEC EXTENDED CERTIFICATE IN **APPLIED SCIENCE**

(Equivalent of 1 A Level)

Level 3

Duration: 2 Years

Exam Board: Pearson

Entry Requirements: 5 GCSE grades 9-4 including a grade 4 in English Language.

What will I study? Mandatory units include Principles and Applications of Science; Practical Scientific Procedures and Scientific Investigation Skills.

How will I be assessed? You will be assessed by a mixture of internally assessed coursework and externally assessed examination.

What will it lead to? You may go on to study a science course at university or secure a higher apprenticeship. Careers may include work as a Forensic Technician; Pharmacy Technician; Laboratory Worker of Teacher.

BTEC EXTENDED CERTIFICATE IN **HEALTH AND SOCIAL CARE**

(Equivalent of 1 A Level)

Level 3

Duration: 2 Years

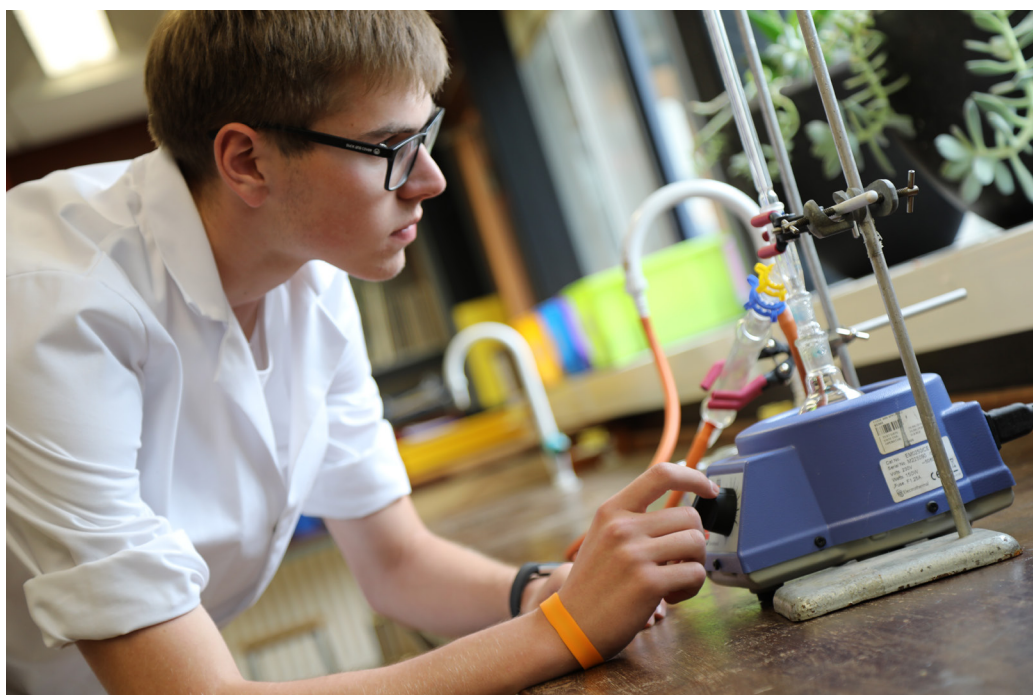
Exam Board: Pearson

Entry Requirements: 5 GCSE grades 9-4 including a grade 4 in English Language.

What will I study? Human Lifespan Development, Meeting Individual Care Needs; Working in Health and Social Care; Physiological Disorders and their Care.

How will I be assessed? You will undertake 50 hours of placement and you will be assessed by a mixture of internally assessed coursework and externally assessed examination.

What will it lead to? Future careers may include Nursing; Social Work; Teaching; Physiotherapy; Midwifery.





SOCIAL SCIENCES & LAW

Message from Sof Ben Ali Head of Social Sciences & Law



Social Science is the fascinating field of science that looks at understanding and explaining how we as people act - on a small scale as individuals and our inter-relationships or on a larger scale looking at institutions and societies. Psychology at Barrow Hall College builds on our excellent reputation as one of the biggest centres nationally to do GCSE, providing a solid foundation of knowledge and expertise. Our Psychology classes are engaging, support discussion and give you expert guidance from experienced staff who are A-Level examiners. Sociology classes will provide rich discussions and understanding about institutions such as family, education and the wider world around us, again by expert examiners. Criminology provides synoptic opportunities to link all 3 disciplines, with a focus on the fascinating study of crime, its causes, impact and solutions. Social Sciences can assist informing choices to future related pathways.

As a department we encourage constant exploration and reading around the topic (and watching many documentaries) as part of studying and immersing yourself in the discipline. This is promoted further in the social science enrichment club.

We provide extra-curricular experiences such as Cambridge HE+ Programme Masterclasses, guest speakers from Social science professions as well as extra-curricular trips such as to London to visit places of Social Science interest like the Freud Museum, Clink Prison and the Jack the Ripper tour. In addition we provide assistance and guidance with work experience in related fields should you wish to pursue social science for executive shadowing.

Law students will benefit from the super-curricular enrichment activities on the Pre-Law Aspiring Professionals programme including an opportunity to take part in the National Bar Mock Trial Competition, a residential visit to London where the group visit Parliament, The Royal Courts of Justice, UK Supreme Court and The Central Criminal Court (The Old Bailey). This is in addition to local court visits and careers talks from Barristers and Solicitors. Students who study Law at BHC go on to amazing things having studied Law or related subjects at prestigious universities including Oxbridge, Durham, Bristol and King's College London and London School of Economics. The subject consistently achieves outstanding results with A*-B grades reaching 75% and A*-C 100%.

We have a strong pastoral focus offering bespoke guidance from a year 12 and 13 Social Science tutor providing a strong sense of faculty. We proudly celebrate our many successes and keep in touch with many alumni who have gone on to Social Science University courses as well as those who have pursued careers in the field.

If you have an inquisitive mind and a thirst for knowledge and understanding of people and the world around us - then a Social science is for you - or better yet a combination of all three!

A LEVEL PSYCHOLOGY

Level 3

Duration: 2 Years

Exam Board: AQA

Entry Requirements: 3 Grade 5s (including English Language) and 2 grade 4s. If you have studied Psychology at GCSE we would be looking for you to have achieved a grade 5 or above.

What will I study? Social Influence, Memory, Attachment and Psychopathology, Approaches in Psychology, Biopsychology, Research Methods, Issues and Debates in Psychology, Gender, Schizophrenia and Aggression.

How will I be assessed? You will sit three externally assessed examination papers at the end of year 2.

What will it lead to? You may go on to study Psychology at undergraduate level and future careers may include Clinical Psychologist; Counselling Psychologist; Educational Psychologist; Forensic Psychologist; Health Psychologist; High Intensity Therapist; Occupational Psychologist; Mental Health Worker; Psychological Well-being Practitioner; Sports and Exercise Psychologist; or Teacher.

A LEVEL SOCIOLOGY

Level 3

Duration: 2 Years

Exam Board: AQA

Entry Requirements: 3 Grade 5s (including English Language) and 2 grade 4s.

What will I study? Education, Methods in Context, Theory and Methods, Families and Households, Beliefs in Society, Crime and Deviance.

How will I be assessed? You will be assessed by three externally assessed examination papers at the end of year 2.

What will it lead to? Future careers may include Community Development Worker, Family Support Worker, International Aid Development Worker, Social Researcher, Teacher or Lecturer.

A LEVEL LAW

Level 3

Duration: 2 Years

Exam Board: AQA

Entry Requirements: 3 Grade 5s (including English Language) and 2 grade 4s.

What will I study? You will learn how the English Legal System works and 3 substantive areas of law: Criminal law, Law of Tort, and Contract Law.

How will I be assessed? By three externally assessed examinations at the end of the second year of the course. These exams will consist of a mixture of multiple choice questions, essays and problem based scenario questions requiring application of the law.

What will it lead to? Law is well respected by universities and employers so it opens up to a wide range of opportunities. You may go to university or undertake a legal apprenticeship and work in the legal profession as a barrister, solicitor or legal executive. You may also go into politics, work for the police or even teach.

(This course will run subject to staffing and student numbers)

LEVEL 3 APPLIED DIPLOMA IN CRIMINOLOGY

Level 3

Duration: 2 Years

Exam Board: Pearson

Entry Requirements: 5 GCSE grades 9-4 including a grade 4 in English Language.

What will I study? Criminal Activity and Reporting; The Media and its Role in Creating Panic; Campaign for Change; Crime Scene Analysis; Courtroom Evidence; Role of CPS; Law Making; Prison and Agencies of Social Control.

How will I be assessed? Two externally assessed examinations of 90 minutes each as an E-Exam and two internally assessed pieces of work.

What will it lead to? You may go on to study Criminology or a related course at university. Future careers may include Advice Worker, Community Development Worker, Detective, Lecturer or Teacher, Policy Officer, Prison Officer, Probation Officer or Social Researcher.

SPORTS

Message from Stu Garry Head of Sport

If sport, physical fitness and the public services are your passion, look no further than the PE department at Barrow Hall College.

Our team is made up of enthusiastic and passionate teachers who are determined to bring out your full potential.

The department facilitates opportunities for students to complete BTECs in both Sport and Public Services, with units selected to develop a broad range of knowledge, giving you the best opportunities for future progression.

You will have the chance to be assessed both theoretically and practically demonstrating your many talents.

We are proud of our students' recent achievements with many going on to study at university, joining the uniformed services and others excelling within the sport and leisure industry.

Students have access to state of the art facilities with our 3G and new sports hall. As a department we thrive on providing extra-curricular opportunities through sports teams, trips and coaching opportunities.

As a department we passionately understand the importance of both sport and the uniformed services held within society and would welcome the opportunity to further develop your passion, knowledge and understanding in these areas.



BTEC SPORT

Level 3

Duration: 2 Years

Exam Board: Pearson

Entry Requirements: 5 GCSE grades 9-4 including a grade 4 in English Language.

What will I study? Mandatory units include Anatomy and Physiology, Fitness Training and Programming for Health and Sport and Well-being. Optional units will be chosen to best suit the needs of our students.

How will I be assessed? A mixture of internally assessed coursework and externally assessed examination.

What will it lead to? You may go on to study a sport related degree at university and future careers may include Sports Coach, Nutritionist, Physiotherapist, Fitness Centre Manager or Teacher.



How to Apply

- 1 Attend Open Evening Thursday 3rd November
- 2 Online applications go live via the GSHS website on Thursday 3rd November
- 3 Opportunity to attend College Experience Day, Friday 11th November
- 4 Apply online by Friday 16th December to have an interview in January
- 5 Attend open morning for first informal guidance interview Saturday 21st January 2023
- 6 Apply online by Friday 27th January to have an interview in April
- 7 Second interviews Thursday 20th April
- 8 You will receive a conditional offer letter from us shortly after interview
- 9 Opportunity to attend a range of pre- college events and activities ran by college tutors and the student leadership team
- 10 Sit your GCSE exams
- 11 Attend Barrow Hall College Transition day Thursday 6th July
- 12 You will receive a letter inviting you to your final guidance interview which will take place on GCSE results day
- 13 You will enrol and join us in September!



