



PROSPECTUS
2026



Contents

- 4. Welcome to Barrow Hall College
- 6. Applying for a place at Barrow Hall College
- 7. Reasons to choose Barrow Hall College
- 8. Facilities
- 10. Student Investment
- 12. Why we chose Barrow Hall College
- 14. A day in the life of a Year 12 student
- 17. Support
- 18. Student Leadership
- 20. Executive Shadowing
- 21. Aspiring Professionals Programme
- 24. High Achievers Programme
- 26. Enrichment and Trips
- 28. Destinations
- 31. Travelling to Barrow Hall College
- 32. Careers Training Zone Programme
- 33. Pathways and Entry Requirements
- 35. Course Directory
- 60. Omega Multi-Academy Trust

Welcome to Barrow Hall College



Message from Helen Stones, Director of Key Stage 5

At Barrow Hall College, we are deeply committed to helping every student achieve their full potential. We take great pride in getting to know each student personally. Here, no one is just a number.

Understanding how students learn best and what motivates them is central to our approach. The strong relationships between staff and students create a supportive college community where everyone is valued and can truly flourish. We know choosing the right college and courses can feel daunting, but we're here to make that journey as smooth as possible. Our prospectus, Open Evening, and transition events are designed to help students thoroughly explore their options. Our dedicated Heads of Year and experienced College Tutors are on hand to offer expert advice and guidance every step of the way.

Our investment in students goes beyond the classroom. Enrichment opportunities, including the Aspiring Professionals Programme, High Achievers Programme, and Careers Training Zone, ensure a well-rounded college experience.

I am incredibly proud to lead the team here at Barrow Hall College and look forward to welcoming you in September as we continue to grow and succeed together.

Message from the College President

Most people know this place as Barrow Hall College. I know it as the place where dreams start to become reality. It might look like a small college from the outside, but once you're here, you realise quickly how much it has to offer. Whether it's the friendly staff or the supportive students, Barrow Hall College is the kind of place you want to be for the next important chapter of your life.

Making the leap from high school to college can feel overwhelming and maybe even a little scary, but Barrow Hall College helps you through it. From the moment you arrive, you're met with a sense of belonging. That's because the staff here genuinely care. They welcome you with open arms, no matter your background, school, or where you're from.

You may be asking yourself what else makes Barrow Hall College different from other colleges? Here, you're not just a number. You're seen. You're heard. You're supported. The staff don't just teach, they believe in us and the dreams that we have for our future. They help us chase our goals and give us the tools to achieve them.

Barrow Hall isn't just a college. It's a community. It's a launchpad. It's where your future begins.



Applying for a place at Barrow Hall College

In the Autumn term of Year 11 students attend open evenings to get an idea of where they would like to enrol in September.

At our Open Evening you will have the opportunity to speak to our staff and students, both past and present, about the different courses on offer and about life at Barrow Hall College.

If you would like to book an informal course discussion as part of your application please contact the college office and we will get back to you before your guidance interview.

Guidance Interviews will begin in the Autumn term and run all the way through to the end of the school year. It is at this guidance interview that our dedicated staff can answer any final questions about our college and your post-16 journey with us.

Applications are now open and you can apply by completing the application form on our website at greatsankey.org/college



October

- Attend our Open Evening
- Research different courses
- Apply online via our website

November

- Book a course discussion
- Attend a Guidance Interview
- Receive your offer letter with confirmation of your subject choices

January

- Attend Subject Experience Sessions

April

- Opportunity to attend a second guidance interview, if requested

May

- Concentrate on your GCSE exams!

July

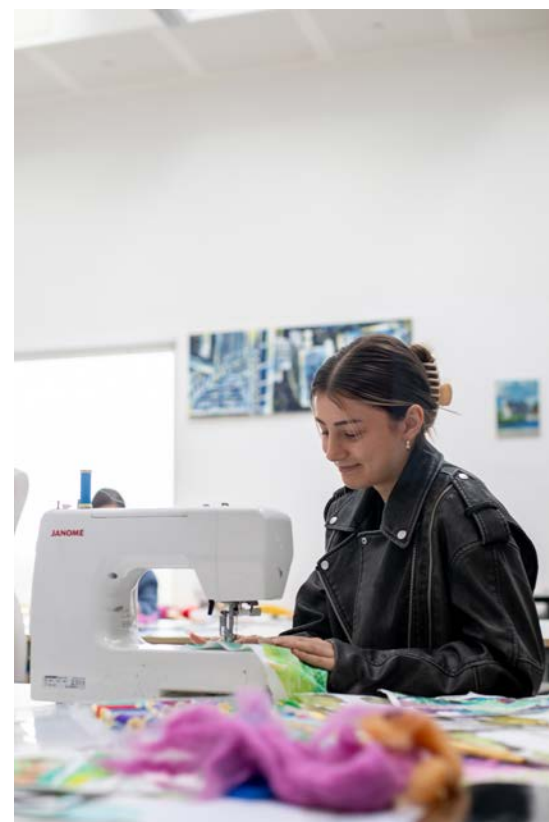
- Join us for our transition day

August

- Enrol on your final course choices

September

- Begin your Barrow Hall College journey!



Reasons to choose Barrow Hall College



Proven Track Record

Each year our students leave Barrow Hall College (BHC) with fantastic results and over 95% secure their first choice or insurance university place, progress to employment or 'higher level apprenticeships.

Outstanding Pastoral Support

At BHC you are a name, not a number! We will get to know you as a person whilst providing the academic and pastoral support you need in order to be successful.

More Teaching

You will receive 5 guided learning hours per subject per week but will also benefit from a large number of study periods to manage your workload.

Specialist 16-18 Teachers and Tutors

Many of our teachers are examiners and senior examiners who mark and write for the exam boards. In addition, as a school based sixth-form we understand how to help you make the transition from school to college life.

Student Leadership

Our Student Leadership Team are central to the success of the college. We have a team of ambassadors who are led by a talented College President. Student voice is very important to us and we pride ourselves in acting upon the suggestions made.

Broad Curriculum & Enrichment Opportunities

With a wide range of courses to choose from BHC will offer you a bespoke study programme on the academic pathway, vocational pathway or a mixed pathway. We invest in our students cultural capital by offering a range of opportunities to enrich your college experience and strengthen your future employability.

Family Environment

Whilst many FE colleges offer support and guidance, at BHC we really will get to know you as an individual in a caring, community atmosphere.

Small Class Sizes

We have an average class size of 12 students across the college. Our students benefit from more specialist subject support from their tutors than in larger FE colleges.

Location

The vast majority of our students are able to walk or cycle to college. Those who need to get public transport usually only have one short bus ride.

Facilities

We invested £8 million into our college building which houses our own facilities such as the cafe and social space, lecture and drama theatre, arts studio, Learning Resource Centre and dedicated BHC science labs.

Careers

You will receive one to one and small group careers education, information, advice and guidance throughout your time at BHC using a dedicated online platform (Unifrog). This is for all, no matter whether your post-18 aspirations are university, apprenticeship or employment bound. Our Carrers Training Zone Programme is designed to fit all our student's needs.

College Hours

The college day (8.20am-14.50pm) means that you will be able to balance your studies with other important aspects of life such as part time work, exercise or driving lessons. College remains open for private study until 4:30pm Mon - Thurs and 4pm on Fridays. The early finish is particularly useful for our elite-athletes.

Facilities

- Café and social area available throughout the day serving breakfast, lunch and snacks
- Performing Arts/Lecture theatre - 100 seat theatre for lectures and events, fitted with theatre lighting and sound equipment. Performing arts space for rehearsal and performance
- Library and silent study area with computer facilities
- Specialist software available throughout the curriculum
- Chromebooks and PCs available for all students
- Microsoft Office 365 for access to all Microsoft software and OneDrive storage
- Dedicated college science labs
- Art Studio - a bright, open space to encourage creativity in our Art & Design and Textiles courses
- Sporting facilities - Floodlit 4G Astro turf pitch, tennis courts, sports hall and gym facilities





Student Investment

At Barrow Hall College, we believe in providing our students with more than just an education; we offer a comprehensive package to ensure you make the most of your time with us. We understand that a fulfilling college experience goes beyond the classroom and we are dedicated to providing a rich, well-rounded and supportive environment for all our students.

Access to Livewire Gym

Your well-being is our priority. To keep you physically and mentally fit, we offer all our students free access to Livewire Gym. Stay healthy, active and take advantage of the superb facilities to maintain a balanced lifestyle throughout your college journey.

Free termly excursions for Student Ambassadors

Become an Ambassador of Barrow Hall College and you'll be rewarded with exciting termly excursions. Explore new horizons, make friends, and create memories that will last a lifetime. As an Ambassador, you will also have the opportunity to represent our college at various events.

Financial contributions towards travel

We offer financial support for public transport to make your daily travel affordable and convenient. You can focus on your studies, knowing that transportation expenses won't be a barrier to your education.

Scholarships for subjects, elite sports and community work

To reward your dedication and excellence in subjects, elite sports and community work, we offer a range of scholarships. These scholarships not only recognise your achievements but also provide financial assistance to help you excel in your chosen areas of interest.



"Attending Barrow Hall College allows me to develop myself in other ways than just academically. This is because you have free access to the Livewire Leisure Centre during your study periods. Having a break from college life to go to the gym is great and allows you to push yourself in other areas in your life."

- Jack, studying English Language, Sport and Sociology



"During my time at Barrow Hall College I was proud to receive the Elite Sports Scholarship. I found it helped to motivate me in my studies whilst achieving my goal of studying in the United States."

- Lucie, studying Sports at Queens University of Charlotte

Why we chose Barrow Hall College



"I previously attended Great Sankey High School but chose to study at another local FE college after my GCSEs. The modern facilities were what initially attracted me. However, I found the long commute and limited options during study periods challenging. I was often stuck at college with little to do and didn't get home until after 5:30 every day. I decided pretty quickly to transfer back to Barrow Hall College and was relieved when they said there were spaces on the courses I wanted to study.

It offers the same high-quality teaching and resources as larger colleges, but with the added benefit of being closer to home and far more convenient. The smaller class sizes have made a real difference; it's much easier to get support from teachers when you need it. Overall, I've enjoyed my time at Barrow Hall far more than at the larger college. It's a fantastic option that I think **many students overlook.**"

- Joe, Year 12, studying Business Studies, Philosophy and Ethics, Maths.

"Initially, I hadn't planned on attending Barrow Hall College, but after applying and coming to the taster day, I was struck by how friendly and welcoming the environment was. Starting lessons felt natural, the relaxed atmosphere, small class sizes, and supportive teachers made it easy to settle in. I never feel afraid to ask for help; the staff are always attentive and ready to support us. On enrolment day, I felt confident that this was the right place for me."

- Tendai, Year 12, studying
Criminology, Psychology,
Applied Science



A day in the life of a Year 12 student

8:00am

Arrive at the college and meet up with my friends in the café where I plan and organise my day over a hot cup of coffee whilst enjoying the quiet morning.

8:20am

Registration: where my form tutor addresses relevant events for the week and we complete activities in PSHE which I can then use effectively in my studying.

8:45am

Period 1 – English Literature is a subject I deeply enjoy, not only because it complements my other A-Level choices, but also because allows me to have varied discussions around novels, plays, and poetry. I particularly value the opportunity to explore different genres in depth and take part in thoughtful conversations with my teachers.

1.15pm

Lunch in the café has a selection of hot and cold meals served by the lovely staff who always put a smile on my face. I also have time to speak to teachers about any questions that I may have from that day.

12:10pm

Period 4: Philosophy and Ethics challenges me to think critically and explore complex ideas, often sparking discussions that even engage my teacher. This subject has not only sharpened my analytical skills but also deepened my understanding of the world.

11:10am

Period 3: Politics is by far my favourite subject! With plenty of relevant debates and discussions surrounding the news or current affairs. Although small, our class is always lively, and I find that I can openly express my views comfortably.

1.45pm

Period 5: Debate is the subject that I had chosen for my enrichment. This allows me to debate issues and topics with a group of people I am not familiar with, ultimately pushing me out of my comfort zone and gives me confidence when speaking in front of a large group of people. I am also completing the Citizenship Award where I help out in KS3 classes, support school pupils with paired reading and act as a peer mentor. This is an amazing experience which I find really rewarding.

2.50pm

End of the collage day, I help out at homework club in the main school and then later in the day, I also participate in my football training in which I do to exercise and to improve my mental health whilst also giving me the chance to hang out with friends outside of school. The early finish to the college day allows lots of students to have a part time job which I know may come in handy in the future!

9:45am

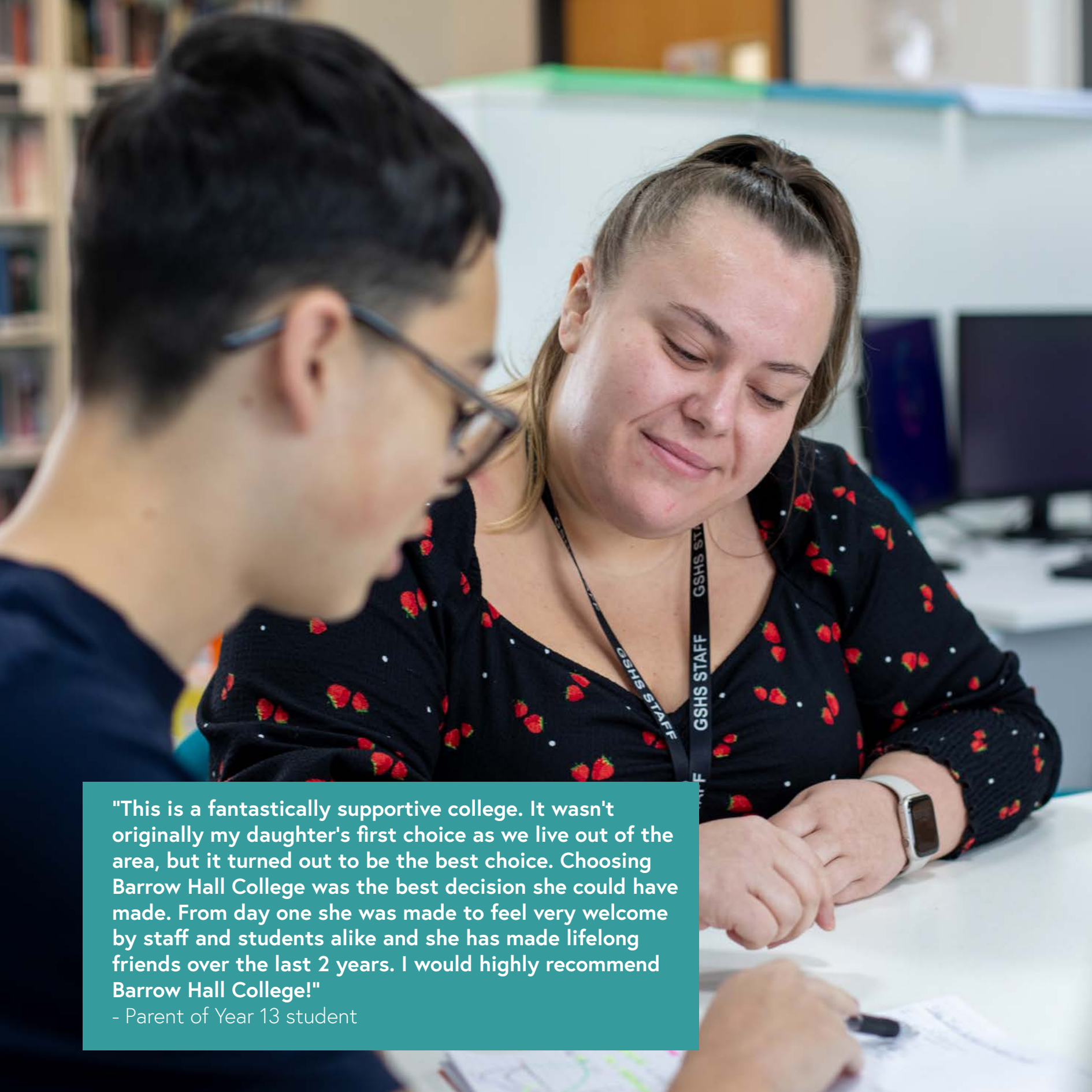
Period 2 – Study Period allows me to catch up with any unfinished tasks such as homework and notes used for revision. This creates an organised mindset and if all this work is completed, then I can socialise with friends or use a free gym pass to live-wire. Having access to the library or a free classroom gives me a calm space to focus.

10:45am

Break lets me catch up with friends in the café and indulge in a variety of drinks and some freshly baked snacks such as pastries or the famous BHC breakfast wraps!

Neve, studying English Literature, Politics and Philosophy and Ethics





"This is a fantastically supportive college. It wasn't originally my daughter's first choice as we live out of the area, but it turned out to be the best choice. Choosing Barrow Hall College was the best decision she could have made. From day one she was made to feel very welcome by staff and students alike and she has made lifelong friends over the last 2 years. I would highly recommend Barrow Hall College!"

- Parent of Year 13 student

Support



We are very proud of the caring environment that exists at Barrow Hall College and believe it is one of many things that makes it a special place to study. We have one central college office for all of your needs as a student at Barrow Hall College (BHC).

We operate an open door policy and can provide a range of support services, whether this is just a brief chat, a counselling referral or support with university and careers advice.

The Tutor Team

You will be linked to a college tutor group and where possible, be placed with a tutor who is a subject specialist in one of your chosen courses. The college tutor will monitor your attendance and progress during your two years at BHC. Your tutor is normally the first person to contact if you are in need of support. They will deliver a comprehensive tutor programme in order to prepare you for your next steps after college whether this is university, apprenticeships or full time work. They will also lead you through the UCAS application process. At BHC, the Tutor Team is one of our greatest strengths as we will get to know you and you will get to know us.

Safeguarding

We are committed to safeguarding and promoting the welfare of students and expects all staff to share this commitment. All college tutors receive comprehensive annual safeguarding training and there are several Deputy Designated Safeguarding Leads working across school and college.

Academic Support

We are committed to providing every student with the opportunity to reach their full potential. All students are assessed every half term within subject areas and progress is tracked and monitored by subject teachers, Heads of Department, college tutors and Heads of Year. Personalised intervention is put in place, where necessary, in order to tackle under-performance.

A summary of progress and attendance is sent home every term and students, parents and carers are invited to several events across the year. These include review days with tutors and progress evenings with subject departments.

Students with Additional Needs

The college offers a supportive environment through our pastoral systems and via our SEND co-ordinator. We have a Health & Wellbeing Mentor and Counsellor who offers a drop-in service.

Support for examinations is available, if you do have additional support requirements.

Equality & Diversity

We believe that everyone is important, has the right to be valued, treated with respect and supported throughout their college journey. Our full policies detailing all our procedures can be found on our website.

Financial Support

The Government provides a 16-19 Bursary fund for students suffering financial difficulties.

The maximum bursary of £1200 a year will be paid to the most vulnerable students; in care, care leavers, young people in receipt of income support (or Universal Credit) and disabled young people in receipt of Disability Living Allowance.

Other discretionary bursary payments are given to students based on individual circumstances. Please contact the college office if you have any questions or require any further information.

Student Leadership

Our Student Leadership Team consists of a small group of incredibly hard-working individuals. Our President leads a team of ambassadors who themselves specialise in different key areas.

Roles within the team include School Link ambassador, Charity Ambassador and Diversity Ambassadors.

The Student Leadership Team are an integral part of our College and represent us in internal and external events such as careers fairs, open evenings and community events.

The voice of our students is represented by the Student Council. This is led by our Student Ambassadors, who meet with students regularly to discuss ideas and opportunities that will benefit the college. Students are instrumental in delivering change at Barrow Hall College and we value the opinions and ideas of our Student Leadership Team greatly.





Executive Shadowing

All Year 12 students have the opportunity to complete an Executive Shadowing placement in a career of their choice.

We expect all students to secure placement relevant to their planned higher education or career pathways. Universities and employers really value these placements and students in the past have shadowed architects, lawyers, doctors and site managers in the UK and abroad.

"For my Executive Shadowing I secured a weeklong placement with Sellafield, working within the Operational Research department. It gave me a valuable insight into what a typical day in the industry looks like, and I'm really thankful for the opportunity.

It's helped me understand what life could be like if I pursue an apprenticeship, and it's also allowed me to develop transferable skills that will be essential for my future. This experience has strengthened my confidence as I prepare to apply for an apprenticeship later this year.."

- Jess, Year 12, studying Chemistry, Maths, Geography



Aspiring Professionals Programme



We understand that it takes more than good grades to stand out from the crowd when applying for competitive university courses or aspiring to join highly competitive career industries. With this in mind we are committed to providing comprehensive subject specific enrichment opportunities and support packages.

This academic year we are offering the following programmes:

Pre-Med/Dentistry/Vet Med

Future Doctors, Dentists and Vets are offered a great deal of support in ensuring that their applications stand out. This includes:

- Bespoke guidance in preparing UCAS personal statements
- Application support and participation in national programmes such as Nuffield research placement for 4-6 weeks in summer of year 12
- Advice and guidance for the UK Clinical Aptitude Test (UKCAT) and the Biomedical Admissions Test (BMAT)
- Mock interviews conducted by practicing medics, veterinarians and medical school professors
- Participation in our executive shadowing programme securing volunteer placements in hospitals, GP surgeries and veterinary practices
- Undertaking EPQ as part of curriculum enrichment

Pre-Law

A career in the legal profession is a common aspiration, although supply of law graduates outstrips demand meaning that only the best of the best achieve their dreams of becoming a practicing solicitor or barrister. All Law applicants have following opportunities:

- Bespoke guidance in preparing UCAS personal statements
- Taking part in the Bar Mock Trial competition
- Visit local magistrates and crown courts
- Advice and guidance for the Law National Aptitude Test (LNAT)
- Networking with our Alumni

Pre-Teaching

Students wishing to follow a career in teaching will benefit from specific support including:

- Bespoke guidance in preparing UCAS personal statements
- Pre-teaching course as part of curriculum enrichment
- Mentoring of school students at Great Sankey High School and Omega Multi-Academy Trust schools
- Working alongside trainee teachers and attending teacher training conferences
- Participation in our executive shadowing programme securing volunteer placements in education settings
- Joining our alumni network in the future

Pre-STEM

Students who wish to follow a Science, Technology, Engineering and/or Maths Post-18 route will benefit from provision including the following:

- Bespoke guidance in preparing UCAS personal statements
- Undertake the Silver CREST award run by the British Science Association as part of curriculum enrichment
- Participation in our executive shadowing programme securing volunteer placements in STEM settings
- Application support and participation in national programmes such as Nuffield research placement for 4-6 weeks in summer of Year 12
- Advice and guidance for the admissions tests such as the STEP, MAT and NSAA.
- Complete in the National Lego Education competition
- Compete in the UKMT Senior challenge



"During my Nuffield research placement, I worked on a project about supervised machine learning and data science. This experience provided me with a wider understanding of programming and artificial intelligence, as well as how it can be used in the world of cyber security. It also aided me in developing vital skills that I will need within the real world as well as in my own academic studies."

- Mustafa, studying Maths, Physics and Computer Science

Nuffield Research Placements are funded by the Nuffield Foundation and delivered by STEM Learning. They are engaging, hands-on research projects, where students have the opportunity to make a meaningful contribution towards the work of a host organisation.

These placements are a fantastic opportunity for students to apply skills and knowledge learned in college and work alongside researchers and industry professionals to develop subject understanding alongside research and quantitative skills to expand career prospects and enhance UCAS personal statements and applications to university. An independent evaluation has shown Nuffield Research Placements increase access to university courses in STEM subjects.



Pre-Arts

As Art subjects are increasing in popularity due to our outstanding facilities, we have introduced another Aspiring Professionals Programme supporting our students in the following ways:

- Bespoke guidance in preparing UCAS personal statements and foundation application
- Participation in our executive shadowing programme securing volunteer placements in the Arts
- Bespoke post 18 portfolio preparation for general and specific courses
- Mock interviews conducted by practicing creatives.
- University and Foundation talks with Carmel College
- Gold Arts Award. Awarded through Trinity College. 16 UCAS points available
- Advice and guidance for university open days, art events and exhibitions
- Portfolio workshops and career pathways
- A bespoke Art Studio with daily open access

Pre-Business/Economics

Students wishing to follow a career in this field will benefit from specific support including:

- Bespoke guidance in preparing UCAS personal statements
- Taking part in morning Business and Economics revision lessons and discussions around pertinent topics and current affairs.
- Bespoke personal statement examples that demonstrate further reading in their desired field and evidence of MOOC's completed.
- Mock interviews conducted with existing business professionals in areas of the business that the student is aspiring.
- Business Breakfast attendance with business leaders from around the region
- Attending speeches in college (and virtually) held by leaders within their fields. This started last academic year.
- Production of a research paper of their chosen area such as - cost of living crisis and possible solutions, global inequality, etc.
- Submitting an application to 'The Young Economist of The Year' Award - written paper that is submitted

Pre-Social Science

Social Science courses at Barrow Hall College are incredibly popular and many of our students go on to study these courses at university. Our new Aspiring Professionals Programme supports these students in the following ways:

- Bespoke guidance in preparing UCAS personal statements
- Participation in our executive shadowing programme securing volunteer placements in Social Science settings
- Advice and guidance for university open days and Social Science cultural capital opportunities
- Subscription access to 'The Economist' app
- Networking with our Alumni
- Invited to guest speakers in the field - Educational Psychologist, Clinical Psychologist, Probation Worker and more
- Opportunity to attend a two day Social Science college trip to London



"My experience with the Aspiring Professional Programme and Burtonwood Brewery has been incredible. Throughout the programme, I've learned so much about

the inner workings of a business and the dedication required for success. It's given me a real insight into the working world and helped me develop valuable transferable skills that will support my future career plans, especially as I prepare to apply for an apprenticeship later this year."

- Josh, Year 13 studying English Language, Business Studies, Maths.



High Achievers Programme

Members of the High Achievers Programme at Barrow Hall College have achieved at least 7 Grades 7-9 at GCSE. The programme offers a comprehensive package of support for those thinking of applying to Oxbridge or other top universities and those applying for competitive courses such as Medicine, Veterinary Medicine or Dentistry.

Students will have the opportunity to take part in extension classes, master classes and workshops at the Northwest HE+ hub college and at Oxford and Cambridge as well as undertaking a themed research project in their subject of choice. They will also enjoy a residential visit to the University of Cambridge (Sidney Sussex College) where they gain real insight into what studying and living there would be like.

There are 3 modules to the programme.

Module 1: Preparing for University

Students will attend information, advice and guidance sessions which aim to help students prepare for university decisions and applications, as well as university life and learning methods.

Module 2: Learning beyond the curriculum

Students will attend a variety of lectures delivered by PhD students from the University of Cambridge. There will also be opportunities to take part in mock seminar sessions, led by a current student from the university of Cambridge

Module 3: HE+ project

Students will have an opportunity to participate in the HE+ project and develop an academic research poster for entry into the National HE+ project competition. As part of this, students will receive written feedback from a student at the University of Cambridge. The overall goal of the project is to encourage and prepare more academically-able students to make competitive applications to top universities, including the University of Cambridge.


Competitive Course UCAS Support

Our students are encouraged to go on a journey of discovery to aid their applications to the top universities. They use subject discovery lists to guide their wider reading and research; apply for summer schools both in the UK and abroad; engage in volunteering alongside their Executive Shadowing and they take every opportunity that comes their way to enhance their applications. Our dedicated tutor team provides excellent advice and guidance throughout the application process including one-to-one personal statement support and expertly written references which can make all the difference to gaining a place on a competitive course.

Drawing from a range of industry, professional and alumni contacts we put our students through their paces in mock interviews. Past students have benefited from the advice and guidance from University Professors, practicing barristers who graduated from Oxford and past students currently studying at some of the top universities in the UK.

Recent High Achievers

Student	A level grades	Destination
Mollie	A* A A B	Liverpool - Medicine
Meg	A A A	Nottingham - Veterinary Medicine
Jacob	A A A A A	Sheffield - Chemical Engineering
Heather	A* A* A* A* A	Apprenticeship with Sellafield
Miriam	A A A	Dental Surgery Plymouth
Jack	A* A* A* A*	Warwick - Discrete Mathematics
Kathy	A* A* A	Manchester - Biochemistry
Jack	A* A A A	Apprenticeship at LAC Flying School
Laura	A* A A	Liverpool - English Literature and History
Natalie	A A A	Manchester - Pharmacy
Harry	A* A A B	Apprenticeship at JCB
Kinvara	A* A A B	Leeds - Chemistry
Prabhnoor	A A A	Liverpool John Moores - Pharmacy



All my subject teachers have been incredibly supportive and generous with their time, offering extra help whenever needed. Their genuine passion for teaching creates a positive and encouraging atmosphere. With small class sizes, I feel confident asking questions and engaging in meaningful discussions without fear of judgement. The flexible timetable allows me to study in a way that suits me best, and the resources for each subject are always accessible, making it easy to balance study with other commitments. I've already received fantastic support preparing for the UCAT and am currently finalising my UCAS application for Medicine, ready to meet the early deadline.

- Anna, Year 13 studying Psychology, Chemistry and Biology.

Enrichment & Trips

At Barrow Hall College, enrichment takes place every Wednesday afternoon where students take part in activities such as:

- Citizenship Award
- Culture Study
- Creative Performance
- Debate Club
- Digital Media Production
- Extended Project Qualification
- Pre-teaching
- Physical Wellbeing
- Silver and Gold DofE
- Sports Leadership
- TED Talks
- Wellbeing Wednesday

We also encourage students to take part in many more opportunities with over 40 different activities in our Enrichment Plus offer including:

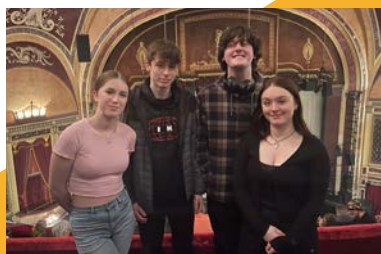
- Art Clinic
- Cooking skills
- Dance Club
- Drama Club
- Holiday French and Spanish
- Meditation
- Mindfulness
- Music Clubs
- Silver CREST
- Sports Clubs
- STEM Club
- Yoga
- Yarn Lovers Club


Trips and visits

As well as expanding our Enrichment and Enrichment Plus offer, our students have the opportunity to go on many trips and visits throughout their time with us, allowing them to fully immerse themselves in their subject. Trips range from day trips to the theatre or to the Houses of Parliament, to a few days in Wales, or to longer trips abroad to CERN, Iceland, Paris and Berlin.

Trip planned for next year include;

- Art and Design trip to Paris
- Biology/Applied Science field trip to Wales
- Physics/Chemistry/Maths trip to CERN
- Social Sciences trip to Vienna
- MFL/History/Politics trip to Berlin
- Politics trip to Parliament London
- English Literature trip to Stratford-Upon-Avon
- Geography field trip to Wales
- Theatre Studies/Music trip to Liverpool Empire





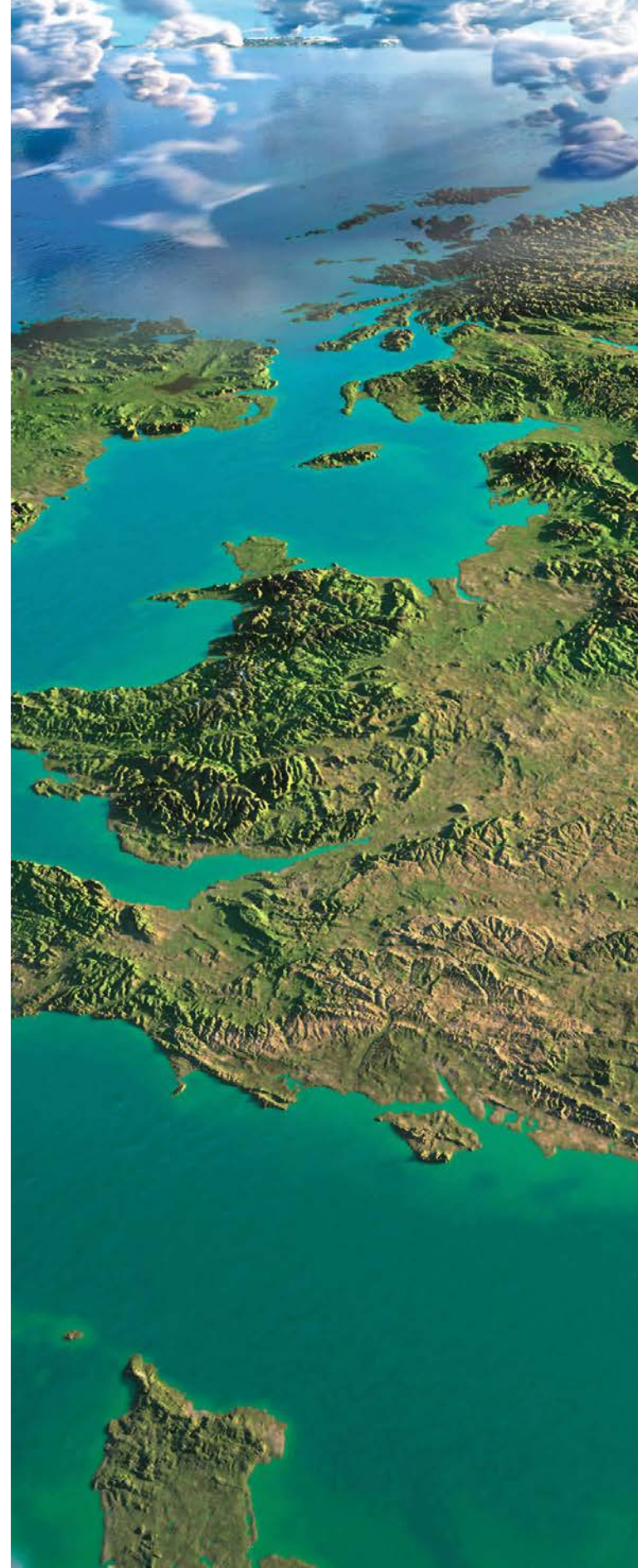
"The community feeling that you get as a student here is great. I don't think you'd get that at a larger FE college. There are lots of different enrichment opportunities to get involved in on Wednesday afternoons and im really looking forward to going on Geography field trips!"

- Natalie, studying Geography, Biology and Chemistry

Destinations

Our students achieve highly and go on to study at universities and begin apprenticeships all over the UK.

- Irma (A A B) Medicine - University of Sunderland
- Abi (A* A* B B) Psychology - University of Manchester
- Kamdi (A* A B) Law - University of Nottingham
- Mustafa (A* B B) Computer Science - University of Liverpool
- Katie (A* A C C) Nutrition and Health - Edge Hill University
- Tom (A A B) Apprenticeship with Cinch
- Chris (A A B) Physiotherapy - Manchester Metropolitan University
- Alison (A B E) Violin - Royal Northern College of Music
- Ruby (Merit, B, D) Professional Policing - Edge Hill University
- Lewis (Merit, Distinction, D) Media - Edge Hill University
- Hamnah (Pass, Pass, Distinction) AI and Data Science - Manchester Metropolitan University
- Charley (Distinction*, B, B) Apprenticeship Sunbelt Rentals
- Holly (A, C, C) Environmental Management - Salford University
- Sophie (Distinction, B, B) Paramedic Science - University of Brighton



"My experience at Barrow Hall College was marked by exceptional support and dedication from my teachers. Every step of the way, they provided guidance and encouragement, and I truly believe I wouldn't have made it to medical school without them.

One of the most valuable opportunities I had was the chance to start a MedSoc project at college. This experience helped me develop important skills that proved invaluable during my medical school interviews and ultimately contributed to my success in securing offers. My teachers regularly went above and beyond, giving up their time to mark extra papers and run booster sessions, which I found incredibly helpful. Their commitment played a key role in helping me achieve the grades I needed.

I'm genuinely grateful to Barrow Hall College for the support and opportunities that helped shape my journey."

- Irma, studying Medicine at University of Sunderland



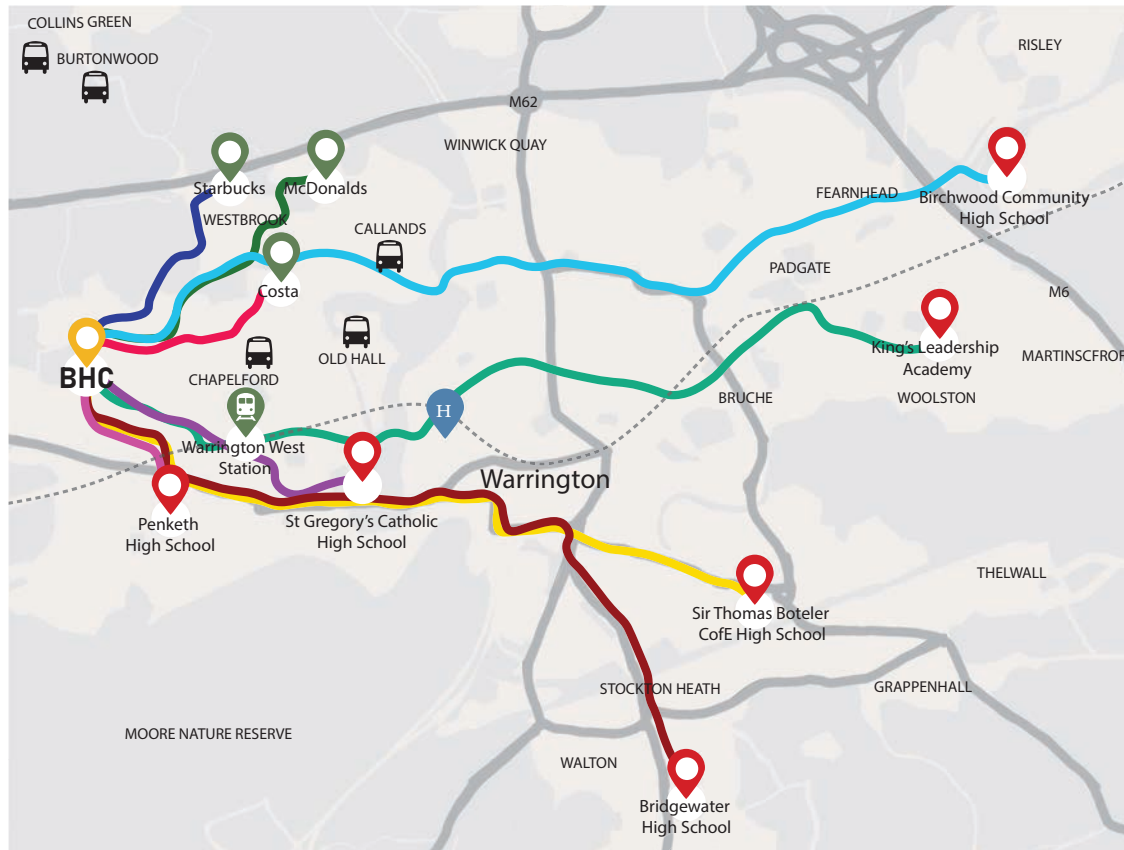


"I can't believe how different Barrow Hall College is from high school. I attended Great Sankey and although I have some of the same teachers that I had last year, the lessons are very different.

From the small class sizes, one to one teacher support, the amazing pastoral team and extra-curricular programmes I don't think I could have asked for anything else."

- Peter, studying English Literature, Law and Geography

Travelling to Barrow Hall College



Cycling

The College actively encourages cycling and provides covered bicycle storage and a limited number of helmet lockers.



Car

The Livewire facility car park can be used for parking and a number of suggested drop-off and pick up points located within a reasonable walking distance can be used.



Bus

College bus routes include services through Callands, Chapel Ford, Old Hall, Collins Green and Burtonwood. More information about this can be found on the Great Sankey High School website.



Train

The College is approximately a 20 minute walk and 5 minute cycle from Warrington West Train Station.

The College makes a contribution towards public transport costs for all students.

Careers Training Zone Programme

Our careers training zone programme is designed to fit the needs of all Barrow Hall College students and aims to support them on a pathway towards either university or an apprenticeship.

Year 12, students will select either our Apprenticeship or University programme and over the course of their two years with us, students will then participate in a range of career boosting activities, designed to train and prepare them for their eventual chosen pathway.

Students are welcome to change pathways over the course of their studies and will benefit from a range of contact points with Liverpool and Edgehill University, and/or support from external apprenticeship organisations.

A selection of our experiences is provided below, please note this list is not exhaustive.

University training pathway

- Access to the BHC University Passport
- Two University experience days with a bespoke programme provided for BHC students
- A unique HPA programme for students applying for competitive courses/Oxbridge Attendance to the UCAS convention
- Student talks on the application process
- Personalised support from tutors with personal statements, references and applications
- An open reference process with students involved every step of the way including sending their own application off with their Head of Year
- A parent/carer UCAS guidance Evening
- A parent/carer UCAS Finance guidance Evening

Apprenticeship training pathway

- Access to the BHC Apprenticeship Passport
- UNIFROG support to create letters of application and a CV
- Attendance to a careers fair
- Attendance to an apprenticeship fair
- Annual trip to a local employer for example Amazon PLC
- Guest speakers from local companies and ex-students
- Application support from external apprenticeship organisations
- Mock interviews with local employers
- One to one appointment with our on-site careers specialist
- A parent/carer apprenticeship guidance evening



Edge Hill
University



Pathways & Entry Requirements

Despite our size, we offer a wide range of courses to suit all ambitions. Students follow a personalised programme of study and the entry requirements detailed below offer a guide to the level of course that is appropriate. Some individual subjects may also ask for more specific entry requirements. Our experienced Heads of Year and Tutors will guide your course choices, to ensure that you choose the right courses for your aspirations.

Academic Pathway

To study A-Level subjects, students will need to achieve a minimum of 3 grade 5s and 2 grade 4s at GCSE including Maths and English Language.

Vocational Pathway

To study BTEC, AAQ or Diploma subjects, students will need to achieve a minimum of 5 grade 4s at GCSE including Maths and English Language.

Mixed Academic & Vocational Pathway

To study a mixed pathway of A-Level and vocational subjects, students will need to achieve a minimum of 5 grade 4s at GCSE including Maths and English Language.





"I love how the Creative Arts Studio is specifically designed for my subject. The space is always available from 7.30am to 4.30pm when I need to use it in my study periods. It also has fantastic natural light and a great view out of the window providing a ideal learning space for creativity."

- Bea, studying Textiles, Photography and BTEC Applied Science

Course Directory



Art

- A-Level Art
- A-Level Textiles
- A-Level Photography
- A-Level Graphic Design

Business & Computing

- A-Level Business Studies
- BTEC Extended Certificate in Business
- A-Level Economics
- A-Level Computer Science
- AAQ in IT: Data Analytics

Design & Technology

- AAQ in Food Science and Nutrition
- A-Level Product Design

English

- A-Level English Language
- A-Level English Literature
- BTEC Extended Certificate in Creative Media

Geography

- A-Level Geography

History

- A-Level History
- A-Level Politics

Mathematics

- A-Level Mathematics
- A-Level Further Mathematics
- Core Mathematics

Modern Foreign Language

- A-Level French
- A-Level Spanish

Performing Arts

- A-Level Music
- A-Level Music Technology
- A-Level Theatre Studies

Philosophy & Ethics

- A-Level Philosophy & Ethics

Physical Education

- BTEC Extended Certificate in Sport

Science

- A-Level Biology
- A-Level Chemistry
- A-Level Physics
- AAQ in Applied Science
- AAQ in Health & Social Care

Social Science

- A-Level Law
- A-Level Psychology
- A-Level Sociology
- Level 3 Applied Diploma in Criminology

ART

Message from Lorna Philcock Head of Art



Interested in a career within the creative industry? Then we have the courses for you. Creative industries are one of the fastest growing parts of the UK economy. Opting for one of our courses can open the door to a career in architecture, games design, art therapy, illustration, web design, interior design, photography, fashion design, fashion purchasing, advertising and much more.

Students in the past have gone on to study Women's Fashion Design, History of Art, Fashion Styling and Promotions, Photography, Fine Art, Architecture, Make-up Design and Special Effects, Teacher Training, Fashion Buying and Merchandising, Illustration, Surface Pattern Design and Graphic Design.

During our two-year courses students will have various enrichment opportunities such as gallery visits and a more in-depth cultural visit. We also have our workshop weekend with returning visiting artist Ian Murphy and we are currently researching other artists to run a second workshop. Towards the latter half of our course, we invite past students in to discuss their career path while delivering a practical workshop within their specialised area.

At Barrow Hall College while we do expect you to buy some of your own equipment, we supply more than most other colleges do, ensuring you are fully prepared for every lesson and your personal progression is not determined by your finances. Our teaching team is dedicated to helping you reach your full potential, discovering who you are with the creative industry and guiding you to your future career with confidence and self-determination.

A-LEVEL ART

Exam Board: Eduqas

Entry Requirements: a minimum of 3 grade 5s and 2 grade 4s at GCSE including English Language and a grade 5 in Art.

What will I study? Drawing, painting, printmaking, mixed media, ceramics, and 3D work in Year 12. In Year 13 the focus will be on mastering your own specialist area.

How will I be assessed? Your Personal Investigation coursework will be worth 60% of your final mark and you will sit an externally assessed examination worth 40%.

What will it lead to? You may go onto an Art Foundation Course and future careers may include becoming an architect; illustrator; curator; theatre set designer; print maker or make-up artist.



A-LEVEL TEXTILES

Exam Board: Eduqas

Entry Requirements: a minimum of 3 grade 5s and 2 grade 4s at GCSE including English Language and a grade 5 in Textiles.

What will I study? Surface decoration, fabric manipulation, appliqué, machine and hand stitching in Year 12. In Year 13 you will focus on mastering your chosen specialist area.

How will I be assessed? Your Personal Investigation coursework will be worth 60% of your final mark and you will sit an externally assessed examination worth 40%.

What will it lead to? You may go onto university or gain an apprenticeship and work as an interior designer; costume designer; fashion designer; fashion buyer or merchandiser.

A-LEVEL PHOTOGRAPHY

Exam Board: AQA

Entry Requirements: a minimum of 3 grade 5s and 2 grade 4s at GCSE including English Language and a grade 5 in and an Art or Design subject.

What will I study? Areas of photography such as portraiture, landscape, still life, documentary or fashion photography, multimedia, or moving image. You will be expected to demonstrate skills such as audience awareness, responding to an issue and appreciation of viewpoint.

How will I be assessed? You will have two internally assessed (externally moderated) units. These will be both be completed in Year 13.

What will it lead to? You may go onto university or an apprenticeship and enjoy a future as a photographer; graphic designer; magazine features editor; television camera operator; advertising art director; digital marketer or a visual merchandiser.

A-LEVEL GRAPHIC DESIGN

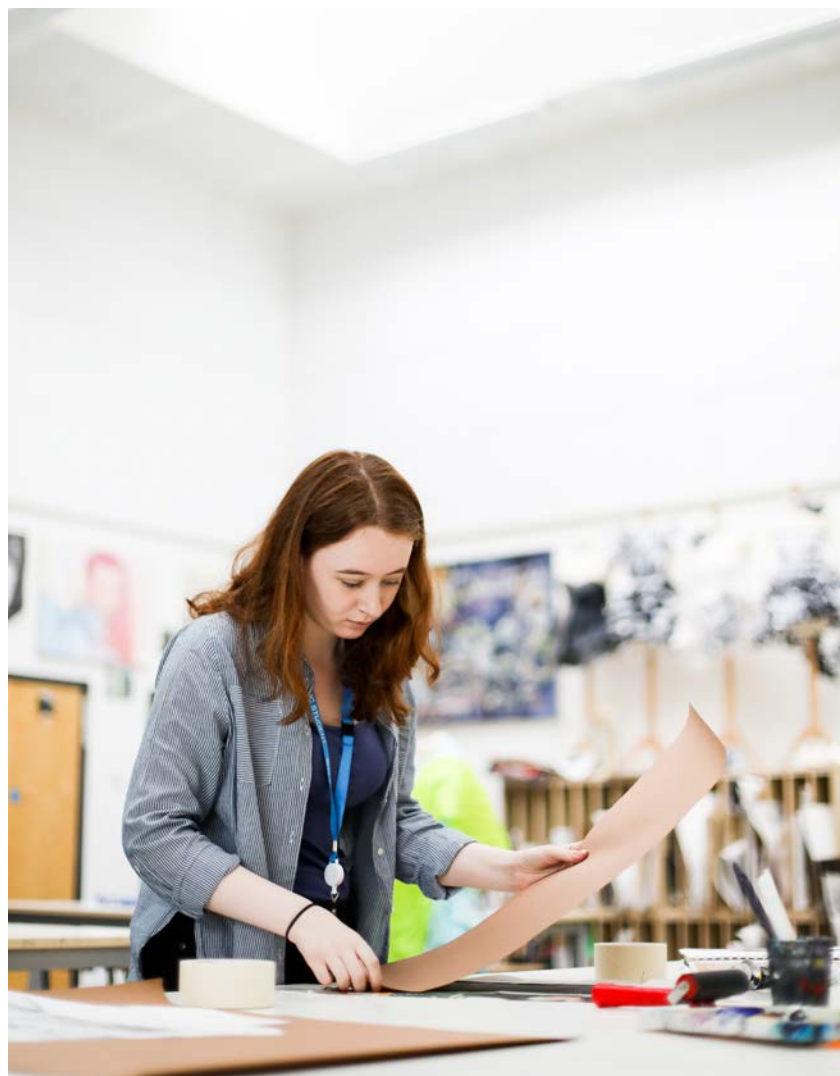
Exam Board: AQA

Entry Requirements: a minimum of 3 grade 5s and 2 grade 4s at GCSE including English Language and a grade 5 in and an Art or Design subject.

What will I study? You will work in areas such as interactive media, advertising packaging design, communication graphics, branding multimedia and motion graphic design. You may explore overlapping areas and combinations of these areas.

How will I be assessed? Internal assessment of your Personal Investigation Coursework (60%) and two externally assessed examinations (40%)

What will it lead to? You may go onto university to study a relevant subject or undertake an apprenticeship and enjoy a career as an architect; animator; advertising art director; creative director; graphic designer; illustrator; print maker or production designer.



BUSINESS & COMPUTING

Welcome message from Dan Hubball
Head of Business and Computing



This is an exciting time to be studying one of our many courses in our faculty. The "Great Recession" of 2007/2008, Brexit, GDPR, COVID-19 and Black Lives Matter present an ideal opportunity to study these courses and gain a deeper understanding of how, why and what happened in these life changing events.

Our students have gone on to study a wide range of courses at university including Economics, Philosophy, Politics & Economics, Business Management, Marketing, Business with Finance, Sports Management and Accounting. Recent students have gone on to secure degree level apprenticeships and one who is currently working with the British Intelligence Services. Students studying the Computer Science course have developed a range of 2D and 3D games, using a programming language of their choice. Students who study this course leave us with a range of programming languages which are used in industry; HTML, CSS, JavaScript, Python, SQL and C#.

Each of our courses allows students to build up their confidence, working collaboratively and presenting their findings, ensuring they are ready for the world of work. Preparing themselves for industry by becoming aware of the power of technology and its impact on society and the environment.

A-LEVEL BUSINESS STUDIES

Exam Board: Pearson/Edexcel

Entry Requirements: a minimum of 3 grade 5s and 2 grade 4s at GCSE including Maths and English Language plus a grade 5 in Business Studies (if studied)

What will I study? How businesses are operated, how they respond to changes in the economy, law, demographic composition and more. There will be plenty of number crunching as the world of business is full of numbers!

How will I be assessed? You will be assessed by externally assessed written examinations at the end of the second year of the course. The exams will consist of essays plus data response questions.

What will it lead to? Undergraduate degrees or advanced apprenticeships in Business, Business Management and other related subjects including Marketing, Human Resource Management or Accounting and Finance. Careers may include entrepreneurship; business management or banking.



BTEC EXTENDED CERTIFICATE IN **BUSINESS**

Exam Board: Pearson

Entry Requirements: a minimum of 5 grade 4s at GCSE including Maths and English Language.

What will I Study? Compulsory units on Exploring Business, Personal and Business Finance and Developing Marketing Campaigns plus an additional optional unit.

How will I be assessed? You will be assessed by a mixture of external examinations and internally assessed portfolio work.

What will it lead to? You may undertake an apprenticeship in a business-related field such as Business Administration, Accountancy, Business Advisor, or Business Management or you may want to study a related course at University, or in fact become an Entrepreneur owning and running your own business!

A-LEVEL **ECONOMICS**

Exam Board: Pearson/Edexcel

Entry Requirements: a minimum of 3 grade 5s and 2 grade 4s at GCSE including Maths and English Language.

What will I study? Microeconomics that models the behaviour of individuals and firms and macroeconomics which models the behaviour of the whole economy. You will also study economics from a global perspective.

How will I be assessed? You will be assessed by externally assessed examinations at the end of the course. These exams will consist of a mixture of multiple-choice questions, data response questions and of course, essays.

What will it lead to? Economics is well respected by universities and employers so it opens a wide range of opportunities. Future careers may include becoming an actuarial analyst; chartered accountant; data analyst; financial risk analyst; statistician or stockbroker.

A-LEVEL **COMPUTER SCIENCE**

Exam Board: OCR

Entry Requirements: a minimum of 3 grade 5s and 2 grade 4s at GCSE including English Language and an advised grade 6 or above in Computer Science and/or Maths

What will I study? 3 unit components - 1: Computer Systems 2: Algorithms and Programming and 3: Programming Project.

How will I be assessed? By externally assessed examinations (Components 1 & 2) worth 80% plus one internal assessment (Component 3) worth 20% (NEA).

What will it lead to? You could pursue your study of Computer Science at undergraduate level for example on a BSc or MEng Computer Science course or secure an advanced apprenticeship. Future careers may involve software development; web development; mobile app development; games design; information systems management; cyber security or multimedia programming.

AAQ IN **IT: DATA ANALYTICS**

Exam Board: OCR

Entry Requirements: a minimum of 5 grade 4s at GCSE including Maths and English Language plus a Level 2 Pass or above in Cambridge National in IT (if studied) and/or grade 4 or above in Computer Science (if studied)

What will I study? Compulsory units in Fundamentals of Data Analytics, Big Data and Machine Learning and Spreadsheet Data Modelling plus two optional units.

How will I be assessed? 2 units are externally assessed by examination and 3 internally assessed units (NEA).

What will it lead to? You could go onto university to study on an IT related course or secure an advanced apprenticeship. Future careers could include IT technical support; data analyst; digital marketing; database administration; network management or IT consultancy.

DESIGN & TECHNOLOGY

Message from Julie Attwood
Head of Design and Technology



If you are interested in designing and creating new products and finding solutions to problems, then Product Design is the course for you. If you are joining us from Great Sankey High School it is a natural progression in a friendly and familiar environment with staff that you already know. If you are new to the college, you will soon feel part of this special place. Our staff are all very experienced and strive to give you the best learning experience possible.

Product Design students leave BHC as versatile designers with a range of skills which enable them to be successful in an ever-changing competitive world.

Students in the past few years have secured degree sponsored apprenticeships with JCB and ACOM Civil Engineering and gone on to study Architecture at University of London and Set Design at Liverpool University.

During the course you will visit local companies and workshops to enhance your learning experience. We also have excellent facilities including 3D printers, laser cutters, 2D design, Adobe, and Photoshop.

If you are interested in understanding how food and nutrition works both in the body and in its functional and chemical states, then our new Food Science and Nutrition course could be for you. We have a wonderful recently refurbished kitchen with excellent facilities to allow students to develop their culinary skills and we are also the only sixth form in the area that offers this course.



AAQ IN FOOD SCIENCE & NUTRITION

Exam Board: WJEC

Entry Requirements: a minimum of 5 grade 4s at GCSE including English Language.

What will I study? Students can carry out this course as either a one year (short course) or two-year extended certificate. For the extended certificate, there are 5 units available; 3 are compulsory (Unit1: Nutritional needs across the life stages, Unit 2: Developing practical food production skills, Unit 3: Principles of food hygiene and food safety in food production) and students can choose between Unit 4: Experimenting to solve food production problems or Unit 5: Current issues in food science and nutrition. To qualify for the short course students' need to complete and pass Unit 1 and Unit 2

How will I be assessed? Unit 1 and Unit 2 are externally marked and are an exam both work 80 marks and will consist of short answers, extended answers and a case study. The exams are both 1 hour and 30 minutes. Unit 3, 4 and 5 are, Non-examined assessments. The 4 units students study each weigh 25% of their overall grade. Grading for the course is A-E.

What will it lead to? The Food Science and Nutrition sector plays a critical role in improving global health, food quality and sustainability, combining expertise from biology, chemistry, engineering and health sciences which can be advanced at higher education courses such as BSc Food and Nutrition, BSc Human Nutrition, BSc (Hons) Public Health Nutrition, BSc (Hons) Food Science & Technology. There are also an assortment of apprenticeship opportunities within the Food Sector and medical based practices.

A-LEVEL PRODUCT DESIGN

Exam Board: AQA

Entry Requirements: a minimum of 3 grade 5s and 2 grade 4s at GCSE including English Language and a grade 5 in and a DT subject.

What will I study? You will complete a 'Design and Make' project including a portfolio of work. You will study 'Technical Principles' whilst being able to demonstrate maths and science skills.

How will I be assessed? Internal assessment of your design and make project (50%) and two externally assessed examinations (50%)

What will it lead to? You may go onto university to study a relevant subject or undertake an apprenticeship and enjoy a career as an advertising art director; automotive engineer; graphic designer; materials engineer; product manager or production designer.



ENGLISH

Message from Anna Kitchener Head of KS5 English



If you are interested in where our language came from, how it has changed over time and how we continue to adapt its use in society today, you will thoroughly enjoy studying English Language A-level here at BHC. We examine how children acquire language and the amazing processes behind their speech and language development. As well as this, you will be inspired to create your own writing, including opinion articles and commentaries on topics that are important to you, supported and guided by our team of experienced teachers and external workshops. Students who have studied English with us have gone on to study English at universities such as Durham, Birmingham, Glasgow

and Manchester, leading them to successful careers in linguistics, journalism, law, publishing and education.

We also offer English Literature A-level, where you will have the opportunity to study a range of authors. Theatre trips are tailored to suit the interests of the class and to challenge you to experience a range of genres through live performances. You will also have the chance to visit Shakespeare's birthplace at Stratford-upon-Avon and listen to a professor provide further insight into the poetry, plays and novels you are studying.

Studying Creative Media offers you the opportunity to understand how and why the media functions, including learning by creating your own media texts. As technology, creativity, and competition increases, these skills become more in demand all over the world. Media studies will equip you with the communication and technology skills needed to succeed in the modern workplace, whether in the media industry or not. These skills include the use of Adobe Premiere Pro creating your own 'Horror movies', as well as using Adobe Photoshop to further your creative skills. At Barrow Hall College, we work with local industries to gain experience of in-house media roles; have 'in conversation' lectures with film editors; and attend workshops in media skills at the Media Museum, Media City and London film museum. If you choose to study Creative Media with us, you will be well equipped for what the modern workplace is looking for.



A-LEVEL ENGLISH LANGUAGE

Exam Board: AQA

Entry Requirements: a minimum of 3 grade 5s including English Language and 2 grade 4s at GCSE.

What will I study? Unit 1 - Language, the Individual and Society; Unit 2 - Language Diversity and Change; Unit 3 Language in Action.

How will I be assessed? Two externally assessed examinations held at the end of the course equating to 80% of your qualification and coursework equating to 20%.

What will it lead to? You may go onto university to study English further, or a course which can draw on your English skills. You may enjoy a career as a digital copywriter; editorial assistant; lexicographer; journalist; publishing copy-editor/proofreader or web content manager.

A-LEVEL ENGLISH LITERATURE

Exam Board: AQA

Entry Requirements: a minimum of 3 grade 5s including English Literature and 2 grade 4s at GCSE.

What will I study? Unit 1 – Literary genres: Aspects of Tragedy; Unit 2 – Texts and Genres: Elements of Crime Writing; Unit 3 – Theory and Independence.

How will I be assessed? Two externally assessed examinations held at the end of year two equating to 80% of your qualification and coursework equating to 20%.

What will it lead to? You may go onto university to study English further, or a course which can draw on your English skills. You may enjoy a career as a writer; journalist; digital copywriter; editorial assistant or a web content manager.

BTEC EXTENDED CERTIFICATE IN CREATIVE MEDIA

Exam Board: Pearson

Entry Requirements: a minimum of 5 grade 4s at GCSE including English Language plus a Level 2 Pass in BTEC Media (if studied)

What will I study? Compulsory units - Media Representations, Pre-Production Portfolio and Responding to a Commission plus one optional unit.

How will I be assessed? 50% internal assessment and 50% externally assessed examinations.

What will it lead to? You could go on to study on a related course at university or undertake an apprenticeship and enjoy a career as a media planner; multimedia specialist; programme researcher; social media manager; producer or a web content manager.



GEOGRAPHY

Message from Shaun Elliott
Head of Geography



Geography is a subject for our times, it is inherently multidisciplinary in a world that increasingly values people who have the skills needed to work across the physical and social sciences. Geography gives you the insight to draw connections, measure how individual actions can change the world, assess the costs and benefits of different scenarios, and seek solutions to the many complex questions about our planet.

At Barrow Hall College, our course covers Physical Geography consisting of Hazards, Coasts, Water and Carbon. Human Geography covers Globalisation, Changing Places and Urban Environments. There is a coursework element of 20% where students can be creative in designing their own Geographical Investigation. Examples have included Liverpool One regeneration project and Coastal management in North Wales.

There is a 4-day residential to North Wales as part of the A level course. We study the sand dunes of North Wales, Coastal features of Anglesey, Regeneration of Llandudno and the popular Aber falls in North Wales. There is also an option to go on an international trip. We alternate between Italy and Iceland. The next available trip where College will get preference will be Iceland 2025.

Whether you are a physical or a human geographer – you will love the balance of topics in A level Geography. You will have two teachers at A level, a specialist in Physical and a specialist in Human Geography. Most students in the past have gone to university to study degrees in Geography, Geology, Meteorology and Volcanology.

A-LEVEL GEOGRAPHY

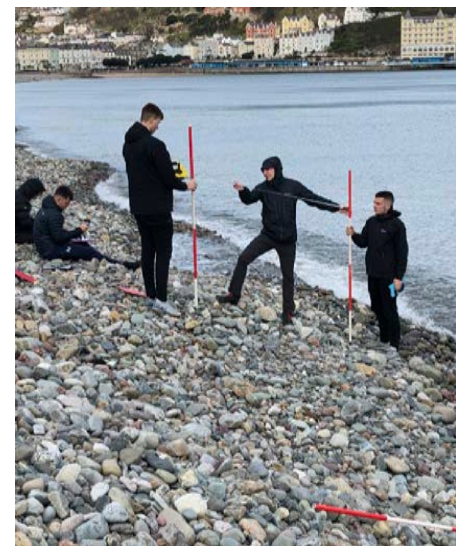
Exam Board: AQA

Entry Requirements: a minimum of 3 grade 5s including English Language and 2 grade 4s at GCSE plus a grade 5 in Geography (if studied)

What will I study? Physical Geography (Hazards, Coasts and Water/Carbon)
Human Geography (Globalisation, Changing Places and Urban environments)

How will I be assessed? Physical Geography Paper 1 - 40%, Human Geography Paper 2 - 40%, NEA (Coursework) - 20%

What will it lead to? You may go onto university to study on a related course and enjoy a career as a cartographer; commercial/residential surveyor; environmental consultant; geographical information systems officer; planning and development surveyor; town planner; landscape architect; or nature conservation officer.



HISTORY

Message from Mark Farrer
Head of History



History is widely recognised as being one of the most rewarding and universal subjects to study at A level. Consistently in the top 5 of A-level subjects nationally. Studying History not only helps improve your knowledge of the past, but also helps you gain skills that are invaluable in many jobs. Some of these skills include analysing, researching, communication and problem-solving. You'll also gain the ability to prioritise information and learn decisions making. This helps you to build an important skill set needed for progression into university or a career. Over the course you will study the exam topics of 'The making of Modern Britain 1951-2007' and 'Germany; the quest for political stability 1871 – 1991'. Alongside these topics is the NEA independent study on the role witchcraft in the Stuart period. Students have gone on to study History at Cambridge, Edinburgh, and St Andrews.

Politics allows students to gain an insight into political beliefs central to an understanding of the modern world. It develops analytical and evaluative skills in relation to interesting topics prevalent in the turbulent political climate of today allowing students to gain a greater understanding of the big questions which dominate society. Politics is an exciting and challenging course which offers students the chance to be up to date with the world they live. The course covers news and current affairs from the UK and US and helps you understand how each country is run and develops research, written communication, and debate skills. Students develop a critical awareness of the changing nature of politics and the relationships between political ideas, political institutions, and political processes. The study of the ideologies will enhance the students' knowledge and understanding of politics, political debate and issues.

A-LEVEL HISTORY

Exam Board: AQA

Entry Requirements: a minimum of 3 grade 5s including English Language and 2 grade 4s at GCSE plus a grade 5 in History (if studied)

What will I study? The Quest for Political Stability: Germany, 1871-1991; The Making of Modern Britain, 1951-2007.

How will I be assessed? At the end of the course you will sit two externally assessed examinations worth 75%. Your NEA, which is internally assessed, counts for 25% of your final grade

What will it lead to? Studying A-Level History not only helps improve your knowledge of the past, but it also helps you gain skills that are invaluable in many jobs. Some of these skills include analysing, researching, communication and problem-solving. You will also gain the ability to prioritise information and learn how to make vital decisions. This helps you to build an important skill set needed for progression into university or a career.

A-LEVEL POLITICS

Exam Board: AQA

Entry Requirements: a minimum of 3 grade 5s including English Language and 2 grade 4s at GCSE

What will I study? Units of the Politics A-Level; Government and Politics of the UK, Government and Politics of the USA + comparative politics and Political Ideas.

How will I be assessed? At the end of Year 13 there are three two-hour exam papers each worth a third of your A-Level

What will it lead to? An A-Level in Politics is ideal if you are considering studying politics, sociology, ethics, advertising, or journalism at university and is highly regarded by employers in industries including politics, international organisations, the media, government and the civil service.

MATHEMATICS

Message from Amy Boyd
Head of KS5 Maths



Mathematics sits at the centre of many different pathways to your future. At Barrow Hall College we show you where our phenomenal subject and its applications move on from after Year 11. Our staff are passionate, knowledgeable and specialists in the subject. We will look to challenge and enrich you as a mathematician by competing in activities such as the UKMT Senior Mathematics Challenge, masterclasses to help you prepare for the college entrance exams, such as MAT and TMUA, and the annual Ritangle competition run by MEI, where previously our Year 12 team were nationally recognised for their outstanding efforts.

Our students use the mathematical qualifications that they gain to move onto a variety of different areas, including Higher Education courses and Apprenticeships, both at Degree and Higher Levels. We are consistently successful in sending students to Oxbridge and Russell Group institutions and some of our past students from BHC are now highly renowned in areas such as data analysis, engineering, forecast modelling and actuarial science.

We also offer students who do not wish to follow the A-Level pathway the opportunity to take the Level 3 Mathematical Studies qualification (more commonly known as Core Maths) which helps to support studies in other A-Level subjects such as Psychology, Geography and Biology.



A-LEVEL MATHS

Exam Board: AQA

Entry Requirements: a minimum of 3 grade 5s and 2 grade 4s at GCSE including English Language plus a grade 6 in Maths (grade 7 preferred)

What will I study? A-Level Mathematics consists of developing concepts in the pure mathematics elements and then applying these two areas such as statistics and mechanics.

How will I be assessed? Three externally assessed written examinations at the end of the course.

What will it lead to? You may go on to study Maths at university or a degree where A-Level Maths is expected such as Computer Science or Engineering. Future careers may include actuarial analyst; chartered accountant; data scientist; statistician; teacher; research scientist or investment analyst.

A-LEVEL FURTHER MATHS

Exam Board: AQA

Entry Requirements: a minimum of 3 grade 5s and 2 grade 4s at GCSE including English Language plus a grade 8 in Maths.

What will I study? A-Level Further Mathematics builds upon concepts being developed in pure mathematics elements, such as, algebra, matrices, and complex numbers. This is extended to investigating their use in mathematical applications, such as statistics and mechanics.

How will I be assessed? Three externally assessed written examinations at the end of the course.

What will it lead to? You may go on to study Maths at university or a degree where A level Maths is expected such as Computer Science or Engineering. Future careers may include actuarial analyst; chartered accountant; data scientist; statistician; research scientist or investment analyst.

CORE MATHS (Equivalent of 1 AS Level)

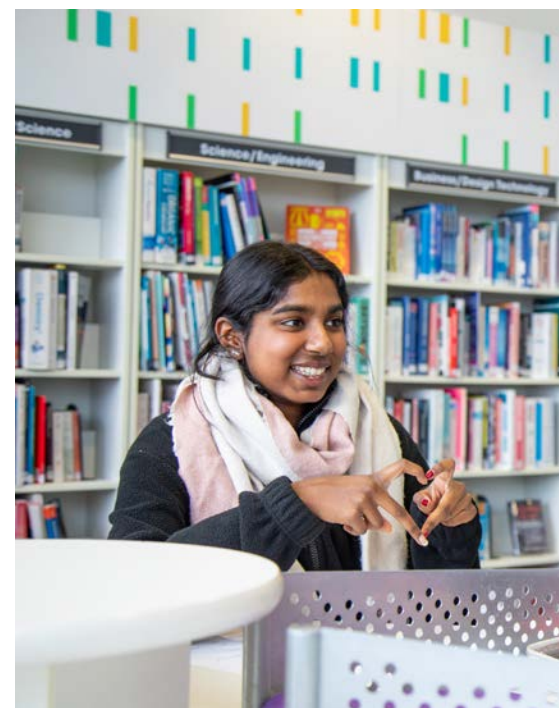
Exam Board: AQA

Entry Requirements: a minimum of 3 grade 5s and 2 grade 4s at GCSE including Maths and English Language.

What will I study? Topics include Finance, Estimation, and Statistical Analysis

How will I be assessed? Two externally assessed written examinations at the end of the year.

What will it lead to? It can lead to a variety of career roles not just those in accounting and finance. It will help apply mathematical techniques in economics, sociology, chemistry, geography, computing, and business management.



MODERN FOREIGN LANGUAGES

Message from Emma McCann

Head of MFL



We live in a multicultural world and companies are increasingly aware of the advantages of recruiting people with language skills and an A-Level language course in French or Spanish will combine well with any other programme of study here at Barrow Hall College. Careers in business, marketing, journalism, engineering, law, and tourism all demand good communication skills, and the ability to speak a foreign language will give you the edge when applying for jobs.

Our class sizes are small, creating the perfect environment to enable your language skills to develop and consequently your confidence in your own ability to speak and write with increasing fluency will grow. Our A-Level students have participated in trips to Barcelona, Madrid, Leipzig, Köln, and Paris in past years, and we have also welcomed Language Assistants to work with pupils on a one-to-one basis to help improve your confidence in speaking the language.

In recent years some students have continued their studies of French or Spanish at degree level whilst others have gone on to combine their study with other subjects such as law and education. The beauty of studying a language is that it is so versatile; it complements work across many different sectors and combines with a wide range of other subjects at degree level. What's more it is a rewarding lifelong skill that you can continue to enjoy whatever your future holds!



A-LEVEL FRENCH

Exam Board: AQA

Entry Requirements: a minimum of 3 grade 5s including English Language, a 6 in French and 2 grade 4s at GCSE.

What will I study? Units in The changing nature of family; The 'cyber-society;' The place of voluntary work; A culture proud of its heritage; Contemporary francophone music Cinema: the 7th art form Positive features of a diverse society; Life for the marginalised; How criminals are treated; The critical study of one French film and one book

How will I be assessed? You will be externally assessed on two written examination papers and an oral examination at the end of the course.

What will it lead to? You may go onto study languages at university or a combined language and another subject at undergraduate level. Future careers may include interpreting; translating; teaching; international aid; law; diplomatic services; journalism or speech and language therapy.

A-LEVEL SPANISH

Exam Board: AQA

Entry Requirements: a minimum of 3 grade 5s including English Language and a 6 Spanish and 2 grade 4s at GCSE.

What will I study? Units in based and the following areas will be studied: Modern and traditional values (family, marriage, the church); Cyberspace; Equal rights; Multiculturalism in Hispanic society; Modern day idols; Spanish regional identity; Cultural heritage (music, art ,architecture, literature); Today's youth, tomorrow's citizens; Monarchies and dictatorships; Popular movements; Critical study of one Hispanic film and one book.

How will I be assessed? You will be externally assessed on two written examination papers and an oral examination at the end of the course.

What will it lead to? You may go onto study languages at university or a combined language and another subject at undergraduate level. Future careers may include interpreting; translating; teaching; international aid; law; diplomatic services; journalism or speech and language therapy.

PERFORMING ARTS

Message from Jo Cosgrove
Head of Performing Arts



Are you creative? Do you enjoy performing and or recording music? Do you enjoy composing your own music, devising your own theatrical performances and using sequencing software? Then we have the courses for you. We offer A-Levels in Music, Theatre Studies and Music Technology. Opting for one of our courses can open the door to a career in performing, composing, acting, directing, recording, teaching, lighting design, set and prop design, journalism, film and gaming music, session musicianship, musical directorship.

It might be that you simply enjoy music; we have lots of students who take our subjects to show that they are well-rounded individuals and universities view our courses fondly.

Students in the recent past have gone on to study Music at Cambridge, LIPA, Sheffield and Manchester. We have strong links with The University of Huddersfield and the majority of our Music Technology applicants choose to study there. Many of our students are now professional musicians, including a musical director at the Royal Exchange, Manchester.

Students have various enrichment opportunities with regular trips to concerts and the theatre and we regularly work in partnership with Liverpool Empire Theatre. Our Headteacher is an advocate of the arts, and should you wish to learn an instrument in college, the cost of these lessons is generously subsidised. If you are opting for A-Level Music you need to be having music lessons to be accepted onto the course, you can take these through the college or privately.



A-LEVEL MUSIC

Exam Board: AQA

Entry Requirements: a minimum of 3 grade 5s including English Language and Music and 2 grade 4s at GCSE.

What will I study? 3 components - 1: Appraising Music 2: Performance & 3: Composition

How will I be assessed? You will be assessed at the end of the course. Component 1 will be assessed by an exam covering listening, analysis, and an essay. Component 2 involves a 10-minute performance of solo/ensemble/ sequencing/ multi-track recording. Component 3 involves two compositions, one free and one to brief.

What will it lead to? You may go on to study Music at undergraduate level and future careers may include musician; music therapist; private music teacher; sound technician; broadcast engineer; community arts worker; or radio producer.

A-LEVEL MUSIC TECHNOLOGY

Exam Board: AQA

Entry Requirements: a minimum of 3 grade 5s including English Language and Music or Music Technology and 2 grade 4s at GCSE.

What will I study? 4 components - 1: Technology Based Composition 2: Recording 3: Listening and Analysing and 4: Producing and Analysing

How will I be assessed? You will be assessed on all four components at the end of the course. For component 1 you will plan and carry out your own multi-track; for component 2 you will use a range of production techniques to create your own original composition; for component 3 you will sit a written examination and component 4 will involve a practical and a written examination.

What will it lead to? You may go on to study Music Technology at undergraduate level and future careers may include director of audio/visual events; audio and lighting technician; music centre owner and entrepreneur; audio engineer of audio-visual specialist.

A-LEVEL THEATRE STUDIES

Exam Board: Eduqas

Entry Requirements: a minimum of 3 grade 5s and 2 grade 4s at GCSE including English Language plus a grade 5 in Drama (if studied)

What will I study? Component 1 students participate in the creation, development, and performance of a piece of theatre based on a reinterpretation of an extract from a text in the style of an influential theatre practitioner or company. Component 2 includes a visit from an external examiner who will be presented with two practical pieces; a devised piece using the techniques and working methods of either an influential theatre practitioner or company and secondly students perform an extract from a text in a different style chosen by the student themselves.

Component 3 Text in Performance is a written exam in which students respond to 3 significant theatre texts that will have been explored practically throughout the course.

How will I be assessed? **Component 1:** Theatre Workshop is internally assessed and externally moderated in year one. Component 2: Text in Action is assessed in year two by a visiting examiner and Component 3: Text in Performance is a written exam at the end of year two.

What will it lead to? You may go on to study Drama at undergraduate level. Future careers may include actor; presenter; choreographer; musician; dancer; sound engineer; lighting engineer; theatre director; community arts worker; casting manager; broadcaster; writer; producer; Make-up Artist or costume designer.

PHILOSOPHY & ETHICS

Message from Lisa Baker
Head of Philosophy & Ethics



Philosophy and Ethics is an exciting subject that explores the world as people find it. In the study of Philosophy and Ethics we investigate the most profound questions and the deepest aspects of what it means to be human. Are we simply animals that have evolved or do we have a spiritual dimension that survives us after death? Does God exist? What makes one action right and another action wrong?

Studying Philosophy and Ethics encourages you to think critically and to suspend your own beliefs and disbeliefs whilst thinking. It encourages open-mindedness and helps you mature in your thoughts. Philosophy and Ethics helps to develop skills of analysis, evaluation, and literacy. This makes it an excellent subject when applying to university.

Previous students have gone on to study at some of the top universities in the country studying a wide range of subjects such as Law, Medicine, Politics, Journalism, Nursing, Social Work and Business, to name but a few!

At Barrow Hall College we also understand the importance of opportunities to learn outside the classroom to deepen your love of the subject. It is because of this we have taken students on trips to the Vatican in Rome and Auschwitz in Krakow. Students have also had opportunities to attend talks by important key scholars they study within the specification such as Richard Dawkins.

Philosophy and Ethics is a fascinating subject that challenges your thinking and allows you to explore the world in which you live. If you enjoy debates and critical thinking this is the subject for you!

A-LEVEL PHILOSOPHY & ETHICS

Exam Board: AQA

Entry Requirements: a minimum of 3 grade 5s including English Language and 2 grade 4s at GCSE plus a grade 5 in Religious Studies (if studied)

What will I study? **Component 1:** Philosophy of Religion and Ethics and **Component 2:** Study of religion (Christianity) and Dialogues.

How will I be assessed? **Component 1:** Philosophy of Religion and Ethics and **Component 2:** Study of religion (Christianity) and Dialogues.

What will it lead to? You could go onto study a related course at university such as a BA Theology degree or Philosophy and religion. Future careers may include teaching; politics; journalism or law.

PHYSICAL EDUCATION

Message from Stu Garry
Head of Physical Education



If sport and physical fitness are your passion, look no further than the PE department at Barrow Hall College. Our team is made up of enthusiastic and passionate teachers who are determined to bring out your full potential. The department facilities provide the opportunity for students to complete a BTEC in Sport, with units selected to develop a broad range of knowledge, giving you the best opportunities for future progression. You will have the chance to be assessed both theoretically and practically demonstrating your many talents.

We are proud of our students' recent achievements with many going on to study Sport and Physiology at university, and others excelling within the sport and leisure industry.

Students have access to state-of-the-art facilities with our 3G and new sports hall. As a department we passionately understand the importance sport holds within society and would welcome the opportunity to further develop your enthusiasm, knowledge and understanding in these areas.

BTEC EXTENDED CERTIFICATE IN SPORT

Exam Board: Pearson

Entry Requirements: a minimum of 5 grade 4s at GCSE including English Language, plus a grade minimum grade 4 in Sport Studies (if studied).

What will I study? Compulsory units include Anatomy and Physiology, Fitness Training and Programming for Health and Sport and Well-being. Optional units will be chosen to best suit the needs of our students.

How will I be assessed? A mixture of internally assessed coursework and externally assessed examination.

What will it lead to? You may go on to study a sport related degree at university and future careers may include sports coach; nutritionist; physiotherapist or fitness centre manager.



SCIENCE

Message from Emily Dulson Head of Science



If it's sciences and health that you're wanting, then we are the department for you. With A-Levels in Biology, Chemistry and Physics and BTECs in Applied Science and Health and Social Care you need look no further.

Our subjects lead to an A to Z of careers ranging from Analytical Chemist, Biochemist, Clinical Pharmacologist, Dentist, Engineer, Forensic Scientist all the way through to Zoologist!

In recent years we have had students go on to study Biomedical Science, Forensics Science, Aeronautical Engineering, Early Childhood Studies, Engineering and Physical Sciences, Meteorology and Climate Science, Genetics, Occupational Therapy, Children's Nursing, marine Biology Zoology as well as Medicine and Veterinary Medicine.

We frequently have students attend several summer schools at universities where they take part in activities as diverse as designing experiments to be launched into space to examine marine invertebrates and their responses to environmental stressors.

Each year we are able to run some excellent enrichment activities such as lecture visits to hear some of the best scientists working at the cutting edge of their specialisms including Prof. Robert Winston, Prof Andrea Sella, Prof Richard Dawkins, Prof Dame Nancy Rothwell, Dr Helen Czerski and Dr Maggie Aderin-Pocock to name a few. We run an annual field trip to Wales for Biology and Applied Science students and in February 2024 we are taking students to CERN in Switzerland and are looking into the possibility of trips further afield with Operation Wallacea as an introduction to conservation and biological field research.

Teachers in our department strive to make learning stimulating, encouraging students to push themselves further stretching both their ability and self belief.



A-LEVEL BIOLOGY

Exam Board: AQA

Entry Requirements: minimum of 3 grade 5s and 2 grade 4s at GCSE including English Language plus a grade 6 in Maths and Separate Science Biology or a grade 7 on Trilogy Award GCSE.

What will I study? Biological Molecules; Organisms Exchange Substances With Their Environment; Genetic Information, Variation And Relationships Between Organisms; Energy Transfers In And Between Organisms; Organisms Respond To Changes In Their Internal And External Environments; Genetics, Populations And Ecosystems; And The Control Of Gene Expression.

How will I be assessed? Practical assessments have been divided into those that can be assessed in written examinations and those that can only be directly assessed whilst students are carrying out experiments. A level grades will be based only on marks from written examinations (3 papers sat at the end of the second year). A separate endorsement of practical skills will be taken alongside the A level. This will be assessed by teachers and will be based on direct observation of students' competency in a range of skills.

What will it lead to? You may go on to study Biology or a related course at university and future careers may include medicine; veterinary medicine; dentistry; biomedical science; zoology or teaching.

A-LEVEL CHEMISTRY

Exam Board: AQA

Entry Requirements: minimum of 3 grade 5s and 2 grade 4s at GCSE including English Language plus a grade 6 in Maths and Separate Science Chemistry or a grade 7 on Trilogy Award GCSE.

What will I study? Students will study Physical Chemistry, Inorganic Chemistry and Organic Chemistry.

How will I be assessed? Practical assessments have been divided into those that can be assessed in written examinations and those that can only be directly assessed whilst students are carrying out experiments. A level grades will be based only on marks from written examinations (3 papers sat at the end of the second year). A separate endorsement of practical skills will be taken alongside the A level. This will be assessed by teachers and will be based on direct observation of students' competency in a range of skills.

What will it lead to? You may go on to study Chemistry or a related course at university and future careers may include analytical chemist; chemical engineer; healthcare scientist; clinical biochemistry; forensic Scientist; nano-technologist; pharmacologist; research scientist, toxicologist, medicine, veterinary science, and dentistry.

A-LEVEL PHYSICS

Exam Board: AQA

Entry Requirements: minimum of 3 grade 5s and 2 grade 4s at GCSE including English Language plus a grade 6 in Maths and Separate Science Physics or a grade 7 on Trilogy Award GCSE.

What will I study? Particles and Radiation; Waves; Mechanics and Materials; Electricity; Further Mechanics and Thermal Physics; Fields and Their Consequences; Nuclear Physics; Astrophysics; Measurements and Their Errors.

How will I be assessed? Practical assessments have been divided into those that can be assessed in written examinations and those that can only be directly assessed whilst students are carrying out experiments. You will be assessed by three written examination papers which are externally assessed. Each paper lasts two hours and is sat at the end of the second year.

What will it lead to? You may go on to study Physics or a related course at university or alternatively secure a higher apprenticeship. Future careers may include geophysicist; field seismologist; metallurgist; nano-technologist; radiation protection practitioner; research scientist; engineer; lecturer or teacher.

AAQ IN APPLIED SCIENCE

Exam Board: Pearson

Entry Requirements: minimum of 5,5 in Science, plus a 4 in English Language and Maths

What will I study? The principles and applications of biology, chemistry and physics, as well as practical scientific procedures and techniques.

How will I be assessed? You will be assessed by a mixture of internally assessed portfolio and externally assessed examination

What will it lead to? You may go on to study a science course at university or secure a higher apprenticeship. Careers may include work in Healthcare (Nursing, Midwifery, Paramedic), Environmental Science, Pharmaceuticals, Zoology, Physiotherapy

AAQ IN HEALTH AND SOCIAL CARE

Exam Board: Pearson

Entry Requirements: a minimum of 5 grade 4s at GCSE including English Language and Science.

What will I study? Human Lifespan and Development, Human Biology and Health; Principles of Health and Social Care Practice; Health Science.

How will I be assessed? You will be assessed by a mixture of internally assessed portfolio and externally assessed examinations.

What will it lead to? Future careers may include nursing; social work; teaching; physiotherapy; midwifery.





SOCIAL SCIENCES & LAW

Message from Lucy Kennedy
Head of Social Sciences



Social Science is the fascinating field of science that looks at understanding and explaining how people behave. Whether that be on a small scale as individuals or on a larger scale by exploring our place in society.

We take pride in offering a vast range of Social Science subjects including, Psychology, Sociology, Criminology and Law. At Barrow Hall College, we aim for every one of our students to be a proud social scientist that takes their learning beyond the classroom. To aid this, we provide enrichment experiences through guest speakers, workshops and educational trips. For example, all social science students are given the opportunity to embark on a Social Science trip to London where activities are tailored to cater to the individual subjects. Law students benefit from a trip to Parliament, The Royal Courts of Justice, UK Supreme Court and The Central Criminal Court (The Old Bailey). Criminology and Sociology students can also take advantage of these visits whilst getting to experience the Clink Prison museum, the Jack the Ripper walking tour and a Suffragettes or Karl Marx walking tour. For our Psychology students, the Freud museum is a must see!

As a department we encourage constant exploration and reading around your chosen Social Science subject, and we have made a SharePoint site to support with this. Students can find an array of resources from discovery lists highlighting the best documentaries, podcasts and books to read to an extensive revision programme as well as access to teacher PowerPoints and resources. This makes revision and applying for University or jobs that little bit easier.

Our Social Science classes are engaging, support discussion and give you expert guidance from experienced staff. If you have an inquisitive mind, a thirst for knowledge and a desire to understand the people and the world around us - then a Social Science is most definitely for you.

A-LEVEL PSYCHOLOGY

Exam Board: AQA

Entry Requirements: a minimum of 3 grade 5s and 2 grade 4s at GCSE including Maths and English Language plus a grade 5 in Psychology (if studied)

What will I study? Social Influence, Memory, Attachment, Clinical Psychology and Mental Health, Approaches in Psychology, Biopsychology, Research Methods, Issues and Debates in Psychology, Gender, Schizophrenia and Aggression.

How will I be assessed? You will sit three externally assessed examination papers at the end of the course.

What will it lead to? You may go on to study Psychology at undergraduate level and future careers may include clinical psychologist; counselling psychologist; educational psychologist; forensic psychologist; health psychologist; high intensity therapist; occupational psychologist; mental health worker; psychological well-being practitioner or sports and exercise psychologist.

A-LEVEL SOCIOLOGY

Exam Board: AQA

Entry Requirements: minimum of 3 grade 5s and 2 grade 4s at GCSE including English Language.

What will I study? Education, Methods in Context, Theory and Methods, Families and Households, Beliefs in Society, Crime and Deviance.

How will I be assessed? You will be assessed by three externally assessed examination papers at the end of the course.

What will it lead to? Future careers may include community development worker; family support worker, international aid development worker, social researcher, Home Office/ Government jobs, law, criminal justice sector, police, air hostess, HR manager, teacher.

A-LEVEL LAW

Exam Board: AQA

Entry Requirements: minimum of 3 grade 5s and 2 grade 4s at GCSE including English Language.

What will I study? You will learn how the English Legal System works and 3 substantive areas of law: Criminal law, Law of Tort, and Contract Law.

How will I be assessed? By three externally assessed examinations at the end of the second year of the course. These exams will consist of a mixture of multiple-choice questions, essays and problem-based scenario questions requiring application of the law.

What will it lead to? Law is well respected by universities and employers, so it opens to a wide range of opportunities. You may go to university or undertake a legal apprenticeship and work in the legal profession as a barrister, solicitor or legal executive. You may also go into politics, work for the police or even teach.

LEVEL 3 APPLIED DIPLOMA IN CRIMINOLOGY

Exam Board: WJEC

Entry Requirements: a minimum of 5 grade 4s at GCSE including English Language.

What will I study? Criminal Activity and Reporting; The Media and its Role in Creating Panic; Campaign for Change; Crime Scene Analysis; Courtroom Evidence; Role of CPS; Law Making; Prison and Agencies of Social Control.

How will I be assessed? You will be assessed through 2 internally assessed controlled assessments (8 hour exams over 3 days with prepared notes) and 2 externally assessed examinations. These will take place throughout Year 12 and Year 13

What will it lead to? You may go on to study Criminology or a related course at university. Future careers may include advice worker; community development worker; detective; lecturer or teacher; policy officer; prison officer; probation officer or social researcher.

Omega Multi-Academy Trust

Barrow Hall College at Great Sankey High School, is part of Omega Multi-Academy Trust, which educates over 5000 children, students and young people across Warrington and Liverpool.

As a values driven trust, students are placed at the heart of every decision. The mission statement "To provide the best school experience possible for every child and to be the best employer we can be" means students, staff and communities can flourish.

For us, being part of Omega Multi-Academy Trust means high expectation as standard. We have opportunities to network with other education establishments, learn about innovative teaching methods and new enhancements in the quality of education. We forge partnerships within the Trust which creates a sense of unity, shared goals and dynamic learning environments. With varied training and development opportunities available our educators can grow professionally whilst our students benefit from shared learning experiences and differing opportunities.

As part of Omega Multi-Academy Trust, Barrow Hall College has access to increased investment and development opportunities, enabling us to continually enhance our facilities and create an environment conducive to high quality learning for all.

To find out more about Omega Multi-Academy Trust, please visit their website www.omegamat.co.uk









"Big enough to offer choice,
small enough to care"



Barrow Hall College

Barrow Hall Lane
Great Sankey
Warrington
WA5 3AA



01925 720 726



greatsankey.org/college

