

BTEC

Health and Social Care



Overview of the course

- This is a two year course.
- There are three components, two are taught/assessed in year 10 and one is taught/assessed in year 11.

BTEC grade	GCSE equivalent grade
L2D*	8.5
L2D	7
L2M	5.5
L2P	4
L1D	3
L1M	2
L1P	1.75

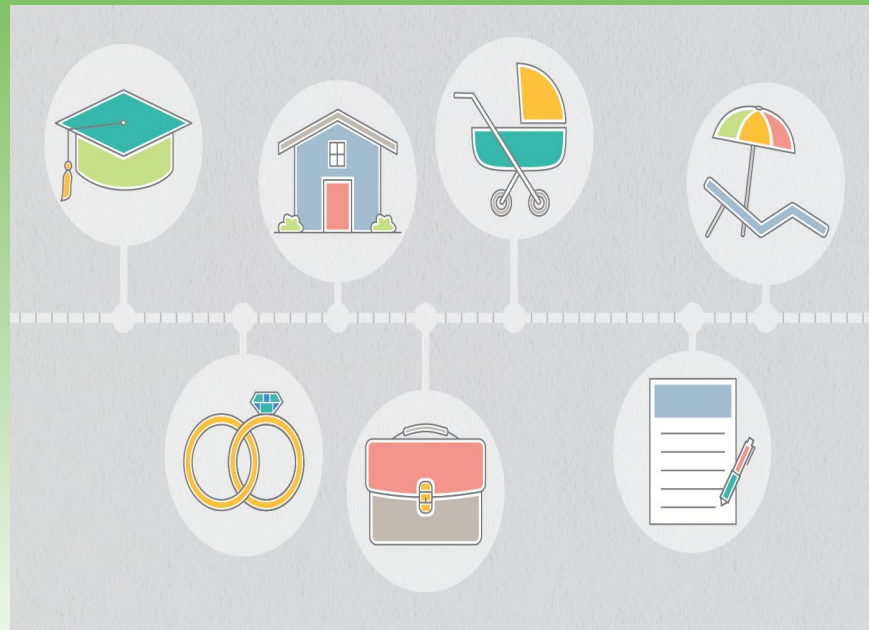
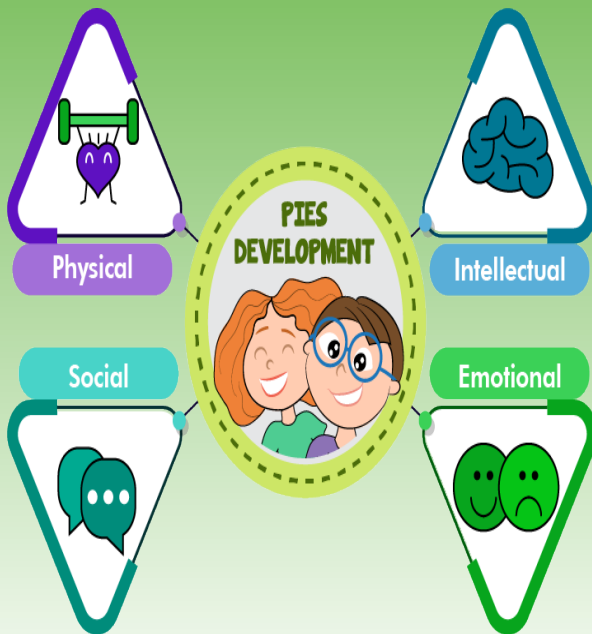


Overview of the course

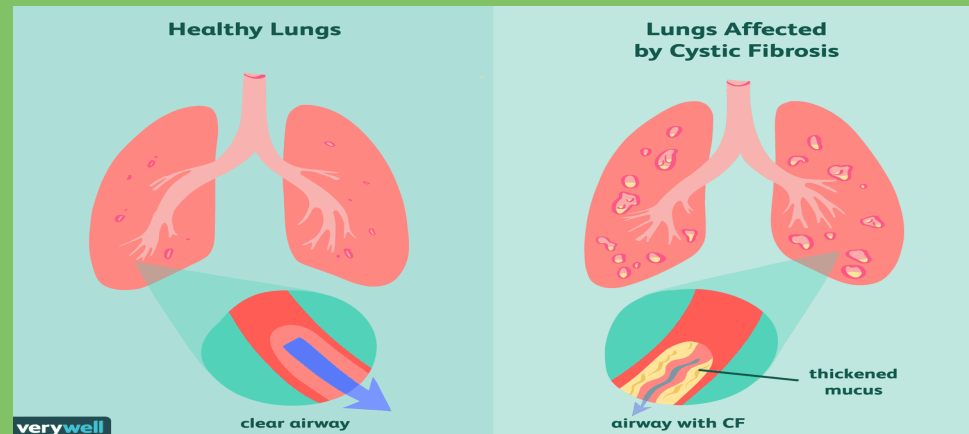
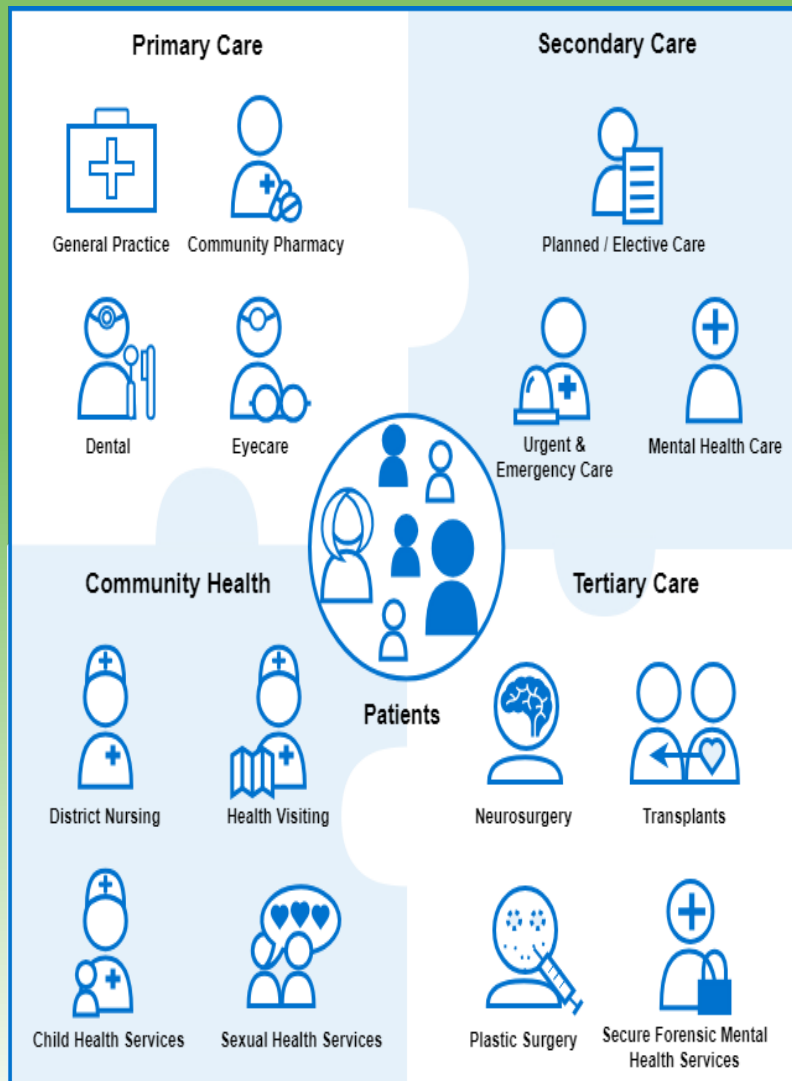
Component Number and Title	Assessment
1: Human Lifespan Development	Controlled assessment (school based)
2: Health and Social Care services	Controlled assessment (school based)
3: Health and wellbeing	External exam (2 hours)



Component one



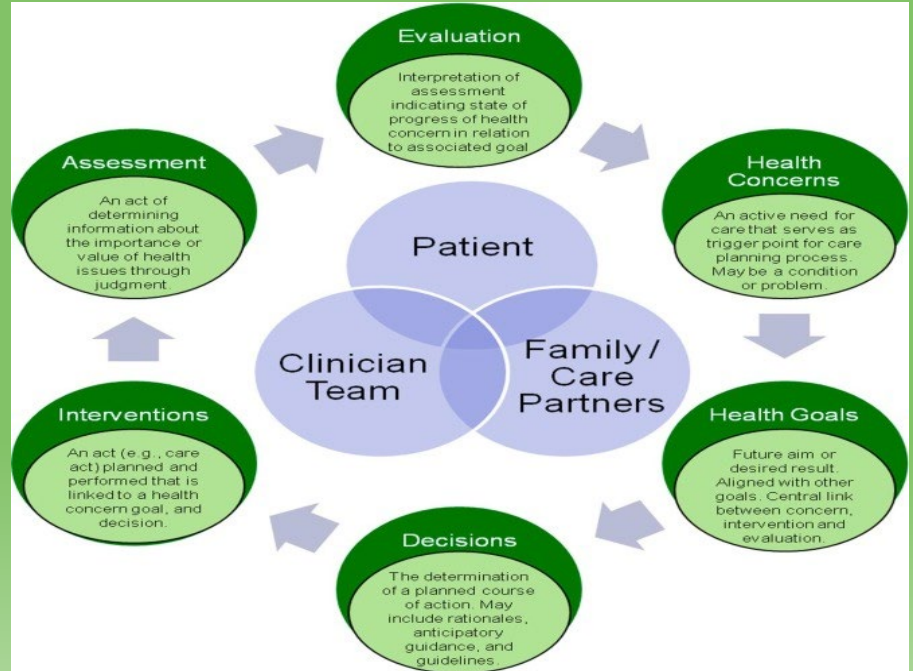
Component two



Component three

BMI Chart

WEIGHT lbs	100	105	110	115	120	125	130	135	140	145	150	155	160	165	170	175	180	185	190	195	200	205	210	215
kgs	45.5	47.7	50.0	52.3	54.5	56.8	59.1	61.4	63.6	65.9	68.2	70.5	72.7	75.0	77.3	79.5	81.8	84.1	86.4	88.6	90.9	93.2	95.5	97.7
HEIGHT in/cm	Underweight				Healthy				Overweight				Obese				Extremely obese							
5'0" - 152.4	19	20	21	22	23	24	25	26	27	28	29	30	31	32	33	34	35	36	37	38	39	40	41	42
5'1" - 154.9	18	19	20	21	22	23	24	25	26	27	28	29	30	31	32	33	34	35	36	37	38	39	40	
5'2" - 157.4	18	19	20	21	22	23	24	25	26	27	28	29	30	31	32	33	34	35	36	37	38	39		
5'3" - 160.0	17	18	19	20	21	22	23	24	25	26	27	28	29	30	31	32	33	34	35	36	37	38		
5'4" - 162.5	17	18	19	20	21	22	23	24	25	26	27	28	29	30	31	32	33	34	35	36	37			
5'5" - 165.1	16	17	18	19	20	21	22	23	24	25	26	27	28	29	30	31	32	33	34	35	36			
5'6" - 167.6	16	17	18	19	20	21	22	23	24	25	26	27	28	29	30	31	32	33	34	35				
5'7" - 170.1	15	16	17	18	19	20	21	22	23	24	25	26	27	28	29	30	31	32	33	34				
5'8" - 172.7	15	16	17	18	19	20	21	22	23	24	25	26	27	28	29	30	31	32	33					
5'9" - 175.2	14	15	16	17	18	19	20	21	22	23	24	25	26	27	28	29	30	31						
5'10" - 177.8	14	15	16	17	18	19	20	21	22	23	24	25	26	27	28	29	30							
5'11" - 180.3	14	15	16	17	18	19	20	21	22	23	24	25	26	27	28	29								
6'0" - 182.8	13	14	15	16	17	18	19	20	21	22	23	24	25	26	27	28								
6'1" - 185.4	13	14	15	16	17	18	19	20	21	22	23	24	25	26	27									
6'2" - 187.9	12	13	14	15	16	17	18	19	20	21	22	23	24	25	26									
6'3" - 190.5	12	13	14	15	16	17	18	19	20	21	22	23	24	25	26									
6'4" - 193.0	12	13	14	15	16	17	18	19	20	21	22	23	24	25	26									



How is the course assessed?

- Component 1: 4 tasks spread over the second term of year 10
- Component 2: 5 tasks spread over the first term of year 11
- Component 3: 1 external exam sat at the end of year 11 (mock opportunities to practice)



Knowledge

- What growth and development occurs during different life stages
- Factors that can affect growth and development
- Types of services
- Barriers to accessing services and how they are overcome
- Use of diagnostic results (BMI, peak flow and blood pressure)



Skills

- Reading and analysing case studies
- Application of theory to real world examples
- Linking test results (BMI, peak flow and blood pressure) to physiological disorders



Potential next steps

- The BTEC can be a springboard to a level 3 qualification in an appropriate vocational discipline.
- BTEC health and social care (level 3)
- Nursing apprenticeships
- T-levels





Thank you for your
time.

Any questions?

