



Welcome
to Textile
S.

How will I be assessed?



Over the two year course you will be assessed against our 4 assessment objectives for both your **coursework (60%)** and your final **exam (40%)**.

A01- Artists research and analysis.

A02- Experimenting with a range of materials.

A03- Ideas, photography and drawing.

A04- Final outcomes and links back through your A01-3.

Exam information:

You will start your exam project in January of year 11.

Exam time: **10 hours** to make a final outcome.

AOL – Artist research and ideas.

- ARTIST RESEARCH -

Ruby Silvius was born in Talcohan city in the Philippines. Her work has been exhibited internationally and has won numerous awards. Silvius studied Fine art and architecture in the Philippines. She has been exhibiting her work in the Hudson Valley and Capital region since 1986. Silvius has also won a 'peoples choice award' for her series '365 days of tea'. In 1986, she moved to Athens and worked as an architectural draftsman before getting degrees in business administration and marketing management.

Ruby
in business
gement. Silvious



I think that this one is my favourite one because of the vibrant colours. I also like the edging I did with the white acrylic paint. I love how the pink and yellow blended.



My Interpretation

To create these tea bags inspired by Ruby Silvious, I had to dry the tea bags out and then empty the contents before drawing the outline on in pencil. Then I used watercolours for the solid colours before adding a fine liner and white acrylic paint to add detail. Personally my favourite is the top one as I like the vibrant colours I used.



The image shows two pages from a calligraphy book. The left page features the word 'Ruby' in a large, elegant cursive script. Below the text is a dark grey rectangular card with a white tag attached by a string. The tag has the word 'Ruby' written on it in a smaller cursive script. The right page features the word 'Silvius' in a similar cursive script. Below the text is a dark grey rectangular card with a white tag and a blue tag attached by a string. The white tag has the word 'Silvius' written on it, and the blue tag has a small illustration of a tree and the word 'Silvius' written on it.



Ruby Sivovics is a visual Artist and Graphic designer based in New York. Her work is experimental. Pieces use recycled materials and fabrics. One of her main pieces is known as 365 days of tea. She uses tea bags to create paintings, drawings and prints. Sivovics has traveled to Europe and Asia, exhibiting internationally. She is a graduate of the Corvallis Community College. Tea bag art is inspired by reflecting the medium of traditional and contemporary Japanese culture. In July 2014, Sivovics exhibited her work in Greece as a result of a culturally immersive art residency program in Crete.



Angie

Angie Lewin

Angie Lewin's work is about contrasting environments and native flora. She is inspired by both the clifftops, the saltmarshes of the North Norfolk coast and the Scottish Highlands.

Angie's landscape
often glimpsed
intricately de
plant forms.

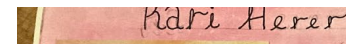
Angie Lewin uses a varying collection of layers, textures, printing, block, colour, contrast and line.

The element
I like most
about her work
is the variety
of colours and
patterns as
they create depth
in her work.

Lewin

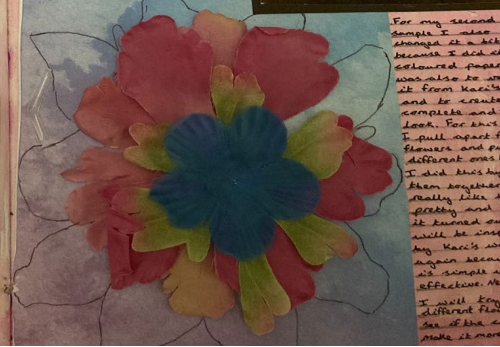
...not controller
...particular hot that has
...her search...

Angie has inspired my drawings because she uses a range of contrasting textures and different lines. I like her pieces because of the variety of colours.

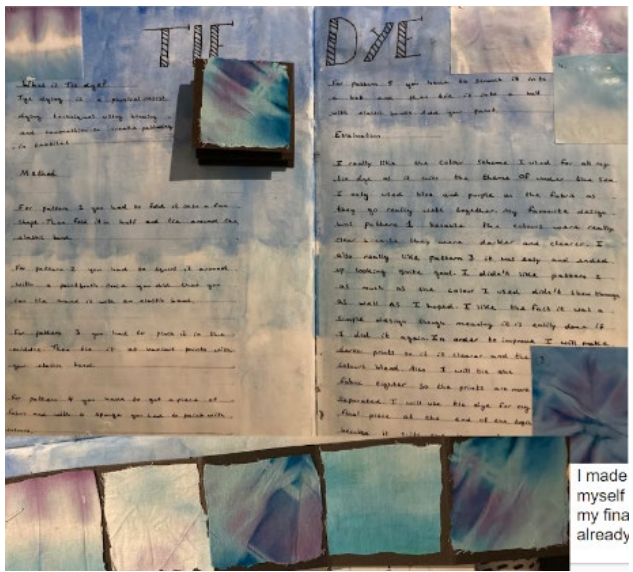


I chose to research about the artist Hans Hoyer because it fit into my theme of nature and wildlife and his work is inspiring. In his piece, *the wind - flower* as her head like her around it with the, she exaggerated the petals by drawing bright petals behind the actual flower. The flower is quite like her drawing is in black and white. This creates a dramatic movement and a strong contrast in colour. The shapes she included were simple and natural looking. The lining is very fine and simple. This piece reminds me of the beautiful aspects and effects of nature. The thing that interests me the most is how half the art is 3D and half is 2D. This makes it asymmetrical in shape and natural looking. The petals seem to be more than her drawing of the petals. The picture is very simple and elegant. The actual flower seems closer to me than her drawing of the flower. The picture is very simple and elegant. The actual flower seems closer to me than her drawing of the flower. The picture is very simple and elegant. The actual flower seems closer to me than her drawing of the flower.

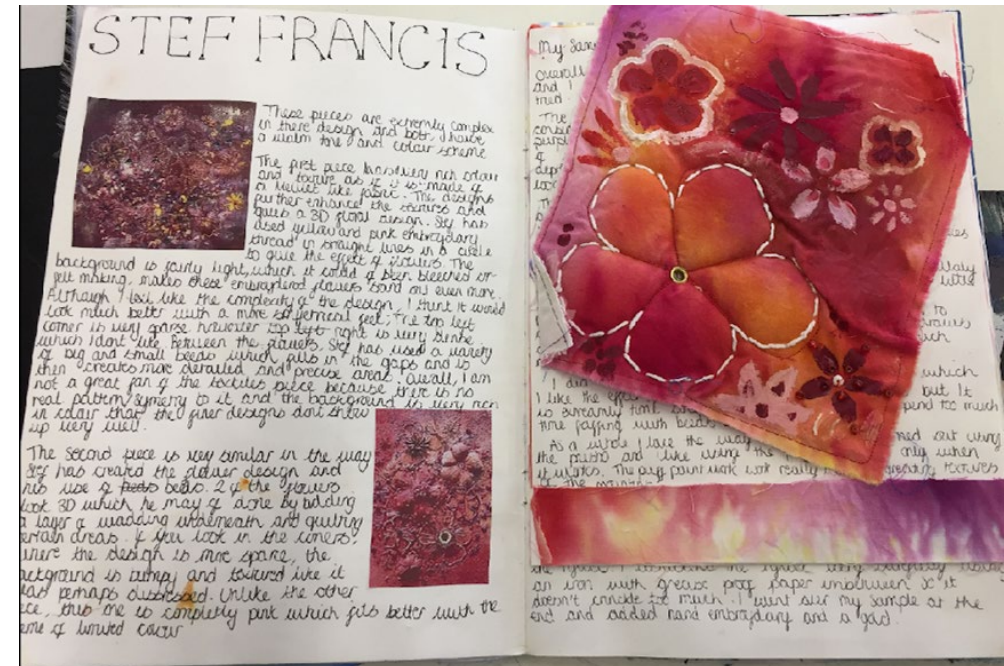
Samples

[illegible]

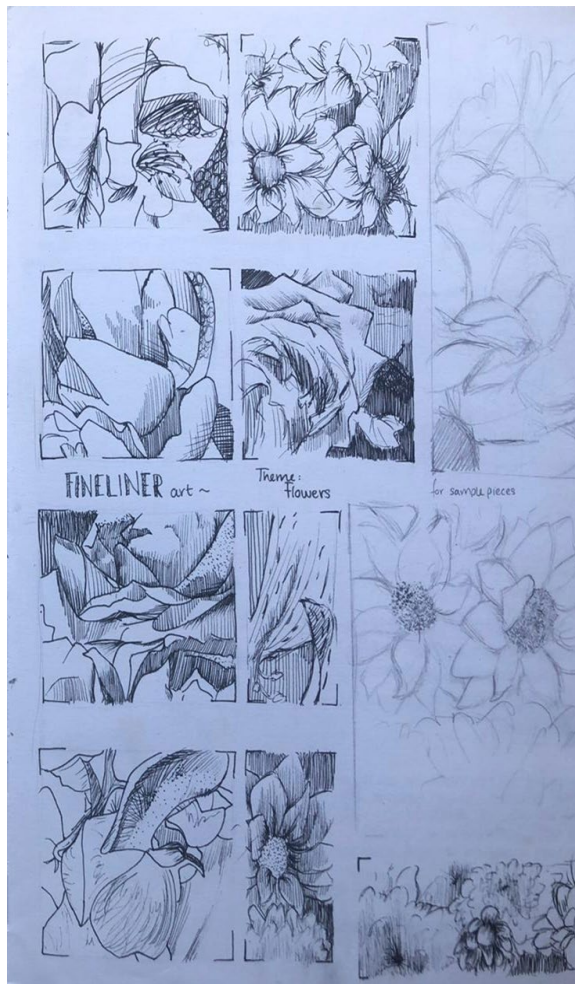
A02-Experimenting.



Explaining your ideas, plans and methods is a crucial part of your progress. It helps us understand how your work has developed from research, to samples to a final piece.



A03-Recording your ideas.



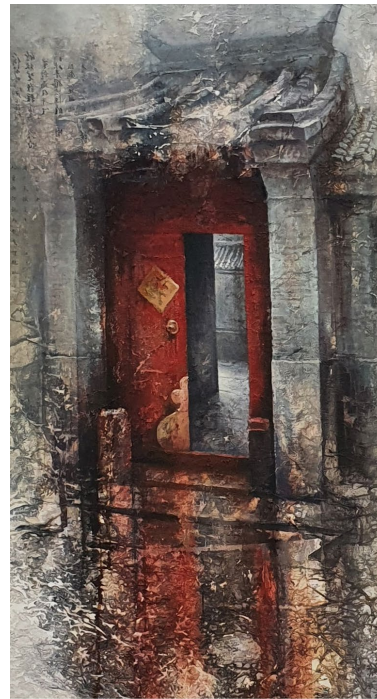
Your sketchbook will be used for observational drawing, taking photographs and developing your designs and ideas into plans for final pieces.

A04—Final piece.



Visiting artist Ian Murphy. GCSE high achievers workshop days.

20 of our highest
achievers are invited
to our 2 day
workshop with Ian.
It is a fantastic
opportunity to learn
from an established
artist.



Conway – Residential

