



Year 9
Guided Options
Booklet 2022





Guided Options 2022

The KS4 Curriculum

This booklet is designed to provide you with information about the core curriculum (the subjects you have to take) and to help you make your choices for KS4. It is important that you take time to think everything through very carefully. You will be supported through this process by a sequence of events that are designed to help you make the best possible decisions for you as an individual.

How do qualifications work at KS4?

There are two main types of qualification; GCSEs and Level 2 Vocational qualifications. GCSEs have been updated so most rely on formal linear exams at the end of year 11. GCSEs are graded 1 to 9, with 9 being the top grade. A grade 4 is a 'standard pass', similar to what was a C grade. A grade 5 counts as a 'strong pass', similar to what was the top of grade C and bottom of grade B. A grade 7 is similar to a grade A.

Level 2 Vocational qualifications such as BTECs and Cambridge Nationals are assessed through portfolios of coursework and formal exams. They are ideal if you have a strong interest in the subject area and enjoy project based work. Level 2 vocational qualifications are graded pass, merit and distinction. With these courses you need to work consistently throughout year 10 and 11. The work you complete every lesson will contribute towards your final grade, therefore good attendance is essential.

Other things you need to consider

Progress 8 is the national measure which has replaced the traditional 5 A*-C. Eight GCSEs across a range of subjects are normally needed to progress to post 16 study or apprenticeships. Our curriculum plan for you already takes this 'Progress 8' benchmark into account. The majority of local college offers are based around the average of your best 8 grades.

The English Baccalaureate (Ebacc) is a student performance measure the government introduced in order to promote a breadth of academic study. This was introduced to address gaps in student knowledge as they progressed to university. Evidence shows that studying the Ebacc suite of subjects increases the chances of a student progressing successfully to further education. Consequently, we have designed our options process to ensure that all students study the Ebacc, but still have plenty of subject choice. To achieve the Ebacc you need to attain at least a grade 4 in; English, Maths, Science (two qualifications), Geography or History and a Modern Foreign Language e.g. French, German or Spanish.

Some subjects should not be taken together

Art, Textiles or Graphics should not both be chosen together as there is a considerable amount of overlap between the courses, therefore only one will count towards the progress 8 measure. We ask you to select four option choices, plus two reserve choices. The majority of students are able to study their first choices. However, there are occasions when a course cannot run because the number of students opting for the course is too low or because the course is not on the list of DFE approved qualifications for 2024, this list is yet to be published. In this case students will be able to study one of their reserve choices instead.



STEM Education at Great Sankey Science, Technology, Engineering and Maths:

“[Science] is more than a school subject, or the periodic table, or the properties of waves. It is an approach to the world, a critical way to understand and explore and engage with the world, and then have the capacity to change that world...”

— President Barack Obama, March 23, 2015

STEM Subjects (Science, Technology, Engineering and Maths) are crucial subjects for the world today. For our students to be successful, they will be judged not only on what they know, but by what they can do with what they know. Students need the knowledge and skills to solve tough problems, gather and evaluate evidence, and make sense of information.

At Great Sankey High School we have a long history of success in STEM subjects and boast an alumni who are enjoying STEM careers or are studying STEM subjects at University.

In 2020 over 20% of our year 13 students left us to study STEM courses at University including:

- Medicine (University of Nottingham)
- Mathematics (University College London, University of Manchester, Kings College, MMU, JMU, Sheffield Hallam, Reading)
- Biomedical Science, Biochemistry, Biological sciences, Chemistry, Computer science, Midwifery, Nursing and Civil Engineering.

We have a very high take up for STEM subjects at A level.

STEM courses at Key Stage 4

Separate Science GCSEs - Biology , Chemistry & Physics Combined Science - Trilogy GCSE
Maths GCSE
Design and Technology GCSE
Electronic Products GCSE
Computing
Cambridge National in IT Health and Social Care

STEM courses at Key Stage 5

A levels in:

Biology, Chemistry, Physics, Further Maths, Maths, Product Design, Computing & ICT

Level 3 BTEC Courses in:

Applied Science, Health and Social Care

Many of our Extended Project Qualification (EPQ) students complete a STEM-based research project.

Enrichment

Students in years 7-11 take part in various STEM enrichment activities such as our thriving STEM and Science Club, Maths Challenges, VEX Robotics and Lego Challenge and numerous visits and trips including 'Science Live lectures, the Big Bang Fair and external Competitions.

How Do I Choose?

Try to choose subjects...

That you think you will enjoy and feel you are good at.

That you may need for future education and/or your career.

That you are most likely to work enthusiastically in and succeed at.

That provide a balance and variety. By keeping a balance at this stage, you will not restrict future options.

Talk to parent(s), carer(s), subject teachers, careers staff and students who are in KS4 and are studying the particular subject.

DO read the subject details in this booklet carefully and ask if you need to know more.

DO opt for a balanced choice of subjects to keep future careers and study options open.

DON'T choose a subject just because you like a particular teacher (or avoid a subject because you dislike a teacher) - it is likely you will have a different teacher next year.

DON'T choose a subject just because your friends are choosing it. You are deciding about your future and your friends may not be in the same group as you.

Core Subjects





What is studied at GCSE?

The majority of students will all follow a similar pathway resulting in examinations in English Language and English Literature (2 separate GCSEs).

Why choose this course?

GCSE English language/Literature is a core subject and a compulsory component of the GCSE courses.

GCSE English Language

Students will be assessed via two terminal written and a Spoken Language assessment; all will be completed in the summer of Year 11. Our exam board is AQA.

Paper 1: Explorations in creative reading and writing

Exam: 1 hour 45 minutes
50% of English Language GCSE

Section A (50%): Reading

Four questions on an unseen extract from either 20th or 21st century fiction.

Section B (50%): Prose Writing

Candidates will be offered a choice of two creative writing tasks, giving students opportunities for writing to describe and narrate. There will be a picture provided a stimulus for this imaginative writing.

Paper 2: Writers' viewpoints and perspectives

Exam: 1 hour 45 minutes
50% of English Language GCSE

Section A (50%): Reading

Four questions on two high-quality unseen non-fiction texts, one from the 19th century, the other from the 20th or 21st century.

Non-fiction texts may include; letters, leaflets, extracts from autobiographies or biographies, diaries, reports, articles, and blogs.

Section B (50%): Writing

Students will be given a statement and asked to write an extended piece of transactional writing, expressing their opinion in relation to the statement.

Component 3: NEA Spoken Language Endorsement

Unweighted

Candidates will be required to complete a formal presentation or speech and respond to a series of questions or feedback.

Achievement in Spoken Language will be reported as part of the qualification, but it will not form part of the final mark and grade. Students will be awarded a pass, merit or distinction for this endorsement.



GCSE English Literature

In GCSE English Literature we will encourage learners to develop knowledge and skills in reading, writing and critical thinking. Assessment will again be via two terminal examinations in the summer of Year 11.

Component 1: Shakespeare and Poetry

Written examination: 2 hours

40% of GCSE

Section A (20%) Shakespeare

Romeo and Juliet; OR Macbeth; OR Othello; OR Much Ado About Nothing; OR Henry V; OR The Merchant of Venice.

One extract question and one essay question based on the reading of a Shakespeare text from the above prescribed list.

Learners are not permitted to take copies of the set texts into the examination.

Section B (20%): Poetry from 1789 to present day

Two questions based on poems from the WJEC Eduqas Poetry Anthology, one of which involves comparison.

Component 2: Post-1914 Prose/Drama, Century Prose and Unseen Poetry

Written examination: 2 hours 30 minutes

60% of GCSE

Section A (20%) A - (20%) Post-1914 prose/drama

Lord of the Flies (Golding); OR Anita and Me (Syal); OR Never Let Me Go (Ishiguro); OR The Woman in Black (Hill); OR Oranges are not the Only Fruit (Winterson); OR The Curious Incident of the Dog in the Night Time (play script) (Stephens); OR A Taste of Honey (Delaney); OR An Inspector Calls (Priestley); OR The History Boys (Bennett); OR Blood Brothers (Russell)

One source-based question on a post 1914 prose/drama text from the above prescribed list.

Learners are not permitted to take copies of the set texts into the examination.

Section B (20%) 19th century prose

A Christmas Carol (Dickens); OR Silas Marner (Eliot); OR Pride and Prejudice (Austen); OR War of the Worlds (Wells); OR Jane Eyre (Brontë); OR The Strange Case of Dr Jekyll and Mr Hyde (Stevenson)

One source-based question on a 19th century prose text from the above prescribed list.

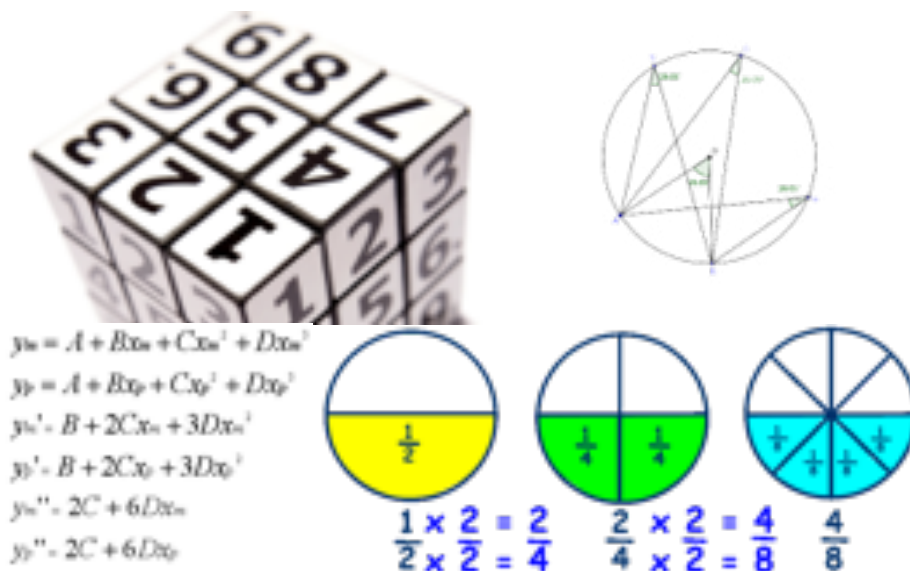
Learners are not permitted to take copies of the set texts into the examination.

Section C (20%) Unseen poetry from the 20th/21st century

Two questions on unseen poems, one of which involves comparison.

Sankey Extra

Students can supplement their skills with the weekly revision and intervention sessions offered within the department. They may also join the Media and Website club or the Zine Team. Students could also get involved in the many competitions that are run throughout the year or join us on one of our exciting theatre trips.



Why choose this course?

GCSE Mathematics is a core subject and a compulsory component of the GCSE courses.

Will I enjoy it?

It is a key focus of the Mathematics Department at GSHS that learners are supported and encouraged to achieve the best that they can. Although at GCSE it can be challenging on occasions, it is the enjoyment of being successful that should spur learners on.

What will I study?

The new GCSE Programme of Study splits the course into six elements:

1. Number	2. Algebra	3. Ratio, proportion and rates of change
4. Geometry and measures	5. Probability	6. Statistics

How will I be assessed?

The examinations for GCSE Mathematics will consist of three, 1½ hour exams. **Paper 1** will be a non-calculator paper, whilst **Papers 2 and 3** will be calculator papers. Each paper will be worth 80 marks and all three will be sat in the summer of 2022. There is no coursework or controlled assessment. The new papers will be also be structured so that there will be a greater emphasis on material at the higher grades of the tier being taken.

How can I progress?

Apart from A-Level Mathematics and Further Mathematics, learners will also need certain grades in the subject in order to begin other post-16 courses.

The Government has also asked for a range of new post-16 qualifications in applied areas of Mathematics to be developed and offered in the near future, including the new Level 3 Core Mathematics qualification.

Sankey Extra

Students can supplement their skills via areas such as the weekly Drop-In Support Sessions in the Mathematics Department or the GCSE Statistics and AQA Level 2 Further Mathematics courses, which prepares high achievers for A-Level Mathematics.



Why is the subject part of the core curriculum?

Within PSHE we now teach economic wellbeing, financial capability and an understanding of British values and character education through looking at virtues, skills and qualities needed to be a success in life. This non-statutory programme of study brings together careers education, work-related learning, enterprise and financial capability. PSHE will help learners become confident, healthy and independent individuals. This framework has three elements:

- Developing confidence and responsibilities and making the most of their abilities.
- Developing healthy lifestyle.
- Developing good relationships and respecting the differences between people.
- Promote the spiritual, moral, cultural, mental and physical development of pupils at the school and of society.
- Prepare pupils at the school for the opportunities, responsibilities and experiences of later life.

What will I study?

Health and wellbeing including drugs and alcohol education, career development and future choices, study skills, identity and diversity, human rights, democracy and managing personal finance.

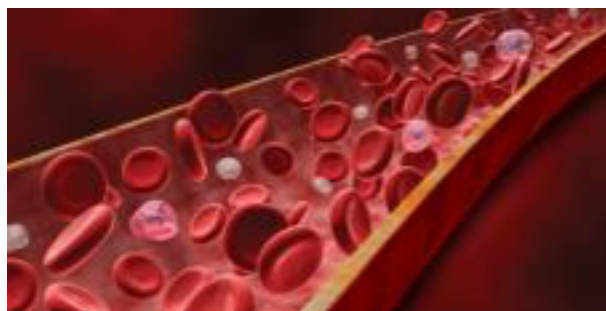
How will I be assessed?

To be a successful independent student, children and young people need regular opportunities to reflect on and identify what they have learnt and what they need to do to continue their learning. This may be to compare their progress against their own starting point or that of others, or to measure their progress with reference to an external standard, such as end of key stage indicators.

Their form tutor will be clear about the progress and achievements of the children and young people they teach, and how their learning might be improved.

Sankey Extra

PSHE takes place in form time in order for you to build relationships within your form and with your form tutor who will support you through KS4.



Why choose this course?

GCSE Science is a compulsory component of the GCSE courses.

Will I enjoy it?

Although the separate sciences course is indeed challenging, pupils often thrive on that challenge, with the competition for places on this course high.

What will I study?

All pupils will study Biology, Chemistry and Physics with three specialist teachers.

Units of work include;

Biology	Chemistry	Physics
Cell biology	Atomic structure and the periodic table	Forces
Organisation	Bonding and the structure of matter	Energy
Infection and response	Quantitative chemistry	Waves
Biogenetics	Chemical and energy changes	Electricity
Homeostasis and response	Organic chemistry	Magnetism and electromagnetism
Inheritance, variation and evolution	Chemical analysis	Particle model of matter & space physics
Ecology	Chemistry of the atmosphere	Atomic structure

How will I be assessed?

There is no controlled assessment element, rather with a set of key practicals that pupils must carry out over the 2 years. There will be questions on these practicals on the exam papers.

There will be 6 exam papers, 2 in each subject. Each paper will last 1 hour and 45 mins and will have 100 marks.

There will be both foundation and higher tiers.

Each of the individual separate science qualifications will be graded 9-1.

How can I progress?

We offer a wide selection of courses at KS5 including;

Biology, Chemistry, Physics, Health and Social Care level 3 BTEC (both single and double awards) and Applied Science Level 3 BTEC and Childcare Level 3 BTEC.

Sankey Extra

Students can supplement their skills by attending the weekly Drop-In Support Sessions on Wednesdays in the college building.

Students can also help lead activities in our STEM club, working with the younger pupils in KS3.



Why choose this course?

GCSE Science is a compulsory component of the GCSE courses.

Will I enjoy it?

Although compulsory, pupils often enjoy the variety of topics covered in the 3 science subjects.

What will I study?

All pupils will study Biology, Chemistry and Physics with three specialist teachers.

Biology	Chemistry	Physics
Cell biology	Atomic structure and the periodic table	Forces
Organisation	Bonding and the structure of matter	Energy
Infection and response	Quantitative chemistry	Waves
Biogenetics	Chemical and energy changes	Electricity
Homeostasis and response	Organic chemistry	Magnetism and electromagnetism
Inheritance, variation and evolution	Chemical analysis	Particle model of matter
Ecology	Chemistry of the atmosphere	Atomic structure

How will I be assessed?

There is no controlled assessment element rather with a set of key practicals that pupils must carry out over the 2 years. There will be questions on these practicals on the exam papers.

There will be 6 exam papers, 2 in each subject. Each paper will last 1 hour and 15 mins and will have 70 marks. There will both foundation and higher tiers.

Pupils will be awarded 2 qualifications and the course has a 17-point grading scale from 9-9, 9-8 through to 2-1, 1-1.

How can I progress?

We offer a wide selection of courses at KS5 including;

Biology, Chemistry, Physics, Health and Social Care level 3 BTEC (both single and double awards) and Applied Science Level 3 BTEC and Childcare Level 3 BTEC.

Sankey Extra

Students can supplement their skills by attending the weekly Drop-In Support Sessions on Wednesdays in the college building.

Students can also help lead activities in our STEM club, working with the younger pupils in KS3.



Why choose this course?

More than 300 million people speak French on the five continents. French is the second most widely learned foreign language after English, and the fifth most widely spoken language in the world. French is both a working language and an official language of the United Nations, the European Union, UNESCO, NATO, the International Olympic Committee, the International Red Cross and international courts. France is the world's top tourist destination and attracts more than 87 million visitors a year.

The ability to speak French and English is an advantage on the international job market. As one of the world's largest economies and a leading destination for foreign investment, France is a key economic partner. It is also becoming increasingly common for universities to specify a languages qualification as a requirement for entry.

NOTE: You can only choose French for GCSE if you have studied it in Years 7-9.

Will I enjoy it?

Yes! If you are willing to rise to the challenge and put in the effort you will make progress very quickly and find your study of French language and culture very rewarding. Lessons are interactive and there is a strong emphasis on encouraging you to speak and understand French confidently. You should be prepared to participate in lessons, and to learn vocabulary at home, in order to ensure examination success.

What will I study?

The course is topic-based and has 4 components: Listening, Reading, Speaking and Writing. The topics covered build on and expand what you have already studied at KS3. There are three themes:

Theme 1: Identity and Culture

Theme 2: Local, national, international and global areas of interest

Theme 3: Current and future study and employment

How will I be assessed?

Paper 1 Listening (25%) - Foundation 30 mins / Higher 45 mins

Paper 2 Speaking (25%) – Foundation 7-9 minutes / Higher 10-12 minutes + preparation time

Paper 3 Reading (25%) - Foundation 45 mins / Higher 1 hour

Paper 4 Writing (25%) - Foundation 1 hour / Higher 1 hour 15 minutes.

There is no longer any coursework or controlled assessment. All four skill areas will be examined at the end of Year 11

How can I progress?

A variety of revision materials, after school 'skills practice' sessions and assessment clinics will be provided to ensure that you are well supported throughout the course. After studying at GCSE, you may decide to continue with French at A Level. This qualification is very highly regarded by universities and employers, as students who study a language are known to have highly developed communication and verbal reasoning skills. Further to this, many universities offer degrees in which you can combine the study of French with other interests. From here, a wide range of employment opportunities will be open to you worldwide! Remember: languages are a skill for life.



Logos of the world's most admired companies Fortune 2000 - France



Sankey Extra

Our Year 11 students often accompany the Year 9 French trip in a student leader capacity. This gives you the opportunity to have a position of responsibility and to develop your own language skills. You may also want to take part in planning and delivering activities in the Year 7 MFL Club.

You live a new life for every new language you speak. If you know only one language, you live only once. - Eastern European proverb



Why choose this course?

Germany is a country of world-class engineering and science, of music and culture, and also of amazing natural beauty. Learning another language is the best way to really get to know and understand other countries and their culture.

More people speak German as their native language than any other language in Europe. It's no wonder, since Germany's 83 million inhabitants make it the most populous European nation. It is also an official language of Austria, Switzerland, Luxembourg, and Liechtenstein.

Germany has the third largest economy in the world and is the economic powerhouse of the European Union. Germany's economic strength equals business opportunities. Companies like BMW, Daimler, Siemens, Lufthansa, Bosch, and many others need international partners. German companies account for 700,000 jobs in the United States, and US companies have created approximately the same number of jobs in Germany.

Germany is the country of innovators! As a nation committed to research and development, Germans are on the frontline of new technologies. Germany exports more high-tech products than any other country except the U.S.

NOTE: You can only choose German for GCSE if you have studied it in Years 7-9.



Will I enjoy it?

Of course! You will find your study of German language and culture very rewarding and enjoyable if you are prepared to rise to the challenge and put the effort in. Lessons are interactive and have a strong focus on communication. You should be prepared to participate in lessons, and to learn vocabulary at home, in order to ensure examination success.

What will I study?

The course is topic-based and has 4 components: Listening, Reading, Speaking and Writing. The topics covered build on and expand what you have already studied at KS3. There are three themes:

Theme 1: Identity and Culture

Theme 2: Local, national, international and global areas of interest

Theme 3: Current and future study and employment

How will I be assessed?

Paper 1 Listening (25%) - Foundation 30 mins / Higher 45 mins

Paper 2 Speaking (25%) – Foundation 7-9 minutes / Higher 10-12 minutes + preparation time

Paper 3 Reading (25%) - Foundation 45 mins / Higher 1 hour

Paper 4 Writing (25%) - Foundation 1 hour / Higher 1 hour 15 minutes

There is no longer any coursework or controlled assessment. All four skill areas will be examined at the end of Year 11

How can I progress?

Revision materials, both online and more traditional, as well as after school revision and catch-up classes will be provided to ensure that you are well supported throughout the course. You will be given practice papers right from the beginning so that you feel well prepared and know exactly what the expectations are. After studying at GCSE, you may decide to continue to study German at A Level. Students who study a language have highly developed communication and verbal reasoning skills and are highly regarded by future employers. Remember: language skills are for life!

Sankey Extra

You will be able to participate in the study trip to Germany and experience the country and its people first-hand. Trying out your new skills will be fun and a fantastic experience which will motivate you even more to take your German to the next level. You may also want to take part in planning and delivering activities in the Year 7 MFL Club.

You live a new life for every new language you speak. If you know only one language, you live only once. - Eastern European proverb



What will I learn in RS?

The course is split in to two parts:

1. The study of Religions

Beliefs and teachings: This section focuses on the specific beliefs and teachings of a religion. For example, beliefs about God and the roles of Jesus and Muhammad.

Practices: This section looks at the way the religious beliefs affect the lives of believers. For example, the Five Pillars of Islam, worship and pilgrimage.

2. Thematic Studies

Religion and Life: Animal rights, abortion, euthanasia, origins of life

Crime and Punishment: Causes of crime, aims of punishment, the death penalty, the treatment of criminals

Peace and Conflict: Causes of war, terrorism, nuclear weapons, pacifism

Relationships and Family: Marriage, divorce, sexuality, contraception

What are RS lessons like?

Every lesson will be different depending on the topic being covered. Some lessons will be more discussion based whilst others will include more written tasks.

Activities in class include discussions, debates, role play, presentations, internet research, group work, interpreting images and a variety of written tasks.

How is the course assessed?

There will be two 1hr 45 min exams at the end of Year 11.

What course / career can RS lead to?

In short, lots! A GCSE in RS will open up a number of doors to you whether you stay on at Barrow Hall College, move somewhere else to continue your studies or go straight into a job. RS shows that you can think for yourself, take an interest in the world around you and accept other people's beliefs and attitudes.

Careers that RS can lead to are:

Health care, child care, medicine, psychologist, customer services, law, police, psychology, public services, management, teaching, social work and archaeology.

Sankey Extra

Staff are GCSE examiners and have the understanding of the course to enable you to get top grades



Why choose this course?

After Mandarin, Spanish is spoken by more people than any other language in the world today. Spanish embraces a wealth of cultures since as well as Spain, it is spoken across Latin America and there are even 53 million Spanish speakers in the USA. With an ever increasing presence in the global market, emerging economies in Latin America are providing job opportunities for people with a knowledge of Spanish. More and more universities are asking for a qualification in a language as a basic entry requirement for a range of courses. Careers in business, marketing, journalism, law and the tourist industry all demand good communication skills, and the ability to speak a foreign language will give you the edge when applying for jobs. Languages combine well with all other subjects at GCSE.



NOTE: You can only choose Spanish for GCSE if you have studied it in Years 7-9.

Will I enjoy it?

Yes! Learning a language at GCSE is a really satisfying and fulfilling experience. Lessons include a variety of activities and include plenty of opportunities for you to communicate in Spanish allowing you to develop your speaking skills with confidence. The nature of the subject means that pairwork and groupwork form an essential part of the structure of the lessons. Outside of the classroom you will be encouraged to use a range of internet resources to support your learning but also your language skills will flourish by listening to Spanish music and watching Spanish series on streaming channels.

What will I study?

The course is topic-based and has 4 components: Listening, Reading, Speaking and Writing. The topics covered build on and expand what you have already studied at KS3. There are three themes:

Theme 1: Identity and Culture

Theme 2: Local, national, international and global areas of interest

Theme 3: Current and future study and employment

How will I be assessed?

Paper 1 Listening (25%) - Foundation 30 mins / Higher 45 mins

Paper 2 Speaking (25%) – Foundation 7-9 minutes / Higher 10-12 minutes + preparation time

Paper 3 Reading (25%) - Foundation 45 mins / Higher 1 hour

Paper 4 Writing (25%) - Foundation 1 hour / Higher 1 hour 15 minutes

There is no longer any coursework or controlled assessment. All four skill areas will be examined at the end of Year 11

How can I progress?

After studying at GCSE, you may decide to continue to study Spanish at A Level. This is a highly regarded qualification by universities and employers as it is recognised that students who study a language have highly developed communication and verbal reasoning skills. Further to this, many universities offer degrees in which you can combine the study of Spanish with other interests.

Sankey Extra

You may be able to participate in the study trip to Spain, and experience the country and its people first-hand. At school, you may also want to take part in planning and delivering activities in the Year 7 MFL Club. You live a new life for every new language you speak. If you know only one language, you live only once.” - Eastern European proverb

Option Subjects





Why choose this course?

GCSE ART & DESIGN is a creative, practical and rewarding subject. It will give you the chance to develop your painting and drawing skills and work with a wide range of art materials, techniques and processes. It will provide an excellent foundation to study all A level art-based subjects.

Will I enjoy it?

If you are passionate about all aspects of ART & DESIGN, work hard and love the subject you will enjoy it as there is more scope to study your own areas of interest and make links to work that you have seen in galleries and exhibitions. There are regular after school clubs where you can get more help if needed.

What will I study?

You will research the work of other artists and designers and develop your own independent ideas about their work. Your artist research and analysis forms an important part of your progress by providing inspiration from looking at the work of established artists. You will keep a sketchbook of all your ideas over the two years and this will show your development of projects from initial ideas and studies through to planning for final pieces of work. There will be a strong emphasis on observational drawing techniques and you will then develop your drawings and ideas using a range of materials, including painting. There will be the opportunity to work with a wider choice of materials and techniques than you have done at KS3.



How will I be assessed?

60% of final GCSE grade is based on coursework portfolio produced over the 2 years. 40% of final grade is based on final exam project that begins in January of year 11. Exam papers are issued during the first lesson after 1st January.

How can I progress?

Work hard from the start of September in year 10, as all work can contribute towards your final grade.

Be interested in the subject and show an interest in visiting galleries and exhibitions.

Come along to after school art club.

Be willing to try out new materials, techniques and processes.

You can progress onto A Level Art at Barrow Hall College.

Sankey Extra

You will regularly discuss your work on an individual basis with your teacher and be set individual tracking targets to help you make accelerated progress. If you act on this advice, you will make excellent progress. You can take art & design as well as the textile design option.



Why choose this course?

This course will help you to develop as a commercially minded and enterprising individuals. You might have the dream of starting your own business or you might just be very interested in the business down the road or global Giants like Google, Facebook and BMW.

Will I enjoy it?

You will enjoy this course if you like business. Here is a good test: Watch some clips from the Apprentice and Dragons' Den; if you found them boring then this is not for you. Your lessons will be filled with interesting activities but you must realise that there is also theory to cover. The best students are those that follow business stories outside of lessons and can link their learning to topical events.

What will I study?

- Enterprise and entrepreneurship.
- Spotting a business opportunity.
- Putting the idea into practice.
- Making a business effective.
- External influences on business.
- Growing the business.
- Marketing decisions-Price. Place. Product, and Promotion.
- Operational decisions.
- Financial decision making.
- Human resources – recruiting, motivating, training.

How will I be assessed?

All the exams are at the end of Year 11. They are a mixture of short, medium and long written questions. You will be expected to do some calculations. The world of business is full of numbers – do not forget this! There is no coursework.

How can I progress?

After completing the course students are able to go onto the A level Business, Economics courses or one of the Level 3 BTEC courses that are available e.g. BTEC Business.

Sankey Extra

Student Investor game. Guest speakers.

Creative Media Production

BTEC Tech Award



Why choose this course?

This course is designed to inspire and enthuse learners to consider a career in the creative digital media sectors, rather than just to participate in media recreationally, for example surfing the web or playing video games. It will also give learners the opportunity to gain a broad knowledge and understanding of, and develop skills in, the creative digital media industry, e.g. moving image, audio-production, games design, website design and publishing. The course will support progression to a more specialised level 3 vocational or academic media qualification or an apprenticeship. It will give learners the potential opportunity, in due course, to enter employment within a wide range of junior job roles across the creative digital media sectors, for example photographer, sound- recordist, editorial assistant, assistant web designer and assistant games designer.

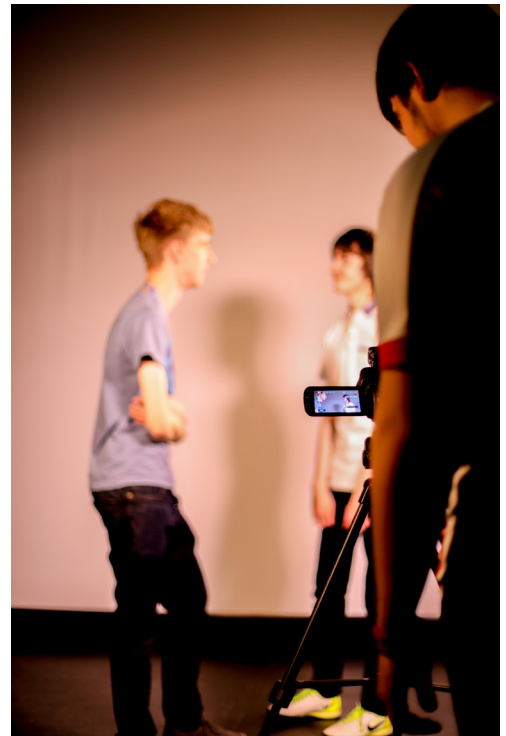
Will I enjoy it?

If you enjoy working practically, in teams, creatively and have an interest in how the Media industry works, then yes!

What will I study?

The Award gives learners the opportunity to develop sector-specific knowledge and skills in a practical learning environment. The main focus is on three areas of equal importance, which cover the:

- knowledge that underpins the effective use of skills, processes and attitudes, including production processes and techniques
- development of key skills that prove aptitude in creative media production, such as investigating and developing ideas through pre-production, production and post-production of media products
- processes that underpin effective ways of working in creative media production, such as responding to briefs and feedback, planning and generating ideas.



Components.

Component 1: Exploring Media Products

36 Guided Learning hours (30% of assessment)

Assessment type: Internal

Component 2: Developing Digital Media Production Skills

36 Guided Learning hours (30% of assessment)

Assessment type: Internal

Component 3: Create a Media Product in Response to a Brief

48 Guided Learning hours (40% of assessment)

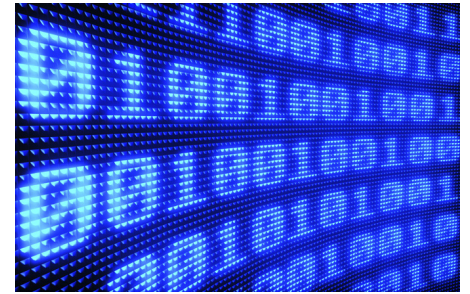
Assessment type: Synoptic External

How can I progress?

The Pearson BTEC First Award in Creative Digital Media Production provides the knowledge, understanding and skills for Level 2 learners to progress to: other Level 2 vocational qualifications, Level 3 vocational qualifications, such as BTEC Nationals, specifically the BTEC Level 3 in Creative Media Production, related academic qualifications, employment within the creative digital media industry, such as junior roles working in moving image production, audio production, publishing, website production or digital games production.

Sankey Extra

Throughout the duration of the course you will be given the opportunity to work with industry standard software, a range of camera equipment, and a full time technical instructor.



you see yourself in a computer science related job such as a software developer, web developer or game designer? Or do you just really enjoy it? If you can answer “YES” to any of these questions, then this course is for you!

The GCSE in Computer Science is engaging and practical, encouraging creativity and problem solving. It encourages students to develop their understanding and application of the core concepts of computer science. Students also analyse problems in computational terms and devise creative solutions by designing, writing, testing and evaluating programs.

Computer systems (01) – introduces students to the central processing unit (CPU), computer memory and storage, wired and wireless networks, network topologies, system security and system software. It also looks at ethical, legal, cultural and environmental concerns associated with computer science.

Computational thinking, algorithms and programming (02) - Students apply knowledge and understanding gained in component 01. They develop skills and understanding in computational thinking: algorithms, programming techniques, producing robust programs, computational logic, translators and data representation. The skills and knowledge developed within this component will be applied practically through the programming language of Python.

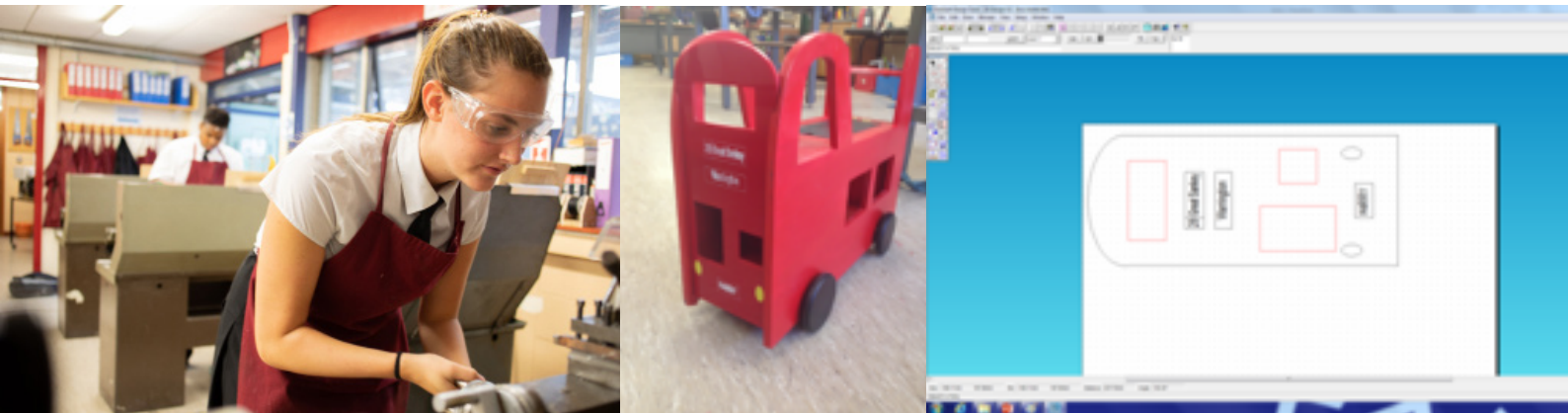
Practical Programming – All students will be given the opportunity to undertake a programming tasks, during their course of study. Students will draw on some of the content in both components when engaged in Practical Programming. This will allow the students to develop their learning in a practical environment.

Computational thinking, algorithms and programming (02) - 1 hour and 30 minute written exam, externally marked (50% of GCSE).

Programming project (03) – This is not assessed as it not part of the weightings of the GCSE.

Engaging in lessons, completing outside class learning and asking questions. If you are unsure or want to know more about a topic, your teacher will always assist. You should have a keen interest in learning to code and be developing your programming skills in language such as Python. After successfully completing GCSE you can progress onto A Level Computer Science or BTEC Computing at Barrow Hall College.

As well as being able to progress to college and university to study computing related courses, the industry is ever expanding with the increased use of technology. There are plenty of apprenticeship and job opportunities available in web development, software development and social media field.



Why choose this course?

This course allows you to develop your knowledge and understanding of all aspects of Design and Technology. You will learn about different materials, tools and processes. You will develop a wide range of practical skills and also understand how these products have evolved over time to produce the products we use in our everyday lives.

Will I enjoy it?

Yes, this course will give you the opportunity to develop skills in making high quality products using woods, metal and polymers (plastics). You will be expected to make a range of products, prototypes and samples, applying technical and practical expertise to ensure that the product is fit for purpose. You will combine traditional skills and modern technologies. You will gain lots of experience in using different types of CAD/CAM software and be able to use a number of machines including the laser cutter.

What will I study?

The course content enables students;

- To develop a broad knowledge of materials, components and processes.
- To develop practical skills to produce high quality functional prototypes and products.
- To develop decision making skills through both independent, team and collaborative work.
- To be able to read, interpret and work from drawings, plans and instructions.
- To be able to produce working drawings and produce production plans.

How will I be assessed?

A written exam (worth 50%). Topics covered are Core and Technical Principles, Specialist Technical Principles and Designing and Making Principles. There is also a Non-exam assessment, which consist of a coursework portfolio and the making of an actual product (worth 50%).

How can I progress?

You can continue onto A Level Product Design in Barrow Hall College. If you decide to go onto University after college and you want to study a variety of design or manufacturing courses, then this award will help you. If not, and you decide to leave school to get an apprenticeship, this course will be useful as it also develops many transferable skills including communication and collaboration as well as hands on practical skills and knowledge of CAD/CAM.

Sankey extra

Students will be given extra support in their studies if required, we offer plenty of extra sessions after school and we are always here to offer additional guidance should you require it. We will arrange a number of trips to various local companies to show how products are actually made.

Why choose this course?

GCSE Drama is an exciting creative and predominantly practical course. It will give you the opportunity to develop your exploration skills, to approach work creatively as an actor, director or designer and will enhance your powers of analysis to become an informed theatre critic. You will work in a range of genres, styles and use a wide range of techniques to explore both off-text and script work. The course provides an excellent base to study an A Level in Theatre Studies.

Will I enjoy it?

If you are passionate about Theatre, you love being challenged creatively and commit to your work 100% then you will gain much from this subject. You will be able to explore aspects of the world around you that you are interested in and investigate these in your work. Live Theatre that you see will also be very influential on the ideas and styles that you experiment with in lessons so that you can grow and develop as a drama practitioner. A GCSE after school club will help you to receive more support and guidance on your work.

What will I study?

Unit 1 (40%)

As a theatre company you will devise your own piece of theatre and perform it in a particular style or using the techniques of a theatre practitioner.

Unit 2 (20%)

You will work as an actor in a pair or group to perform an extract from a play which will be assessed by an external examiner.

Unit 3 (40%)

You will work as a director to explore a complete play. You will be assessed on your ability to analyse **one** set text.

How will I be assessed?

Unit 1 – performance and written report (controlled assessment, marked by teacher and moderated by the exam board)

Unit 2 – 20% performance exam

Unit 3 – 40% written exam

How can I progress?

Work hard and be willing to take risks and experiment with ideas. Show dedication to and a passion in the subject outside of lessons by attending the theatre and committing to your own rehearsals. After successfully completing GCSE you can progress at Barrow Hall College.



Sankey Extra

Throughout the duration of the course you will be given the opportunity to work with a professional theatre practitioner in school who will extend your performance skills and develop your ability to critique live theatre. Trips will also take place to allow you to experience live theatre of different styles and genres.



Why choose this course?

Electronics is a fast moving exciting industry that never stands still. It touches all our lives every day and virtually all industries from robotics and driverless vehicles to medical technologies and spacecraft. If you're looking for a challenge and like solving problems, then electronics is an area that you should consider.

Will I enjoy it?

Do you ever wonder how things work? Do you like solving problems? If you are interested in technology, computing, science, or technical things in general, then electronics is for you.

What will I study?

You will learn about the basics of electronics from resistors and LED's to digital electronics and microcontrollers and microprocessors. In all these areas, theory is learned first followed up with practical experience such as simulation software and prototype boards.

In year 10 and 11 you will firstly learn the foundations of electronics for the course, and year 11 will end with completing your practical assignment.

How will I be assessed?

Assessment is in three parts; Component 1 exam (40%), Component 2 exam (40%) and Component 3 – system design and realisation practical task (20%)

How can I progress?

If you want to progress further, Electronics can be studied at A level, is very useful for Engineering BTEC Level 3 and is a popular degree course throughout the country with many specialisations such as robotics, the space industry, medical electronics, systems and communications to name but a few.

Sankey Extra

There are STEM activities and competitions after school such as the FLL (First LEGO League) and VEX Robotics Challenge for interested students.

Food Preparation and Nutrition

GCSE



Why choose this course?

GCSE Food Preparation and Nutrition is a new, exciting and creative course which focuses on practical cooking skills to ensure you develop a thorough understanding of nutrition, food provenance and the working characteristics of food materials. At its heart, this qualification focuses on nurturing your practical cookery skills to give you a strong understanding of nutrition.

Will I enjoy it?

You will enjoy it as the lessons will be very varied. You will cook a wide range of different dishes and learn lots of skills. Example practicals are Toffee Profiteroles, portioning a chicken, making fresh Tortellini, Chocolate Orange Cake and Banana and Cinnamon Swirls. We will also do practical demonstrations, food experiments and blind challenges. The written work will cover lots of different aspects so will be interesting.

What will I study?

1. Food, nutrition and health – macronutrients, micronutrients, nutritional needs and health.
2. Food science – Cooking of food, as well as the functional and chemical properties of food.
3. Food safety – Food spoilage, contamination and the principles of food safety.
4. Food choice – Factors affecting food choice, British and international cuisines, sensory evaluation, food labelling and marketing.
5. Food provenance – Environmental impact and sustainability of food, food processing and production.

How will I be assessed?

The assessment consists of a theory exam paper at the end of the course worth 50%. There will also be two non-exam assessments to be done in school, providing the other 50%. One is a Food Investigation worth 15% of your final GCSE grade and the other assesses your ability to plan, prepare and present 3 dishes to showcase your skill set. This makes up the final 35% of your mark.

How can I progress?

Studying Food Preparation and Nutrition can lead to exciting and well paid career options. This course could lead you into roles such as a Chef, Food Product Developer, Buyer, Food Safety Inspectors, Nutritionists, Dietician, Quality Managers, Teacher, Food Scientist, Food Technologist, Food Photographer, Food Technician, Food Stylist, Home Economist, Food Critic, working in food magazines, radio and television - for more information on food careers please visit <http://tastycareers.org.uk/> Don't forget it's an amazing life skill too!



Sankey Extra

The number of places are limited so that you have easy access to equipment and are well looked after. This will help to boost your skill level.



Why choose this course?

We have proven excellent exam results at GCSE with over 70% achieving a level 4 or higher. At least 30% of the cohort achieved level 7+. Do you take an Interest in the world around you?

Geography tackles the big issues: Environmental responsibility, Our global interdependence, Cultural understanding, Tolerance, Commerce, Trade and Industry. There are 6 Geography teachers all with a passion for the subject.

Will I enjoy it?

There will be opportunities to complete two pieces of fieldwork based on two separate field trip days – human and physical. There is a balance between human and physical topics. The course will help you to understand what is happening in the world from the Refugee Crisis to the recent floods in the UK. If you enjoy Geography now – you will love GCSE Geography.

What will I study?

Paper 1 – Living with the Physical Environment:

Section A: The challenge of natural hazards – volcanoes, earthquakes, tropical storms, extreme weather in the UK and climate change.

Section B: The living world –Hot Deserts and Tropical rainforests.

Section C: Physical landscapes of the UK – Rivers and Coasts.

Paper 2 – Challenges in the Human Environment:

Section A: Urban issues and challenges –Comparing housing, transport and living conditions with case studies in Brazil, UK and Nigeria.

Section B: Economic Geography in the UK/NEE – Focusing on development indicators with a focus on Nigeria and the UK.

Section C: Global resources – A focus on food, water and energy – Specific case studies on Water Aid and Water Transfer.

Paper 3: Geographical applications -You will develop your enquiry and fieldwork skills to look at local, national or global issues. This section includes a DME booklet and fieldwork.

How will I be assessed?

Paper 1 – Living with the physical environment - 35% (1 hour and 30 minute exam).

Paper 2 – Challenges in the human environment – 35% (1 hour and 30 minute exam).

Paper 3 – Geographical applications – 30% (1 hour and 15 minute exam) – A Decision making pre-release paper that you will receive 12 weeks before the exam and study with your teacher prior to the exam. A fieldwork section to discuss your two days of fieldwork.

How can I progress?

Students will have access to Kerboodle, a range of revision material for each exam and offered weekly intervention sessions. You will be taught Geographical skills and Fieldwork skills. You will be able to progress to the A level Geography course.

Sankey Extra

The Geography Department organizes overseas trips to Iceland and Italy.

The Geography Department results are above the national average for similar schools.



Why choose this course?

Graphic design and the creative industries are one of the fastest growing industries in the UK. In an ever visual and digital world this course prepares students in all aspects of this industry from basic typography to digital graphic design, from design history to the industrial processes behind mass production of packaging. It compliments digital, computing and creative art & design based subjects.

Will I enjoy it?

50% of the course takes the form of coursework and making. It's a creative subject and will explore techniques on and off the computers. The design and industrial theory will be taught where possible through making and practical experience. In year 11 you will get to design your own extended project which you can link to a hobby, interest or career of your choosing.

What will I study?

In year 10 you will complete bite size projects to develop your skills, as part of this you will produce a small portfolio to demonstrate them. Knowledge and design theory will be embedded within these projects and reinforced practically where possible. Towards the end term of year 10 you will use the skills learnt in your first unit to produce an extended project. Your practical skills, design history, technical drawing skills, printing and CAD experience, and practical applications of design in business and industry will be brought together in making a campaign, whether its bags for a shop and advertisements or business cards and packaging for a hair care brand.

How will I be assessed?

The NCEF Course consists of 50% internally assessed portfolio demonstrating skills, 50% Externally assessed making project in which you also have to demonstrate your knowledge of the subject. You will collect evidence of skills and knowledge over the two years and submit the evidence as well as your portfolio and project.

How can I progress?

Graphic design is a fast growing sector, be part of it. You can continue onto A Level Art & Design (Graphic Communication) in Barrow Hall College, which counts as an Art subject for Architecture, gaming or web design or Art Foundation at university. Or you could continue with a design apprenticeship before or after a-level.

Sankey Extra

T6 has industry standard graphic software and A1 professional grade printer.

Why choose this course?

The main reason for choosing History is that you love the subject, and that you want to study over 1000 years of history. History is considered an academic subject and a GCSE in the subject is held highly by universities and employers. History will teach you skills that you will find invaluable in Higher Education and the work place - analysis, evaluation, decision making, team work, problem solving and written and communication.

Will I enjoy it?

Absolutely, GCSE History encourages you to be argumentative and to have an opinion of your own. It is important to be able to debate and articulate your own ideas. Our lessons are designed to allow you to take part in group work, debates, independent work, presentations and discussions. A lot of students continue to study History at A level as a result of their enjoyment of History at GCSE. We want you to enjoy History and be confident in expressing your own opinion.

What will I study?

PAPER 1: UNDERSTANDING THE MODERN WORLD

Section A: **America, 1920–1973: Opportunity and inequality**

The study of major events in American history such as the Roaring 20s, organised crime, the Great Depression, America's role in WWII and the Civil Rights Movement chart America's rise to being a superpower.

Section B: **Conflict and tension, 1918-1939**

You will look at how Britain, France and the USA tried to punish Germany at the end of WWI, but also how they tried to make sure that another World War did not break out. Hitler broke the promise Germany made in the Treaty of Versailles, increased German strength and set Europe on the road to war.

PAPER 2: SHAPING THE BRITISH NATION

Section A: **British thematic study from c790 to the present day**

This is an exciting new unit which will allow us to study approximately 1000 years of British history through themes such as power of the people and the growth and decline of the British Empire.

Section B: **British depth study including historic environment.**

For the new GCSE course, you will complete a depth study of Edward I, a monarch who united and reformed England after the reign of his father. Edward has been described as a murderer, pagan, ambitious and self-serving. The study of his reign will allow to reach your own conclusions on Edward Longshanks.

How will I be assessed?

Paper 1 – 2 hour exam worth 50% (taken at end of Y11)

Paper 2 – 2 hour exam worth 50% (taken at end of Y11)

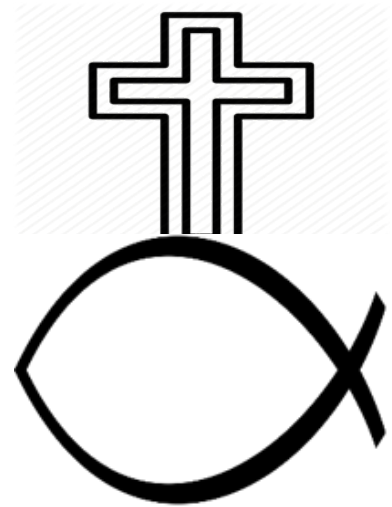
How can I progress?

Throughout the course you will be given GCSE exam style questions to answer in class, at home and in end of unit assessment so that you are fully prepared. From the start of the course we will teach you all of the skills needed to be a successful historian. We will encourage a lifelong passion for history that will stay with you long past your exams at the end of year 11. After successfully completing GCSE you can progress onto A Level at Barrow Hall College.



Sankey Extra

As a GCSE student at Great Sankey you will be given extra support in terms of revision sessions, revision guides created in house that are bespoke to our students. The History department at Great Sankey works together to ensure each student has the best possible chance of exceeding their potential.



Why choose this course?

This course is designed to equip pupils with the practical health and social care skills they need to progress to further general or vocational study. They'll develop a broad understanding of health and social care, so they can make informed decisions about their career opportunities.

Will I enjoy it?

Within Health and Social Care, we employ a variety of different activities, teaching styles and resources that cater for all of our pupils. We deliver a mixture of topic areas that pupils can relate to and are interested in, and we guide them into developing and expanding their own thoughts and ideas.

What will I study?

Unit 1: - Human lifespan development

The study of how people grow and develop over the course of their life & how they deal with life events.

Unit 2: - Health & social care services

The study & practical exploration of health & social care services & how they meet the needs of real service users.

Pupils also have to be able to demonstrate the key care values in a health & social care context.

Unit 3: - Health & Well-being

The study of factors that affect health & the interpretation of health indicators. Pupils also have to design a health & well-being plan & show how to overcome obstacles.

How will I be assessed?

Overall 60 % internally assessed 40 % externally assessed. Unit 1 and Unit 2 have a weighting of 30 % each. Unit 3 has a weighting of 40 %.

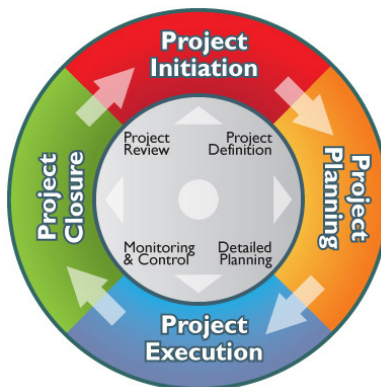
How can I progress?

This course leads perfectly onto our Level 3 BTEC in Health and Social care that is offered at Barrow Hall College.

Our pupils who do the Level 3 course can then either go onto a relevant degree course or go into an apprenticeship.

Sankey extra

Students can supplement their skills by attending the weekly Drop-In Support Sessions on Wednesdays in the college building.



Why choose this course?

Have you considered a career in IT? Would you like to learn the skills which could be vital if you ever decide to work in IT? If so, then the Cambridge National in Information Technologies is for you.

Will I enjoy it?

This Cambridge National course has a practical and theoretical element to it. It allows you to apply your IT skills and knowledge to real-world, work-related contexts in both the project and the exam.

What will I study?

This qualification will teach the learner what different technologies could be used, why they should use them and how to make best use of them. They will also learn about how to gather, store, manipulate and present data; this is known as data management.

They will learn about tools and techniques for use in different digital hardware and software technologies, and how these can be integrated to create digital solutions to manage and communicate data and information. They will also be taught what data and information are and the legal, ethical and moral considerations when using technology to gather, store and present data and information, and how to mitigate the risks of cyber-attacks.

How will I be assessed?

Assessment Unit R012 - Understanding tools, techniques, methods and processes for technological solutions
Learners will sit an exam to assess their knowledge and understanding of different technologies (hardware and software applications), and tools and techniques used to select, store, manipulate and present data and information. (50% of grade).

Assessment Unit R013 – Developing technological solutions

This assessment focuses on how effectively learners use their skills when developing a technological solution. They will be given a project to develop a technological solution that processes data and communicates information (50% of grade).

How can I progress?

The course naturally leads onto Level 3 IT courses offered at Barrow Hall College. Due to its nature, it will also provide you with skills and knowledge for many IT apprenticeships that might be available to you in the local area.

Sankey Extra

Project management is also a skill set that this course will train you up in!



Why choose this course?

Music is a fun, enjoyable and practical subject with only one written exam! If you are a keen musician and are interested in performing, composing and listening to different styles of Music, then this is definitely the course for you.

Will I enjoy it?

Yes! If you are creative and hardworking, you will love these lessons. Small classes mean you get consistent one to one tuition from enthusiastic musicians. Small class sizes also mean strong relationships are formed (family ethos) and end results are consistently above original target.. In 2018, 75% of the entire cohort achieved a Grade 7, 8 or 9 which is largely due to the fact that our students love the lessons and course. We pride ourselves that our dedicated staff go the extra mile.

What will I study?

During the course you will study the following:-

Performance (30%) - Perform one piece of music on your own and one in a group. You **MUST** be having lessons on your instrument/ voice. It is not too late to sign up now- see any music teacher.

Composition (30%) - Write two pieces of music over two years; one 'free' composition and one composition to a set brief.

Listening & Contextual Understanding (40%) – 1hr 30mins written exam taken at the end of Year 11. Listen to excerpts of music from 1650 - present day and answer questions about them.

How will I be assessed?

60% coursework! The performances are recorded in the recording studio (C6) and composition is completed and assessed as coursework, both during Year 10 and Year 11. The listening and analysis is an external written exam taken in the Summer Term of Year 11.

How can I progress?

This course feeds into our A Level Music course, which will develop your skills even further. After the A Level course, some of our students go on to study the subject at university, others take Music as it is their hobby. The course teaches invaluable life skills such as commitment, communication, teamwork, creative thinking, leadership, and independent and collaborative learning. Music GCSE makes our students highly employable.

Sankey Extra

This course goes well with NCFE Music Technology. Hone your musical skills in one and learn to record and produce your own music in the other.

Music Technology

Level 2 Technical Award



Why choose this course?

Choose Music Technology if you are interested in how music is produced, if you have used Pro Tools software before and enjoyed it, or if you like to work in a practical environment. You don't need to be able to play an instrument, but basic keyboard skills will help. Class sizes are small and our results are exceptional, with 94% of students achieving on or above their target grades in 2018 and the majority of the class achieving Grade Distinction*

Will I enjoy it?

Yes. If you are a practical and creative learner, you will be in your element during these lessons!

What will I study?

During the course you will learn:

Sequencing: Using Pro Tools software to program your own music.

Composing: The skills to create your own original piece of music in a style of your choice.

Recording: How to place microphones to capture a live performance professionally.

Mixing: How to balance audio and use effects to improve the sound of your recording.

Audio Editing/Radio Production: How to chop, edit and fade sounds smoothly.

How will I be assessed?

The course breaks down as follows:

50% - Coursework portfolio. Four units of work completed throughout the two years.

35% - Two hour practical exam. You will demonstrate your technical skills by completing practical tasks.

15% - Two hour written exam, based on the content covered throughout the two years.

How can I progress?

This course feeds into our A Level Music Technology course, which will develop your skills even further. After the A-Level course, lots of our students go on to study the subject at university.

Alternatively, the course prepares you for entering directly into the workplace, as Pro Tools is the industry standard music production software.

Sankey Extra

Create professional recordings using our fully equipped recording studio, preparing you for employment in the industry.



Why choose this course?

Psychology is the study of both the mind and behaviour. It will help to improve and develop a range of skills from verbal communication to critical analysis within written work. It will teach you to recognise two sides of an argument, to form a discussion and to think outside of the box.

Will I enjoy it?

Within Psychology, we employ a variety of different activities, teaching styles and resources that cater for all of our students. We deliver a mixture of topic areas that students can relate to and are interested in, and we guide students into developing and expanding their own thoughts and ideas. You will need a good memory as there are a lot of facts to recall. In addition you will need to have good basic maths skills (10% of GCSE exam) and have good English skills to succeed at this subject

What will I study?

The topic areas that you will cover at GCSE level include:

- Topic 1: **Development** – How did you develop?
- Topic 2: **Memory** – How does your memory work?
- Topic 3: **Psychological problems** – How would psychological problems affect you?
- Topic 4: **The brain and neuropsychology** – How does your brain affect you?
- Topic 5: **Social influence** – How do others affect you?
- Topic 6: **Criminal psychology** – Why do people become criminals?
- Topic 7: **Sleep and dreaming** – Why do you need to sleep and dream?
- Topic 8: **Research methods** – How do you carry out psychological research?

How will I be assessed?

The course is **100% exam based** and the students will take 2 exams at the end of Year 11.

- Paper 1 = 1hr 45mins - 58% (of your GCSE result)
- Paper 2 = 1hr 15 mins - 32% (of your GCSE result)

How can I progress?

Many of our GCSE students continue to study Psychology further at A Level and then at Degree Level. Psychology is widely used today and can be found in almost all fields of education and employment.

<http://www.bps.org.uk/careers-portal> (for info on specific Psychology careers).

Sankey Extra

Staff are GCSE examiners and have the understanding of the course to enable you to get top grades

Sport Studies

BTEC Level 1/2



Why choose this course?

This course provides an engaging and relevant introduction to the world of sport. It incorporates important aspects of the industry, such as fitness testing and training for sport and exercise, the psychology of sport, practical sports performance and sports leadership. It enables you to develop and apply your knowledge, while also developing a range of relevant practical, communication and technical skills.

Will I enjoy it?

If you have a genuine interest in sport and want to develop understanding of fitness, practical and leadership skills you will enjoy this course.

What will I study?

Fitness for sport and exercise

In this unit you will learn about the components of fitness and the principles of training. You will explore different fitness training methods and investigate fitness testing to determine fitness levels.

Practical performance in sport

In this unit you will develop an understanding of the rules, regulations and scoring systems for selected sports. You will practically demonstrate skills, techniques and tactics in selected sports, and use different methods to review your performance.

Applying the principles of personal training

In this unit you will design and implement a personal fitness training programme, understanding the effects on the body during fitness training.

Leading sports activities

In this unit you will know the attributes associated with successful sports leadership. You will plan and lead sports activities, reviewing your success.

How will I be assessed?

25% Fitness for sport and exercise- Online exam.

25 % Practical performance in sport- Internally assessed, moderated by Pearson.

25 % Applying the principles of personal training- Internally assessed, moderated by Pearson. 25 % Leading sports activities- Internally assessed, moderated by Pearson.

The online exam can be re-sat if necessary.

Written assignments are marked internally and students are given feedback on their first draft allowing them to improve their final submission.

How can I progress?

These course is a perfect platform to students wishing to continue their studies at level 3 at Barrow Hall College.



Sankey Extra

Students will have access to the fantastic sports facilities within the school and at the Great Sankey neighbourhood hub to help develop their skills and complete their exercise programmes.



Why choose this course?

Statistics is about making decisions when there is uncertainty. Perhaps one of the most versatile areas of mathematics, it gives students the skills to collect, analyse, interpret and present data. It complements subjects such as GCSE Biology, Psychology, Geography and Business, and opens the door to a variety of careers – from weather forecasting to the biological sciences.

Will I enjoy it?

It sounds obvious, but you will enjoy it if you have an interest in mathematics. If you enjoy problem-solving and decision making you will enjoy taking GCSE Statistics because you will be collecting data and having to make logical decisions in a short space of time based upon the data you have analysed. It is also a fantastic opportunity to study new areas of mathematics such as linear regression, the binomial distribution, Spearman's Rank Correlation Coefficient and standard deviation to name but a few. These are incredible areas that allow you to extend your knowledge and enhance your work and understanding in the statistical components of other subjects.

What will I study?

You will look at five key areas in statistics that go alongside the Statistical Enquiry Cycle: the planning of statistical investigations, the methods used in data collection, the generating and analysis of statistical diagrams, the calculation of statistical measures to compare data and the interpretation of results and relating them back to a hypothesis or questions that have been posed.

How will I be assessed?

The GCSE Assessments in Statistics can be sat at Higher or Foundation Tiers depending on progress. The final examinations at each tier will consist of two Written Papers lasting 1 hour 45 minutes and each paper will be marked out of 80. Calculators are allowed to be used for each paper.

How can I progress?

From the start of the course, completing the work thoroughly and always relating it back to the hypothesis or objective. It is also imperative that you learn to use your calculator effectively as it will be used in ways you will not have known you are able to!

You can also help to accelerate your progress in GCSE Mathematics as you will be reviewing some topics that are interlinked with your GCSE Statistics such as Cumulative Frequency, Box Plots, Histograms, Tree Diagrams and Venn Diagrams. In addition, linking the concepts that you are being introduced to you to other subjects that you are taking will enhance your skills across your curriculum.

Sankey Extra

GCSE Statistics can be used to complement your work in GCSE Mathematics and is excellent preparation for courses such as A-Level Mathematics, Level 3 Mathematics Studies (Core Mathematics) and A-Level subjects such as Psychology, Biology, Chemistry, Physics, Business, Economics and Geography.

Textile Design

GCSE



Why choose this course?

GCSE TEXTILE DESIGN is a creative, practical and rewarding subject with opportunities to progress to A level. It will give you the chance to work with new materials and techniques including the sewing machines and fabrics and also to work with the heat press and heat transfer design techniques.

Will I enjoy it?

If you are passionate about all aspects of TEXTILES, fashion and design, work hard and love the subject you will enjoy it as there is more scope to study your own areas of interest and make links to work that you have seen produced by contemporary artists and designers. There are regular after school clubs where you can get more help if needed.

What will I study?

You will research the work of other textile artists and designers and develop your own independent ideas about their work. Your artist research and analysis forms an important part of your progress by providing inspiration from looking at the work of established crafts people and designers. You will keep a sketchbook of all your ideas over the two years and this will show your development of projects from initial ideas and studies through to planning for final pieces of work. The course will include observational drawing techniques and you will then develop your ideas using a range of fabrics, textile techniques and processes to produce a wide range of samples. You will then refine and develop your skills further to produce your final pieces.

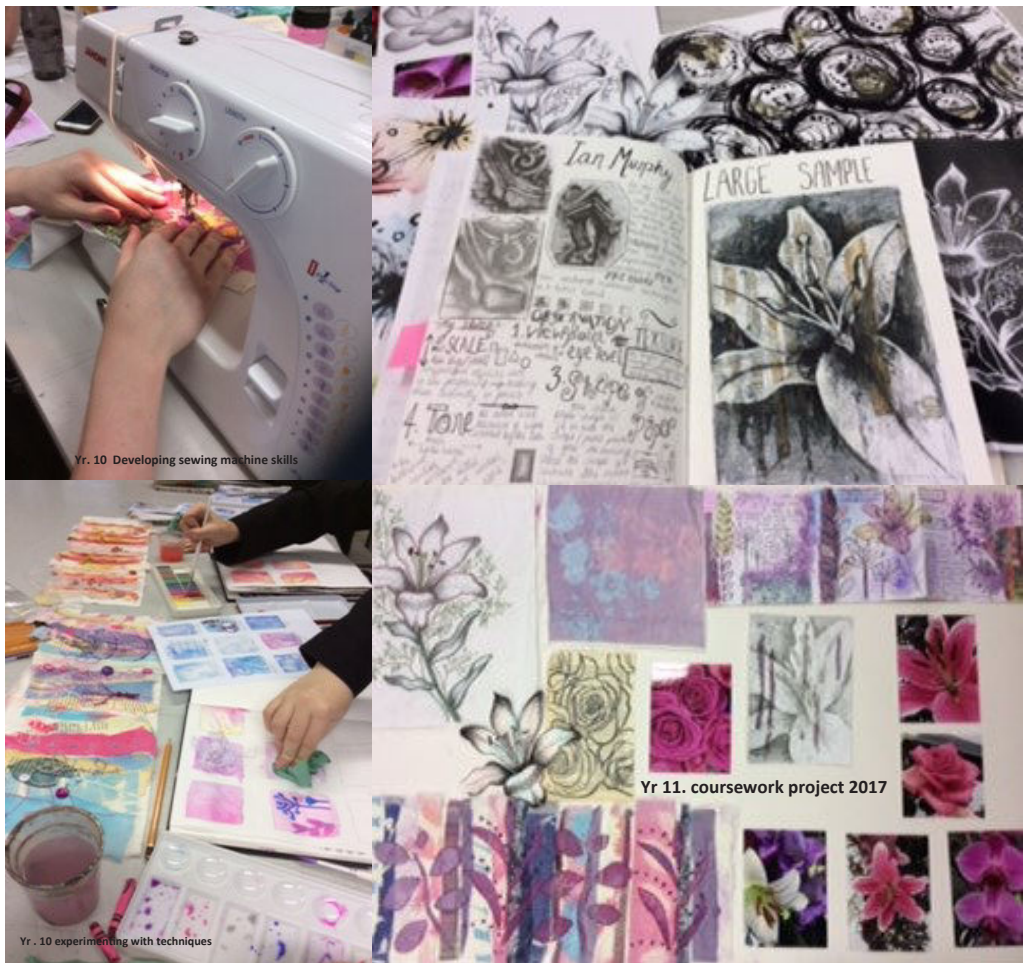
How will I be assessed?

60% of final GCSE grade is based on coursework portfolio produced over the 2 years.

40% of final grade is based on final exam project that begins in January of year 11. Exam papers are issued during the first lesson after 1st January.

How can I progress?

Work hard from the start of September in year 10 – all work can contribute towards your final grade. Be passionate about the subject and show an interest in visiting craft galleries and exhibitions. Come along to after school club. Be willing to try out new materials, techniques and processes. After successfully completing GCSE you can progress onto A Level at Barrow Hall College.



Sankey Extra

You will regularly discuss your work on an individual basis with your teacher and be set individual tracking targets to help you make accelerated progress. If you act on this advice, you will make excellent progress. You can take textile design as well as the art & design option.