



**GREATFIELDS PRIMARY**

Excellence for all

# **Health, Safety and Wellbeing Policy**

Approved: September 2025

Review Date: September 2027

Approved by the Governing Body: 25th September 2025

## Contents

1. Statement of Intent
2. Legislation
3. Responsibilities
4. Site Security
5. Fire
6. COSHH
7. Equipment
8. Lone working
9. Working at height
10. Manual handling
11. Off-site visits
12. Lettings
13. Violence at work
14. Smoking
15. Infection prevention and control
16. New and expectant mothers
17. Occupational stress
18. Accident reporting
19. Catering
20. Training
21. Monitoring
22. Links with other policies

## 1. Statement of Intent

The Governing Body of Greatfields Primary School considers the successful management of health and safety to be a key objective and an integral part of school activities. We are committed to reducing and preventing workplace injuries, ill health and unnecessary losses and liabilities so far as is reasonably practicable.

Greatfields Primary School is committed to:

- Compliance with all applicable legislative and regulatory requirements.
- Providing a robust, systematic and sustainable health and safety management system.
- Ensuring health and safety roles and responsibilities are understood and communicated throughout the school.
- Identifying our health and safety risks and ensuring provision of suitable and sufficient risk control measures.
- Providing appropriate and relevant information, instruction, training and supervision.
- Consulting with staff on health and safety issues.
- Providing a healthy and safe workplace.
- Providing appropriate emergency arrangements, equipment and facilities.
- Continual improvement in all areas of health and safety management.

We expect all employees, contractors and visitors to take reasonable care for their own health and safety and that of others who may be affected by their actions or omissions.

The Schools Governing Body accepts their health and safety responsibilities and are committed to developing a culture that supports the effective management of health and safety at all levels.

The Governing Body will provide the necessary physical and financial resources, provide active leadership and obtain any necessary expert advice in order to demonstrate our commitment to and support for the health and safety policy.

## 2. Legislation

This policy is based on advice from the Department for Education on health and safety in schools and the following legislation:

- The Health and Safety at Work etc. Act 1974, which sets out the general duties employers have towards employees and duties relating to lettings.
- The Management of Health and Safety at Work Regulations 1992, which require employers to make an assessment of the risks to the health and safety of their employees.
- The Management of Health and Safety at Work Regulations 1999, which require employers to carry out risk assessments, make arrangements to implement necessary measures, and arrange for appropriate information and training.
- The Control of Substances Hazardous to Health Regulations 2002, which require employers to control substances that are hazardous to health.
- The Reporting of Injuries, Diseases and Dangerous Occurrences Regulations (RIDDOR) 2013, which state that some accidents must be reported to the Health and Safety Executive and set out the timeframe for this and how long records of such accidents must be kept.
- The Health and Safety (Display Screen Equipment) Regulations 1992, which require employers to carry out digital screen equipment assessments and states users' entitlement to an eyesight test.
- The Gas Safety (Installation and Use) Regulations 1998, which require work on gas fittings to be carried out by someone on the Gas Safe Register.
- The Regulatory Reform (Fire Safety) Order 2005, which requires employers to take general fire precautions to ensure the safety of their staff.
- The Work at Height Regulations 2005, which requires employers to protect their staff from falls from height.
- The school follows national guidance published by UK Health Security Agency (formerly Public Health England) and government guidance on living with COVID-19 when responding to infection control issues.
- Sections of this policy are also based on the statutory framework for the Early Years Foundation Stage.

This policy complies with our funding agreement and articles of association.

### **3. Responsibilities**

Partnership Learning has ultimate responsibility for health and safety matters in the school, but delegates responsibility for the strategic management of such matters to the school's governing board.

The governing board delegates operational matters and day-to-day tasks to the headteacher and staff members.

#### **3.1 *Governing Body***

The Governing Body, as the employer is responsible for Health and Safety and therefore ensuring compliance with relevant legislation. This includes legal duties as controllers of the premises.

Governor's duties include:

- Assess the risks to staff and others affected by school activities in order to identify and introduce the health and safety measures necessary to manage those risks.
- Inform employees about risks and the measures in place to manage them.
- Ensure that adequate health and safety training is provided.

The governor who oversees health and safety is Roger Carver.

#### **3.2 *Executive Headteacher/Head of School***

The Executive Headteacher/Head of School is responsible for health and safety day-to-day. This involves:

- Implementing the health and safety policy.
- Ensuring there is enough staff to safely supervise pupils.
- Ensuring that the school building and premises are safe and regularly inspected.
- Providing adequate training for school staff.
- Reporting to the governing board on health and safety matters.
- Ensuring appropriate evacuation procedures are in place and regular fire drills are held.
- Ensuring that in their absence, health and safety responsibilities are delegated to another member of staff.
- Ensuring all risk assessments are completed and reviewed.

- Monitoring cleaning contracts, and ensuring cleaners are appropriately trained and have access to personal protective equipment, where necessary.

In the headteachers absence, Lynn Nash, SBM assumes the above day-to-day health and safety responsibilities.

### **3.3 Health and Safety Lead**

The nominated health and safety lead is Lynn Nash.

### **3.4 Staff**

All employees are responsible for:

- School staff have a duty to take care of pupils in the same way that a prudent parent would do so.
- Staff will:
  1. Take reasonable care of their own health and safety and that of others who may be affected by what they do at work.
  2. Co-operate with the school on health and safety matters.
  3. Work in accordance with training and instructions.
  4. Inform the appropriate person of any work situation representing a serious and immediate danger so that remedial action can be taken.
  5. Model safe and hygienic practice for pupils.
  6. Understand emergency evacuation procedures and feel confident in implementing them.

And, with respect to Safety Education:

- All employees are responsible for contributing to the safety education of pupils through the formal and informal curriculum.
- All teachers and support staff are responsible for the effective supervision and safety of pupils under their care. This includes ensuring that pupils follow health and safety instructions.

### **3.5 Pupils and Parents**

Pupils and parents are responsible for following the school's health and safety advice, on-site and off-site, and for reporting any health and safety incidents to a member of staff.

### 3.6 *Contractors and Visitors*

Contractors will agree health and safety practices with the Executive Headteacher/Head of School before starting work.

Before work begins, the contractor will provide evidence that they have completed an adequate risk assessment of all their planned work.

## 4. Site Security

Ricky Wootton (Senior Site Manager) is responsible for the security of the school site in and out of school hours. He is responsible for visual inspections of the site, and for the intruder and fire alarm systems.

Ricky Wootton (Senior Site Manager) and Sarah Kinnaird (Executive Headteacher) are key holders and will respond to an emergency.

## 5. Fire

Emergency exits, assembly points and assembly point instructions are clearly identified by safety signs and notices. Fire risk assessment of the premises will be reviewed regularly.

Emergency evacuations are practised at least once a term.

The fire alarm is a loud intermittent bell.

Fire alarm testing will take place once a week.

New staff will be trained in fire safety and all staff and pupils will be made aware of any new fire risks.

In the event of a fire:

- The alarm will be raised immediately by whoever discovers the fire and emergency services contacted. Evacuation procedures will also begin immediately.
- Fire extinguishers may be used by staff only, and only then if staff are trained in how to operate them and are confident they can use them without putting themselves or others at risk.
- Staff and pupils will congregate at the assembly points. This will be in the playground by the fences opposite the school.

- Class teachers will take a register of pupils, which will then be checked against the attendance register of that day.
- The Executive Headteacher / Head of School / SBM will take a register of all staff.
- Staff and pupils will remain outside the building until the emergency services say it is safe to re-enter

The school will have special arrangements in place for the evacuation of people with mobility needs and fire risk assessments will also pay particular attention to those with disabilities.

PEEPs are in place for children that require them. These are assessed by the SENDCO.

## 6. COSHH

Schools are required to control hazardous substances, which can take many forms, including:

- Chemicals.
- Products containing chemicals.
- Fumes.
- Dusts.
- Vapours.
- Mists.
- Gases and asphyxiating gases.
- Germs that cause diseases, such as leptospirosis or legionnaires disease.

Control of substances hazardous to health (COSHH) risk assessments are completed by Ricky Wootton (Senior Site Manager) and Lynn Nash (School Business Manager). These are circulated to all employees who work with hazardous substances. Staff will also be provided with protective equipment, where necessary.

Our staff use and store hazardous products in accordance with instructions on the product label. All hazardous products are kept in their original containers, with clear labelling and product information.

All flammable liquids will be held in a non-flammable COSHH cabinet in the Resource building. All other COSHH liquids that are not flammable will be stored in a separate COSHH cabinet with the exception of the cleaning materials currently in use. These will be held in the cleaning cupboard, at height and the cupboard will be kept locked at all times.

Any hazardous products are disposed of in accordance with specific disposal procedures.

Emergency procedures, including procedures for dealing with spillages, are displayed near where hazardous products are stored and in areas where they are routinely used.

### **6.1 Legionella**

- A water risk assessment has been completed. Ricky Wootton (Senior Site Manager) is responsible for ensuring that the identified operational controls are conducted and recorded in the school's water log book.
- This risk assessment will be reviewed every 3 years and when significant changes have occurred to the water system and / or building footprint.
- The risks from legionella are mitigated by the following:
  - Monthly temperature checks for hot and cold water.
  - Quarterly checks and cleaning of taps with aerosol.

### **6.2 Asbestos**

The school premises does not contain any asbestos.

## **7. Equipment**

All equipment and machinery are maintained in accordance with the manufacturer's instructions. In addition, maintenance schedules outline when extra checks should take place.

When new equipment is purchased, it is checked to ensure it meets appropriate educational standards.

All equipment is stored in the appropriate storage containers and areas. All containers are labelled with the correct hazard sign and contents.

### **7.1 Electrical equipment**

- All staff are responsible for ensuring they use and handle electrical equipment sensibly and safely.
- Any pupil or volunteer who handles electrical appliances does so under the supervision of the member of staff who so directs them.
- Any potential hazards will be reported to Ricky Wootton (Senior Site Manager) immediately.
- Permanently installed electrical equipment is connected through a dedicated isolator switch and adequately earthed.
- Only trained staff members can check plugs.
- Where necessary, a portable appliance test (PAT) will be carried out by a competent person.
- All isolator switches are clearly marked to identify their machine.

- Electrical apparatus and connections will not be touched by wet hands and will only be used in dry conditions.
- Maintenance, repair, installation and disconnection work associated with permanently installed or portable electrical equipment is only carried out by a competent person.

### **7.2 PE equipment**

- Pupils are taught how to carry out and set up PE equipment safely and efficiently. Staff check that equipment is set up safely.
- Any concerns about the condition of the gym floor or other apparatus will be reported to the Site Manager or SBM.

### **7.3 Display screen equipment**

- All staff who use computers daily as a significant part of their normal work have a display screen equipment (DSE) assessment carried out. 'Significant' is taken to be continuous / near continuous spells of an hour or more at a time.
- Staff identified as DSE users are entitled to an eyesight test for DSE use upon request, and at regular intervals thereafter, by a qualified optician (and corrective glasses provided if required specifically for DSE use).

### **7.4 Specialist equipment**

Parents are responsible for the maintenance and safety of their children's wheelchairs. In school, staff promote the responsible use of wheelchairs.

## **8. Lone working**

Lone working may include:

- Late working.
- Home or site visits.
- Weekend working.
- Site Manager duties.
- Site cleaning duties.
- Working in a single occupancy office.
- Remote working, self-isolation and / or remote learning.

Potentially dangerous activities, such as those where there is a risk of falling from height, will not be undertaken when working alone. If there are any doubts about the task to be performed, then the task will be postponed until other staff members are available.

If lone working is to be undertaken, a colleague, friend or family member will be informed about where the member of staff is and when they are likely to return.

The lone worker will ensure they are medically fit to work alone.

## **9. Working at height**

We will ensure that work is properly planned, supervised and carried out by competent people with the skills, knowledge and experience to do the work.

In addition:

- The Site Manager retains ladders for working at height.
- Pupils are prohibited from using ladders.
- Staff will wear appropriate footwear and clothing when using ladders.
- Contractors are expected to provide their own ladders for working at height.
- Before using a ladder, staff are expected to conduct a visual inspection to ensure its safety.
- Access to high levels, such as roofs, is only permitted by trained persons.

## **10. Manual handling**

It is up to individuals to determine whether they are fit to lift or move equipment and furniture. If an individual feel that to lift an item could result in injury or exacerbate an existing condition, they will ask for assistance.

The school will ensure that proper mechanical aids and lifting equipment are available in school, and that staff are trained in how to use them safely.

Staff and pupils are expected to use the following basic manual handling procedure:

- Plan the lift and assess the load. If it is awkward or heavy, use a mechanical aid, such as a trolley, or ask another person to help.
- Take the more direct route that is clear from obstruction and is as flat as possible.
- Ensure the area where you plan to offload the load is clear.
- When lifting, bend your knees and keep your back straight, feet apart and angled out. Ensure the load is held close to the body and firmly. Lift smoothly and slowly and avoid twisting, stretching and reaching where practicable.

## **11. Off-site visits**

When taking pupils off the school premises, we will ensure that:

- Risk assessments will be completed where off-site visits and activities require them.
- All off-site visits are appropriately staffed.

- Staff will take a mobile phone, an appropriate portable first aid kit, information about the specific medical needs of pupils, along with the parents' contact details.
- There will always be at least one first aider on school trips and visits.
- For trips and visits with pupils in the Early Years Foundation Stage, there will always be at least one first aider with a current paediatric first aid certificate.
- For other trips, there will always be at least one first aider on school trips and visits.

## **12. Lettings**

This policy applies to lettings. Those who hire any aspect of the school site or any facilities will be made aware of the content of the school's health and safety policy, and will have responsibility for complying with it.

## **13. Violence at work**

We believe that staff should not be in any danger at work, and will not tolerate violent or threatening behaviour towards our staff.

All staff will report any incidents of aggression or violence (or near misses) directed to themselves to their line manager / headteacher immediately. This applies to violence from pupils, visitors or other staff.

## **14. Smoking**

Smoking or vaping is not permitted anywhere on the school premises.

## **15. Infection prevention and control**

We follow national guidance published by the UK Health Security Agency when responding to infection control issues. We will encourage staff and pupils to follow this good hygiene practice, outlined below, where applicable.

### **15.1 *Handwashing***

- Wash hands with liquid soap and warm water, and dry with paper towels.
- Always wash hands after using the toilet, before eating or handling food, and after handling animals.
- Cover all cuts and abrasions with waterproof dressings.

### **15.2 *Coughing and sneezing***

- Cover mouth and nose with a tissue.
- Wash hands after using or disposing of tissues.

- Spitting is discouraged.

### **15.3 Personal protective equipment**

- Wear disposable non-powdered vinyl or latex-free CE-marked gloves and disposable plastic aprons where there is a risk of splashing or contamination with blood / body fluids (for example, nappy or pad changing).
- Wear goggles if there is a risk of splashing to the face.
- Use the correct personal protective equipment when handling cleaning chemicals.
- Use personal protective equipment (PPE) to control the spread of infectious diseases where required or recommended by government guidance and / or a risk assessment.

### **15.4 Cleaning of the environment**

- Clean the environment frequently and thoroughly.

### **15.5 Cleaning of blood and body fluid spillages**

- Clean up all spillages of blood, faeces, saliva, vomit, nasal and eye discharges immediately and wear personal protective equipment.
- When spillages occur, clean using a product that combines both a detergent and a disinfectant, and use as per manufacturer's instructions. Ensure it is effective against bacteria and viruses, and suitable for use on the affected surface.
- Never use mops for cleaning up blood and body fluid spillages - use disposable paper towels and discard clinical waste as described below.
- Make spillage kits available for blood spills.

### **15.6 Laundry**

- Wash laundry in a separate dedicated facility.
- Wash soiled linen separately and at the hottest wash the fabric will tolerate.
- Wear personal protective clothing when handling soiled linen.
- Bag children's soiled clothing to be sent home, never rinse by hand.

### **15.7 Clinical waste**

- Always segregate domestic and clinical waste, in accordance with local policy.
- Used nappies / pads, gloves, aprons and soiled dressings are stored in correct clinical waste bags in foot-operated bins.
- Remove clinical waste with a registered waste contractor.
- Remove all clinical waste bags when they are two-thirds full and store in a dedicated, secure area while awaiting collection.

## **15.8 Animals**

- Wash hands before and after handling any animals.
- Keep animals' living quarters clean and away from food areas.
- Dispose of animal waste regularly, and keep litter boxes away from pupils.
- Supervise pupils when playing with animals.
- Seek veterinary advice on animal welfare and animal health issues, and the suitability of the animal as a pet.

## **15.9 Infectious disease management**

We will ensure adequate risk reduction measures are in place to manage the spread of acute respiratory diseases, including COVID-19, and carry out appropriate risk assessments, reviewing them regularly and monitoring whether any measures in place are working effectively.

We will follow local and national guidance on the use of control measures including:

### **Following good hygiene practices**

- We will encourage all staff and pupils to regularly wash their hands with soap and water or hand sanitiser, and follow recommended practices for respiratory hygiene. Where required, we will provide appropriate personal protective equipment (PPE).

### **Implementing an appropriate cleaning regime**

- We will regularly clean equipment and rooms, and ensure surfaces that are frequently touched are cleaned.

### **Keeping rooms well ventilated**

- We will use risk assessments to identify rooms or areas with poor ventilation and put measures in place to improve airflow, including opening external windows, opening internal doors and mechanical ventilation.

## **15.10 Pupils vulnerable to infection**

Some medical conditions make pupils vulnerable to infections that would rarely be serious in most children. The school will normally have been made aware of such vulnerable children. These children are particularly vulnerable to chickenpox, measles or slapped cheek disease (parvovirus B19) and, if exposed to any of these, the parent / carer will be informed promptly and further medical advice sought. We will advise these children to have additional immunisations, for example for pneumococcal and influenza.

## **15.11 Exclusion periods for infectious diseases**

The school will follow recommended exclusion periods outlined by the UK Health Security Agency and other government guidance.

In the event of an epidemic / pandemic, we will follow advice from the UK Health Security Agency about the appropriate course of action.

## **16. New and expectant mothers**

Risk assessments will be carried out whenever any employee or pupil notifies the school that they are pregnant.

Appropriate measures will be put in place to control risks identified. Some specific risks are summarised below:

- Chickenpox can affect the pregnancy if a woman has not already had the infection. Expectant mothers should report exposure to an antenatal carer and GP at any stage of exposure. Shingles is caused by the same virus as chickenpox, so anyone who has not had chickenpox is potentially vulnerable to the infection if they have close contact with a case of shingles.
- If a pregnant woman comes into contact with measles or German measles (rubella), she should inform her antenatal carer and GP immediately to ensure investigation.
- Slapped cheek disease (parvovirus B19) can occasionally affect an unborn child. If exposed early in pregnancy (before 20 weeks), the pregnant woman should inform her antenatal care and GP as this must be investigated promptly.
- Some pregnant women will be at greater risk of severe illness from COVID-19.

## **17. Occupational stress**

We are committed to promoting high levels of health and wellbeing, and recognise the importance of identifying and reducing workplace stressors through risk assessment.

Systems are in place within the school for responding to individual concerns and monitoring staff workloads.

### **17.1 *Counselling***

The School pays for, and has registered all employed members of staff, with an employee assistance program which assists school staff with personal problems and/or work-related problems that may impact their job performance, health, mental and emotional well-being.

Education Support: Telephone 0800 562 561

### **17.2 *Wellbeing***

The School undertake occupational stress risk assessments through use of the guidance and forms available on the Occupational Stress pages of the Schools Infolink. (Health and Safety Area.)

The School pays for, and has registered all employed members of staff, with an employee assistance program which assists school staff with personal problems and/or work-related problems that may impact their job performance, health, mental and emotional well-being.

The School has a trained mental health and well-being lead.

## **18. Accident reporting**

### **18.1 *Accident record book***

- An accident form will be completed as soon as possible after the accident occurs by the member of staff or first aider who deals with it. An accident form template can be found in appendix (2).
- As much detail as possible will be supplied when reporting an accident.
- Information about injuries will also be kept in the pupil's educational record.
- Records held in the first aid and accident book will be retained by the school for a minimum of 3 years, in accordance with regulation 25 of the Social Security (Claims and Payments) Regulations 1979, and then securely disposed of.

### **18.2 *Reporting to the Health and Safety Executive***

The SBM will keep a record of any accident that results in a reportable injury, disease, or dangerous occurrence as defined in the RIDDOR 2013 legislation (regulations 4, 5, 6 and 7).

The SBM will report these to the Health and Safety Executive as soon as is reasonably practicable and in any event within 10 days of the incident.

Reportable injuries, diseases or dangerous occurrences include:

- Death
- Specified injuries. These are:
  - Fractures, other than to fingers, thumbs and toes.
  - Amputations.
  - Any injury likely to lead to permanent loss of sight or reduction in sight.
  - Any crush injury to the head or torso causing damage to the brain or internal organs.
  - Serious burns (including scalding).
  - Any scalping requiring hospital treatment.
  - Any loss of consciousness caused by head injury or asphyxia.

- Any other injury arising from working in an enclosed space, which leads to hypothermia or heat-induced illness, or requires resuscitation or admittance to hospital for more than 24 hours.
- Injuries where an employee is away from work or unable to perform their normal work duties for more than 7 consecutive days.
- Where an accident leads to someone being taken to hospital.
- Where something happens that does not result in an injury, but could have done.
- Near-miss events that do not result in an injury, but could have done. Examples of near-miss events relevant to schools include, but are not limited to:
  - The collapse or failure of load-bearing parts of lifts and lifting equipment.
  - The accidental release of a biological agent likely to cause severe human illness.
  - The accidental release or escape of any substance that may cause a serious injury or damage to health.
  - An electrical short circuit or overload causing a fire or explosion.

Information on how to make a RIDDOR report is available here:

How to make a RIDDOR report - <http://www.hse.gov.uk/riddor/report.htm>

Schools with Early Years Foundation Stage provision add sections 18.3 and 18.4 below:

### **18.3 Notifying parents**

The Teacher will inform parents of any accident or injury sustained by a pupil in the Early Years Foundation Stage, and any first aid treatment given, on the same day, or as soon as reasonably practicable.

### **18.4 Reporting to child protection agencies**

The Headteacher / Deputy Headteacher will notify Essex County Council of any serious accident or injury to, or the death of, a pupil in the Early Years Foundation Stage while in the school's care.

### **18.5 Reporting to Ofsted**

The Headteacher will notify Ofsted of any serious accident, illness or injury to, or death of, a pupil in the Early Years Foundation Stage while in the school's care. This will happen as soon as is reasonably practicable, and no later than 14 days after the incident.

## **19. Catering**

The School's catering service has been outsourced to Aspens a catering company that specialises in schools and therefore has access to competent food safety advice.

Aspens Meals Support Service: 01905 759613

## **20. Training**

Our staff are provided with health and safety training as part of their induction process.

Staff who work in high risk environments, such as in science labs or with woodwork equipment, or work with pupils with special educational needs (SEN), are given additional health and safety training.

## **21. Monitoring**

This policy will be reviewed by the SBM every year.

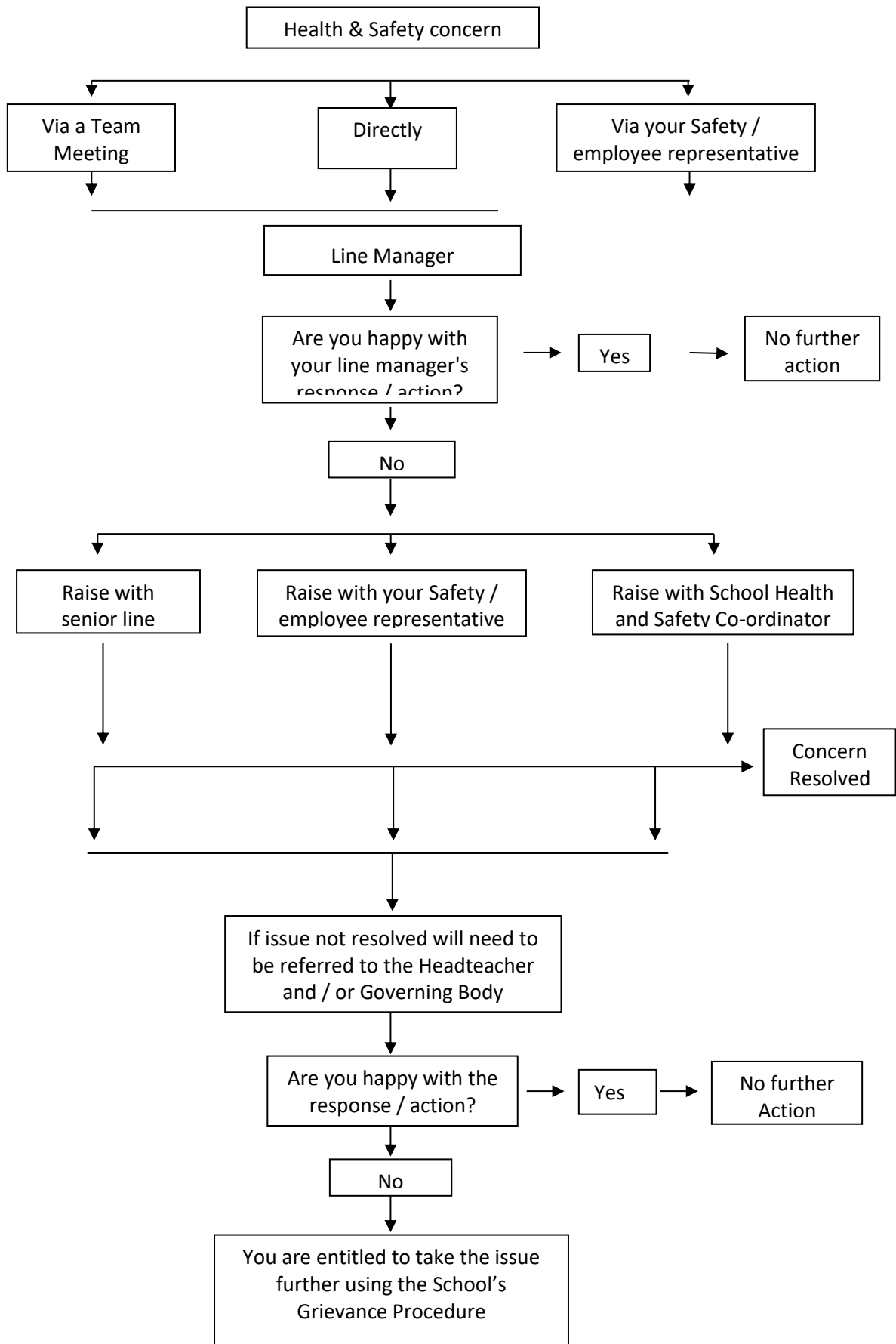
At every review, the Executive Headteacher/Head of School and full governing board will approve the policy.

## **22. Links with other policies**




This health and safety policy links to the following policies:

- First aid.
- Risk assessment.
- Supporting pupils with medical conditions.
- Accessibility plan.
- Emergency or critical incident plan.

## Appendix 1: How to Raise a Health & Safety Concern



## Appendix 2: Accident form

 <p><b>PARTNERSHIP LEARNING</b> <b>GREATFIELDS PRIMARY</b> Excellence for all</p>			
<p>Executive Headteacher: Sarah Kinnaird   Address: Greatfields Primary School, St. Marks, Barking, IG11 7BL   Web: <a href="http://greatfieldsprimary.com/">http://greatfieldsprimary.com/</a> Email: <a href="mailto:office@greatfieldsprimary.com">office@greatfieldsprimary.com</a>   Telephone: 0203 909 2345</p>			
<b>Minor Accident Report</b>			
<b>Child's Name:</b>		<b>Date:</b>	
<b>What happened:</b>			
Location of injury to front: (indicate on girl pic)			Location of injury to back: (indicate on boy pic)
Cut	Cleaned	Location of accident	
Graze	Plaster	Time of accident	
Bump	Rub	Time returned to class	
Ache	Cold pack applied		
Toilet accident	Change of clothes (please return when washed)		
Entered into the Accident book:		Signed:	
Teacher / TA / Key Worker – please hand this to the parent / carer of the child.			

## Appendix 3: Partnership Learning major accident/incident form and child restraint incident log



### ACCIDENT/INCIDENT REPORT FORM

The purpose of this form is to record all Adverse events. The term **accident** is used where injury or ill health occurs. The term **incident** includes **near misses** and **undesired circumstances**, where there is potential for injury. When completed your manager should email this form to [HRpayroll@partnershiplearning.com](mailto:HRpayroll@partnershiplearning.com), as soon as possible (ideally within 24 hours). Any **serious accident/incident must be reported immediately** to your manager and Partnership Learning [hrpayroll@partnershiplearning.com](mailto:hrpayroll@partnershiplearning.com).

#### PART A – ABOUT THE PERSON WHO HAD THE ACCIDENT/INCIDENT

Full Name:		Pay no:	
Job Title:		Other (pupil, member of the public):	
Home Address:			
Post code:			
Tel No:		DOB:	
		Sex	<input type="checkbox"/> Male <input type="checkbox"/> Female

#### PART B – ABOUT THE ACCIDENT/INCIDENT

Date of Accident/Incident		Time (use 24hr format)	
School Name:			
Where did accident/incident occur? Please state room or place			
Address where accident happened or location including post code and phone number	Telephone number:		
If accident happened to pupil which school do they attend			
How did the accident/incident happen, give cause if you can.			
<p>If the person suffered any injury say what the injury was, i.e. cut, graze, strain and what part(s) of the body were injured?</p>			
<p>Did the person attend hospital immediately either via na ambulance or taken there by another person eg partner, parent, carer etc?</p>			
<input type="checkbox"/> YES <input type="checkbox"/> NO			

Was the person absent from work/school?

YES  NO

If Yes please state dates:

What was the accident/incident? (Please tick only one)

A fatality	<input type="checkbox"/>
A major injury or condition i.e fracture or loss of consciousness	<input type="checkbox"/>
An injury to a pupil or member of the public where they had to be taken from the scene of the accident to hospital for treatment	<input type="checkbox"/>
A minor injury or condition	<input type="checkbox"/>
A Violent incident ( <i>physical assault, verbal abuse, threatening behaviour</i> )	<input type="checkbox"/>
A near miss	<input type="checkbox"/>

### PART C – ACTIONS TO PREVENT A RECURRENCE

Risk assessment completed or reviewed?	<input type="checkbox"/> YES	<input type="checkbox"/> NO
Please state action taken to prevent recurrence.		

### PART D – ABOUT YOU, THE PERSON COMPLETING THE FORM

NAME (print):	
Address:	
	Post code
Designation:	

Signature:	Date:
Manager/Headteacher Signature:	Date:

Please return completed form to: [HRPayroll@partnershiplearning.com](mailto:HRPayroll@partnershiplearning.com)

### FOR OFFICE USE ONLY

Date Received (stamp)	Data entry date	Data entry by (initial)	RIDDOR Reportable?	<input type="checkbox"/> YES <input type="checkbox"/> NO
			RIDDOR Reference	

## Child Restraint Incident Log

### 1. Incident Overview

Date of Incident:

Time of Incident:

Duration of Incident:

Location:

Weather/Environmental Conditions (if relevant)

### 2. Child Information

Full Name:

Date of Birth:

Gender:

Class/Year Group:

Key Worker/Teacher:

SEN / Disability Status – If yes, give details:

### 3. Staff Involved

Full Name:

Role:

Intervention Used:

### 4. What happened before the incident?

Describe the events, triggers, or context leading up to the behaviour.

### 5. What was the child's response during restraint?

Include verbal communication during restraint (from staff and child).

### 6. What was the date/time Parent/Guardian was notified?

### 7. Provide a summary below of the discussion and include who you spoke to.

Incident Overview	Yes	No	N/A	Detailed description
Is CCTV of the incident available?				

Type of Behaviour	Yes	No	N/A	Description
Physical Aggression				
Verbal Aggression				
Self-Harm				
Property Damage				
Absconding				

<b>De-escalation Strategies Attempted</b>	<b>Yes</b>	<b>No</b>	<b>N/A</b>	<b>Describe Effectiveness of Strategies</b>
Distraction/redirection				
Offering Choices				
Time-out offered				
Sensory tools				
Calm space				
Other				

<b>Description of Restraint</b>	<b>Yes</b>	<b>No</b>	<b>N/A</b>	<b>Description (include duration of restraint)</b>
Standing hold				
Seated hold				
Escort hold				
Ground hold				
Other				
Is member of staff trained in physical intervention?				

<b>Reason for Restraint</b>	<b>Yes</b>	<b>No</b>	<b>N/A</b>	<b>Description</b>
Immediate risk to self				
Immediate risk to others				
Serious property damage				
Other				

<b>Post-Incident Actions</b>	<b>Yes</b>	<b>No</b>	<b>N/A</b>	<b>Description</b>
Child sustained injuries				
Staff sustained injuries				
First Aid administered				<i>Include name of First Aider</i>
Debrief with Child conducted				<i>Include date, time and summary of child's comments.</i>
Debrief with Staff conducted				<i>Include date, time and summary of staff member comments.</i>
EHCP/Behaviour Support Plan Reviewed/Updated				
Safeguarding Lead Informed				
External Agencies Informed				

<b>Parent/Guardian Notification</b>	<b>Yes</b>	<b>No</b>	<b>N/A</b>	<b>Description</b>
Phone				
Email				
In-person				
Letter				

### **Signatures**

Reported Completed By:

Name:

Signature:

Date:

Manager/Safeguarding Lead Review:

Name:

Signature:

Date:

Parent/Guardian Acknowledgment (if applicable)

Name:

Signature:

Date