

Greenbank Primary Knowledge Organiser



EYFS - Spring 1 - Can anyone be a superhero? Text:

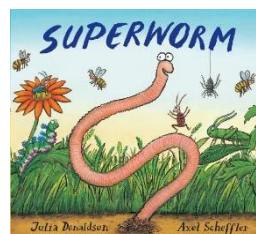
Key Vocabulary

Seasons 	A season is a part of the year.
Winter 	The season between autumn and spring
Leaves 	Leaves are the green part of the plant
Branch 	A part of the tree which grows out from the trunk
Bark 	The protective outer covering of the trunk, branches, and roots of trees and other woody plants
Berries 	Berries are small round fruit that grow on a bush or a tree
Poisonous 	If eaten, can cause sickness or death.
Beech Trees	
Oak Trees	
Ash Trees	
Willow Trees	
Silver Birch Tree	

Key Facts:

Woods and their trees provide shelter, food and safe places for animals and insects to hide.

Tandle Hill is Oldham's oldest country park. It has 48 hectares of parkland with mature beech, mixed woodland and grassland.



Superworm is a hero with a difference. Super-long and super-strong, he's always on hand to help out all the other animals and insects - whether he's saving baby toad from an accident,

rescuing beetle from falling down a well, or even good-naturedly offering himself up as a skipping rope for some bored bees.



Tandle Hills Country Park is in Royton.

Questions

What can you see, hear, smell or taste?

How does it feel?

What do you notice?



Who are the characters?



Where do the characters live?



What happens in the beginning, middle and end of the story?