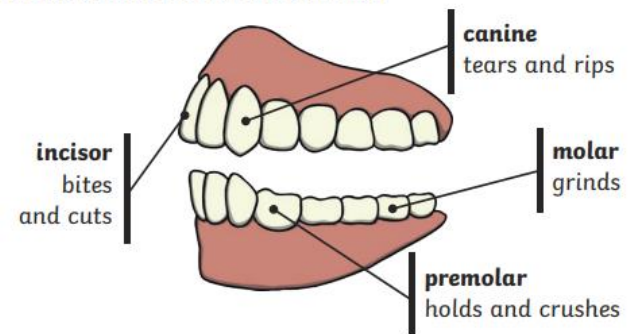


**Key Vocabulary**

Digestion	Small intestine	Canines - ripping, tearing
Mouth	Vitamins	Molars - chewing, grinding
Tongue	Large intestine	Producers
Saliva	Colon	Predators
Oesophagus	Incisors - cutting, slicing	Prey
Transports		
Stomach		
Acid		

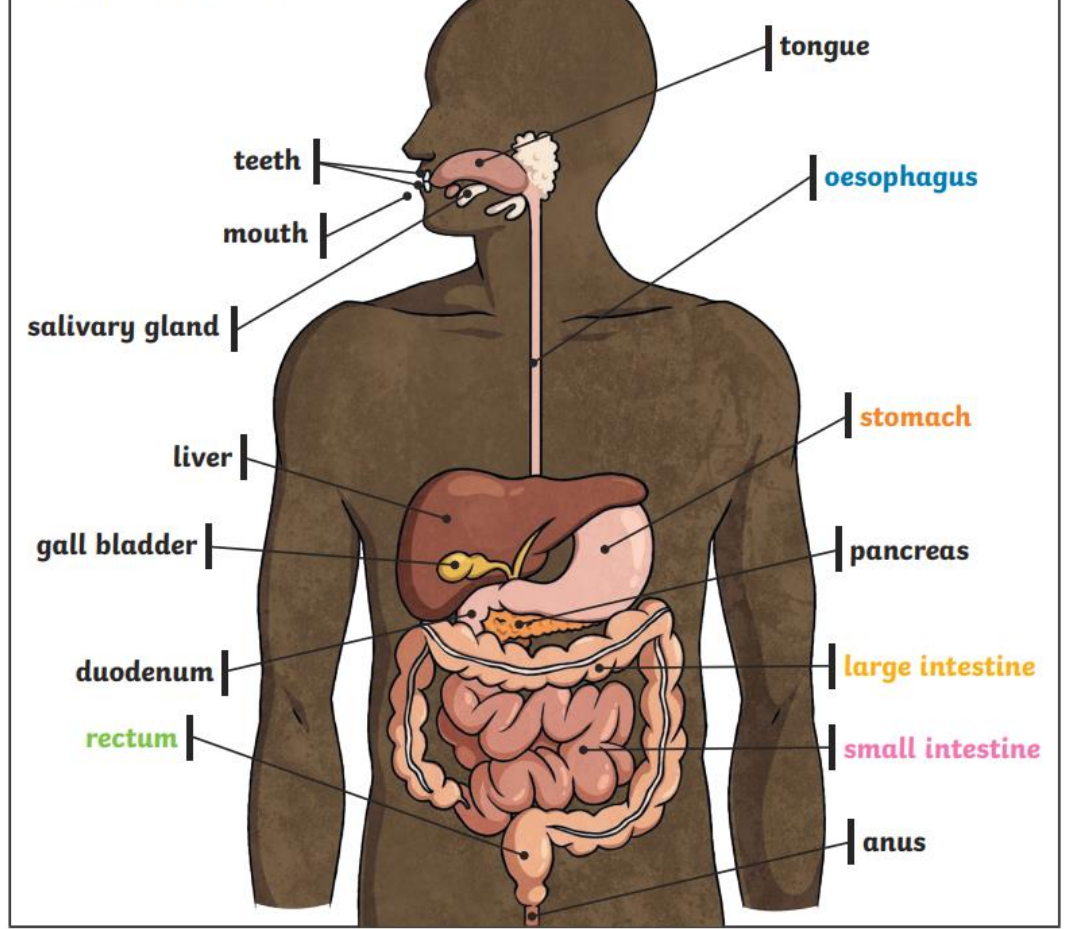
**Human Teeth and Their Functions**



Some people have wisdom teeth but they have no function now.

**Key Knowledge**

**The Digestive System**



To look at all the planning resources linked to the Animals Including Humans unit click [here](#).

What is the purpose of our molars?

What does the arrow represent in a food chain?

Can you tell me how food travels from our mouth to our intestines?

What problems would a horse encounter if it had a lion's teeth?

What is a herbivore and what are their teeth like?

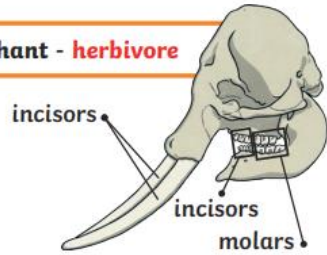
What is the function of a canine?

What would happen to our digestive system if we had no pancreas?

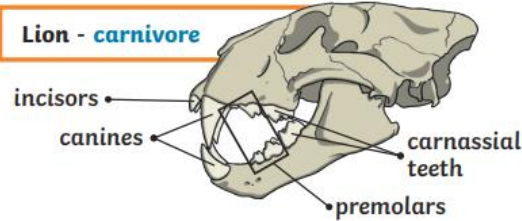
### Key Knowledge

The teeth of an animal are designed to eat different foods depending on the diet of the animal. Examples of a **herbivore**, a **carnivore** and an **omnivore** skull:

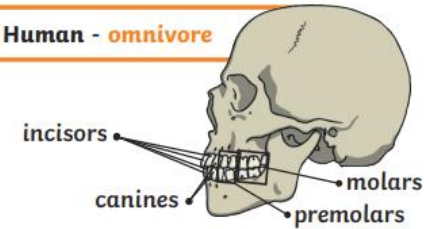
**Elephant - herbivore**



**Lion - carnivore**

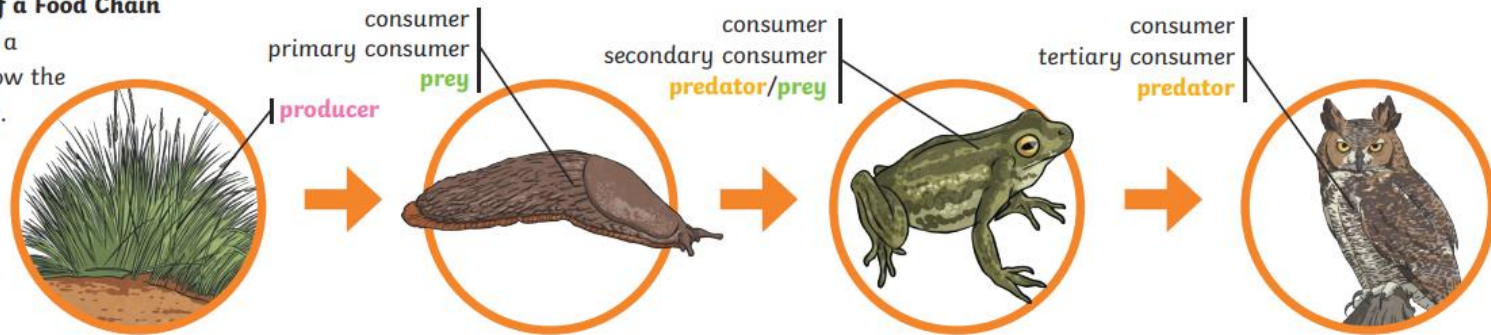


**Human - omnivore**



### An Example of a Food Chain

The arrows in a food chain show the flow of energy.



### Key Vocabulary

<b>herbivore</b>	An animal that eats plants.
<b>carnivore</b>	An animal that feeds on other animals.
<b>omnivore</b>	An animal that eats plants and animals.
<b>producer</b>	An organism, such as a plant, that produces its own food.
<b>predator</b>	An animal that hunts and eats other animals.
<b>prey</b>	An animal that gets hunted and eaten by another animal.

### To help prevent tooth decay:

- limit sugary food and drink;
- brush teeth at least twice daily using a fluoride toothpaste;
- visit your dentist regularly.

