



# The Gusford Gazette

Advent starts on Sunday. First calendar door on Monday. It's coming!

Issue 2591

Friday 28th November 2025

Circulation: 570

## Macbeth

On Tuesday evening, our Year 5 players performed a brilliant version of Macbeth at Dance East. It was a magnificent effort from all the children. Wonderful support from our parents, Miss Knights and especially Mrs Slater and Mrs Ingram. Thank you.



## Robins Go Recycling

On Wednesday morning, as part of their English work, our Year 5 Robins visited the recycling centre. They had a great time and learnt a lot about the importance of recycling.

## Lunch Money

Please can I remind all parents to keep their lunch payments up to date. We don't like ringing up and asking for it to be topped up but it is only fair that we do. Many thanks.

## Our New Flag

Have you seen our new flag? Harrison designed it and it looks great!

## Parent Workshops

It was lovely to see lot of our parents at the phonic and fluency workshops this week. Thank you.

## Gusford Diary Dates

(certain dates are subject to change)

**Year 1 & 2 Alice in Wonderland Theatre Trip.** Tuesday 2nd December

### Open Session

Thursday 4th December 1.45-2.45pm

### Nativity Performances

EYFS Wiggly Nativity Thursday 4th December 10.30am

EYFS Wiggly Nativity Friday 5th December 2.15pm

KS1 Stable Boy Wednesday 17th December 2.00pm

KS1 Stable Boy Thursday 18th December 2.00pm

**Carols from Gusford.** Thursday 4th December. 6.30pm. Stoke Park Church.

**Santa Fun Run.** Sunday 7th December 9.30am on school field

**Bluey and SYC Alice in Wonderland.** Tuesday 9th December

**Christmas Bazaar.** In the hall and on the playground from 3.30pm on Tuesday 9th December.

**Christmas Lunch** Wednesday 10th December

**Christmas Jumper Day.** Friday 12th December. All money raised to support our community food store.

**School Discos.** Tuesday 16th December.

**ITFC Blue Day (non-uniform).** Friday 19th December. No donation just celebration of all things Ipswich.

**Find Santa.com.** Sunday 21st December. Santa mug hunt

**Choir performing on BBC Radio Suffolk.**

**End of Term 2.** Friday 19th December. We return on Tuesday 6th January

**January Photography Competition; 'Winter Watch'**

### Bikeability

Group 1 26th to 29th January

Group 2 2nd to 5th February

**Two Johns Internet Safety.** Tuesday 13th January 2026

**Big Schools' Bird Watch.** Friday 16th January 2026

**Choir at Young Voices O2.** Tuesday 20th January 2026

**Henry VIII Commemoration,** Wednesday 28th January 2026

**World Cancer Awareness Day.** Wednesday 4th February 2026

**NSPCC Number Day.** Friday 6th February 2026

**Performing Arts Festival.** Thursday 26th February 2026

**World Book Day.** Thursday 5th March 2026

**Red Nose Day Friday** 13th March 2026

### Carols from Gusford 4th December

We are very excited about Carols from Gusford (6.30pm at St Peter's Church, Stoke on Thursday 4th December). Everyone is welcome. The services are very relaxed, the seats are comfortable and the service won't last too long. It really will be a joyous celebration.

### Santa Fun Run 7th December

Sunday 7th December starting 9.30am. Walk, jog or run. Everyone is welcome. You can use the QR code to sign up or come and see us in the front office. Everyone who takes part gets a medal, a drink and a santa hat. We are hoping Santa himself is going to make an appearance. Exciting times!

### Christmas Bazarre 9th December

Are you ready? On Tuesday 9th December we are holding a Christmas Bazarre. Each Year Group are running their own stall plus refreshments and fun. After school starting 3.13pm.

### School Disco 16th December

Tuesday 16th December. Please note that your child is unlikely to be invited to the disco if they are making bad choices in school. Tickets available now on Arbor.

<https://www.facebook.com/share/v/1AKDYXSK4m>

### BBC Radio Suffolk 24th December

Christmas is coming and the goose is getting fat...and our Choir have been asked to perform LIVE on Wayne Bavin's [BBC Suffolk](#) Breakfast Show 8am-9am on Christmas Eve morning. Invites to follow.

### Advent

Advent is the lead up to Christmas when Christians celebrate the birth of Jesus. This year Advent starts on Sunday 30th November (the fourth Sunday before 25th December). We will light our first candle on the Advent wreath in school on Monday 1st December.

### The Santa Sleigh

Santa is a busy man so don't miss his sleigh route around Ipswich: [Sleigh route](#)

### Peace (Baby Memory) Garden

The bulbs are starting to show in our peace (baby loss) garden.



### Christmas Challenge

Can you make the cube attached? Perhaps you can decorate it (before making it) with 6 things you love about Christmas, then bring it in and hang it on our tree.



### Pick Up After School

We like parents to chat at pick up time at the end of the day but we also encourage parents to leave by 3.35pm. This means we can close doors and gates and let our after school club children out to play.

#### Attendance Matters

Our Attendance this week was 95.3%. We are still aiming for 97% by the end of the year. Thank you for your support in this matter.

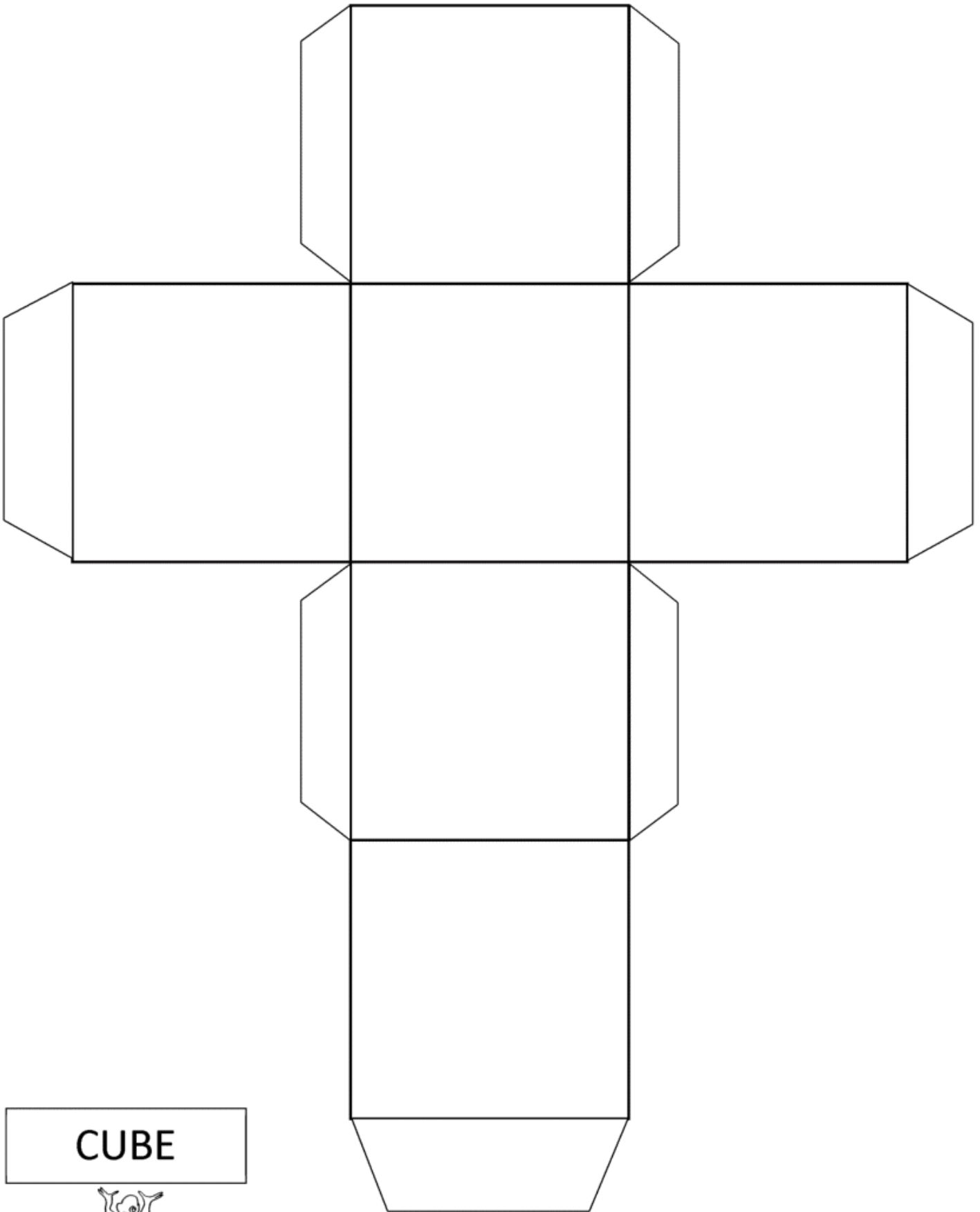
#### Coughs and colds

If you are uncertain whether to send your child to school or not then please follow the NHS advice below.

<https://www.nhs.uk/live-well/is-my-child-too-ill-for-school/>

#### Holidays in Term Time

Please note all holidays in term time will be followed by a fine. This is national policy. The fines go to Suffolk County Council and not the school.



CUBE



## Age Ratings

It has come to our attention that a number of children within the school have access to television programmes, films and online content which has an age certificate rating above their age. Please be aware that age certificates are used for good reason and children who are exposed to content which is not appropriate for them are often significantly affected by what they have seen. This can present as anxieties, inappropriate behaviours and inappropriate language. Please do not let your child access online content which is not age appropriate. If children within the school talk about watching or accessing inappropriate material, this will be recorded as a safeguarding concern and followed up by a member of staff.



### *A guide for parents of primary school children*

---

#### Films

- Age ratings help protect children from content that may be frightening, confusing or inappropriate.
  - Always check BBFC ratings before watching.
  - **U** and **PG** are generally suitable for primary-aged children.
  - Avoid **12/12A**, **15** and **18** content.
- 

#### Video Games

- Game ratings (PEGI) show if content includes violence, strong language or online interaction.
  - Suitable ratings for primary age children: **PEGI 3** and **PEGI 7**.
  - Avoid **PEGI 12**, **16** and **18**.
- 

## Social Media

Most major social media platforms have a **minimum age of 13**. - These platforms can expose children to inappropriate content or online strangers. - Use child-friendly alternatives or supervised accounts.

---

## Why Age Ratings Matter

- They protect children's wellbeing.
  - They support healthy emotional and social development.
  - They help create safe digital habits for life.
- 

### Top Tips for Parents

- Check ratings before your child plays, watches or downloads.
  - Use parental controls on TVs, devices and consoles.
  - Talk to your child about what they watch and play.
  - Set clear boundaries around screen time.
- 

**\*\*Keeping children safe starts with informed choices.**

---



## **Safeguarding Children**

We are aware that parents sometimes have concerns about the welfare of other children in the school or within their community. As parents, you are often aware of problems or issues that we, as a school do not have information about. Safeguarding children and young people is everyone's responsibility and it is important that we all know how to report concerns to the appropriate people. If you feel that you have information about a child or young person who is at risk of harm; whether that is neglect, emotional abuse, sexual abuse or physical abuse, please contact Customer First on 0800 800 4005 or via their online report forms. This can be done entirely anonymously, so you do not need to worry about others knowing that you have shared the concern. If you are unsure if the information you have warrants a safeguarding concern or want support around the worries that you have, please feel free to contact the school and ask to speak to one of the safeguarding team.



**Suffolk**  
County Council

# **SAFEGUARDING CHILDREN**

Suffolk County Council is committed to  
**safeguarding children.**

To report a child at risk of harm, abuse  
or neglect, you can contact Customer  
First on

**0808 800 4005**



# Carols from Gusford

Featuring the Gusford Choir

Thursday 4th  
December 2025  
6:30pm

@ St. Peter's Church,  
Stoke Park Drive



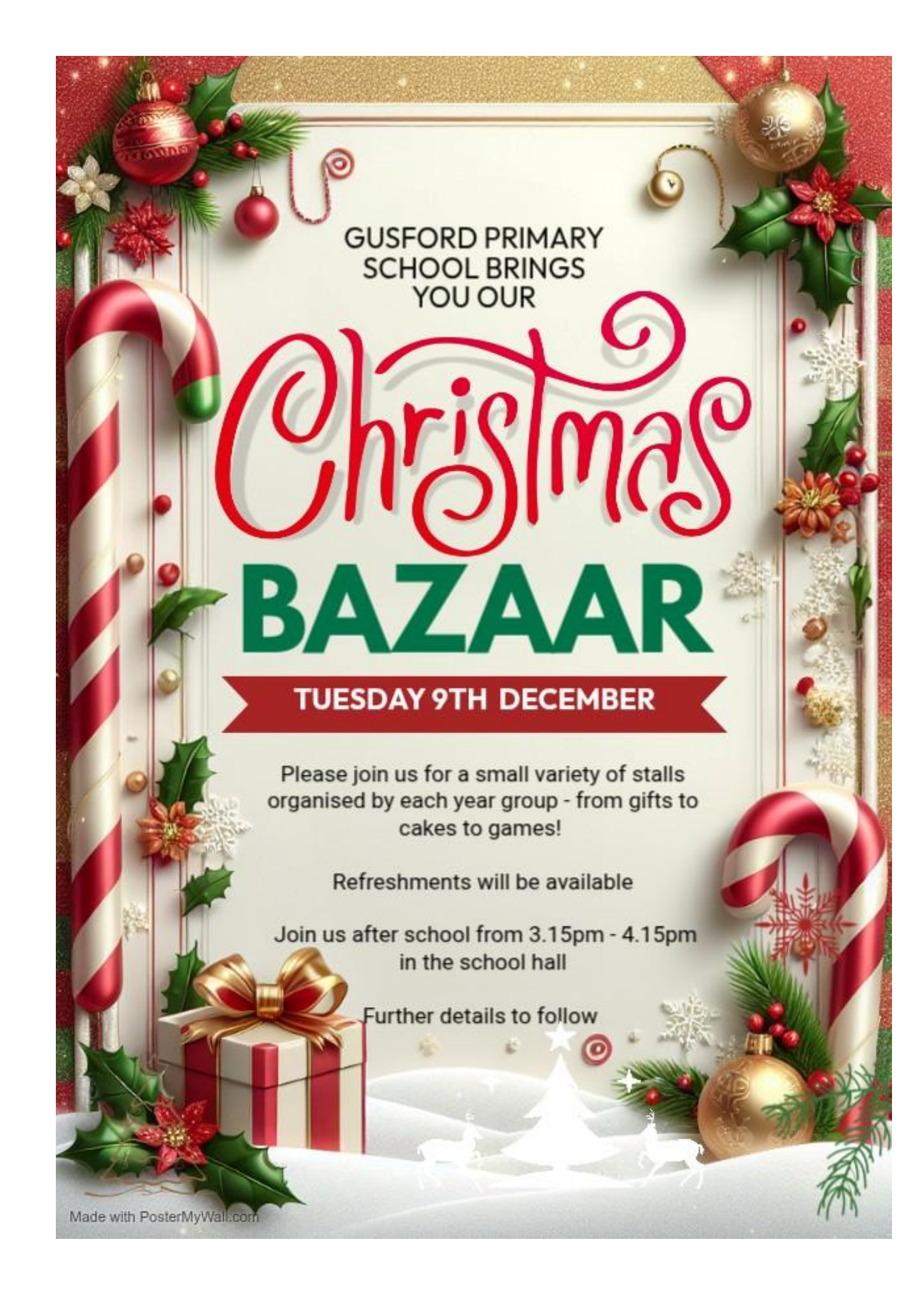
All members of the Gusford Community  
are welcome to join our Christmas  
celebration.

Refreshments will be served afterwards.



Adobe Express





GUSFORD PRIMARY  
SCHOOL BRINGS  
YOU OUR

# Christmas BAZAAR

**TUESDAY 9TH DECEMBER**

Please join us for a small variety of stalls  
organised by each year group - from gifts to  
cakes to games!

Refreshments will be available

Join us after school from 3.15pm - 4.15pm  
in the school hall

Further details to follow





**Ipswich  
Symphony  
Orchestra**

# **FAMILY CONCERT**

Featuring the  
Gusford Primary School Choir

Extracts from:

**DVOŘÁK**

Slavonic Dance Op 46 No 1

**COPLAND**

Four Dance Episodes from Rodeo

**BIZET**

Carmen Suite No 1 & No 2

**BRAHMS**

Hungarian Dance No 1

**STRAVINSKY**

The Firebird Suite

**MUSSORGSKY**

Pictures at an Exhibition

**KODÁLY**

Háry János Suite

Conductor  
Adam Gatehouse  
Leader  
Steve Browne

**Sunday 1 March 2026 2.30pm**

**Corn Exchange, King Street, Ipswich IP1 1DH**

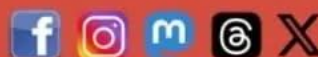
## **TICKETS**

From £12 adults / £9 under 18s

[www.ipswichtheatres.co.uk](http://www.ipswichtheatres.co.uk), from orchestra members and on the door

Box office 01473 433 100

[www.ipswichsymphonyorchestra.org](http://www.ipswichsymphonyorchestra.org) Registered charity #276724







# RECEPTION OPEN DAYS

A place your child will  
discover, learn and love  
every moment

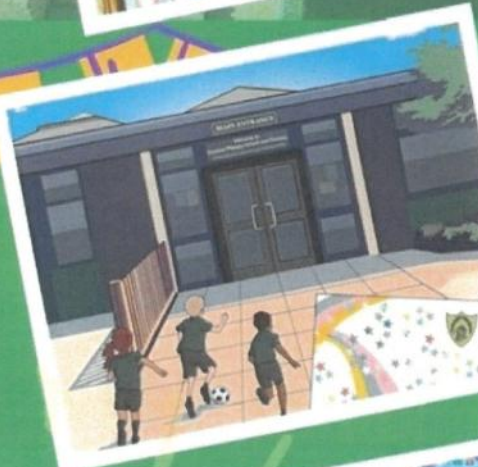
Call our office to book  
01473 682148



22 Oct  
10.15am–  
11.15am

11 Nov  
5pm –  
6pm

4 Dec  
1.45pm –  
2.45pm



<http://www.gusfordprimary.net>



01473 682148





# WRAP AROUND CARE

Monday to Friday

- Supervised by school staff from school premises
- Light healthy snack at all sessions
- Indoor and outdoor activities

**BOOK NOW ON ARBOR OR CONTACT  
01473 682148**

SHORT 3.15PM-4.15PM	£4
LONG 3.15PM-5.00PM	£7
EXTRA 3.15PM-5.30PM	£10

**MORE INFORMATION**

[admin@gusfordprimary.net](mailto:admin@gusfordprimary.net)





# DOES YOUR CHILD NEED A LITTLE EXTRA HELP?

Conquer the core subjects with Kip McGrath.

- ✓ Maths
- ✓ English
- ✓ Reading
- ✓ Spelling
- ✓ 11 Plus
- ✓ GCSE

## BOOK YOUR FREE ASSESSMENT NOW !!!

Ipswich-West\* 01473903966/07359609888

22 Falcon Street, Ipswich, IP1 1SL



[www.kipmcgrath.co.uk/email: ipswichwest@kipmcgrath.co.uk](http://www.kipmcgrath.co.uk/email: ipswichwest@kipmcgrath.co.uk)

## SANTA FUN WALK / RUN

Sunday Morning 9am 7<sup>th</sup> December 2025-  
Three laps round the school grounds (2K)-  
Free Refreshments-  
Event Medal for all Participants-  
Event Photography-  
Great Fun All Round-

For Further Information Contact;  
Paul Rivett (School Business Manager)  
[privett@gusfordprimary.net](mailto:privett@gusfordprimary.net)





## Autumn / Winter Menu Week 1

10<sup>th</sup> Nov, 1<sup>st</sup> & 22<sup>nd</sup> Dec, 19<sup>th</sup> Jan, 9<sup>th</sup> Feb, 2<sup>nd</sup> & 23<sup>rd</sup> March

Eativerse  
A UNIVERSITY OF HULL AND BRISTOL

WEEK ONE	FAVOURITES MONDAY	WORLD TUESDAY	ROAST WEDNESDAY	PIZZA PARTY THURSDAY	FISH FRIDAY
Main Meal Option 1	Red Tractor Pork Sausage Roll & Home-baked Potato Wedges	Beef Taco with Corn Tortilla, Tomato Sauce & Sunny Rice	Roast Chicken Gravy, Stuffing & Roast Potatoes	Wholemeal Tomato & Cheese Pizza & Home-baked Potato Wedges	MSC Fish Fingers & Chips
Main Meal Option 2	Macaroni Cheese	Italian Quorn Meatballs served with Pasta <sup>VG</sup>	Quorn Grill, Gravy, Stuffing & Roast Potatoes	Vegetable Sausage in a Bun with Home-baked Potato Wedges <sup>VG</sup>	Vegetable Fingers & Chips with Ketchup <sup>VG</sup>
Halal Option	Halal Chicken Sausage Roll & Home-baked Potato Wedges	Beef Taco with Corn Tortilla, Tomato Sauce & Sunny Rice	Halal Roast Chicken, Gravy, Stuffing & Roast Potatoes	Wholemeal Tomato & Cheese Pizza & Home-baked Potato Wedges	
Sandwich Box	Cheese	Ham	Tuna Mayonnaise	Ham	Cheese
Vegetables	Baked Beans & Sweetcorn	Mixed Salad or Broccoli	Seasonal Greens & Carrots	British Red Tractor Garden Peas, Sweetcorn	British Red Tractor Garden Peas, Baked Beans
Sandwiches, Rice & Pasta	Freshly Made Sandwich with Cheddar, Tuna Mayonnaise or Ham / Jollof Rice with 5 Beans / Pasta with Cheese or Tomato & Basil Sauce				
Baked Jacket Potatoes	Jacket Potato with Cheese or Beans	Jacket Potato with Cheese or Beans	Jacket Potato with Cheese or Beans	Jacket Potato with Cheese or Beans	Jacket Potato with Cheese, or Beans
Dessert	Vanilla Shortbread <sup>VG</sup> & Chocolate Sauce	Chocolate & Pear Crumble <sup>VG</sup> & Custard	Strawberry Jelly <sup>VG</sup>	Oaty Date Cookie	Vanilla Ice Cream

Available Daily: Salad, Fresh Bread, Fresh Fruit & Yoghurt

## Autumn / Winter Menu Week 2

27<sup>th</sup> Oct, 17<sup>th</sup> Nov, 8<sup>th</sup> Dec, 5<sup>th</sup> & 26<sup>th</sup> Jan, 16<sup>th</sup> Feb, 9<sup>th</sup> March

Eativerse  
A UNIVERSITY OF HULL AND BRISTOL

WEEK TWO	FAVOURITES MONDAY	WORLD TUESDAY	ROAST WEDNESDAY	PIZZA PARTY THURSDAY	FISH FRIDAY
Main Meal Option 1	Pork Sausage & Mash with Gravy	Red Tractor Beef Pasta Bolognese & Garlic Bread	Roast Chicken, Gravy, Yorkshire Pudding & Roast Potatoes	Wholemeal Margherita Pizza & Home-baked Potato Wedges	MSC Battered Pollock & Chips
Main Meal Option 2	Veggie Sausage & Mash with Gravy <sup>VG</sup>	Plant-based Pasta Bolognese & Garlic Bread	Quorn Grill, Gravy, Yorkshire Pudding & Roast Potatoes	Macaroni Cheese	Cheese Flan & Chips
Halal Option	Halal Chicken Sausage & Mash with Gravy	Halal Red Tractor Beef Pasta Bolognese & Garlic Bread	Halal Roast Chicken, Gravy, Yorkshire Pudding & Roast Potatoes	Wholemeal Margherita Pizza & Home-baked Potato Wedges	
Sandwich Box	Cheese	Ham	Tuna Mayonnaise	Ham	Cheese
Vegetables	Broccoli, Sweetcorn or Baked Beans	Broccoli, Cauliflower & Carrots	Seasonal Greens & Carrots	British Red Tractor Garden Peas, or Sliced Carrots	British Red Tractor Garden Peas, Baked Beans
Baked Jacket Potatoes	Jacket Potato with Cheese or Beans	Jacket Potato with Cheese or Beans	Jacket Potato with Cheese or Beans	Jacket Potato with Cheese or Beans	Jacket Potato with Cheese or Beans
Dessert	Shortbread Pin Wheels & Fruit Slices <sup>VG</sup>	Chocolate Fudge Cake	Apple Crumble <sup>VG</sup> & Custard	Flapjack <sup>VG</sup>	Chocolate Mousse

Available Daily: Salad, Fresh Bread, Fresh Fruit & Yoghurt

## Autumn / Winter Menu Week 3

3<sup>rd</sup> & 24<sup>th</sup> Nov, 15<sup>th</sup> Dec, 12<sup>th</sup> Jan, 2<sup>nd</sup> & 23<sup>rd</sup> Feb, 16<sup>th</sup> March

Eativerse  
A UNIVERSITY OF HULL AND BRISTOL

WEEK THREE	FAVOURITES MONDAY	WORLD TUESDAY	ROAST WEDNESDAY	PIZZA PARTY THURSDAY	FISH FRIDAY
Main Meal Option 1	Beef Burger with Home-baked Potato Wedges	Mild Chicken Curry served with Mixed Rice	Roast Chicken, Gravy, Stuffing & Roast Potatoes	Margherita Pizza with Home-baked Potato Wedges	MSC Fish Fingers & Chips
Main Meal Option 2	Vegetable Burger with Home-baked Potato Wedges <sup>VG</sup>	Vegetable Sausage Hotdog served with Home-baked Wedges	Quorn Grill, Gravy, Stuffing & Roast Potatoes	Vegetable Lasagne & Garlic Bread	Crispy Vegetable Fingers & Chips <sup>VG</sup>
Halal Option	Beef Burger with Home-baked Potato Wedges	Halal Mild Chicken Curry served with Mixed Rice	Roast Chicken, Gravy Stuffing & Roast Potatoes	Margherita Pizza with Home-baked Potato Wedges	
Sandwich Box	Cheese	Ham	Tuna Mayonnaise	Ham	Cheese
Vegetables	Sweetcorn, Baked Beans	Broccoli, Cauliflower & Carrots	Seasonal Greens & Carrots	Broccoli or Sweetcorn	British Red Tractor Garden Peas, Baked Beans
Baked Jacket Potatoes	Jacket Potato with Cheese or Beans	Jacket Potato with Cheese or Beans	Jacket Potato with Cheese or Beans	Jacket Potato with Cheese or Beans	Jacket Potato with Cheese or Beans
Dessert	Chocolate Oaty Slice <sup>VG</sup>	Syrup Sponge Pudding & Custard	Apple & Cinnamon Rolls	Vanilla Cookie & Fruit Slices <sup>VG</sup>	Iced Sponge Cake with Sprinkles

Available Daily: Salad, Fresh Bread, Fresh Fruit & Yoghurt