

What else does it look like?



What sound does it start with?

n and y

New Year

What does it look like?



How many syllables does it have?

1 and 1

What else does it look like?



What sound does it start with?

S

celebrate

What does it look like?



How many syllables does it have?

3

How long is a week?

- Monday
- Tuesday
- Wednesday
- Thursday
- Friday
- Saturday
- Sunday

What sound does it start with?

l and w

last week

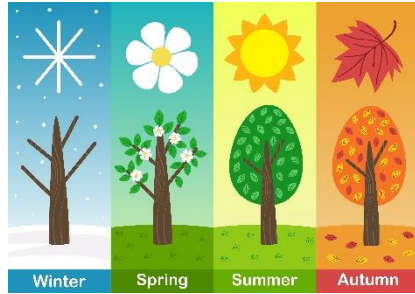
What does it look like?



How many syllables does it have?

1 and 1

How long is a year?



What sound does it start with?

l and y

last year

What does it look like?



How many syllables does it have?

1 and 1