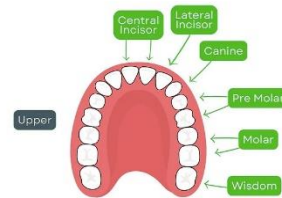
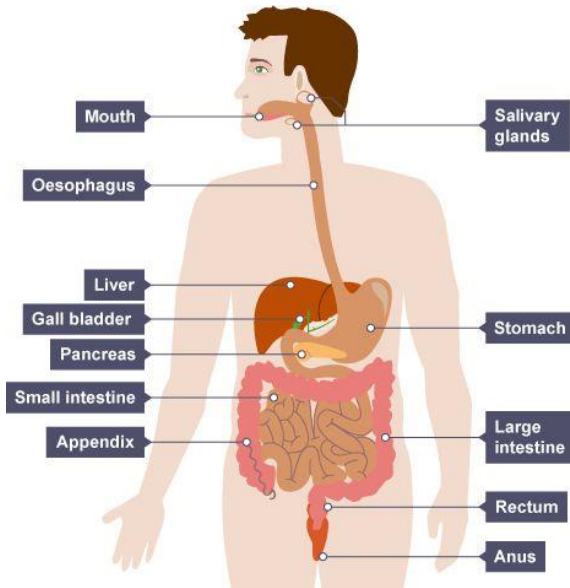
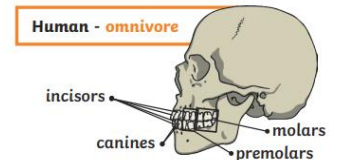
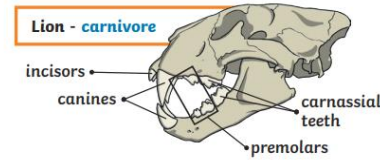
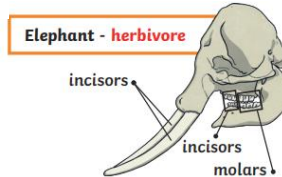
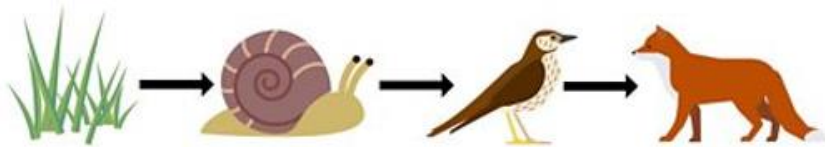




# Year 4 - Spring 1 - Animals including Humans



Key Facts	
<b>Incisors</b>	are the large flat teeth with straight edges that are at the front of the mouth for biting and cutting.
<b>Canines</b>	are the sharp tearing teeth found at the side of the mouth behind the incisors.
<b>Premolar</b>	are the teeth between the molars and the canines that are used for holding and crushing.
<b>Molars</b>	are the large teeth at the back of the mouth with a broad surface for grinding.
The teeth of an animal are designed to eat different food depending on the diet of the animal.	



## Key Vocabulary

<b>Digestive System</b>	The system for breaking down food.	<b>Rectum</b>	Faeces are stored in the rectum and leave the body via the anus.
<b>Oesophagus</b>	A tube that moves food from mouth to stomach.	<b>Producer</b>	A living thing that produces its own energy.
<b>Stomach</b>	An organ that breaks down food using acid and by churning food around.	<b>Consumer</b>	A living thing that eats animals and plants to produce energy.
<b>Small intestine</b>	An organ where nutrients from food are absorbed into the blood.	<b>Prey</b>	An animal that is hunted by other animals for food.
<b>Large intestine</b>	An organ where water from food is absorbed.	<b>Predator</b>	An animal that hunts other animals for food.

