

NEW PRIMARY SCHOOL EXPANSION AT HANSLOPE PRIMARY SCHOOL

Dear Resident

To all properties neighbouring the Proposed Extension to Hanslope Primary School and New All Weather Pitch, Hanslope Primary School for Milton Keynes Council

Further to our Public Consultation Newsletter dated 14th August 2020 we are writing to provide a further update in relation to the project.

The project team are delighted to advise that the scheme obtained planning approval on the 2nd March 2021.

We have already segregated within the school grounds the area of the proposed extension. We are currently undertaking off site mobilisation works with a view to commencing initial site enabling works in the next two to three weeks. The project is due for completion in early 2022.

With a view to minimising any disruption to the sites neighbours we will be utilising the recently formed future Doctors Surgery car park entrance off Castlethorpe Road. A temporary road will be then laid to and then within the boundary of the school site for dedicated construction traffic access.

Should a concern or problem arise during the construction period, then please contact our project team as detailed below:

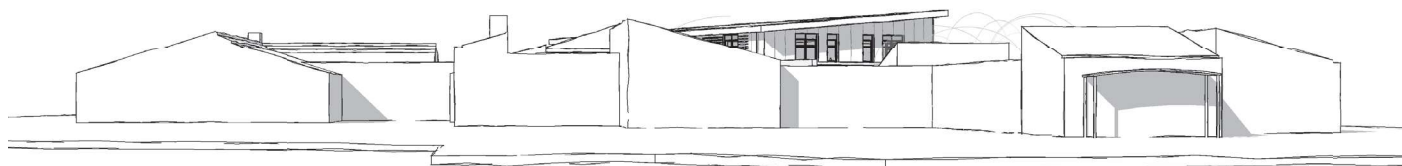
Email: HanslopePS@rgcarter.co.uk

Dan Cox - Project Manager

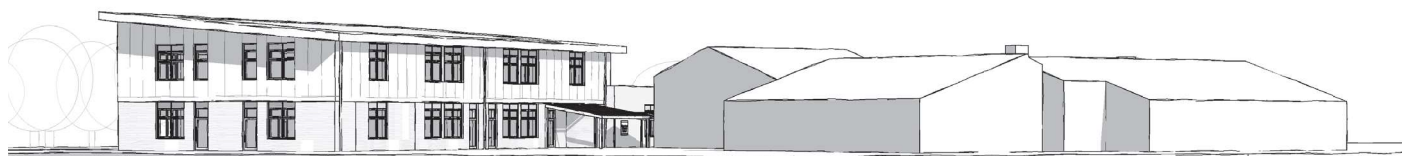
Paul Lepage - Site Manager

Further periodic newsletters will follow as the project proceeds to keep you informed of progress.

We look forward to your ongoing support in delivering these vital provisions for the local community.



View from Front of School



View from Playing Field

SITE PLAN

