

Community Resilience  
Respect Learning Integrity Potential Creativity

*To prepare our children to reach their full potential in a modern, evolving and diverse world.*  
**Summer 1 2025-26 – Week 4**

## HANSLOPE PRIMARY SCHOOL WEEKLY NEWSLETTER

### Hanslope School's Annual Summer Fayre!

We are excited to be planning our upcoming **Summer Fayre** which will take place this year on **Saturday 27th June from 12-3** and would love to hear from anyone who would like to get involved! If you run a business, craft handmade items, hot food items, sweet treats or would like to host a bric-a-brac stall, we warmly invite you to be part of this community event. It's a fantastic opportunity to showcase your products, connect with others, and support the school.

If you're interested in reserving a pitch, please email [harriet.lovegood@hanslope.milton-keynes.sch.uk](mailto:harriet.lovegood@hanslope.milton-keynes.sch.uk) to secure your spot. We look forward to making this a fun and successful event for everyone!





## A Summer Fayre plea!

If anyone in the Hanslope community knows of a company, or works for someone who might be able to lend us some **free-standing display boards** for the summer fair, we would be so grateful! We are hoping to use them this year so that the children's artwork can be pinned to boards instead of hung on washing lines.



## Hanslope School's Official Facebook Group

Please join our [Facebook group](#) where we post about upcoming events. It's the best way to keep posted! To join, follow this link:

<https://www.facebook.com/groups/385370060554710/>



# Year 1's Trip to Woburn Safari Park

Year 1 had a fantastic trip to Woburn Safari Park last week, where they saw a wide variety of animals, including lions, giraffes, and monkeys, building on their science learning. The children were incredibly excited in the lead-up to the trip and loved seeing so many different animals up close. They particularly enjoyed the walking safari, with the penguins and squirrel monkeys proving to be firm favourites. One of the highlights of the day was a cheeky monkey jumping onto our coach! The children behaved wonderfully and represented the school brilliantly throughout the day. We are now looking forward to using this experience as inspiration for our writing in English lessons.



## Hanslope School's Outdoor Area Needs YOU!

We're looking to expand our outdoor play resources with more 'loose parts' such as tyres, wooden slats, and crates to support children's creativity, problem-solving, and imaginative play.

These simple materials provide endless opportunities for children to build, explore, and collaborate.

If you have any suitable items to donate, or know of local businesses or organisations that may be able to provide them for free, we'd love to hear from you. All items will be checked to ensure they are safe for use.

Thank you for your continued support in enriching our outdoor environment.



# Extra-Curricular Celebrations!

Recently, at the St George's Day parade for Milton Keynes scouts, Alfie in Year 3 was presented with an award for first place in a competition to design a badge to commemorate their 40th birthday. Alfie's drawing was brilliant, and the judges were thoroughly impressed by his creativity and how well he captured the spirit, fun, and friendship of being a Beaver Scout.

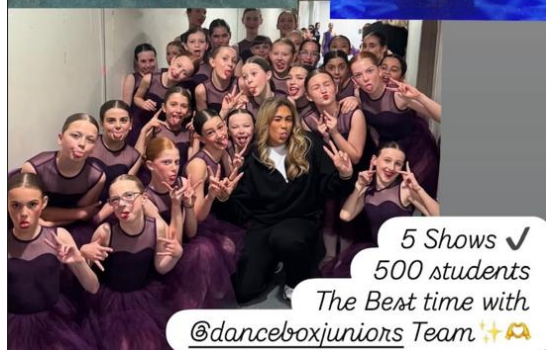
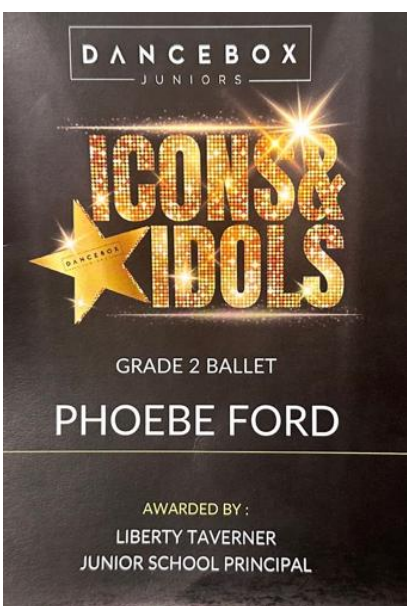
The most exciting part is that **Alfie's winning design is going to be made into a real, official badge!** Soon, Beavers all across our area will be proudly wearing the badge he created on their uniforms to celebrate this special milestone.

I am sure you will all join us in saying a massive "Well Done!" to Alfie for his amazing achievement. We are so proud to have such wonderful talent in our school community!

Alfie and family reported that it was a fantastic afternoon and he was even congratulated by the Mayor of Milton Keynes! Here are some pictures from the day:



Over the Easter break, **Phoebe in Year 6** took part in her dance school's production, *Icons and Idols*, a spectacular showcase celebrating music and dance icons through the ages. Phoebe's dance journey began at just two years old, with her first appearance on stage coming at the age of three. Starting with ballet, she has since expanded her skills to include several other styles, demonstrating dedication and versatility. The production ran across three days, featuring five shows and more than 500 performers. Phoebe performed four different styles of dance in each show, reflecting both her hard work and growing experience as a dancer. The event concluded on a high note when, during the final day's awards ceremony, Phoebe was recognised by the teaching staff for her ballet performance — a fantastic achievement and a proud moment for both Phoebe and her family.



At Hanslope School, we are incredibly proud of the wonderful achievements our pupils make both in and out of the classroom. Whether it's sports, music, art, volunteering, competitions, clubs, or even personal milestones - **we'd love to hear about it!** If your child has done something fantastic outside of school that you think deserves a special mention, please let us know so we can celebrate it in our school newsletter or Facebook group. Big or small, every achievement matters!

✉ **Send your stories, photos or details to:**  
[emma.norris@hanslope.milton-keynes.sch.uk](mailto:emma.norris@hanslope.milton-keynes.sch.uk)

## School Council's 'Great Cereal Topple'

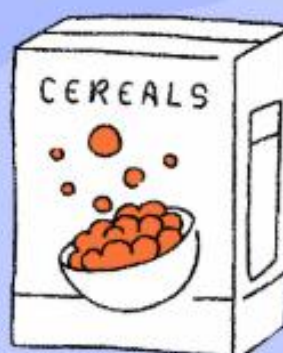
**CHARITY  
FUNDRAISING**



FROM MAY 5TH - MAY 22ND, THE SCHOOL COUNCIL ARE ASKING IF YOU COULD PLEASE DONATE CEREAL BOXES FOR OUR 'GREAT CEREAL TOPPLE'

WE ARE DOING THIS TO SUPPORT MK FOOD BANK. ANY DONATIONS WOULD BE GREATLY APPRECIATED AND CAN BE GIVEN TO YOUR CLASS TEACHER.

**HOW MANY  
CEREAL BOXES  
CAN WE  
COLLECT?**



PLEASE EMAIL  
L.GOODWIN@HANSLOPE.  
MILTON-KEYNES.SCH.UK  
IF YOU HAVE ANY  
QUESTIONS

## External Advertisement

# Could this be the year you change a child's life?

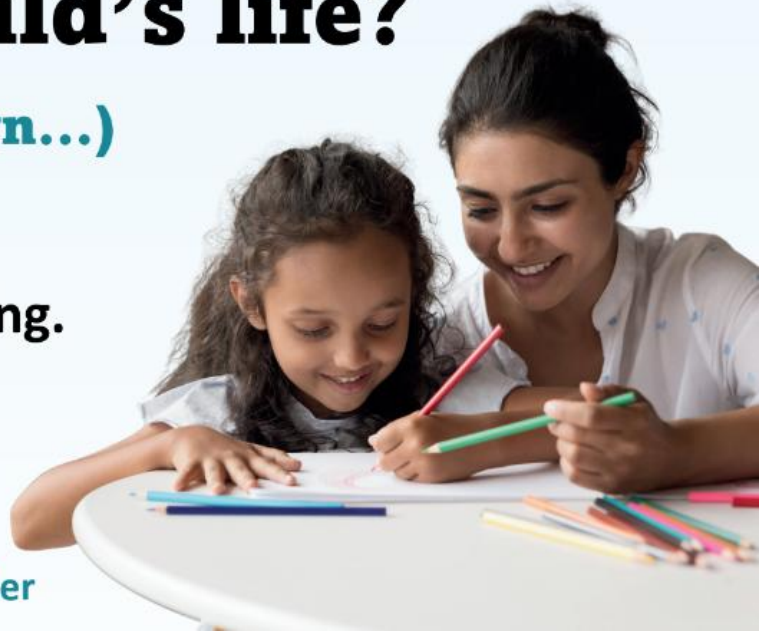
(and maybe your own...)

Talk to us about fostering.

Call us on

**01908 253206**

[www.mkcounciljobs.org.uk/foster](http://www.mkcounciljobs.org.uk/foster)



## Dates for your calendar

Remember, it is possible to sync the school calendar on our website onto your phone by following this link: <https://www.hanslopeschool.co.uk/calendar-help>  
Here is a reminder of the upcoming diary dates for you to plan ahead. Please note that all the dates and times shown here are accurate at the time of publication - alterations to the information listed below may happen due to unforeseen circumstances; if this does occur, we will endeavour to let you know as quickly as possible.

Week beginning Mon 11<sup>th</sup> May - Year 6 SATS Week

Week beginning Mon 18<sup>th</sup> May - 'Walk to School' week

Tuesday 19<sup>th</sup> May - 8.30-8.55 - EYFS and KS1 (Foundation, Y1 and Y2) parents invited for STEM morning

Wednesday 20<sup>th</sup> May - 8.30-8.55 - LKS2 (Y3 and Y4) parents invited for STEM morning

Weds 20<sup>th</sup> May - School Photos

Thursday 21<sup>st</sup> May - 8.30-8.55 - UKS2 (Y5 and Y6) parents invited for STEM morning


Fri 22<sup>nd</sup> May - TERM ENDS


Mon 1<sup>st</sup> June - INSET Day

Tuesday 2<sup>nd</sup> June - School Re-opens for Summer 2



 **Website:** <https://www.hanslopeschool.co.uk/>

 **Contact:** 01908 510245

 **Email:** [ryan.brown@hanslope.milton-keynes.sch.uk](mailto:ryan.brown@hanslope.milton-keynes.sch.uk)

