

**Community Resilience**  
Respect Learning Integrity Potential Creativity

*To prepare our children to reach their full potential in a modern, evolving and diverse world.*

**Summer 1 2024 – Week 5**

## HANSLOPE PRIMARY SCHOOL HEADTEACHER'S WEEKLY NEWSLETTER

### Hanslope School's Summer Fair



**Saturday 13<sup>th</sup> July from 11am-3pm**

Hanslope School's  
Summer Fair is **BACK**  
for 2024!

~

*Food, games, stalls and activities will all be happening at the school on Saturday 13<sup>th</sup> July 2024.*

~

*We have not been able to have a summer fête in a long time due to the pandemic so this year we will be going all in.*

~

*We hope to see you and your families there.*

*Parents, WE NEED YOU! Do you have a business or a side-hustle that you wish to promote? If you, or anyone you know, wishes to run a stall or help out in any way at all, then please contact Hanslope School's PTA on:*

[pta@hanslope.milton-keynes.sch.uk](mailto:pta@hanslope.milton-keynes.sch.uk) ASAP! We'd love to hear from you!

## We need YOUR HELP!

After the **incredible** amount school council raised for Comic Relief last half-term (over £300!) we would LOVE if we could once again have your support for some donations to school for our **Summer Fair BONANZA** - with the money raised going towards a trim trail for the whole school.

We were hoping to include a sale of pre-loved **soft toys, other toys and books.**

If you have any of these things going spare, please bring them into school and hand them over to your child's class teacher.



We also would be incredibly grateful for some **donations to the raffle** we will be having on the day of the **Summer Fair**. Do you: run a business that you're happy to donate a voucher for in order to promote it? Have any gifts, like chocolates or bottles of alcohol, you are happy to contribute? We would absolutely love anything you deem to be a worthy raffle prize!

## Hanslope School's Official Facebook Group

Please join our **Facebook group** where we post about upcoming events. It's the best way to keep posted! To join, scan the QR code, or follow the link below!

<https://www.facebook.com/groups/385370060554710/>

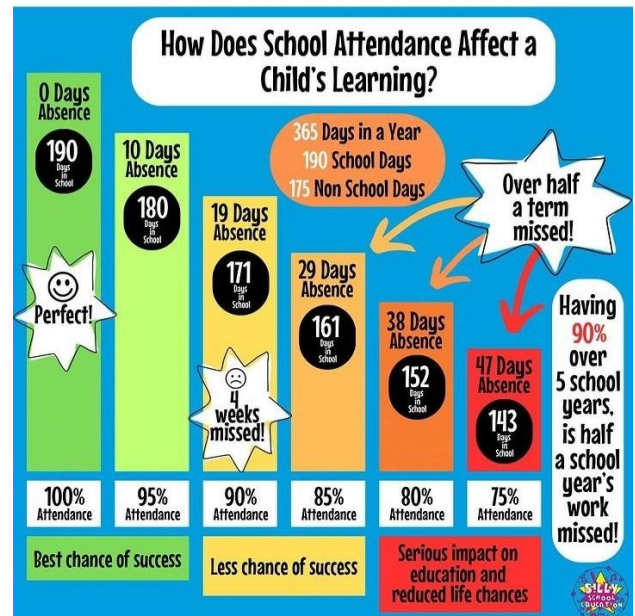


# Weekly Attendance Figures

Our whole school attendance target is 95% or more for the end of this academic year. Below is a breakdown of each class's attendance **from last week**. Well done to **Larch** Class for having the highest attendance rate!

Holly	87.5
Maple	90.4
<b>Larch</b>	99.3
Laurel	90.8
Alder	97.7
Elm	98.5
Oak	91
Rowan	94
Cedar	96.6
Redwood	90.9
Blackthorn	84.9
Hawthorn	91.5
Lime	90.6
Poplar	97.2

**School Total 92.7%**



## Did you know...

If your child finishes the year with **95% attendance** they will still have missed 10 school days, which equates to around **55 hours of learning time**?

In fact, if your child misses just one day in the week it equates to them missing **20%**, with their weekly attendance sitting at just **80%**.

**Remember: every day counts!**

## Workshop for Parents/Carers of SEND children



### Parent workshop with Occupational Therapy Team

Join our session for parents/carers of children and young people with SEND to hear some practical advice on how to support your child or young person with everyday activities.

The workshop will include information on:

- How to support your child/ young person, including their sensory system and the environment
- When and how to refer to Milton Keynes Occupational Therapy Team

**When:** Thursday 02 May 2024 1:00 – 2:30pm

**Where:** Hedgerows Children Centre

**Who will deliver the session?** Milton Keynes Occupational Therapy Team

**To book your place email** SENDsupport@milton-keynes.gov.uk



## School Photos

Class Photos will be taken on **Monday 20<sup>th</sup> May**. This will also be when Year 6 have their individual school photos taken. If your child[ren] have PE on this day, please can they **wear their school uniform** to school and **bring their PE kit in** to ensure they are in uniform for their photographs. Thank you!



## Workshop for Parents/Carers of SEND children

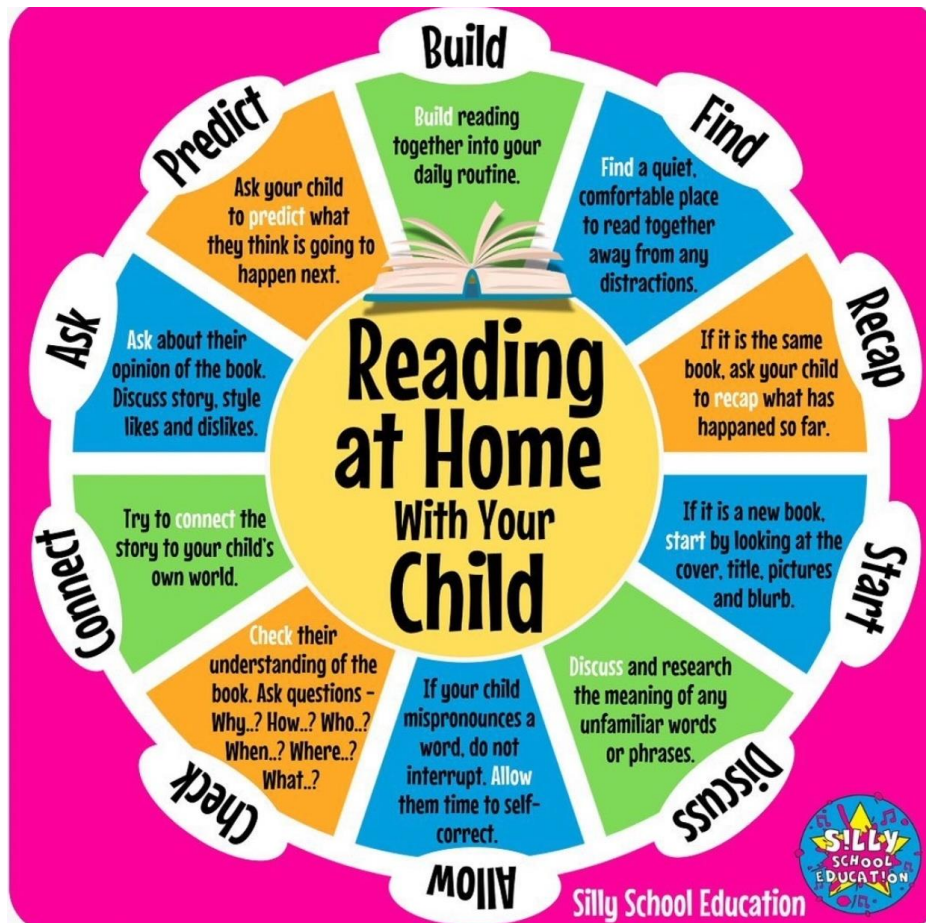


Our peripatetic music provider has some spaces available for guitar, piano or keyboard lessons. If you are interested, please click on the link below.

In the event of high numbers, your child's name will be put on a waiting list.

[https://pz33vs6xga6.typeform.com/to/d0Iv8NTh#school\\_name=Hanslope%20Primary%20School&school\\_id=recWJyqPbLv0mAuyk](https://pz33vs6xga6.typeform.com/to/d0Iv8NTh#school_name=Hanslope%20Primary%20School&school_id=recWJyqPbLv0mAuyk)





## Dates for your calendar

Remember, it is possible to sync the school calendar on our website onto your phone by following this link: <https://www.hanslopeschool.co.uk/calendar-help>

Here is a reminder of the upcoming diary dates for you to plan ahead. Please note that all the dates and times shown here are accurate at the time of publication - alterations to the information listed below may happen due to unforeseen circumstances; if this does occur, we will endeavour to let you know as quickly as possible.

**Friday 17<sup>th</sup> May** – MHST 'Challenging Behaviours' Parent Workshop  
**Monday 20<sup>th</sup> May** – Class Photos (and Year 6 individual photos)  
**Friday 24<sup>th</sup> May** – Term Ends



**Website:** <https://www.hanslopeschool.co.uk/>  
**Contact:** 01908 510245  
**Email:** [ryan.brown@hanslope.milton-keynes.sch.uk](mailto:ryan.brown@hanslope.milton-keynes.sch.uk)