

Community Resilience
Respect Learning Creativity
Integrity Potential

To prepare our children to reach their full potential in a modern, evolving and diverse world.

Summer 1 2024 – Week 6

HANSLOPE PRIMARY SCHOOL HEADTEACHER'S WEEKLY NEWSLETTER

Hanslope School's Summer Fair



Saturday 13th July from 11am-3pm

Hanslope School's
Summer Fair is **BACK**
for 2024!

~

Food, games, stalls and activities will all be happening at the school on Saturday 13th July 2024.

~

We have not been able to have a summer fête in a long time due to the pandemic so this year we will be going all in.

~

We hope to see you and your families there.

Parents, WE NEED YOU! Do you have a business or a side-hustle that you wish to promote? If you, or anyone you know, wishes to run a stall or help out in any way at all, then please contact Hanslope School's PTA on:

pta@hanslope.milton-keynes.sch.uk ASAP! We'd love to hear from you!

We need YOUR HELP!

After the **incredible** amount school council raised for Comic Relief last half-term (over £300!) we would LOVE if we could once again have your support for some donations to school for our **Summer Fair BONANZA** - with the money raised going back into school for resources and equipment.

We were hoping to include a sale of pre-loved **soft toys, other toys and books.**

If you have any of these things going spare, please bring them into school and hand them over to your child's class teacher.



We also would be incredibly grateful for some **donations to the raffle** we will be having on the day of the **Summer Fair**. Do you: run a business that you're happy to donate a voucher for in order to promote it? Have any gifts, like chocolates or bottles of alcohol, you're happy to contribute? We would absolutely love anything you deem to be a worth raffle prize!

Hanslope School's Official Facebook Group

Please join our **Facebook group** where we post about upcoming events. It's the best way to keep posted! To join, scan the QR code, or follow the link below!

<https://www.facebook.com/groups/385370060554710/>

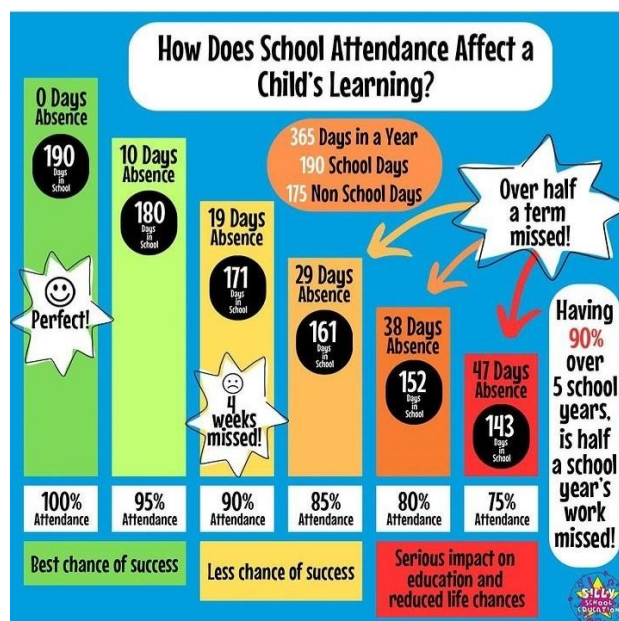


Weekly Attendance Figures

Our whole school attendance target is 95% or more for the end of this academic year. Below is a breakdown of each class's attendance **from last week**. Well done to **Laurel** Class for having the highest attendance rate!

Holly	98.8
Maple	87.5
Larch	95.3
Laurel	100
Alder	91.9
Elm	97.1
Oak	90.8
Rowan	87.2
Cedar	95
Redwood	91.8
Blackthorn	99.2
Hawthorn	98.8
Lime	95.8
Poplar	94.4

School Total 94.5%



Did you know...

If your child finishes the year with **95% attendance** they will still have missed 10 school days, which equates to around **55 hours of learning time?**

In fact, if your child misses just one day in the week it equates to them missing **20%**, with their weekly attendance sitting at just **80%**.

Remember: every day counts!

Totally RAD – Music Service



Our peripatetic music provider has some spaces available for **KS2 children** to have guitar, piano or keyboard lessons. If you are interested, please click on the link below.

In the event of high numbers, your child's name will be put on a waiting list.

https://pz33vs6xga6.typeform.com/to/d0Iv8NTh#school_name=Hanslope%20Primary%20School&school_id=recWJyqPbLvOmAuyk



Rags2Riches is coming up!

WE NEED YOUR HELP TO RAISE MONEY FOR OUR SCHOOL

WE ARE HOSTING A: Clothing Collection with Rags 2 Riches 4 Schools

We have signed up to the Rags2Riches4Schools recycling scheme, to raise money and help others around the world benefit from our good quality unwanted clothes and shoes. We get 50p for every kilo we collect of reusable items towards materials for Hanslope School and would be most grateful if you could help us with this challenge at home.

Do you have clothes in your wardrobe that you no longer wear, maybe last year's fashions, or that buy that was too good to leave but it's not really you after all? Please help us fundraise by donating your good quality unwanted, re-useable (clean, dry and wearable) clothes and accessories.

Your donations become affordable clothing in other countries so please do not send poor quality, dirty or wet items, and no duvets, pillows, curtains, books, CDs or bric-a-brac.

STOP and THINK - is it something you'd wear out and about yourself or pass to a friend? If not, no-one else will want to buy and wear it either, so unfortunately it's not reusable and can't go in the bag.

In addition to raising valuable funds for our school, the house that collects **the most weight** will win **a non-uniform day!** Bag(s) can be returned to the school and **MUST** have the child's name and house name on them so we can keep track of the total number per house.

If you're unable to make a donation this time, then please return the bag so it can be re-used.

Please help us to help others and raise much-needed funds for our school. Thank you for your continuing support.

Bags should be being delivered and distributed soon, but you could get collecting now!



Swimming Sessions for KS2 – after half term

We are excited that school swimming will be starting after half term. Swimming is part of the National Curriculum and we are pleased that KS2 will have the swimming pool at school again this year.

Dates: Tuesday 4th June until Friday 28th June.

All children who are taking part in swimming should have received a letter and timetable explaining how this year's swimming sessions will work. Please ensure that you and your child are aware of their swimming days with regards to kit. If kit is missing on the day, children will not be able to take part.

Many thanks, Miss Goodwin

A plea for materials!

Do you have any old green/blue clothes or material? We would love anything you have going spare in order for us to use for **props for the school play!**

Dates for your calendar

Remember, it is possible to sync the school calendar on our website onto your phone by following this link: <https://www.hanslopeschool.co.uk/calendar-help>


Here is a reminder of the upcoming diary dates for you to plan ahead. Please note that all the dates and times shown here are accurate at the time of publication - alterations to the information listed below may happen due to unforeseen circumstances; if this does occur, we will endeavour to let you know as quickly as possible.

Friday 24th May – Term Ends
Monday 3rd June – INSET Day
Tuesday 4th June – First day of Summer 2



 **Website:** <https://www.hanslopeschool.co.uk/>

 **Contact:** 01908 510245

 **Email:** ryan.brown@hanslope.milton-keynes.sch.uk