




HAREFIELD
Achievement through Active Learning



SIXTH FORM PROSPECTUS

WELCOME

I am delighted to extend a warm welcome to each of you as you consider starting your Sixth form journey at Harefield School. You would be stepping into a nurturing environment designed not only to broaden your academic horizons but also to develop you as individuals who will serve as exemplary role models for the rest of the school.

At Harefield School, we are committed to supporting you academically and offering a comprehensive pastoral care system. We recognise that each student's journey is unique, and we are dedicated to providing the resources and guidance necessary for your success.

Furthermore, we understand the importance of your personal development. That is why we have implemented a tailored personal development curriculum and coaching programme. This initiative aims to equip you with the essential skills required to maximise your academic performance, along with preparing you for your future pathways, be it through apprenticeships, university, or direct employment.

Your time in sixth form will be transformative, and our dedicated staff are here to assist you every step of the way. We encourage you to embrace this opportunity, engage fully with the learning experiences on offer, and take an active role in your development.

We look forward to welcoming you to Harefield School.





Contents

- 1 Our Values
- 2 The School Day
- 3 School Uniform
- 4 Equipment & Learning Expectations
- 5 Attendance
- 6 Tutor time
- 7 Student Leadership
- 8 Bursary
- 9 Safeguarding and wellbeing
- 10 Post Sixteen Courses





OUR VALUES



Aspiration

We encourage every member of our school community to aim high, set ambitious goals, and pursue their dreams with determination and resilience.



Honesty

We promote a culture of integrity, where truthfulness and transparency are at the heart of all we do, building trust and strong character in our students.



Responsibility

We empower our students to take ownership of their actions and learning, instilling a sense of accountability that prepares them to be conscientious and active members of society.



Compassion

At Harefield, we nurture empathy and kindness, encouraging our students to support one another and contribute positively to the world around them.



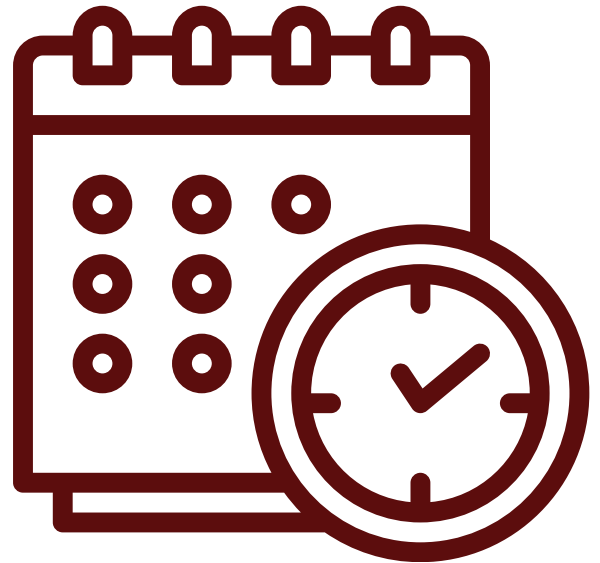
Respect

We cultivate a culture of mutual respect, where every voice is valued, and differences are celebrated, fostering a community of kindness and understanding.



THE SCHOOL DAY

- 8.00am** School opens for free breakfast
- 8.30am** Tutor Time (all students must be on site)
- 9.00am** Lesson 1
- 10.00am** Lesson 2
- 11.00am** Break 1
- 11.30am** Lesson 3
- 12.30pm** Lesson 4
- 1.30pm** Break 2
- 2.00pm** Lesson 5
- 3.00pm** Lesson 6 / Extra Curricular



All students are expected to arrive promptly each morning to ensure a smooth and successful start to the day. From 8:00 a.m., free bagels and spreads are available to all students, providing a nutritious start before lessons begin.

Tutor time is a structured session helps set a positive tone for learning and provides a consistent personal development curriculum for every student.

Students enjoy two breaks during the school day, with hot food available at both. These breaks offer the chance to refuel, relax, and take part in activities such as indoor basketball, outdoor football, or simply socialising with friends.

A range of after-school clubs are available for younger students, and we actively encourage Sixth Formers to get involved in supporting these activities — an excellent opportunity to develop leadership and mentoring skills.

Sixth Form students who consistently meet expectations for punctuality and attendance are granted the privilege of leaving school at lunchtime if they have no timetabled lessons in the afternoon.



DRESS CODE

The intention of the Sixth Form dress code is to dress as if they were working in a smart office environment

- Shirt with collar
- Blouse, Shirt or Smart Formal top
- Tailored trousers
- Skirt or dress (minimum knee length)
- Smart leather or leather effect shoes
- Suit or smart jacket (optional)
- Jumper or cardigan (optional)



WEALDSTONE TRAINING KIT

Wealdstone Academy trainees must wear Wealdstone branded training kit on non training and match days or change back into smart-wear.



Wealdstone Academy branded training kit is available at the Wealdstone Club shop.

<https://wealdstonefcstore.co.uk/collections/academy>

**Academy training Tee Top
Academy training Polo
Academy Zip jacket**

EQUIPMENT & LEARNING EXPECTATIONS

At Harefield, we want every student to make the most of their learning experience. Being ready to learn means coming to school each day prepared, engaged, and demonstrating the values that make our community strong: Respect, Responsibility, and Aspiration.

Essential Items



Equipment

To succeed in lessons, you must bring the right equipment every day. This includes our Essential Items List shown here. You will each have a locker in the Sixth Form room to store your equipment. *(Mini whiteboards, whiteboard pen and whiteboard eraser will be provided by the school).*

Computers

All students will have access to a computer in the Sixth form room. You may bring in your own laptop if you would prefer.

Additional items



Punctuality & Attendance

Being on time is a key part of responsibility. You should:

- Arrive at school by 8.25am and be in the Sixth Form room promptly for 8.30am
- Move quickly between lessons and arrive on time, ready to learn

Engaging with Learning

Learning is an active process, and we expect all students to:

- Ask questions – If you do not understand something, ask. Curiosity is key to success.
- Take part in discussions – Share your ideas and listen to others respectfully.
- Complete all classwork and homework – Show effort in everything you do.
- Take responsibility for your progress – Set goals and work hard to achieve them.
- Use your private study sessions to help consolidate learning.

Showing Our Values

At Harefield, we are proud of our core values:

- Respect – Listen when others speak, be kind, and follow classroom rules.
- Responsibility – Take care of your belongings, follow school expectations, and take pride in your work.
- Aspiration – Always do your best and challenge yourself to improve every day.

By following these expectations, you will make fantastic progress and enjoy a successful journey at Harefield.

ATTENDANCE

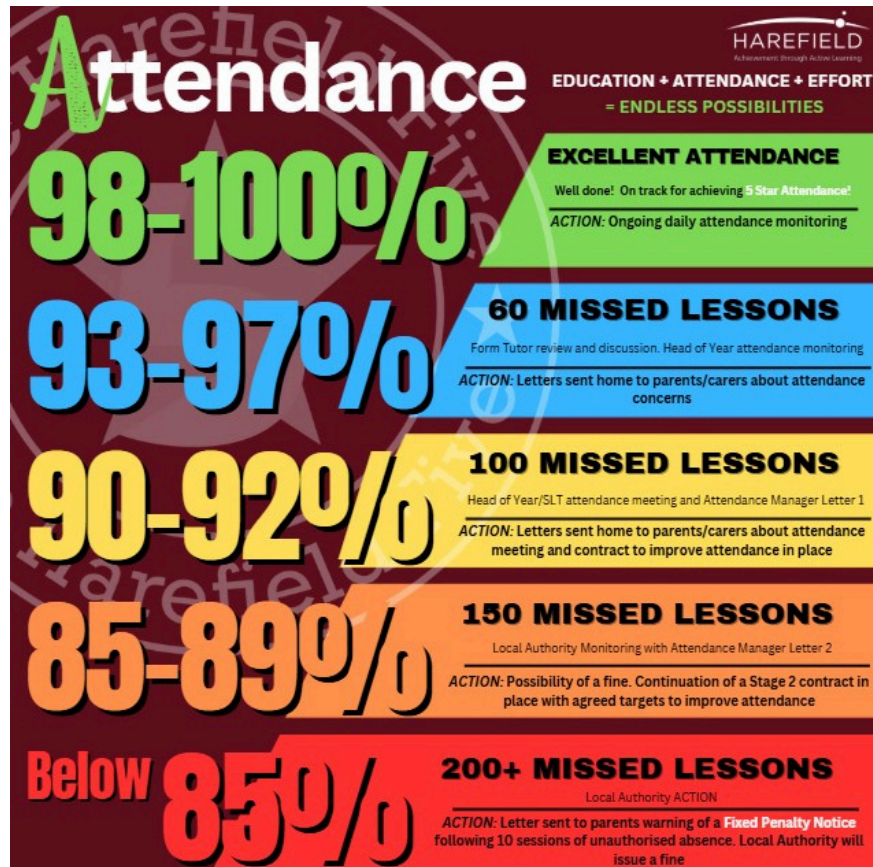
Punctuality & Late Arrivals

Students must arrive on time for the start of the school day at 8.30am. If a student is late past 9.00am, this will count as morning absence according to DfE rules.

Leaving School Early

Students may only leave early if the school has received prior written consent from a parent or guardian, along with a qualifying reason for the early departure.

Do not book driving lessons or arrange part time work during school hours and try to arrange medical appointments after school.



Once you have decided to enrol in Sixth Form attendance is compulsory, this includes tutor time, lessons and enrichment activities. Attendance will be monitored with parental phone calls made followed by parental meetings if improvements are not made.

Regular attendance helps students stay on track with their studies, build positive relationships with peers and teachers, and develop essential habits for university and the workplace.

Employment Prospects:

Employers value punctuality and consistent attendance, making it easier to secure jobs and apprenticeships.

University Applications:

Strong attendance records are often highlighted in references, demonstrating reliability and commitment to potential universities.

TUTOR TIME

The Tutor Time Programme

Our Post-16 Tutor Time Programme provides every student with a structured and consistent personal development curriculum, delivered by their dedicated tutor. This daily session supports academic progress, wellbeing, and preparation for life beyond school, ensuring students are fully equipped for future success.

Monday	1 - 1 with tutor / folder check
Tuesday	VESPA Coaching
Wednesday	Assembly
Thursday	Numeracy & Literacy support
Friday	Getting The Grades Tutorial Scheme



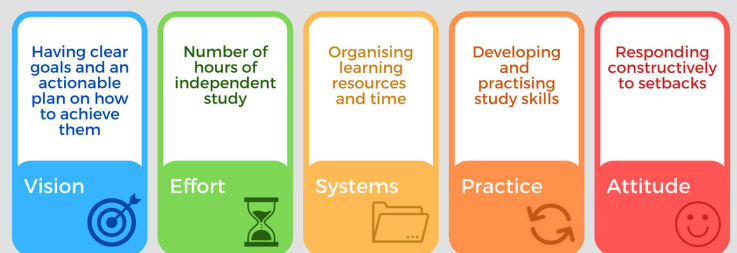
40+ Videos:

- ▶ Developing the skills, behaviours and mindset for academic success
- ▶ Featuring GCSE students sharing their unscripted, authentic advice

Video tutorial scheme to help students develop the skills, mindset and behaviour to perform in their Sixth journey.

VESPA is a research-driven framework that develops the essential non-cognitive skills every student needs for academic success.

The VESPA Model



UCAS Support

Our dedicated UCAS support programme ensures every student receives personalised guidance throughout the university application process. From choosing the right courses and writing compelling personal statements to preparing for interviews, students benefit from expert advice and one-to-one mentoring. Regular workshops and enrichment activities help students make informed decisions about their future pathways, whether progressing to university, apprenticeships, or employment.

UCAS

STUDENT LEADERSHIP



Sixth Form Leadership

Students are encouraged to apply for a place on the Sixth Form Leadership Team, where they can take an active role in shaping the life of the school. Two students are selected each year to serve as Head Students, representing the Sixth Form and wider school community at key events and providing a student voice in school leadership. These prestigious roles offer valuable opportunities to develop confidence, responsibility, and leadership skills that enhance future university and career applications.

The Harefield School community

Our Sixth Form students play a vital role in the life of The Harefield School, acting as ambassadors and role models within the wider school community. They represent the school at key events and provide valuable support to younger students in lessons and through reading initiatives. This active engagement helps develop leadership, communication, and teamwork skills, while also strengthening students' CVs and UCAS applications through meaningful, real-world experience.

The Local Community

Our Student Leaders are encouraged to build strong and positive links with the local community through volunteering and charitable initiatives. By taking part in community projects and supporting local causes, students develop a strong sense of social responsibility and civic pride, while gaining valuable experiences that enrich their personal development and future applications.



SIXTH FORM BURSARY

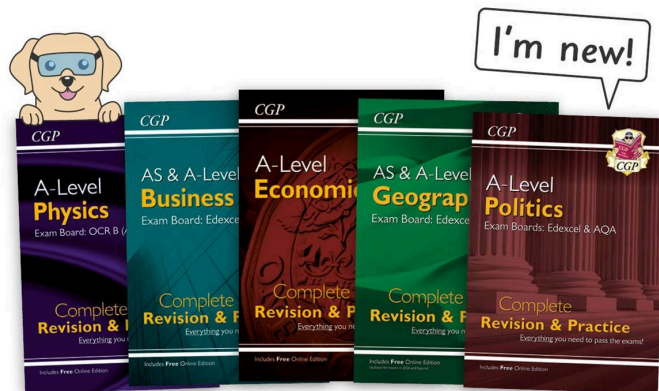
Sixth Form Bursary

You may be eligible to apply for the Sixth Form Bursary Fund, which provides financial support to help students continue their Post-16 education. The bursary is designed to assist those who meet the school's eligibility criteria.

Funding can be used to help with essential costs such as:

- Books and stationery
- Course materials
- Travel expenses
- Wealdstone-branded training kit

Further information, including eligibility details and how to apply, is available on the Sixth Form section of the school website or by contacting Mr Regan.



SAFEGUARDING & WELLBEING

The safety and wellbeing of our students are our top priorities at Harefield School. We have a robust safeguarding framework in place to protect students from harm, both in school and online. Every student also has a nominated Trusted Adult, someone they can turn to for support, advice, or guidance whenever needed.

How We Keep Students Safe

- **Safeguarding Team** – Our dedicated safeguarding team is always available to support students facing any concerns about their safety.
- **Staff Training** – All staff receive regular safeguarding training to ensure they can identify and respond to concerns appropriately.
- **Pastoral Support** – Our pastoral team works closely with students, offering guidance and emotional support to help them navigate challenges.
- **Trusted Adults** – Every student has a nominated Trusted Adult in school—someone they can approach for help, whether for academic concerns, wellbeing, or personal issues.
- **Counselling Team** – We have a dedicated counselling team available to support students with their mental health and emotional wellbeing, providing a safe space to talk and seek help when needed.

See It, Hear It, Report It

We encourage all students to play an active role in safeguarding. If you see or hear something that doesn't seem right, report it. Students can use our confidential online reporting system via the Report Button on our website or speak directly to a member of staff.

Online Safety Awareness

The internet is a powerful tool, but it also comes with risks. We educate our students on responsible online behaviour through:

- PSHE and Computing Lessons – Covering topics such as cyberbullying, privacy settings, and digital resilience.
- Parental Guidance & Resources – Providing advice for parents on how to keep their children safe online.

HAREFIELD SCHOOL
NORTHWOOD WAY, HAREFIELD,
UXBRIDGE, MIDDLESEX,
UB9 6ET
WWW.HFSCHOOL.ORG.UK
EMAIL: INFO@HFSCHOOL.ORG.UK
TEL: 01895 822 108

If you have a concern...

Speak to your Trusted Adult

SEE IT

HEAR IT

REPORT IT

or report on our website

Our Safeguarding Team

F AHMED	R BOOKER	K RAPER	T WHITE
DSL	DSL	Student Manager	Student Manager
R BOURNE	G FELLOWS	S RILEY	S FISH
HoY	HoY	Headteacher	AHT - Behaviour

SEE IT
HEAR IT
REPORT IT

Staying Safe

HAREFIELD
Achievement through Active Learning

COURSES

A Level Courses and Entry Requirements

Harefield Sixth Form offers a broad and engaging range of A Level courses, allowing students to pursue subjects that match their interests, ambitions, and future career goals. We recommend that students study three A Level subjects.

To enrol on any A Level course, students must meet the required GCSE entry grades. Conditional offers for Sixth Form places will be confirmed upon receipt of GCSE results in August 2026.

Students wishing to follow a Level 3 programme of study at The Harefield School must achieve a minimum of five GCSEs at grade 4 (or equivalent) or above, including English and Mathematics.

Course	Entry Requirements
Biology A Level	Grade 6 or above in GCSE Science & Maths
Business Studies A Level	Grade 6 or above in GCSE in Business or GCSE English & Maths at grade 6.
Chemistry A Level	Grade 6 or above in GCSE Science & Maths
English Literature A Level	Grade 6 or above in English Literature and English Language
Geography A level	Grade 6 or above in GCSE Geography
History A level	Grade 6 or above in History and English
Maths A level	Grade 7 or above in Maths GCSE
Media A level	Grade 5 or above in English and 6 or above in Media (if taken)
Physics A level	Grade 6 or above in GCSE Science & Maths
Sociology A level	Grade 5 and above In English
Vocational courses: BTEC L3	
Health and Social Care	5 x GCSE passes at Grade 4 including English & Maths
Sport & Fitness	5 x GCSE passes at Grade 4 including English & Maths

BIOLOGY A LEVEL

Exam Board: AQA

Studying A Level Biology AQA provides students with a comprehensive understanding of the complexities of living organisms and their interactions within ecosystems. The course content is meticulously designed to cover a wide range of topics including cellular biology, biochemistry, genetics, and ecology. Students will engage with both theoretical principles and practical experiments, equipping them with valuable laboratory skills and a critical understanding of scientific methodology. This blend of knowledge and hands-on experience not only fosters intellectual curiosity but also instil a sense of responsibility towards the environment and public health.

Course Outline

1. Biological molecules: Students will study the structure and properties of carbohydrates, proteins, lipids, and nucleic acids, alongside their roles in biological processes.
2. Cells: This segment encompasses the study of prokaryotic and eukaryotic cells, cellular organisation and division processes including mitosis and meiosis.
3. Organisms exchange substances with their environment: This theme delves into transport mechanisms in plants and animals, focusing on concepts such as gas exchange, circulatory systems, and the role of nutrients.
4. Genetic information, variation and relationships between organisms: Here, topics include DNA structure, gene expression, genetic variation, and the principles of inheritance as well as the importance of biodiversity and evolutionary processes.
5. Energy transfers in and between organisms: Students will investigate metabolic pathways, energy production, and the relationships between different trophic levels in ecosystems.
6. Organisms responding to changes in their internal and external environments: This section focuses on homeostasis, hormonal coordination, and neural responses.

Assessment

Paper 1 - topics 1- 4 Written exam worth 35% of A Level

Paper 2 - topics 5 - 8 Written exam worth 35% of A Level

Paper 3 - topics 1-8 Written exam worth 30% of A Level

Links to future pathways

A Level Biology serves as a stepping stone for various career paths. The skills acquired through this qualification are highly transferable and sought after in numerous fields. For instance, students aspiring to enter the medical profession will find that a strong foundation in biology is essential for further studies in medicine, dentistry, and veterinary science. Furthermore, careers in biotechnology, environmental conservation, and research increasingly require a deep understanding of biological concepts.

BUSINESS A LEVEL

Exam Board: AQA

Studying AQA A Level Business offers a comprehensive insight into the world of commerce. The curriculum is designed to equip students with essential knowledge and skills that are highly regarded in both higher education and the job market. The course encompasses a wide range of topics including business ideas, marketing strategies, financial planning, and operational management, providing students with an understanding of the key functions that underpin successful businesses.

The content of the AQA A Level Business specification encourages critical thinking and the application of theoretical concepts to real-world scenarios. Students engage with case studies and business simulations, which promote analytical skills necessary for problem-solving and strategic decision-making. This foundational knowledge is complemented by the exploration of contemporary business issues, ensuring that learners are well-prepared to tackle challenges faced by enterprises today.

Course Outline

Year 1 Content

- What is business?
- Managers, leadership and decision making
- Decision making to improve marketing performance
- Decision making to improve financial performance
- Decision making to improve human resource performance.

Year 2 Content:

- Analysis strategic position of a business
- Choosing strategic direction
- Strategic methods: how to pursue strategies
- Managing strategic change

Assessment

Paper 1

- Written exam: 2 hours 100 marks in total
- 33.3% of A-level

Three compulsory sections:

- Section A has 15 multiple choice questions (MCQs) worth 15 marks.
- Section B has short answer questions worth 35 marks.
- Sections C and D have two essay questions (choice of one from two and one from two) worth 25 marks each

Paper 2

- Written exam: 2 hours 100 marks in total
- 33.3% of A-level
- Three data response compulsory questions worth approximately 33 marks each and made up of three or four part questions.

Paper 3

- Written exam: 2 hours 100 marks in total 33.3% of A-level
- One compulsory case study followed by approximately six questions

Links to future pathways

Pursuing A Level Business can open a plethora of career opportunities. Graduates can enter diverse fields such as marketing, finance, human resources, and entrepreneurship, among others. The qualification is highly respected by universities and employers, as it demonstrates a student's capability to manage, lead, and innovate within a business context. Moreover, those who aspire to pursue higher education in business-related degrees will find that A Level Business provides a solid grounding for further study and research.

CHEMISTRY A LEVEL

Exam Board: AQA

Studying AQA A Level Chemistry offers students a rich and rigorous intellectual experience that is fundamental for those pursuing further education and careers in science-related fields. The course is meticulously designed to develop not only subject-specific knowledge but also critical thinking and analytical skills, which are invaluable in today's competitive job market.

The AQA A Level Chemistry syllabus encompasses a comprehensive range of topics, from the fundamental principles of chemical reactions to advanced concepts such as organic chemistry and thermodynamics. This breadth of content ensures that students gain a thorough understanding of both theoretical frameworks and practical applications. Practical laboratory skills are emphasised throughout the course, with various investigations and experiments enabling students to engage in hands-on learning. Such experience fosters a deeper appreciation of scientific inquiry and enhances problem-solving abilities.

Course Outline

- **Physical Chemistry:** This section covers fundamental concepts such as atomic structure, the mole concept, and chemical bonding. Students will explore thermodynamics, kinetics, and equilibria, with a particular focus on the interpretation and manipulation of chemical equations.
- **Inorganic Chemistry:** Students will investigate the periodic table and trends in chemical behaviour, delving into the properties and reactions of various groups, particularly the alkali metals, halogens, and transition metals. The course encourages understanding the significance of different types of bonding and the role of electrons in determining chemical reactivity.
- **Organic Chemistry:** This segment encompasses the study of organic compounds, their functional groups, and various reaction mechanisms. Students will learn to identify, synthesise, and analyse organic substances, healthily engaging in practical applications and implications of organic chemistry in real-world contexts.
- **Practical Skills:** The A Level Chemistry course incorporates a significant practical component, enabling students to gain hands-on experience in laboratory techniques and methodologies. Assessments will include practical skills, as well as the ability to critically evaluate data and results.
- **Contextualised Learning:** Throughout the course, students will appreciate the societal and environmental impact of chemistry. This includes discussions on sustainability, ethical considerations related to chemical production and consumption, and the role of chemistry in addressing global challenges.

Assessment

- Paper 1 - 2 hour written exam worth 35% of A Level
- Paper 2 - 2 hour written exam worth 35% of A Level
- Paper 3 - 2 hour written exam worth 30% of A Level

Links to future pathways

The study of chemistry opens doors to a multitude of career pathways. Graduates of A Level Chemistry often pursue further education in fields such as medicine, pharmacology, engineering, environmental science, and biotechnology. The analytical and methodical skills developed through the study of chemistry are highly sought after in industries including healthcare, research, and academia. In an age where sustainable practices are increasingly prioritised, chemists play a crucial role in developing innovative solutions to global challenges, such as climate change and resource management.

ENGLISH LITERATURE A LEVEL

Exam Board: OCR

Studying OCR English Literature at A Level offers an invaluable opportunity for students to engage deeply with a range of texts, enhancing their critical thinking and analytical skills. The curriculum encompasses a diverse selection of literature, including classic and contemporary works from British and international authors. This breadth of content not only fosters a profound appreciation for literary art forms but also encourages students to explore themes such as identity, society, and morality.

The course demands rigorous engagement with the texts, promoting skills in interpretation, argumentation, and written communication. Students will analyse various genres, forms, and techniques, enhancing their ability to articulate their thoughts coherently and persuasively. Through the study of plays, poetry, and prose, learners develop a nuanced understanding of context and the significant impact of historical and cultural movements on literature.

Course Outline

Component 1- students will study a Shakespeare play, a drama text from pre 1900 and well as a collection of poetry from pre 1900. Across the exam, students are required to; explore contrasts, connections and comparisons between their chosen literary texts; explore ways in which texts relate to each other and to literary traditions, movements and genres; understand the significance of cultural and contextual influences on readers and writers and identify and consider how attitudes and values are expressed in their chosen texts.

Component 2- students will study two texts from The Gothic genre. Across the exam, students are required to: explore contrasts, connections and comparisons between different literary texts within the context of a specific topic area; explore ways in which texts relate to one another and to literary traditions, movements and genres; explore ways in which texts are interpreted by different readers, including over time and use literary critical concepts and terminology with understanding and discrimination.

Component 3- coursework. Here, we encourage individual study, interest and enjoyment of modern literature and for learners to develop; an appreciation of how writers shape meanings in texts through use of language, imagery, form and structure; an understanding of texts informed by an appreciation of different interpretations and an ability to explore connections across texts, such as stylistic, thematic or contextual.

Assessment

- Exam 1- Drama and Poetry pre- 1900. 60 marks. 40%
- Exam 2- Comparative and contextual study. 60 marks. 40%
- Coursework- Close reading, creative writing and a comparative essay. 40 marks. 20%

Links to future pathways

A Level English Literature is highly regarded by universities and employers alike. The critical skills developed during the course are transferable to a multitude of professions, including education, law, journalism, marketing, and public relations. Graduates often find themselves well-prepared for a range of degree courses, as the ability to analyse and evaluate complex texts is paramount in higher education.

GEOGRAPHY A LEVEL

Exam Board: Edexcel

Studying Edexcel Geography A Level offers students a unique opportunity to explore the intricate interactions between people, places, and the environment. This qualification not only provides an in-depth understanding of geographical concepts but also equips learners with essential skills that are highly sought after in various career paths.

The Edexcel Geography A Level curriculum engages students with contemporary issues, including climate change, urbanisation, and globalisation. By examining these key themes, students develop a critical understanding of the world, fostering an awareness of their role as informed global citizens. The course encourages the application of geographical knowledge through fieldwork, enabling students to gather, analyse, and interpret data in real-world contexts. This hands-on experience enhances their understanding of theoretical concepts while developing practical skills.

Course Outline

Component 1 students will engage with a variety of physical geography topics, including the study of tectonic processes, coastal systems, and natural hazards. This segment aims to foster an understanding of the processes shaping the planet's surface and their implications for human activity.

Component 2 focuses on human geography, exploring themes such as globalisation, urbanisation, and development. Students will critically analyse the impacts of these phenomena on societies, economies, and environments, considering both local and global perspectives.

Component 3 emphasises geographical skills and investigative techniques, equipping students to conduct fieldwork and data analysis. Practical skills developed during this component are essential for informed decision-making and for understanding geographical materials, including maps, graphs, and geospatial technologies.

Finally, the course culminates in a substantial independent investigation where students select a geographical question or hypothesis. This project encourages students to apply their knowledge, hone their research skills, and engage in critical analysis, culminating in a written report.

Assessment

- Paper 1- Physical Geography, exam 135 minutes, 30% of overall mark
- Paper 2- Human Geography, exam 135 minutes, 30% of overall mark
- Paper 3- Synoptic unit, exam 135 minutes, 20% of overall mark.
- Paper 4 - coursework, internal assessed, externally moderated. 20 % of overall mark.

Links to future pathways

Pursuing A Level Geography opens up a multitude of career opportunities. Graduates often find themselves in diverse fields such as urban planning, environmental consultancy, and international development. The skills acquired through the study of geography—such as analytical thinking, problem-solving, and effective communication—are transferable and valued in many professions. Furthermore, geography graduates are well-prepared for roles in teaching, research, and policy-making, contributing meaningfully to society and addressing some of its most pressing challenges.

HISTORY A LEVEL

Exam Board: AQA

Studying A Level AQA History offers students a profound opportunity to engage with the past, fostering critical thinking skills and a nuanced understanding of contemporary society. This course enables learners to explore significant historical events and themes, cultivating their ability to analyse complex information and develop reasoned arguments.

The curriculum, which covers diverse periods, encourages students to ask critical questions about causation, change, and consequence. Through the examination of primary and secondary sources, students will not only enhance their research skills but also gain a deeper appreciation for the multifaceted nature of historical narratives.

Course Outline

- Component 1 - Breadth Study Tsarist and Communist Russia 1855 - 1964
- Component 2 - Religious conflict and the Church in England, c1529–c1570
- Component 3 - Historical Investigation - a personal study over 100 years

Assessment

Component 1 - Breadth Study Tsarist and Communist Russia 1855 - 1964

The study of significant historical developments over a period of around 100 years and associated interpretations.

- Written exam: 2 hours 30 minutes
- 80 marks
- 40% of A-level

Component 2 - Religious conflict and the Church in England, c1529–c1570

The study in depth of a period of major historical change or development and associated primary evidence

- Written exam: 2 hours 30 minutes
- 80 marks
- 40% of A-level

Component 3 - Historical Investigation - a personal study over 100 years

A personal study based on a topic of the student's choice. This should take the form of a question in the context of approximately 100 years. It must not duplicate the content of options chosen for Components 1 and 2.

- 3500–4500 words
- 40 marks
- 20% of A-level

Links to future pathways

An A Level in History equips students with transferable skills highly valued across various professions. Graduates often pursue careers in education, law, public policy, journalism, and heritage management. The analytical skills developed through historical study are crucial for problem-solving and assessment in the workplace, making history graduates appealing to potential employers.

Furthermore, the ability to appreciate different perspectives and cultural contexts is increasingly important in today's global society. Studying history fosters empathy and ethical reasoning, qualities that are essential in roles that require teamwork and communication.

MATHEMATICS A LEVEL

Exam Board: Pearson Edexcel

Studying this subject offers you the unique opportunity to develop critical thinking skills, problem-solving abilities, and a deep understanding of concepts that shape the world around us. Whether you're passionate about exploring how things work, analysing data, or solving complex problems, this subject will equip you with the tools and knowledge needed for success in a wide range of careers.

It encourages innovation, creativity, and a logical approach to real-world challenges, giving you a competitive edge in today's rapidly evolving job market.

By studying this subject, you're not just gaining information—you're building a foundation for a fulfilling and impactful future.

Course Outline

1. Pure Mathematics (66.7% of the course)

2. Applied Mathematics:

A. Statistics (16.7%)

B. Mechanics (16.7%)

Assessment

- Paper 1: Pure Mathematics 1 (2 hours, 33.3%)
 - Topics: Pure mathematics content from the course.
- Paper 2: Pure Mathematics 2 (2 hours, 33.3%)
 - Topics: Additional pure mathematics content.
- Paper 3: Statistics and Mechanics (2 hours, 33.3%)
 - Section A: Statistics.
 - Section B: Mechanics.

Links to future pathways

One of the primary reasons to study A Level Edexcel Maths is the versatility it offers in terms of career opportunities. Mathematics forms the backbone of numerous professions, including engineering, finance, medicine, and technology. Graduates with a strong mathematical background are in high demand, as industries increasingly rely on data analysis and quantitative skills to drive decision-making processes.

Pursuing mathematics at A Level can lead to further education in fields such as physics, economics, and computer science, thereby expanding one's career options significantly.

MEDIA A LEVEL

Exam Board: Pearson Educas

A Level Media Studies, particularly through the Educas examination board, provides students with an in-depth understanding of the media's role in society and its influence on contemporary culture. This qualification equips learners with essential analytical skills, enabling them to critically evaluate various media forms, including television, film, digital media, and print.

The curriculum encompasses a broad range of topics, including media language, representation, audience engagement, and industry practices. Students engage with theoretical frameworks, allowing them to understand the complexities of media ownership, regulation, and the impact of technological advancements. Practical components of the course enable learners to create their own media products, fostering creativity and technical skills. This combination of theoretical knowledge and practical experience nurtures a comprehensive understanding of the media landscape.

Course Outline

Component 1: investigating the Media

- You will analyse media language and explore representations in the media, using relevant theories and consider representations. You will also develop knowledge and understanding of key aspects of media industries and study media audiences, considering aspects such as how they are targeted and how they respond to media texts.

Component 2: Media Forms and Productions in Depth

- This section allows you to explore tasks in more detail with comparative analysis. The areas you will study are Television in the Global Age, Magazines- Mainstream and Alternative Media and Media in the Online Age.

Component 3: Cross- Media Production

- Using industry standard software, you will create an individual cross- media production using traditional and digital forms

Assessment

- 30% coursework (60 marks)
- 35% exam 1 (90 marks)
- 35% exam 2 (90 marks)

Links to future pathways

Pursuing A Level Media Studies opens a myriad of career pathways. Graduates often find themselves equipped to enter the dynamic fields of film, television, journalism, advertising, public relations, and digital marketing. The critical thinking and analytical skills developed throughout the course are highly valued in the media industry, where the ability to assess content critically and create engaging narratives is paramount.

PHYSICS A LEVEL

Exam Board: AQA

Whether as a stepping stone to a numerate degree, engineering or just because of a fascination with the world and how it works, this subject will challenge your logical, practical and numerical skills. Covering the unfolding story of the Universe and how it works, taking you on a journey of discovery from the outer edge of space to the depths of sub-atomic particles, the course also provides students with a solid grounding in everyday physics.

Course Outline

Core Sections:

1. Measurements and their errors
2. Particles and Radiation
3. Waves
4. Mechanics and Materials
5. Electricity
6. Further Mechanics and Thermal Physics 7
Fields and their consequences
- 8 Nuclear Physics

Assessment

- Paper 1: Sections 1-5 and 6.1 (e.g., mechanics, electricity, waves). 2 hours, 85 marks, 34% of A-level.
- Paper 2: Sections 6.2-8 (e.g., thermal physics, fields, nuclear physics), assuming knowledge from Paper 1. 2 hours, 85 marks, 34% of A-level.
- Paper 3: Practical skills and data analysis (Section A) and one optional topic (e.g., astrophysics, medical physics) (Section B). 2 hours, 80 marks, 32% of A-level.

Links to future pathways

Future pathways for physics graduates are diverse, spanning engineering, science, technology, IT, and research, often requiring a degree in physics or a related scientific field.

SOCIOLOGY A LEVEL

Exam Board: OCR

Studying Sociology A Level with the OCR (Oxford, Cambridge and RSA) examination board offers students an insightful and comprehensive understanding of society and its intricate dynamics. This subject equips learners with the analytical skills required to explore various social structures, cultural norms, and collective behaviours, fostering a critical perspective on the world we inhabit.

The curriculum encompasses a wide range of topics, including socialisation, identity, social stratification and the impact of social institutions such as family, education, and media. These themes not only enhance academic knowledge but also promote the development of key skills such as critical thinking, research, and communication. Students are encouraged to engage with contemporary societal issues, thus relating theoretical concepts to real-world applications.

Course Outline

- H580/01 Socialisation, Culture and Identity
- H580/02 Researching and Understanding Social Inequalities
- H580/03 Debates in Contemporary Society

Assessment

100% examination at end of Year 2

Paper 1: Socialisation, culture and identity

Paper 2: Researching and understanding social inequalities

Paper 3: Debates in contemporary society

Links to future pathways

Graduates with Sociology qualifications often pursue careers in social work, education, public policy, and community development. Additionally, fields such as criminology, health and social care, and market research also highly value the insights gained from sociological studies. The skills acquired through the examination of societal trends and behaviours allow for a nuanced understanding of human interaction, making Sociology graduates attractive to potential employers.

BTEC HEALTH AND SOCIAL CARE LEVEL 3

Exam Board: Pearsons BTEC

Pursuing a Level Three BTEC in Health and Social Care offers students a comprehensive understanding of the complexities of health and social care systems. The course content encompasses vital areas such as human development, safeguarding, and effective communication in care settings, equipping learners with the essential skills and knowledge to excel in this vital sector.

Moreover, the programme provides practical experiences and a context for theoretical application, fostering both personal and professional growth.

Course Outline

- Human Lifespan Development: This looks at growth and development through the different stages of life and considers the factors that can affect them along with the effects of ageing.
- Working in Health and Social Care: this considers the different types of care available for people
- Meeting Individual Care and Support Needs, which looks at the principles and practicalities that underpin individual care.
- The fourth unit can be chosen from units which study Sociological, psychological or physiological care needs.
- Work experience will be included.

Assessment

- Human Lifespan - 1 x 90 minute exam
- Working in Health and Social Care 1x 90 minute exam.
- Meeting Individual Needs- Internally assessed, written report on care of individuals.
- Chosen fourth unit- Internally assessed coursework.

Links to future pathways

Students are well-prepared for a variety of career paths, including roles as social workers, healthcare assistants, or nursing professionals. Furthermore, the qualification serves as a robust foundation for further academic pursuits, such as university degrees in nursing, social work, or public health. Consequently, the Level Three BTEC in Health and Social Care is an excellent choice for those aspiring to make a meaningful impact in the health and social care landscape.

BTEC SPORT LEVEL 3

Exam Board: Pearsons BTEC

Studying BTEC Sport Level 3 Pearson offers a comprehensive and engaging approach to understanding the multifaceted world of sports. This qualification is ideal for students who are passionate about sport and seek to develop both theoretical knowledge and practical skills applicable to various careers within the industry.

Pursuing this course cultivates essential competencies in areas such as sports coaching, exercise science, and sports management, thereby equipping students for a plethora of occupational pathways.

Course Outline

- BTEC Level 3 National Extended Diploma in Sport - equivalent to 3 A levels
- BTEC Extended certificate - equivalent to 2 A levels
- BTEC Diploma - equivalent to 1 A Level

Assessment

Assessment is specifically designed to fit the purpose and objective of the qualifications. It includes a range of assessment types and styles suited to vocational qualifications in the sector. For these qualifications, learners will be assessed via recorded practical delivery, presentations as well as written assessments. Most units in the sector are internally assessed and subject to external standards verification.

Students will also be required to sit externally marked examinations which are compulsory units.

Links to future pathways

The BTEC Sport qualification is recognised by a wide range of universities and employers, making it an excellent stepping stone for those aspiring to excel in the competitive field of sports. By choosing BTEC Sport Level 3, students lay a solid foundation for a rewarding career in the sporting sector. Graduates can consider roles in personal training, sports development, and fitness instruction, or even advance to higher education, potentially specialising in areas like sports therapy and health promotion.

Please use the QR code below to apply for Harefield School Sixth form.



HAREFIELD SCHOOL
NORTHWOOD WAY, HAREFIELD,
UXBRIDGE, MIDDLESEX,
UB9 6ET
WWW.HFSCHOOL.ORG.UK
EMAIL: INFO@HFSCHOOL.ORG.UK
TEL: 01895 822 108

SIXTH FORM

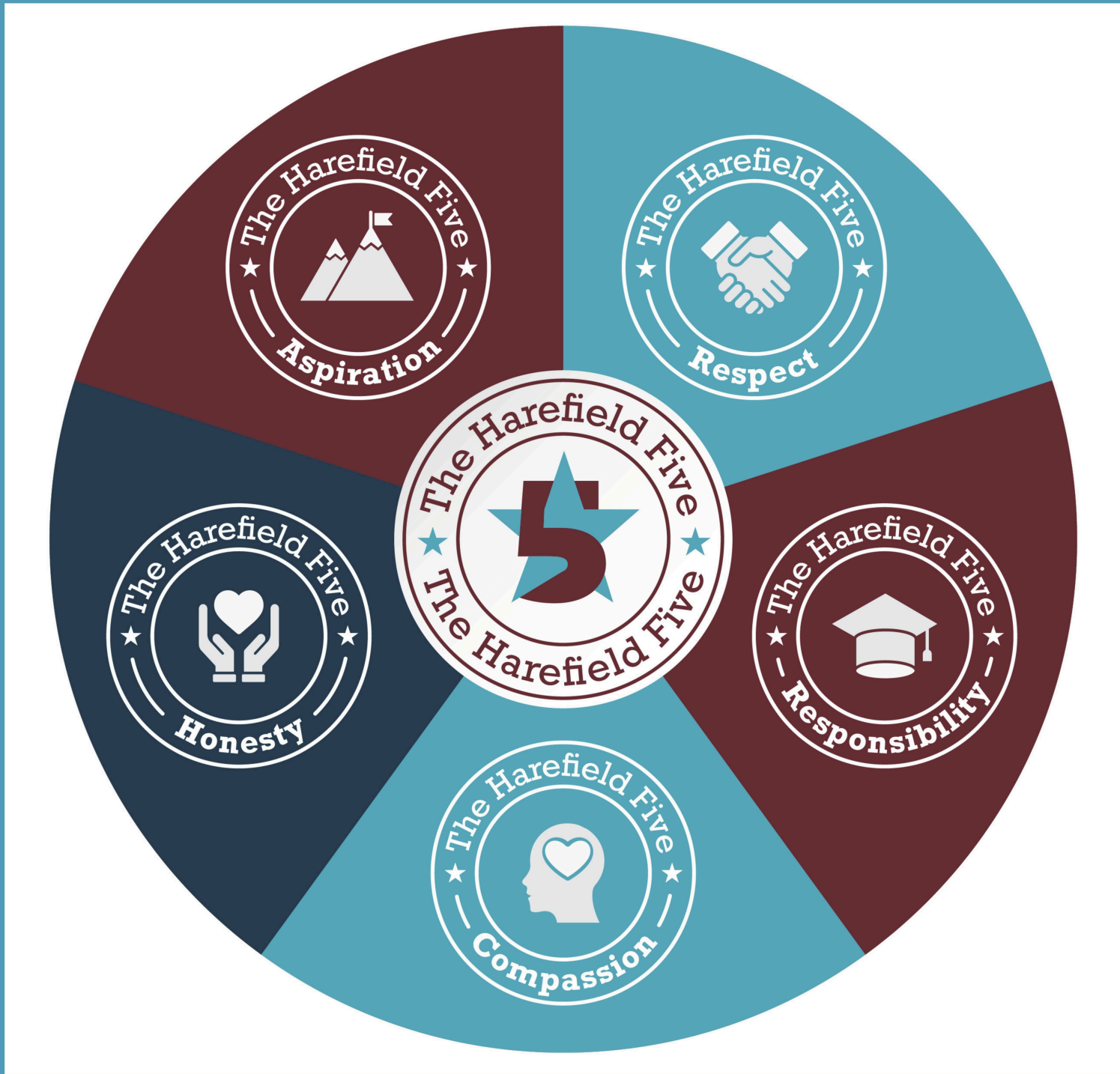
5





HAREFIELD

Achievement through Active Learning



[#theharefielddifference](https://twitter.com/theharefielddifference)