



CAREERS PROGRAMME

Benchmark 1

A Stable Careers Programme

At Harlow Fields we aim to provide pupils, families and professionals involved with our pupils with a broad range of knowledge in relation to careers and next steps after Harlow Fields.

We aspire to equip our pupils with skills that will help them work towards a career goal through a well-balanced curriculum and individual guidance.

Benchmark 2

Learning Career & Labour Market Information

In Lower and Upper School our pupils will explore their local community to gain a better understanding of what careers there are. As pupils progress towards the end of KS4 and in Sixth Form, themselves and their family can work more closely with our SEND Careers Advisor. Labour market information is available further down on website careers page.



Benchmark 3

Addressing The Needs Of Each Pupil

Our pupils' individual needs are regularly assessed through monitoring progress towards their EHCP outcomes and targets. When progressing throughout the school, and depending on the pathway the pupil is on, pupils targets can be more closely linked to careers, preparing for adulthood or next steps post Harlow Fields.

Benchmark 4

Linking Curriculum Learning To Careers

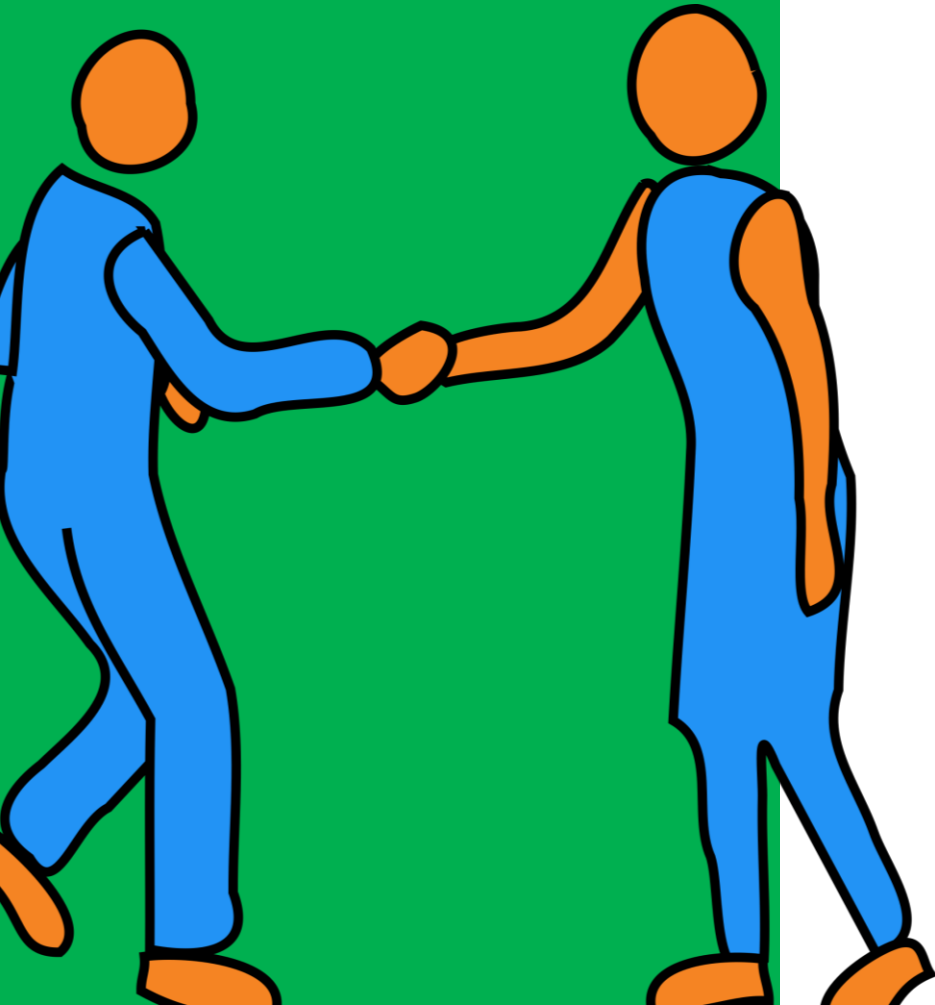
In Lower school pupils will encounter career information when visiting the community and experiencing a range of stories where different careers are identified and can be aspired to. In Upper school and Sixth Form pupils will get the opportunity to explore different ASDAN units which instil useful career skills (e.g. Preparation For Work, Working As Part Of A Group and Managing Social Relationships). Pupils may also access (pathway dependent) Maths and English functional skills which will allow work-based skills, such as time management and formal writing, to be acquired.



Benchmark 5

Encounters With Employers & Employees

In regular community visits our pupils will get the opportunity to engage and develop their own communication skills with employees. Further encounters come from visits to organisations that we have established links with (Salvation Army, Pets at Home and Cineworld).



Benchmark 6

Experiences Of Workplaces

At Harlow Fields there is scope for work experience within the school, some of our pupils have completed work with the site team or have supported with administrative tasks. We also have links with the local Salvation Army, Pets at Home and Cineworld where are pupils can visit to experience workplace tasks and have a look behind the scenes at real life places of work.

Benchmark 7

Encounters With Further & Higher Education

Links with further education providers, such as colleges local to us (Harlow College and Herts Regional College) mean that our pupils who are interested in attending can meet staff and explore course options. Our SEND Careers Advisor aims to attend annual reviews and get to know our pupils and families of those who are leaving us from Year 11 onwards.



Benchmark 8

Personal Guidance

All pupils will receive personal guidance from their teaching staff who work with them each day, so can closely support them in working towards career aspirations. As well as using advice from our SEND Careers Advisor, we also work with ECC Youth Service, where staff come in to work with our pupils on CV writing, looking for jobs and writing applications.

Further Information & Useful Links

[Essex County Council: Special Educational Needs and Disabilities \(SEND\) | Essex Local Offer](#)

[A Guide to Inclusive Apprenticeships for Careers Leaders, Parents and Guardians](#)

[Supported internships - GOV.UK](#)

[Harlow College - SEND Support](#)

[SEN Provision Information in HERTS - Hertford Regional College](#)

[SEND Activities For Kids Near Me | Club Hub UK](#)

[SNAP Charity - Registered Charity No.1077787](#)

[ECL Harlow Learning Disabilities Day Centre | ECL](#)

[Essex Careers](#)



Qualifications Explained

Please note that this is a guide to Entry Requirements, please check with each specific college / employer

Level 3

- A-Level D-A*
- Leads on to Degree, Degree Apprenticeships

Level 2

- GCSE 4-9 (C-A*)
- Leads on to Level 3 Courses, A-Levels, Apprenticeships

Level 1

- GCSE 1-3 (F-D)
- Leads on to Level 1 or Level 2 Courses, Supported Internships, Accessible Apprenticeships

Entry Level 3 (E3)

- Pre GCSE
- Leads on to Foundation or Pathways College Courses, Supported Internships, Level 1 or E3 Courses

Entry Level 2 (E2)

- Pre GCSE
- Leads on to Foundation or Pathways College Courses

Entry Level 1 (E1)

- Pre GCSE
- Leads on to Foundation or Pathways College Courses