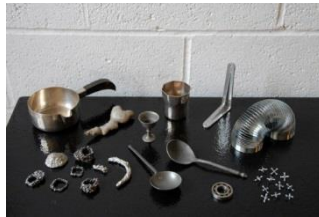


Key Diagrams



Grouping and Classifying



Comparative test

Key Information

1	<p>Properties Wood: Natural product Cut from trees Is strong, flexible and long lasting Used to build things</p>
2	<p>Properties of Plastic: Made from chemicals Flexible and can be made in any shape</p>
3	<p>Properties of Glass: Made by mixing sand and other minerals – melting into a furnace <i>Can be strong. It is transparent. Can be made in different shapes.</i></p>
4	<p>Properties of Metal (Iron and Steel): Made by mixing sand and other minerals. Melting in a furnace. <i>Can be strong. It is transparent. Can be made in different shapes.</i></p>
5	<p>Properties of Water: It is a Liquid. Natural to the planet. 71% of the Earth surface is covered in water. Life cannot exist without it. It is flexible. Can be poured, frozen and turn into a gas (steam)</p>
6	<p>Properties of Rock: It is a solid made up of different minerals Natural material from the earth Strong and can be sculptured *Used to build with.</p>

Vocabulary

Object	Something we can touch and see which can be made of different materials
Material	What something is made of
Metal	A solid material which can be hard, shiny, malleable and fusible
Property	A description of the material
Identify	To know what something is
Hard	Not easily broken
Soft	Easy to mould, cut or fold
Stretchy	A material that you can make longer or wider without breaking or tearing.
Stiff	Not easily bent
Shiny	Reflecting light
Dull	Lacking brightness
Rough	Having and uneven surface
Smooth	An even surface, free from lumps
Bendy	Can change shape through force
Opaque	cannot see through it
Transparent	Allow light to pass through so objects can be seen
Malleable	Able to be hammered or pressed into a shape without breaking
Fusible	Melted easily to be joined
Mineral	a solid found in an organic substance
Melting	Becoming a liquid by heat
Furnace	An enclosed structure in which a material can be heated
Ore	Natural solid material from which a metal is made
Liquid	Can be poured and take the shape of a container
Solid	Has a fixed shape and does not take the shape of a container
Gas	Has no fixed shape