



Dear Parents and Carers

It has been a fruitful two weeks as teaching staff have enjoyed talking to many of you and gained lots of information about your children and how to support them during the coming weeks and months. For those families who have not yet made their appointments, the teachers will be contacting you shortly to do this.

I would like to thank you all for adhering to our morning and after-school routines, they are working well and are certainly helping us keep fit and healthy! There is a reminder below about the use of our car park; it is important to remember we are trying to keep everyone safe in all areas of school life and we need your support in doing this - thank you in advance.

Please remember, should you have any questions or queries at all then contact the office so that we can direct you to the right people to help you.

Have a lovely weekend everyone and we look forward to seeing you next week,

Mrs Boothroyd

A Plea for Safer Parking – Keep us all safe, please park safely! Please do park sensibly and safely when dropping off or collecting your children from school. Please do not park on the double yellow lines that are around all of our school entrances. We have concerns, our families have raised concerns and our neighbours have expressed concerns that a small number of people are not parking safely. If you can, please park away from school and walk in, this helps us to social distance and keeps us safe from coronavirus and also keeps the area around school traffic free and safer for your children. Thank you for considering everyone and parking safely.

Hawes Side Academy Website – Do not forget to visit our website to see all our latest news. Just click on www.hawes-side.co.uk/news

Lunches – Whilst we would love to offer a more varied menu, we feel that at this stage we must continue with the packed lunch provision that has been available since 2nd September. We will keep this under review and let you know if and when we can implement a new menu.

CAR PARK CLOSED - We are again, becoming increasingly worried about safety in our car park in the morning and after school. Just this week we suffered a very near miss where a person was almost run over by a car. As previously published in the newsletter, the car park is simply not built as a drop-off/pick up zone. It is a car park for academy staff, nursery users and agreed users who require disabled access. It is of utmost importance that we keep our community safe and in order to do this we feel that we need to adopt a tighter system for access. From Monday 5th October, access to the main car park will be managed by a pass system and this will be monitored by staff at the gate. Please support us in this effort to maintain safety on our school premises. Thank you

Keeping Informed – The academy has its very own APP to keep you up to date with all our latest information. It is easy to find and download – please see instructions below.

Hawes Side Academy – Terms Dates – 2020/2021

As stated on previous newsletters please note that we have an INSET day on 2nd October for Staff Training and to complete our Parental Consultations.

	School Closes	School Opens (8.50 am)
Autumn Terms 2020 starts		Wednesday 2 September 2020
Inset Day	Thursday 1 October 2020	Monday 5 October 2020
Autumn Half Term 2020	Friday 23 October 2020 <i>(Foundation, Yrs 1 & 2 @ 3.15 pm)</i> <i>(Yrs 3, 4, 5, & 6 @ 3.20 pm)</i>	Monday 2 November 2020
Christmas 2020	Thursday 17 December 2020 <i>(Whole school @ 2.00 pm)</i>	Monday 4 January 2021
Spring Half Term 2021	Friday 12 February 2021 <i>(Foundation, Yrs 1 & 2 @ 3.15pm)</i> <i>(Yrs 3, 4, 5, & 6 @ 3.20 pm)</i>	Monday 22 February 2021
Easter Break 2021	Friday 26 March 2021 <i>(Whole school @ 2.00 pm)</i>	Wednesday 7 April 2021
May Day 2021	Friday 30 April 2021 <i>(Foundation, Yrs 1 & 2 @ 3.15 pm)</i> <i>(Yrs 3, 4, 5, & 6 @ 3.20 pm)</i>	Tuesday 4 May 2021
Summer Half Term 2021	Friday 21 May 2021 <i>(Foundation, Yrs 1 & 2 @ 3.15 pm)</i> <i>(Yrs 3, 4, 5, & 6 @ 3.20 pm)</i>	Monday 7 June 2021
Summer 2021	Tuesday 20 July 2021 <i>(Whole school @ 2.00 pm)</i>	

Thank you for your support – Thank you for ensuring that your child does not attend the academy if they are displaying COVID-19 symptoms and for all your support and understanding in the cases where we have had to send pupils home to obtain a test or isolate since our return to the academy.

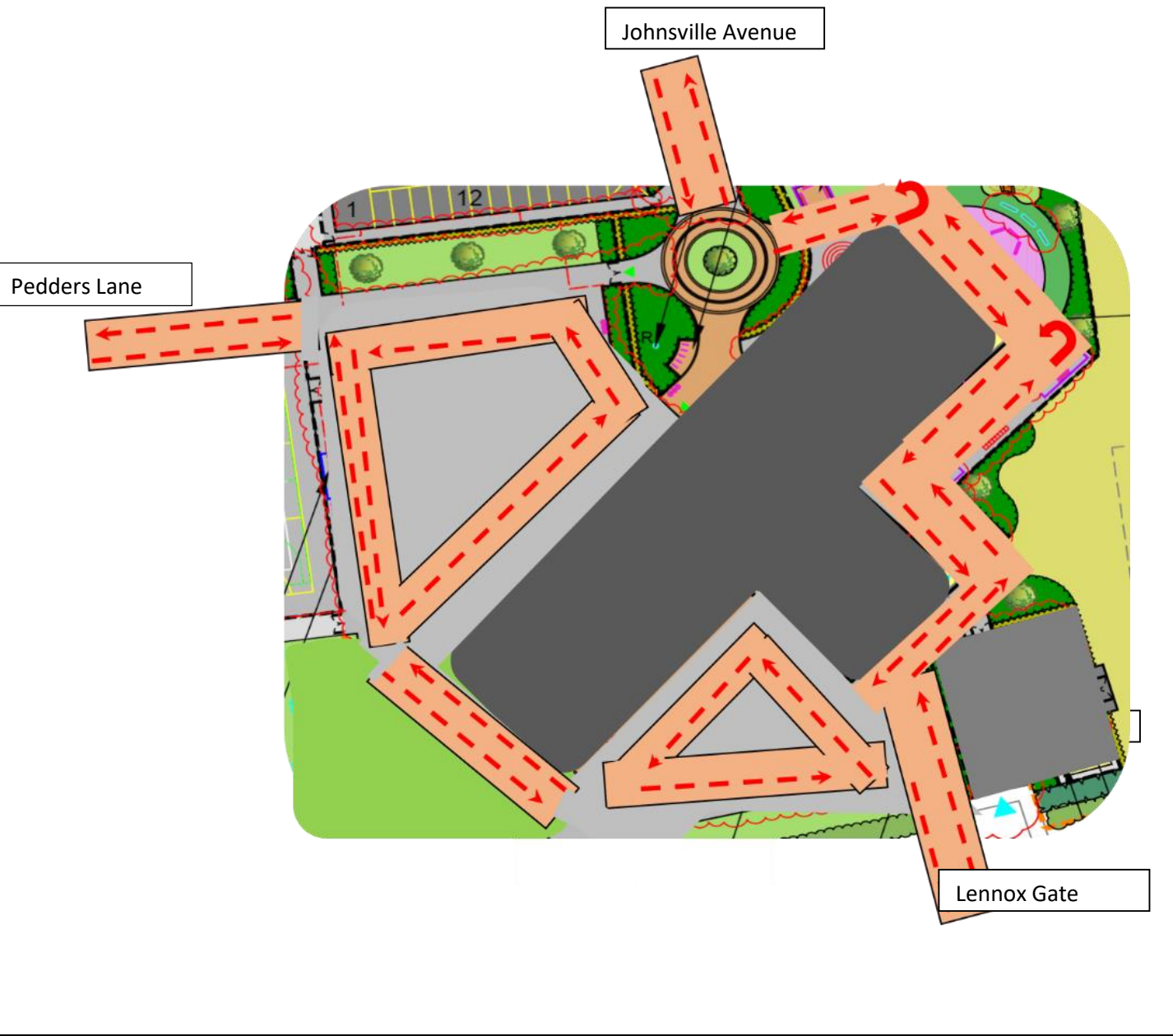
We never like to send children home from school, however, all your support during this time is very much appreciated.

Coronavirus Update – As you may be aware, the government have this week announced restrictions to be implemented from Monday 14th September (see <https://www.gov.uk/coronavirus>).

This new guidance does not change academy operations at this time however, we do ask that you continue to observe our request to use the one way system, maintain your social distance and do not stand or wait in the grounds during drop off and pick up to reduce the possibility of virus transmission. Your support with this is very much appreciated and will help us all remain as safe as possible.

One Way System

Now that we have welcomed our new Foundation Stage pupils to the academy full-time, we have our revised one-way system which is working well. Please see below:





Blackpool SEND Service Newsletter

Supporting children, young people, families and schools with young people within the area of Special Educational Needs.

Autumn Term 2020

Sleep Town

SleepTown is an app that helps your child attain a healthy, regular sleep schedule. The can construct amazing buildings just by achieving their bedtime and wake-up goals every day.



How it works: 3 steps to a healthy sleep schedule.

1. Set their own challenging bedtime and wake-up goal.
2. Open the SleepTown app before bedtime goal and start constructing a building.
3. Wake up before their wake-up goal, shake your phone/tablet to clear your mind, and see which building they got. Every morning the building is a surprise that will motivate them to wake up!

Repeat these steps every day to maintain a regular sleep cycle and create a lovely "SleepTown"!

Blackpool SENDIASS

Blackpool Special Educational Needs and Disability Information, Advice and Support Service (SENDIASS) is a statutory service. They offer free, independent, confidential and impartial information, advice and support to parents and carers of children and young people with special educational needs and disabilities (SEND) ages 0-25. Follow the link below for more information and contact details.

<http://www.blackpool.gov.uk/Residents/Health-and-social-care/Children-and-families/SENDIASS/Home.aspx>

Communication and Interaction



16th October 2020 is Developmental Language Disorder Day. Developmental Language Disorder (DLD) is diagnosed when children fail to acquire their own language for no obvious reason. This results in children who have difficulty understanding what people say to them, and struggle to articulate their ideas and feelings. Recent research has shown that, on average, 2 children in every class of 30 will experience DLD severe enough to hinder academic progress. The theme this year is #DLD: See me.

For more information check out this website <https://radld.org>



25th November 2020: No Pens Day Wednesday is an annual day of speaking and listening activities that takes place in schools and education settings across the country. The event raises awareness of communication as a key life skill. Verbal communication skills are important for learning to read and write, managing emotions, developing friendships and entering employment. Ask your child if they've had a day not using their pens! More information can be found at <https://ican.org.uk/no-pens-day-wednesday>

Welcome back to the new school year, we will now be sending out newsletters on a half-termly basis. We hope to continue to share information, strategies and support for you all.

If you would like any advice or support with any aspect of your child's learning, please contact your child's teacher. Your child's school is always there to help. Further information can be found on the Blackpool SEND Local Offer page on Facebook.

<https://www.fvirectory.co.uk/kb5/blackpool/directory/localoffer.page?directorychannel=2&district=blackpool>

Useful Websites

-  <https://www.blackpool.gov.uk/Residents/Health-and-social-care/HeadStart-Blackpool/HeadStart-Blackpool.aspx>
-  <https://blackpoolbetterstart.org.uk/>

Many of us are familiar with negative thoughts that come into our heads each day. At times, it can feel like the world is full of gloom and doom. So what can we do to help children and young people develop a habit of thinking more positively about themselves?

Follow the link below for 5 top tips:

<https://beaconschoolsupport.co.uk/new-letters/5-top-tips-to-get-your-children-thinking-positively>

Do you have a child or young person with a young person's mental health issues? Do you need support with your child or young person's mental health? Do you need support with your child or young person's mental health? Do you need support with your child or young person's mental health?

Monday: 3-5pm
01253 955858

Learning and Wellbeing

In light of children returning to school and the easing of lockdown. Learning and Wellbeing Psychology have put together a short hand washing song.

<https://www.learningandwellbeing.org/videos>

Online safety

The COVID-19 pandemic increased the amount of time children are spending online. SafeToNet Foundation are giving 1 million licences free for life of their @SafeToNet software to families in the UK.

To sign up, click on the following link

<https://safetonet.com/foundation/covid>

SCHOOL ADMISSIONS – SEPTEMBER 2021

PRIMARY APPLICATIONS

If your child was born between **1st September 2016** and **31st August 2017**, you must apply for a Primary School Reception place for September 2021. **(Applications are required for all children with a 4th birthday between 1st September 2020 and 31st August 2021).**

SECONDARY APPLICATIONS

If your child is in the final year of primary education (Year 6), you must apply for a Secondary School Year 7 place for September 2021. **(Applications are required for all children who are in their final year at a primary school).**

If you live in Blackpool (pay council tax to Blackpool) –

**APPLY FOR A SCHOOL PLACE ON-LINE AT:
www.blackpool.gov.uk/schooladmissions**

Before you complete and submit your application you are advised to read Blackpool Council's guide for parents at: www.blackpool.gov.uk/schooladmissions

The on-line system offers a quick and secure means of applying for places. Paper applications and information booklets are available from schoolaccess@blackpool.gov.uk or telephone **01253476637**.

CLOSING DATES FOR APPLICATIONS FOR SEPTEMBER 2021

PRIMARY APPLICATIONS – BY 15TH JANUARY 2021

SECONDARY APPLICATIONS – BY 31ST OCTOBER 2020

Applications received after the closing dates will be processed after all those which are received on time. If you apply late this may reduce your chances of an offer for one of your preferred schools.

PLEASE DO NOT LEAVE IT UNTIL THE LAST MINUTE!

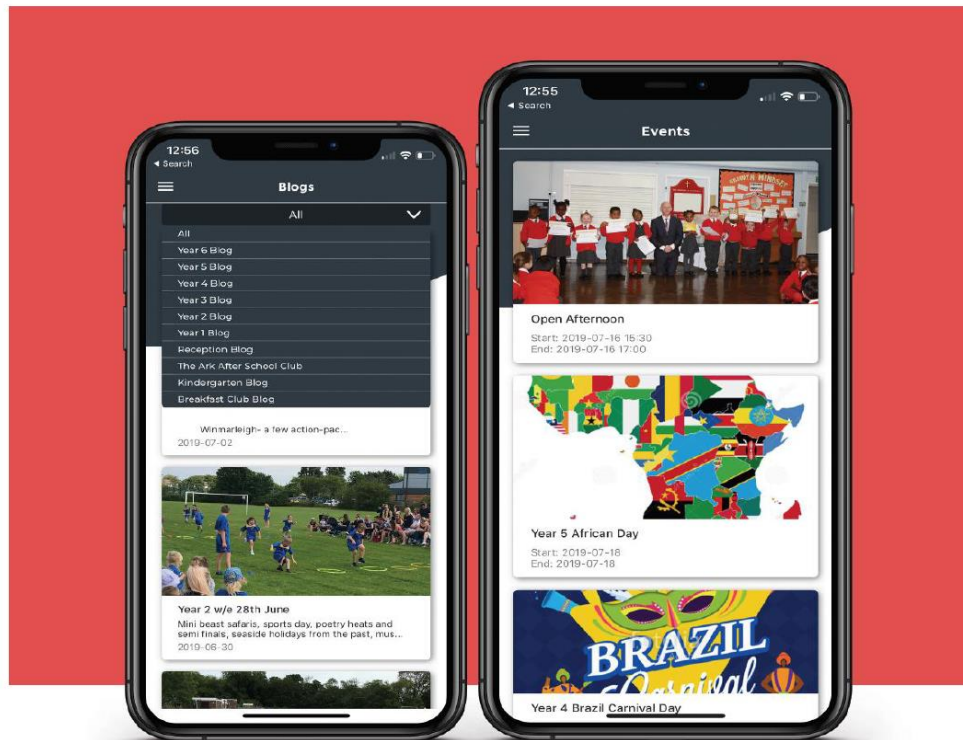
If you pay your council tax to Wyre or Fylde then you will need to access Lancashire's on-line application system at www.lancashire.gov.uk You can still express preferences for Blackpool schools on Lancashire's application system.

www.blackpool.gov.uk

Blackpool Council

01253 476637

Introducing our new App...



Here at Hawes Side Academy we now have our very own App! This can be downloaded on both apple and android devices and is a great way to keep up to date with everything going on at school.

Through the app you can access the school calendar, latest news and announcements, which will come to your device as notifications. All of which we hope will help to support communication with our school community and keep everyone up to date!

The App is free to download and easy to use. Simply search for 'Hawes Side Academy' in the App Store or Play Store and download to get started. That's it you are ready to go!

We hope you find the new app useful.



schudio