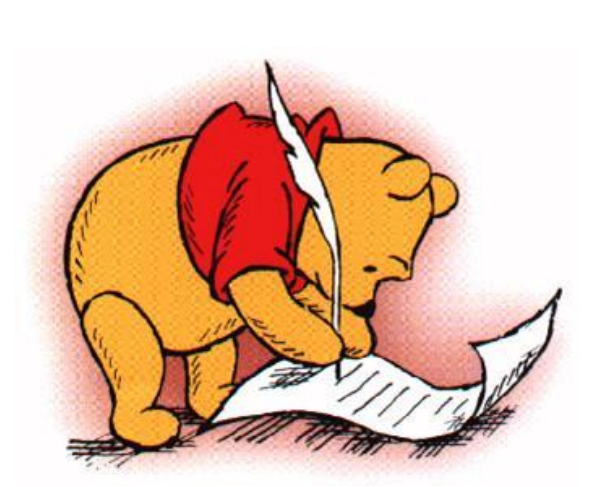


Monday 19th October

LG: to identify the audience for
my writing.

Recap



- Identify how
 - some sentences start with time conjunctions
 - some sentences start with useful persuasive writing ideas.
- Look at Pooh Bear's letter – how did he start his sentence off?
- Make a list of Pooh's sentence starters.

The Prime Minister
10, Downing Street
London



Hundred Acre Wood

12th October 2020

Dear Sir,

I believe honey should not be eaten by anyone except bears. It should be against the law. Here are my reasons.

Firstly, it helps to keep our bear fur in good condition. Bears love honey, it is a lovely sticky substance which takes a long time to lick off. So much licking helps to keep the fur in good condition.

Secondly, only bears have perfect tongues for collecting honey. They are long enough to get into both honey jars and beehives. The roughness of the tongue means all the honey is cleanly scraped.

Thirdly, bears need honey. No other food provides a bear with as much goodness and pleasure. It helps keep us calm and quiet, otherwise we get very grumpy and aren't fun to be around.

If everyone continues to eat honey, there will not be enough. This will make a bear's life very hard to bear. Bears like jam but it is not as good as honey.

I am sure that you will stop other people from eating honey, so it can be saved for the bears. Humans can have jam instead.

Yours sincerely,

P. Bear.

Pooh Bear

For and Against School Trips

- Think of reasons for and against school trips.
- You are going to have a debate on whether school trips are useful or not.



Debate

- With a partner – decide who will be FOR and AGAINST
- Practise reading out your persuasive reasons on why school trips are or are not useful.
- Remember to use your persuasive time starters -

Model creating for and against arguments using sentence starters.

First of all

I strongly believe

I strongly disagree

Secondly

Thirdly

In conclusion

FOR

- Worth saving up for – a special occasion!
- Creating memories with your class and learning outside the classroom.
- Experience real history not just through a computer screen!
- See the real life artefacts.

AGAINST

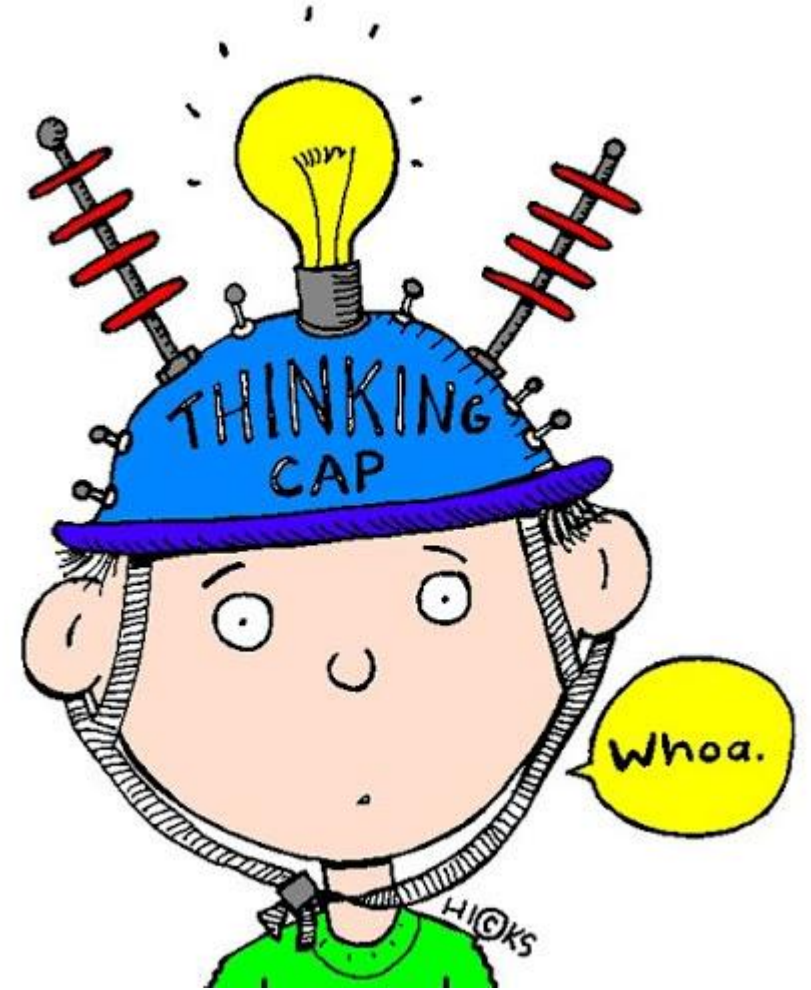
- Too expensive!
- You miss your lessons!
- You can just learn about things in the classroom.
- You can just google the artefacts and look at them on the computer screen.

Tuesday 19th October

LG: to identify and develop
emotive language.

Recap

Recap sentence starters from yesterday – what did the children say for and against school trips?



FOR

- Worth saving up for – a special occasion!
- Creating memories with your class and learning outside the classroom.
- Experience real history not just through a computer screen!
- See the real life artefacts.

AGAINST

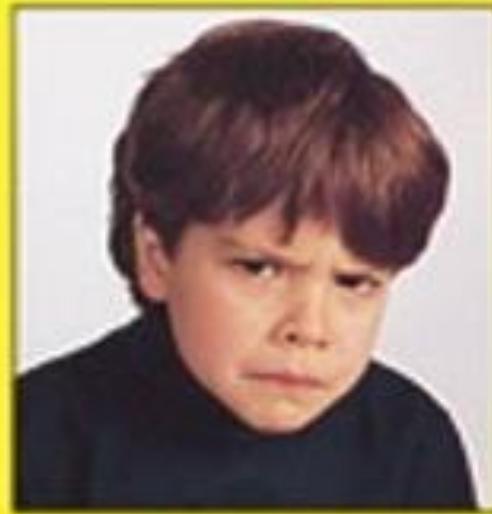
- Too expensive!
- You miss your lessons!
- You can just learn about things in the classroom.
- You can just google the artefacts and look at them on the computer screen.

Emotive Language

- What is an emotion?
- Can you think of an example?
- Emotive writing is when you write about how something makes someone feel.
- An informative letter includes facts – you want somebody to know something.
- A persuasive letter includes feelings and facts - you are trying to make the reader feel a certain way.



How do you think the children are feeling?



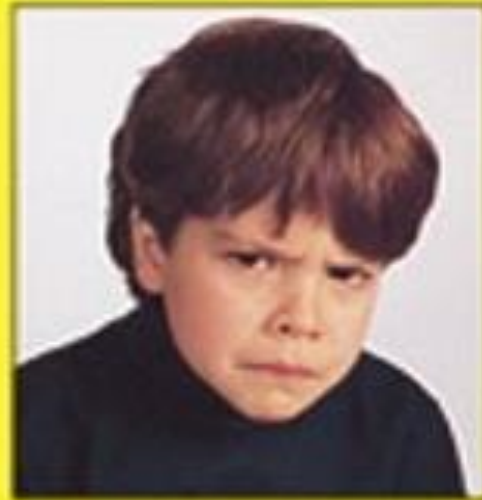
Did you guess correctly?



happy



sad



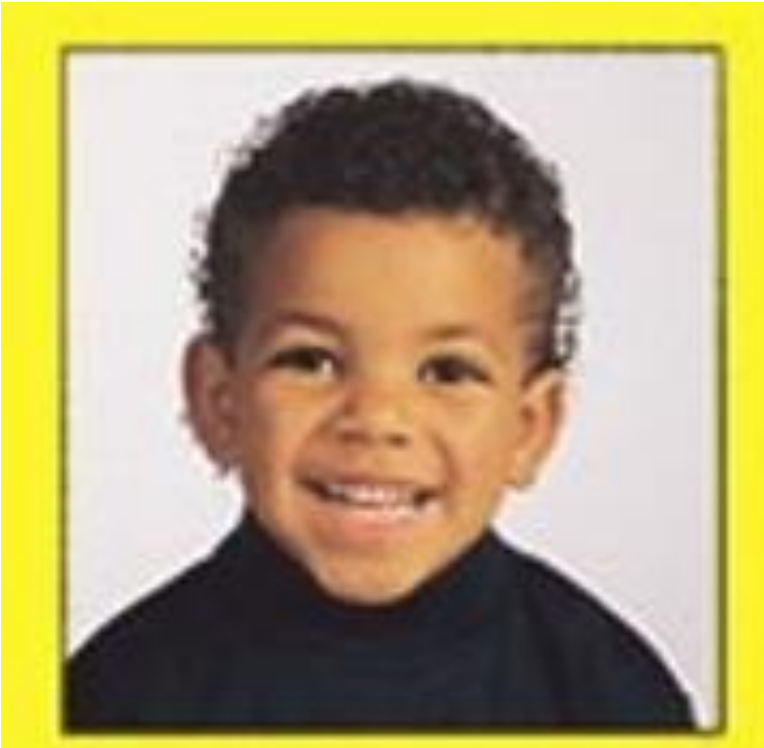
angry



excited

Emotive language

- Think of words that would make you feel the same emotions as these children



Developing Emotive Language

We need to convince people to feel a certain way if we are going to persuade them to visit Stonehenge – excited, happy, interested!



Which sentences are emotive?

Stonehenge is a great place.

Stonehenge is an **exciting** and **fun** place to visit for **your children**.

Stonehenge has a museum centre on the Stone Age.

Stonehenge's museum centre is an **interesting** place **for you** to learn about the Stone Age.

School trips allow learning outside the classroom to be fun.

School trips **help your children** to learn and have **fun** outside the classroom.

Task

1. Sort the sentences into emotive and non-emotive sentences
2. Create your own emotive sentences

There is a world famous museum on site.

Stonehenge is an exciting day out for you and your family.

Stonehenge is located in the countryside.

You will learn so much at the world famous museum.

The countryside will provide you with much needed relaxation.

There is also a shop and restaurant.

There is so much for your family to enjoy, with food, drinks and a souvenir shop.

Stonehenge has a museum for visitors.

Wednesday 18th October
LG: to identify and develop
rhetical questioning.

Rhetorical Questions

A rhetorical question is one that does not require an answer.

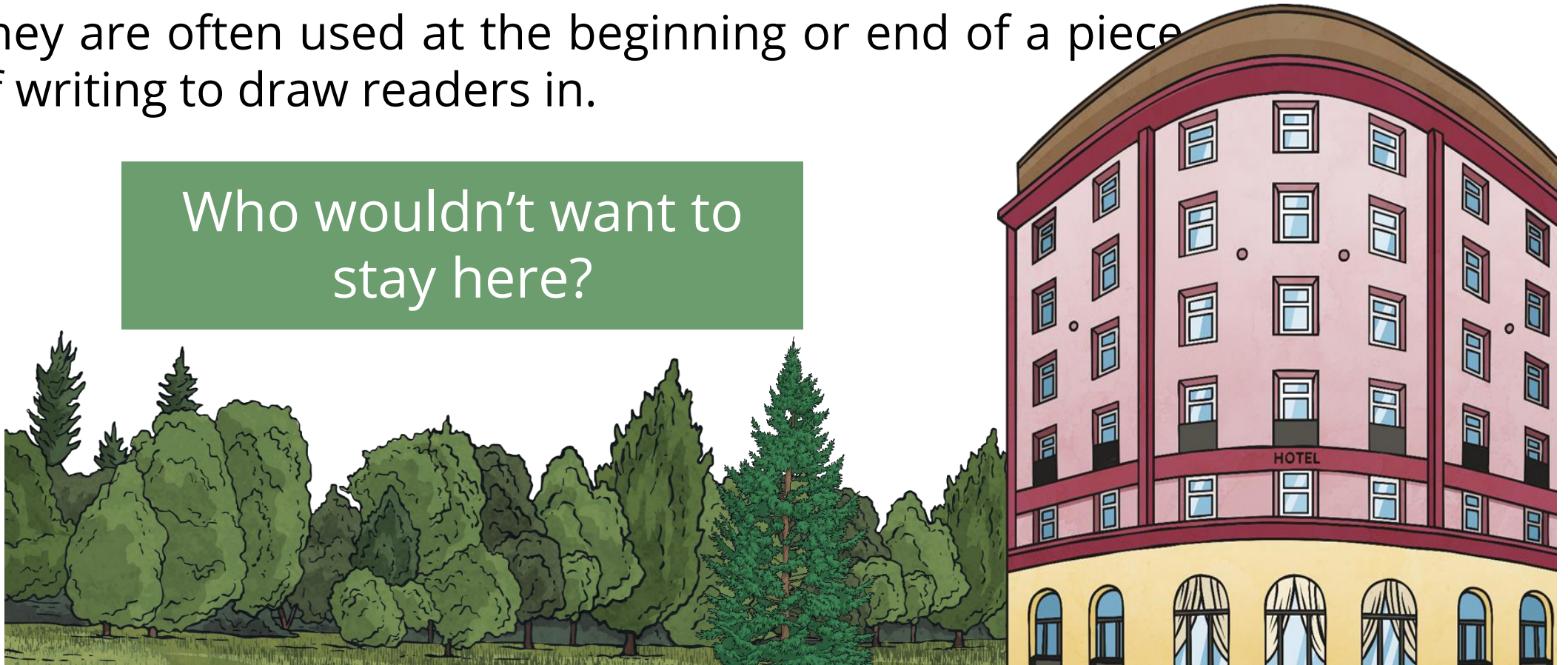


Rhetorical Questions

Rhetorical questions are often used to **persuade** people.

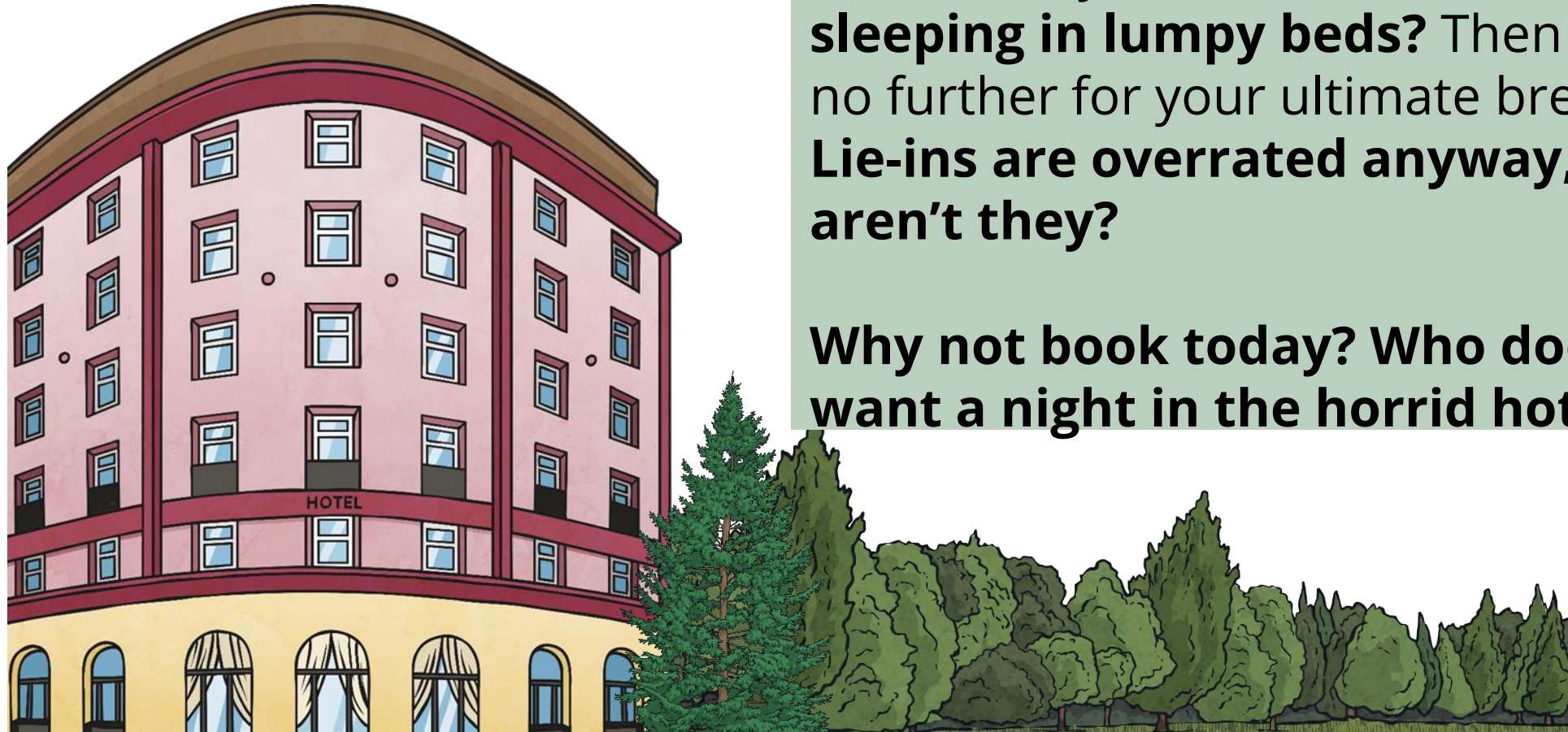
They are often used at the beginning or end of a piece of writing to draw readers in.

Who wouldn't want to
stay here?



Rhetorical Questions

Spot the rhetorical questions in this passage and write them on your whiteboards.



Why not visit our most horrid hotel? You'll be surprised at what an awful time you will have! **Love sleeping in lumpy beds?** Then look no further for your ultimate break. **Lie-ins are overrated anyway, aren't they?**

Why not book today? Who doesn't want a night in the horrid hotel?

Rhetorical Questions

You will often see rhetorical questions **begin with:**

Do you really want to
see Stonehenge
close?

Are you
someone who
can help?

Why not join the
English Heritage
History club?

Who can deny
Stonehenge is a
world famous
site?

Who doesn't
love a day out
to a museum?

Enjoy history?



Rhetorical Questions

Turn these statements into rhetorical questions.

Visit one of the most world famous heritage sites.

You'll have the history trip of a lifetime!

Enjoy being served by our history experts and informative staff.

Visit the amazing gift stores and try the delicious café food.



Rhetorical Questions

Answers

Do you fancy a once in a lifetime history trip?

Who doesn't want to visit one of the world's most famous heritage sites?

Love visiting amazing gift stores and eating delicious café food?

Who can deny that they will enjoy learning from history experts and informative staff?



Can you create your own rhetorical questions about Stonehenge?

Use these sentence starters to help:

Do you think that...?

Don't you think that...?

Isn't it time to...?

How would you feel if...?

Have you ever thought about...?

Do you really...?

Are you...?

Who can deny...?

Who doesn't love...?



Thursday 19th October
LG: to draft a persuasive
letter.

Writing to Persuade

When you are writing to persuade, you are trying to convince your reader to do something or to buy something. You can do this by using your words to encourage or influence them.

There are lots of different ways that you can write to persuade.

We have been learning how to write persuasive letters.

Can you think of a time when you read or heard something really persuasive?



Let's recap the features
of a persuasive letter

Address

The Prime Minister
10, Downing Street
London



Hundred Acre Wood

greeting

Dear Sir,

12th October 2020

date

Introduction

I believe honey should not be eaten by anyone except bears. It should be against the law. Here are my reasons.

Main reasons

Firstly, it helps to keep our bear fur in good condition. Bears love honey, it is a lovely sticky substance which takes a long time to lick off. So much licking helps to keep the fur in good condition.

Secondly, only bears have perfect tongues for collecting honey. They are long enough to get into both honey jars and beehives. The roughness of the tongue means all the honey is cleanly scraped.

Main reasons

Thirdly, bears need honey. No other food provides a bear with as much goodness and pleasure. It helps keep us calm and quiet, otherwise we get very grumpy and aren't fun to be around.

If everyone continues to eat honey, there will not be enough. This will make a bear's life very hard to bear. Bears like jam but it is not as good as honey.

Conclusion

I am sure that you will stop other people from eating honey, so it can be saved for the bears. Humans can have jam instead.

Signature

Yours sincerely,

P. Bear.

Pooh Bear

In your letter, remember to include all the things we have learned about:

Sentence starters

The Prime Minister
10, Downing Street
London



Hundred Acre Wood

12th October 2020

Dear Sir,

I believe honey should not be eaten by anyone except bears. It should be against the law. Here are my reasons.

Firstly, it helps to keep our bear fur in good condition. Bears love honey, it is a lovely sticky substance which takes a long time to lick off. So much licking helps to keep the fur in good condition.

Secondly, only bears have perfect tongues for collecting honey. They are long enough to get into both honey jars and beehives. The roughness of the tongue means all the honey is cleanly scraped.

Thirdly, bears need honey. No other food provides a bear with as much goodness and pleasure. It helps keep us calm and quiet, otherwise we get very grumpy and aren't fun to be around.

If everyone continues to eat honey, there will not be enough. This will make a bear's life very hard to bear. Bears like jam but it is not as good as honey.

I am sure that you will stop other people from eating honey, so it can be saved for the bears. Humans can have jam instead.

Yours sincerely,

P. Bear.

Pooh Bear

Emotive language

Stonehenge is an exciting day out for you and your family

You will learn so much at the world famous museum.

The countryside will provide you with much needed relaxation.

There is so much for your family to enjoy, with food, drinks and a
souvenir shop.

Rhetorical

questions

Do you fancy a once in a lifetime history trip?

■

Who doesn't want to visit one of the world's most famous heritage sites?

Love visiting amazing gift stores and eating delicious café food?

Who can deny that they will enjoy learning from history experts and
informative staff?

Home
Learners

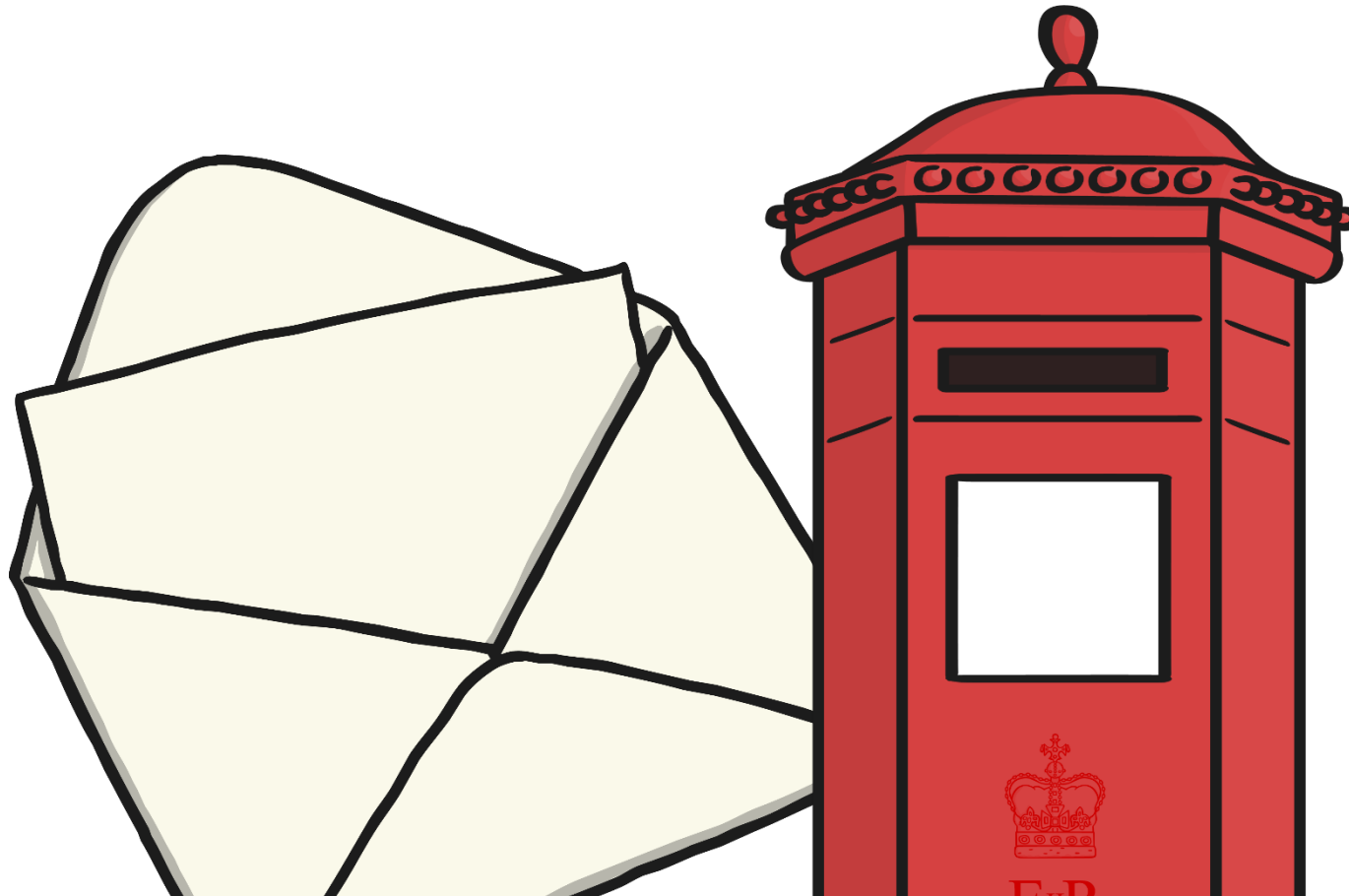
Now is the time
to convince
people to visit
Stonehenge.

Write a letter
persuading
somebody to
visit the
historical site.

Address		Date	
Dear ----- Introduction		The main point you want to make.	
Argument 1		<i>Remember evidence!</i> Useful words: Firstly... Secondly... In my opinion... Some believe that... I feel that... I am sure that... It is certain... Therefore... Moreover... For this <u>reason</u> ... -Reasons for -Reasons against -Ask questions to get the reader thinking	
Argument 2			
Argument 3			
Conclusion		Sum up the main argument.	

Now try your own!

Good luck!



Friday 23rd October
LG: to publish a letter.

