

## HIGHFIELD ELY ACADEMY - PROJECT UPDATE

### MEET THE R G CARTER TEAM



**PROJECT MANAGER**  
**WILL ROBINSON**  
07881 817422  
will.robinson@rgcarter.co.uk

Will is responsible for the overall delivery of the project, particularly focussing on resources, quality, compliance and stakeholder engagement.



**PROJECT MANAGER**  
**DAN COX**  
07484 525563  
dan.cox@rgcarter.co.uk

Dan is our site-based Project Manager and works closely with both Will and Andy to manage the construction activities (including various deliveries) to site etc.



**SITE MANAGER**  
**ANDY EASY**  
07770 794523  
andy.easy@rgcarter.co.uk

Andy is responsible for the day-to-day running of the site. He will manage construction activities and maintain health and safety standards in and around site.

### THE PROJECT AND CONSTRUCTION ACTIVITIES

#### Project Summary

The project will enhance the provision in two main areas:

- A dedicated new wing for Early Years and Key Stage One pupils;
- A new block including hydrotherapy pool, sports hall and fitness suite, alongside independent teaching and social areas to meet the needs of young adults with Profound and Multiple Learning Difficulties.

#### Project Update

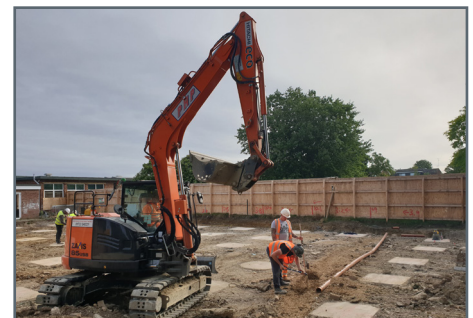
Throughout September, we will be undertaking the following works:

- Installation of below ground drainage
- Substrate for new roadways and carparks to the rear of the site
- Installation of modular units

Once we have obtained the relevant permission, we will undertake the Highways connection (this could take 1-3 months).

Our working areas have been segregated via secure fencing to ensure the safety of all persons on site. We have also installed viewing panels within the solid hoarding by teaching areas to allow the pupils to view the works as they progress (the top image shows the decorated hoarding from the KS1 playground with viewing panels installed at two heights).

Since our last newsletter, we have successfully carried out the installation of the tarmac base course to the new carpark and roadway at the front of the site. We have also installed the modular units, which will form the new KS1 wing towards the Northwold boundary.



### FEEDBACK AND PROJECT INTEREST

Your feedback is important to us. Please do not hesitate to contact Will, Dan or Andy on the contact details above, should you have any queries or concerns.