



Hillside Primary School and Nursery

“Achieving Greatness Together”

Friday 20th September, 2024



'Achieving Greatness Together'



This year we are keen to build upon our strength of parent partnership this year. We want to do everything we possibly can to help parents and families support their children. This week, Bernadette from Realise Futures Family Learning led a Maths workshop for parents. Bernadette said, "Attend a Step Ahead In Maths Course' at the school. It's a perfect opportunity to find out what and how your children learn Maths and gain some ideas and activities that you can use at home to support their learning. You never know; you might learn something new too!" Next Thursday, Bernadette will be starting a free 7-week Maths course at Hillside on Thursday mornings from 9 to 11.30am. We hope you can join us!

Our Parent Council will commence on Monday 30th September at 2.30pm. We meet every half term to gather your feedback on a variety of school matters and discuss ideas to improve. Please let the office team know if you would like to join our team.

Wishing you a wonderful weekend!

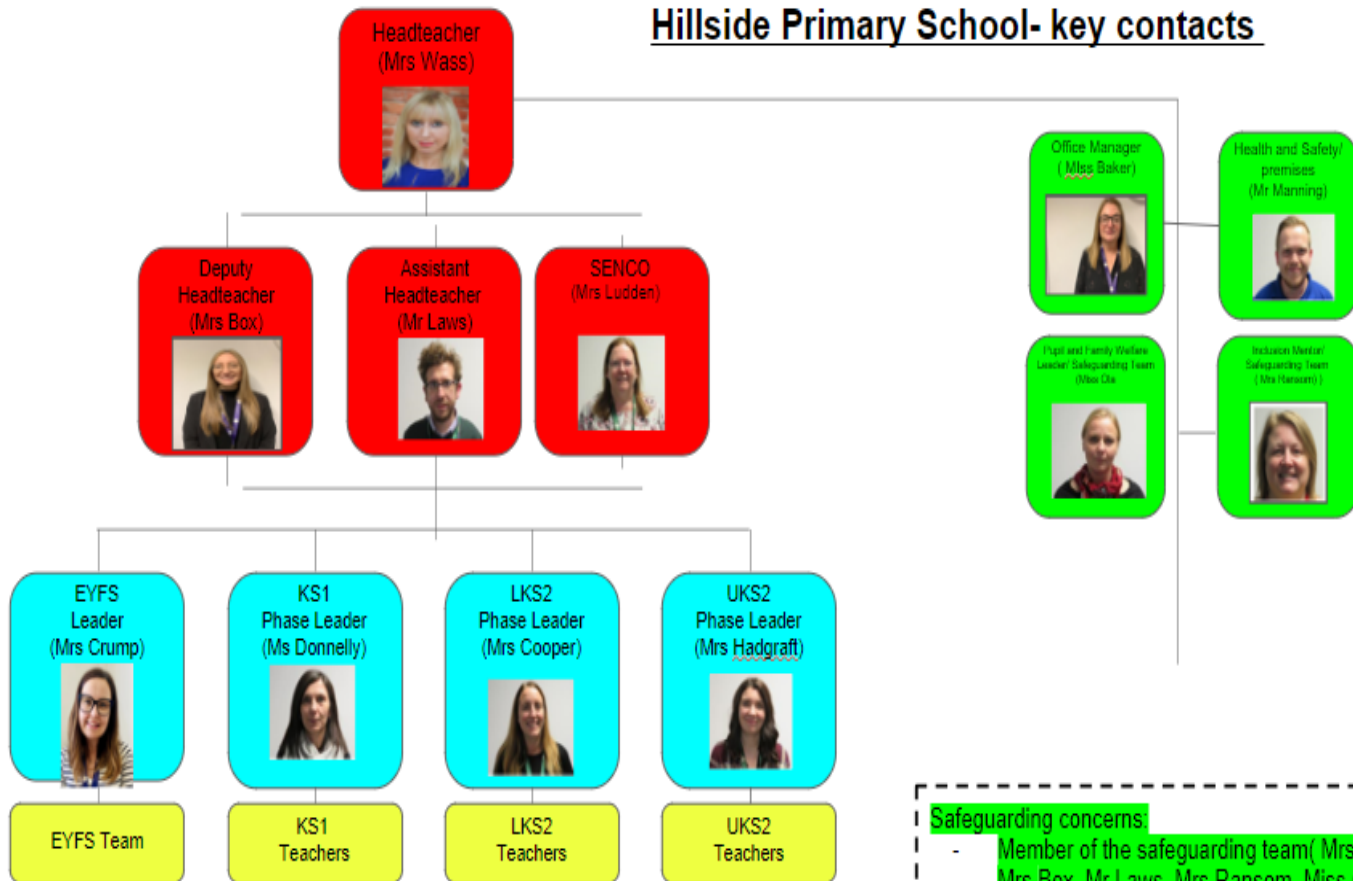
Best wishes,

Mrs Wass





Hillside Primary School- key contacts



If you have any teaching and learning issues or concerns contact should be made as follows, starting with:

1. Class Teacher in the first instance via Class Dojo, End of Day, Phone Call
2. Phase Group Leaders if unresolved by the class teacher
1. Assistant Headteacher (Mr Laws) or Deputy Head (Mrs Box) or Headteacher (Mrs Wass) if the matter needs further attention.

Safeguarding concerns

- Member of the safeguarding team (Mrs Wass, Mrs Box, Mr Laws, Mrs Ransom, Miss Ola)

Attendance

- Office/ Pupil and Family Welfare Leader (Miss Ola)

General queries

- Office team member

Finance

- Office Manager (Mrs Baker)

Premises

- Site Manager (Mr Manning)

At The National College, our WakeUpWednesday guides empower and equip parents, carers and educators with the confidence and practical skills to be able to have informed and age-appropriate conversations with children about online safety, mental health and wellbeing, and climate change. Formerly delivered by National Online Safety, these guides now address wider topics and themes. For further guides, hints and tips, please visit nationalcollege.com.

What Parents & Educators Need to Know about FINAL FANTASY XIV



WHAT ARE THE RISKS?

The video game Final Fantasy XIV launched in 2010, and, despite being critically panned, it saw an overhaul that has made it one of the biggest success stories in gaming. Its huge world, epic story and versatile combat system have continued to draw in new players, but there's a lot that trusted adults need to be aware of – not least the cost of paying monthly to play.

ALWAYS ONLINE

Final Fantasy XIV is an MMORPG, which stands for Massively Multiplayer Online Role-Playing Game. Much like World of Warcraft, players create a character in a chosen class and level up by completing quests to gain power and items. The game requires a constant internet connection, whether you're playing on PC, Mac, PlayStation or Xbox, and there's no option to play offline.

REGULAR EXPANSIONS

As with similar titles in the genre, players can purchase expansions to unlock additional content for the game. Those without the expansions will be locked out of certain new quests and activities, meaning that young people who play regularly will potentially have the next release earmarked on their calendar, ready to buy it as soon as possible.

IN-GAME PURCHASES & SUBSCRIPTION FEE

Users need to pay £6.99 per month to play Final Fantasy XIV, but there is a free trial. If someone stops paying, they'll lose access to their character (although they'll be able to pick up the payments again and resume where they left off). If a player forgets to cancel their payments, however, those subscription fees will continue rolling on automatically.

VOICE & TEXT CHAT

Final Fantasy XIV lets players send chat messages in-game or speak to each other over voice chat. On the one hand, that provides plenty of choice for how those enjoying the game can interact with their fellow fans. On the other hand, however, it's easier than in many games to receive unprompted messages from a stranger, with whom you constantly share your play space.

VIOLENCE

While Final Fantasy XIV has a fairly light tone throughout some of its quests, many involve killing enemies and sometimes even wild animals. The violence isn't especially strong – more comparable to a cartoon or anime style – but the act alone may make some children feel uncomfortable, if they're not yet able to separate fictional harm from the real kind.

POTENTIAL FOR ADDICTION

As with World of Warcraft, there's an element of addiction to Final Fantasy XIV. The gameplay loop can be quite engrossing, as minutes turn into hours and hours into days while playing alone or with friends. This can potentially lead to missing real-life events, a lack of interest in any activities not related to the game and procrastination around responsibilities like schoolwork.

Advice for Parents & Educators

MANAGE PLAYTIME

Playtime limits are a great way to counter the addictive qualities of games like Final Fantasy XIV. They allow you discuss why it's still important to enjoy things outside of gaming while still letting a child enjoy playing online with their friends when it makes sense to do so. It's all well and good to have fun with a game, so long as they're able to step away and reconnect with the real world.

PLAY TOGETHER

The free trial makes it extremely easy to jump into Final Fantasy XIV and play alongside a child, provided they're old enough. Not only does that help you ensure that settings are adjusted for their privacy and safety, but it may also end up becoming a bonding experience for you both and any other family members that want to try it out.

MAKE USE OF THE FREE TRIAL

The Final Fantasy XIV free trial is a generous one, with no limits on how long someone can play until their character hits level 70. That's easily dozens of hours for a child to go through the game, complete quests, and see if they enjoy it before purchasing expansions or subscribing to a membership. They may well move on to something else before you need to spend so much as a penny.

REMEMBER, IT'S A PEGI 16

Despite its often-relaxing nature, Final Fantasy XIV carries a PEGI 16 rating for violence and drugs (although the latter is due to a character smoking a pipe on occasion). There's minimal blood, but characters can attack enemies (and other players) with weapons and spells. Take a look at some gameplay videos to see if the content is appropriate for a younger player.

Meet Our Expert

Lloyd Coombes is the Editor-in-Chief of GGRecon, and has been working in the gaming and tech industry for five years. A longtime fan of online games, he's also a parent, and therefore understands the importance of online safety. Writing mainly about tech and fitness, his work has previously been published at sites including IGN, TechRadar and plenty more.



The National College

Source: See full reference list on guide page at: <https://nationalcollege.com/guides/final-fantasy-14>

@wake_up_weds

/www.thenationalcollege

@wake.up.wednesday

@wake.up.weds

Users of this guide do so at their own discretion. No liability is entered into. Current as of the date of release: 18.09.2024



Hillside Primary School and Nursery

“Achieving Greatness Together”

Friday 20th September, 2024



Remembering more and doing more at Hillside!

Introducing Mrs Box our Deputy Headteacher

I've worked in education around Suffolk for the past 15 years with a keen passion for making learning fun, enjoyable and memorable for children. I've worked closely in training unqualified teachers, teachers and middle leaders particularly in teaching, learning and curriculum. I also specialise in teaching 'Maths Mastery' which I am keen to develop at Hillside.

Being active learners who enjoy the 'life' of the school is incredibly important for your children and I am entirely devoted to supporting the fantastic team at Hillside to ensure all children experience this. As a child I also came to Hillside primary school and it feels wonderful to be back, passing forward the passion for learning that my teachers gave to me.

This year I'll be working closely with the team on developing our creative curriculum and offering exceptional enrichment opportunities across the school to make learning memorable!





WHOA MUSICIZM

FREE MUSIC LESSONS TAUGHT BY A QUALIFIED MUSIC TEACHER!
 FOR YOUNG PEOPLE WHO WOULD LIKE TO LEARN
 TO PLAY AN INSTRUMENT
 OPEN TO YEARS 6 TO 11
 LIMITED SPACES

4PM - 6PM ON FRIDAYS IN TERM TIME
 ST MARY STOKE CHURCH HALL

BOOK YOUR PLACE NOW: STMARYSTOKE@GMAIL.COM

Time & Space

AFTER SCHOOL CLUB

Wednesdays 3:15 - 4:15

What's Included:

- Craft Activity
- Christian Story
- Optional Prayer
- Song

ALL WELCOME - FREE OF CHARGE

[Back](#)

Cashpot for Schools is our mission to support primary schools across the UK.

Every time you shop with Asda Rewards from 2nd September to 30th November, we will donate 0.5% of your total spend to a primary school of your choice. Plus, Asda will pop £1 into your school's Cashpot every time someone opts in.

Even more, Asda will get your school started with a further £50. To redeem this, make sure to shop & scan and remind your school to sign up with Parentkind.

For more info, please see our **Terms & Conditions**.

You won't give up any of your own earnings, and your Cashpot will continue to grow! **Shop. Scan. We donate!**

Great, count me in



Success really does start with attendance

We support first!

We want every single one of our children to be an



Attendance Hero:

**Here
Everyday
Ready
On time**



Target 96%

Every day counts!

6C 99.64%, 3B 98.67%, R2 97.78%, 4T 96.82%, 5C2 94.83%, 1D 94.09%, 2M 94%, 3R 93%, R1 92.94%, 1A 92.5%, 6H 92.41%, 5C1 91.95%, 4G 91.36%, 4C 90.53%, 2D 89%

*If your child is not well enough to attend school please report this by phoning the Office on 01473 601402 option 1 from 7.30am. We **MUST** receive this information by 8.45am*

Please support us in reducing the number of school days lost.

A day off school means a day where learning is lost.



**STUDY
SMART**
Free Online Courses



ncfe. | cache



**Education & Skills
Funding Agency**

Fully Funded School Support Course

www.studysmartuk.online

**Next Start date
30th September**

CACHE Certificate in Understanding
Safeguarding & Prevent
CACHE Certificate in
Understanding Challenging Behaviours
CACHE Certificate in the
Principles of SEN
Levels 1, 2 & 3

**Six Week
Course**

Mon - Fri

9:30 - 11:30am

12:30 - 2:30pm

4 - 4:30pm

**(last optional session for
reflection and support if needed)**



Apply for a secondary school place 2025/2026

All details can be found here:

[Apply for a secondary school place 2025/2026 -
Suffolk County Council](#)

We would like you to encourage all parents/carers (except those with a child who has an EHC plan, as above) to make their applications online for a school place in the normal year of entry at www.suffolk.gov.uk/admissions from 12 September 2024 and by the closing date of **Thursday 31 October 2024**.



Pupil premium and free school meals

If your child is eligible for 'free school meals' and you register them for this, we'll receive extra funding called 'pupil premium'. We use this extra money to improve the educational provision and resources at the school.

What is pupil premium funding?

Pupil premium funding from the government is given to schools to help pupils reach their full potential, regardless of their background or financial situation. It's provided for pupils who:

- Are registered for free school meals
- Have been registered for free school meals at any point in the past 6 years • Are, or have been, in care
- Have parents in the armed forces

At Hillside Primary School, we get an extra [£1,455 (for primary schools) for every eligible pupil who is registered for free school meals. This extra money could make a real difference to the quality of education we offer.

For example, we've previously used pupil premium funding for:

- Educational provision/resources
- Academic interventions
- Wellbeing and self-esteem building interventions

Is my child eligible for free school meals?

Your child might be eligible if you access:

- Income Support
- Income-based Jobseeker's Allowance or Income-related Employment and Support Allowance Support under part VI of the Immigration and Asylum Act 1999
- The guaranteed element of Pension Credit
- Child Tax Credit (provided you're not also entitled to Working Tax Credit and have an annual gross income of no more than £16,190)
- Working Tax Credit.in-on
- Universal Credit, provided you have an annual net earned income not exceeding £7,400 (£616.67 per month)





Your child might also be eligible if you're in a household with no recourse to public funds (NRPF), subject to a maximum income threshold. This is for children of:

- Zambrano and Chen carers (non-EEA nationals caring for a British citizen residing in the UK)
- British National (Overseas) passport holders
- Spousal visa, work visa, or student visa holders
- Those with no immigration status
- Families with a right to remain in the UK under Article 8 of the European Convention of Human Rights
- Families receiving support under Section 17 of the Children Act 1989 who are subject to a no recourse to public funds restriction
- Certain failed asylum seekers supported under Section 4 of the Immigration and Asylum Act 1999

Universal infant free school meals

Currently, pupils in reception, year 1 and year 2 are entitled to a free school meal thanks to a different government funding scheme known as universal infant free school meals (UIFSM). You shouldn't confuse UIFSM with free school meals and the pupil premium.

If your child is in reception, year 1 or year 2 and is eligible for free school meals according to the criteria above, you should still register because we'll receive the extra pupil premium funding.

Does my child have to eat the free school meals?

No. Pupils who are registered for free school meals don't have to eat them. If you're eligible but you want your child to have packed lunches you should still register because the school will receive the funding which can support your child in other ways.

How do I register?

You only need to register once at the school.

To find out if you are eligible for free school meals, please visit <https://suffolkone.capitaone.cloud/CitizenPortal/en>

Please note, if your child is already registered and eligible there is no need to re-apply.

More information

For more information about pupil premium go to our website, which contains details of how the pupil premium has been spent in the past academic year and how it will be spent this year.

If you have any questions or specific concerns, please contact the school office.



Year 6 Residential Information Session

Friday 21.9.24
3:15pm
Lower Hall

This year we will be taking Year 6 to Norfolk for a 2 nights/3 days stay at Hilltop; an outdoor thrill-seeking adventure centre! Dates are Wednesday 25th – Friday 27th June 2025.

A fantastic residential tried and tested with staff and children; this is one they won't want to miss!

Please come along to find out more about the activities, costs and what each day will be like for the children!





Diary Dates for Autumn 1

Thursday 26th September – Maths course for parents from 9am – All Years

Thursday 26th September – European Day of Languages – Activities within school to inspire the children to love languages

Monday 30th September – Kindness challenges launched

WB 7th October – 4T Learning Conversations (more details to follow)

22nd October and 24th October – Learning Conversations (more details to follow)

Friday 25th October – Last day of the half term

Hillside School Dates 2024-2025

September 2024	October 2024	November 2024	December 2024
M Tu W Th F Sa Su 1 2 3 4 5 6 7 8 9 10 11 12 13 14 15 16 17 18 19 20 21 22 23 24 25 26 27 28 29 30	M Tu W Th F Sa Su 1 2 3 4 5 6 7 8 9 10 11 12 13 14 15 16 17 18 19 20 21 22 23 24 25 26 27 28 29 30 31	M Tu W Th F Sa Su 1 2 3 4 5 6 7 8 9 10 11 12 13 14 15 16 17 18 19 20 21 22 23 24 25 26 27 28 29 30	M Tu W Th F Sa Su 1 2 3 4 5 6 7 8 9 10 11 12 13 14 15 16 17 18 19 20 21 22 23 24 25 26 27 28 29 30 31
January 2025	February 2025	March 2025	April 2025
M Tu W Th F Sa Su 1 2 3 4 5 6 7 8 9 10 11 12 13 14 15 16 17 18 19 20 21 22 23 24 25 26 27 28 29 30 31	M Tu W Th F Sa Su 1 2 3 4 5 6 7 8 9 10 11 12 13 14 15 16 17 18 19 20 21 22 23 24 25 26 27 28	M Tu W Th F Sa Su 1 2 3 4 5 6 7 8 9 10 11 12 13 14 15 16 17 18 19 20 21 22 23 24 25 26 27 28 29 30 31	M Tu W Th F Sa Su 1 2 3 4 5 6 7 8 9 10 11 12 13 14 15 16 17 18 19 20 21 22 23 24 25 26 27 28 29 30
May 2025	June 2025	July 2025	August 2025
M Tu W Th F Sa Su 1 2 3 4 5 6 7 8 9 10 11 12 13 14 15 16 17 18 19 20 21 22 23 24 25 26 27 28 29 30 31	M Tu W Th F Sa Su 1 2 3 4 5 6 7 8 9 10 11 12 13 14 15 16 17 18 19 20 21 22 23 24 25 26 27 28 29 30	M Tu W Th F Sa Su 1 2 3 4 5 6 7 8 9 10 11 12 13 14 15 16 17 18 19 20 21 22 23 24 25 26 27 28 29 30 31	M Tu W Th F Sa Su 1 2 3 4 5 6 7 8 9 10 11 12 13 14 15 16 17 18 19 20 21 22 23 24 25 26 27 28 29 30 31

Legend:
■ Staff training days – school closed
■ School holiday closures
■ Bank Holidays