



## TUTOR STAR OF THE WEEK

# ★ WINNERS ★



Week beginning 6th January 2026

### YEAR 7

Daisy W-B  
7P2

### YEAR 8

Harvey N  
8O2

### YEAR 9

Theo B  
9P3

### YEAR 10

Kadie W  
10A2

### YEAR 11

Bruce McC  
11PB

Each winner is chosen at random. Winners will each receive a front of the queue pass, with a plus one for a friend!

"EVERYONE EXCELS EVERYDAY"



## PUPIL SHOUTOUTS



CONGRATULATIONS TO THE FOLLOWING PUPILS

	PUPIL	REASON
YEAR 7	Amelia B (7O3)	Amazing effort in Art! ( Miss Siddle)
YEAR 8	Mahek Q (8S2)	An absolutely, amazing attitude to work. The work and effort you have been putting in to your History studies has been incredible. Keep it up! (Miss Sweeney)
YEAR 9	Rosie B (9S1)	You are a fearless rugby player, the tackles you were executing during the match play in lessons were simply outstanding, 100% commitment in grounding your opponents, great work.(Mrs Warriner)
YEAR 10	Harry HC (10P1)	Every single day you come in smiling, looking absolutely pristine! You start my day off the right way and always take the time to say "Good Morning". Thank you for always being so happy and smiley! (Mrs E Robinson)
YEAR 11	Daisy F (11JS)	Well done for showing great resilience - your hard work is paying off. (Ms Inman)

★ "EVERYONE EXCELS EVERYDAY"



**We're excited to let you know that a new outdoor canopy will soon be installed on site!**

This will give pupils a covered outdoor space to:

- Get some fresh air.
- Take shelter from rain or strong sun.
- Relax and socialise in a comfortable environment.

**It's a great new addition, designed to make breaktimes and free periods more enjoyable, whatever the weather.**

We can't wait for you to start using it!

# PHOTOGRAPHY COMPETITION

## THEME: WINTER

**CAPTURE THE BEAUTY, MAGIC AND ESSENCE OF WINTER IN A SINGLE PHOTOGRAPH!**

**SHOWCASE YOUR CREATIVITY BY ENTERING ONE PHOTOGRAPH ON THE THEME WINTER.**

**THE TOP 3 WINNING PHOTOGRAPHS WILL FEATURE IN THE 2027 CALENDAR**

### Prizes

**1st** 100 RISE points    **2nd** 75 RISE points    **3rd** 50 RISE points  
5 RISE points for all entries

**Safety: when out and about taking photographs, take a friend and be aware of your surroundings**



**ENTRY DEADLINE:  
27TH FEBRUARY**

Send entries to:  
[artcompetitions@hollingworthacademy.co.uk](mailto:artcompetitions@hollingworthacademy.co.uk)  
with your name, tutor and some details about the photograph...where it was taken and what you like about it.



# ART COMPETITION

# 2026

## YEAR OF THE HORSE

LET'S CELEBRATE THE LUNAR NEW YEAR 2026 WITH ART!

**ENTRY DEADLINE:  
6TH FEBRUARY**

Hand original artwork to your art teacher or Miss Lewis

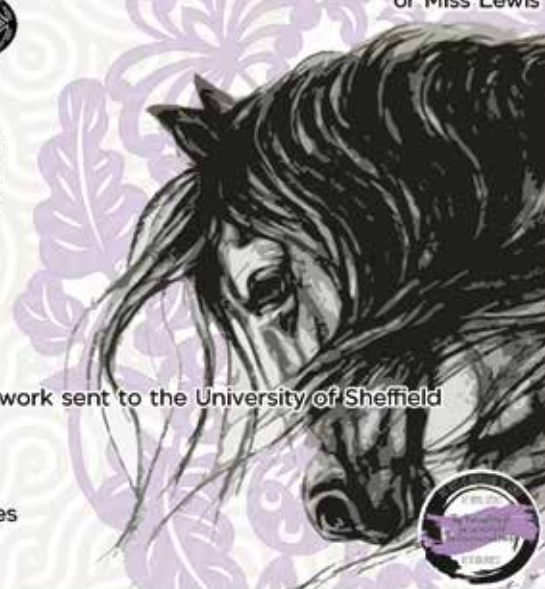
### THEME: YEAR OF THE HORSE

**YOUR ARTWORK NEEDS TO BE A3 SIZE (SEE MISS LEWIS IN THE WORK ROOM IF YOU NEED PAPER). YOU CAN USE ANY MEDIUM, PEN, PENCIL, PAINT, WATERCOLOUR OR COLOURED PENCIL. INTERPRET THE HORSE IN TRADITIONAL, MODERN, MYTHICAL, OR CROSS-CULTURAL WAYS. AUSPICIOUS SYMBOLS AND GREETINGS MAY ALSO BE INCLUDED**

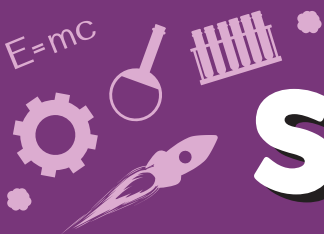
### Prizes

**1st** 100 RISE points & art work sent to the University of Sheffield  
**2nd** 75 RISE points  
**3rd** 50 RISE points  
5 RISE points for all entries

NO DIGITAL ARTWORK  
NO 3D MODELS OR SCULPTURE



$E=mc^2$



# STEM CLUB

Join us in **Science Club** 3:15pm - 4.00pm

Please collect a letter from the Science work room and sign up on Arbor by the 25th January 2026.

SESSION	1	2	3		4	5	6
DATE	Monday 26 <sup>th</sup> January	Monday 2 <sup>nd</sup> February	Monday 9 <sup>th</sup> February	HALF TERM	Monday 23 <sup>rd</sup> February	Monday 2 <sup>nd</sup> March	Monday 9 <sup>th</sup> March



**ONLY 20 PLACES AVAILABLE!**



## KS3 SPANISH CLUB

If you enjoy learning Spanish and would like to have fun practising it, come along to **Spanish Club** with our Languages Assistant, Elena!

**EVERYONE IS WELCOME!**

Room 002 | Thursdays



Thursday - All Year Groups  
Room 038 - 3.10pm - 4.00pm



SPORTS HALL  
YEARS 7, 8, 9 & 10





Tuesday - 3.15pm - 4.15pm

Room 205 | All Year Groups  
See Mr Jaffray for more info



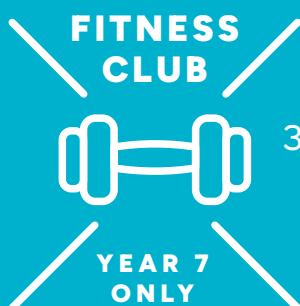
## BRASS GROUP

All Year Groups  
Tuesday – Before School  
Mr Holt – Room 011

*(Pupils need to bring their own instrument)*

## VOCAL GROUP

ALL YEAR GROUPS  
Wednesday - 3.10 - 4.00pm  
Mr Keeley - Room 004



Monday  
3.10pm - 4.00pm  
Fitness Suite  
Miss Dignan



## DUNGEONS & DRAGONS CLUB

THURSDAY

3.10PM - 4.10PM | ROOM 113  
ALL YEAR GROUPS

## HOMEWORK CLUBS

### BEFORE SCHOOL (LRC)

(All Year groups)  
Monday, Tuesday, Wednesday,  
Thursday & Friday  
8.15am - 8.40am

### AFTER SCHOOL (LRC)

(All Year groups)  
Monday, Tuesday, Wednesday  
& Thursday  
3.10pm - 3.50pm

### SEND HOMEWORK CLUB (ROOM 112)

(All Year groups)  
Monday, Tuesday, Wednesday,  
Thursday & Friday  
3.10pm - 3.40pm



## ROCK BAND

Monday - All Year Groups  
Mr Vezer - Room 011 - 3.10 - 4.00pm

# SPRING TERM

## EXTRACURRICULAR ACTIVITIES AND INTERVENTIONS

	SUBJECT / ACTIVITY	YEAR GROUP	START / END	TIME	STAFF (LOCATION)
MON	BEFORE SCHOOL HOMEWORK CLUB	All	Ongoing	8.15am – 8.40am	Ms Wood & Mrs Gibson
	RAYZ ALL STAR CHEERLEADING (SUBSCRIPTIVE)	Limited Nos – 20 Places	January 2026 onwards	3.10pm – 4.00pm	External professional - Theatre
	ROCK BAND	All	Ongoing	3.10pm – 4.00pm	Mr Vezar – 011
	EVENT HAIR MASTERCLASS (SUBSCRIPTIVE)	Limited Nos – 10 Places	2 <sup>nd</sup> , 9 <sup>th</sup> , 23 <sup>rd</sup> February 2026	3.10pm – 4.00pm	External professional – The Salon
	STEM (SCIENCE) CLUB	7, 8, 9 (Limited Nos)	26 <sup>th</sup> January – 9 <sup>th</sup> March 2026	3.10pm – 4.00pm	Mr Cope – Room 124
	AFTER SCHOOL HOMEWORK CLUB (+SEND)	All	Ongoing	3.10pm – 3.50pm	Ms McKeon - LRC
	DODGEBALL	7, 8, 9, 10	8 <sup>th</sup> September 2025 onwards	3.05pm – 4.00pm	Miss Phillips – Sports Hall
TUE	BEFORE SCHOOL HOMEWORK CLUB	All	Ongoing	8.15am – 8.40 am	Ms Wood & Mrs Gibson
	BRASS & WOODWIND GROUP	All	Ongoing	Before School	Mr Holt - 011
	DEBATE CLUB	All	Ongoing	3.15pm – 4.15pm	Mr Jaffray - 205
	PHOTOGRAPHY CLUB (SUBSCRIPTIVE)	Limited Nos – 15 Places	January 2026 onwards	3.10pm – 4.00pm	External professional – Room 227/228
	BOYS BADMINTON	All	Ongoing	3.10pm – 4.00pm	Mr Gill – Sports Hall
	SEND MULTI-SPORT	All	Ongoing	3.10pm – 4.00pm	Miss Phillips – 212/Futures Hub
	FOOTBALL (NON-TEAM)	9 & 10	Ongoing	3.10pm – 4.00pm	Mr Maddison - Astro
	BTEC HEALTH & SOCIAL CARE INTERVENTION	11	Ongoing	3.10pm – 4.00pm	Mr Mannion – Room 138
	AFTER SCHOOL HOMEWORK CLUB (+SEND)	All	Ongoing	3.10pm – 3.50pm	LPA - LRC
WED	BEFORE SCHOOL HOMEWORK CLUB	All	Ongoing	8.15am – 8.40am	Ms Wood & Mrs Gibson
	URDU CLUB	7, 11	1 <sup>st</sup> October 2025 onwards	3.10pm – 4.10pm	Mrs Zaman - 001
	ARTS & CRAFTS (SUBSCRIPTIVE)	Limited Nos – 15 Places	January 2026 onwards	3.10pm – 4.00pm	External professional – Room 234
	SPORTS LEADERS	10	Ongoing	3.10pm – 4.00pm	Mrs Thomas – Sports Hall
	CREATIVE WRITING CLUB (FORTNIGHTLY)	7, 8, 9, 10	14 <sup>th</sup> & 28 <sup>th</sup> January 11 <sup>th</sup> & 25 <sup>th</sup> February 11 <sup>th</sup> & 25 <sup>th</sup> March 2026	3.10pm – 4.00pm	Miss Talks – Room 210
	BTEC HEALTH & SOCIAL CARE INTERVENTION	11	Ongoing	3.10pm – 4.00pm	Mrs Warriner – Room 203
	Y11 MATHS INTERVENTION SESSIONS (Invite only)	11	17 <sup>th</sup> September 2025 onwards	3.10pm – 4.00pm	Mrs Chadderton - 110
	REVISION DROP-IN SESSIONS	10, 11	10 <sup>th</sup> September – 17 <sup>th</sup> December 2025	3.10pm – 3.40pm	Miss Phillips - 212
	VOCAL GROUP	All	Ongoing	3.10pm – 4.00pm	Mr Keeley - 004
	AFTER SCHOOL HOMEWORK CLUB (+SEND)	All	Ongoing	3.10pm – 3.50pm	LPA - LRC
THU	BEFORE SCHOOL HOMEWORK CLUB	All	Ongoing	8.15am – 8.40am	Ms Wood & Mrs Gibson
	DRAMA CLUB	All	Ongoing	3.10pm – 4.00pm	Miss Cowley-Demetri – 038
	URDU CLUB	8, 9, 10	1 <sup>st</sup> October 2025 onwards	3.10pm – 4.10pm	Mrs Zaman - 001
	TEAM TRAMPOLINING	7, 8, 9 & 10	Ongoing	3.10pm – 4.00pm	Mrs Thomas – Sports Hall
	BRITISH SIGN LANGUAGE (SUBSCRIPTIVE)	Limited Nos – 20 Places	January onwards	3.10pm – 4.00pm	External professional – Room 001
	GIRLS FOOTBALL	7, 8, 9 & 10	22 <sup>nd</sup> January 2026 onwards	3.10pm – 4.00pm	Mrs Warriner – Sports Hall
	EVENT HAIR MASTERCLASS (SUBSCRIPTIVE)	Limited Nos – 10 Places	15 <sup>th</sup> , 22 <sup>nd</sup> , 29 <sup>th</sup> January 2026	3.10pm – 4.00pm	External professional – The Salon
	BTEC PE INTERVENTION	11	Ongoing	3.10pm – 4.00pm	Mr Maddison – Room 139
	KS3 SPANISH CLUB	7, 8 & 9	22 <sup>nd</sup> January 2026 onwards	3.10pm – 4.00pm	Ms Gutierrez Ruiz – Room 002
	HISTORY REVISION	10	11 <sup>th</sup> September 2025 onwards	3.10pm – 3.40pm	Miss Sweeney – Room 223
	AFTER SCHOOL HOMEWORK CLUB (+SEND)	All	Ongoing	3.10pm – 3.50pm	LPA - LRC
	DUNGEONS & DRAGONS CLUB	All	Ongoing	3.10pm – 4.00pm	Mr Pryce - 113
FRI	BEFORE SCHOOL HOMEWORK CLUB	All	Ongoing	8.15am – 8.40 am	Ms Wood & Mrs Gibson
	SEND HOMEWORK CLUB	All	Ongoing	3.10pm – 3.40pm	LPA's & SEND Support - 112





**FOOD  
WASTE  
ONLY**

*The 3 tray collection stations  
in the dining area now display  
this sign.*

## Food Waste Disposal in the Dining Area

- **Food waste** only goes in the bins with **green compostable liners**.
- **Drink cartons and all other packaging** should be thrown away in the **large dustbins** placed around the dining area.

**Thank you**

19-01-26	MON	TUE	WED	THU	FRI
<b>MAIN</b>	CHICKEN MADRAS CURRY WITH RICE (GF) AND WARM NAAN (H)	COTTAGE PIE (GF) (H)	BEEF BURGER WITH ROAST ONIONS (H)	PIRI PIRI CHICKEN (H) (GF)	MEAT AND POTATO PIE (H)
<b>MAIN</b>	GRILLED LINCOLNSHIRE SAUSAGES	ROAST PORK WITH CRACKLING (GF)	LAMB ROGAN JOSH (H) (GF)		COD FISH FINGERS SERVED WITH FRESH LEMON (GF)
<b>VEGETARIAN</b>	QUORN CHILLI TACO (V) (VE)	SOFT BEAN BURRITO (V)	PASTA ARRIBIATA (V) (VE)	PIZZA MARGHERITA (V)	MAC AND CHEESE (V)
<b>SIDES</b>	HASH BROWNS PETIT POIS	ROAST POTATOES BUTTERED CARROTS	SAUTE POTATOES PEAS AND SWEETCORN	POTATO WEDGES BOK CHOI STIR FRY	CHIPPED POTATOES CHIP SHOP STYLE MUSHY PEAS
<b>PUDDING</b>	MARBLE CAKE	VANILLA SHORTCAKE (VE)	CORNFLAKE TART (VE)	CHOC CHIP SPONGE	APPLE AND RHUBARB CRUMBLE (VE)
<b>EXPRESS</b>	SOUTHERN FRIED CHICKEN BURGER (H) SWEET & SOUR CHICKEN TORTILLA (H) JACKET POTATO (V) (VE) (GF)	DEEP DISH FOUR CHEESE PIZZA (V) TANDOORI CHICKEN TORTILLA (H) JACKET POTATO (V) (VE) (GF)	CHICKEN FILLET SANDWICH (H) CHICKEN TIKKA MASALA TORTILLA (H) JACKET POTATO (V) (VE) (GF)	BAKED HAM AND CHEESE, OR JUST CHEESE PANINI CHICKEN KATSU TORTILLA (H) JACKET POTATO (V) (VE) (GF)	HOT AND SPICY CHICKEN BARM (H) CHICKEN FAJITA TORTILLA (H) JACKET POTATO (V) (VE) (GF)






(H) HALAL (GF) GLUTEN FREE (V) VEGETARIAN (VE) VEGAN PLEASE NOTE: THIS MENU IS SUBJECT TO CHANGE  
FOOD ALLERGIES: Please speak to a member of our serving team about the ingredients in your meal, before placing your order. Thank you.

**"EVERYONE EXCELS EVERYDAY"**



**NEED TO  
TALK?**

# **FOR CONFIDENTIAL HELP AND SUPPORT FOR YOUR EMOTIONAL HEALTH AND WELLBEING YOU CAN CONTACT:**

-  Your Head of Year / Form Tutor
-  DSL: Mrs Robinson
-  DDSL & Mental Health Leader: Mr Harwood
-  DDSL: Mrs Jabeen, Mrs Johnson and Mrs Murray
-  E-mail: [dsl@hollingworthacademy.co.uk](mailto:dsl@hollingworthacademy.co.uk)

**SUPPORT AND ADVICE IS  
ALSO AVAILABLE ONLINE  
IF YOU NEED HELP OR  
SOMEONE TO TALK TO.**



-  #Thrive –  
[www.healthyyoungmindspennine.nhs.uk/thrive](http://www.healthyyoungmindspennine.nhs.uk/thrive)
-  Kooth.com – [www.kooth.com](http://www.kooth.com)
-  Young Minds – [www.youngminds.org.uk](http://www.youngminds.org.uk)
-  Chat Health – text 0750 733 0382
-  NSPCC – [www.nspcc.org.uk](http://www.nspcc.org.uk)



# ATTENDANCE

## Very Good 96%+

With this level of attendance you have given yourself the best possible chance of fulfilling your academic potential. Good attendance also appeals to colleges, universities and employers as it informs them you are dedicated and reliable.

## Below Target 94 - 95%

With this level of absence, your grades will have already started to suffer. You will have missed some important information in lessons and need to catch up! The academy will be reviewing your absence level closely and may already be taking steps to ensure that it improves.

## Not Good Enough 90 - 94%

Your chances of success are definitely at risk. If you have been ill, the academy will support you in doing the extra work needed to catch up. It is likely that if you have patterns of unexplained absences, the academy will already be taking steps to ensure your attendance improves. This might include working with other agencies to support your family in helping you to improve your attendance or even taking court action. You will be expected to attend a meeting with the Attendance Manager and Progress Leader to discuss your attendance.

## Unacceptable 89% and below

Your attendance is a very serious concern. You are now classed as a persistent absentee and will already be working with the academy to make sure your attendance improves. Continued absence will likely mean fines and court action. You will be referred to the Local Authority for a fast track to prosecution.



# PUNCTUALITY

At Hollingworth Academy we feel that punctuality is essential for three reasons:

- No pupil can afford to miss any part of a lesson, as this does not help the understanding of a subject.
- A pupil entering a lesson late could disrupt the learning of others.
- Punctuality records are always requested on references.

Due to the number of pupils arriving late after 8.40am, without a reason, a change to the system has been put into place.

***Any pupil arriving after 8:40am will sign in at reception and be issued with a same day lunchtime detention.***

***Failure to attend a lunchtime detention will result in a whole day link room placement meaning that you will miss both your break, lunch, 5 lessons and will remain at school until 4pm.***



# MOBILE PHONES

The use of mobile phones is not allowed from the moment pupils enter the building and until they leave the building at either 3.05pm or 3.10pm. They must not be visible, (e.g. put away in bags or blazers) and switched off during the school day. The only exception to this is, if instructed to do so, under supervision, by a member of staff.

If you have your phone confiscated **three** times, it will not be returned to you and your parent/carer will have to come to school and sign for it.

**WANT TO ADD SOMETHING TO THE BULLETIN?**

Please email: [office@hollingworthacademy.co.uk](mailto:office@hollingworthacademy.co.uk)

**"EVERYONE EXCELS EVERYDAY"**