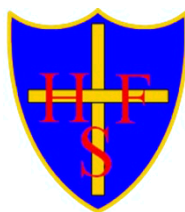




Bishop
Hogarth

Catholic Education Trust



Holy Family Catholic Primary School



Nursery Prospectus

*'Whoever welcomes one of these little children in my name,
welcomes me'*

Mark 9:37

Welcome



Dear Parents and Carers

I am privileged and proud to be the Head Teacher of Holy Family Catholic Primary School, which now incorporates nursery provision for children aged 3 years plus.

Our newly refurbished nursery area and classroom opened in September 2023. We have space for 26 children and we are very excited to expand our thriving school community. Our highly qualified and experienced staff are committed to providing a learning environment that will encourage children to explore, learn and grow. We recognise each child as a unique and special gift from God and cannot wait to nurture and enhance their early childhood experiences.

At Holy Family, we are blessed with some lovely outdoor areas. We have extensive playground space with fabulous play equipment and a dedicated EYFS outdoor learning area. The children's outdoor learning will also be enhanced further in our school garden, woodland area and large field.

I hope you will find this information useful. If you do have any questions, please do not hesitate to contact us, we are always happy to help with any enquiries.

Mrs J Weatherall
Head Teacher

Contents

Welcome	2
Our Mission Statement & Vision	4
Holy Family Nursery	5
Nursery Curriculum	7
Nursery Uniform	9
Wrap Around Care Clubs	10
Communication With Families	11
SEND & Safeguarding	12
How To Apply	13
Bishop Hogarth Catholic Education Trust	15



Our Mission Statement & Vision

Mission Statement

'Seeing Christ In Ourselves and Others'

Holy Family School aims to encourage all children to see Christ in themselves and others in a caring environment, which allows them the opportunities to develop to their full potential.

School Vision

'Our Vision is a school where children are nurtured, inspired, excel and are proud of their achievements.'

In Holy Family School, we nurture the development of every child in a happy, caring and stimulating environment. We believe every child should have the best start in life and acquire these core abilities to read, to write, to be competent mathematicians and to be effective communicators.

Through excellence in teaching, we provide an enriching curriculum that engages our pupils, provides a diverse range of invaluable learning experiences and harnesses the use of technology to enhance their development.

Our pupils are inspired to learn, to reach their potential and to be proud of their achievements. We encourage each and every one of them to become independent, resilient and collaborative learners. As our pupils move through the school, they grow spiritually, emotionally and academically to become confident young people, who use their knowledge, skills and talents for the good of both themselves and others. We value our partnerships with parents and carers, parish, other schools, the wider community and we welcome their contribution to realising our vision.





Holy Family Nursery

Holy Family Nursery offers both funded and paid nursery places to children aged 3 years old. Children will be eligible to start nursery in the term after their 3rd Birthday.

In line with Government guidelines, children aged 3 years old are entitled to 15 hours free nursery provision each week. Some families may also be entitled to 30 hours. For more detailed information, please see the following link:-

<https://www.darlington.gov.uk/education-and-learning/early-years-and-childcare/free-early-education-sessions/>

The Nursery has a very experienced Teacher and highly qualified Teaching Assistant. It is open term time only, during the following hours.

Morning sessions are – 9.30 am until 12.30 pm (including lunchtime)

Afternoon sessions are - 12.30 pm until 3.30 pm

All day sessions are - 9.30 am until 3.30 pm

If you would like your child to attend nursery from 8.45 am, we also offer optional Extended Nursery Hours from 8.45 am until 9.30 am for an additional charge of £4.00 per day. Therefore, a full day (incorporating the optional Extended Nursery Hours) would be 8.45 am until 3.30 pm.

Sessions and days can be mixed to meet the needs of families, although depending on your entitlement, additional paid nursery hours may also be available, charged at £15.00 per morning session and £15.00 per afternoon session. These are subject to availability.

Children staying for lunch will need to bring a packed lunch from home or can have a nursery meal charged at £2.75 per child per day.



Nursery Curriculum

The Early Years Foundation Stage Curriculum is split into 7 areas of learning, with 3 prime areas:

- ★ **Communication and Language**
- ★ **Personal, Social and Emotional Development**
- ★ **Physical Development**
- ★ Literacy
- ★ Mathematics
- ★ Understanding The World
- ★ Expressive Arts & Design



'The development of children's spoken language underpins all seven areas of learning and development.'

Early Years Foundation Stage Curriculum 2021

Our vision is to provide an environment which enables learning and enhances a child's natural curiosity. We aim to provide learning opportunities to engage a child's instincts to explore.

We will nurture a child's interests and develop them further to help their concentration and harness their motivation through purposeful and inspiring play. One of the biggest aims of our whole curriculum is to develop a pupil's communication, language and vocabulary skills, through high quality interactions with knowledgeable staff.

The curriculum is designed to help children continuously make links between experiences and what they have learnt. This helps to create a web of knowledge that will form the foundations that they will build on throughout their lives.

As children grow and develop they will learn and remember more. Staff in Holy Family Nursery are trained in using 'Tales Toolkit' which is designed to harness a child's imagination and broaden their vocabulary. This is an EEF (Education, Endowment Fund) recognised programme to support children in early years.

We recognise the importance of physical activity in early childhood and make use of our extensive grounds to help pupils develop gross motor skills. Alongside this, we provide a range of learning opportunities to develop fine motor skills to prepare the children for the next steps in their education.

We also place an emphasis on developing self-help and independence skills, as we believe these contribute to the children becoming responsible members of the school community in the next stages of their education.





Nursery Uniform

We do encourage nursery children to wear uniform. This is a place for children to explore their natural curiosity and they will get messy! We do like the children to also feel part of our whole school community and although the nursery classroom has its own dedicated area, the children are a very much part of Holy Family School.

Our uniform consists of:-

- ★ Grey Trousers
- ★ Grey Skirt
(Children in nursery may also wear navy jogging bottoms or leggings)
- ★ Royal Blue Sweatshirt
- ★ Royal Blue Cardigan
- ★ Light Blue Polo Shirt
- ★ Black Shoes

- ★ Drawstring Bag containing a change of clothes – this will hang on a child's coat peg.

- ★ Wellington Boots – we would like these to remain in nursery for outdoor learning.

Please put names in everything – coats, hats, gloves, uniform, shoes, wellingtons, spare clothing, bags etc.



Wrap Around Care Clubs

In addition to the nursery sessions, we are also able to offer wrap around care clubs, subject to availability.

The Sunrise Breakfast Club is available from
7.45 am until 8.45 am
at a cost of £5.00 per hour.

The Sunset After School Club is available from
3.15 pm until 5.15 pm
at a cost of £5.00 per hour, or part of.

Bookings for both wrap around care clubs are made via My Child At School, our online booking and payment system. All families receive details about how register once their child starts nursery.



Communication with Families

We see parents, carers and family members as our children's primary educators and welcome family involvement. This partnership working also extends to outside agencies and other professionals which may be involved in a child's education.

Our school community uses Class Dojo, a web based programme and App to share class information, messages and pictures of the children's learning. Alongside this online portfolio, the children's nursery learning experience will be documented through floor books and displays which parents and carers will be welcome to come and see at points throughout the year.

We send a weekly newsletter to all school and nursery families by email. The newsletters are also added to the website and Class Dojo.

Other information is available on the school website, www.holyfamily.bhcet.org.uk and posts are added to the school Facebook page [@hollyfamilyprimary](https://www.facebook.com/holyfamilyprimary). Families are welcome to contact the school office with any queries or questions at any time.

Send

At Holy Family, we are committed to supporting the needs of all pupils by providing an inclusive curriculum to ensure that all children are nurtured to reach and achieve their full potential. We aim to provide a supportive environment in order to promote learning, enable personal growth and development.

The individual needs of all children are at the core of the carefully planned curriculum and activities. Fully qualified and experienced Teachers and Teaching Assistants ensure that all pupils are provided with the appropriate level of support alongside their peers. Staff like to develop a close working relationship with children, their families and any supporting outside agencies that may also come into school to support a child's learning and development. The school has links with the Early Years inclusion team and are able to signpost families to external agencies who may offer support.

Safeguarding

Children learn best when they are healthy, safe and secure, when their individual needs are met and when they have positive relationships with the adults caring for them.

The Safeguarding Policy and procedures at Holy Family Catholic Primary School, which includes the Nursery, are in place to ensure children are educated in a welcoming, safe and stimulating environment where children are able to enjoy learning and grow in confidence.





How To Apply

We welcome applications from all families. Application forms are available on the school website or by contacting us. Children are eligible to start a funded nursery place in the September, January or April, following their 3rd birthday.

Applications received for children who are under the age of 3 years old at the time of the application, will be acknowledge upon receipt and their details will be placed on a waiting list until nearer the date of their 3rd birthday.

We must stress that admission to Holy Family Nursery does not guarantee admission to our Reception Class. Nursery children will still need to go through the application process via the Local Authority for a school place. Further information and details of the Holy Family School Admissions Policy is available on the website.

<https://holyfamily.bhcet.org.uk/information/admissions/>

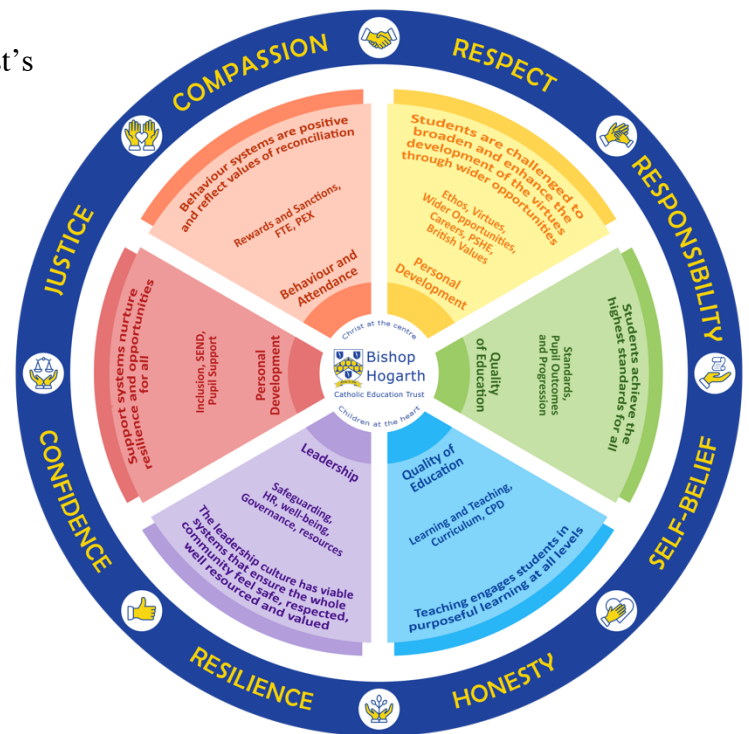


Bishop Hogarth Catholic Education Trust

Holy Family Catholic Primary School is a proud member of the Bishop Hogarth Catholic Education Trust family of schools.

At our core of everything we do are the Trust's Virtues, Vision and Values.

Justice
Compassion
Respect
Responsibility
Self-belief
Honesty
Resilience
Confidence



The aim of Bishop Hogarth Catholic Education Trust is to provide a practical and moral purpose to the furthering of education, giving strength and a collective responsibility for the educational welfare of pupils in our schools.

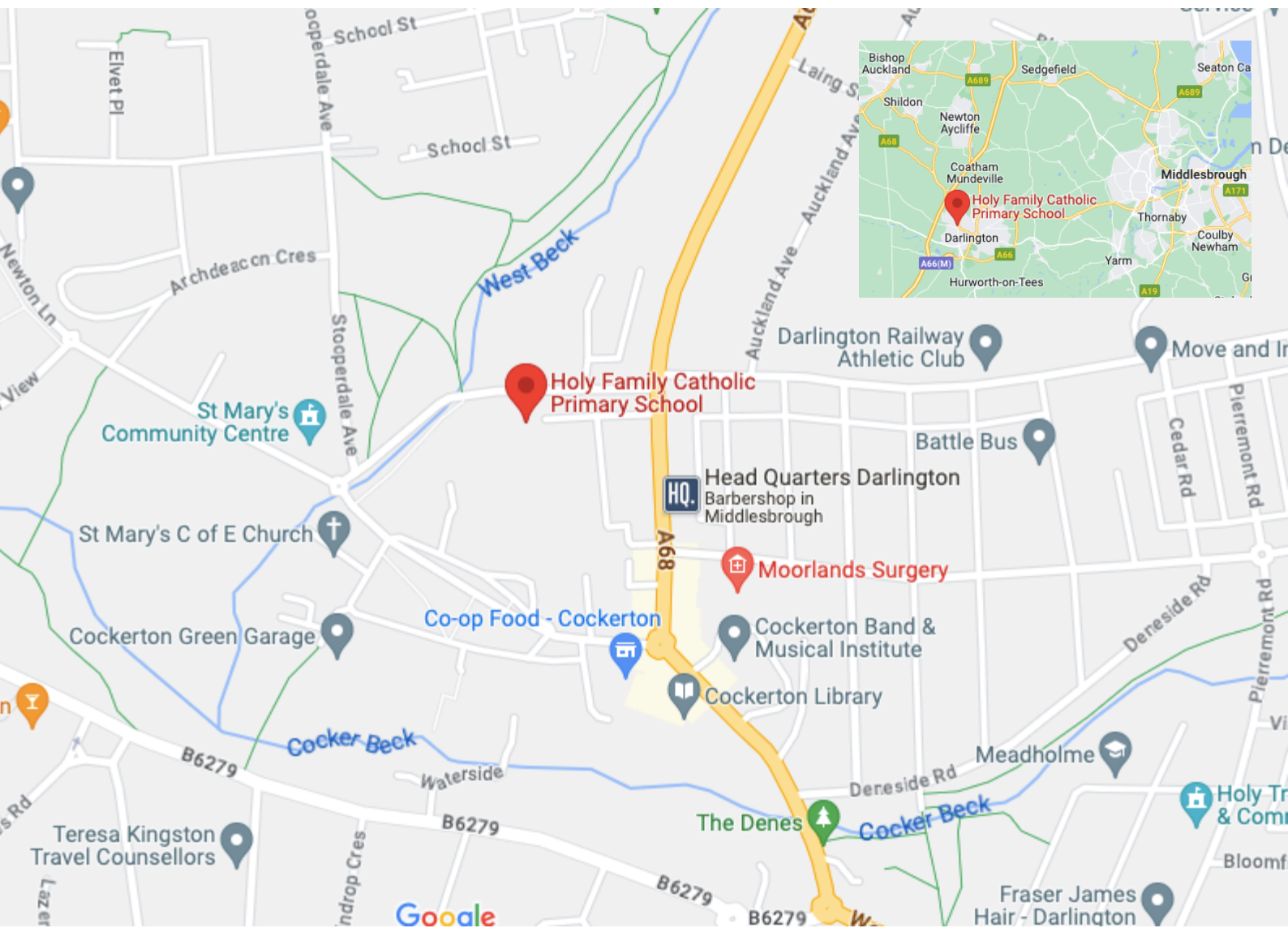
The Trust shapes its collaboration through the fundamental principles of Catholic Social Teaching, where school leaders work together for the common good, where all pupils feel safe, welcomed and supported with every possible opportunity and where staff benefit from a collective approach that respects and values professional agency.

Mr S McGhee
Chief Executive Officer



'Christ at the centre. Children at the heart.'

BHCET



Holy Family Catholic Primary School

Prior Street
Darlington
DL3 9EN



(01325) 380821



admin@holyfamily.bhcet.org.uk



www.holyfamily.bhcet.org.uk



[@holyfamilyprimary](https://www.facebook.com/holyfamilyprimary)



Bishop
Hogarth

Catholic Education Trust