



Sunday 22 November 2020  
Matthew 25:31-46  
Our Lord Jesus Christ, King of the Universe.

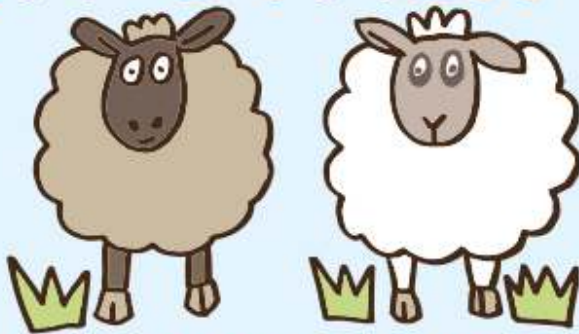
## IN THE GOSPEL TODAY

Jesus says that whenever we are kind to another person we are being kind to him.

My name is \_\_\_\_\_

# LOOK AFTER EACH OTHER

Spot the **five** differences between these sheep.



## Sheep or goat?

Here are some clues which describe sheep and goats.

Can you tell which is which?



My coat is woolly, my tail hangs down, my young are called lambs, and a shepherd looks after me.

I am a \_\_\_\_\_

My coat is hairy, my tail sticks up, my young are called kids, and a goatherd looks after me.

I am a \_\_\_\_\_

Try to draw each one on the back of the sheet!

## Being kind

Jesus says how we can to be kind to others.

Draw lines between the **action** and the **people** who need our help.

Give water to...

Welcome...

Visit...

Give food to...

people who are thirsty



people who are sick



anyone who is hungry

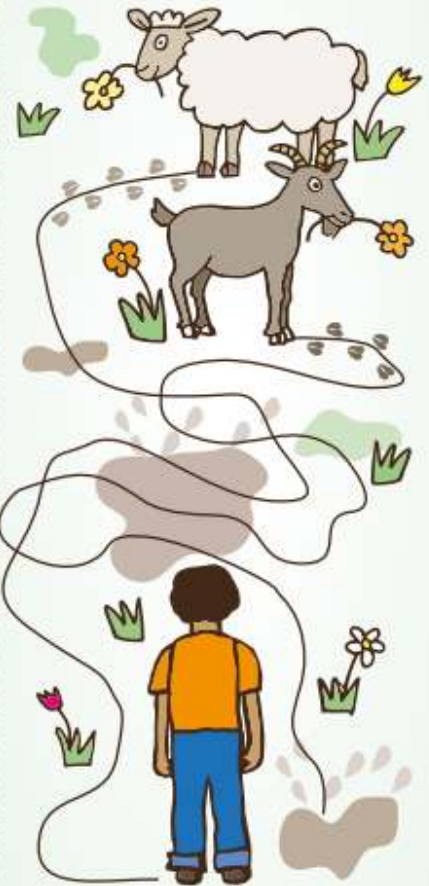


strangers



## Kind or not?

Jesus said that people are like sheep and goats; some are kind and some are not.



Follow the hoof prints to see if this child is a sheep or a goat.

## A PRAYER TO SAY

Father God, you are so good to us. Help us to be as kind as we can be to all the people we meet every day. Amen.