

2020 self-evaluation reports have been calculated using the highest result from either the Centre Assessed Grades or the Exam Board Grades in line with the latest government guidance provided by schools as part of the FFT Results Service. [?](#)

Hope High School

2020 KS4

Overview

KS4 Attainment 2020 · Actual results

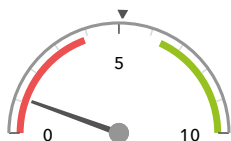
11 pupils

Attainment 8 (Overall) DFE

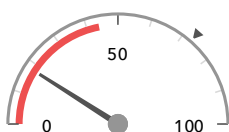
% English & Maths (Grade 4+) DFE

1.1 -

18% -



Significantly below the national average (5.1) ◀



Significantly below the national average (73%) ◀

KS4 Progress 2020 · Value Added

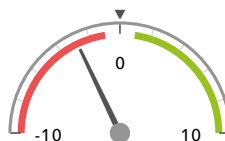
9 matched pupils

Progress 8 (Overall) DFE

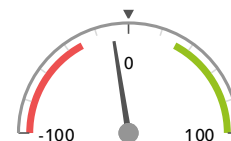
% English & Maths (Grade 4+)

-2.83 -

-10%



Significantly below the national average (0) ◀



In line with the national average (0%) ◀

KS4 higher and lower performing pupil groups 2020

Minimum group size: 10

	Higher performing	Lower performing
Overall achievement pupil progress		
English pupil progress		
Mathematics pupil progress		
Subjects pupil progress		