

# Self-evaluation Summary Dashboard

Produce custom dashboards  
at [fftaspire.org](http://fftaspire.org)

## Hope High School

LA Lancashire DFE 8887104 Produced November 2019

### Reports

- Overview
- Attainment & Progress
- Pupil groups
- Subjects
- Disadvantaged pupils
- Scatterplot
- Context

### What it tells you

- What are the strengths and weaknesses of your school?
- How does attainment and pupil progress at your school compare to the national average?
- How are you performing in different subjects?
- Do you have any under-performing groups of pupils?
- How might the context of your school affect performance?
- How does pupil attendance compare to the national average?

### About the data shown



Filters



Indicators

No filters chosen (all pupils included)

You can use filters to view a subset of pupils

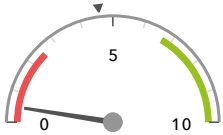
# Overview

## KS4 Attainment 2019 · Actual results

6 pupils

**Attainment 8 (Overall)**

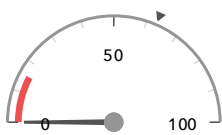
0.5 -



Significantly below the national average (4.6) ◀

**% English & Maths (Grade 4+)**

0% -



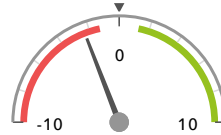
Significantly below the national average (63%) ◀

## KS4 Progress 2019 · Value Added

6 matched pupils

**Progress 8 (Overall)**

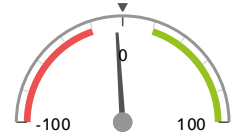
-2.35 -



Significantly below the national average (0) ◀

**% English & Maths (Grade 4+)**

-4%



In line with the national average (0%) ◀

## KS4 higher and lower performing pupil groups 2019

	Higher performing	Lower performing
<b>Overall achievement</b> pupil progress		
<b>English</b> pupil progress		
<b>Mathematics</b> pupil progress		
<b>Subjects</b> pupil progress		

# Attainment & progress

## KS4 Attainment 2019

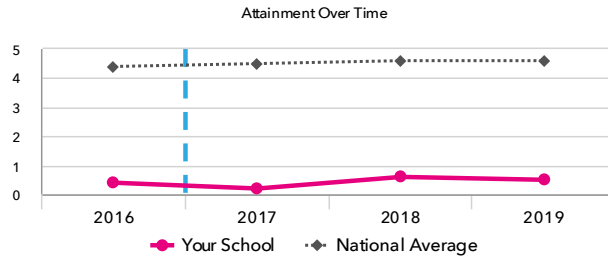
6 pupils

Attainment 8 (Overall)

0.5 -



Significantly below the national average (4.6)

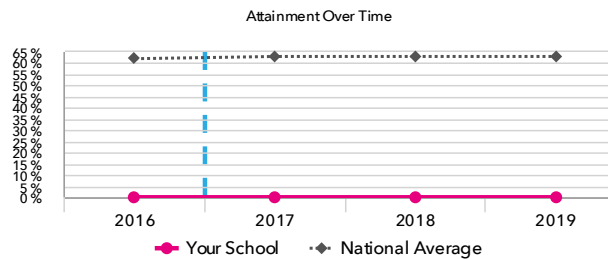


% English & Maths (Grade 4+)

0% -



Significantly below the national average (63%)



## KS4 Progress 2019

6 matched pupils

Progress 8 (Overall)

-2.35 -



Significantly below the national average (0)

% English & Maths (Grade 4+)

-4%



In line with the national average (0%)

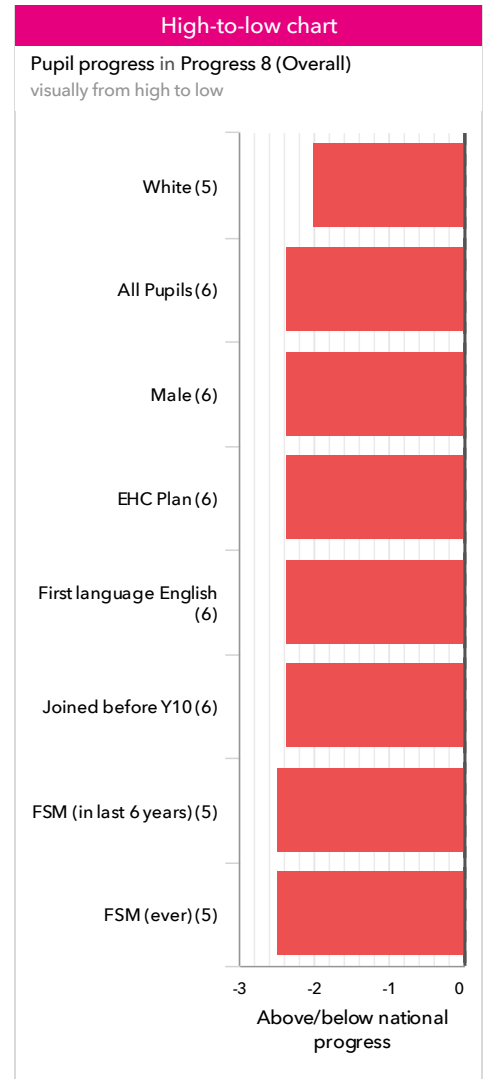
## KS4 performance summary

	Actual results			Pupil progress		
	2017	2018	2019	2017	2018	2019
Number of Pupils / % Matched	7	11	6	100%	91%	100%
Attainment / Progress 8 (Overall)	0.2 <span style="color: red;">-</span>	0.6 <span style="color: red;">-</span> <span style="color: green;">↑</span>	0.5 <span style="color: red;">-</span>	-2.65 <span style="color: red;">-</span>	-2.70 <span style="color: red;">-</span>	-2.35 <span style="color: red;">-</span>
Attainment / Progress 8 (English)	0.1 <span style="color: red;">-</span>	0.7 <span style="color: red;">-</span> <span style="color: green;">↑</span>	0.4 <span style="color: red;">-</span>	-3.00 <span style="color: red;">-</span>	-3.06 <span style="color: red;">-</span>	-2.88 <span style="color: red;">-</span>
Attainment / Progress 8 (Maths)	0.7 <span style="color: red;">-</span>	1.6 <span style="color: red;">-</span>	1.5 <span style="color: red;">-</span>	-1.67 <span style="color: red;">-</span>	-1.20 <span style="color: red;">-</span>	-0.98 <span style="color: red;">-</span>
Attainment / Progress 8 (Ebacc)	0.0	0.0	0.0	-2.29 <span style="color: red;">-</span>	-2.98 <span style="color: red;">-</span>	-2.57 <span style="color: red;">-</span>
Attainment / Progress 8 (Open)	0.0	0.4 <span style="color: red;">-</span>	0.4 <span style="color: red;">-</span>	-3.41 <span style="color: red;">-</span>	-3.17 <span style="color: red;">-</span>	-2.69 <span style="color: red;">-</span>
% English & Maths (Grade 4+)	0% <span style="color: red;">-</span>	0% <span style="color: red;">-</span>	0% <span style="color: red;">-</span>	-5%	-5%	-4%
% English & Maths (Grade 5+)	0%	0% <span style="color: red;">-</span>	0%	-1%	-1%	-1%
% Ebacc (Grade 4+)	0%	0%	0%	-0%	-1%	-0%
% Ebacc (Grade 5+)	0%	0%	0%	-0%	-0%	-0%
% 5+ GCSEs (Grade 7+)	0%	0%	0%	-0%	-0%	-0%
Average entries per pupil	0.6 <span style="color: red;">-</span>	1.6 <span style="color: red;">-</span> <span style="color: green;">↑</span>	1.3 <span style="color: red;">-</span>	-1.7 <span style="color: red;">-</span>	-0.7	-0.4
Average entries per pupil (GCSE only)	0.6 <span style="color: red;">-</span>	1.6 <span style="color: red;">-</span> <span style="color: green;">↑</span>	1.3 <span style="color: red;">-</span>	-1.5 <span style="color: red;">-</span>	-0.4	-0.3
% Pupils taking 3 single sciences	0%	0%	0%	-1%	-2%	-1%

# Pupil groups

## KS4 Pupil groups performance 2019

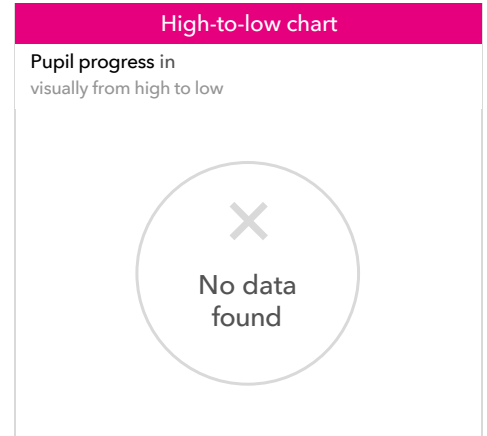
	Pupils	Actual results			Pupil progress			
		Attainment 8 (Overall)	% English & Maths (Grade 4+)	% Ebacc (Grade 4+)	Progress 8 (Overall)	% English & Maths (Grade 4+)	% Ebacc (Grade 4+)	
<b>Summary</b>	All Pupils	6	0.5 <span style="color:red">-</span>	0% <span style="color:red">-</span>	0%	-2.35 <span style="color:red">-</span>	-4%	-0%
<b>Gender</b>	Male	6	0.5 <span style="color:red">-</span>	0% <span style="color:red">-</span>	0%	-2.35 <span style="color:red">-</span>	-4%	-0%
<b>DFE Prior Attainment</b>	Middle attainers	3	0.7	0%	0%	-3.19	-8%	-1%
	Lower attainers	3	0.3	0%	0%	-1.51	-0%	-0%
<b>Pupil Premium</b>	FSM (in last 6 years)	5	0.6 <span style="color:red">-</span>	0%	0%	-2.47 <span style="color:red">-</span>	-5%	-0%
	Not FSM (in last 6 years)	1	0.0	0%	0%	-1.74	-0%	-0%
<b>FSM</b>	FSM	4	0.4	0%	0%	-2.59	-6%	-0%
	Not FSM	2	0.7	0%	0%	-1.87	-1%	-0%
<b>FSM Ever</b>	FSM (ever)	5	0.6 <span style="color:red">-</span>	0%	0%	-2.47 <span style="color:red">-</span>	-5%	-0%
	Not FSM (ever)	1	0.0	0%	0%	-1.74	-0%	-0%
<b>Term of Birth</b>	Spring Term	4	0.4	0%	0%	-2.41	-3%	-0%
	Summer Term	2	0.9	0%	0%	-2.22	-8%	-1%
<b>SEN Group</b>	EHC Plan	6	0.5	0%	0%	-2.35 <span style="color:red">-</span>	-4%	-0%
<b>EAL</b>	First language English	6	0.5 <span style="color:red">-</span>	0% <span style="color:red">-</span>	0%	-2.35 <span style="color:red">-</span>	-4%	-0%
<b>Mobility</b>	Joined before Y10	6	0.5 <span style="color:red">-</span>	0% <span style="color:red">-</span>	0%	-2.35 <span style="color:red">-</span>	-4%	-0%
<b>Ethnicity</b>	White	5	0.6 <span style="color:red">-</span>	0% <span style="color:red">-</span>	0%	-1.99 <span style="color:red">-</span>	-4%	-0%
	Black Caribbean	1	0.0	0%	0%	-4.18	-8%	-1%



# Subjects

## KS4 subject performance 2019

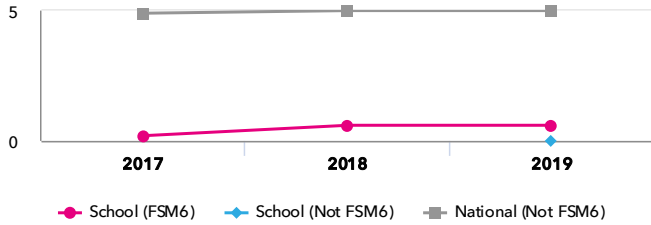
			Actual results			Pupil progress		
		Pupils	Avg Point Score	% Grade 4+	% Grade 7+	Avg Point Score	% Grade 4+	% Grade 7+
<b>English and maths</b>	English Language GCSE	3	1.7	0%	0%	-0.61	-10%	-0%
	Mathematics GCSE	3	3.0	0%	0%	+1.38	-9%	-0%
<b>Other High Value Subjects</b>	Art & Design GCSE	2	4.0	50%	0%	+1.23	+25%	-0%



# Disadvantaged pupils

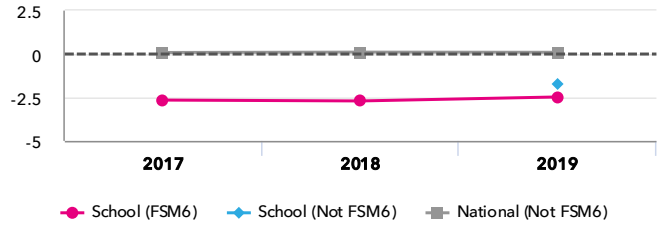
## KS4 attainment for disadvantaged pupils 2019

Attainment 8 (Overall)

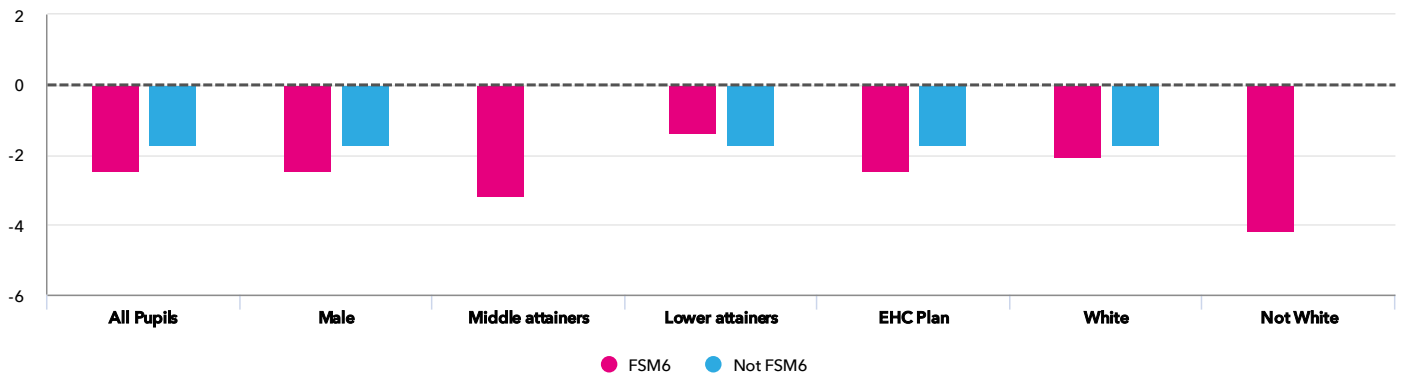


## KS4 progress for disadvantaged pupils 2019

Progress 8 (Overall)



## Progress gap Progress 8 (Overall)

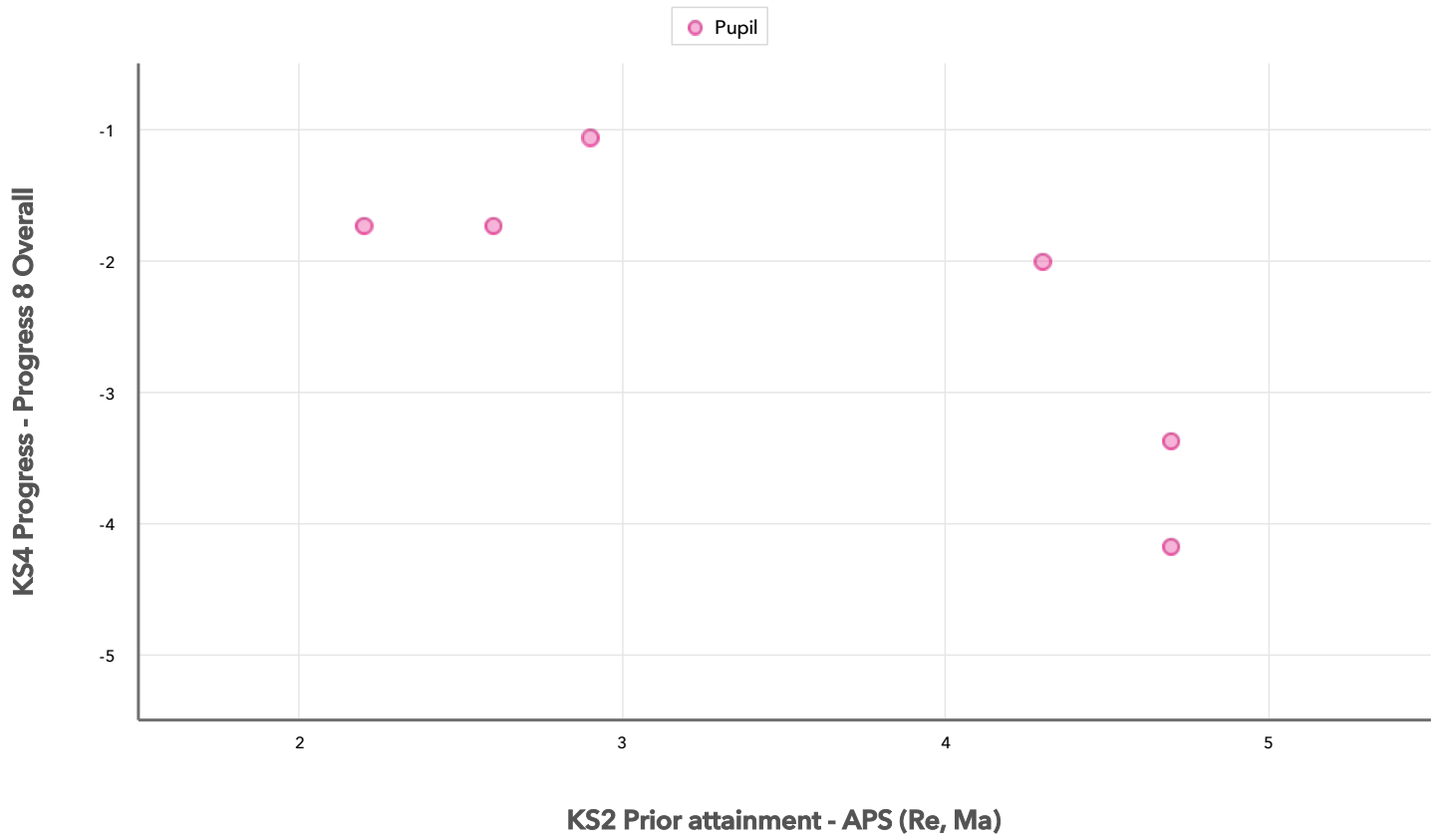


## Attainment & progress

	Pupils			Attainment			Progress		
		FSM6	Not FSM6	Attainment 8 (Overall)			Progress 8 (Overall)		
				FSM6	Not FSM6	Gap	FSM6	Not FSM6	Gap
<b>Summary</b>	All Pupils	5	1	0.6	0	0.6	-2.47	-1.74	-0.73
<b>Gender</b>	Male	5	1	0.6	0	0.6	-2.47	-1.74	-0.73
<b>DFE Prior Attainment</b>	Middle attainers	3	-	0.7	-	-	-3.19	-	-
	Lower attainers	2	1	0.5	0	0.5	-1.4	-1.74	0.34
<b>SEN Group</b>	EHC Plan	5	1	0.6	0	0.6	-2.47	-1.74	-0.73
<b>Ethnic Group</b>	White	4	1	0.8	0	0.8	-2.05	-1.74	-0.31
	Not White	1	-	0	-	-	-4.18	-	-

# Scatterplot

KS4 Pupil scatterplot 2019 6 pupils highlighted by All pupils ▼



# Context

## Context · Year 11

		Pupils		Comparative profile 2018 / 2019		Absence during Key Stage 4		Persistent absence during Key Stage 4	
		School	School	National	School	National	School	National	
<b>Summary</b>	All Pupils	6	100%	100%	-	-	-	-	
<b>Gender</b>	Male	6	100%	51%	-	-	-	-	
<b>DFE Prior Attainment</b>	Middle attainers	3	50%	42%	-	-	-	-	
	Lower attainers	3	50%	11%	-	-	-	-	
<b>Pupil Premium</b>	FSM (in last 6 years)	5	83%	25%	-	-	-	-	
	Not FSM (in last 6 years)	1	17%	75%	-	-	-	-	
<b>FSM</b>	FSM	4	67%	14%	-	-	-	-	
	Not FSM	2	33%	86%	-	-	-	-	
<b>FSM Ever</b>	FSM (ever)	5	83%	33%	-	-	-	-	
	Not FSM (ever)	1	17%	67%	-	-	-	-	
<b>Term of Birth</b>	Spring Term	4	67%	32%	-	-	-	-	
	Summer Term	2	33%	35%	-	-	-	-	
<b>SEN Group</b>	EHC Plan	6	100%	4%	-	-	-	-	
<b>EAL</b>	First language English	6	100%	83%	-	-	-	-	
<b>Mobility</b>	Joined before Y10	6	100%	96%	-	-	-	-	
<b>Ethnicity</b>	White	5	83%	75%	-	-	-	-	
	Black Caribbean	1	17%	3%	-	-	-	-	