

Year 11 (Predicted) Progress 5



(2017) KS4 Examination Analysis

Parallel Learning Trust

3 students

A8 Points: 2017 Est

Progress 8 is based on a students' fine line average of Key Stage 2 (KS2) English and Mathematics, National Attainment 8 points are published each year - they are the expected points, at KS4, from this KS2 base.

Progress 8 floor standards do not apply to special schools, pupil referral units, alternative provision or hospital schools. The floor standard for 2016: a school will be below the floor standard if Progress 8 score is below -0.5

Progress 8 is used nationally for performance measures for main stream secondary schools. Mainstream secondary schools have KS4 curriculum to support P8 - an English Baccalaureate (EBBAC) curriculum, traditionally comprising of :

English Language and Literature, Mathematics, Science Core and Additional, Triple Science (Biology, Chemistry and Physics), Computer Science, Geography, History and a GCSE Modern Foreign language

There are 4 'buckets' of subjects for Progress 8:

1. English (double weighted points),
2. Mathematics (double weighted points),
3. EBBAC (comprising points from best 3 EBBAC subjects taken),
4. Open (comprising of points from best 3 non EBBAC subjects)

'Progress 8 measures' are difficult to use with special/BESD/PRU's as it relies on having an EBBAC curriculum (as outlined). These schools offer an appropriate curriculum to meet the various needs of its 'cliental' so comparing performance to national Progress 8 would be unfair given the reduced curriculum offer . Progress 5 can be modelled for special schools, pupil referral units, alternative provision or hospital schools.

Progress 5 (P5) works on a similar principle to Progress 8 but with fewer 'buckets'

1. 'English Bucket' which is double weighted points,
2. 'Mathematics Bucket' again which is double weighted points,
3. 'Open Bucket' where 3 additional GCSE and or Vocational equivalents points can go.

P5 consists effectively from a total of 7 subjects (Eng X2, Ma X2, + 3 other subjects) this score is then compared to national Attainment 8 points but factored by 70% (as Progress 8 effectively comes from 10 subjects - Eng x2, Maths x 2, 3 EBBAC points and 3 Open points)

In 2017 GCSE English Language, English Literature and Mathematics will be on the new 1-9 scale

2016 P5 Worked example (student A): Student with KS2 Average (E/M) of 3.00

3.0	23.37
-----	-------

National Attainment Points for KS2 AVG 3.00 - 23.37

Pts	8	7	6	5	4	3	2	1
	A*	A	B	C	D	E	F	G

2016 Points

	English Bucket (x2)	Mathematics Bucket (x2)	Open 1 (x1)	Open 2 (x1)	Open 3 (x1)
	English Language	Mathematics	Science	Art	PE GCSE
Grade	E	F	F	F	E
Points	6	4	2	2	3

Total Points 17

Expected points 16.36

(70% of 23.37)

Student A's Progress 5 score: $(17-16.36) / 7 = +0.09$

(student A's performance in line with national expected)

2016 P5 worked example (student B) Student with KS2 Average (E/M) of 3.40

3.4	27.71
-----	-------

National Attainment Points for KS2 AVG 3.40 - 27.71

	English Bucket (x2)	Mathematics Bucket (x2)	Open 1 (x1)	Open 2 (x1)	Open 3 (x1)
	English Language	Mathematics	Science	Art	PE GCSE
Grade	G	G	F	E	N
Points	2	2	2	3	0

Total Points 9

Expected points 19.40

(70% of 27.71)

Student B's Progress 5 score: $(9-19.40) / 7 = -1.48$

(student B's KS4 performance significantly below national expected)

INSPIRE Academy

KS4, attainment, thresholds by pupil characteristics

		5+ A* to G	5+ A* - C	5+A*-C with EM (9-5)	5+A*-C with EM (9-4)	Progress 5			
		School	School	School	School	Cohort	P5	Cohort	A5
All	3	66.7%	0.0%	0.0%		3	-0.14	3	18.08
Male	3	66.7%	0.0%	0.0%	0%	3	-0.14	3	18.08
Female	0				0%				
Non SEND	0				0%				
SENDK	0				0%				
SENDE	3	66.7%	0.0%	0.0%	0%	3	-0.14	3	18.08
Upper	0				0%				
Middle	1	100.0%	0.0%	0.0%	0%	1	-1.19	1	20.00
Lower	2	50.0%	0.0%	0.0%	0%	2	0.38	2	17.13
No KS2	0	0.0%	0.0%	0.0%	0%				
Pupil Premium	3	66.7%	0.0%	0.0%	0%	3	-0.14	3	18.08
Non Pupil Premium	0				0%				
First Language - Other	0				0%				
First Language - English	3	66.7%	0.0%	0.0%	0%	3	-0.14	3	18.08
Year 7 Start	0				0%				
Year 8 Start	0				0%				
Year 9 Start	2	50.0%	0.0%	0.0%	0%	2	-0.69		15.13
Year 10/11 Start	1	100.0%	0.0%	0.0%	0%	1	0.96		24.00

Year 11 (Predicted) Progress 5

INSPIRE Academy

A*-G analysis

		1+(A* to G)		2+(A* to G)		3+(A* to G)		4+(A* to G)		5+(A* to G)	
All	3	100.0%	3	100.0%	3	100.0%	3	100.0%	3	66.7%	2
Male	3	100.0%	3	100.0%	3	100.0%	3	100.0%	3	66.7%	2
Female	0		0		0		0		3		0

Special Educational Needs

Non SEND	0										
SEND Support K	0										
SEND with statement or EHC plan	3	100.0%	3	100.0%	3	100.0%	3	100.0%	3	66.7%	2

KS2 Band

Upper	0										
Middle	1	100.0%	1	100.0%	1	100.0%	1	100.0%	1	100.0%	1
Lower	2	100.0%	2	100.0%	2	100.0%	2	100.0%	2	50.0%	1
No KS2	0										

Disadvantaged pupils

Disadvantaged pupils	3	100.0%	3	100.0%	3	100.0%	3	100.0%	3	66.7%	2
Other pupils	0										

English as a First Language

First Language - Other	0										
First Language - English	3	100.0%	3	100.0%	3	100.0%	3	100.0%	3	66.7%	2

Year 11 (Predicted) Progress 5

A*-F analysis

		1+(A* to F)		2+(A* to F)		3+(A* to F)		4+(A* to F)		5+(A* to F)	
All	3	100.0%	3	66.7%	2	66.7%	2	66.7%	2	66.7%	2
Male	3	100.0%	3	66.7%	2	66.7%	2	66.7%	2	66.7%	2
Female	0		0		0		0		2		0

Special Educational Needs

Non SEND	0										
SEND Support K	0										
SEND with statement or EHC plan	3	100.0%	3	66.7%	2	66.7%	2	66.7%	2	66.7%	2

KS2 Band

Upper	0										
Middle	1	100.0%	1	100.0%	1	100.0%	1	100.0%	1	100.0%	1
Lower	2	100.0%	2	50.0%	1	50.0%	1	50.0%	1	50.0%	1
No KS2	0										

Disadvantaged pupils

Disadvantaged pupils	3	100.0%	3	66.7%	2	66.7%	2	66.7%	2	66.7%	2
Other pupils	0										

English as a First Language

First Language - Other	0										
First Language - English	3	100.0%	3	66.7%	2	66.7%	2	66.7%	2	66.7%	2

Year 11 (Predicted) Progress 5

A*-E analysis

		1+(A* to E)		2+(A* to E)		3+(A* to E)		4+(A* to E)		5+(A* to E)	
All	3	100.0%	3	66.7%	2	66.7%	2	66.7%	2	66.7%	2
Male	3	100.0%	3	66.7%	2	66.7%	2	0.0%	0	66.7%	2
Female	0		0		0		0		0		0

Special Educational Needs

Non SEND	0										
SEND Support K	0										
SEND with statement or EHC plan	3	100.0%	3	66.7%	2	66.7%	2	66.7%	2	66.7%	2

KS2 Band

Upper	0										
Middle	1	100.0%	1	100.0%	1	100.0%	1	100.0%	1	100.0%	1
Lower	2	100.0%	2	50.0%	1	50.0%	1	50.0%	1	50.0%	1
No KS2	0										

Disadvantaged pupils

Disadvantaged pupils	3	100.0%	3	66.7%	2	66.7%	2	66.7%	2	66.7%	2
Other pupils	0										

English as a First Language

First Language - Other	0										
First Language - English	3	100.0%	3	66.7%	2	66.7%	2	66.7%	2	66.7%	2

Year 11 (Predicted) Progress 5

A*-D analysis

		1+(A* to D)		2+(A* to D)		3+(A* to D)		4+(A* to D)		5+(A* to D)	
All	3	100.0%	3	66.7%	2	66.7%	2	66.7%	2	33.3%	1
Male	3	100.0%	3	66.7%	2	66.7%	2	66.7%	2	33.3%	1
Female	0		0		0		0		2		0

Special Educational Needs

Non SEND	0										
SEND Support K	0										
SEND with statement or EHC plan	3	100.0%	3	66.7%	2	66.7%	2	66.7%	2	33.3%	1

KS2 Band

Upper	0										
Middle	1	100.0%	1	100.0%	1	100.0%	1	100.0%	1	0.0%	0
Lower	2	100.0%	2	50.0%	1	50.0%	1	50.0%	1	50.0%	1
No KS2	0										

Disadvantaged pupils

Disadvantaged pupils	3	100.0%	3	66.7%	2	66.7%	2	66.7%	2	33.3%	1
Other pupils	0										

English as a First Language

First Language - Other	0										
First Language - English	3	100.0%	3	66.7%	2	66.7%	2	66.7%	2	33.3%	1

INSPIRE Academy

BTEC/Vocational attainment analysis

BTEC Construction

8.5 7 5.5 4 1.5

Entries: 3

APS	L2Merit+	L2Pass+	L1Pass+	L2Dist*	L2Dist	L2Merit	L2Pass	L1Pass	EL3	EL2	EL1	Fail	N/X
13.3	0.0%	0.0%	66.7%	0.0%	0.0%	0.0%	0.0%	66.7%	0.0%	0.0%	0.0%	0.0%	0.0%
				0	0	0	0	2	0	0	0	0	0

Year 11 (Predicted) Progress 5

INSPIRE Academy

Year 11 (Predicted) Progress 5

3

(A-Z Students')

GCSE/Vocational Qualifications

		15P	Actual P	15 Sco	English Language	Mathematics	English Literature	Science	Art	5 GCSE								BTEC Construction			
1	Student1	M	28.33	20.00	-1.19	3	3	3	D	G	E							L1Pass			
2	Student2	M	17.25	24.00	0.96	4	3	4	D	F	D							Pass			
3	Student3	M	11.63	10.25	-0.20	3	1	N	G									L1Pass			

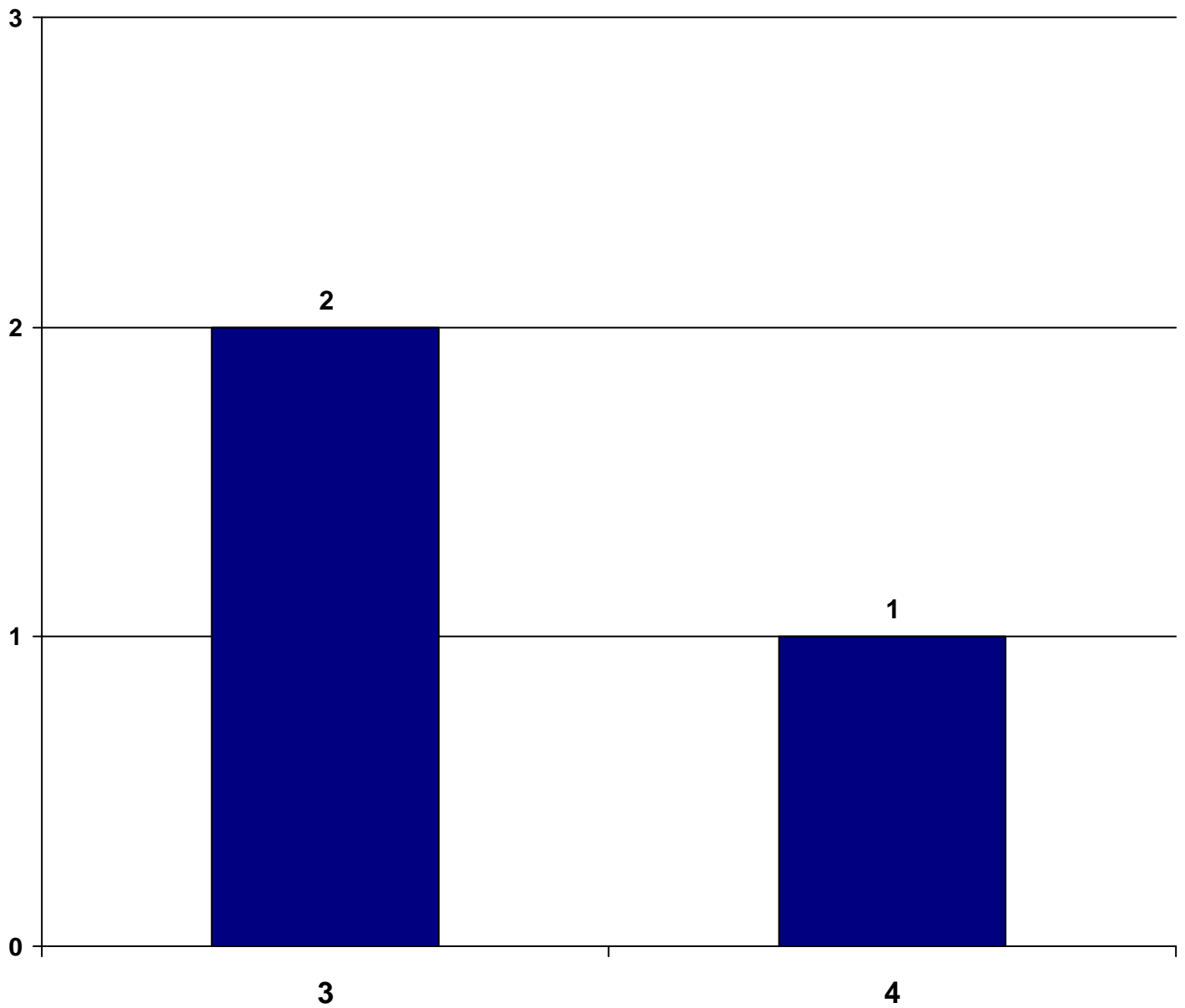
GCSE English Language

(All)

English Language

Entries: 3

APS	9-5	9-4	9-1	9	8	7	6	5	4	3	2	1	U/N/X
3.3	0.0%	33.3%	100.0%	0.0%	0.0%	0.0%	0.0%	0.0%	33.3%	66.7%	0.0%	0.0%	0.0%
				0	0	0	0	0	1	2	0	0	0



Year 11 (Predicted) Progress 5

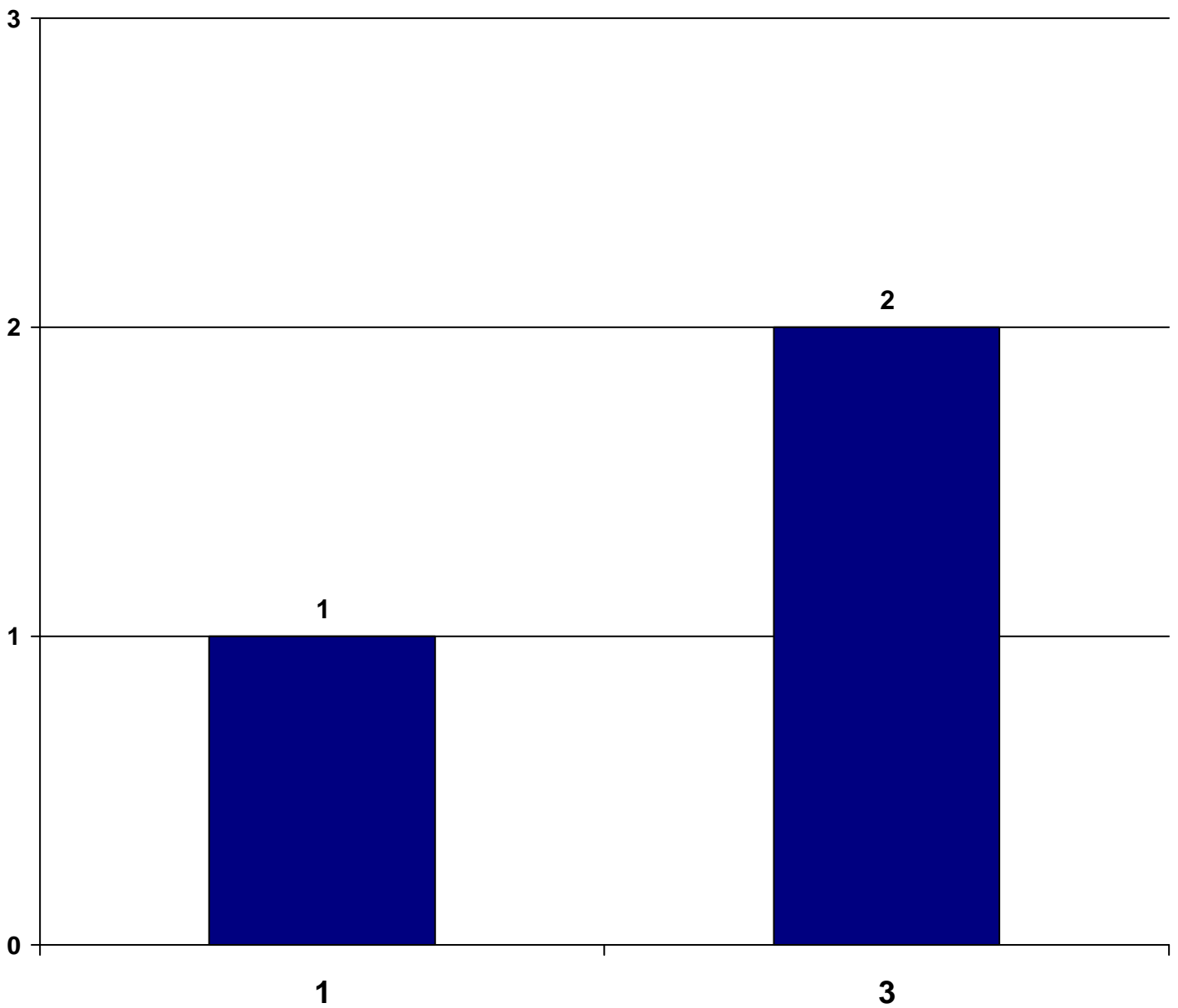
GCSE Mathematics

(All)

Mathematics

Entries: 3

APS	9-5	9-4	9-1	9	8	7	6	5	4	3	2	1	J/N/X
2.3	0.0%	0.0%	100.0%	0.0%	0.0%	0.0%	0.0%	0.0%	0.0%	66.7%	0.0%	33.3%	0.0%
				0	0	0	0	0	0	2	0	1	0



Year 11 (Predicted) Progress 5

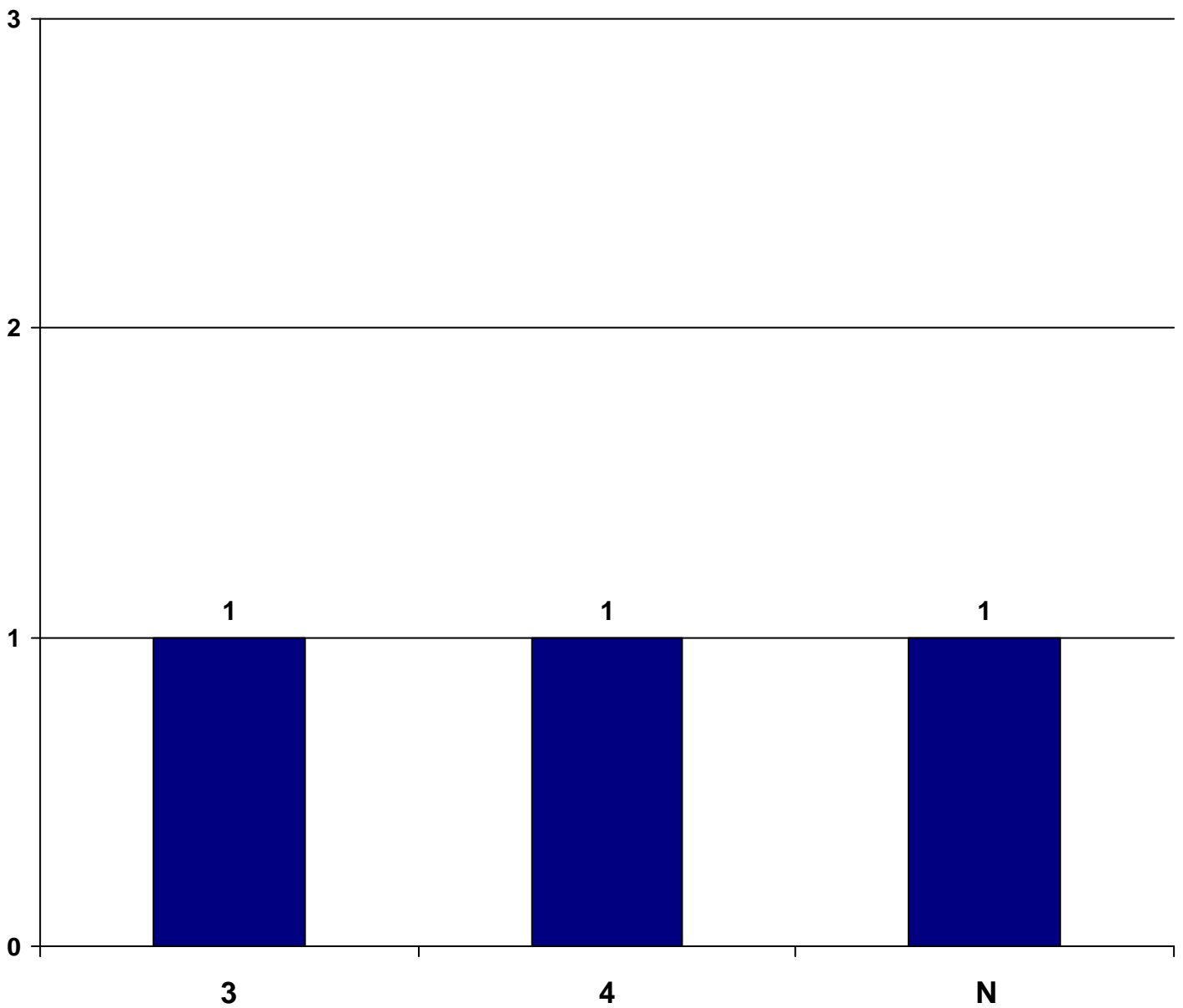
English Literature

(All)

English Literature

Entries: 3

APS	9-5	9-4	9-1	9	8	7	6	5	4	3	2	1	N/X
2.3	0.0%	33.3%	66.7%	0.0%	0.0%	0.0%	0.0%	0.0%	33.3%	33.3%	0.0%	0.0%	33.3%
				0	0	0	0	0	1	1	0	0	1



Year 11 (Predicted) Progress 5

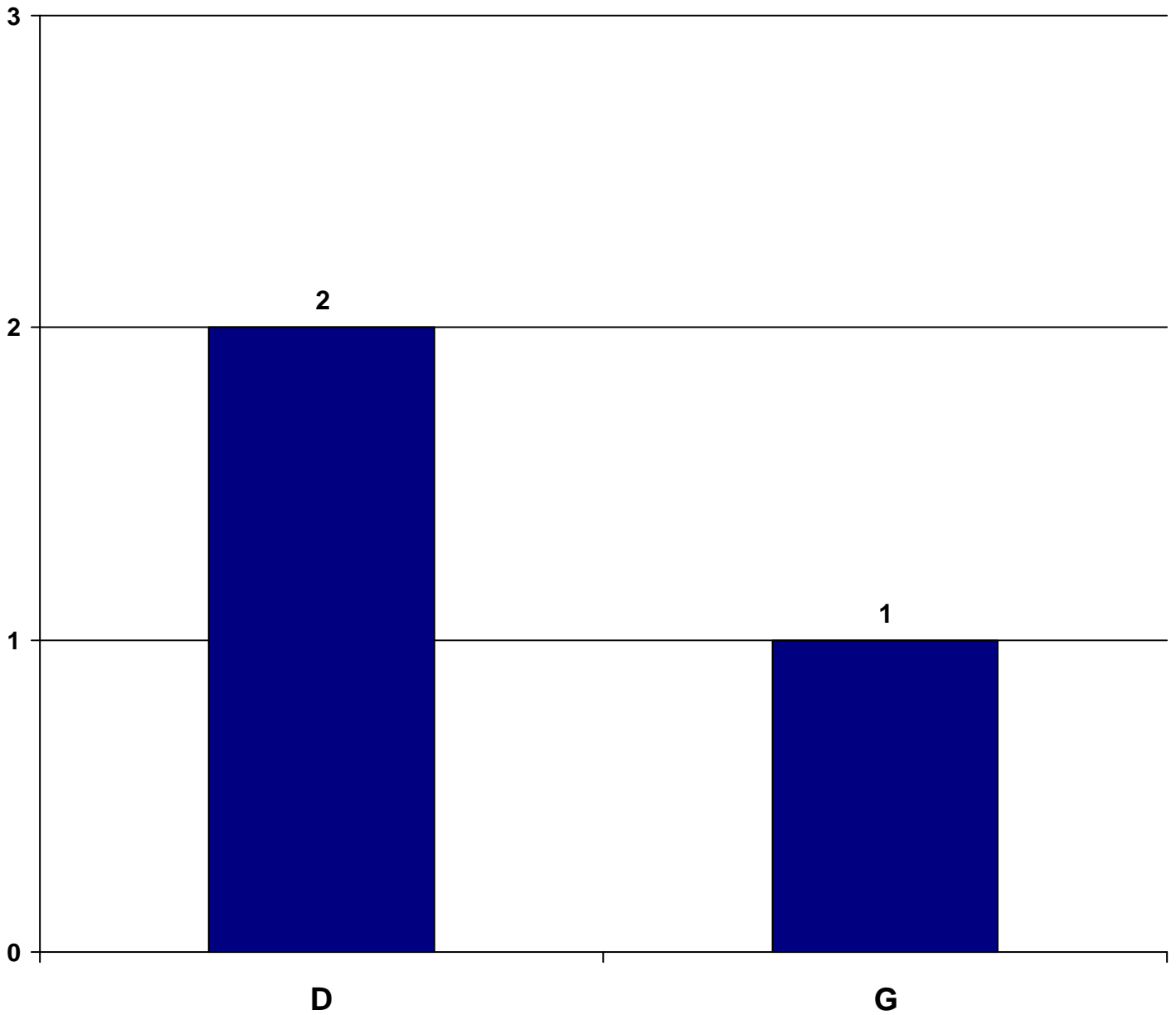
Science

(All)

Science

8.5 7 5.5 4 3 2 1.5 1 Entries: 3

APS	A*-C	A*-E	A*-G	A*	A	B	C	D	E	F	G	U	N/X
2.3	0.0%	66.7%	100.0%	0.0%	0.0%	0.0%	0.0%	66.7%	0.0%	0.0%	33.3%	0.0%	0.0%
				0	0	0	0	2	0	0	1	0	0

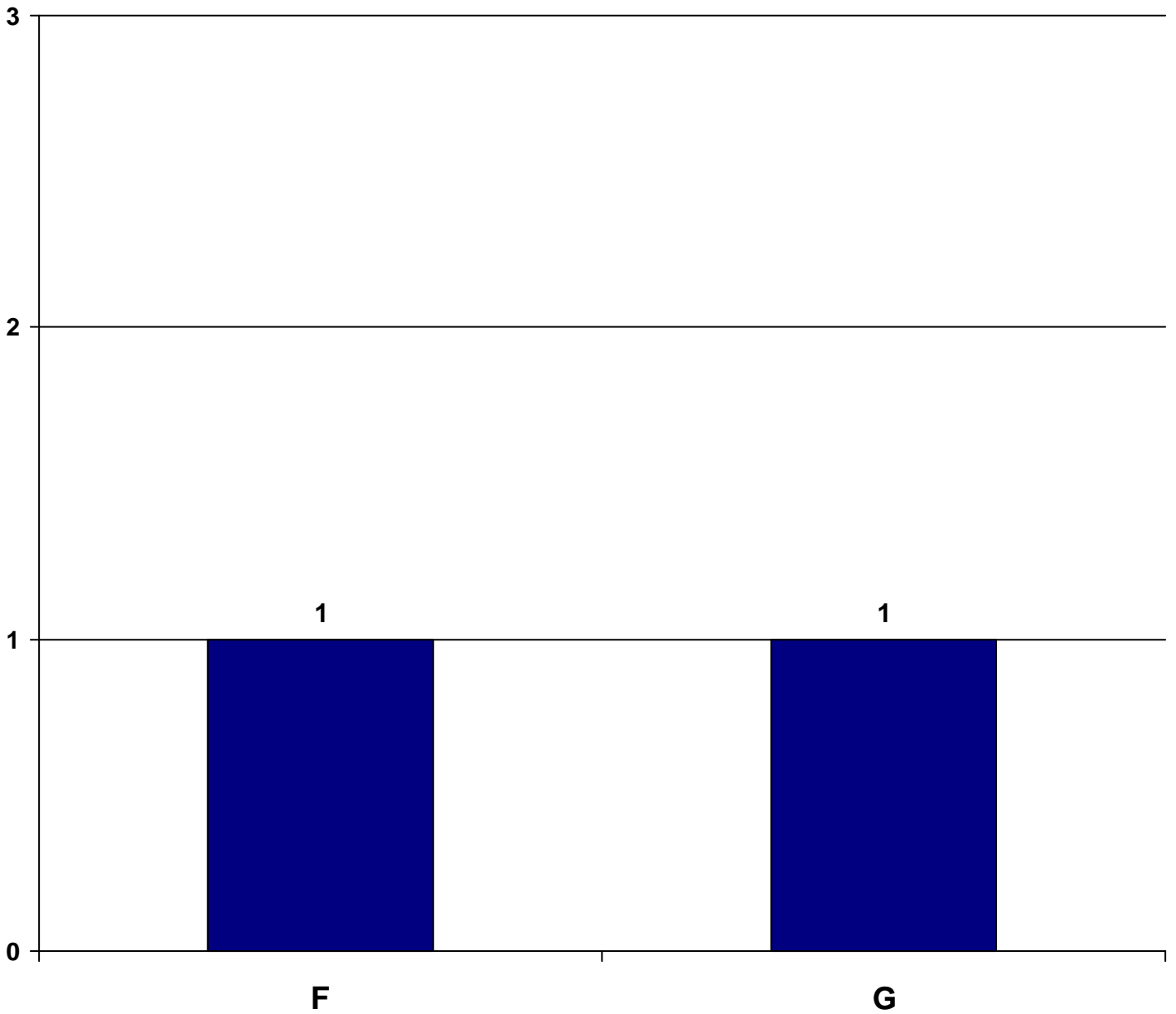


Year 11 (Predicted) Progress 5

Art

(All)

Art				8.5	7	5.5	4	3	2	1.5	1	Entries:	2
APS	A*-C	A*-E	A*-G	A*	A	B	C	D	E	F	G	U	N/X
1.5	0.0%	0.0%	100.0%	0.0%	0.0%	0.0%	0.0%	0.0%	0.0%	50.0%	50.0%	0.0%	0.0%
				0	0	0	0	0	0	1	1	0	0



Year 11 (Predicted) Progress 5

PE GCSE

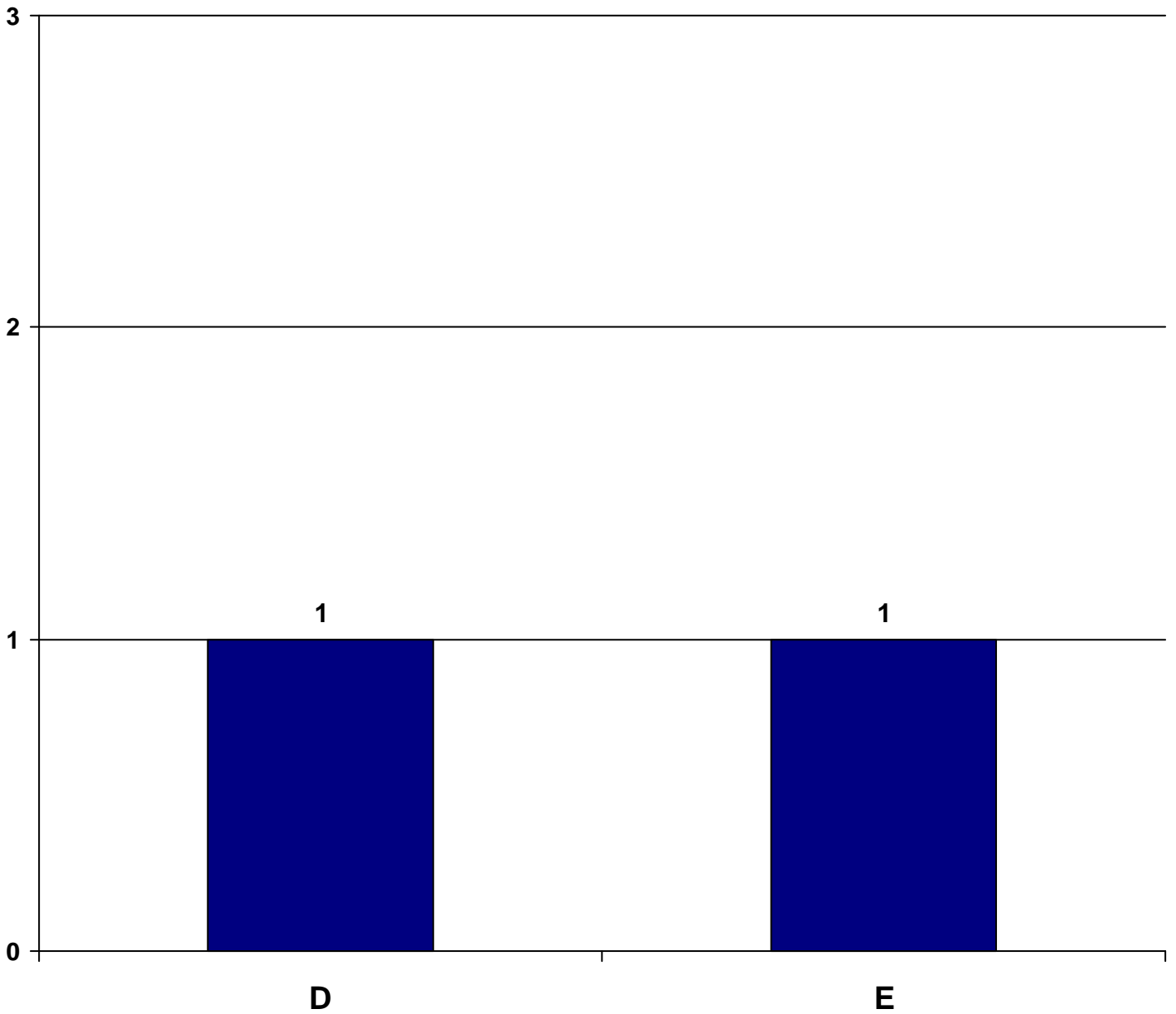
(All)

PE GCSE

8.5 7 5.5 4 3 2 1.5 1 Entries: 2

APS	A*-C	A*-E	A*-G	A*	A	B	C	D	E	F	G	U	N/X
2.5	0.0%	100.0%	100.0%	0.0%	0.0%	0.0%	0.0%	50.0%	50.0%	0.0%	0.0%	0.0%	0.0%

0 0 0 0 1 1 0 0 0 0



Year 11 (Predicted) Progress 5

BTEC Construction

(All)

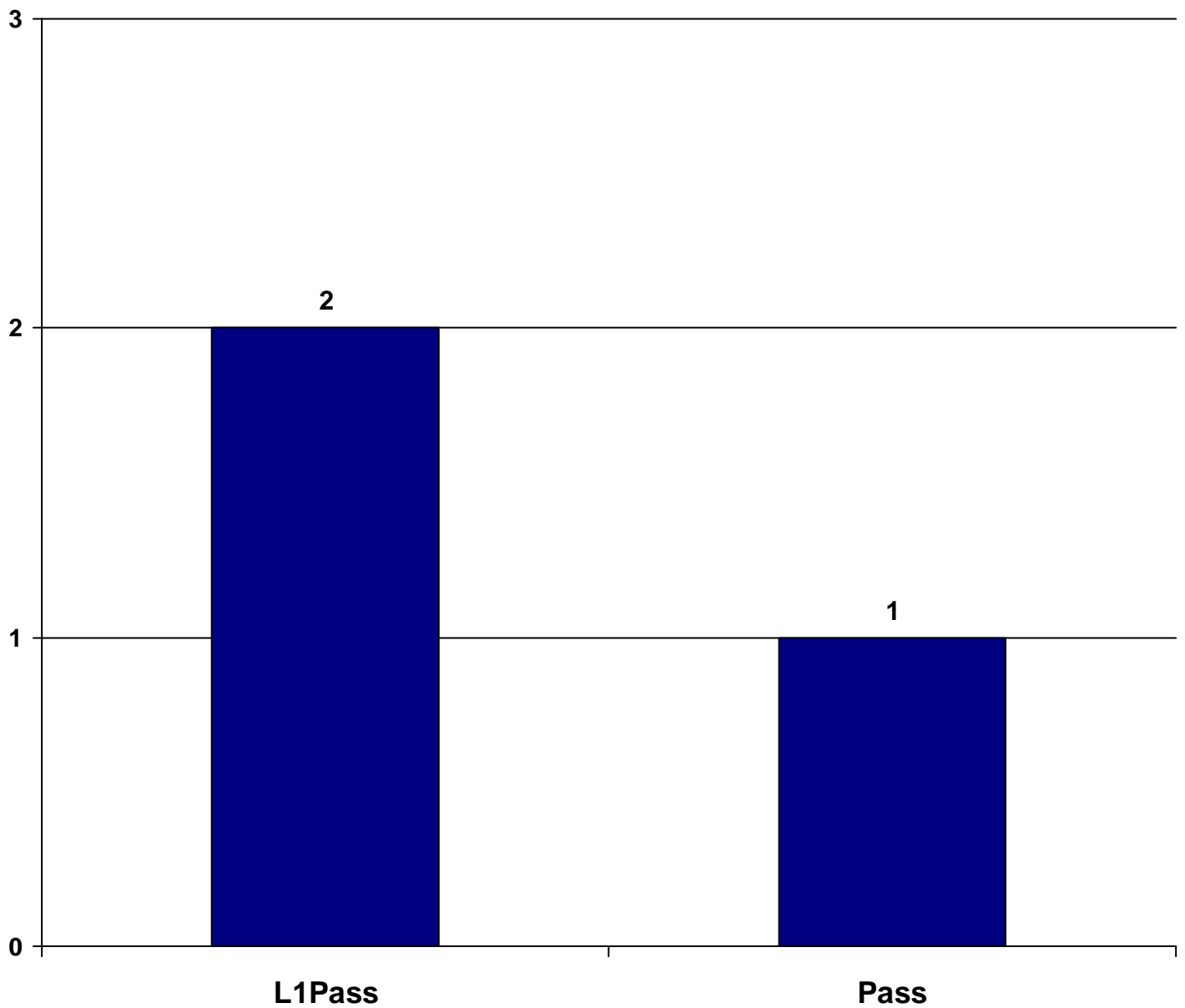
BTEC Construction

8.5 7 5.5 4 1.5

Entries: 3

APS	L2Merit+	L2Pass+	L1Pass+	L2Dist*	L2Dist	L2Merit	L2Pass	L1Pass	EL3	EL2	EL1	Fail	N/X
13.3	0.0%	0.0%	66.7%	0.0%	0.0%	0.0%	0.0%	66.7%	0.0%	0.0%	0.0%	0.0%	0.0%

0 0 0 0 2 0 0 0 0 0 0 0 0



Year 11 (Predicted) Progress 5

Student1



Inspire Academy

KS2 AVG EM	4.50	P5 Expected Pts	28.33
KS2 English:	4.50	P5 Actual Pts	20.00
KS2 Maths:	4.50	P5 Score	-1.19

5+A*-C (E/M 9-5)	N	5+A*-C	N	5+A*-G	Y
------------------	---	--------	---	--------	---

Progress 5

Dble Pts	Dble Pts	Sgl Pts	Sgl Pts	Sgl Pts
English	Mathematics	Other1	Other2	Other3
3	3	3	D	E

Key:

ACH	ACHSUB
Predicted	Sub

English Language	3		Mathematics	3	
English Literature	3		Science	D	
Art	G		PE GCSE	E	

BTEC Construction	L1Pass
-------------------	--------

Year 11 (Predicted) Progress 5

Student2



Inspire Academy

KS2 AVG EM	3.50	P5 Expected Pts	17.25
KS2 English:	3.50	P5 Actual Pts	24.00
KS2 Maths:	3.50	P5 Score	0.96

5+A*-C (E/M 9-5)	N	5+A*-C	N	5+A*-G	Y
------------------	---	--------	---	--------	---

Progress 5

Dble Pts	Dble Pts	Sgl Pts	Sgl Pts	Sgl Pts
English	Mathematics	Other1	Other2	Other3
4	3	4	D	D

Key:

ACH	ACHSUB
Predicted	Sub

English Language	4		Mathematics	3	
English Literature	4		Science	D	
Art	F		PE GCSE	D	

BTEC Construction	Pass
-------------------	------

Year 11 (Predicted) Progress 5

Student3



Inspire Academy

KS2 AVG EM	2.20	P5 Expected Pts	11.63
KS2 English:	2.20	P5 Actual Pts	10.25
KS2 Maths:	2.20	P5 Score	-0.20

5+A*-C (E/M 9-5)	N	5+A*-C	N	5+A*-G	N
------------------	---	--------	---	--------	---

Progress 5

Dble Pts	Dble Pts	Sgl Pts	Sgl Pts	Sgl Pts
English	Mathematics	Other1	Other2	Other3
3	1	G	L1Pass	N

Key:

ACH	ACHSUB
Predicted	Sub

English Language	3		Mathematics	1	
English Literature	N		Science	G	

BTEC Construction	L1Pass
--------------------------	---------------

Year 11 (Predicted) Progress 5