

Head Teacher's Comment – from Bryony Surtees

Even though COVID cases in Cambridgeshire are high and among the top 10 nationally, the COVID rates at our school, thankfully remain relatively low. We have two members of staff away and 6 children who are all positive. There are three cases in Ladybird and one in Little Elvers, Caterpillar and Scorpion class. I am hoping that we continue to have very few positive cases but it is a very contagious disease and so we will have to wait and see. Hopefully with spring around the corner, we may be able to get back to some sense of normality. Last week, a group of our Year 6 children took part in an Active Play Education football tournament against other local schools. They played skilfully and were great ambassadors for the school and although we didn't win, they did very well and we are very proud of them. Well done to all of the children who took part. Our school is taking part in the East Cambridgeshire Art Exhibition 2022 at the Babylon gallery in Ely and several of our children from years 2 -6 have submitted art work to be exhibited. It is a free event taking place from 1st February – 27th February and it is wonderful to see all of the art work from all schools across Ely. It is well worth a visit so please do pop along to support this local event. I hope you all have a great weekend!

Latest news and information from Isle of Ely Primary School...

Staffing Updates:

Mrs Godfrey went on maternity leave this week. We look forward to hearing news about her baby soon and send her all of our best wishes.

Mrs Nicole Murray, our part time teaching assistant in Reception, has left us today. We thank her for all of her hard work and wish her well with her future endeavours.

We are currently advertising for a full time teaching assistant. If you are interested or you know someone who may be interested in the post, please direct them to our website for further information.

Therapy Dog:

Ivy, our Isle of Ely 'Dog Mentor' has now started working in school having successfully completed her training. She is a very important member of our school team, supporting the wellbeing (both emotional and academic) of a growing number of children. The Dog Mentor programme has built upon the benefits of the human-animal bond, giving children positive experiences with dogs that can help them educationally, developmentally, emotionally and socially. Ivy will be in school each Monday afternoon, Wednesday afternoon and Friday morning. If your child or your child's class are invited to spend time with Ivy, you will be informed via parentmail and you can opt out if do not wish your child to be involved.

Vision Screening:

Vision screening is taking place for all of our Reception and Year 1 children on Wednesday 2nd February. Parents have received opt out letters if they do not wish their child to take part which you should return to school if this is the case.

COVID:

As you will be aware, the recommendation for face coverings in communal spaces ended this week. Reviewing the covid-19 rates (with both Cambridgeshire and Peterborough being in the top 10 national for community rates), the Local authority have agreed with the Director of Public Health, Jyoti Atri, that we should continue to wear face coverings in communal spaces at school. Therefore, the school is not changing its risk assessment and is keeping all of the current COVID measures in place. We ask that you continue to wear masks when you are dropping off and picking up your child. We will review this position in 2 weeks' time or if the situation changes.

Parent Share Sessions:

Currently, we are still unable to invite you into school for our parent share sessions which were scheduled to take place next week but we are hoping that our next planned sessions will go ahead in March. As you are unable to attend, we have videoed three maths lessons, Year 1, Year 3 and Year 6 which will be uploaded onto our maths page on our website so you can see how we teach Power Maths. A big thank you to Miss Cross, Miss Overson and Ms Bradshaw-Campbell for the recordings.

School Term Dates 2021/2022

Spring term

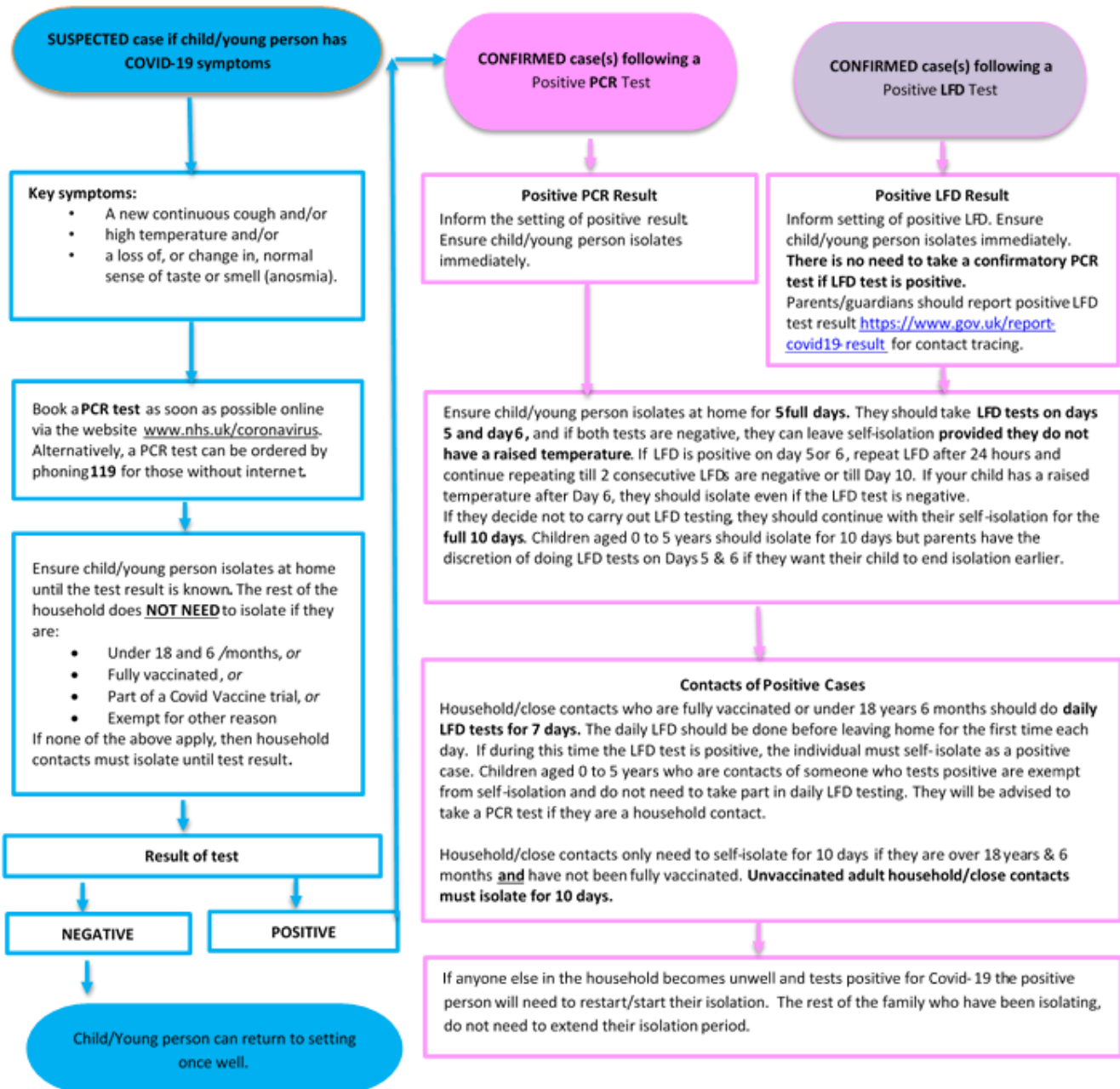
Starts	Tuesday 4th January 2022
Half term	Monday 14th February - Friday 18th February
Ends	Friday 1st April 2022
Spring (Easter) holiday	Monday 4th April - Monday 18th April 2022

Summer Term

Starts	Tuesday 19th April 2022
Half term	Monday 30th May - Friday 3rd June
Ends	Friday 22nd July 2022
Bank Holiday (School Closed)	Monday 2nd May 2022 & Monday 6 th June

PD days - The school is closed on the following days for the professional development of staff
1st September 2021, 22nd October 2021, 4th January 2022, 19th April 2022, 27th May 2022

For any **SUSPECTED** or **CONFIRMED** case of COVID-19 in a child/young person please follow the flow chart below



- With the emergence of the highly transmissible Omicron Variant, we continue to ask families/children to wash hands regularly, keep spaces well ventilated, wear face coverings (if aged 11 and over) in crowded public indoor areas, maintain distance, get vaccinated and take LFD tests prior to meeting people outside your household.
- Face coverings are to be worn by everyone over the age of 11yrs unless exempt on transport to and from educational settings.
- Secondary school pupils to wear face coverings in classrooms and communal areas.
- LFD test = Lateral Flow Device tests are rapid tests that can be used at home and the result is available within 30 minutes.
- PCR test = polymerase chain reaction test that can be booked online and is sent to a lab for the result.
- If you have previously received a positive Covid-19 PCR test result within the last 90 days and you are identified as a contact of someone with Covid-19 you should not take a PCR test. You should only take a PCR test if you develop any NEW symptoms of Covid-19.
- LFD tests are used for identifying Covid-19 infection where there are no symptoms. If you have symptoms always book a PCR test.
- LFD tests are safe to use in pregnancy. They are not recommended for children under 5 years of age but can be used at parent/guardian discretion.
- If you have had a Covid-19 vaccination you should still take part in the LFD testing as you may still transmit the virus.
- If you have had a recent nosebleed, or have a nose piercing, use the other nostril to swab for the LFD test. Always follow the instructions on the pack as there are different types of LFD tests.