

### Head Teacher's Comment – from Bryony Surtees

We are at the end of another half term which has flown by and we are now half way through the year. The children have achieved a lot in a few short weeks and have made good progress across the curriculum. Many of them have been talking about their learning to Mr Lloyd and have enjoyed sharing what they know. Our children know and remember a lot! Life seems to be getting to normal with the Year 1 children visiting the cathedral today and I know other year groups are planning trips and visits for next half term and beyond. I believe further guidance from the government about COVID restrictions in education is being issued after the half term break although it looks like all restrictions are being lifted so we will not ask you to wear masks. East Cambridgeshire District Council kindly donated 10 apple trees to our school and on Monday, Mr Lloyd and the eco council planted the trees. We look forward to nurturing their growth as they help us learn more about local ecology and sustainability. I wish you all a restful and enjoyable half term and look forward to welcoming the children back on Monday 21<sup>st</sup> February.

### Latest news and information from Isle of Ely Primary School...

#### Staffing Update:

Mrs Laura Fielding leaves us today as she becomes the head teacher of Spring Meadow Nursery and Infant School. We wish her well with her future endeavours.

We have appointed two new members of our admin team. Mrs Ashlea Hewitt will join us at the beginning of March as admin assistant and she will be working Wednesday, Thursday and Friday. Mrs Louise Kavanagh-Dixon is also joining the team after half term working every morning and she is our new attendance officer.

Congratulations to Mrs Natalie Godfrey who gave birth to a bouncy baby boy, George, on 1<sup>st</sup> February. Both mum and baby are doing very well.

Finally, Mrs Christine Mead, has been promoted to assistant head teacher to cover Mrs Godfrey's maternity leave.

#### Teams Points:

Congratulations to **Blue House** who have won the House Cup this half term and to celebrate all those children in **Blue House** can come to school in non-uniform on Monday 21<sup>st</sup> February.

Well done to all of the children who have earned House points this half term, over 5500 house points were awarded which is fabulous and shows how hard the children have worked and how well behaved they have been:

**Blue: 1478**

**Green: 1442**

**Yellow: 1411**

**Red: 1358**

**Parking:**

We appreciate you using our car park and parking considerately of local residents as this has resulted in less complaints recently about parking. However, drive ways are occasionally blocked or parents are using the car park of the flats opposite. Please try not to block driveways and remember there are always spaces available in our car park so please do use them.

**Maths Parent Share Videos:**

Today you will have been sent links to two videos showing you how we teach Maths in Key Stage 1 and Key Stage 2. If you have any questions or queries about them, please do get in touch with Miss Overson, our Maths Lead.

**Nuts:**

We are a nut free school as we have children in school who are severely allergic to nuts. This includes pesto and cereal bars that contain nuts. Please do not send your child in with a snack that contains nuts as we will have to take it from them.

**Babylon Art Exhibition:**

Several of our children had pieces exhibited at the Babylon Art Gallery. The exhibition is lovely, do go and have a look at the local children's art work. Felicity Berrill, Year 6, won second prize in the primary category. Well done Felicity.

## School Term Dates 2021/2022

**Spring term**

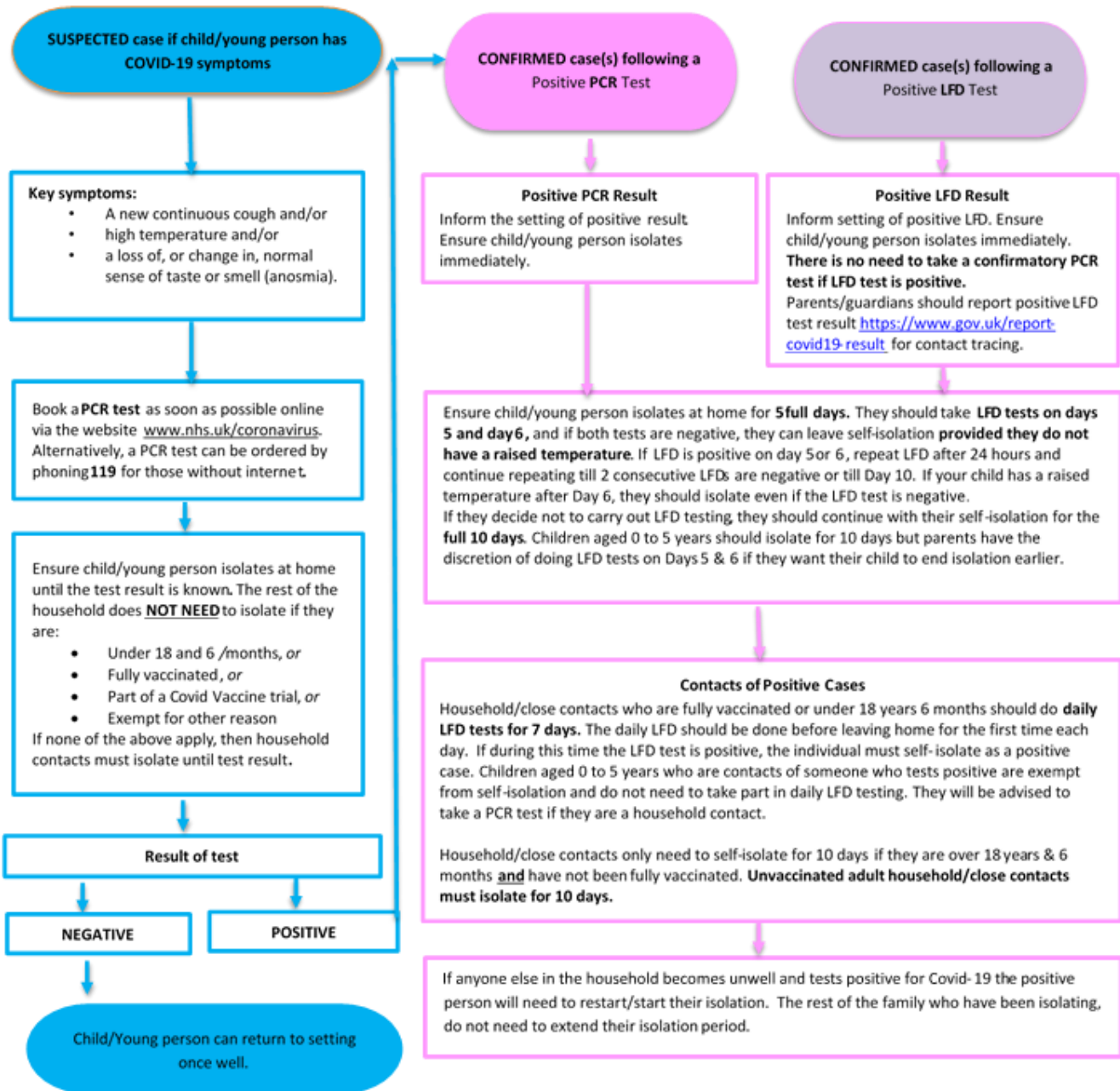
Starts	Tuesday 4th January 2022
Half term	Monday 14th February - Friday 18th February
Ends	Friday 1st April 2022
Spring (Easter) holiday	Monday 4th April - Monday 18th April 2022

**Summer Term**

Starts	Tuesday 19th April 2022
Half term	Monday 30th May - Friday 3rd June
Ends	Friday 22nd July 2022
Bank Holiday (School Closed)	Monday 2nd May 2022 & Monday 6 <sup>th</sup> June

**PD days - The school is closed on the following days for the professional development of staff**  
1st September 2021, 22nd October 2021, 4th January 2022, 19th April 2022, 27th May 2022

For any **SUSPECTED** or **CONFIRMED** case of COVID-19 in a child/young person please follow the flow chart below



- **With the emergence of the highly transmissible Omicron Variant, we continue to ask families/children to wash hands regularly, keep spaces well ventilated, wear face coverings (if aged 11 and over) in crowded public indoor areas, maintain distance, get vaccinated and take LFD tests prior to meeting people outside your household.**
- **Face coverings are to be worn by everyone over the age of 11yrs unless exempt on transport to and from educational settings.**
- **Secondary school pupils to wear face coverings in classrooms and communal areas.**
- LFD test = Lateral Flow Device tests are rapid tests that can be used at home and the result is available within 30 minutes.
- PCR test = polymerase chain reaction test that can be booked online and is sent to a lab for the result.
- If you have previously received a positive Covid-19 PCR test result within the last 90 days and you are identified as a contact of someone with Covid-19 you should not take a PCR test. You should only take a PCR test if you develop any **NEW** symptoms of Covid-19.
- LFD tests are used for identifying Covid-19 infection where there are no symptoms. If you have symptoms always book a PCR test.
- LFD tests are safe to use in pregnancy. They are not recommended for children under 5 years of age but can be used at parent/guardian discretion.
- If you have had a Covid-19 vaccination you should still take part in the LFD testing as you may still transmit the virus.
- If you have had a recent nosebleed, or have a nose piercing, use the other nostril to swab for the LFD test. Always follow the instructions on the pack as there are different types of LFD tests.