



Shaw
Education
Trust

Rubies Class Newsletter

Working together to

inspire nurture empower
Autumn Term 2 —November 2024

Hello & Updates

Welcome back to our Autumn 2 Term. This term is definitely going to be a busy and exciting one with Christmas on the way! We have a variety of exciting activities related to Christmas and Winter this half term. You will all also be invited to our special Primary 'Winter Wonderland experience' this half term so look out for the invitation! This will be on **Friday 6th December** and we would love to see you there!



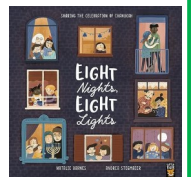
Please continue to look out on 'Evidence for Learning' for photos of the fantastic work your children will be doing this half term. Also drop us a like on the Socials!



If you have any questions or would like to get in touch please don't hesitate to contact me on - bali.kaur@ivy.set.org - Bali Kaur (Class Teacher)

Key Concepts and Skills

Encouraging our pupils to be able to communicate their likes/dislikes/choices remains at the heart of everything that we do in Rubies, and we will continue to promote a range of communication strategies, so that each pupil continues to have a voice at all times throughout the school day. We will also be getting physical on a daily basis and developing both our gross and fine motor skills. Our topic this half term is 'Special Places' and we will be learning about Chanukah, the Festival of Lights through a book called 'Eight Nights, Eight Lights'. We will finish this half term with some lovely Christmas related learning, too.



Reminders / additional information



Every **Monday** will be our Hydrotherapy day so please send in a full swimming kit with 2 towels. Please send in a **spare change of clothes** for when we do messy activities in class. Please send Library books on a **Monday** so we can swap them for new ones. We are lucky to have our own outdoor space so please send in appropriate outer wear so that your child can access and engage in outdoor play daily. We will be encouraging all our pupils to engage in oral hygiene, and brush their teeth once throughout the school day.

Please send in a toothbrush and toothpaste in a named bag for your child to use if you haven't done so already. Thank you!



Home Learning Curriculum Ideas

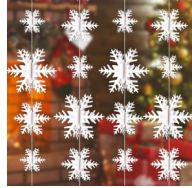
Cognition

We are learning about cause and effect and 'making things happen'



Could you explore some Christmas sensory play? How about some home made winter play dough?

How about creating paper snowflakes?



Expressive Arts

What happens if you paint with icing sugar?



Can you make me a Christingle?



Communication

How does your child communicate at home? Do they use signing, Makaton, PECS, gestures or vocalisations? Could you send me a video clip of them communicating on EFL? What is their favourite story?

Which stories do you enjoy sharing with your child?



PSHE/RSE



In PSHE we follow a scheme of work called Jigsaw

which is online, so please feel free to have a browse to see what we will be learning.

This half term we will be learning about 'Belonging to a Community' and Respectful Relationships.



Signing

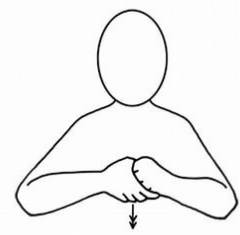
Our Makaton signs this half term are:



Light



Special



Friends