

JOHN CLIFFORD SCHOOL BULLETIN



WELCOME BACK!

Firstly, I would like to wish all our families a very Happy New Year! I hope you all enjoyed the festive break and the children were feeling ready and excited to return to school. I have received a very warm welcome from lots of them already.

INTRODUCTIONS

I will take this opportunity to introduce myself. My name is Mrs Hannah Roberts, I am the new Headteacher at JC. Previously, I have worked as Assistant Head and SENCo at a City school in Nottingham and most recently, held the role of Deputy Head and SENCo at a school in Ruddington, Nottinghamshire.

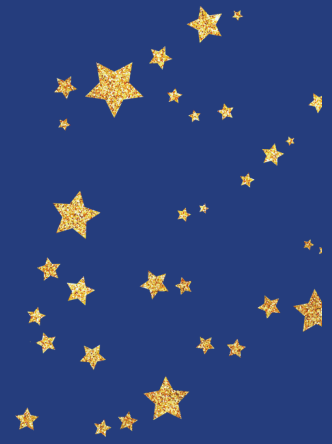
I feel very fortunate to be joining such a welcoming and committed team of people at John Clifford as we embark on the next chapter of development for the school. I look forward to updating you with some of our priorities and next steps and working with the staff, pupils and parents to continue to strengthen the provision, opportunities and community links.

My working days are Monday - Thursday and I will not be present in school on a Friday. As a parent of two daughters, having a day a week where I can be available to take them to school is an important commitment for me personally. Therefore, Mr Lumley, the current Headteacher at Springbank Academy will be available at John Clifford if he is needed by any parents, pupils or staff. I am sure you will join me in giving him a warm welcome.



STAR ASSEMBLY

Please note that Star Assembly will now take place on a Monday morning so I can be in school to celebrate the achievements of our wonderful pupils! I have already been made aware by lots of children how important and enjoyable this is for them so I am very much looking forward to it.



BEING GREEN IS GOOD

During my first week I have seen lots of really impressive behaviour for learning and lovely manners from the children. I feel it is important that we recognise and celebrate when pupils are making the right choices as this promotes a happy and safe school for everyone. Starting next week, we will be introducing some rules (set out below), and when any member of staff sees a pupil displaying a consistent positive behaviour - such as great listening in the classroom, holding the door open for someone else and generally meeting our high expectations they will be given a raffle ticket. They write their name on the back and post it into a box in their classrooms. The more raffle tickets, the greater the chance of being the class VIP for the following week. The VIP will have special treatment the following week, this can be a choice of: a teddy on their table, wearing a VIP lanyard, sitting on a comfy cushion in class all week or a drink and biscuit with Mrs Roberts. I did joke that they would have to listen to Taylor Swift music with me, which seemed to deter a few! It would be great if you could talk to your child about these rules.

Our JC rules Being green is good!

- We show respect to each other and the grown ups in school
- We use kind words and good manners
- We keep our hands and feet to ourselves
- We listen in the classroom so we learn to the best of our ability
- We always try our best, we encourage each other to do the same
- We move around school sensibly using an inside voice
- We look after our school, our books and equipment



SITE MANAGER

We are currently without a site manager at John Clifford, fortunately a member of our existing site team has offered to work some additional hours to support in ensuring the school is safe and well maintained until a new person is in post. Many thanks to Sakura for taking on this temporary role. Whilst I didn't get the opportunity to work with Lee, I know he will be very missed and wish him the best in his new job!

A REMINDER OF TIMINGS

School opening hours are 8:50am – 3:25pm

Gates open at 8.30am

School starts at **8:50am** - therefore children need to arrive by 8.45am

If your child is late (8.50am onwards) please come to the school office to be signed in.

Morning nursery starts at 8.40am and afternoon nursery at 12.25pm.

Gates open at 3.15pm, gates close at 3.35pm


NEXT WEEK'S MENU






FOOD FESTIVAL
7th Anniversary

WEEK 2
Autumn Winter 2025/26
08/09/25, 29/09/25, 20/10/25,
10/11/25, 01/12/25, 22/12/25,
12/01/26, 02/02/26, 23/02/26,
16/03/26

LUNCHTIME

PRIMARY
HALAL TRADITIONAL




| | MONDAY | TUESDAY | WEDNESDAY | THURSDAY | FRIDAY |
|--|--|---|--|--|--|
| THE MAIN EVENT  | Vegetable Lasagne B | Creamy Chicken & Sweetcorn Pasta C | Roast Chicken, Stuffing, Skin on Roasties and Gravy C | Mild Chilli Con Carne with Rice B | Golden Fish Fingers and Chips B |
| MEAT-FREE MAGIC  Veggie Dish | Green Veg & Butter Bean Pie with Wedges B | Veggie Whole Grain Pasta Bolognese B | Cheddar & Broccoli Crustless Quiche B | Vegetable Bean Chilli with Rice B | BBQ Veggie Wrap with Chips B |
| RAINBOW ALLEY  Vegetables and Salads | Sweetcorn | Broccoli | Carrots and Peas | Mixed Greens | Baked Beans |
| BIG TOPPING  Filled Jackets | Beans, Cheese or Tuna Mayo B | Beans, Cheese or Tuna Mayo B | Beans, Cheese or Tuna Mayo B | Beans, Cheese or Tuna Mayo B | Beans, Cheese or Tuna Mayo B |
| DESSERT TROLLEY  | Chocolate Popcorn Bars B | Orange and Peach Jelly C | Apple Tea Cake and Custard B | Iced Vanilla Sponge Cake B | Carrot Cake B |

What impact has your meal had on planet Earth today?

A Very Low
B Low
C Medium
D High
E Very High

AVAILABLE DAILY
DAILY SALAD BOWL, FRESHLY BAKED BREAD, YOGHURTS AND CUT FRUIT

PASTA TWIRLER
AVAILABLE EVERY DAY
TOPPED PASTA HOT PASTA TOPPED WITH HOMEMADE TOMATO SAUCE & CHEESE C





DID YOU KNOW? A two week holiday in term time means that the highest attendance you can achieve is 94.7%

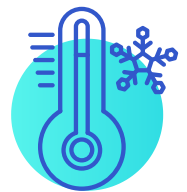
ATTENDANCE MATTERS

Attendance above 96% gives your child the best chance of success for the future.

If there is a barrier to good attendance please contact school directly to arrange a meeting with a member of the Senior Leadership Team.

COLD WEATHER

Whilst we are experiencing cold weather, can we please ask that children are sent to school with warm clothes and suitable footwear, there are some patches on the playground that remain quite icy and slippery despite gritting. Thank you for your cooperation.



DIARY DATES

| Date | Event | Participating Year Group |
|--|------------------------|--------------------------|
| Wednesday 14 th - Friday 16 th January | Willersley Residential | Year 6 |
| Thursday 29 th January | Bikeability - Level 1 | Year 4 |
| Thursday 30 th January | Bikeability - Level 1 | Year 4 |
| Friday 6 th February | Number Day | Whole school |
| Monday 9 th February | Bikeability - Level 1 | Year 5 |
| Tuesday 10 th February | Bikeability - Level 2 | Year 5 |
| Wednesday 13 th February | Bikeability - Level 2 | Year 5 |

Friday 13th February - last day of Spring term 1
Pupils return to school on Monday 23rd February