



## Child protection and Safeguarding Policy

Review Frequency	Annual
Most Recent Review	Autumn 2021
Next Review Due	Autumn 2022
Head Teacher	Leah Wright
Designated Safeguarding Lead (DSL)	Catherine Amaioua
Deputy DSL	Catherine Mulvany
Chair of Governors	Naeem Younis
Governor	Julia Diaz Gerard Dineen
Local Authority Designated Officer (LADO)	Paul Andrews  Ealing LADO support <b>asv@ealing.gov.uk</b> 020 8825 8930

## 1. Aims

The school aims to ensure that:

- Appropriate action is taken in a timely manner to safeguard and promote children's welfare
- All staff are aware of their statutory responsibilities with respect to safeguarding
- Staff are properly training in recognising and reporting safeguarding issues

We at John Perryn, believe that all children have the right to be safe in our society. Therefore, we recognise that we have a duty to ensure arrangements are in place for safeguarding and promoting the welfare of children by creating a positive school atmosphere, through our teaching and learning, pastoral support and care for both pupils and school personnel, training for school personnel and working with parents.

We at John Perryn, want all our children to achieve their full potential by:

- being as physically and mentally healthy as possible (Article 24 of the UNCRC);
- experiencing good quality education opportunities (Article 28/29 of the UNCRC);
- living in a safe environment (Article 27);
- learning and working in a safe environment (Article 28);
- experiencing emotional well-being;
- feeling loved and valued;
- receiving support from a network of reliable and affectionate relationships;
- learning to look after themselves;
- coping with everyday living;
- having a sense of identity and a positive image of themselves;
- developing their confidence and their interpersonal skills.

We at John Perryn have a statutory duty to safeguard and promote the welfare of children as described in section 175 of the **Education Act 2002** and we have due regard to the guidance [Keeping Children Safe In Education](#) (September 2021), [Working Together to Safeguard Children \(2018\)](#) and the [Governance Handbook](#). The safety and protection of children is of paramount importance to everyone in this school.

## 2. Legislation and Statutory Guidance

This policy is also based on the following legislation:

- Section 175 of the [Education Act 2002](#), which places a duty on schools and local authorities to safeguard and promote the welfare of pupils
- [The School Staffing \(England\) Regulations 2009](#), which set out what must be recorded on the single central record and the requirement for at least one person conducting an interview to be trained in safer recruitment techniques
- [The Children Act 1989](#) (and [2004 amendment](#)), which provides a framework for the care and protection of children
- Section 5B(11) of the Female Genital Mutilation Act 2003, as inserted by section 74 of the [Serious Crime Act 2015](#), which places a statutory duty on teachers to report to the police where they discover that female genital mutilation (FGM) appears to have been carried out on a girl under 18
- [Statutory guidance on FGM](#), which sets out responsibilities with regards to safeguarding and supporting girls affected by FGM
- [The Rehabilitation of Offenders Act 1974](#), which outlines when people with criminal convictions can work with children

- Schedule 4 of the [Safeguarding Vulnerable Groups Act 2006](#), which defines what ‘regulated activity’ is in relation to children
- [Statutory guidance on the Prevent duty](#), which explains schools’ duties under the Counter-Terrorism and Security Act 2015 with respect to protecting people from the risk of radicalisation and extremism
- The [Childcare \(Disqualification\) and Childcare \(Early Years Provision Free of Charge\) \(Extended Entitlement\) \(Amendment\) Regulations 2018](#) (referred to in this policy as the “2018 Childcare Disqualification Regulations”) and [Childcare Act 2006](#), which set out who is disqualified from working with children
- This policy also meets requirements relating to safeguarding and welfare in the [statutory framework for the Early Years Foundation Stage](#)

Since July 2015 we have had further regard to the need to prevent people being drawn into terrorism. This duty is known as the ‘Prevent Duty’.

This policy is linked to:

- Preventing Radicalisation Policy
- Allegation Against a Professional Policy
- Whistleblowing Policy

### 3. Definitions

We acknowledge that children can be **harmed physically, emotionally, sexually or by neglect**. It is our duty to report any concerns that we have of child abuse as the health, safety and protection of all children is paramount. (Article 19, UNCRC)

**Safeguarding and promoting the welfare of children** means:

- Protecting children from maltreatment
- Preventing impairment of children’s mental and physical health or development
- Ensuring that children grow up in circumstances consistent with the provision of safe and effective care
- Taking action to enable all children to have the best outcomes

**Child protection** is part of this definition and refers to activities undertaken to prevent children suffering, or being likely to suffer, significant harm.

**Abuse** is a form of maltreatment of a child, and may involve inflicting harm or failing to act to prevent harm. Appendix 1 explains the different types of abuse.

**Neglect** is a form of abuse and is the persistent failure to meet a child’s basic physical and/or psychological needs, likely to result in the serious impairment of the child’s health or development. Appendix 1 defines neglect in more detail.

**Sharing of nudes and semi-nudes** (also known as sexting or youth produced sexual imagery) is where children share nude or semi-nude images, videos or live streams.

**Children** includes everyone under the age of 18.

We are fully aware of the impact on children of living in families experiencing difficulties relating to mental health, substance abuse and domestic violence. We also recognise that children may experience abuse or neglect as a result of these circumstances.

Complex forms of abuse can often be difficult to identify and may even fall into more than one category.

- Fabricated/ induced illness (FII): this form of abuse occurs when a child is presented for medical attention with signs or symptoms which have been fabricated or induced by the child’s carer.
- Harmful practices related to culture and faith based beliefs: Not all practices related to culture, faith and beliefs are harmful, but there are some that are unsafe and also illegal in the UK.

- Child trafficking is the recruitment and movement of children for the purpose of exploitation.
- Grooming is when someone builds and emotional connection with a child to gain their trust for the purposes of sexual abuse or exploitation. Children and young people can be groomed online or in the real world, by a stranger or someone they know – for example a family member, friend or professional.
- Online abuse is any type of abuse that happens on the web, whether through social networks, playing online games or using mobile phones.
- Female Genital Mutilation (FGM), also known as female circumcision is child abuse and is illegal in the UK.
- Radicalisation is when a person is encouraged to become and advocate of a radical political reform by supporting terrorism and violent extremism.

We are aware that if abuse is suspected by another child, then child protection procedures will be applied to both children. All staff are aware that children can abuse other children. This is often referred to as ‘peer on peer abuse’. It can include bullying, cyber bullying, physical abuse, sexual violence, sexual harassment, which may be stand-alone or part of a broader pattern of abuse. This includes ‘up-skirting’, which involves taking a picture under a person’s clothing without them knowing, with the intention of viewing their genitals or buttocks to obtain sexual gratification, or cause the victim humiliation, distress or alarm. **This is now a criminal offence.**

John Perryn is aware of the impact of gangs, county lines, violent crime and exploitation. It is recognised that the initial response to a child victim is important and that staff will take any allegation seriously and work in ways that support children and keep them safe.

All staff have been trained and recognise the need to be vigilant for the signs that may include, but not exclusively:

- Unexplained gifts/new possessions – these can indicate children have been approached by/involved with individuals associated with criminal networks/gangs.
- Increased absence from school.
- Change in friendships/relationships with others/groups.
- Significant decline in performance.
- Signs of self-harm/significant change in wellbeing.
- Signs of assault/unexplained injuries.

With effect from October 2015, all schools are subject to a mandatory reporting requirement in respect of female genital mutilation (FGM). When a staff member suspects or discovers that an act of FGM is going to be or has been carried out on a girl aged under 18, that staff member has a statutory duty to report it to the Police.

The following 3 **safeguarding partners** are identified in Keeping Children Safe in Education (and defined in the Children Act 2004, as amended by chapter 2 of the Children and Social Work Act 2017). They will make arrangements to work together to safeguard and promote the welfare of local children, including identifying and responding to their needs:

- The local authority (LA)
- A clinical commissioning group for an area within the LA
- The chief officer of police for a police area in the LA area

#### 4. Equality Statement

Some children have an increased risk of abuse, and additional barriers can exist for some children with respect to recognising or disclosing it. We are committed to anti-discriminatory practice and recognise children’s diverse circumstances. We ensure that all children have the same protection, regardless of any barriers they may face.

We give special consideration to children who:

- Have special educational needs (SEN) or disabilities or health conditions (see section 10)
- Are young carers

- May experience discrimination due to their race, ethnicity, religion, gender identification or sexuality
- Have English as an additional language
- Are known to be living in difficult situations – for example, temporary accommodation or where there are issues such as substance abuse or domestic violence
- Are at risk of FGM, sexual exploitation, forced marriage, or radicalisation
- Are asylum seekers
- Are at risk due to either their own or a family member's mental health needs
- Are looked after or previously looked after (see section 12)
- Are missing from education
- Whose parent/carer has expressed an intention to remove them from school to be home educated

### **Equality Impact Assessment**

Under the Equality Act 2010 we have a duty not to discriminate against people on the basis of their age, disability, gender, gender identity, pregnancy or maternity, race, religion or belief and sexual orientation.

This policy has been equality impact assessed and we believe that it is in line with the Equality Act 2010 as it is fair, it does not prioritise or disadvantage any pupil and it helps to promote equality at this school.

## **5. Roles and responsibilities**

Safeguarding and child protection is **everyone's** responsibility. This policy applies to all staff, volunteers and governors in the school and is consistent with the procedures of the 3 safeguarding partners. Our policy and procedures also apply to extended school and off-site activities.

At John Perryn, we recognise that the safety and protection of pupils is the responsibility of all school personnel and volunteers as they are in a unique position to notice injuries, marks or bruises when children are undertaking certain activities, which might indicate a child has been abused. We believe that we must report and investigate all injuries for the safety and protection of the children in our care.

At John Perryn, we will inform the Local Authority Designated Officer (LADO) of any allegations of abuse by any member of the school personnel, whether they took place on the school premises or elsewhere and of the action taken in respect of these allegations. This is unless an incident occurs on the Children's Centre site, in which case it needs to be brought to the attention of the Designated Child Protection Officer of the Children's.

At John Perryn, our Head teacher or Designated Safeguarding Lead will also inform the Local Authority Designated Officer of any person connected to the school who is considered to be unsuitable to work with children or who is alleged to have been behaving inappropriately either during working hours or outside of these hours. (See teacher's standards and John Perryn Code of Conduct).

The LADO for Ealing is:

Paul Andrews

asv@ealing.gov.uk / child.protection@ealing.cjsm.net

020 8825 8930

Sherwyn Sicut, Child Protection Advisor (CPA) also provides LADO support to the LADO on Mondays, Thursdays and Fridays and is contactable via the details above.

The email address and telephone number above is managed by the child protection administration team. They will forward a referral or consultation request to the LADO and LADO support.

In the absence of both the LADO and LADO support, a duty CPA will respond to a referral/consultation.

We are committed to establishing and maintaining an ethos where children and parents feel secure in being able to talk confidently to school personnel about any concerns or fears they may have knowing that they will be taken seriously. This is through meetings between parents and the designated safeguarding officer. Parenting courses, referrals to the SAFE team or through ECIRS are all strategies used to support families for whom there may be concerns. The school also provides therapeutic support through a school counsellor.

We will ensure that the curriculum deals with safeguarding through activities and opportunities in PSHE/Citizenship lessons that will equip the children with the necessary skills and awareness to stay safe from abuse.

We are committed to establishing and maintaining procedures for safer recruitment and sound working relationships with parents and support agencies

At John Perryn we recognise that safeguarding and promoting the welfare of children is **everyone's responsibility**. All professionals should make sure their approach is child centred. This means that they should consider, at all times, what is the **best interest** of the child.' (Article 3, UNCRC)

We at John Perryn support Article 12 of the United Nations Convention on the Rights of the Child that children should be encouraged to form and to express their views. Children are taught about their rights and responsibilities and John Perryn has obtained a silver award as a Rights Respecting school.

At John Perryn, we as a school community have a commitment to promote equality. Therefore, an equality impact assessment has been undertaken and this policy is in line with the Equality Act 2010

### Role of all staff

All staff will read and understand part 1 and annex B of the Department for Education's statutory safeguarding guidance, [Keeping Children Safe in Education](#), and review this guidance at least annually.

All staff will sign a declaration at the beginning of each academic year to say that they have reviewed the guidance.

All staff will be aware of:

- Our systems which support safeguarding, including this child protection and safeguarding policy, the staff code of conduct, the role and identity of the designated safeguarding lead (DSL) and deputy, the behaviour policy, the online safety policy and the safeguarding response to children who go missing from education.
- The early help process (sometimes known as the common assessment framework) and their role in it, including identifying emerging problems, liaising with the DSL, and sharing information with other professionals to support early identification and assessment
- The process for making referrals to local authority children's social care and for statutory assessments that may follow a referral, including the role they might be expected to play
- What to do if they identify a safeguarding issue or a child tells them they are being abused or neglected, including specific issues such as FGM, and how to maintain an appropriate level of confidentiality while liaising with relevant professionals
- The signs of different types of abuse and neglect, as well as specific safeguarding issues, such as peer-on-peer abuse, child sexual exploitation (CSE), child criminal exploitation (CCE), indicators of being at risk from or involved with serious violent crime, FGM and radicalisation

- The importance of reassuring victims that they are being taken seriously and that they will be supported and kept safe

### **Role of the Designated Safeguarding Lead (DSL)**

The DSL is a member of the senior leadership team. Our DSL is Catherine Amaioua. The DSL takes lead responsibility for child protection and wider safeguarding in the school.

During term time, the DSL will be available during school hours for staff to discuss any safeguarding concerns. The DSL can also be contacted out of school hours if necessary via email on [admin@johnperryn.ealing.sch.uk](mailto:admin@johnperryn.ealing.sch.uk)

When the DSL is absent, the deputy – Catherine Mulvany, deputy head – will act as cover.

If the DSL and deputy are not available, Leah Wright, headteacher, will act as cover (for example, during out-of-hours/out-of-term activities).

The DSL will be given the time, funding, training, resources and support to:

- Provide advice and support to other staff on child welfare and child protection matters
- Take part in strategy discussions and inter-agency meetings and/or support other staff to do so
- Contribute to the assessment of children
- Refer suspected cases, as appropriate, to the relevant body (local authority children's social care, Channel programme, Disclosure and Barring Service, and/or police), and support staff who make such referrals directly

The DSL will also keep the headteacher informed of any issues, and liaise with local authority case managers and designated officers for child protection concerns as appropriate.

The full responsibilities of the DSL is set out in their job description.

### **The Designated Safeguarding Lead (Catherine Amaioua) will:**

- ensure the implementation of this policy;
- ensure everyone connected with the school is aware of this policy;
- work closely with the Head Teacher and the nominated governor;
- be trained in child protection policy procedures;
- renew training annually (last attended 22<sup>nd</sup> October 2020);
- keep a confidential Safeguarding Register of all those pupils known to be at risk and only if it is confirmed by social services that the child is at risk;
- be trained in working with all agencies;
- familiarise school personnel with the policy and procedures;
- investigate and deal with all cases of suspected or actual problems associated with child protection;
- make child protection referrals;
- record all child protection referrals;
- co-ordinate action within the school;
- liaise and seek advice from the Local Authority Designated Officer (Paul Andrews) when the need arises;
- liaise with social care and other agencies such as SAFE (Supportive Action for Families in Ealing)
- transfer the child protection file of any pupil leaving to join another school;
- provide support for any child at risk such as referring to counselling service or CAMHS
- act as a source of advice within the school;
- keep up to date with all new guidance on safeguarding children;
- keep all school personnel up to date with any changes to procedures;
- organise appropriate training for school personnel and governors;
- ensure all incidents are recorded, reported and kept confidential;
- keep all paperwork up to date;
- report back to the appropriate school personnel when necessary
- annually review the policy with the Head
- attend ARISE meetings for Radicalisation

### **Pupils Transferring to another School**

The following procedures will take place if a pupil, on the child protection register, transfers to another school:

- the DSL will contact the child's previous or new school
- the case social worker will be contacted by the DSL;
- child protection records will be passed on to the Safeguarding Lead at the receiving school only if that school is in the same Local Authority;
- if the child is moving to another Local Authority, then information will only be passed on with outline details of case conferences but not minutes of conferences.

### **Role of the Governing Body**

The governing board will:

- Facilitate a whole-school approach to safeguarding, ensuring that safeguarding and child protection are at the forefront and underpin all relevant aspects of process and policy development
- Evaluate and approve this policy at each review, ensuring it complies with the law, and hold the headteacher to account for its implementation
- Appoint a lead/s to monitor the effectiveness of this policy in conjunction with the full governing board. This is always a different person from the DSL.

The chair of governors will act as the 'case manager' in the event that an allegation of abuse is made against the headteacher, where appropriate.

All governors will read Keeping Children Safe in Education in its entirety.

### **The Governing Body:**

- has in place a Safeguarding and Child Protection policy and other related procedures;
- has appointed a member of staff to act as the Designated Safeguarding Lead (Catherine Amaioua);
- has nominated a governor (Julia Diaz and Gerard Dineen) to liaise with the Designated Safeguarding Lead;
- has delegated powers and responsibilities to the Head Teacher to ensure everyone connected with the school is aware of and complies with this policy;
- has in place safe recruitment procedures, including appropriate use of reference checks on new staff and volunteers;
- has in place procedures to deal with allegations of abuse against members of staff and volunteers (see Allegation Against a Professional policy)
- has undertaken appropriate training about the ways of safeguarding children, which will be updated annually;
- will ensure that the Head Teacher, school personnel and volunteers undertake safeguarding training annually;
- will annually review all safeguarding policies and procedures;
- will receive termly reports from the Head Teacher on safeguarding pupils in the school;
- has responsibility for the effective implementation, monitoring and evaluation of this policy
- has the responsibility for ensuring that the school complies with all equalities legislation;
- has responsibility for ensuring funding is in place to support this policy;
- has responsibility for ensuring this policy and all policies are maintained and updated regularly;
- has responsibility for ensuring all policies are made available to parents;
- has nominated a link governor (Julia Diaz) to visit the school regularly, to liaise with the Head Teacher and the Designated Safeguarding Lead and to report back to the Governing Body

### **Role of the Head Teacher**

The headteacher is responsible for the implementation of this policy, including:

- Ensuring that staff (including temporary staff) and volunteers:
  - Are informed of our systems which support safeguarding, including this policy, as part of their induction



- Understand and follow the procedures included in this policy, particularly those concerning referrals of cases of suspected abuse and neglect
- Communicating this policy to parents/carers when their child joins the school and via the school website
- Ensuring that the DSL has appropriate time, funding, training and resources, and that there is always adequate cover if the DSL is absent
- Ensuring that all staff undertake appropriate safeguarding and child protection training, and updating the content of the training regularly
- Acting as the 'case manager' in the event of an allegation of abuse made against another member of staff or volunteer, where appropriate
- Ensuring the relevant staffing ratios are met, where applicable
- Making sure each child in the Early Years Foundation Stage is assigned a key person

#### **The Head Teacher will:**

- ensure the implementation of this policy, all procedures and other related policies ensure everyone connected with the school is aware of this policy;
- work closely with the designated teacher and nominated governor for child protection;
- provide adequate resources for the designated teacher to undertake his/her role;
- ensure DBS checks are undertaken for everyone working with children in the school;
- ensure that all school personnel and volunteers are able to highlight improvements to the safeguarding policies and procedures;
- ensure that all new staff undertake training in child protection procedures;
- regularly report to the governing body and keep them updated;
- undertake training in safeguarding and child protection for all staff and governors
- provide leadership and vision in respect of equality;
- provide guidance, support and training to all staff;
- monitor the effectiveness of this policy;
- report annually to the governing body on the effectiveness of the policy

#### **Role of the Nominated Governor**

##### **The Nominated Governors will:**

- work closely with the Head Teacher and the Designated Safeguarding Lead;
- ensure policies and systems fulfil all safeguarding and child protection responsibilities and are consistent with Local Authority guidelines and LSCB procedures;
- take responsibility for taking action according to Local Authority procedures where there are allegations against the Head Teacher;
- ensure recruitment of school personnel and volunteers is in line with the Safe Recruitment policy;
- undertake safeguarding training annually

#### **Role of the Local Authority Designated Officer**

##### **The Local Authority Designated Officer (Paul Andrews) will:**

- ensure safeguarding procedures are correctly applied and implemented throughout the Local Authority;
- provide advice, information and guidance to personnel in the Local Authority;
- be responsible for updating the Local Authority policy for safeguarding and child protection;
- work closely with Social Services, the Police, Health professional and all other agencies;
- be the key link to Social Services or the Police during and following formal investigations;
- monitor the progress of cases to ensure that they following the appropriate procedures;
- keep up to date with all changes in legislation;

- will be the Local Authority representative on the LSCB

### Role of School Personnel & Volunteers

#### School personnel and volunteers must:

- recognise that safeguarding is their main responsibility;
- treat children's welfare with utmost importance;
- be aware of the background of the children in their care;
- be aware of the names of the designated teachers;
- be trained in identifying signs of harm and abuse;
- be aware of the effects of abuse and neglect on children;
- undertake training on responding to a child;
- be alert at all times to the signs of abuse namely **physical, emotional, sexual or neglect** including between school staff and children
- know how to report any suspected case of harm or abuse;
- report any concerns straight away to the head-teacher, designated person or the deputy designated person through EdAware (the school's digital safeguarding system) **including concerns related to behaviour and conduct of a staff member towards a child/children, by a member of staff, supply staff member, volunteer or governor using the cause for concern form**
- know what to do if a child makes a disclosure;
- receive support and counselling if they feel distressed from being involved with a case or incident;
- be kept up to date with changes in procedures;
- ensure that they conduct themselves correctly at all times and do not put themselves at risk;
- implement the school's equalities policy and schemes;
- report and deal with all incidents of discrimination;
- attend appropriate training sessions on equality;
- report any concerns they have on any aspect of the school community

### Role of Pupils

#### Pupils must be made aware of:

- basic safeguarding procedures in school such as visitors signing in and wearing visitor badges;
- how to keep themselves safe

#### They will be asked their views, such as:

- Do they feel safe in school?
- Are pupils aware of how to keep themselves safe?
- Do they know who to go to if they are concerned about their own safety or that of others?
- Are they aware of e-safety?
- Do they know how to keep themselves safe outside school?
- Do they know how to keep themselves safe when using the Internet?

### Role of Parents

#### Parents are:

- asked to work hard with the school to establish excellent home-school relationships;
- aware that we have a responsibility for the welfare of all of our pupils;
- aware that we have a duty to involve Social Services if we have any concerns about a child;
- aware they will be informed of our actions.

#### Annually we will ask parents if:

- they have any concerns about the safety of their child when in school;
- they feel enough time is given for children to learn how to keep safe;
- they know who to talk to if they have any concerns;
- they feel their views are listened to and acted upon.

## Partnerships with Parents

### The DSL:

- will ensure that parents are aware of this policy using the website
- will respect parents and children's need for privacy;
- will respect families from different backgrounds and cultures as long as it does not put the child at risk;
- when making a referral, will share all information with parents unless it places the child at risk.

## 6. Confidentiality

Staff have the professional responsibility to share relevant information about the protection of pupils with other professionals, particularly investigating agencies. If a pupil confides in a member of staff and requests that the information is kept secret, it is important that the member of staff tells the child sensitively that he/she has a responsibility to refer if it means keeping the child safe. Within that context, the child should be reassured that the matter will be disclosed only to the people who need to know. Staff who receive the information about pupils and families in the course of their work should have the information only within professional context. Child protection records are stored securely on the electronic safeguarding system, Edaware, Personal information about all pupils' and their families is regarded by those who work in this school as confidential. All staff will aim to maintain this confidentiality, all records relating to child protection incidents will be maintained by the Designated Safeguarding Lead and only shared as is consistent with the protection of pupils. This also applies to a therapists/counsellors working at school through Ealing Schools Counselling Partnership.

It is imperative that confidentiality is observed at all times as the protection of the child is paramount. School personnel have a professional responsibility to share information with other professionals who are investigating a case. All child protection records are regarded as confidential and will be kept in a secure place.

- Timely information sharing is essential to effective safeguarding
- Fears about sharing information must not be allowed to stand in the way of the need to promote the welfare, and protect the safety, of children
- The Data Protection Act (DPA) 2018 and UK GDPR do not prevent, or limit, the sharing of information for the purposes of keeping children safe
- If staff need to share 'special category personal data', the DPA 2018 contains 'safeguarding of children and individuals at risk' as a processing condition that allows practitioners to share information without consent if it is not possible to gain consent, it cannot be reasonably expected that a practitioner gains consent, or if to gain consent would place a child at risk
- Staff should never promise a child that they will not tell anyone about a report of abuse, as this may not be in the child's best interests
- The government's [information sharing advice for safeguarding practitioners](#) includes 7 'golden rules' for sharing information, and will support staff who have to make decisions about sharing information
- If staff are in any doubt about sharing information, they should speak to the designated safeguarding lead (or deputy)

## 7. Recognising Abuse, Reporting Concerns and Taking Action

Staff, volunteers and governors must follow the procedures set out below in the event of a safeguarding issue. All concerns must be reported and discussed immediately. The Designated Safeguarding Lead will decide the appropriate action in consultation with the Head Teacher.

Please note – in this and subsequent sections, you should take any references to the DSL to mean the DSL or deputy DSL.

### **If a child is suffering or likely to suffer harm, or in immediate danger**

If a pupil makes a disclosure to a teacher or other member of staff or adult that gives rise to concerns about possible abuse, or if a member of staff believes a child is in immediate danger or at risk of harm, the member of

staff must act promptly. He/she should not investigate but should speak to the DSL immediately. If speaking to the DSL will unduly delay the process, the member of staff should make a referral to children’s services and/or police immediately. Make a referral to children’s social care and/or the police **immediately** if you believe a child is suffering or likely to suffer from harm, or is in immediate danger. **Anyone can make a referral; however, it would usually fall to the DSL.** If a referral is made without the DSL’s knowledge, the DSL should be informed as soon as possible. All concerns, discussions and decisions made, and the reasons for those decisions should be recorded in writing on Edaware.

**If a child makes a disclosure**

If a pupil makes a **disclosure about abuse either by an adult or a child**, then the member of the school personnel must:

- Listen to and believe them. Allow them time to talk freely and do not ask leading questions
- Stay calm and do not show that you are shocked or upset
- Offer reassurance. Tell the child they have done the right thing in telling you. Do not tell them they should have told you sooner
- Explain what will happen next and that you will have to pass this information on.
- Record accurately and factually what the child has said in note form;
- Write up your conversation as soon as possible in the child’s own words. Stick to the facts, and do not put your own judgement on it
- Sign and date the write-up and pass it on to the DSL. Alternatively, if appropriate, make a referral to children’s social care and/or the police directly (see 7.1), and tell the DSL as soon as possible that you have done so. Aside from these people, do not disclose the information to anyone else unless told to do so by a relevant authority involved in the safeguarding process
- Submit an electronic completed cause for concern sheet on Edaware to the designated person as soon as possible that day and ensure that they have seen it be speaking face to face or using the internal telephones. The head teacher or designated person will seek advice from the Local Authority Designated Officer if necessary

School Personnel **must not**:

- ask the pupil to remove or adjust clothing if bruises are observed;
- ask leading questions;
- offer opinion, criticism or blame;
- promise to keep it a secret
- promise confidentiality but inform them that other people need to be told;

If a member of the school personnel **suspects that a child may be a victim of abuse**, then they must:

- record accurately and factually what they have seen in note form;
- submit an electronic completed cause for concern form on Edaware that is instantly emailed to the designated person and head-teacher and ensure that they have seen it be speaking face to face or using the internal telephones.

School personnel and volunteer helpers are asked to record any concern or incident on EdAware with the following information:

Date	All facts
Time	Observed injuries and bruises
Place	Note the actual words of the child
Nature of the concern	Submit the electric form to the DSL on the day
Class	

The designated person will then:

- further investigate and keep records of this investigation;
- meet with parents
- decide whether to take this referral further or to monitor the situation;
- prepare the following information on the child for a **case conference/core group meeting** or strategy meeting:
  - attendance and punctuality data
  - achievement
  - child's behaviour and attitude
  - relationships and social skills
  - appearance and presentation
  - any known incidents in or outside school
  - school contact with parents/carers

#### **If a parent makes a disclosure to school, then the DSL/ Head Teacher**

- should meet with the parent taking down all details;
- will assure the parent that the school will take the matter seriously;
- will have to take advice from the Local Authority Designated Officer about the disclosure;
- will get back to the parent when a decision has been taken and how to proceed

We will ensure that support mechanisms are in place for any child that is at risk in order to build their self-esteem and confidence. School personnel and volunteer helpers, who feel distressed from being involved with a case or incident, will receive support and counselling.

#### **The DSL will attend:**

- all Child Protection Case Conferences with the appropriate member of staff;
- all Core Group meetings once a child has been placed on the Safeguarding Register

#### **FGM**

Keeping Children Safe in Education explains that FGM comprises "all procedures involving partial or total removal of the external female genitalia, or other injury to the female genital organs".

FGM is illegal in the UK and a form of child abuse with long-lasting, harmful consequences. It is also known as 'female genital cutting', 'circumcision' or 'initiation'.

Possible indicators that a pupil has already been subjected to FGM, and factors that suggest a pupil may be at risk, are set out in appendix 4 of this policy.

**Any teacher** who either:

- Is informed by a girl under 18 that an act of FGM has been carried out on her; or
- Observes physical signs which appear to show that an act of FGM has been carried out on a girl under 18 and they have no reason to believe that the act was necessary for the girl's physical or mental health or for purposes connected with labour or birth

Must immediately report this to the police, personally. This is a mandatory statutory duty, and teachers will face disciplinary sanctions for failing to meet it.

Unless they have been specifically told not to disclose, they should also discuss the case with the DSL and involve children's social care as appropriate.

**Any other member of staff** who discovers that an act of FGM appears to have been carried out on a **pupil under 18** must speak to the DSL and follow our local safeguarding procedures.

The duty for teachers mentioned above does not apply in cases where a pupil is *at risk* of FGM or FGM is suspected but is not known to have been carried out. Staff should not examine pupils.

**Any member of staff** who suspects a pupil is *at risk* of FGM or suspects that FGM has been carried out must speak to the DSL and follow our local safeguarding procedures.

## **Concerns about a child (as opposed to believing a child is suffering or likely to suffer from harm, or is in immediate danger)**

Figure 1 below, before section 7.7, illustrates the procedure to follow if you have any concerns about a child's welfare.

Where possible, speak to the DSL first to agree a course of action.

If, in exceptional circumstances the DSL is not available, this should not delay appropriate action being taken.

Speak to a member of the senior leadership team and/or take advice from local authority children's social care.

You can also seek advice at any time from the NSPCC helpline on 0808 800 5000. Share details of any actions you take with the DSL as soon as practically possible.

Make a referral to local authority children's social care directly, if appropriate. Share any action taken with the DSL as soon as possible.

### **Early help**

If early help is appropriate, the DSL will generally lead on liaising with other agencies and setting up an inter-agency assessment as appropriate. Staff may be required to support other agencies and professionals in an early help assessment, in some cases acting as the lead practitioner.

The DSL will keep the case under constant review and the school will consider a referral to local authority children's social care if the situation does not seem to be improving. Timelines of interventions will be monitored and reviewed.

### **Referral**

If it is appropriate to refer the case to local authority children's social care or the police, the DSL will make the referral or support you to do so.

If you make a referral directly, you must tell the DSL as soon as possible.

The local authority should make a decision within 1 working day of a referral about what course of action to take and will let the person who made the referral know the outcome. The DSL or person who made the referral must follow up with the local authority if this information is not made available, and ensure outcomes are properly recorded.

If the child's situation does not seem to be improving after the referral, the DSL or person who made the referral must follow local escalation procedures to ensure their concerns have been addressed and that the child's situation improves.

### **Extremism**

If a child is not suffering or likely to suffer from harm, or in immediate danger, where possible speak to the DSL first to agree a course of action.

If in exceptional circumstances the DSL is not available, this should not delay appropriate action being taken.

Speak to a member of the senior leadership team and/or seek advice from local authority children's social care.

Make a referral to local authority children's social care directly, if appropriate. Inform the DSL or deputy as soon as practically possible after the referral.

Where there is a concern, the DSL will consider the level of risk and decide which agency to make a referral to.

This could include [Channel](#), the government's programme for identifying and supporting individuals at risk of being drawn into terrorism, or the local authority children's social care team.

The Department for Education also has a dedicated telephone helpline, 020 7340 7264, which school staff and governors can call to raise concerns about extremism with respect to a pupil. You can also email [counter.extremism@education.gov.uk](mailto:counter.extremism@education.gov.uk). Note that this is not for use in emergency situations.

In an emergency, call 999 or the confidential anti-terrorist hotline on 0800 789 321 if you:

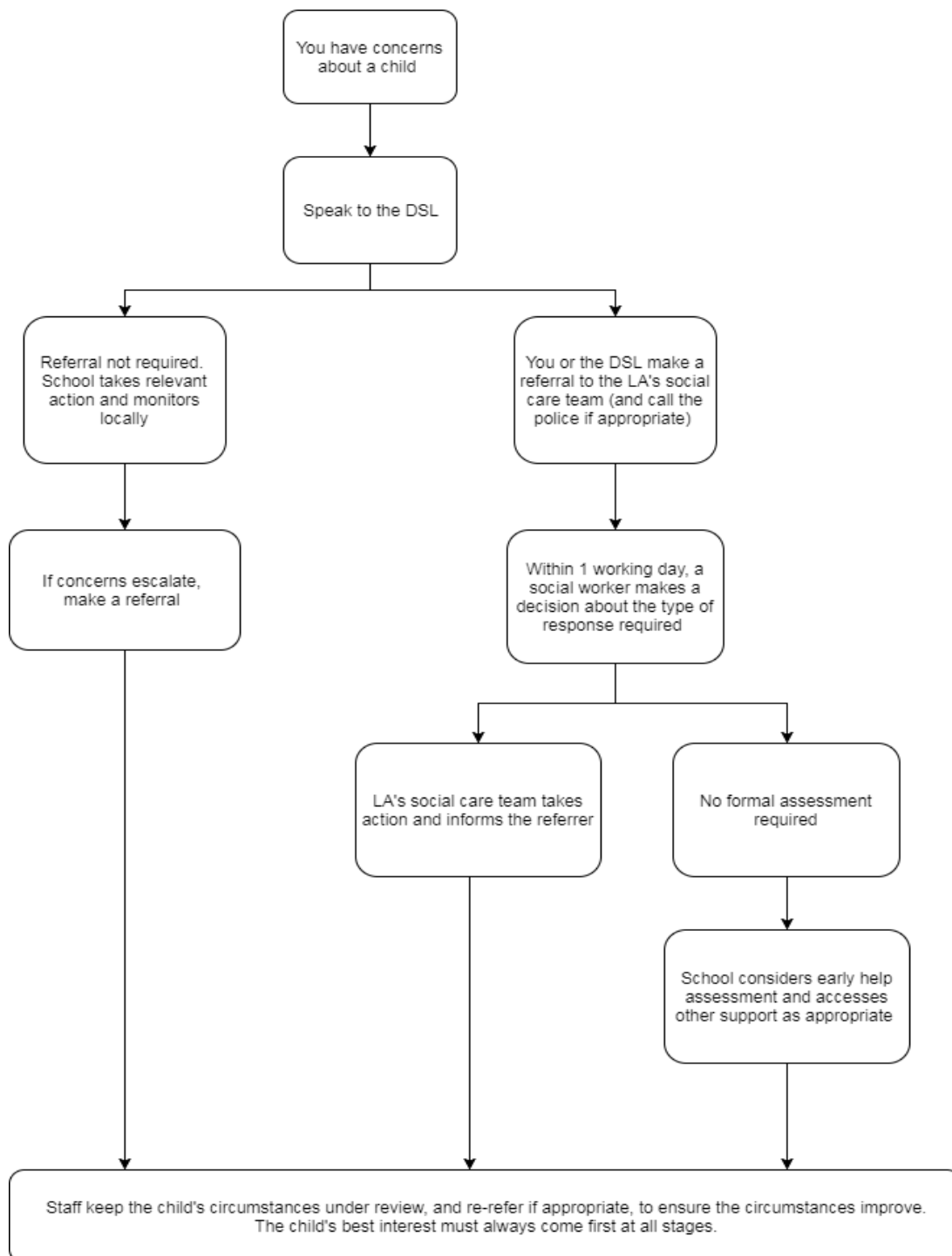
- Think someone is in immediate danger
- Think someone may be planning to travel to join an extremist group
- See or hear something that may be terrorist-related

## Mental health concerns

Mental health problems can, in some cases, be an indicator that a child has suffered or is at risk of suffering abuse, neglect or exploitation. Staff will be alert to behavioural signs that suggest a child may be experiencing a mental health problem or be at risk of developing one. If you have a mental health concern about a child that is also a safeguarding concern, take immediate action. If you have a mental health concern that is **not** also a safeguarding concern, speak to the DSL to agree a course of action.

**Figure 1: procedure if you have concerns about a child's welfare (as opposed to believing a child is suffering or likely to suffer from harm, or in immediate danger)**

(Note – if the DSL is unavailable, this should not delay action. See section 7 on what to do.)



### **Concerns about a staff member, supply teacher, volunteer or contractor**

If you have concerns about a member of staff (including a supply teacher, volunteer or contractor), or an allegation is made about a member of staff (including a supply teacher, volunteer or contractor) posing a risk of harm to children, speak to the headteacher as soon as possible. If the concerns/allegations are about the headteacher, speak to the chair of governors.

The headteacher/chair of governors will then follow the procedures

Where you believe there is a conflict of interest in reporting a concern or allegation about a member of staff (including a supply teacher, volunteer or contractor) to the headteacher, report it directly to the local authority designated officer (LADO).

Where appropriate, the school will inform Ofsted of the allegation and actions taken, within the necessary timescale.

### **Allegations of abuse made against other pupils**

We recognise that children are capable of abusing their peers. Abuse will never be tolerated or passed off as 'banter', 'just having a laugh' or 'part of growing up', as this can lead to a culture of unacceptable behaviours and an unsafe environment for pupils.

We also recognise the gendered nature of peer-on-peer abuse. However, all peer-on-peer abuse is unacceptable and will be taken seriously.

Most cases of pupils hurting other pupils will be dealt with under our school's behaviour policy, but this child protection and safeguarding policy will apply to any allegations that raise safeguarding concerns.

This might include where the alleged behaviour:

- Is serious, and potentially a criminal offence
- Could put pupils in the school at risk
- Is violent
- Involves pupils being forced to use drugs or alcohol
- Involves sexual exploitation, sexual abuse or sexual harassment, such as indecent exposure, sexual assault, upskirting or sexually inappropriate pictures or videos (including the sharing of nudes and semi-nudes)

See appendix 4 for more information about peer-on-peer abuse.

### **Procedures for dealing with allegations of peer-on-peer abuse**

If a pupil makes an allegation of abuse against another pupil:

- You must record the allegation and tell the DSL, but do not investigate it
- The DSL will contact the local authority children's social care team and follow its advice, as well as the police if the allegation involves a potential criminal offence
- The DSL will put a risk assessment and support plan into place for all children involved (including the victim(s), the child(ren) against whom the allegation has been made and any others affected) with a named person they can talk to if needed
- The DSL will contact the children and adolescent mental health services (CAMHS), if appropriate

### **Creating a supportive environment in school and minimising the risk of peer-on-peer abuse**

We recognise the importance of taking proactive action to minimise the risk of peer-on-peer abuse, and of creating a supportive environment where victims feel confident in reporting incidents.



To achieve this, we will:

- Challenge any form of derogatory or sexualised language or inappropriate behaviour between peers, including requesting or sending sexual images
- Be vigilant to issues that particularly affect different genders – for example, sexualised or aggressive touching or grabbing towards female pupils, and initiation or hazing type violence with respect to boys
- Ensure our curriculum helps to educate pupils about appropriate behaviour and consent
- Ensure pupils are able to easily and confidently report abuse using our reporting systems
- Ensure staff reassure victims that they are being taken seriously
- Ensure staff are trained to understand:
  - How to recognise the indicators and signs of peer-on-peer abuse, and know how to identify it and respond to reports
  - That even if there are no reports of peer-on-peer abuse in school, it does not mean it is not happening – staff should maintain an attitude of “it could happen here”
  - That if they have any concerns about a child’s welfare, they should act on them immediately rather than wait to be told, and that victims may not always make a direct report. For example:
    - Children can show signs or act in ways they hope adults will notice and react to
    - A friend may make a report
    - A member of staff may overhear a conversation
    - A child’s behaviour might indicate that something is wrong
  - That certain children may face additional barriers to telling someone because of their vulnerability, disability, gender, ethnicity and/or sexual orientation
  - That a pupil harming a peer could be a sign that the child is being abused themselves, and that this would fall under the scope of this policy
  - The important role they have to play in preventing peer-on-peer abuse and responding where they believe a child may be at risk from it
  - That they should speak to the DSL if they have any concerns

### **Sharing of nudes and semi-nudes (‘sexting’)**

#### **Your responsibilities when responding to an incident**

If you are made aware of an incident involving the consensual or non-consensual sharing of nude or semi-nude images/videos (also known as ‘sexting’ or ‘youth produced sexual imagery’), you must report it to the DSL immediately.

You must **not**:

- View, copy, print, share, store or save the imagery yourself, or ask a pupil to share or download it (if you have already viewed the imagery by accident, you must report this to the DSL)
- Delete the imagery or ask the pupil to delete it
- Ask the pupil(s), who are involved in the incident, to disclose information regarding the imagery (this is the DSL’s responsibility)

- Share information about the incident with other members of staff, the pupil(s) it involves or their, or other, parents and/or carers
- Say or do anything to blame or shame any young people involved

You should explain that you need to report the incident, and reassure the pupil(s) that they will receive support and help from the DSL.

### **Initial review meeting**

Following a report of an incident, the DSL will hold an initial review meeting with appropriate school staff – this may include the staff member who reported the incident and the safeguarding or leadership team that deals with safeguarding concerns. This meeting will consider the initial evidence and aim to determine:

- Whether there is an immediate risk to pupil(s)
- If a referral needs to be made to the police and/or children's social care
- If it is necessary to view the image(s) in order to safeguard the young person (in most cases, images or videos should not be viewed)
- What further information is required to decide on the best response
- Whether the image(s) has been shared widely and via what services and/or platforms (this may be unknown)
- Whether immediate action should be taken to delete or remove images or videos from devices or online services
- Any relevant facts about the pupils involved which would influence risk assessment
- If there is a need to contact another school, college, setting or individual
- Whether to contact parents or carers of the pupils involved (in most cases parents/carers should be involved)

The DSL will make an immediate referral to police and/or children's social care if:

- The incident involves an adult
- There is reason to believe that a young person has been coerced, blackmailed or groomed, or if there are concerns about their capacity to consent (for example owing to special educational needs)
- What the DSL knows about the images or videos suggests the content depicts sexual acts which are unusual for the young person's developmental stage, or are violent
- The imagery involves sexual acts and any pupil in the images or videos is under 13
- The DSL has reason to believe a pupil is at immediate risk of harm owing to the sharing of nudes and semi-nudes (for example, the young person is presenting as suicidal or self-harming)

If none of the above apply then the DSL, in consultation with the headteacher and other members of staff as appropriate, may decide to respond to the incident without involving the police or children's social care. The decision will be made and recorded in line with the procedures set out in this policy.

### **Further review by the DSL**

If at the initial review stage a decision has been made not to refer to police and/or children's social care, the DSL will conduct a further review to establish the facts and assess the risks.

They will hold interviews with the pupils involved (if appropriate).

If at any point in the process there is a concern that a pupil has been harmed or is at risk of harm, a referral will be made to children's social care and/or the police immediately.

### **Informing parents/carers**

The DSL will inform parents/carers at an early stage and keep them involved in the process, unless there is a good reason to believe that involving them would put the pupil at risk of harm.

### **Referring to the police**

If it is necessary to refer an incident to the police, this will be done through the safer schools officer, a police community support officer, local neighbourhood police or dialling 101.

### **Recording incidents**

All incidents of sharing of nudes and semi-nudes, and the decisions made in responding to them, will be recorded. The record-keeping arrangements set out in section 14 of this policy also apply to recording these incidents.

### **Reporting systems**

Where there is a safeguarding concern, we will take the child's wishes and feelings into account when determining what action to take and what services to provide.

We recognise the importance of ensuring pupils feel safe and comfortable to come forward and report any concerns and/or allegations.

To achieve this, we will:

- Put systems in place for pupils to confidently report abuse
- Ensure our reporting systems are well promoted, easily understood and easily accessible for pupils
- Make it clear to pupils that their concerns will be taken seriously, and that they can safely express their views and give feedback
- Our pupils should know and understand that they can report their concerns to any member of staff at the school. This is made clear through discussions in your relationship/sex education curriculum and through circle time.

### **Online safety and the use of mobile technology**

We recognise the importance of safeguarding children from potentially harmful and inappropriate online material, and we understand that technology is a significant component in many safeguarding and wellbeing issues.

To address this, our school aims to:

- Have robust processes in place to ensure the online safety of pupils, staff, volunteers and governors
- Protect and educate the whole school community in its safe and responsible use of technology, including mobile and smart technology (which we refer to as 'mobile phones')
- Set clear guidelines for the use of mobile phones for the whole school community
- Establish clear mechanisms to identify, intervene in and escalate any incidents or concerns, where appropriate

### **The 4 key categories of risk:**

Our approach to online safety is based on addressing the following categories of risk:

- **Content** – being exposed to illegal, inappropriate or harmful content, such as pornography, fake news, racism, misogyny, self-harm, suicide, anti-Semitism, radicalisation and extremism
- **Contact** – being subjected to harmful online interaction with other users, such as peer-to-peer pressure, commercial advertising and adults posing as children or young adults with the intention to groom or exploit them for sexual, criminal, financial or other purposes

- **Conduct** – personal online behaviour that increases the likelihood of, or causes, harm, such as making, sending and receiving explicit images (e.g. consensual and non-consensual sharing of nudes and semi-nudes and/or pornography), sharing other explicit images and online bullying; and
- **Commerce** – risks such as online gambling, inappropriate advertising, phishing and/or financial scams

**To meet our aims and address the risks above we will:**

- Educate pupils about online safety as part of our curriculum. For example:
  - The safe use of social media, the internet and technology
  - Keeping personal information private
  - How to recognise unacceptable behaviour online
  - How to report any incidents of cyber-bullying, ensuring pupils are encouraged to do so, including where they are a witness rather than a victim
  - Through the children’s voice group led (OSAs – Online Safety Ambassadors) by the computing lead – Elizabeth Wareing.
- Train staff, as part of their induction, on safe internet use and online safeguarding issues including cyber-bullying and the risks of online radicalisation. All staff members will receive refresher training at least once each academic year
- Educate parents/carers about online safety via our website, communications sent directly to them and during parents’ evenings. We will also share clear procedures with them so they know how to raise concerns about online safety
- Make sure staff are aware of any restrictions placed on them with regards to the use of their mobile phone and cameras, for example that:
  - Staff are allowed to bring their personal phones to school for their own use, but will limit such use to non-contact time when pupils are not present
  - Staff will not take pictures or recordings of pupils on their personal phones or cameras
- Make all pupils, parents/carers, staff, volunteers and governors aware that they are expected to sign an agreement regarding the acceptable use of the internet in school, use of the school’s ICT systems and use of their mobile and smart technology
- Explain the sanctions we will use if a pupil is in breach of our policies on the acceptable use of the internet and mobile phones
- Make sure all staff, pupils and parents/carers are aware that staff have the power to search pupils’ phones, as set out in the [DfE’s guidance on searching, screening and confiscation](#)
- Put in place robust filtering and monitoring systems to limit children’s exposure to the 4 key categories of risk (described above) from the school’s IT systems

This section summarises our approach to online safety and mobile phone use. For comprehensive details about our school’s policy on online safety and the use of mobile phones, please refer to our online safety policy and mobile phone policy, which you can find on our website.

## **9. Notifying parents or carers**

Where appropriate, we will discuss any concerns about a child with the child’s parents or carers. The DSL will normally do this in the event of a suspicion or disclosure. Other staff will only talk to parents or carers about any such concerns following consultation with the DSL.

If we believe that notifying the parents or carers would increase the risk to the child, we will discuss this with the local authority children's social care team before doing so.

In the case of allegations of abuse made against other children, we will normally notify the parents or carers of all the children involved.

#### **10. Pupils with special educational needs, disabilities or health issues**

We recognise that pupils with special educational needs (SEN) or disabilities or certain health conditions can face additional safeguarding challenges. Additional barriers can exist when recognising abuse and neglect in this group, including:

- Assumptions that indicators of possible abuse such as behaviour, mood and injury relate to the child's condition without further exploration
- Pupils being more prone to peer group isolation or bullying (including prejudice-based bullying) than other pupils
- The potential for pupils with SEN, disabilities or certain health conditions being disproportionately impacted by behaviours such as bullying, without outwardly showing any signs
- Communication barriers and difficulties in managing or reporting these challenges

#### **11. Pupils with a social worker**

Pupils may need a social worker due to safeguarding or welfare needs. We recognise that a child's experiences of adversity and trauma can leave them vulnerable to further harm as well as potentially creating barriers to attendance, learning, behaviour and mental health.

The DSL and all members of staff will work with and support social workers to help protect vulnerable children.

Where we are aware that a pupil has a social worker, the DSL will always consider this fact to ensure any decisions are made in the best interests of the pupil's safety, welfare and educational outcomes. For example, it will inform decisions about:

- Responding to unauthorised absence or missing education where there are known safeguarding risks
- The provision of pastoral and/or academic support

#### **12. Looked-after and previously looked-after children**

We will ensure that staff have the skills, knowledge and understanding to keep looked-after children and previously looked-after children safe. In particular, we will ensure that:

- Appropriate staff have relevant information about children's looked after legal status, contact arrangements with birth parents or those with parental responsibility, and care arrangements
- The DSL has details of children's social workers and relevant virtual school heads

The DSL/ Deputy DSL is responsible for promoting the educational achievement of looked-after children and previously looked-after children in line with [statutory guidance](#).

The DSL will ensure that any safeguarding concerns regarding looked-after and previously looked-after children are quickly and effectively responded to and work with virtual school heads to promote the educational achievement of looked-after and previously looked-after children, including discussing how pupil premium plus funding can be best used to support looked-after children and meet the needs identified in their personal education plans.

## **13. Complaints and concerns about school safeguarding policies**

### **Complaints against staff**

Complaints against staff that are likely to require a child protection investigation will be handled in accordance with our procedures for dealing with allegations of abuse made against staff (see appendix 3).

### **Other Complaints**

See Complaints Policy

### **Whistle-blowing**

See Whistle-Blowing Policy

## **14. Record-keeping**

We will hold records in line with our records retention schedule.

All safeguarding concerns, discussions, decisions made and the reasons for those decisions, must be recorded in writing. If you are in any doubt about whether to record something, discuss it with the DSL. Records will include:

- A clear and comprehensive summary of the concern
- Details of how the concern was followed up and resolved
- A note of any action taken, decisions reached and the outcome

Concerns and referrals will be kept in a separate child protection file for each child.

Any non-confidential records will be readily accessible and available. Confidential information and records will be held securely and only available to those who have a right or professional need to see them.

Safeguarding records relating to individual children will be retained for a reasonable period of time after they have left the school.

Safeguarding records which contain information about allegations of sexual abuse will be retained for the Independent Inquiry into Child Sexual Abuse (IICSA), for the term of the inquiry.

If a child for whom the school has, or has had, safeguarding concerns moves to another school, the DSL will ensure that their child protection file is forwarded promptly and securely, and separately from the main pupil file. In addition, if the concerns are significant or complex, and/or social services are involved, the DSL will speak to the DSL of the receiving school and provide information to enable them to have time to make any necessary preparations to ensure the safety of the child.

Records are stored on Edaware, the schools online reporting system. This system is secure with a two factor identification system to log in.

In addition:

- Appendix 2 sets out our policy on record-keeping specifically with respect to recruitment and pre-appointment checks
- Appendix 3 sets out our policy on record-keeping with respect to allegations of abuse made against staff

## **15. Training**

Training organised by the Local Safeguarding Children Board will take place for school personnel, volunteer helpers and governors:

- on induction to the school
- during NQT induction

- throughout the academic year

All school personnel must undertake appropriate training annually:

- safeguarding issues (completed 2<sup>nd</sup> September 2021)
- restraint training (January 2019)
- recognising signs of abuse (2<sup>nd</sup> September 2021)
- handling disclosures (2<sup>nd</sup> September 2021)
- PREVENT + FGM (2<sup>nd</sup> September 2020)

We ensure all school personnel have equal chances of training, career development and promotion. Periodic training will be organised for all school personnel so that they are kept up to date with new information and guide lines concerning equal opportunities.

### **All staff**

All staff members will undertake safeguarding and child protection training at induction, including on whistle-blowing procedures and online safety, to ensure they understand the school's safeguarding systems and their responsibilities, and can identify signs of possible abuse or neglect.

This training will be regularly updated and will:

- Be integrated, aligned and considered as part of the whole-school safeguarding approach and wider staff training, and curriculum planning
- Be in line with advice from the 3 safeguarding partners
- Have regard to the Teachers' Standards to support the expectation that all teachers:
  - Manage behaviour effectively to ensure a good and safe environment
  - Have a clear understanding of the needs of all pupils

All staff will have training on the government's anti-radicalisation strategy, Prevent, to enable them to identify children at risk of being drawn into terrorism and to challenge extremist ideas.

Staff will also receive regular safeguarding and child protection updates, including on online safety, as required, but at least annually (for example, through emails, e-bulletins and staff meetings).

Kitchen staff, contracted in, will also receive safeguarding training.

Volunteers will receive appropriate training, if applicable.

### **The DSL and deputy**

The DSL deputy will undertake child protection and safeguarding training at least every 2 years.

In addition, they will update their knowledge and skills at regular intervals and at least annually (for example, through e-bulletins, meeting other DSLs, or taking time to read and digest safeguarding developments).

They will also undertake Prevent awareness training.

### **Governors**

All governors receive training about safeguarding, to make sure they have the knowledge and information needed to perform their functions and understand their responsibilities.

As the chair of governors may be required to act as the 'case manager' in the event that an allegation of abuse is made against the headteacher, they should attend training in managing allegations for this purpose.

## Recruitment – interview panels

At least one person conducting any interview for any post at the school will have undertaken safer recruitment training. This will cover, as a minimum, the contents of Keeping Children Safe in Education, and will be in line with local safeguarding procedures.

See appendix 2 of this policy for more information about our safer recruitment procedures.

## **Raising Awareness and Monitoring of this Policy**

We will raise awareness of this policy via:

- the school website
- meetings with parents such as during the induction and parent’s conferences
- meetings with school personnel
- Head Teacher reports to the Governing Body

The practical application of this policy will be reviewed annually or when the need arises by the coordinator, the Head Teacher and the nominated governor.

A statement of the policy's effectiveness and the necessary recommendations for improvement will be presented to the Governing Body for further discussion and endorsement.

<b>Important Telephone Numbers</b>	<b>Local Authority Designated Officer</b>	Paul Andrews asv@ealing.gov.uk <a href="mailto:child.protection@ealing.cjsm.net">child.protection@ealing.cjsm.net</a> 0208 825 8930
	<b>Out of Hours Social Services</b>	0208 825 8000
	<b>Police</b>	999/ 101

## Safeguarding at John Perryn Primary School

*Are you concerned about a child?*



If so, please speak to one of our safeguarding team.



Mrs. C Amaioua  
Designated  
Safeguarding Lead  
and SENCo



Ms. C Mulvany  
Deputy Designated  
Safeguarding Lead  
and Deputy Head



Ms. L Wright  
Designated  
safeguarding teacher  
and Headteacher



Ms. A Lebiszczak  
Designated  
safeguarding teacher  
and Assistant Head

If you have any safeguarding concerns about a child, you **must** report them to one of these people immediately either **FACE TO FACE** or using the internal phone system. School staff should also log all concerns onto Edaware.



# Covid-19 Addendum

## 1. Scope and definitions

This addendum applies during the period of school closure due to COVID-19 and beyond, and reflects updated advice from our 3 local safeguarding partners and local authority (LA), Ealing.

The Department for Education's (DfE's) definition of 'vulnerable children' includes those who:

- Have a social worker, including children:
  - With a child protection plan
  - Assessed as being in need or known to social services
  - Looked after by the local authority (LAC)
- Have an education, health and care (EHC) plan

## 2. Core safeguarding principles

We will still have regard to the statutory safeguarding guidance, Keeping Children Safe in Education 2021.

Although we may be operating in a different way to normal, we are still following these important safeguarding principles:

- The best interests of children must come first
- If anyone has a safeguarding concern about any child, they should continue to act on it immediately
- A designated safeguarding lead (DSL) or deputy should be available at all times
- It's essential that unsuitable people don't enter the school workforce or gain access to children
- Children should continue to be protected when they are online

## 3. Reporting concerns

All staff and volunteers must continue to act on any concerns they have about a child immediately. It is still vitally important to do this.

Standard reporting procedures apply with incidents being added on EdAware but reported to a Senior Leadership Team member on site in the event of an immediate concern.

As a reminder, all staff should continue to work with and support children's social workers, where they have one, to help protect vulnerable children.

## 4. DSL (and deputy) arrangements

We aim to have a trained DSL or deputy DSL on site wherever possible.

We will keep all school staff and volunteers informed by email as to who will be the DSL (or deputy) on any given day, and how to contact them.

We will ensure that DSLs (and deputies), wherever their location, know who the most vulnerable children in our school are.

The senior leader will be responsible for liaising with the off-site DSL (or deputy) to make sure they (the senior leader) can:

- Identify the most vulnerable children in school
- Update and manage access to child protection files, where necessary
- Liaise with children's social workers where they need access to children in need and/or to carry out statutory assessments

## **5. Working with other agencies**

We will continue to work with children's social care, and with virtual school heads for looked-after and previously looked-after children.

We will continue to update this addendum where necessary, to reflect any updated guidance from:

- Our 3 local safeguarding partners
- The local authority about children with education, health and care (EHC) plans, the local authority designated officer and children's social care, reporting mechanisms, referral thresholds and children in need

The following guidance is currently in place:

## **6. Monitoring attendance**

As schools are now reopened, we have reverted back to our usual policies and procedures (see Attendance Policy). Some children will be self-isolating due to Covid. As a school we will:

- Follow up on their absence with their parents or carers, by calling them if the child has not arrived at school and we have not been informed. If there is no answer, emergency contacts will be called and, if necessary a home visit, by a social worker or the Education Welfare Officer, may be arranged.
- Notify their social worker, where they have one

We are using the Department for Education's online attendance form to keep an accurate record of who is attending school.

We make arrangements with parents and carers to make sure we have up-to-date emergency contact details, and additional contact details where possible.

## **7. Peer-on-peer abuse**

We will continue to follow the principles set out in part 5 of Keeping Children Safe in Education 2021 when managing reports and supporting victims of peer-on-peer abuse.

Staff should continue to act on any concerns they have immediately.

Any incidents reported to school will be immediately reported to the parents of children involved and will be reported to any relevant agencies if necessary. Details of support services will be given to any affected children.

## **8. Concerns about a staff member or volunteer**

We will continue to follow the principles set out in part 4 of Keeping Children Safe in Education. Staff should continue to act on any concerns they have immediately.

In the event of an allegation against a member of staff, the safeguarding governor will be informed and the usual reporting and investigating procedures will apply where possible.

We will continue to refer adults who have harmed or pose a risk of harm to a child or vulnerable adult to the Disclosure and Barring Service (DBS).

We will continue to refer potential cases of teacher misconduct to the Teaching Regulation Agency. We will do this using the email address [Misconduct.Teacher@education.gov.uk](mailto:Misconduct.Teacher@education.gov.uk) for the duration of the COVID-19 period, in line with government guidance.

## **9. Support for children who aren't 'vulnerable' but where we have concerns**

In the event of further school closures, we have the option to offer places in school to children who don't meet the Department for Education's definition of 'vulnerable', but who we have safeguarding concerns about. We will work with parents/carers to do this. These children might be, for example, children who have previously had a social worker, who haven't met the threshold for a referral but where staff have raised concerns or who may be at risk due to long periods away from school.

If these children will not be attending school, we will put a contact plan in place, as explained in section 10.1 below.

## **10. Safeguarding for children not attending school**

### **10.1 Contact plans**

We have contact plans for children with a social worker and children who we have safeguarding concerns about, for circumstances where:

- They won't be attending school (for example where the school, parent/carer and social worker, if relevant, have decided together that this wouldn't be in the child's best interests); or
- They would usually attend but have to self-isolate

These plans set out:

- How often the school will make contact
- Which staff member(s) will make contact
- How they will make contact

We have agreed these plans with children's social care where relevant. If we can't make contact, we will contact children's social care or the police.

### **10.2 Safeguarding all children**

Staff and volunteers are aware that this difficult time potentially puts all children at greater risk. Staff and volunteers will continue to be alert to any signs of abuse, or effects on pupils' mental health that are also safeguarding concerns, and act on concerns immediately. In particular, children are likely to be spending more time online (see section 11 below).

## **11. Online safety**

### **11.1 In school**

We will continue to have appropriate filtering and monitoring systems in place in school, maintained by our IT provider Azteq.

## **11.2 Outside school**

Where staff are interacting with children online, they will continue to follow our existing staff code of conduct and IT acceptable use policy and our Remote Learning Policy.

Staff will follow these basic principles when using technology:

Any use of live video conferencing should be checked with a member of SLT first.

Recorded lessons should be uploaded to the class Seesaw account

Live video conferences should be carried out using Google Meet on the school G-Suite account, unless otherwise agreed with a senior leader.

Video conferencing must involve a minimum of 3 students.

Video conferences should be recorded and stored on the teacher's G-Suite Drive, which is part of the school G-Suite account. These videos will be deleted at the end of each term.

Staff should ensure pupils and parents at home are aware of and follow the 'Rules for live meetings and lessons; (see below)

If the staff member is recording a video from home, the room should not be easily identifiable as a bedroom.

Staff will continue to be alert to signs that a child may be at risk of harm online, and act on any concerns immediately, following our reporting procedures as set out in section 3 of this addendum.

We will make sure children know how to report any concerns they have back to our school, and signpost them to other sources of support too.

When video conferencing or communicating with children via video link, children can see the staff member but the member of staff must not be able to see them.

### **Rules for live meetings and lessons:**

1. One parent must be present and seen by class teacher at the beginning of the lesson to ensure that parent is aware of child participation. Parents can just wave and then leave but are welcome to stay in the room (but stay off camera please)
2. For safeguarding reasons, children should be in a communal space such as living room or kitchen. They should only be in a bedroom or closed room if there is no other suitable quiet space (and the responsible adult should be present at the start of the session)
3. Children should wear appropriate clothing (no pyjamas, underwear or swimsuits etc.) - they do not need to wear uniform.
4. Children must follow normal school rules of using respectful language and being kind to others.
5. If a child wants to ask a question or make a comment, they should raise their hand, just like in class, and wait for the teacher to allow them to speak.
6. Any child not following the rules will be removed from the lesson and the teacher will then decide whether to allow participation in the next meeting or lesson.

### **11.3 Working with parents and carers**

We will make sure parents and carers:

- Are aware of the potential risks to children online and the importance of staying safe online
- Know what our school is asking children to do online, including what sites they will be using and who they will be interacting with from our school
- Know where else they can go for support to keep their children safe online

### **12. Mental health**

We will continue to offer our current support for pupil mental health for all pupils.

We will also signpost all pupils, parents and staff to other resources to support good mental health at this time.

When setting expectations for pupils learning remotely and not attending school, teachers will bear in mind the potential impact of the current situation on both children's and adults' mental health.

### **13. Staff recruitment, training and induction**

#### **13.1 Recruiting new staff and volunteers**

We continue to recognise the importance of robust safer recruitment procedures, so that adults and volunteers who work in our school are safe to work with children.

We will continue to follow our safer recruitment procedures, and part 3 of Keeping Children Safe in Education.

In urgent cases, when validating proof of identity documents to apply for a DBS check, we will initially accept verification of scanned documents via online video link, rather than being in physical possession of the original documents. This approach is in line with revised guidance from the DBS.

New staff must still present the original documents when they first attend work at our school.

We will continue to do our usual checks on new volunteers, and do risk assessments to decide whether volunteers who aren't in regulated activity should have an enhanced DBS check, in accordance with Keeping Children Safe in Education.

#### **13.2 Staff 'on loan' from other schools**

We will assess the risks of staff 'on loan' working in our school, and seek assurance from the 'loaning' school that staff have had the appropriate checks. Risk assessments to be carried out by member of SLT on duty that week.

We will also use the DBS Update Service, where these staff have signed up to it, to check for any new information.

#### **13.3 Safeguarding induction and training**

We will make sure staff and volunteers are aware of changes to our procedures and local arrangements.

New staff and volunteers will continue to receive:

- A safeguarding induction
- A copy of our children protection policy (and this addendum)
- Keeping Children Safe in Education part 1

We will decide on a case-by-case basis what level of safeguarding induction staff 'on loan' need. In most cases, this will be:

- A copy of our child protection policy and this addendum
- Confirmation of local processes
- Confirmation of DSL arrangements
- Staff Code of Conduct

#### **13.4 Keeping records of who is on site**

We will keep a record of which staff and volunteers are on site each day, and that appropriate checks have been carried out for them.

We will continue to keep our single central record up to date.

We will use the single central record to log:

- Everyone working or volunteering in our school each day, including staff 'on loan'
- Details of any risk assessments carried out on staff and volunteers on loan from elsewhere

#### **14. Children attending other settings**

Where children are temporarily required to attend another setting, we will make sure the receiving school is provided with any relevant welfare and child protection information. Wherever possible, our DSL (or deputy) and/or special educational needs co-ordinator (SENCO) will share, as applicable:

- The reason(s) why the child is considered vulnerable and any arrangements in place to support them
- The child's EHC plan, child in need plan, child protection plan or personal education plan
- Details of the child's social worker
- Details of the virtual school head

Where the DSL, deputy or SENCO can't share this information, the senior leader(s) identified in section 4 will do this.

We will share this information before the child arrives as far as is possible, and otherwise as soon as possible afterwards.

#### **15. Monitoring arrangements**

This policy will be reviewed as guidance from the 3 local safeguarding partners, the LA or DfE is updated, and as a minimum every half term by Catherine Amaioua, DSL. At every review, it will be approved by the full governing board.

#### **16. Links with other policies**

This policy links to the following policies and procedures:

- Staff code of conduct
- IT acceptable use
- Health and safety
- Online safety
- Whistle blowing
- Anti-bullying
- SEND Policy

**These appendices are based on the Department for Education's statutory guidance, Keeping Children Safe in Education.**

Appendix 1: types of abuse

**Abuse**, including neglect, and safeguarding issues are rarely standalone events that can be covered by one definition or label. In most cases, multiple issues will overlap.

**Physical abuse** may involve hitting, shaking, throwing, poisoning, burning or scalding, drowning, suffocating or otherwise causing physical harm to a child. Physical harm may also be caused when a parent or carer fabricates the symptoms of, or deliberately induces, illness in a child.

**Emotional abuse** is the persistent emotional maltreatment of a child such as to cause severe and adverse effects on the child's emotional development. Some level of emotional abuse is involved in all types of maltreatment of a child, although it may occur alone.

Emotional abuse may involve:

- Conveying to a child that they are worthless or unloved, inadequate, or valued only insofar as they meet the needs of another person
- Not giving the child opportunities to express their views, deliberately silencing them or 'making fun' of what they say or how they communicate
- Age or developmentally inappropriate expectations being imposed on children. These may include interactions that are beyond a child's developmental capability, as well as overprotection and limitation of exploration and learning, or preventing the child participating in normal social interaction
- Seeing or hearing the ill-treatment of another
- Serious bullying (including cyber-bullying), causing children frequently to feel frightened or in danger, or the exploitation or corruption of children

**Sexual abuse** involves forcing or enticing a child or young person to take part in sexual activities, not necessarily involving a high level of violence, whether or not the child is aware of what is happening. The activities may involve:

- Physical contact, including assault by penetration (for example rape or oral sex) or non-penetrative acts such as masturbation, kissing, rubbing and touching outside of clothing
- Non-contact activities, such as involving children in looking at, or in the production of, sexual images, watching sexual activities, encouraging children to behave in sexually inappropriate ways, or grooming a child in preparation for abuse (including via the internet)

Sexual abuse is not solely perpetrated by adult males. Women can also commit acts of sexual abuse, as can other children.

**Neglect** is the persistent failure to meet a child's basic physical and/or psychological needs, likely to result in the serious impairment of the child's health or development. Neglect may occur during pregnancy as a result of maternal substance abuse.

Once a child is born, neglect may involve a parent or carer failing to:

- Provide adequate food, clothing and shelter (including exclusion from home or abandonment)
- Protect a child from physical and emotional harm or danger
- Ensure adequate supervision (including the use of inadequate care-givers)
- Ensure access to appropriate medical care or treatment

It may also include neglect of, or unresponsiveness to, a child's basic emotional needs.



## Appendix 2: safer recruitment and DBS checks – policy and procedures

### **Recruitment and selection process**

The recruitment steps outlined below are based on part 3 of Keeping Children Safe in Education.

To make sure we recruit suitable people, we will ensure that those involved in the recruitment and employment of staff to work with children have received appropriate safer recruitment training.

We have put the following steps in place during our recruitment and selection process to ensure we are committed to safeguarding and promoting the welfare of children.

#### **Advertising**

When advertising roles, we will make clear:

- Our school's commitment to safeguarding and promoting the welfare of children
- That safeguarding checks will be undertaken
- The safeguarding requirements and responsibilities of the role, such as the extent to which the role will involve contact with children
- Whether or not the role is exempt from the Rehabilitation of Offenders Act 1974 and the amendments to the Exceptions Order 1975, 2013 and 2020. If the role is exempt, certain spent convictions and cautions are 'protected', so they do not need to be disclosed, and if they are disclosed, we cannot take them into account

#### **Application forms**

Our application forms will:

- Include a statement saying that it is an offence to apply for the role if an applicant is barred from engaging in regulated activity relevant to children (where the role involves this type of regulated activity)
- Include a copy of, or link to, our child protection and safeguarding policy and our policy on the employment of ex-offenders

#### **Shortlisting**

Our shortlisting process will involve at least 2 people and will:

- Consider any inconsistencies and look for gaps in employment and reasons given for them
- Explore all potential concerns

Once we have shortlisted candidates, we will ask shortlisted candidates to:

- Complete a self-declaration of their criminal record or any information that would make them unsuitable to work with children, so that they have the opportunity to share relevant information and discuss it at interview stage. The information we will ask for includes:
  - If they have a criminal history
  - Whether they are included on the barred list
  - Whether they are prohibited from teaching
  - Information about any criminal offences committed in any country in line with the law as applicable in England and Wales
  - Any relevant overseas information
- Sign a declaration confirming the information they have provided is true

## **Seeking references and checking employment history**

We will obtain references before interview. Any concerns raised will be explored further with referees and taken up with the candidate at interview.

When seeking references we will:

- Not accept open references
- Liaise directly with referees and verify any information contained within references with the referees
- Ensure any references are from the candidate's current employer and completed by a senior person. Where the referee is school based, we will ask for the reference to be confirmed by the headteacher/principal as accurate in respect to disciplinary investigations
- Obtain verification of the candidate's most recent relevant period of employment if they are not currently employed
- Secure a reference from the relevant employer from the last time the candidate worked with children if they are not currently working with children
- Compare the information on the application form with that in the reference and take up any inconsistencies with the candidate
- Resolve any concerns before any appointment is confirmed

## **Interview and selection**

When interviewing candidates, we will:

- Probe any gaps in employment, or where the candidate has changed employment or location frequently, and ask candidates to explain this
- Explore any potential areas of concern to determine the candidate's suitability to work with children
- Record all information considered and decisions made

## **Pre-appointment vetting checks**

We will record all information on the checks carried out in the school's single central record (SCR). Copies of these checks, where appropriate, will be held in individuals' personnel files. We follow requirements and best practice in retaining copies of these checks, as set out below.

## **New staff**

All offers of appointment will be conditional until satisfactory completion of the necessary pre-employment checks. When appointing new staff, we will:

- Verify their identity
- Obtain (via the applicant) an enhanced DBS certificate, including barred list information for those who will be engaging in regulated activity (see definition below). We will obtain the certificate before, or as soon as practicable after, appointment, including when using the DBS update service. We will not keep a copy of the certificate for longer than 6 months, but when the copy is destroyed we may still keep a record of the fact that vetting took place, the result of the check and recruitment decision taken
- Obtain a separate barred list check if they will start work in regulated activity before the DBS certificate is available
- Verify their mental and physical fitness to carry out their work responsibilities

- Verify their right to work in the UK. We will keep a copy of this verification for the duration of the member of staff's employment and for 2 years afterwards
- Verify their professional qualifications, as appropriate
- Ensure they are not subject to a prohibition order if they are employed to be a teacher
- Carry out further additional checks, as appropriate, on candidates who have lived or worked outside of the UK. Where available, these will include:
  - For all staff, including teaching positions: [criminal records checks for overseas applicants](#)
  - For teaching positions: obtaining a letter of professional standing from the professional regulating authority in the country where the applicant has worked

We will ensure that appropriate checks are carried out to ensure that individuals are not disqualified under the 2018 Childcare Disqualification Regulations and Childcare Act 2006. Where we take a decision that an individual falls outside of the scope of these regulations and we do not carry out such checks, we will retain a record of our assessment on the individual's personnel file. This will include our evaluation of any risks and control measures put in place, and any advice sought.

**Regulated activity** means a person who will be:

- Responsible, on a regular basis in a school or college, for teaching, training, instructing, caring for or supervising children; or
- Carrying out paid, or unsupervised unpaid, work regularly in a school or college where that work provides an opportunity for contact with children; or
- Engaging in intimate or personal care or overnight activity, even if this happens only once and regardless of whether they are supervised or not

#### **Existing staff**

In certain circumstances we will carry out all the relevant checks on existing staff as if the individual was a new member of staff. These circumstances are when:

- There are concerns about an existing member of staff's suitability to work with children; or
- An individual moves from a post that is not regulated activity to one that is; or
- There has been a break in service of 12 weeks or more

We will refer to the DBS anyone who has harmed, or poses a risk of harm, to a child or vulnerable adult where:

- We believe the individual has engaged in [relevant conduct](#); or
- We believe the individual has received a caution or conviction for a relevant (automatic barring either with or without the right to make representations) offence, under the [Safeguarding Vulnerable Groups Act 2006 \(Prescribed Criteria and Miscellaneous Provisions\) Regulations 2009](#); or
- We believe the 'harm test' is satisfied in respect of the individual (i.e. they may harm a child or vulnerable adult or put them at risk of harm); and
- The individual has been removed from working in regulated activity (paid or unpaid) or would have been removed if they had not left

#### **Agency and third-party staff**

We will obtain written notification from any agency or third-party organisation that it has carried out the necessary safer recruitment checks that we would otherwise perform. We will also check that the person presenting themselves for work is the same person on whom the checks have been made.

## **Contractors**

We will ensure that any contractor, or any employee of the contractor, who is to work at the school has had the appropriate level of DBS check (this includes contractors who are provided through a PFI or similar contract). This will be:

- An enhanced DBS check with barred list information for contractors engaging in regulated activity
- An enhanced DBS check, not including barred list information, for all other contractors who are not in regulated activity but whose work provides them with an opportunity for regular contact with children

We will obtain the DBS check for self-employed contractors.

We will not keep copies of such checks for longer than 6 months.

Contractors who have not had any checks will not be allowed to work unsupervised or engage in regulated activity under any circumstances.

We will check the identity of all contractors and their staff on arrival at the school.

For self-employed contractors such as music teachers or sports coaches, we will ensure that appropriate checks are carried out to ensure that individuals are not disqualified under the 2018 Childcare Disqualification Regulations and Childcare Act 2006. Where we decide that an individual falls outside of the scope of these regulations and we do not carry out such checks, we will retain a record of our assessment. This will include our evaluation of any risks and control measures put in place, and any advice sought.

## **Trainee/student teachers**

Where applicants for initial teacher training are salaried by us, we will ensure that all necessary checks are carried out.

Where trainee teachers are fee-funded, we will obtain written confirmation from the training provider that necessary checks have been carried out and that the trainee has been judged by the provider to be suitable to work with children.

In both cases, this includes checks to ensure that individuals are not disqualified under the 2018 Childcare Disqualification Regulations and Childcare Act 2006.

## **Volunteers**

We will:

- Never leave an unchecked volunteer unsupervised or allow them to work in regulated activity
- Obtain an enhanced DBS check with barred list information for all volunteers who are new to working in regulated activity
- Carry out a risk assessment when deciding whether to seek an enhanced DBS check without barred list information for any volunteers not engaging in regulated activity. We will retain a record of this risk assessment
- Ensure that appropriate checks are carried out to ensure that individuals are not disqualified under the 2018 Childcare Disqualification Regulations and Childcare Act 2006. Where we decide that an individual falls outside of the scope of these regulations and we do not carry out such checks, we will retain a record of our assessment. This will include our evaluation of any risks and control measures put in place, and any advice sought

## **Governors**

All governors will have an enhanced DBS check without barred list information.

They will have an enhanced DBS check with barred list information if working in regulated activity.

All governors will also have a section 128 check (as a section 128 direction disqualifies an individual from being a maintained school governor).

**Staff working in alternative provision settings**

Where we place a pupil with an alternative provision provider, we obtain written confirmation from the provider that they have carried out the appropriate safeguarding checks on individuals working there that we would otherwise perform.

**Adults who supervise pupils on work experience**

When organising work experience, we will ensure that policies and procedures are in place to protect children from harm.

We will also consider whether it is necessary for barred list checks to be carried out on the individuals who supervise a pupil under 16 on work experience. This will depend on the specific circumstances of the work experience, including the nature of the supervision, the frequency of the activity being supervised, and whether the work is regulated activity.

**Pupils staying with host families**

Where the school makes arrangements for pupils to be provided with care and accommodation by a host family to which they are not related (for example, during a foreign exchange visit), we will request enhanced DBS checks with barred list information on those people.

Where the school is organising such hosting arrangements overseas and host families cannot be checked in the same way, we will work with our partner schools abroad to ensure that similar assurances are undertaken prior to the visit.

## Appendix 3: allegations of abuse made against staff

### **Section 1: allegations that may meet the harms threshold**

This section is based on 'Section 1: Allegations that may meet the harms threshold' in part 4 of Keeping Children Safe in Education.

This section applies to all cases in which it is alleged that a current member of staff, including a supply teacher, volunteer or contractor, has:

- Behaved in a way that has harmed a child, or may have harmed a child, and/or
- Possibly committed a criminal offence against or related to a child, and/or
- Behaved towards a child or children in a way that indicates he or she may pose a risk of harm to children, and/or
- Behaved or may have behaved in a way that indicates they may not be suitable to work with children – this includes behaviour taking place both inside and outside of school

We will deal with any allegation of abuse quickly, in a fair and consistent way that provides effective child protection while also supporting the individual who is the subject of the allegation.

A 'case manager' will lead any investigation. This will be the headteacher, or the chair of governors where the headteacher is the subject of the allegation. The case manager will be identified at the earliest opportunity.

Our procedures for dealing with allegations will be applied with common sense and judgement.

### **Suspension of the accused until the case is resolved**

Suspension of the accused will not be the default position, and will only be considered in cases where there is reason to suspect that a child or other children is/are at risk of harm, or the case is so serious that there might be grounds for dismissal. In such cases, we will only suspend an individual if we have considered all other options available and there is no reasonable alternative.

Based on an assessment of risk, we will consider alternatives such as:

- Redeployment within the school so that the individual does not have direct contact with the child or children concerned
- Providing an assistant to be present when the individual has contact with children
- Redeploying the individual to alternative work in the school so that they do not have unsupervised access to children
- Moving the child or children to classes where they will not come into contact with the individual, making it clear that this is not a punishment and parents/carers have been consulted
- Temporarily redeploying the individual to another role in a different location, for example to an alternative school or other work for the local authority

If in doubt, the case manager will seek views from the school's personnel adviser and the designated officer at the local authority, as well as the police and children's social care where they have been involved.

### **Definitions for outcomes of allegation investigations**

- **Substantiated:** there is sufficient evidence to prove the allegation
- **Malicious:** there is sufficient evidence to disprove the allegation and there has been a deliberate act to deceive, or to cause harm to the subject of the allegation
- **False:** there is sufficient evidence to disprove the allegation

- **Unsubstantiated:** there is insufficient evidence to either prove or disprove the allegation (this does not imply guilt or innocence)
- **Unfounded:** to reflect cases where there is no evidence or proper basis which supports the allegation being made

### Procedure for dealing with allegations

In the event of an allegation that meets the criteria above, the case manager will take the following steps:

- Conduct basic enquiries in line with local procedures to establish the facts to help determine whether there is any foundation to the allegation before carrying on with the steps below
- Discuss the allegation with the designated officer at the local authority. This is to consider the nature, content and context of the allegation and agree a course of action, including whether further enquiries are necessary to enable a decision on how to proceed, and whether it is necessary to involve the police and/or children's social care services. (The case manager may, on occasion, consider it necessary to involve the police *before* consulting the designated officer – for example, if the accused individual is deemed to be an immediate risk to children or there is evidence of a possible criminal offence. In such cases, the case manager will notify the designated officer as soon as practicably possible after contacting the police)
- Inform the accused individual of the concerns or allegations and likely course of action as soon as possible after speaking to the designated officer (and the police or children's social care services, where necessary). Where the police and/or children's social care services are involved, the case manager will only share such information with the individual as has been agreed with those agencies
- Where appropriate (in the circumstances described above), carefully consider whether suspension of the individual from contact with children at the school is justified or whether alternative arrangements such as those outlined above can be put in place. Advice will be sought from the designated officer, police and/or children's social care services, as appropriate
- Where the case manager is concerned about the welfare of other children in the community or the individual's family, they will discuss these concerns with the DSL and make a risk assessment of the situation. If necessary, the DSL may make a referral to children's social care
- **If immediate suspension is considered necessary**, agree and record the rationale for this with the designated officer. The record will include information about the alternatives to suspension that have been considered, and why they were rejected. Written confirmation of the suspension will be provided to the individual facing the allegation or concern within 1 working day, and the individual will be given a named contact at the school and their contact details
- **If it is decided that no further action is to be taken** in regard to the subject of the allegation or concern, record this decision and the justification for it and agree with the designated officer what information should be put in writing to the individual and by whom, as well as what action should follow both in respect of the individual and those who made the initial allegation
- **If it is decided that further action is needed**, take steps as agreed with the designated officer to initiate the appropriate action in school and/or liaise with the police and/or children's social care services as appropriate
- Provide effective support for the individual facing the allegation or concern, including appointing a named representative to keep them informed of the progress of the case and considering what other support is appropriate. Support and advice is available to individuals via trade union representatives, Workplace Options or via the Ealing School Counselling Partnership staff drop-in service.

- Inform the parents or carers of the child/children involved about the allegation as soon as possible if they do not already know (following agreement with children's social care services and/or the police, if applicable). The case manager will also inform the parents or carers of the requirement to maintain confidentiality about any allegations made against teachers (where this applies) while investigations are ongoing. Any parent or carer who wishes to have the confidentiality restrictions removed in respect of a teacher will be advised to seek legal advice
- Keep the parents or carers of the child/children involved informed of the progress of the case (only in relation to their child – no information will be shared regarding the staff member)
- Make a referral to the DBS where it is thought that the individual facing the allegation or concern has engaged in conduct that harmed or is likely to harm a child, or if the individual otherwise poses a risk of harm to a child

If the school is made aware that the secretary of state has made an interim prohibition order in respect of an individual, we will immediately suspend that individual from teaching, pending the findings of the investigation by the Teaching Regulation Agency.

Where the police are involved, wherever possible the school will ask the police at the start of the investigation to obtain consent from the individuals involved to share their statements and evidence for use in the school's disciplinary process, should this be required at a later point.

#### **Additional considerations for supply teachers and all contracted staff**

If there are concerns or an allegation is made against someone not directly employed by the school, such as a supply teacher or contracted staff member provided by an agency, we will take the actions below in addition to our standard procedures.

- We will not decide to stop using an individual due to safeguarding concerns without finding out the facts and liaising with our LADO to determine a suitable outcome
- The governing board will discuss with the agency whether it is appropriate to suspend the individual, or redeploy them to another part of the school, while the school carries out the investigation
- We will involve the agency fully, but the school will take the lead in collecting the necessary information and providing it to the LADO as required
- We will address issues such as information sharing, to ensure any previous concerns or allegations known to the agency are taken into account (we will do this, for example, as part of the allegations management meeting or by liaising directly with the agency where necessary)

When using an agency, we will inform them of our process for managing allegations, and keep them updated about our policies as necessary, and will invite the agency's HR manager or equivalent to meetings as appropriate.

#### **Timescales**

We will deal with all allegations as quickly and effectively as possible and will endeavour to comply with the following timescales, where reasonably practicable:

- Any cases where it is clear immediately that the allegation is unsubstantiated or malicious should be resolved within 1 week
- If the nature of an allegation does not require formal disciplinary action, appropriate action should be taken within 3 working days
- If a disciplinary hearing is required and can be held without further investigation, this should be held within 15 working days

However, these are objectives only and where they are not met, we will endeavour to take the required action as soon as possible thereafter.



## **Specific actions**

### **Action following a criminal investigation or prosecution**

The case manager will discuss with the local authority's designated officer whether any further action, including disciplinary action, is appropriate and, if so, how to proceed, taking into account information provided by the police and/or children's social care services.

### **Conclusion of a case where the allegation is substantiated**

If the allegation is substantiated and the individual is dismissed or the school ceases to use their services, or the individual resigns or otherwise ceases to provide their services, the school will make a referral to the DBS for consideration of whether inclusion on the barred lists is required.

If the individual concerned is a member of teaching staff, the school will consider whether to refer the matter to the Teaching Regulation Agency to consider prohibiting the individual from teaching.

### **Individuals returning to work after suspension**

If it is decided on the conclusion of a case that an individual who has been suspended can return to work, the case manager will consider how best to facilitate this.

The case manager will also consider how best to manage the individual's contact with the child or children who made the allegation, if they are still attending the school.

### **Unsubstantiated, unfounded, false or malicious reports**

If a report is:

- Determined to be unsubstantiated, unfounded, false or malicious, the DSL will consider the appropriate next steps. If they consider that the child and/or person who made the allegation is in need of help, or the allegation may have been a cry for help, a referral to children's social care may be appropriate
- Shown to be deliberately invented, or malicious, the school will consider whether any disciplinary action is appropriate against the individual(s) who made it

### **Unsubstantiated, unfounded, false or malicious allegations**

If an allegation is:

- Determined to be unsubstantiated, unfounded, false or malicious, the LADO and case manager will consider the appropriate next steps. If they consider that the child and/or person who made the allegation is in need of help, or the allegation may have been a cry for help, a referral to children's social care may be appropriate
- Shown to be deliberately invented, or malicious, the school will consider whether any disciplinary action is appropriate against the individual(s) who made it

## **Confidentiality and information sharing**

The school will make every effort to maintain confidentiality and guard against unwanted publicity while an allegation is being investigated or considered.

The case manager will take advice from the LADO, police and children's social care services, as appropriate, to agree:

- Who needs to know about the allegation and what information can be shared
- How to manage speculation, leaks and gossip, including how to make parents or carers of a child/children involved aware of their obligations with respect to confidentiality
- What, if any, information can be reasonably given to the wider community to reduce speculation
- How to manage press interest if, and when, it arises

## **Record-keeping**

The case manager will maintain clear records about any case where the allegation or concern meets the criteria above and store them on the individual's confidential personnel file for the duration of the case.

The records of any allegation that, following an investigation, is found to be malicious or false will be deleted from the individual's personnel file (unless the individual consents for the records to be retained on the file).

For all other allegations (which are not found to be malicious or false), the following information will be kept on the file of the individual concerned:

- A clear and comprehensive summary of the allegation
- Details of how the allegation was followed up and resolved
- Notes of any action taken, decisions reached and the outcome
- A declaration on whether the information will be referred to in any future reference

In these cases, the school will provide a copy to the individual, in agreement with children's social care or the police as appropriate.

Where records contain information about allegations of sexual abuse, we will preserve these for the Independent Inquiry into Child Sexual Abuse (IICSA), for the term of the inquiry. We will retain all other records at least until the individual has reached normal pension age, or for 10 years from the date of the allegation if that is longer.

## References

When providing employer references, we will:

- Not refer to any allegation that has been found to be false, unfounded, unsubstantiated or malicious, or any repeated allegations which have all been found to be false, unfounded, unsubstantiated or malicious
- Include substantiated allegations, provided that the information is factual and does not include opinions

## Learning lessons

After any cases where the allegations are *substantiated*, the case manager will review the circumstances of the case with the local authority's designated officer to determine whether there are any improvements that we can make to the school's procedures or practice to help prevent similar events in the future.

This will include consideration of (as applicable):

- Issues arising from the decision to suspend the member of staff
- The duration of the suspension
- Whether or not the suspension was justified
- The use of suspension when the individual is subsequently reinstated. We will consider how future investigations of a similar nature could be carried out without suspending the individual

For all other cases, the case manager will consider the facts and determine whether any improvements can be made.

## Non-recent allegations

Abuse can be reported, no matter how long ago it happened.

We will report any non-recent allegations made by a child to the LADO in line with our local authority's procedures for dealing with non-recent allegations.

Where an adult makes an allegation to the school that they were abused as a child, we will advise the individual to report the allegation to the police.

## **Section 2: concerns that do not meet the harm threshold**

The section is based on 'Section 2: Concerns that do not meet the harm threshold' in part 4 of Keeping Children Safe in Education.

This section applies to all concerns (including allegations) about members of staff, including supply teachers, volunteers and contractors, which do not meet the harm threshold set out in section 1 above.

Concerns may arise through, for example:

- Suspicion
- Complaint
- Disclosure made by a child, parent or other adult within or outside the school
- Pre-employment vetting checks

We recognise the importance of responding to and dealing with any concerns in a timely manner to safeguard the welfare of children.

### **Definition of low-level concerns**

The term 'low-level' concern is any concern – no matter how small – that an adult working in or on behalf of the school may have acted in a way that:

- Is inconsistent with the staff code of conduct, including inappropriate conduct outside of work, **and**
- Does not meet the allegations threshold or is otherwise not considered serious enough to consider a referral to the designated officer at the local authority

Examples of such behaviour could include, but are not limited to:

- Being overly friendly with children
- Having favourites
- Taking photographs of children on their mobile phone
- Engaging with a child on a one-to-one basis in a secluded area or behind a closed door
- Using inappropriate sexualised, intimidating or offensive language

### **Sharing low-level concerns**

We recognise the importance of creating a culture of openness, trust and transparency to encourage all staff to share low-level concerns so that they can be addressed appropriately.

We will create this culture by:

- Ensuring staff are clear about what appropriate behaviour is, and are confident in distinguishing expected and appropriate behaviour from concerning, problematic or inappropriate behaviour, in themselves and others
- Empowering staff to share any low-level concerns as per section 7.7 of this policy
- Empowering staff to self-refer
- Addressing unprofessional behaviour and supporting the individual to correct it at an early stage
- Providing a responsive, sensitive and proportionate handling of such concerns when they are raised
- Helping to identify any weakness in the school's safeguarding system

### **Responding to low-level concerns**

If the concern is raised via a third party, the headteacher will collect evidence where necessary by speaking:

- Directly to the person who raised the concern, unless it has been raised anonymously
- To the individual involved and any witnesses

The headteacher will use the information collected to categorise the type of behaviour and determine any further action, in line with the school's code of conduct.

Keeping Children Safe in Education also links to this report for more information [Developing and implementing a low-level concerns policy: A guide for organisations which work with children](#)

### **Record keeping**

All low-level concerns will be recorded in writing. In addition to details of the concern raised, records will include the context in which the concern arose, any action taken and the rationale for decisions and action taken.

Records will be:

- Kept confidential, held securely and comply with the DPA 2018 and UK GDPR
- Reviewed so that potential patterns of concerning, problematic or inappropriate behaviour can be identified. Where a pattern of such behaviour is identified, we will decide on a course of action, either through our disciplinary procedures or, where a pattern of behaviour moves from a concern to meeting the harms threshold as described in section 1 of this appendix, we will refer it to the designated officer at the local authority
- Retained at least until the individual leaves employment at the school

Where a low-level concern relates to a supply teacher or contractor, we will notify the individual's employer, so any potential patterns of inappropriate behaviour can be identified.

### **References**

We will not include low-level concerns in references unless:

- The concern (or group of concerns) has met the threshold for referral to the designated officer at the local authority and is found to be substantiated; and/or
- The concern (or group of concerns) relates to issues which would ordinarily be included in a reference, such as misconduct or poor performance

#### **Appendix 4: specific safeguarding issues**

This appendix is mostly based on the advice in Keeping Children Safe in Education, in particular annex B.

Annex B also includes information on further issues to be aware of, including child abduction and community safety incidents, children's involvement in the court system, children with family members in prison, county lines, modern slavery and cybercrime.

#### **Children missing from education**

A child going missing from education, particularly repeatedly, can be a warning sign of a range of safeguarding issues. This might include abuse or neglect, such as sexual abuse or exploitation or child criminal exploitation, or issues such as mental health problems, substance abuse, radicalisation, FGM or forced marriage.

There are many circumstances where a child may become missing from education, but some children are particularly at risk. These include children who:

- Are at risk of harm or neglect
- Are at risk of forced marriage or FGM
- Come from Gypsy, Roma, or Traveller families
- Come from the families of service personnel
- Go missing or run away from home or care
- Are supervised by the youth justice system
- Cease to attend a school
- Come from new migrant families

We will follow our procedures for unauthorised absence and for dealing with children who go missing from education, particularly on repeat occasions, to help identify the risk of abuse and neglect, including sexual exploitation, and to help prevent the risks of going missing in future. This includes informing the local authority if a child leaves the school without a new school being named, and adhering to requirements with respect to sharing information with the local authority, when applicable, when removing a child's name from the admission register at non-standard transition points.

Staff will be trained in signs to look out for and the individual triggers to be aware of when considering the risks of potential safeguarding concerns which may be related to being missing, such as travelling to conflict zones, FGM and forced marriage.

If a staff member suspects that a child is suffering from harm or neglect, we will follow local child protection procedures, including with respect to making reasonable enquiries. We will make an immediate referral to the local authority children's social care team, and the police, if the child is suffering or likely to suffer from harm, or in immediate danger.

#### **Child criminal exploitation**

Child criminal exploitation (CCE) is a form of abuse where an individual or group takes advantage of an imbalance of power to coerce, control, manipulate or deceive a child into criminal activity, in exchange for something the victim needs or wants, and/or for the financial or other advantage of the perpetrator or facilitator, and/or through violence or the threat of violence.

The abuse can be perpetrated by males or females, and children or adults. It can be a one-off occurrence or a series of incidents over time, and range from opportunistic to complex organised abuse.

The victim can be exploited even when the activity appears to be consensual. It does not always involve physical contact and can happen online. For example, young people may be forced to work in cannabis

factories, coerced into moving drugs or money across the country (county lines), forced to shoplift or pickpocket, or to threaten other young people.

Indicators of CCE can include a child:

- Appearing with unexplained gifts or new possessions
- Associating with other young people involved in exploitation
- Suffering from changes in emotional wellbeing
- Misusing drugs and alcohol
- Going missing for periods of time or regularly coming home late
- Regularly missing school or education
- Not taking part in education

If a member of staff suspects CCE, they will discuss this with the DSL. The DSL will trigger the local safeguarding procedures, including a referral to the local authority's children's social care team and the police, if appropriate.

### **Child sexual exploitation**

Child sexual exploitation (CSE) is a form of child sexual abuse where an individual or group takes advantage of an imbalance of power to coerce, manipulate or deceive a child into sexual activity, in exchange for something the victim needs or wants and/or for the financial advantage or increased status of the perpetrator or facilitator. It may, or may not, be accompanied by violence or threats of violence.

The abuse can be perpetrated by males or females, and children or adults. It can be a one-off occurrence or a series of incidents over time, and range from opportunistic to complex organised abuse.

The victim can be exploited even when the activity appears to be consensual. Children or young people who are being sexually exploited may not understand that they are being abused. They often trust their abuser and may be tricked into believing they are in a loving, consensual relationship.

CSE can include both physical contact (penetrative and non-penetrative acts) and non-contact sexual activity. It can also happen online. For example, young people may be persuaded or forced to share sexually explicit images of themselves, have sexual conversations by text, or take part in sexual activities using a webcam. CSE may also occur without the victim's immediate knowledge, for example through others copying videos or images.

In addition to the CCE indicators above, indicators of CSE can include a child:

- Having an older boyfriend or girlfriend
- Suffering from sexually transmitted infections or becoming pregnant

If a member of staff suspects CSE, they will discuss this with the DSL. The DSL will trigger the local safeguarding procedures, including a referral to the local authority's children's social care team and the police, if appropriate.

### **Domestic abuse**

Children can witness and be adversely affected by domestic abuse and/or violence at home where it occurs between family members. In some cases, a child may blame themselves for the abuse or may have had to leave the family home as a result.

Types of domestic abuse include intimate partner violence, abuse by family members, teenage relationship abuse and child/adolescent to parent violence and abuse. Anyone can be a victim of

domestic abuse, regardless of gender, age, ethnicity, socioeconomic status, sexuality or background, and domestic abuse can take place inside or outside of the home.

Exposure to domestic abuse and/or violence can have a serious, long-lasting emotional and psychological impact on children.

If police are called to an incident of domestic abuse and any children in the household have experienced the incident, the police will inform the key adult in school (usually the designated safeguarding lead) before the child or children arrive at school the following day ([Operation Encompass](#)). The DSL will provide support according to the child's needs and update records about their circumstances.

### **Homelessness**

Being homeless or being at risk of becoming homeless presents a real risk to a child's welfare.

The DSL will be aware of contact details and referral routes in to the local housing authority so they can raise/progress concerns at the earliest opportunity (where appropriate and in accordance with local procedures).

Where a child has been harmed or is at risk of harm, the DSL will also make a referral to children's social care.

### **So-called 'honour-based' abuse (including FGM and forced marriage)**

So-called 'honour-based' abuse (HBA) encompasses incidents or crimes committed to protect or defend the honour of the family and/or community, including FGM, forced marriage, and practices such as breast ironing.

Abuse committed in this context often involves a wider network of family or community pressure and can include multiple perpetrators.

All forms of HBA are abuse and will be handled and escalated as such. All staff will be alert to the possibility of a child being at risk of HBA or already having suffered it. If staff have a concern, they will speak to the DSL, who will activate local safeguarding procedures.

### **FGM**

The DSL will make sure that staff have access to appropriate training to equip them to be alert to children affected by FGM or at risk of FGM.

Section 7 of this policy sets out the procedures to be followed if a staff member discovers that an act of FGM appears to have been carried out or suspects that a pupil is at risk of FGM.

Indicators that FGM has already occurred include:

- A pupil confiding in a professional that FGM has taken place
- A mother/family member disclosing that FGM has been carried out
- A family/pupil already being known to social services in relation to other safeguarding issues
- A girl:
  - Having difficulty walking, sitting or standing, or looking uncomfortable
  - Finding it hard to sit still for long periods of time (where this was not a problem previously)
  - Spending longer than normal in the bathroom or toilet due to difficulties urinating
  - Having frequent urinary, menstrual or stomach problems
  - Avoiding physical exercise or missing PE

- Being repeatedly absent from school, or absent for a prolonged period
- Demonstrating increased emotional and psychological needs – for example, withdrawal or depression, or significant change in behaviour
- Being reluctant to undergo any medical examinations
- Asking for help, but not being explicit about the problem
- Talking about pain or discomfort between her legs

Potential signs that a pupil may be at risk of FGM include:

- The girl's family having a history of practising FGM (this is the biggest risk factor to consider)
- FGM being known to be practised in the girl's community or country of origin
- A parent or family member expressing concern that FGM may be carried out
- A family not engaging with professionals (health, education or other) or already being known to social care in relation to other safeguarding issues
- A girl:
  - Having a mother, older sibling or cousin who has undergone FGM
  - Having limited level of integration within UK society
  - Confiding to a professional that she is to have a "special procedure" or to attend a special occasion to "become a woman"
  - Talking about a long holiday to her country of origin or another country where the practice is prevalent, or parents/carers stating that they or a relative will take the girl out of the country for a prolonged period
  - Requesting help from a teacher or another adult because she is aware or suspects that she is at immediate risk of FGM
  - Talking about FGM in conversation – for example, a girl may tell other children about it (although it is important to take into account the context of the discussion)
  - Being unexpectedly absent from school
  - Having sections missing from her 'red book' (child health record) and/or attending a travel clinic or equivalent for vaccinations/anti-malarial medication

The above indicators and risk factors are not intended to be exhaustive.

### **Forced marriage**

Forcing a person into marriage is a crime. A forced marriage is one entered into without the full and free consent of one or both parties and where violence, threats, or any other form of coercion is used to cause a person to enter into a marriage. Threats can be physical or emotional and psychological.

Staff will receive training around forced marriage and the presenting symptoms. We are aware of the 'one chance' rule, i.e. we may only have one chance to speak to the potential victim and only one chance to save them.

If a member of staff suspects that a pupil is being forced into marriage, they will speak to the pupil about their concerns in a secure and private place. They will then report this to the DSL.

The DSL will:

- Speak to the pupil about the concerns in a secure and private place



- Activate the local safeguarding procedures and refer the case to the local authority's designated officer
- Seek advice from the Forced Marriage Unit on 020 7008 0151 or [fm@fco.gov.uk](mailto:fm@fco.gov.uk)
- Refer the pupil to an education welfare officer, pastoral tutor, learning mentor, or school counsellor, as appropriate

### Preventing radicalisation

- **Radicalisation** refers to the process by which a person comes to support terrorism and extremist ideologies associated with terrorist groups
- **Extremism** is vocal or active opposition to fundamental British values, such as democracy, the rule of law, individual liberty, and mutual respect and tolerance of different faiths and beliefs. This also includes calling for the death of members of the armed forces
- **Terrorism** is an action that:
  - Endangers or causes serious violence to a person/people;
  - Causes serious damage to property; or
  - Seriously interferes or disrupts an electronic system

The use or threat of terrorism must be designed to influence the government or to intimidate the public and is made for the purpose of advancing a political, religious or ideological cause.

Schools have a duty to prevent children from being drawn into terrorism. The DSL will undertake Prevent awareness training and make sure that staff have access to appropriate training to equip them to identify children at risk.

We will assess the risk of children in our school being drawn into terrorism. This assessment will be based on an understanding of the potential risk in our local area, in collaboration with our local safeguarding partners and local police force.

We will ensure that suitable internet filtering is in place, and equip our pupils to stay safe online at school and at home.

There is no single way of identifying an individual who is likely to be susceptible to an extremist ideology. Radicalisation can occur quickly or over a long period.

Staff will be alert to changes in pupils' behaviour.

The government website [Educate Against Hate](#) and charity [NSPCC](#) say that signs that a pupil is being radicalised can include:

- Refusal to engage with, or becoming abusive to, peers who are different from themselves
- Becoming susceptible to conspiracy theories and feelings of persecution
- Changes in friendship groups and appearance
- Rejecting activities they used to enjoy
- Converting to a new religion
- Isolating themselves from family and friends
- Talking as if from a scripted speech
- An unwillingness or inability to discuss their views
- A sudden disrespectful attitude towards others
- Increased levels of anger
- Increased secretiveness, especially around internet use

- Expressions of sympathy for extremist ideologies and groups, or justification of their actions
- Accessing extremist material online, including on Facebook or Twitter
- Possessing extremist literature
- Being in contact with extremist recruiters and joining, or seeking to join, extremist organisations

Children who are at risk of radicalisation may have low self-esteem, or be victims of bullying or discrimination. It is important to note that these signs can also be part of normal teenage behaviour – staff should have confidence in their instincts and seek advice if something feels wrong.

If staff are concerned about a pupil, they will follow our procedures set out in section 7.5 of this policy, including discussing their concerns with the DSL.

Staff should **always** take action if they are worried.

### **Peer-on-peer abuse**

Peer-on-peer abuse is when children abuse other children. This type of abuse can take place inside and outside of school and online.

Peer-on-peer abuse is most likely to include, but may not be limited to:

- Bullying (including cyber-bullying, prejudice-based and discriminatory bullying)
- Abuse in intimate personal relationships between peers
- Physical abuse such as hitting, kicking, shaking, biting, hair pulling, or otherwise causing physical harm (this may include an online element which facilitates, threatens and/or encourages physical abuse)
- Sexual violence, such as rape, assault by penetration and sexual assault (this may include an online element which facilitates, threatens and/or encourages sexual violence)
- Sexual harassment, such as sexual comments, remarks, jokes and online sexual harassment, which may be standalone or part of a broader pattern of abuse
- Causing someone to engage in sexual activity without consent, such as forcing someone to strip, touch themselves sexually, or to engage in sexual activity with a third party
- Consensual and non-consensual sharing of nudes and semi nudes images and/or videos (also known as sexting or youth produced sexual imagery)
- Upskirting, which typically involves taking a picture under a person's clothing without their permission, with the intention of viewing their genitals or buttocks to obtain sexual gratification, or cause the victim humiliation, distress or alarm
- Initiation/hazing type violence and rituals (this could include activities involving harassment, abuse or humiliation used as a way of initiating a person into a group and may also include an online element)

Where children abuse their peers online, this can take the form of, for example, abusive, harassing, and misogynistic messages; the non-consensual sharing of indecent images, especially around chat groups; and the sharing of abusive images and pornography, to those who don't want to receive such content.

If staff have any concerns about peer-on-peer abuse, or a child makes a report to them, they will follow the procedures set out in section 7 of this policy, as appropriate. In particular, section 7.8 and 7.9 set out more detail about our school's approach to this type of abuse.

### **Sexual violence and sexual harassment between children in schools**

Sexual violence and sexual harassment can occur:

- Between 2 children of any age and sex
- Through a group of children sexually assaulting or sexually harassing a single child or group of children
- Online and face to face (both physically and verbally)

Sexual violence and sexual harassment exist on a continuum and may overlap.

Children who are victims of sexual violence and sexual harassment will likely find the experience stressful and distressing. This will, in all likelihood, adversely affect their educational attainment and will be exacerbated if the alleged perpetrator(s) attends the same school.

If a victim reports an incident, it is essential that staff make sure they are reassured that they are being taken seriously and that they will be supported and kept safe. A victim should never be given the impression that they are creating a problem by reporting sexual violence or sexual harassment. Nor should a victim ever be made to feel ashamed for making a report.

Some groups are potentially more at risk. Evidence shows that girls, children with SEN and/or disabilities, and lesbian, gay, bisexual and transgender (LGBT) children are at greater risk.

Staff should be aware of the importance of:

- Challenging inappropriate behaviours
- Making clear that sexual violence and sexual harassment is not acceptable, will never be tolerated and is not an inevitable part of growing up
- Challenging physical behaviours (potentially criminal in nature), such as grabbing bottoms, breasts and genitalia, pulling down trousers, flicking bras and lifting up skirts. Dismissing or tolerating such behaviours risks normalising them

If staff have any concerns about sexual violence or sexual harassment, or a child makes a report to them, they will follow the procedures set out in section 7 of this policy, as appropriate. In particular, section 7 set out more detail about our school's approach to this type of abuse.

### **Serious violence**

Indicators which may signal that a child is at risk from, or involved with, serious violent crime may include:

- Increased absence from school
- Change in friendships or relationships with older individuals or groups
- Significant decline in performance
- Signs of self-harm or a significant change in wellbeing
- Signs of assault or unexplained injuries
- Unexplained gifts or new possessions (this could indicate that the child has been approached by, or is involved with, individuals associated with criminal networks or gangs and may be at risk of criminal exploitation (see above))

Risk factors which increase the likelihood of involvement in serious violence include:

- Being male
- Having been frequently absent or permanently excluded from school
- Having experienced child maltreatment
- Having been involved in offending, such as theft or robbery

Staff will be aware of these indicators and risk factors. If a member of staff has a concern about a pupil being involved in, or at risk of, serious violence, they will report this to the DSL.

### **Checking the identity and suitability of visitors**

All visitors will be required to verify their identity to the satisfaction of staff.

If the visitor is unknown to the setting, we will check their credentials and reason for visiting before allowing them to enter the setting. Visitors should be ready to produce identification and a DBS where relevant.

Visitors are expected to sign the visitors' book and wear a visitor's badge.

Visitors to the school who are visiting for a professional purpose, such as educational psychologists and school improvement officers, will be asked to show photo ID and:

- Will be asked to show their DBS certificate, which will be checked alongside their photo ID; or
- The organisation sending the professional, such as the LA or educational psychology service, will provide prior written confirmation that an appropriate level of DBS check has been carried out

All other visitors, including visiting speakers, will be accompanied by a member of staff at all times. We will not invite into the school any speaker who is known to disseminate extremist views, and will carry out appropriate checks to ensure that any individual or organisation using school facilities is not seeking to disseminate extremist views or radicalise pupils or staff.

### **Non-collection of children**

If a child is not collected at the end of the session/day, we will attempt to contact parents/ carers or other emergency contacts listed on SIMs. If we are unable to make contact, a member of SLT will contact Social Care. The child will be looked after by school staff until a resolution is found. All incidents of non-collection should be input onto Edaware.

### **Missing pupils**

Our procedures are designed to ensure that a missing child is found and returned to effective supervision as soon as possible. If a child goes missing, we will follow the LA CME procedures.