

HEADTEACHER BULLETIN

Friday 26.1.24

Follow us @ <https://www.facebook.com/KidsgroveSecondary>

Dear Parents/Carers,

We are halfway through the shortest half term of the year already but as always its been busy at KSS since our return from the Christmas break.

The Year 11 students have less than 60 school days before their final summer examinations begin and it was brilliant to see such a great turnout at the Year 11 parents evening last Thursday. The support from parents and carers is remarkable as we work together to get the best possible outcomes for each student.

We look forward to welcoming the year 10 parents/carers into school on the 8th of February for a face to face parents evening to review the recent performance assessments. The year 10's have really impressed us recently with their focus and work ethic. We hope that this continues further into 2024.

All students will be receiving a progress report home after half term to update parents/carers with regards to student progress so far this year. We look forward to the feedback regarding our new reports which reflect our new assessment strategy. These will be particularly important for Year 9 students who will be choosing their GCSE option subjects in the summer term. The options event will be organised as a joint parents evening and options subject showcase. Mrs Castrey will be in touch with further details after the Easter break about this.

We started the year by saying goodbye to Ms Morgan who joined us as an apprentice teaching assistant in the spring of 2023. She has been successful in securing a post at local primary school.

We would like to thank Ms Morgan for her hard work whilst in post at KSS and wish her ever success for the future.

I am delighted to announce that our receptionist Ms Potts has joined us permanently from January after completing her apprenticeship. We are delighted that she has made this transition as a permanent member of staff as she is a tremendous asset to the support team.

Additionally, Ms Wood has joined us as our new Science technician and we are also joined by Mrs Hibbert who has joined us as an administrative assistant. They will both add lots of energy and expertise to the non teaching support team.



Yours faithfully,
Mr S Frost

Upcoming Events:

Wednesday 7.2.24 - Headteacher Reward Lunch
Wednesday 7.2.24 - 'January Jumpstart' Gaming Event
Thursday 8.2.24 - Year 10 Parents Evening (Face to Face)
Friday 9.2.24 - Half Term Begins

Attendance



ATTENTION

Absence from school
must be reported
daily by calling
01782 948267
before 8:30am

**A HOME VISIT MAY BE CARRIED OUT
IF YOUR CHILD IS ABSENT FROM
SCHOOL WITHOUT REASON OR A
VALID REASON**

Kidsgrove Secondary School

Attendance Matters

#StopTheDrop



YEAR 11 PROGRESS PUSH

A message from Mrs Frost...

The Year 11's have blown us away with their engagement and attitude over the last few weeks and as a result we have a new reward initiative in place. Every time students go above and beyond by attending lunch time and after school interventions they can now add a token into their forms token box. The form with the most tokens will receive a prize and the counting to gauge who is leading can happen at anytime! I am sure it will be competitive between Mr Baldwin and Ms Morrell as each day passes.

Good luck Year 11!



WELCOME

A warm welcome to Mrs Hibbert who joins us as our new administrative assistant. We are delighted that Mrs Hibbert has joined our team.

Below are a few words from the lady herself.

'My name is Rachel and I am so excited to start my new journey here at Kidsgrove Secondary School! A little bit about me. I am a bit of a gamer, who equally enjoys crocheting, amigurumi and looking after my two children who keep me very busy! I have worked in education for most of my life and I am so excited to be back at a school with such positive energy!

I can't wait to see what my journey here holds! Look forward to meeting you! If you see me, please say Hi!'



DIGITAL STRATEGY

As part of our digital strategy, all students attending The Kidsgrove Secondary School are issued with their own iPad which they use in lessons and out of school. We are delighted that our stringent filtering and monitoring procedures have been recognised and that we have been awarded with the 'Friendly WiFi' certification mark.

This certification means that parents and students have confidence that their online experience is as safe as possible.

We pride ourselves on a culture of strong safeguarding and are really pleased to have our work in this area certified.



THIS HEREBY CERTIFIES THAT

The Kidsgrove Secondary School

WiFi services has been independently checked and certified by Friendly WiFi and meets the minimum content filtering standards set under the Friendly WiFi programme.

VALID FROM: 19 January 2024

VALID TO: 18 January 2025

BEVERLEY SMITH
EXECUTIVE DIRECTOR
RDI (UK) HOLDINGS LTD



Friendly WiFi - It's good to know.

WWW.FRIENDLYWIFI.COM



Year 11

Y11 ACADEMIC FOCUS INTERVENTION TIMETABLE



	Mon	Tues	Wed	Thurs	Fri
Lunch	Maths 7+ Master class	Maths 4+ Master class (F) iMedia	Maths 4+ Master class (H) iMedia	Art Science Maths 5+ Masterclass (H) iMedia	
After school		Maths Art Spanish	English Spanish	History Photography PE	Geography

Year 11 have the opportunity to attend intervention at lunchtime and after school.

The timetable above is also supported by a compulsory form time intervention schedule.

We are confident that if students attend these sessions it will have a huge impact on their progress.



PROUD TO
BE
KSS



Year 11

A message from Mrs Postlethwaite...

A huge thanks to all parents/ carers who attended our Year 11 parents evening last week and especially to those that have taken the time to provide feedback.

Feedback

“Well organised, refreshments appreciated and great to do in person as it felt like we got more info.”

“Everyone was very welcoming. The face to face meeting felt more personal and any question's or queries were answered straight away.”

“Well organised, refreshments appreciated and great to do in person as it felt like we got more info.”

“All the teachers were brilliant so encouraging they really do care about there students and are so engaging and helpful.”

We also really appreciate the feedback on how we can improve. Several responses mentioned people not sticking to appointment times and I know that this can be frustrating. We are looking at whether we can improve this moving forward as I know that this is an area for development.

If you were unable to attend parents evening you should have received a copy of your child's Y11 report, attendance certificate and provisional GCSE exam timetable in the post. If you haven't received this can you please let us know.



KS3



A message from Mr Till...

We started this half-term with our focus on attendance, with our tag line 'January Jump Start' being very apt as we enter a New Year. We are very proud that such a high quantity of our students have 100% attendance, showing the importance and impact this has on learning.

Mr Frost and the school council have been planning a reward event for those that can maintain these high expectations for the entire half-term. We look forward to our February/March attendance challenges being launched soon.



KS3 Football:

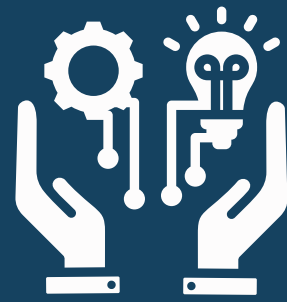
The KS3 Newcastle Schools Football League starts this half-term. Y8 fixtures are due to begin from 1st February and Y7 fixtures are arranged to commence at the end of the spring term. Information for those selected to represent the school will be released for Y8 shortly. A reminder that KS3 football club is on a Wednesday after-school (open to all KS3 students).



**PROUD TO
BE
KSS**



TECHNOLOGY



A message from Mrs Byan...

Photography

Yr 11 have started preparing for their Photography exam, making full use of the brand new facilities in the Innovation suite. They are using state of the art IT software to edit and manipulate images.

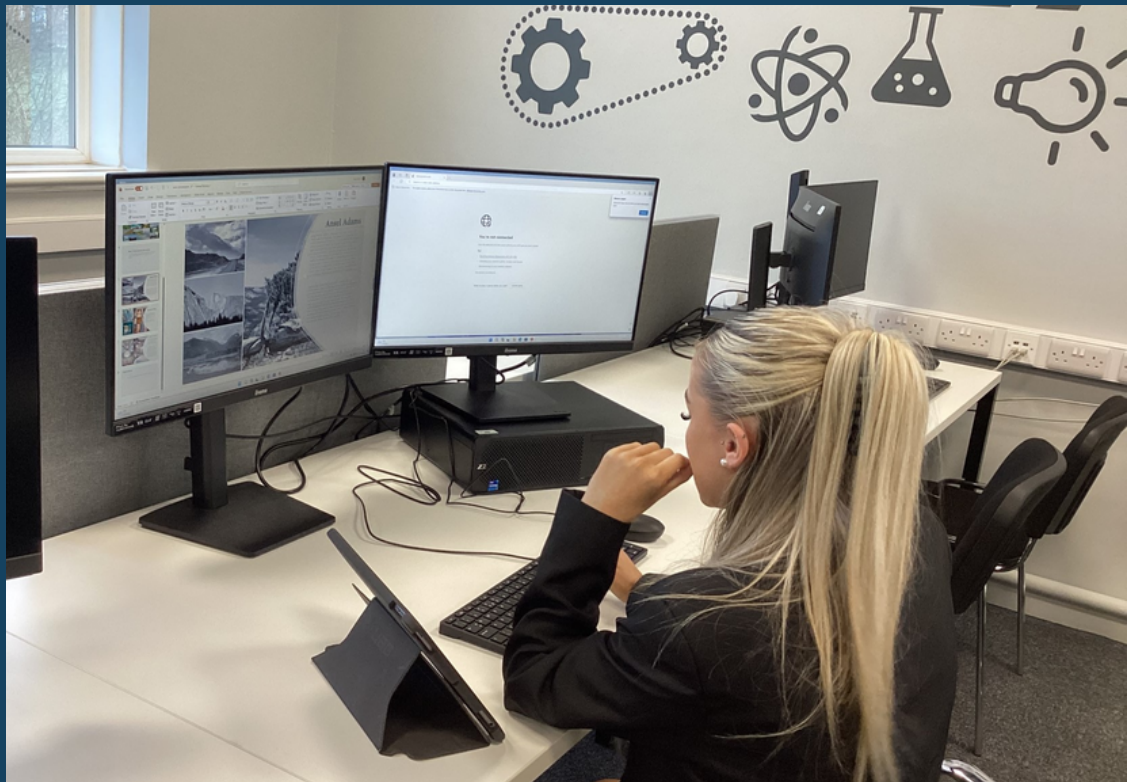
KS3 Food

We have been looking at the nutritional value of eggs, and then 'eggsperimenting' in cooking them 4 different ways to see if different cooking methods change the taste and texture of the eggs.

Well done to all of the students.



TECHNOLOGY



**"If you do enough small things right,
BIG THINGS can happen"**



**PROUD TO
BE
KSS**



TECHNOLOGY




"If you do enough small things right,
BIG THINGS can happen"



**PROUD TO
BE
KSS**



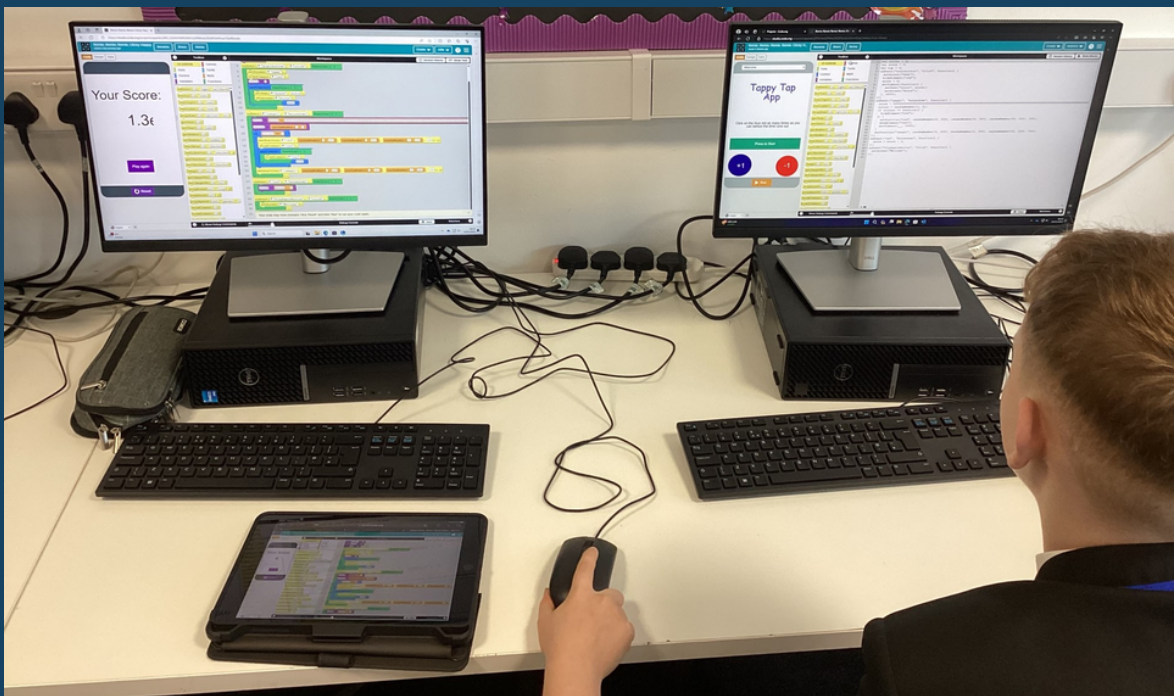
COMPUTING

A message from Ms Morrell...

Y8 have been using their programming skills to create an app in AppLab. They are creating a game that gets the user to tap a moving dot with their finger and get a score at the end. They will be able to share their own app with friends and family when they have finished to play on devices at home. They have done some super coding, great work Year8!



COMPUTING



MATHS

A message from Mrs McDermott...

Our students have made a great start to this half term following their Christmas break. We are very proud of their efforts to embed our LORIC core values.

Across all year groups students have been working on their ability to interpret key maths command words and present clear working out to support their answers. Here's a peek at some of their work:

$10 \cdot \overline{10} \cdot \overline{100} \cdot \overline{1000}$
 $1 \cdot \overline{1} \cdot \overline{10} \cdot \overline{100}$
 1st decimal place
 1.3 1.35 1.4
 1.4 3 d.p.

7) $0.9999 = 0.1000$
 8) $5.0024 = 5.002$

The distance between two points with different signs depends on the operation. Negative signs are the numbers before the decimal point and the numbers after the decimal point.

$500 + 200 = 700 = 28 \times 25$
 $20 \div 10 = 2$
 $482 = \frac{500}{12+3}$
 $1010 = 20 = 25$

1) $0.159 = 0.16$
 2) $0.478 = 0.48$
 3) $0.097 = 0.10$
 4) $0.088 = 0.09$
 5) $0.107 = 0.11$
 6) $0.089 = 0.09$
 7) $0.0049 = 0.005$
 8) $0.407 = 0.41$

1. $100 - 20 = \frac{100 - 20}{10} = 8$
 $100 - 20 = 80$
 2. $\frac{33 + 309}{33 - 15} = \frac{342}{18} = 19$
 $600 + 200 = \frac{800}{10} = 80$
 $30 - 20 = 10$

8.71 that's a digit
 10000
 100000
 1000000
 10000000
 100000000
 1000000000

1) A number rounded to the nearest 10 is 40. Write the error interval.
 $30 < 40 < 50$

2) Write 0.16 as a fraction.
 $0.16 = \frac{16}{100}$

$2 \times 2 = 8$
 $3 \times 9 = 27$
 $\sqrt{81} = 9$

Acute Angle
 Is less than 90°
 If an angle is smaller than a right angle is called a **Acute angle**.

Obtuse Angle
 It is between 90° and 180°

An angle is a space between two lines.
 A corner.
 A measure of turn.
 A full turn is 360° .
 Half turn is 180° .

2) Expand $3x(2x+4) = 6x^2 + 12x$

3) Increase 40 by 15%
 $15\% \text{ of } 40 = 6$
 $100\% = 40$
 $10\% = 4$
 $5\% = 2$
 $= 0.05$

Q1 A, B and C are points on the circumference of a circle with centre O. AOC is a straight line. Work out the size of the angle marked x.
 Q2 A, B, C and D are points on the circumference of a circle with centre O. AOC is a straight line. Work out the size of the angle marked x.
 Q3 A, B and C are points on the circumference of a circle with centre O. AOC is a straight line. Work out the size of the angle marked x.
 Q4 A, B and C are points on the circumference of a circle with centre O. AOC is a straight line. Work out the size of the angle marked x.
 Q5 A, B, C and D are points on the circumference of a circle with centre O. AOC is a straight line. Work out the size of the angle marked x.
 Q6 A, B, C and D are points on the circumference of a circle with centre O. AOC is a straight line. Work out the size of the angle marked x.

Friday 12th January 11
 What is the difference between rounding and truncating?
 a number x rounded to 1 decimal place is 3.6
 write down the error interval for x.
 $0.1 : 2 = 0.05$
 $3.6 \begin{matrix} +0.05 \\ -0.05 \end{matrix} \begin{matrix} 3.65 \\ 3.55 \end{matrix}$

8360 \leq x \leq 8450
 x rounded to 3 significant figures is 51300
 $51250 \leq x \leq 51350$

a 27
 b 7
 c 8.6
 d 32.18
 e 4

27.8 to whole number
 7.2 to 1 d.p.
 8.64 to 1 decimal place
 32.18 to 2 decimal places
 4.8 to 1 significant figure

If truncating you chop, you get rid of what it asks you to. Rounding you look at the number and go up or down.

Monday 15th January

MATHS

Challenge

THESE ARE THE MOST COMMONLY USE COMMAND WORDS IN MATHS, CAN YOUR CHILD SHOW YOU WHAT THEY MEAN?

Command Word	Maths interpretation
Calculate	A calculation and some working will be needed.
Change	Usually convert from one unit to another; either using known metric unit conversions or the use of a conversion graph.
Describe	Write a sentence that gives the features of the situation.
Explain	Write a sentence or a mathematical statement to show how you got to your answer or reached your conclusion.
Justify	Show all working and/or give a written explanation.
Prove	More formal than 'show', all steps must be present. In the case of a geometrical proof, reasons must be given. Algebra must be used for algebraic proof.
Show	All working needed to get to a given answer or complete a diagram to show given information.
Simplify	Simplify the given expression. Answer must be given in its simplest form.
Sketch	Produce a drawing that does not have to be drawn to scale or a graph that is drawn without working out each coordinate.
Solve	Find the solution of an equation or inequality.
Work out	Some working will be needed to get the answer.



MATHS



We are very pleased with the latest feedback received from students about their maths lessons, their engagement over the last 12 months has been such an incredibly positive journey:

70% of students say they enjoy maths

98% of students say they are given positive points in maths on Class Charts if they deserve them

88% of students say they are comfortable given verbal answers in front of the class, compared to only 55% this time last year

85% of students say they can see real-life applications of the maths that they do



MATHS



We are pleased to welcome Tom Rogers to the Department. Tom is working with us during the Spring term, he will provide additional support to our students. Below are a few words from him:

Hello, my name is Tom Rogers, and I am delighted to be teaching maths at Kidsgrove Secondary School. I come from a background in mathematics having completed my maths degree at Keele University, graduating last year with a first-class honors. Before teaching at KSS, I have spent some time teaching at Crompton House CoE in Oldham. I am hoping to bring my passion and enthusiasm to Kidsgrove and look forward to being a part of this great team. Outside of maths and teaching I also have a love for football and am a big Stoke supporter.

On the weekends you are likely to find my on the golf course practicing my swing!



MATHS



Year 11 Maths Revision

Let the GCSE exam prep continue!

Please join the maths department as you work to get the best GCSE grades possible.

Who: All Year 11
When: Every Tuesday after school
Where: Rooms 11 and 12

WEBSITE



REVISION WEBSITES:

[HTTPS://SPARXMATHS.COM/](https://sparxmaths.com/)

[HTTPS://WWW.BBC.CO.UK/BITESIZE/EXAMSPECS/Z9P3MNB](https://www.bbc.co.uk/bitesize/examspecs/z9p3mnb)

[HTTPS://CORBETTMATHS.COM/2023/08/01/GCSE-REVISION/](https://corbettmaths.com/2023/08/01/gcse-revision/)

[HTTPS://WWW.MATHSGENIE.CO.UK/GCSE.HTML](https://www.mathsgenie.co.uk/gcse.html)

[HTTPS://THIRDSPACELEARNING.COM/SECONDARY-RESOURCES/GCSE-MATHS/](https://thirdspacelearning.com/secondary-resources/gcse-maths/)



**PROUD TO
BE
KSS**



MATHS

Matching Socks Puzzle

You are about to leave for holiday, but you forgot socks!

You race back to your room, but the power is off so you can't see sock colors.

Never mind, because you remember that in your drawer there are ten pairs of green socks, ten pairs of black socks, and eleven pairs of blue socks, but they are all mixed up.

How many of your socks do you need to take before you can be sure to have at least one matching pair?



Attendance




KIDSGROVE SECONDARY



ATTENDANCE

01

Whole School
Year to date 94%



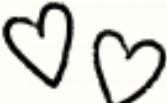
Best Forms

7TM 95.87%

8HM 95.82%


Best Year Group

Year 7




02

Secondary
National Average
91.3%



03

69%
of students have
100% attendance so
far this term



Best House



Attendance

KIDSGROVE
SECONDARY
SCHOOL

**IS YOUR CHILD FACING
BARRIERS TO
SCHOOL ATTENDANCE**

**KIDSGROVE SECONDARY
CAN HELP!**

**WE CAN
SUPPORT
YOU WITH**

- Breakfast On Arrival
- Uniform
- Equipment
- Transport
- School Meals

 Shaw
Education
Trust

Kidsgrove Secondary School

Attendance Matters

#StopTheDrop



WELCOME

A warm welcome to our new Science technician Miss Wood, who is supporting Dr Ma, Mrs Grice-Lowe and Mrs Postlethwaite with everything Science related.

Below are a few words from the lady herself.

'My name is Charlotte and I'm super excited to start my journey here at KSS. I studied science in college and knew in high school that I wanted to pursue a career in science. For fun I play paintball internationally and nationally. I'm super excited to prepare some amazing experiments for you all!'



HEADTEACHER DROP IN

A reminder that every Friday morning, we hold a Headteacher drop-in hour from 9am until 10am.

This is a great opportunity to come and see me regarding any queries or questions that you may have about the school.

Please just call in as there is no appointment required at this time.

KIDSGROVE SECONDARY SCHOOL



HEADTEACHER DROP IN



Every Friday
9:00am-10:00am

If you have any queries or questions, feel free to drop into the session and talk to Mr Frost.



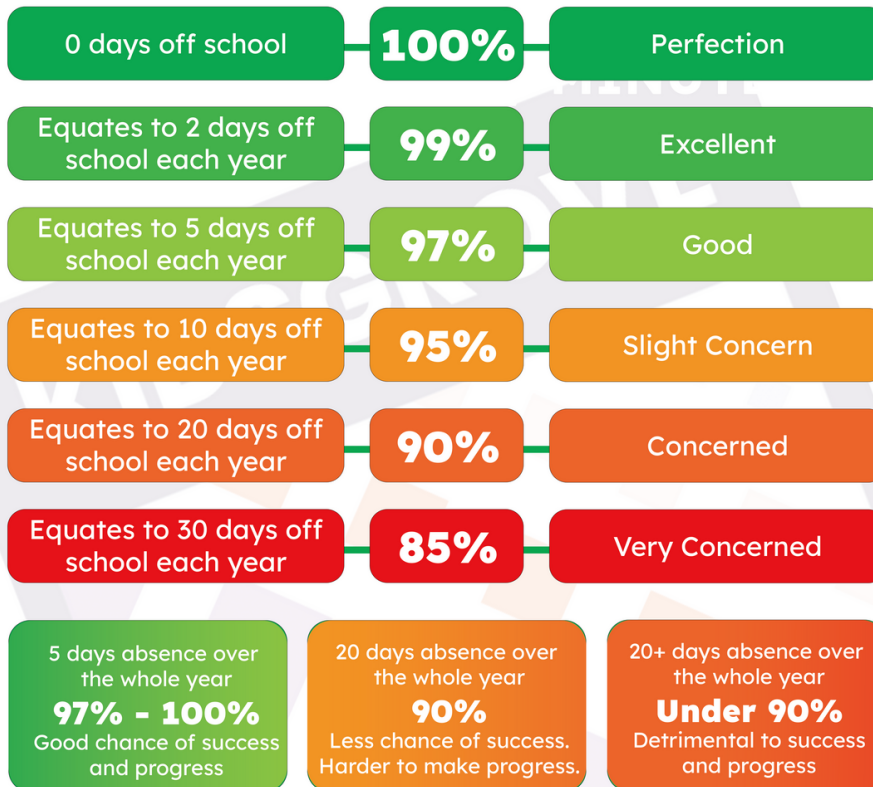
CORE VALUES



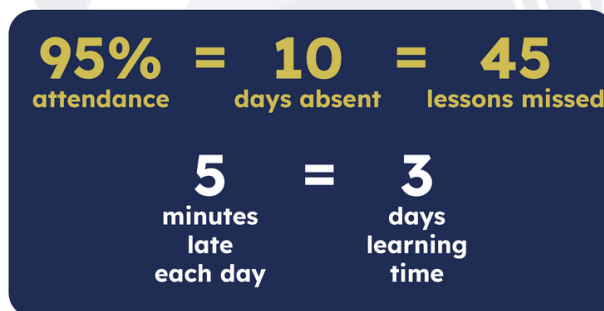
Attendance



Attendance Matters



Attend today, Achieve tomorrow!



"If you do enough small things right, **BIG THINGS** can happen"



ENGLISH

A message from Mr Baldwin...

Last week, the White-Water Writing camp took place at KSS, where eight of our students embraced the challenge of becoming published authors in just five days. From beginning to end, they conceived, crafted, and authored an extraordinary thriller, soon to be available for purchase. Each student exemplified our school values admirably, with resilience and communication standing out as primary virtues in this venture. The remarkable growth in confidence, evident from Monday morning to Friday afternoon, fills us with immense pride for their accomplishment. The eagerly anticipated book signing event will be happening soon and I know the students are looking forward to this celebration of their work.



The Sparx Reader program maintains its momentum, with Mr. Baldwin recently presenting a New Year's assembly centred around reading. He challenged every student to make their New Year's resolution focused on reading. Collectively, we have accomplished an impressive 2,666 hours of reading since September, equivalent to 111 days! Additionally, we've delved into the pages of 535 books. To add the icing on the cake, KSS stands atop the Shaw Education Trust leaderboard for the highest completion rate and engagement. A cause for immense pride.



DUKE OF EDINBURGH

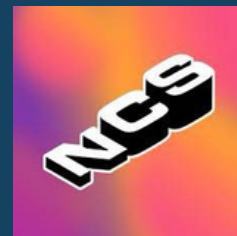
A message from Miss Hud...

Our year 10s are working their way through the 'volunteering', 'physical', and 'skill' sections of their Duke of Edinburgh awards. Their 'expedition' section will be completed later in the year.

A special mention to Alesha who has impressed the Operations Officer for Staffordshire with her commitment. She has already completed 3 months physical, skill and volunteering.



NCS – LIFE SKILLS



To support with their Personal Development, Year 11s are engaging in a unit of lessons delivered by NCS. These workshops cover a range of topics, developing LORIC values, fine tuning their transferable skills, knowledge and life skills.

So far they have covered; managing challenges and building resilience, budgeting and problem solving.

Coming up they will be engaging in sessions which will cover:

- **Debating**
- **Upcycling and creativity**
- **Online safety and the media**
- **Improving self confidence**
- **Bullying and misogynistic language**



Y11 CAREERS INTERVIEW

All of our Y11s have now had the benefit of careers interviews to support their Post-16 choices.

I would like to say a really big well done to everyone for engaging so positively and it is really exciting to see the focus, determination and drive now to ensure students have the best possible options available to them come the Summer.

If any of our Y11s feel that they need any additional support, please do not hesitate to pop to see me and I will go about sorting out additional interviews.

Well done again everyone....

Mrs Weaver



PERSONAL DEVELOPMENT

Year 8 and 9 student's have been visited by the LoudMouth company since Christmas to support the delivery of their Personal Development curriculum.

Year 8 student's took part in the 'Working with Marcus' session which sensitively and effectively addressed child exploitation, sexual exploitation, county lines and grooming in an age appropriate way.

Year 9 student's took part in the 'Calling it Out' Session which addressed harmful sexual behaviours, sexual harassment, sexual assault, pornography, consent and misogyny.

Student's watched a performance first and then took part in 20 minute workshops. These were well received by the students and they engaged brilliantly in the discussions.



CALLING IT OUT

DID YOU KNOW?
The Department for Education's guidance states that students should know...

- the concepts of, and laws relating to, sexual consent, sexual exploitation, abuse, grooming, coercion, harassment, rape and how these can affect current and future relationships.
- how people can actively communicate and recognise consent from others, including sexual consent, and how and when consent can be withdrawn (in all contexts, including online).
- how to identify harmful behaviours online (including bullying, abuse or harassment) and how to report, or find support, if they have been affected by those behaviours.
- schools should be aware of issues such as everyday sexism, misogyny, homophobia and gender stereotypes and take positive action to build a culture where these are not tolerated, and any occurrences are identified and tackled. Staff have an important role to play in modelling positive behaviours. School pastoral and behaviour policies should support all pupils.



WORKING FOR MARCUS

DID YOU KNOW?
The Department for Education's guidance states that...

- Relationships, Sexual Health and Health Education (RSHE) should ensure that grooming, sexual exploitation and domestic abuse, including coercive and controlling behaviour, should be addressed sensitively and clearly.
- Pupils should know how sexual consent, sexual exploitation, grooming and coercion can affect current and future relationships.
- Pupils should be made aware of the relevant legal position on sexual exploitation, violence and exploitation by gangs, extremism/radicalisation and criminal exploitation including 'county lines'.



Physical Education

A message from Mrs Castrey

PE lessons this half term have focused on Basketball and Trampolining.

Students have been developing complex skills in Trampolining, with students really challenging themselves and really pushing their limits.

I have been really impressed with every students' attitude and resilience in their Trampolining lessons; they are really enthusiastic, keen to learn new skills and refine their current ones.

I have seen a fantastic range of skills and students developing their leadership skills by coaching each other.

Keep up the great work!

Remember that Trampolining club is on Friday's and is open to everyone!



Physical Education

A message from Mrs Castrey...



PE CLUBS

Tuesday



Y7/ 8 Football

Wednesday



**Netball (all years)
Y10 & 11 Fitness Club**

Thursday



GCSE Revision Club

Friday



**Y10 & 11 Football
Trampolining (all years)**

Please see a member of the PE department for further details about these sessions.



**PROUD TO
BE
KSS**

EX-STUDENTS

A message from Miss Hud...

Two ex-students came into school for work experience this half term. They are currently studying at Stoke Sixth form and as part of their courses they are given the opportunity to observe in a work environment of their choice. Both girls are keen to work as teachers in the future, and we were delighted to have them back. Emily impressed the History teachers with her excellent attitude. In school we encourage leadership and initiative in our learners, and it was great to see that Emily exuded these qualities.

In Spanish Holly not only observed, but also prepared resources and taught a great section of a lesson. As you can see in the photo, her 'card sort' resources really engaged the year 8s and gave them an opportunity to retrieve their learning on 'past tense holidays' in an active way.



PROUD TO
BE
KSS

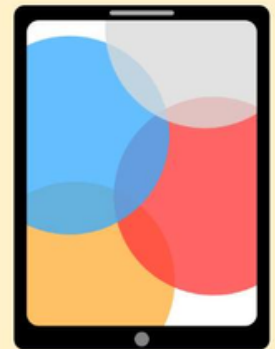


Year 11

YEAR 11 REVISION HUB



Now Open Daily from
3.05pm to 4.30pm



A place to revise in a quiet environment
each afternoon.

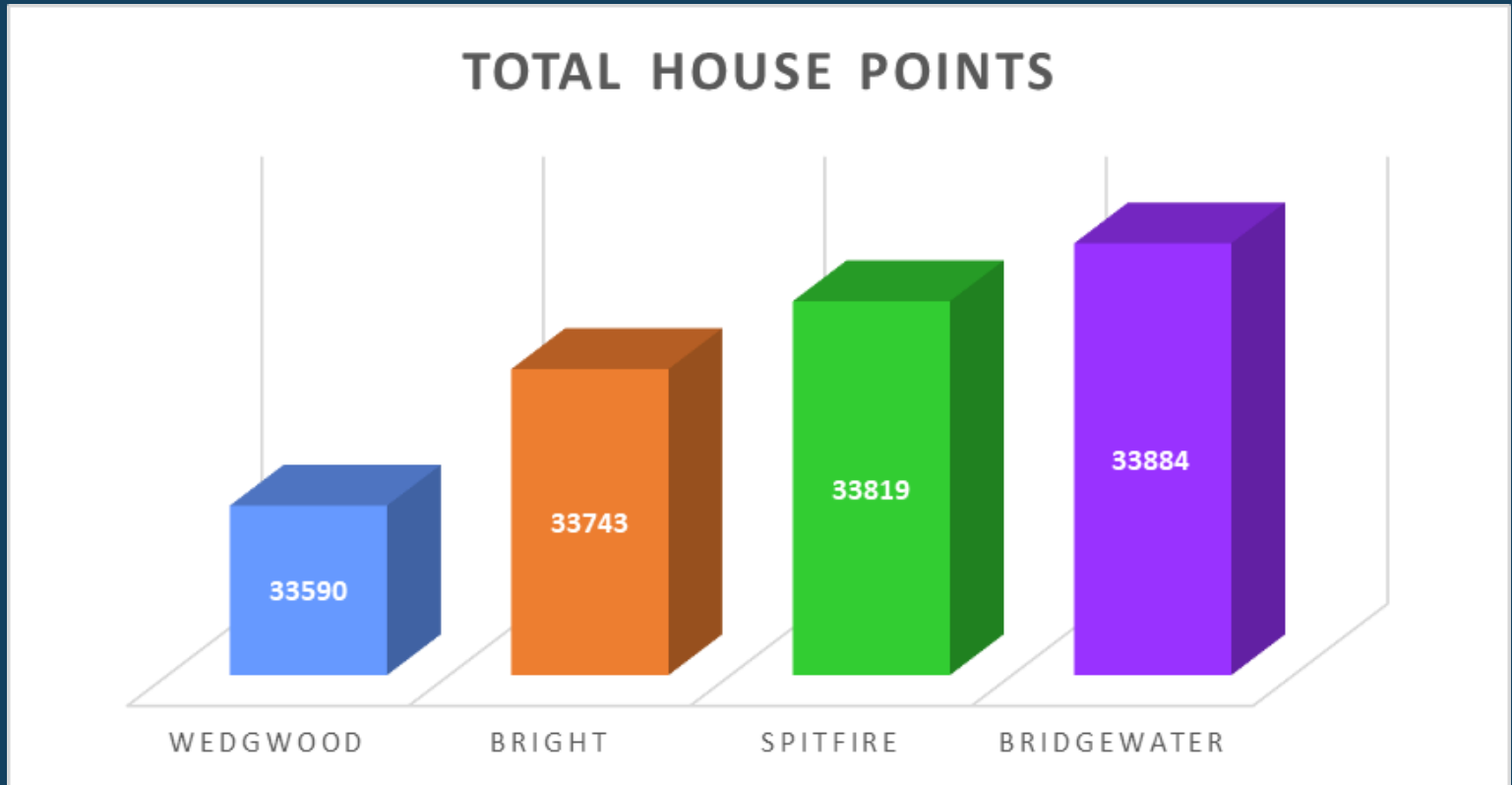


House Update

Below are the House totals for the year so far...

Well done to Bridgewater who are just in front by **65 points**.

It is still all to play for going into week 4 of this half term!



CORE VALUES





KIDSGROVE SECONDARY SCHOOL

JAN-FEB

EXTRA CURRICULAR ENRICHMENT OPPORTUNITIES

MONDAY

Lunchtime
13.30-14.00



German Club

Open to all

Room 6 – Miss Hud

Science Support

KS3

Room 23 – Dr Ma

TUESDAY

After School
15.05-18.05



Y10 Performing Arts

Year 10

Music – Mrs Evans

Open Studio

Open to all

Room 10 – Mrs Mason

WEDNESDAY

Lunchtime
13.30-14.00



Pride Club

Open to all

Room 14 – Miss Ayers

Netball

Open to all

Changing Rooms – Mrs Castrey

After School
15.05-18.05

Football

KS3

Changing Rooms – Mr Hilditch

Fitness

KS4

Fitness Suite – Mr Till

THURSDAY

Lunchtime
13.30-14.00



Science Support

KS4

Room 23 – Dr Ma

Open Studio

Open to all

Room 10 – Mrs Mason

After School
15.05-18.05

Football Fixtures

KS4

Changing Rooms – Mr Till

DofE Sessions

DofE

Room 9 – Mrs Weaver

FRIDAY

Lunchtime
13.30-14.00



Chess club

Open to all

Room 3 – Mr Baldwin

Football

KS4

Changing Rooms – Mr Frost

After School
15.05-18.05

Trampolining

Open to all

Hall – Mrs Castrey



Attendance



COFFEE MORNING

29.02.2024

Kidsgrove Secondary School



**SPRING TERM COFFEE MORNING
ALL WELCOME
9 AM**

Kidsgrove Secondary School

Attendance Matters

#StopTheDrop

