

Kirkburton Middle School



Parents Bulletin – 20th November 2023

Important Dates

Here is a look at the notable events coming up over the coming weeks:

- Tuesday 21st & Tuesday 28th November – Year 8 Parents' Evening
- Thursday 30th November – Year 6 SATs Information Evening for Parents – 6pm
- Friday 1st December – Inset Day
- Thursday 7th December – Year 7 & Year 8 Cinema visits
- Thursday 14th December – Grandparents Coffee Morning
- Tuesday 19th December – Christmas Dinner
- Thursday 21st December – Year 6 Lyceum Pantomime visit
- Friday 22nd December – Inset Day



Remembrance Service

'We will remember them.'

Many thanks to Heather D, Jessica J, Myles M and Roan P, who went down to the Cenotaph, Memorial Gardens which is at the side of Kirkburton Church, to join in the act of Remembrance on Friday 10th November. A wreath was laid on behalf of pupils and staff at our school. Miss Kaye played the Last Post and Reveille.

Prior to the Remembrance service in school, pupils learned about who, how and why we remember on 11th November. They learned about how the first world war started and how it ended. The service in school included two

heartfelt readings from year 8 pupils, Gray B in 8B and Scarlett R in 8E. All pupils participated respectfully in the 2-minute silence and were incredibly well behaved.

History News

We were delighted to receive so many entries in October for our very first House competition. This was a competition to highlight Black History Month and pupils were asked to submit poems on the theme of 'Saluting our Sisters'. This competition was introduced by members of History Club in assemblies where they spoke about black women, past and present, who have made a difference to society. Congratulations and very well done to our winners...

3rd Isabella M in 7D

2nd Anne H in 6F

1st Kitty E in 6F

History Club

History Club continues to run on Fridays every week. So far this year we have had sessions on Black History Month, the Atomic bomb, the Pendle Witch Trials and have just begun to research the history of our new houses – Moxon, Carter and Booth in more detail. New members always welcome!

Science News



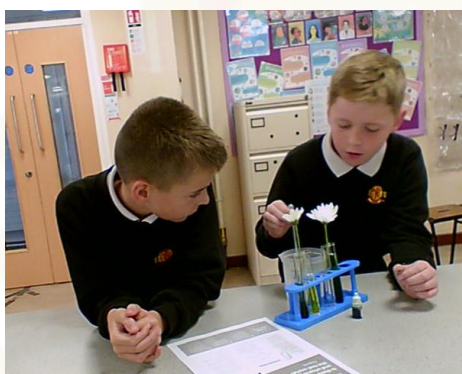
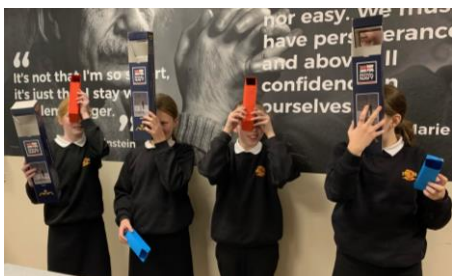
Science club last year had the exciting opportunity to send some experiments to space as part of the Thales Future Martians, MARSBalloon Project. One of the experiments we sent were a selection of plant seeds, including sunflower, pea and runner bean. The experiments reached temperatures of -55°C and a maximum altitude of 33,021 m. Science club then took home some of the seeds over the summer, growing them into plants.



Poppy S (7B) grew her seeds and has analysed what she found out, considering carefully what could have been caused by natural variation and what could have been space! Poppy has written a fantastic write up with her findings and we are proud of the effort she has put in to this and the enthusiasm she has shown. Well done Poppy! When comparing Poppy's results with the other observations, it is starting to appear there may be something to this space idea, with everyone finding that their seeds that had been to space growing faster and taller!



So far this year, science club have explored a variety of different activities from a heart dissection on World Heart Day, periscopes to help us see round corners and even started exploring the wonderful world of witchcraft and wizardry with sugar snakes and coloured plants.

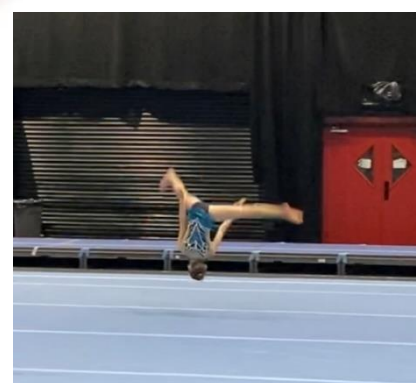


Special Mentions



Well done to Rosie N, 6B.
Rosie is an acro gymnast at Wakefield gymnastics club and trains 5 times a week.
She recently competed at the Yorkshire Championships with a new partnership and at a remarkably high grade.
The girls came fourth just missing the podium by 0.1 .

Rosie is fundraising for her first international competition in Las Vegas in April.



ATL Scores

We are delighted to see so many students making excellent progress at KMS and achieving their ATL points. The students who have made the top 25% in their year group, will be rewarded in the Christmas House Rewards Assembly. Congratulations to the following students on making the top 25%:

Year 6	Year 7	Year 8
Isla M	Amelia B	Tyler B
Annie H	Sofia DL	Orson B
Elijah M	Toni H	Jessica B
Ruby R	Thomas W	Bella B
Amber B	Scott B	Lucy F
Carley B	Daisy S	Edith H
Maria W	Scarlett S	Alice M
Ben W	Scott B	Sebastian S
Max A	Indiana G	Lily S
Connie C	Lucy D	Olivia WB
Dylan A	Maisie H	Ella W
Isabella H	Annabella M	Lexie W
Jessica J	Frederick P	Spike B
Emilia M	Arabella S	Susie C
Imogen M	Kitty E	Heather D
William T	William G	Poppy H
Melody Y	Alfie C	Rose J
Heidi A	Eliza O	Mollie M
Alice C	Poppy S	Daisy V
Molly G	Emily H	Nieve B
Bella BM	Isabelle M	Georgina H
Henry K	Greta N	Jessica B
Grace S	Ava N	Saffie B
Lyla BH	Noah C	Jack K
Imogen B	Reuben D	Isaac D
Dylan D	Chloe P	Kitty D
George F	Ellie B	Megan M
Benson H	Charles E	Leo Y
Luca H	Isabelle M	Gray B
Amelia H	Annie T	Maya C
Charlie K	Lila TG	Maya G
Zara K	Flora B	Sylvie H
Noah M	Jessica C	Megan H

Callum R	Amelia D	Alfie K
Isabelle SL	Sam F	Annabelle M
Tabitha S	Katie M	Scarlett R
Layla A	Charlie R	Eva-Rose A
Joe H	Evan W	Annie M
Sophia VG	Eva C	Bobby M
Beatrice W	Daya D	Millie RS
	Aurelia M	Inaaya S
	Stanley S	

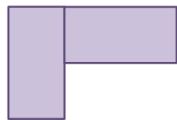
Brain teaser

- 1 A square has a perimeter of 48 cm.



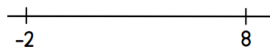
The square is cut in half.

The two halves are put together to make this shape.



What is the perimeter of the new shape?

- 2 What number is halfway between -2 and 8?



- 3 Bilal receives some birthday money.

He spends a quarter of it repairing his bike.

He has £24 left.

How much money did he receive for his birthday?



Children in Need



Many thanks to everyone who donated and brought in cakes for the bake sale. There were some wonderful looking cakes and biscuits. In total we raised £352.35. Thank you to everyone for your support to a worthy cause.

Attendance

For all attendance issues including absences, medical appointments, and reasons for being late or out of school, could you please email Kirkburtonattendance@themast.co.uk. This will go straight through to our Attendance Officer who can ensure all records are up to date.

Useful Contacts

Thriving Kirklees

Healthcare advice, Emotional Wellbeing and Mental Health Support, Healthcare Signposting

www.thrivingkirklees.org.uk

0300 304 5555

Kirklees Children's Services

Safeguarding Services and Duty and Advice

www.kirkleessafeguardingchildren.co.uk

01484 456848

Childline

<http://www.childline.org.uk>

0800 1111

Northorpe Hall – Kirklees

Children's mental and emotional health service

<http://www.northorpehall.co.uk>

01924 492183

Thriving Kirklees – Chathealth

Text message services for young people – direct link to School Nurse

07520618866

NSPCC

Support for Parents and Children

<https://www.nspcc.org.uk/>

Parents/carers – 0808 800 5000

Children – Via Childline 0800 11 11