



@KMSchool

Kirkburton Middle School



## Kirkburton Middle School - Parent Bulletin

29 January – 11 February 2021

Issue: 8



### In this issue

Message from Mr Taylor

Safeguarding

Subject of the fortnight

English

ClassCharts

PE

Careers

Resource Bus

IT Support

Support Services

### Word from the Head

Welcome to our weekly parent bulletin, I hope you and your family are well. It has been another very busy couple of weeks at KMS and I hope what follows gives you a flavour of this.

We continue to be extremely impressed with the commitment our wonderful pupils are showing to their learning under such difficult circumstances. Likewise, I am also highly impressed with how our fantastic staff group has risen to the challenge of remote teaching. This has been a very steep learning curve for some but the creativity and commitment shown by both staff and pupils on a daily basis is a pleasure to see. As always, if you have any issues connecting to live lessons, please let us know.

We are aware, as I'm sure you are, that pupils are spending a significant amount of time in front of screens each day. At this moment in time we feel the benefits of attending live lessons far outweigh the negatives in relation to too much screen time. We will however monitor this closely. We are drawing up plans for a screen free day at some point next half-term to vary pupils'

experience of learning. We would be interested to hear your views on this.

Our onsite Covid testing centre is now up and running with fortnightly lateral flow tests on offer to staff. We have also written to the parents of all Year 7 and 8 pupils who are attending the school site offering their child two Covid tests in line with national guidance. The aim will be to roll this out to other pupils when they return to school.

We are looking forward to our first parents evenings of the school year which are taking place very soon. It will be lovely to see people once again even if it is in the virtual world. Full details have been sent to Year 7 parents and we hope the technology will hold up on the night. A reminder that there will be an opportunity for you to test your connection, should you wish, between 4pm and 5pm on Thursday 4<sup>th</sup> February. A link to this event will be emailed out at the start of next week.

We've added a new feature to our bulletin – 'subject of the fortnight'. A number of people commented in the recent parent survey that they would like to know more about what their child is studying in school. We will be showcasing a different subject each fortnight starting with maths. In the meantime you can find further information about what your child will learn, including a full curriculum map for each year, on the [subjects section of the school website](#).

Once again, can I thank you for all your ongoing support during these difficult times, particularly in keeping your children at home wherever possible. By keeping children at home, we can facilitate the full return to school for all pupils as quickly as possible. It also allows us to make the school as safe as possible for those who have no alternative but to attend – both pupils and staff.

**Enjoying, Achieving, Succeeding Together.**

Finally, in the spirit of sportsmanship, I'd like to wish Huddersfield Town fans all the best for this weekend's big match. I seem to remember I thoroughly enjoyed my visit to the John Smith's last January and hope to return some time very soon. 🍀

Mr Taylor

### Safeguarding

The period of forced partial school closures is an unsettling time for many families and as a school, we aim to continue to support our pupils in every way possible. In addition to learning resources being provided, the Safeguarding team in school will also be monitoring the welfare of our most vulnerable children.

Should any of our families have concerns around the safety or wellbeing of children from our school community you can contact members of the Safeguarding team directly for advice or support on the following email addresses:

Mrs Senior – Safeguarding Lead  
[g.senior@kirkburtonmiddleschool.co.uk](mailto:g.senior@kirkburtonmiddleschool.co.uk)

Mr MacIntyre – Deputy Safeguarding Lead  
[a.macintyre@kirkburtonmiddleschool.co.uk](mailto:a.macintyre@kirkburtonmiddleschool.co.uk)

### English – Year 6

Please can parents/carers encourage their child to use SpellShed every week. If there are any problems accessing the website/tasks, please contact your child's English teacher.

Many thanks for your support - The English Department

### ClassCharts

Next week we are hoping to follow our usual positive behaviour routines and award pupils their usual 'Responsible Learner' point for lessons. We have completed another devices survey with pupils and we believe that all pupils can now access all live lessons available. If your child has still not filled in this survey, please encourage them to do so by clicking [here](#). If you

have any concerns about this, please contact Mrs Kerr: [s.kerr@kirkburtonmiddleschool.co.uk](mailto:s.kerr@kirkburtonmiddleschool.co.uk)

We will continue to award points on ClassCharts for completed assignments and we will let you know if your child has not completed an assignment via Class Charts also by giving negative points. We would appreciate your support in checking your child's Class Charts account on a regular basis. Many thanks.

### PE

#### KMS PE KS3 Leadership Opportunity

All year 7 and 8 students have the option to complete a virtual sports leadership qualification on Teams. This has been launched this week and is on their PE team assignments. KMS has a great tradition of providing leadership opportunities and this will allow those who wish to complete it, a chance to learn what it means to be a sports leader and to practice some leadership skills with family at home. Students must complete tasks in the leadership booklet, either by editing it on their device or by printing it out and writing in it. Once complete, the booklet should be sent to or handed in to their PE teacher who will reward them with a Bronze, Silver or Gold Sports Leadership Certificate, depending on the quality of work produced. There are many students in year 7 and 8 who will make fantastic sports leaders and we hope they will take this opportunity to prepare themselves for any leadership challenges in the future.



#### PE activities for Year 6, 7 and 8

All students should familiarise themselves with their year group PE team on Microsoft Teams. We update the resources in Files, Class materials, every week and always provide activities to help students stay active at home. They can be completed during normal PE times or at any time that is convenient. Remember, they should aim to be active for 60 minutes every day!

## Youth Sports Trust 60 second challenges

Below is a link to numerous physical activity challenges of varying difficulty, created by Youth Sports Trust. They have been designed to be used at home or in classrooms and require minimal to no equipment. Please complete as many of these as you can throughout the week, modifying if needed and record your results on paper. If time allows, why not try them again and attempt to beat your previous scores?

<https://www.youthsporttrust.org/60-second-physical-activity-challenges>

Mrs Joyce, Mr Martin and Mr Killock

## Careers – Year 7 & 8



Unfortunately, we are not in school but it is still very important to learn about the different routes our children can make when they are 16 years old. One route is through Apprenticeships.

Please can you encourage your children to watch the two short videos and attempt the quiz below.

Thank you for your support in your child's Career education.

<https://amazingapprenticeships.com/resource/naw2021-which-apprenticeship-am-i-quiz/>

<https://amazingapprenticeships.com/resource/naw2021-a-z-film-of-apprentices/>

<https://vimeo.com/358762043>

## IT Support

[Please report any technical issues here in relation to accessing live lessons](#). This will direct your query to the most appropriate person and enable us to deal with issues in a more efficient manner.

## Resource Bus

Next week, during lunchbreak, KMS will be visiting the local community with English and Maths exercise books as well as some stationery and blank exercise books. We look forward to seeing you, and if you cannot see your location, then please contact the school office should you require any resources. Many thanks. Mr MacIntyre

**Monday:** Dalton (Tesco Express 12:15pm) and Waterloo (Total Fitness carpark 12:50pm)

**Tuesday:** Emley (by the Nisa Store 12:05pm)

Skelmanthorpe (by the Grove pub 12:30pm)

**Wednesday:** KMS turning circle 12:15-12:45pm

**Thursday:** Farnley Tyas (Golden Cock carpark 12:10pm)

Stocks Moor (Norton Terrace 12:40pm) Thurstonland (by the First school/rec 12:55pm)

**Friday:** Shelley (near the Nisa Store 12:05pm) and then to Shepley (12:45pm the carpark of the Black Bull)



## In school rapid testing

We have now begun the successful pilot of testing staff in school and now that we are comfortable with our level of provision we have extended the provision to year 7 and 8 pupils who are working on site. Please click the link if you would like to express your interest and you haven't already [Covid testing expression of interest form](#). Please remember that all critical workers who live or work in Kirklees can access rapid testing via the mass community testing programme. [Please see here for further details](#).

## Subject of the fortnight – Maths



Over the past couple of weeks and in to the next few weeks pupils have been studying and will be studying the following topics:

	<i>Last few weeks</i>	<i>Next few weeks</i>
<b>Year 6</b>	angles, angle calculations, 2D and 3D shapes and decimals.	percentages, ratio and measurement.
<b>Year 7</b>	plotting linear equations, powers and roots and rounding.	angles in shapes, sequences, order of operations and problem solving.
<b>Year 8</b>	averages, mean from a table and scatter graphs.	sequences, equations of a line, multiples, factors and primes, transformations and revision for the Shelley Exam.

### How you can help us help your child:

- **Please avoid saying you are or were bad at Maths.** Stay positive, say you struggled, but kept going.
- **Don't worry about getting the answers wrong** – by showing your child that mistakes are the first step in plugging knowledge gaps and growing, you're teaching them to be more resilient in the face of a challenge.
- **Have your child teach you.** When faced with a question that you can't answer, explain that you're stuck too, and challenge them to figure it out just well enough that they can try to explain it to you. Even if they help you only a little bit, they may spark insights that allow you to finish where they left off.
- **Make Maths a 'normal' part of life.** Talk about time, amounts, directions, angles, cooking weights and measures, DIY, money and change.

- **Never neglect the basics!** A common mistake is to focus on the plethora of new concepts, leaving basic skills like mental arithmetic to stagnate. Strong foundations in basic maths make the harder stuff more accessible; if you're getting nowhere with the tough questions, go back to the basics. A good grasp of place value, times tables and mental arithmetic will help when you revisit those difficult questions later on.
- **Take it slow.** The same tools you might use to solve *any* problem apply here. Take breaks. Try a different way. Ask someone else. Everyone's pace for learning maths is slightly different.
- **ENJOY IT!**

### Useful Websites and Apps:

- [www.mymaths.co.uk](http://www.mymaths.co.uk) we use this as a teaching tool and we set several homework and assignment tasks from here. Every pupil in school has their own log in and password.
- [www.ttrockstars.com](http://www.ttrockstars.com) we have used this to engage pupils with times tables. It is not only about knowing your times tables forwards and backwards but this helps the pupils to improve their recall and speed of mental calculations. A few sessions of 10 minutes a week is ideal to keep their mental skills sharp.
- <https://www.kirkburtonmiddleschool.co.uk/subjects/mathematics> the Maths Department section of the school website.

### Apps to try:

If you have a mobile phone or access to one, we have managed to find some Maths apps that are a REAL challenge for you. They can be found for Apple or Android phones alike and are made by MEI, Mathematics in Education and Industry. They are **FREE** to download and use.

The three apps are: Sumaze! Adventure, Sumaze! & Sumaze! 2

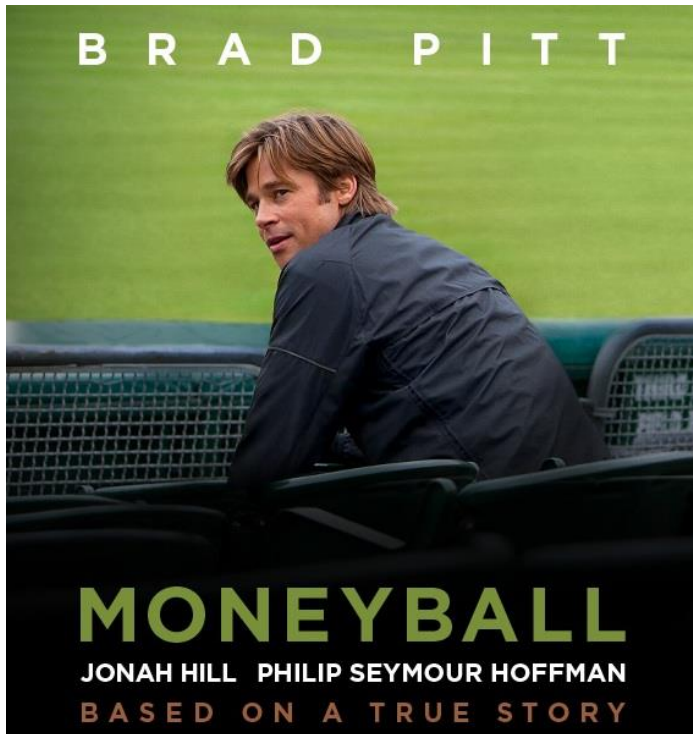
We think Sumaze! 2 is a little easier than Sumaze!

Good luck. Give them a good go, get any help you can and if you get stuck, leave it for a while and come back to it. (Mr Tyson had to!!)



**Try a Maths film that the family can watch together:**

- Hidden Figures – the space race and Maths.
- Donald in Mathmagic Land – a classic cartoon.
- Queen of Katwe – a Disney film about Maths and Chess.
- Moneyball – how Maths helped a baseball team.



**Other games and activities to try which are not on screen but are useful for Maths:**

Shut the Box, Monopoly, Draughts, Chess, Battleships, Uno, Dominoes, Guess Who, Connect Four and any Card Games.

**Riddles for you to try .....**

There are several chickens and rabbits in a cage (with no other types of animal). There are 72 heads and 200 feet inside the cage. How many chickens are there and how many rabbits?

Sally is 54 years old and her mother is 80, how many years ago was Sally's mother three times her age?

You are in a roomful of 10 people. Everyone is asked to shake hands with everyone. How many handshakes will there be?

**Maths Department contact details:**

Mr. D. Smith, Miss E. Charlesworth, Mr. C. Tyson, Mrs T. Waterhouse, Mr. D. Martin, Mrs C. Davies, Mrs J. Stratford & Mr. A. Turner.

Email address eg.

[d.smith@kirkburtonmiddleschool.co.uk](mailto:d.smith@kirkburtonmiddleschool.co.uk)

Maths teacher initial.surname followed by  
@kirkburtonmiddleschool.co.uk.

**And finally .....** Maths teachers do have a sense of humour .....

Maths Jokes ..... Ask your son or daughter to explain them!

**Surgeon:** Nurse! I have so many patients! Who do I work on first?

**Nurse:** Simple. Use the order of operations.

**Why did the student get upset when his teacher called him average?**

It was a mean thing to say!

**What did one Maths book say to the other?**

Don't bother me I've got my own problems.

**I saw my Maths teacher with a piece of graph paper yesterday!**

I think she must be plotting something!



## **Kirklees Support Services**

### **Thriving Kirklees**

Health Care advice, Emotional Wellbeing and  
Mental Health Support, Healthcare  
Signposting

[www.thrivingkirklees.org.uk](http://www.thrivingkirklees.org.uk)

0300 304 5555

### **Northorpe Hall – Kirklees**

Children's mental and emotional health  
service

[www.northorpehall.co.uk](http://www.northorpehall.co.uk)

01924 492183

### **Kirklees Children's services**

Safeguarding Services

[www.kirkleessafeguardingchildren.co.uk](http://www.kirkleessafeguardingchildren.co.uk)

01484 456848

### **Services for young people**

### **Thriving Kirklees**

Chathealth – Text message services for young  
people – direct link to School Nurse

07520618866

### **Childline**

[www.childline.org.uk](http://www.childline.org.uk)

0800 1111

### **NSPCC**

Support for Parents and Children

[www.nspcc.org.uk](http://www.nspcc.org.uk)

Parents/carers – 0808 800 5000

Children – Via Childline 0800 1111



**Thriving Kirklees**

Text your  
Thriving  
Kirklees  
nurse

07520  
618866

If you're aged 11-19 (Year 7  
and above) text your Thriving  
Kirklees nurse **07520 618866**

**ChatHealth**

[www.thrivingkirklees.org.uk](http://www.thrivingkirklees.org.uk)



Burton out of School Club  
The Village Hall, Highburton

**We are looking for a Manager for our friendly out of school club for children aged 4-10**

25 hours per week.

Club opening times 7.30am - 9am and 3pm - 6pm. Some home working will be required.

Experience of working with children and managing a small team desirable.

A DBS from the Disclosure and Barring Services is essential before any appointment is confirmed.

For a full Job Description plus Person Specification and further details please contact;  
Angela Green

[burtonoutofschoolclub@gmail.com](mailto:burtonoutofschoolclub@gmail.com)

**Closing date for applications 31/01/2021**

*Burton out of School Club is an equal opportunities employer*

Burton out of School Club is committed to safeguarding children