

Kirkburton Middle School

‘Enjoying, Achieving, Succeeding Together’



Academic Year 2021-2022



Year 5 Transition 2021
Introducing Kirkburton Middle School



Term Dates 2021-2022

Term Dates 2021-2022

Autumn Term

Monday 6th September – Friday 22nd October 2021

Monday 1st November – Friday 17th December 2021

Spring Term

Tuesday 4th January – Friday 18th February 2022

Monday 28th February – Friday 8th April 2022

Summer Term

Monday 25th April – Friday 27th May 2022

Monday 6th June – Friday 22nd July 2022

INSET Days

Monday 6th September

Friday 26th November

Tuesday 4th January

Monday 25th July

Tuesday 26th July

Important Dates

Transition day

Wednesday 21st July 2021

First Day at KMS for pupils

Tuesday 7th September 2021

Welcome Message



Welcome to our new pupils

It is with great pleasure that I welcome our new pupils and their families to Kirkburton Middle School. Starting a new school is a big moment in anybody's life. We hope that you are looking forward to coming to your new school but we know that you're probably feeling a little nervous as well. From experience, we know that this feeling goes away very quickly once you start to make new friends and study exciting new subjects for the first time. I know that all the staff, pupils and myself are very much looking forward to getting to know you.

There is lots to remember when you start a new school and you are bound to forget some things at first. Please do not worry about this as there are many people who are ready to help you to settle in to your new school. The single most important thing you must remember is to always try your hardest every single day.



As your Headteacher, if you do that, I will never question or worry about your grades or other achievements because, by giving your best it will mean that all those things will take care of themselves. I also ask that you make sure you have good attendance (always aim for 100%) and that you get involved in as many extra-curricular activities as you can. You are at the very start of a great journey. I know that exciting and enjoyable times await you in September so enjoy the summer holidays, and make sure you are well rested ready for the first day back!

Welcome to our new parents

Not only is moving to Kirkburton Middle School a big moment for your child, I know that it is the same for you. One of the things that parents often say to me is that the transition can begin a decline in their involvement in their child's education. I hope that you will not feel this way with Kirkburton Middle because we truly believe that not only is this your child's school but it is yours too.

School Day



Time	Event
08.55 – 09.05	Registration
09.05 – 10.05	Period 1
10.05 – 11.00	Period 2
11.00 – 11.20	Morning Break
11.20 – 12.15	Period 3
12.15 – 13.15	Lunch Break
13.15 – 13.40	Registration/ Tutor Time / Reading
13:40 – 14:35	Period 4
14.35 – 15.30	Period 5
15:30 – 15:35	Tutor Dismissal

Assemblies will take place once a week during tutor time.



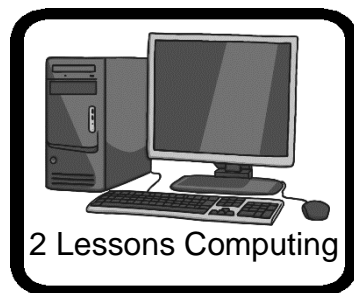
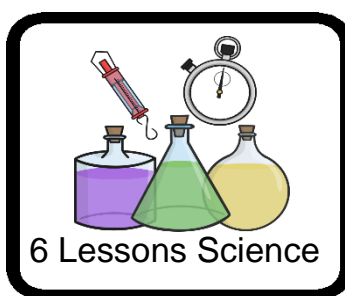
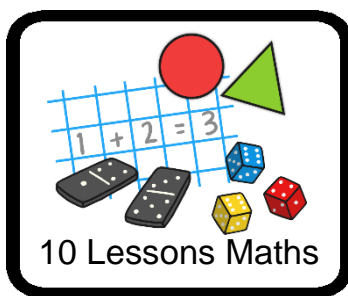
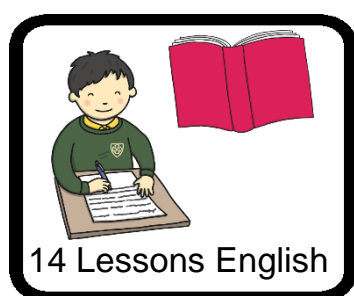
Teaching & Learning

What happens in the CLASSROOM is of vital importance. Some of the subjects and lessons pupils will study will feel very similar to first school but some will be very new. Hopefully, they will find much that is exciting, interesting and inspiring. We ask that pupils never be afraid to ask when unsure about something; it is our teachers' job to guide them. It is important that pupils also work hard at home whenever they are set homework. These tasks will often require pupils to learn key concepts and knowledge from their lessons that week or fortnight. For pupils to succeed, they must be able to remember everything that they have learned throughout the year. Regularly revisiting or 'retrieving' prior knowledge is a skill we will practice a lot to help them remember things. For more information about the exciting topics pupils will study each year, please see the 'subjects' section of the school website.

We firmly believe that learning doesn't just happen in the classroom during 'traditional' lessons. As such we have worked hard to develop a curriculum which contains a wealth of opportunities for enrichment activities. From geography field trips to mock interviews in careers, our curriculum provides pupils with the opportunity to experience a broad range of learning experiences which will support them as they move up to high school and beyond.

What subjects will I study?

Our timetable is a two week timetable made up of 25 lessons per week. The information below shows how many lessons of each subject pupils in Year 6 will study every two weeks.



School uniform



We are proud of our school and expect all pupils to wear the KMS uniform with pride. We believe our uniform:

- ☒ Creates a sense of school community, cohesion and identity
- ☒ Supports positive behaviour and good discipline
- ☒ Ensures pupils from all cultures and backgrounds feel welcome
- ☒ Protects children from social pressures to dress in a particular way

Our uniform comprises of:

Jumpers – Plain black crew neck sweatshirt (with school LOGO).

Polo shirts – White polo shirt (with school LOGO).

Trousers – Plain, black tailored trousers. Jeans-styled trousers, skinny trousers, jeans, cords, leggings or tracksuit bottoms are not allowed: nor are combat-style trousers with large outside pockets. Alternatively, pupils may wear black tailored school shorts (not casual shorts or sportswear).

Skirts – Plain black skirt from our named suppliers (with school LOGO).

Socks/tights – Plain black or grey ankle or knee-length socks. Plain black tights.

Jewellery and fashion accessories – One small plain stud earring in each ear is allowed. Ear tapers, tunnels, plugs and hoops are forbidden. No adornments whatsoever (e.g. rings, necklaces or bracelets). Nose studs or other body piercings will not be allowed. Pupils wearing unacceptable items will be asked to remove them. Nail extensions/nail varnish should not be worn in school. Pupils wearing nail varnish or make-up will be asked to remove it.

Outer garments – The wearing of outer garments to and from school is encouraged. They should be appropriate to the season. Coats should not be denim or have obtrusive logos on them. Heads should not be covered indoors (except for religious observance).

Hair and make-up – Extreme or unnaturally coloured hairstyles are not allowed. What constitutes 'extreme' is at the discretion of senior staff. Should hairbands be worn, these must be discreet. Pupils may not wear make-up in school. This includes eyeliner, mascara, foundation, lip glosses or lipsticks.

School uniform



Footwear – Shoes must be plain black leather or leather effect and suitable for school. Plain black laces only. Pumps, canvas shoes, trainer style shoes are not allowed even if they are black. Please see the school website for photographs of suitable shoes.

If in doubt, please ask school for advice before purchasing new shoes.

School Bags – Children do need a school bag to transport books and equipment but it should be of a reasonable size (suggested length 50cm). Small handbags or 'man bags' are not appropriate.

If pupils arrive at school without the correct school uniform they may be allocated the correct items to wear for the day, including footwear.

PE, Games Clothing and Practical Work Checklist:

- ☒ Indoor PE – a school logo T-shirt in your house colour, plain black shorts / skirt/skort and trainers.
- ☒ Outdoor PE – as indoors with a change of socks.
- ☒ OPTIONAL Tracksuit bottoms, if worn, should be plain black. All pupils may wear a plain black hoody or plain black sweatshirt.
- ☒ Pupils are encouraged to wear a gum shield when playing hockey (available from sports retailers or your dentist). Pupils are also encouraged to wear shin pads for certain sports.
- ☒ Please ensure all items are clearly marked with your child's name.

Pupils with hair which is of a length that may constitute a health and safety risk in practical subjects such as DT, Science and PE need a safe, sensible means of restraint.

Pupils will also need an apron for their DT lessons

School Uniform Suppliers:

Term Time Wear: 5 St John's Road, Huddersfield (Tel: 01484 453534)

Natasha Schoolwear: 2 Buxton Way, Huddersfield (Tel: 01484 431260)

Bridge Schoolwear: 4-6 Scar Lane, Milnsbridge, Huddersfield (Tel: 01484 655655)

Equipment & valuables

What equipment will I need for school?

- A pencil case
- A Black & Green ink pen (ballpoint, cartridge, fibre tip or roller ball)
- A glue stick
- Pencil, pencil sharpener and rubber
- Pencil crayons
- A 30cm ruler
- A pair of compasses
- A calculator
- A small pair of scissors
- You should **NOT** bring Tipp-Ex or other correction fluid to school
- A schoolbag - a back pack is an ideal size
- A water bottle (labelled with your name) to keep hydrated
- A purse or wallet in which to keep your money



Personal property & valuables.

- Pupils are strongly advised not to bring valuables into school.
- Mobile phones, iPods, MP3 players or other electronic devices should not be used in school and are not covered by the school insurance.
- Teachers have a right to confiscate these if seen.
- If pupils do have to bring valuables, other than mobile phones, into school, please inform a member of staff.
- Pupils must follow security procedures during PE lessons.
- Lost property should be handed to the Office. See the Office for lost items.
- Pupils should put their names on all their belongings.
- All phones **MUST** be switched off at the school gates and placed in bags.
- Phones must be handed in to your form tutor at the beginning of the day to be placed in a secure place. Phones will be returned at the end of the school day.
- Pupils who do not hand their phone in will have them confiscated for a set period of time in line with the school behaviour policy.





Travelling to & from School

- Pupils who are walking to and from school will be expected to stay on the pavements.
- If cycling, then cycle paths should be used if possible and if not then pupils will be expected to cycle sensibly on the roads. Cycle helmets must be worn at all times.
- Pupils arriving by school bus will be dropped off in the school turning circle and at the end of the day pupils catching a school bus will be supervised to line up ready on the 'all-weather' pitch.
- Pupils will be given a specific seat on the bus and will be expected to remain there on their journey.
- Misbehaviour on the school buses endangers pupils, the driver and other people. Such behaviour brings the school into disrepute. **IT WILL NOT BE TOLERATED.**
- Bus monitors, the driver and the bus company will inform the school of any misbehaviour.
- If reported, pupils will be temporarily or permanently excluded from the school buses. Parents/carers will be informed and will be responsible for arranging alternative transport.

What happens if the bus is missed?

If a pupil misses the bus we do not expect them to start walking to school, so before starting at K.M.S it is important to agree with your child what they should do in this eventuality. Usually pupils should go back home and report to yourself what has happened or go to a neighbour who has agreed to give them a lift to school. We also suggest all pupils have the school phone number in their mobile phone in case of an emergency.

Buses leave school promptly at 3.45pm. If your child happens to miss their bus, you will be contacted to make arrangements for them to get home.



Service Number	Operator	Destination	Departure Time	
KM1	Yorkshire Tiger Bus Company Tel: 01484 537277	Flockton Road Shepley The Knowle Sovereign Inn Shepley Marsh Lane Shepley Black Bull	08.10 08.17 08.21 08.25 08.30	Leaves KMS at 15.45pm
KM2	Globe Holidays Tel: 01226 299900	Shepley Black Bull	08.30	Leaves KMS at 15.45pm
K82	First School Service (yellow bus) Tel: 0345 646 0707	Westgate at Sharp Lane Farnley Tyas Stockmoor Railway Station	08.15 08.25 08.32	Leaves KMS at 4.00 pm
K89	First School Service (yellow bus) Tel: 0345 646 0707	Ivy Green Public House Waterloo Lepton High Green	08.25 08.30 08.35	16.10 16.00 15.52
411	CT Plus Tel: 01924 377084	Emley Cross, Emley Oddfellows, Shelley	08.22 08.35	Leaves KMS at 15.45pm
Service Bus 233	Yorkshire Tiger Bus Company Tel: 01484 537277	Huddersfield Bus Station Waterloo Bus Depot Highburton Co-op George Inn, Kirkburton	08.15 08.32 08.40 08.47	16.23 16.06 15.59 15.52
Service Bus 233	Yorkshire Tiger Bus Company Tel: 01484 537277	Denby Dale Railway Station Gilthwaites Clayton West, Springfield Ave Grove Inn, Skelmanthorpe George, Kirkburton	07.49 07.57 08.06 08.23 08.33	16.50 16.46 16.36 16.28 16.20

Parents' Evenings. During the school year, Parents' Evenings are held to provide the opportunity for parents to meet and discuss with staff their child's progress. In addition to these formal Parents' Evenings, you should feel free to contact the school at any time to discuss any matters concerning your child's progress. It is best to telephone or email the school first so that an appointment may be made with the relevant member of staff at a time that suits.

Pupil Planner. At the start of the school year each child is given a planner which includes useful information, term dates and staff training dates. This is a key means of communication between school and home. Pupils use this to record homework each week. It is also a way of contacting home for praise or concern, having a weekly space for staff and parent comments. It should be signed each week by a parent and checked and signed by the form teacher.

Website. Our website provides access to school and community information. Visit us at kirkburtonmiddleschool.co.uk to find out more.

Parent Bulletin. This contains notices about upcoming school and community events. The bulletin is emailed directly to parents fortnightly during term time and is also available on our website. If you do not receive the Parent Bulletin please contact us at: office@kirkburtonmiddleschool.co.uk

Edulink One App. Edulink One is the school's parental engagement app. You can use the app to view your child's timetable, attendance, behaviour record, school reports, book parents evening appointments and much more. We also use the app to communicate with parents either via emails or direct messaging.



Newsletter. A digital newsletter is produced each term and is made available to parents, staff and governors via email and the school website. The content is aimed at parents, to keep them informed of events and activities which have taken place in school.

Social Media. KMS have social media accounts, the details of which are below. These are a really good way to keep connected to the work of the school.



twitter.com/KMSchool



youtube.com/KirkburtonMiddleSchool



facebook.com/groups/KirkburtonMiddleSchool



Getting the most from school



We are very proud of the wide variety of extra-curricular activities on offer at our school. Whatever you are interested in, we encourage all pupils to get involved in as many different additional activities as possible. Whether you enjoy sport, the arts, technology or any of the other exciting things we have to offer – make sure you get involved. Doing this will help you to learn in many different ways as well as introducing you to new friends. For many people, it is by joining a school club that they develop interests and hobbies which then stay with them for life.

We have a very strong music department for those who already play an instrument. If you don't already play an instrument, we have lots of opportunities for you to start. Make KMS the start of your musical adventure.



A selection of clubs and activities available at school

- | | | | | |
|------------|-------------|---------------|----------------|-----------------|
| • Art | • Craft | • Netball | • Science club | • Gardening |
| • Dance | • Chess | • Pop choir | • Hockey | • African drums |
| • Cricket | • Warhammer | • Gymnastics | • Scrabble | • Book club |
| • Football | • Languages | • Rock guitar | • Basketball | • Homework |

Don't see something you like? We are always open to suggestions for new clubs. Unfortunately our budget probably won't stretch to a skydiving club however.



Past KMS School trips



Year 6 Bushcraft



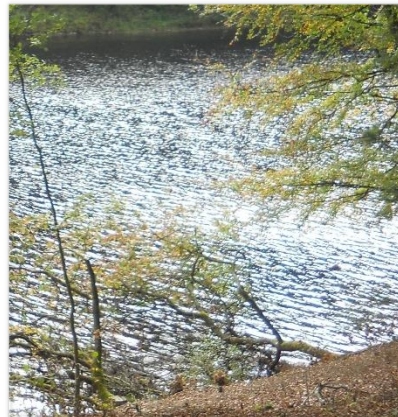
Year 6 Pantomime



Year 7 PGL Caythorpe



Year 7 Ski Trip



Year 7 Clapham Field Trip



Year 7 France Trip



Year 8 Theme Park Trip



Year 8 Ardeche Trip



Year 8 Hadrian's Wall

Contact & support



Parents are encouraged to seek advice and support from the school should they have any concerns relating to their child. Parents can contact school in writing, via email, in person (by appointment) or by telephone. Staff will endeavor to respond to communications as soon as they can. Our contact with you will be professional and courteous. We respectfully ask that you show the same courtesy in your communications with our staff.

Your first point of contact should usually be with your child's Form Tutor as they will get to know your child on a daily basis. If your query is subject specific, then contact your child's subject teacher in the first instance.

Email Enquiries

- General enquiries should be made via: office@kirkburtonmiddleschool.co.uk
- If you wish to contact a member of staff directly you will need to know their first initial and the correct spelling of their surname. A full staff list can be found on the school website.
Example: s.jones@kirkburtonmiddleschool.co.uk





Punctuality & absence

Please be aware of the following information:

- ✓ Holidays during term time are not permitted. Please see Shelley Pyramid attendance policy.
- ✓ The school day starts at 8:55am.
- ✓ Pupils are expected to attend school on time every day.
- ✓ If pupils are late they should sign in at reception.
- ✓ Three lates in one half term will result in a detention.

All absences must be authorised by parents/carers, so please notify us of **absences daily** on 01484 222737 or email office@kirkburtonmiddleschool.co.uk and report a reason for continued absence.

If a child is absent and we haven't been informed why, school will:

- ✓ Telephone/text parents/carers on the first day of absence if we have not heard from them by 10.00am.
- ✓ Attempt a home visit if there is no response to initial contact. If there is still no response, school will ring 101 to report the absence to the police.
- ✓ Overall attendance will be closely monitored by the Pastoral Team.
- ✓ If your child's attendance falls below our expectations you will be contacted.
- ✓ Invite parents/carers in to school to discuss the situation with our Pastoral Team and/or a member of the Senior Leadership Team if absences persist.
- ✓ Refer the matter to the Local Authority Attendance and Pupil Support Service; if attendance falls below 85%



School dinners & ParentPay



How much do school dinners cost?

School dinners currently cost £2.30 for a set meal. There is also a range of snacks available from the dining hall before school and at break time.



How do I know what time to go for my dinner?

Each year group has a turn at being first into the Dining Hall for dinner, so the lunchtime staff will tell you which sitting you are on and when it's time to go for your dinner.

How do I pay for my dinner?

We use ParentPay as a convenient way for you to pay for your child's school meals, trips, events and other items such as equipment and books. Through ParentPay you will also be able to view the school dinner menus as well as seeing what your child has had for lunch each day.

ParentPay offers freedom to make payments at any time, whenever and wherever you like, safely and securely. You will be given an online account, activated using a unique username and password, which you will be prompted to change so that only you have access to your account. If you have more than one child at KMS, you can merge accounts to create one login for your children. Making a payment is straightforward and the payment history is available to view at a later date.

Making payment by cash for dinner

Pupils can bring in cash to pay for their dinner. The canteen staff can add money onto pupil accounts at the tills. Please note it will be your child's responsibility to look after their own dinner money. **Ideally we ask you use ParentPay if possible.**

For further information, please visit www.parentpay.com or contact the school office.

ParentPay Log-in

Please make a note of your ParentPay details here

Email / Username:

Password:





Contact Details & Social Media

 Kirkburton Middle School | Turnshaws Ave, Kirkburton HD8 0TJ

 01484 222737

 office@kirkburtonmiddleschool.co.uk

 kirkburtonmiddleschool.co.uk/transition

 twitter.com/KMSchool

 youtube.com/KirkburtonMiddleSchool

 facebook.com/groups/KirkburtonMiddleSchool