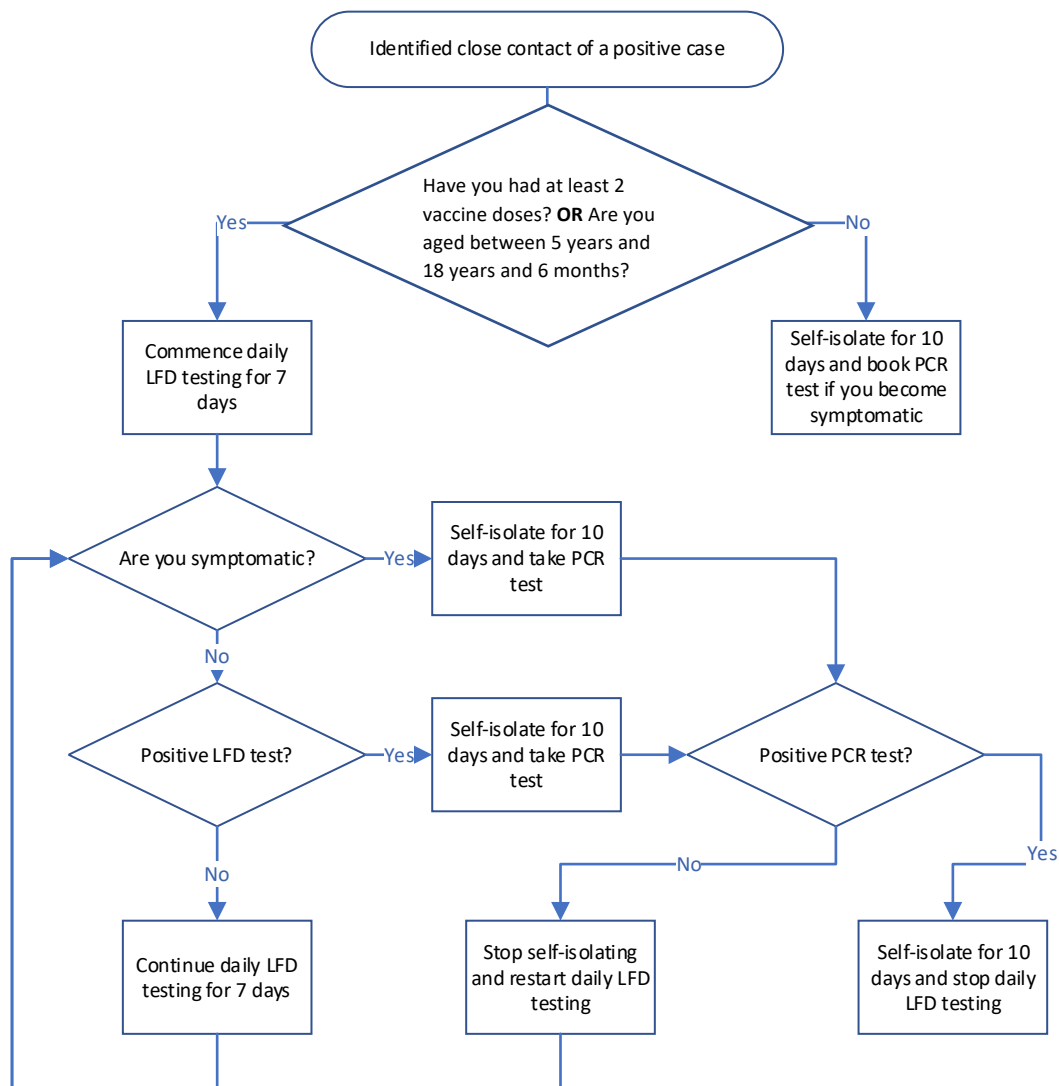


## Self-isolation and testing requirements w.e.f. Tuesday 14<sup>th</sup> December 2021



**Please note:** this diagram should be read alongside the [COVID-19 guidance for schools](#). The DfE has confirmed that national Daily Testing of Contacts of Covid (now called DTCC) is 'strongly advised' and therefore is advisory only. A staff member or pupil does not have to isolate if they are identified as a close contact of a positive case, and if they choose not to participate, they should not be denied access to school.